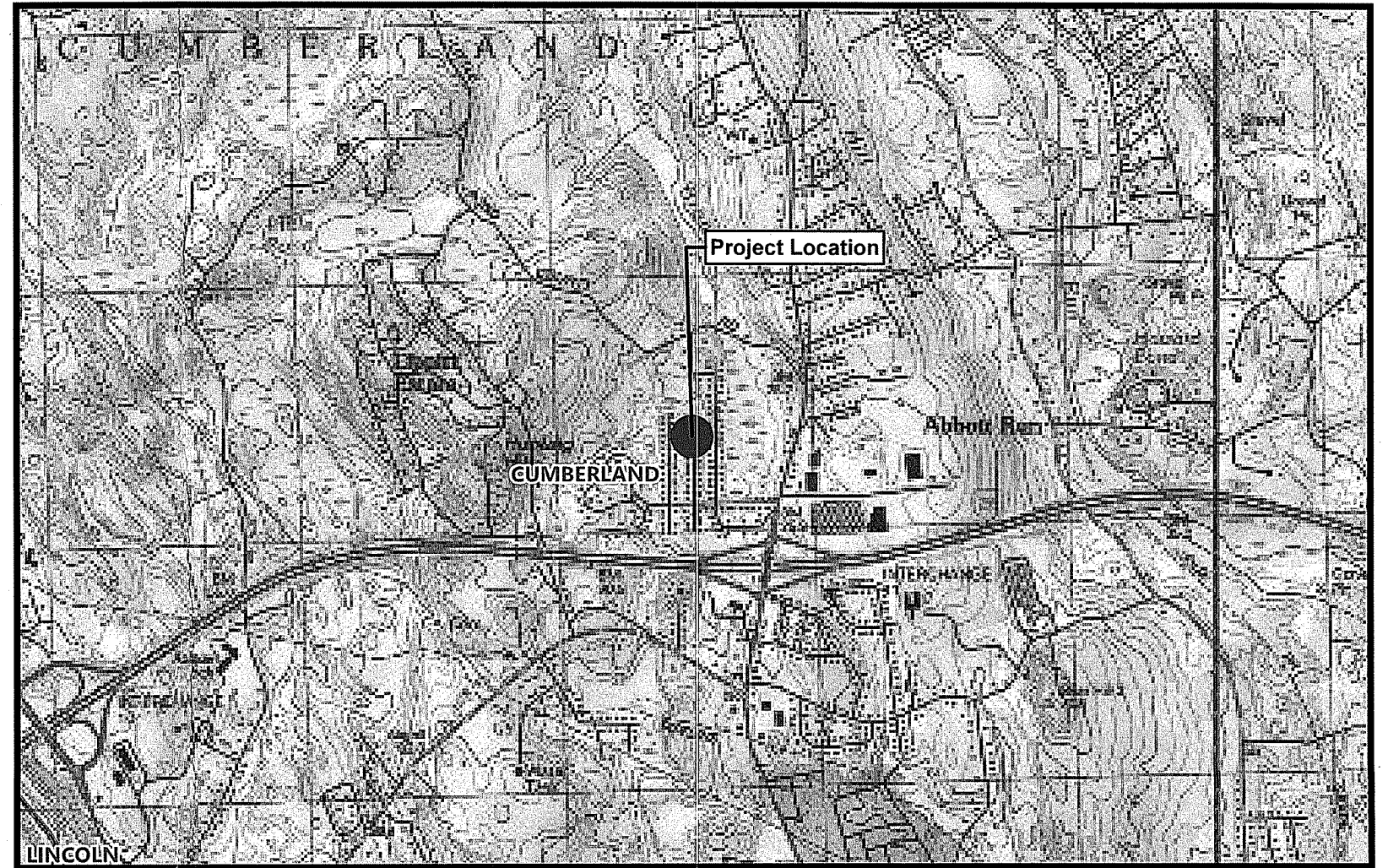


Plan Set

RIDEM Request for Preliminary Determination
Date Issued: 5/28/2021

Proposed Rectifier and Anode Bed Project Abbey Drive

Cumberland, Rhode Island



Site Location Map

Sheet Index

Number	Drawing Title	Latest Issue
1	Notes	5/28/2021
2	Access and BMP Plan	5/28/2021
3	Detail Sheet	5/28/2021

nationalgrid



DEPARTMENT OF ENVIRONMENTAL MANAGEMENT
OFFICE OF WATER RESOURCES
FRESHWATER WETLANDS PROGRAM
APPROVED WITH CONDITIONS
AS SPECIFIED IN THE LETTER OF APPROVAL
DATED OCT - 5 2021 FILE # 21-0163
NO CHANGES ALLOWED WITHOUT PRIOR APPROVAL
APPROVED *Amey L. Freeman*

JUN - 3 2021

Office of Water Resources

**EXISTING CONDITIONS INFORMATION:
REFERENCES:**

1. WETLAND DELINEATION WAS PERFORMED BY VHB, PROVIDENCE OFFICE. WETLAND EDGES WERE LOCATED BY A GLOBAL POSITIONING SYSTEM (GPS) FIELD SURVEY CONDUCTED BY VHB IN MAY 2021. THIS SURVEY CONFORMS TO A CLASS IV STANDARD AS DEFINED IN THE PROCEDURAL AND TECHNICAL STANDARDS FOR PERFORMING LAND SURVEYING IN THE STATE OF RHODE ISLAND AND PROVIDENCE PLANTATIONS.

EROSION AND SEDIMENT CONTROL NOTES:

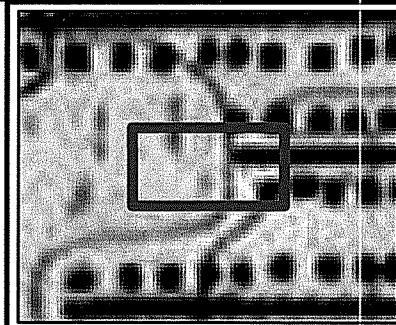
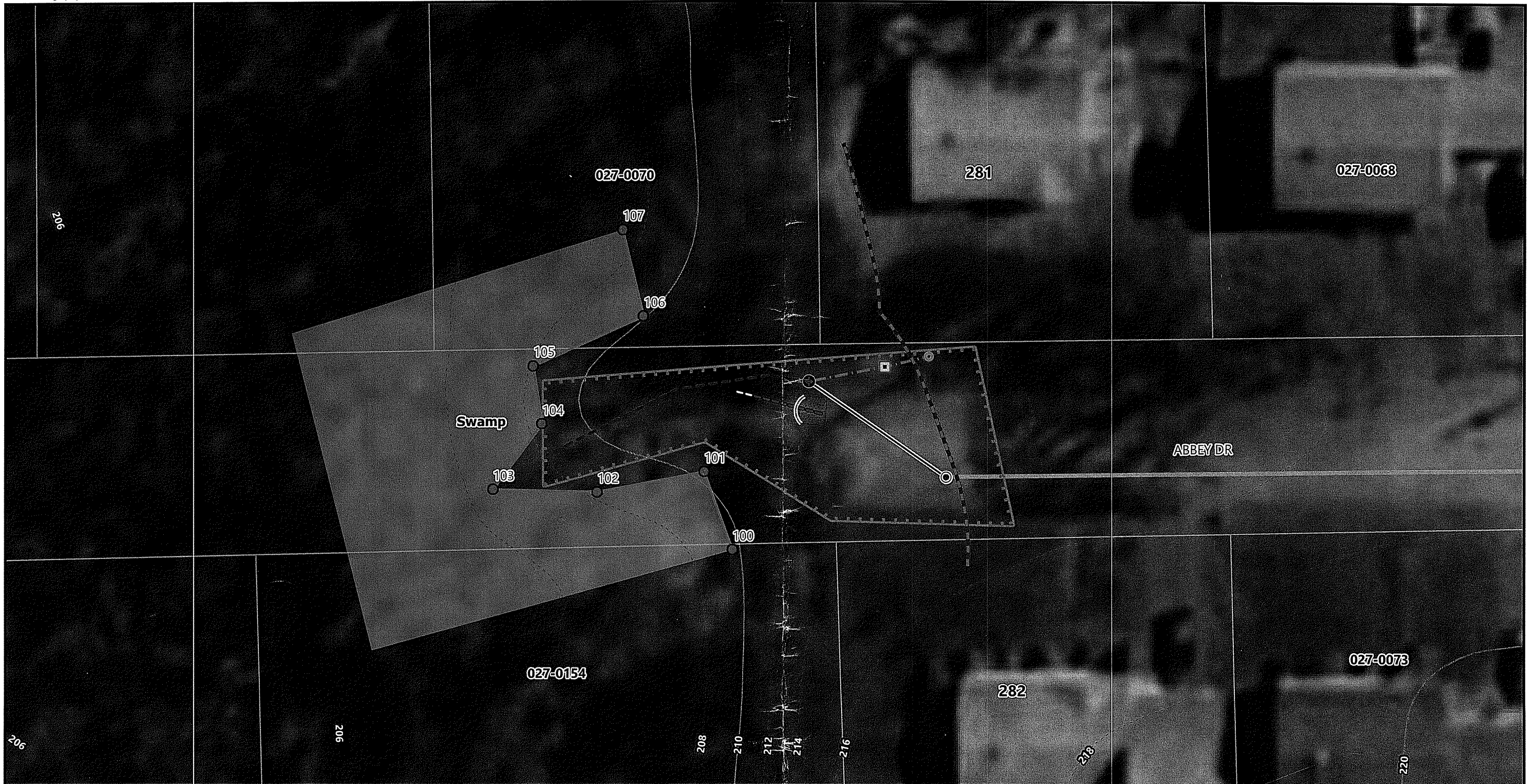
1. PRIOR TO STARTING ANY SITE WORK, THE CONTRACTOR SHALL NOTIFY APPROPRIATE AGENCIES AND SHALL INSTALL EROSION CONTROL MEASURES AS SHOWN ON THE PLANS AND AS IDENTIFIED IN FEDERAL, STATE AND LOCAL APPROVAL DOCUMENTS PERTAINING TO THIS PROJECT.
2. A SOIL EROSION AND SEDIMENTATION CONTROL PLAN HAS BEEN DESIGNED TO PROTECT ON-SITE WETLANDS AND WATERCOURSES AND OFF-SITE AREAS DURING AND AFTER CONSTRUCTION.
3. IN AREAS WHERE HIGH RUNOFF VELOCITIES OR HIGH SEDIMENT LOADS ARE EXPECTED, TWO LINES OF COMPOST FILTER SOCK (CFS) WILL BE INSTALLED BACK TO BACK.
4. TYPICAL CRUSHED-STONE CONSTRUCTION ENTRANCE/EXITS WILL BE CONSTRUCTED AT EACH STREET ACCESS POINT WITHIN THE PROJECT AREA.
5. ONCE WORK IS COMPLETE, FINAL SURFACE TREATMENT CONSISTING OF STRAW OR CELLULOSE MULCH WILL BE APPLIED TO STABILIZE THE DISTURBED AREAS. ANY SOIL DISTURBANCE ASSOCIATED WITH EQUIPMENT ACCESS TO STRUCTURES OR STRUCTURE EXCAVATIONS SHOULD BE MULCHED WITH STRAW ON ALL DISTURBED AREAS AS SOON AS POSSIBLE BUT NOT MORE THAN 14 DAYS AFTER THE CONSTRUCTION ACTIVITY IN THAT AREA HAS TEMPORARILY OR PERMANENTLY CEASED.
6. IN ACCORDANCE WITH THE RIPDES GENERAL PERMIT, ALL STORMWATER CONTROL MEASURES, DISTURBED AREAS, AREAS USED FOR THE STORAGE OF MATERIALS THAT ARE EXPOSED TO PRECIPITATION (INCLUDING UNSTABILIZED SOIL STOCKPILES), DISCHARGE LOCATIONS AND LOCATIONS WHERE VEHICLES ENTER OR EXIT THE SITE, AS OUTLINED IN PART IV OF THIS PERMIT, MUST BE INSPECTED BY OR UNDER THE SUPERVISION OF THE APPLICANT AT LEAST ONCE EVERY SEVEN (7) CALENDAR DAYS AND WITHIN TWENTY-FOUR (24) HOURS AFTER ANY STORM EVENT WHICH GENERATES AT LEAST 0.25 INCHES OF RAINFALL PER TWENTY-FOUR (24) HOUR PERIOD AND/OR AFTER A SIGNIFICANT AMOUNT OF RUNOFF. SUCH AREAS SHALL BE INSPECTED FOR EVIDENCE OF, OR THE POTENTIAL FOR, POLLUTANTS ENTERING THE WATERS OF THE STATE OR A SEPARATE STORM SEWER SYSTEM. ALL BMPS SHALL BE MAINTAINED TO PREVENT UNCONTROLLED RELEASES OF MEASURABLE AMOUNTS OF SEDIMENT OR SEDIMENT LADEN WATER FROM TRAVELING BEYOND THE LIMITS OF DISTURBANCE.
7. SEDIMENT SHALL BE REMOVED FROM BEHIND BARRIERS IF GREATER THAN 6 INCHES DEEP OR AS NEEDED.
8. DAMAGED OR DETERIORATED EROSION/SEDIMENTATION CONTROL ITEMS WILL BE REPAIRED IMMEDIATELY AFTER IDENTIFICATION.
9. EROSION CONTROL MEASURES SHALL REMAIN IN PLACE UNTIL ALL DISTURBED EARTH HAS BEEN SECURELY STABILIZED. ONCE THE SITE IS STABILIZED, THE STRAW BALES WILL BE REMOVED OR BROKEN UP AND SPREAD AS MULCH. ALL OTHER CONTROLS SHALL BE REMOVED AND PROPERLY DISPOSED OF BY THE CONTRACTOR.
10. IN THE EVENT OF A FUEL SPILL OR EQUIPMENT MALFUNCTION RESULTING IN A RELEASE OF HAZARDOUS MATERIAL, ALL WORK WILL BE STOPPED IN THIS AREA UNTIL THE RELEASE/SPILL IS CLEANED UP.
11. EQUIPMENT USED FOR CONSTRUCTION WILL BE PROPERLY MAINTAINED AND OPERATED TO REDUCE THE CHANCES OF SPILL OCCURRENCES OF PETROLEUM PRODUCTS. REFUELING OF EQUIPMENT WILL BE REQUIRED TO CARRY SPILL CONTAINMENT AND PREVENTION DEVICES (I.E., ABSORBENT PADS, CLEAN UP RAGS, FIVE GALLON CONTAINERS, ABSORBENT MATERIAL, ETC.) AT ALL TIMES. IN ADDITION, MAINTENANCE EQUIPMENT AND REPLACEMENT PARTS FOR CONSTRUCTION EQUIPMENT WILL BE ON-HAND TO REPAIR FAILURES AND STOP A SPILL IN THE EVENT OF EQUIPMENT MALFUNCTION.
12. ANY HAZARDOUS WASTE SPILLS SHALL BE CLEANED UP IMMEDIATELY, AND IF THE SPILL AMOUNT IS EQUAL TO OR EXCEEDS THE EPA REPORTABLE QUANTITY (RQ) FOR THAT SUBSTANCE IN ACCORDANCE WITH 40 CFR PARTS 101.117, 117.117, OR 302, THE CONTRACTOR SHALL IMMEDIATELY CONTACT THE NATIONAL RESPONSE CENTER AT 1-800-424-8802. THE CONTRACTOR WILL ALSO BE RESPONSIBLE FOR SUBMITTING IN WRITING A DESCRIPTION OF THE RELEASE TO THE EPA REGIONAL OFFICE AND RIDEM PROVIDING THE DATE AND CIRCUMSTANCES OF THE RELEASE AND THE STEPS TO BE TAKEN TO PREVENT ANOTHER RELEASE. DIRECTIONS FOR CLEANING UP SPILLS SHALL BE CLEARLY POSTED AT A DESIGNATED ON-SITE LOCATION, AND CONSTRUCTION PERSONNEL SHALL BE MADE AWARE OF THE PROCEDURES AND LOCATION OF CLEANUP SUPPLIES. PERSONNEL SHALL WEAR APPROPRIATE PROTECTIVE GEAR AND HAVE PROPER TRAINING TO PREVENT INJURY FROM CONTACT WITH ANY HAZARDOUS SUBSTANCES.
13. NO GRADE CHANGES ARE PROPOSED.

AS SPECIFIED IN THE LETTER OF APPROVAL
 DATED OCT - 5 2021 FILE # 21-0163
 NO CHANGES ALLOWED WITHOUT PRIOR APPROVAL
 APPROVED PLANS MUST BE AT CONSTRUCTION SITE
Marilyn L. Freeman

**Proposed Rectifier and Anode Bed Project
Abbey Drive**

Notes
Cumberland, RI





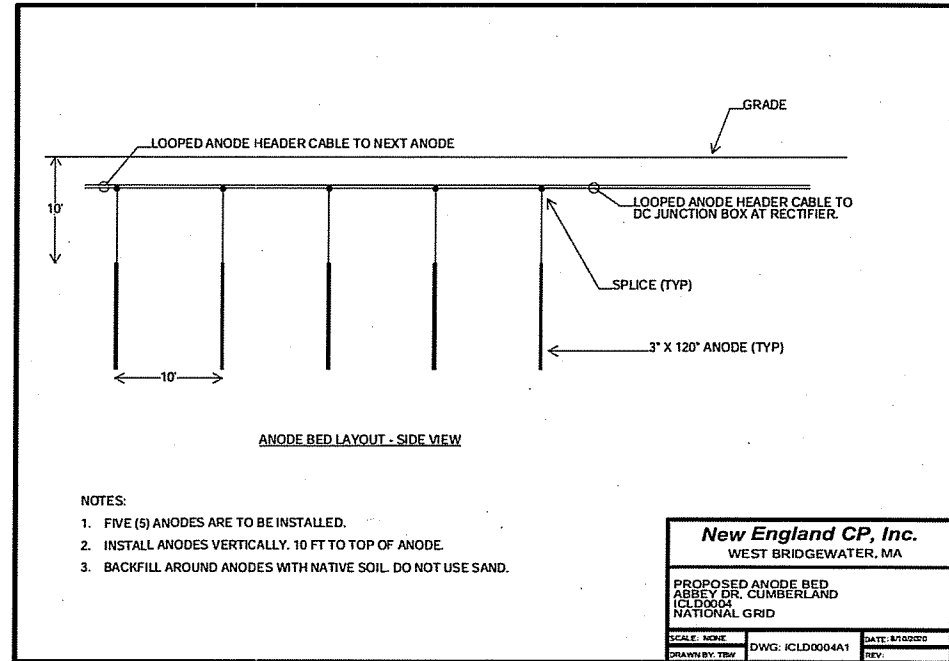
	Existing Pole		Proposed Anode Bed		Wetland Delineation Flag
	Existing Gas Cap		Proposed Anode Cable		50-foot Perimeter Wetland
	Proposed Rectifier		Proposed Pipe Cable		Delineated Wetland Edge
	Proposed Anchor		Proposed Underground AC Service		Swamp
	Proposed Stone Check Dam		Existing Drainage Swale		Parcels
	Proposed Limit of Disturbance and Compost Filter Sock (CFS)		Existing Eroded Ditch		2-ft Contours
			Existing Gas Main		10-ft Contours

Proposed Rectifier and Anode Bed Project
Abbey Drive

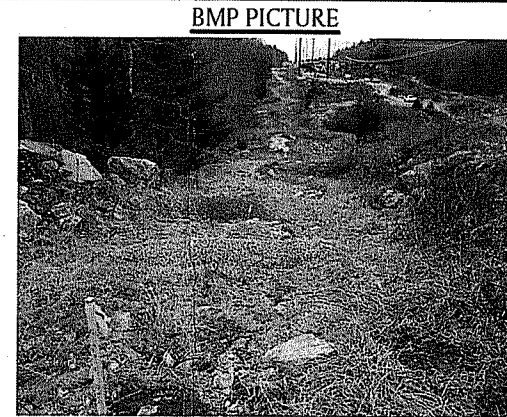
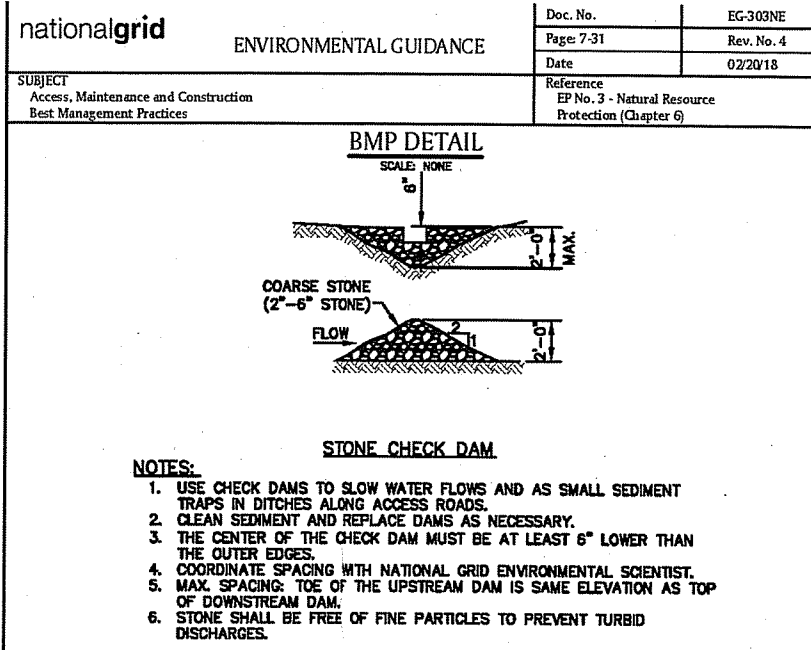
DEPARTMENT OF ENVIRONMENTAL MANAGEMENT
 RIDEM Request for Preliminary Determination
 OFFICE OF WATER RESOURCES
 FRESHWATER WETLANDS PROGRAM
 APPROVED Page 2 of 3 CONDITIONS
 AS SPECIFIED IN THE LETTER OF APPROVAL
 OCT - 5 2021 Date: 5/28/2021
 Source: GIS National Grid, VHB

NO CHANGES PERMITTED WITHOUT APPROVAL
 APPROVED PLANS MUST BE AT CONSTRUCTION SITE



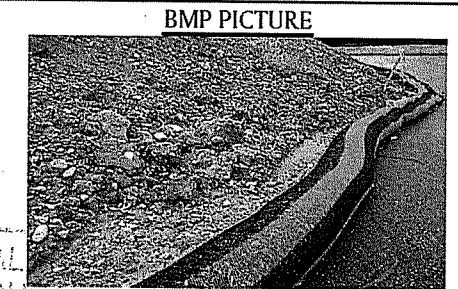
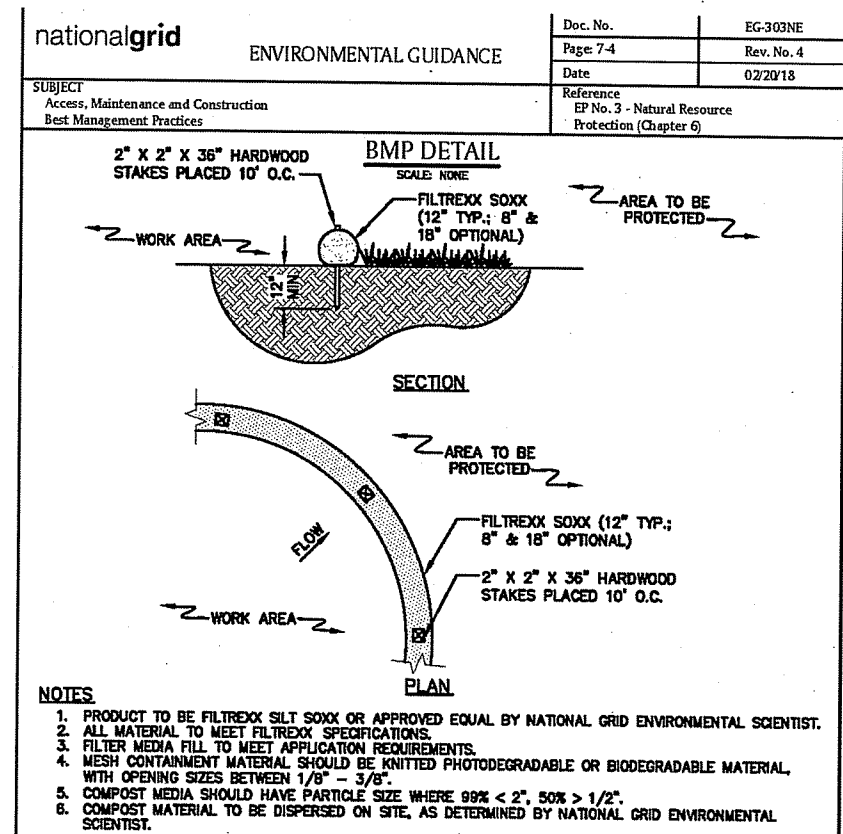


Detail #1



APPROVED BY: VICE PRESIDENT, ENVIRONMENTAL SERVICES
PRINTED COPIES ARE NOT DOCUMENT CONTROLLED; FOR LATEST AUTHORIZED VERSION PLEASE REFER TO THE NATIONAL GRID ENVIRONMENTAL INFOINET SITE.

Detail #2



APPROVED BY: VICE PRESIDENT, ENVIRONMENTAL SERVICES
PRINTED COPIES ARE NOT DOCUMENT CONTROLLED; FOR LATEST AUTHORIZED VERSION PLEASE REFER TO THE NATIONAL GRID ENVIRONMENTAL INFOINET SITE.

Detail #3

DEPARTMENT OF ENVIRONMENTAL
OFFICE OF WATER RESOURCES
FRESHWATER
APPROVED
AS SPECIFIED IN THE LETTER OF APPROVAL
DATED OCT - 5 - 2021 FILE #
NO CHANGES ALLOWED WITHOUT PRIOR APPROVAL
APPROVED PLANS MUST BE AT CONSTRUCTION SITE
Nancy L. Freeman

**Proposed Rectifier and Anode Bed Project
Abbey Drive**

Details
Cumberland, RI

nationalgrid

