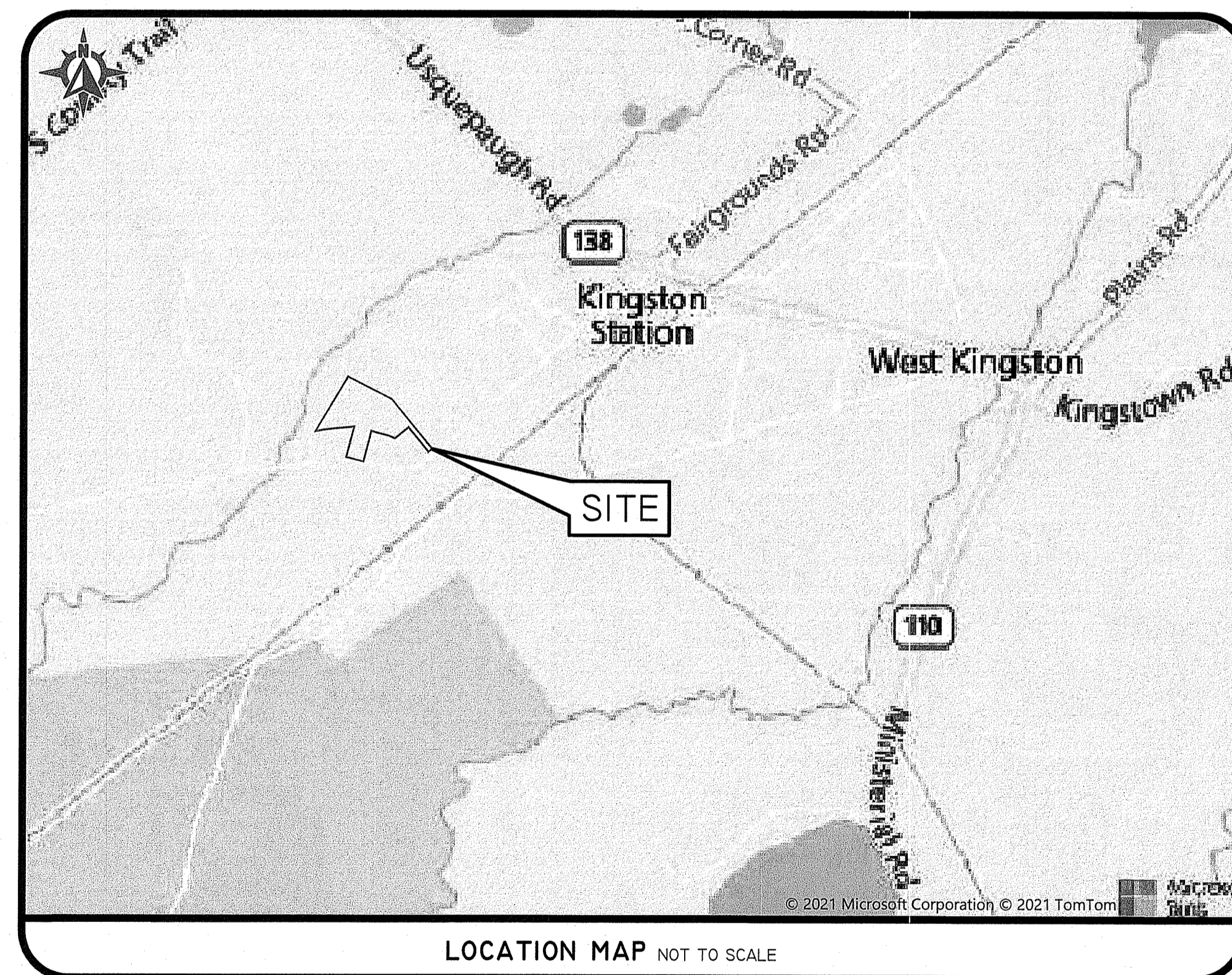


RIDEM PRELIMINARY DETERMINATION

551 LIBERTY LANE

LOCATED ON 551 LIBERTY LANE
SOUTH KINGSTOWN, RHODE ISLAND

ASSESSOR'S PLAT 21-3 LOT 21



LOCATION MAP NOT TO SCALE

SHEET LIST

- 1 COVER SHEET
- 2 AERIAL AND HALF MILE RADIUS
- 3 NOTES AND LEGEND
- 4 EXISTING CONDITIONS PLAN
- 5 SOIL EROSION & SEDIMENT CONTROL PLAN
- 6 SITE LAYOUT PLAN
- 7 GRADING AND UTILITIES PLAN
- 8 POND COMPLEX A1 DETAILS
- 9 POND COMPLEX A2 DETAILS
- 10 STORMCRETE DETAILS
- 11 DETAIL SHEET

DEPARTMENT OF ENVIRONMENTAL MANAGEMENT
OFFICE OF WATER RESOURCES
FRESHWATER WETLANDS PROGRAM
APPROVED WITH CONDITIONS
AS SPECIFIED IN THE LETTER OF APPROVAL
DATED JAN 11 2022 FILE # 21-0215
NO CHANGES ALLOWED WITHOUT PRIOR APPROVAL
APPROVED PLANS MUST BE AT CONSTRUCTION SITE

Nancy L. Freeman

Environmental Management
JAN 06 2022
Office of Water Resources

SESC / O&M
THE SOIL EROSION AND SEDIMENT CONTROL PLAN (SESC) AND STORMWATER OPERATION AND MAINTENANCE PLAN (O&M) ARE REQUIRED DOCUMENTS WITH THIS PLAN SET AND MUST BE MAINTAINED BY THE CONTRACTOR AND OWNER ON SITE.

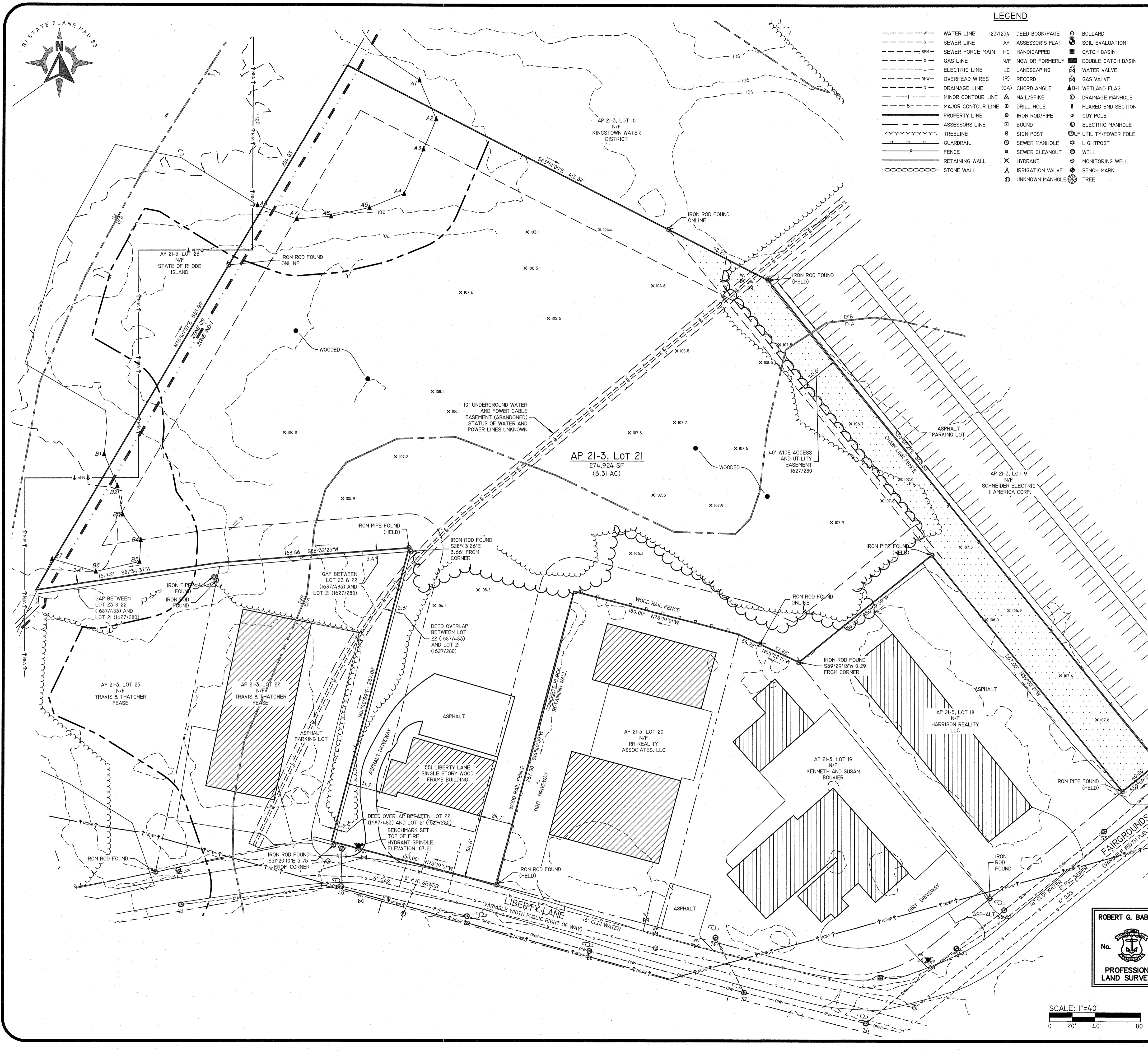
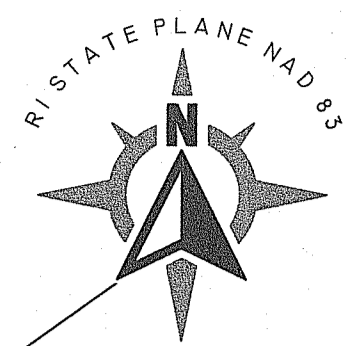
DiPrete Engineering
Two Stafford Court Cranston, RI 02920
tel 401-943-1000 fax 401-464-6666 www.diprete-eng.com
Boston • Providence • Newport

DANA R. NISBET
No. 11876
REGISTERED PROFESSIONAL ENGINEER CIVIL

THIS PLAN SET WAS NOT PREPARED FOR CONSTRUCTION PURPOSES UNLESS STAMPED ISSUED FOR CONSTRUCTION AND STAMPED BY ENGINEERING. PROFESSIONAL ENGINEER OF DIPRETE ENGINEERING. DIPRETE ENGINEERING ONLY WARRANTS PLANS ON A DIPRETE PROFESSIONAL ENGINEER'S LICENSE OF DIPRETE ENGINEERING. DIPRETE ENGINEERING DOES NOT WARRANT PLANS BY ANY OTHER PARTY. THE CONTRACTOR IS RESPONSIBLE FOR ALL OF THE MEANS, METHODS, DESIGN, MATERIALS, UTILITIES, WORK ON THIS PLAN ARE APPROXIMATE ONLY. DIPRETE ENGINEERING ASSUMES NO RESPONSIBILITY FOR COMPLIANCE IN THE IMPLEMENTATION OF THE PLAN AND ONLY DIPRETE ENGINEERING ASSUMES NO RESPONSIBILITY FOR SEE UTILITY NOTES ON SHEET.

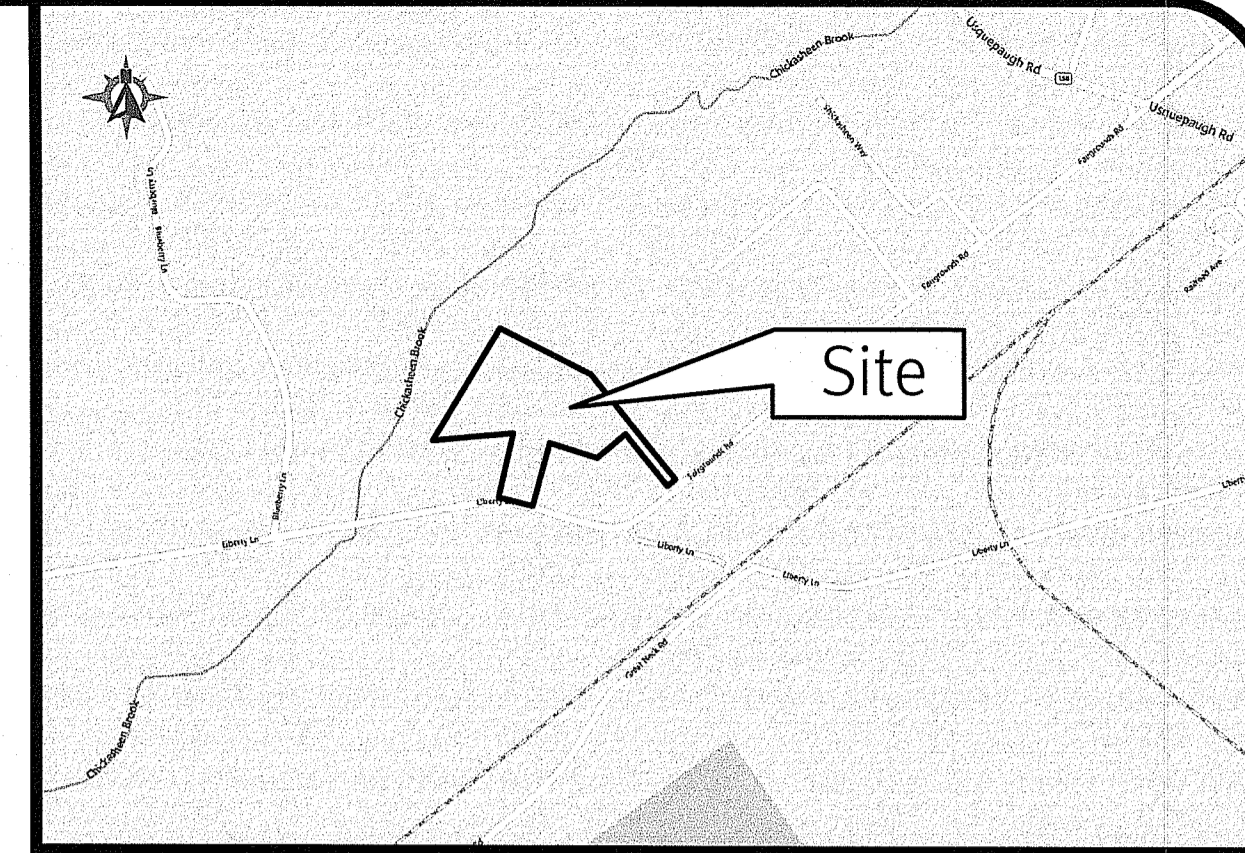
NO.	DATE	DESCRIPTION	DESIGN BY: N.M.P.
1	01-11-2022	LIBERTY RESPONSE TO COMMENTS	N.M.P.
2	01-24-2022	RIDEM RESPONSE TO COMMENTS	N.M.P.
3	01-24-2022	RIDEM PRELIMINARY DETERMINATION	N.M.P.
4	01-24-2022	RIDEM PRELIMINARY DETERMINATION	N.M.P.
5	01-24-2022	RIDEM PRELIMINARY DETERMINATION	N.M.P.
6	01-24-2022	RIDEM PRELIMINARY DETERMINATION	N.M.P.
7	01-24-2022	RIDEM PRELIMINARY DETERMINATION	N.M.P.
8	01-24-2022	RIDEM PRELIMINARY DETERMINATION	N.M.P.
9	01-24-2022	RIDEM PRELIMINARY DETERMINATION	N.M.P.
10	01-24-2022	RIDEM PRELIMINARY DETERMINATION	N.M.P.
11	01-24-2022	RIDEM PRELIMINARY DETERMINATION	N.M.P.

COVER SHEET
551 LIBERTY LANE
ASSESSOR'S PLAT 21-3 LOT 21
SOUTH KINGSTOWN, RHODE ISLAND
PREPARED FOR:
SOUTH COUNTY POST & BEAM, INC.
52 LIBERTY LANE, WEST KINGSTOWN, RHODE ISLAND
TEL 401-783-4445 FAX 401-783-4494



LEGEND

W	WATER LINE	123/1234	DEED BOOK/PAGE	○	BOLLARD
S	SEWER LINE	AP	ASSESSOR'S PLAT	○	SOIL EVALUATION
SFM	SEWER FORCE MAIN	HC	HANDICAPPED	□	CATCH BASIN
G	GAS LINE	N/F	NOW OR FORMERLY	□	DOUBLE CATCH BASIN
E	ELECTRIC LINE	LC	LANDSCAPING	○	WATER VALVE
OHW	OVERHEAD WIRES	(R)	RECORD	○	GAS VALVE
D	DRAINAGE LINE	(CA)	CHORD ANGLE	○	WETLAND FLAG
MCL	MINOR CONTOUR LINE	▲	NAIL/SPIKE	○	DRAINAGE MANHOLE
MCL	MAJOR CONTOUR LINE	○	DRILL HOLE	○	FLARED END SECTION
P	PROPERTY LINE	○	IRON ROD/PIPE	○	GUY POLE
AS	ASSESSOR'S LINE	□	BOUND	○	ELECTRIC MANHOLE
T	TREELINE	□	SIGN POST	○	UTILITY/POWER POLE
G	GUARDRAIL	○	SEWER MANHOLE	○	LIGHTPOST
F	FENCE	○	SEWER CLEANOUT	○	WELL
RW	RETAINING WALL	○	HYDRANT	○	MONITORING WELL
SW	STONE WALL	○	IRRIGATION VALVE	○	BENCH MARK
		○	UNKNOWN MANHOLE	○	TREE



- GENERAL NOTES**
- THE PARCEL IS FOUND ON ASSESSOR'S PLAT 21-3, LOT 21 IN THE TOWN OF SOUTH KINGSTOWN, WASHINGTON COUNTY, RHODE ISLAND.
 - THE OWNER PER DEED BOOK 1627, PAGE 266 IS SOUTH COUNTY POST AND BEAM, INC.
 - THIS SITE IS LOCATED IN FEMA FLOOD ZONE X. REFERENCE FEMA FLOOD INSURANCE RATE MAP 44090C0108H, MAP REVISED OCTOBER 19, 2010. THIS DESIGNATION MAY CHANGE BASED UPON REVIEW BY A FLOOD ZONE SPECIALIST OR BY THE RESULTS OF A COMPREHENSIVE FLOOD STUDY.
 - THE PARCEL IS ZONED IND-1 BASED ON THE TOWN OF SOUTH KINGSTOWN GIS MAP. ANY OVERLAY DISTRICTS, SPECIAL PERMITS OR VARIANCES SPECIFIC TO THIS SITE ARE NOT TAKEN INTO CONSIDERATION. PLEASE CONTACT THE ZONING DEPARTMENT FOR ANY ADDITIONAL INFORMATION OR FOR A CERTIFICATE OF ZONING.
 - THERE WERE NOT CEMETERIES, GRAVE SITES AND OR BURIAL GROUNDS OBSERVED WITHIN THE LIMITS OF THE SURVEY.
 - FIELD SURVEY PERFORMED BY DIPRETE ENGINEERING ON APRIL 14, 2021. THIS PLAN REFLECTS ON THE GROUND CONDITIONS AS OF THAT DATE.
 - PARCEL SUBJECT TO USE RESTRICTION OF RECORD PER DEED BOOK 1627, PAGE 266.
 - THIS SURVEY WAS PREPARED WITHOUT THE BENEFIT OF A TITLE REPORT. DIPRETE ENGINEERING IS NOT RESPONSIBLE FOR ANY UNKNOWN OR UNRECORDED EASEMENTS, DEEDS OR CLAIMS THAT A TITLE REPORT WOULD DISCLOSE.
 - ELEVATIONS SHOWN HEREON, IN U.S. SURVEY FEET, ARE REFERENCED TO THE NORTH AMERICAN VERTICAL DATUM OF 1988 (NAVD 88), AS DETERMINED BY DIPRETE ENGINEERING USING REAL TIME KINEMATIC G.P.S. OBSERVATIONS.
 - CONTOUR DATA SHOWN ON THIS PLAN CONFORMS TO A T-4 TOPOGRAPHICAL SURVEY STANDARD AS ADOPTED BY THE RHODE ISLAND BOARD OF REGISTRATION FOR PROFESSIONAL LAND SURVEYORS; SAID DATA IS BASED ON ELEVATION INFORMATION THAT WAS COLLECTED WITH AIRBORNE LIDAR TECHNOLOGY FOR THE ENTIRE AREA OF RHODE ISLAND BETWEEN APRIL 22 AND MAY 6, 2011 AS PART OF THE NORTHEAST LIDAR PROJECT. THIS DATA'S POSITIONAL ACCURACY AND RELIABILITY HAS NOT BEEN VERIFIED BY DIPRETE ENGINEERING AND IS SUBJECT TO CHANGES AN AUTHORITY FIELD SURVEY MAY DISCLOSE.

- PLAN REFERENCES:**
- ADMINISTRATIVE SUBDIVISION PLAN ASSESSOR'S PLAT 12-3, LOTS 9, 10 & 21, SOUTH KINGSTOWN, RHODE ISLAND. PLAN BY DOWDELL ENGINEERING, INC. DATED SEPTEMBER 27, 2016 PLAN BOOK 2016, PAGE 48

- UTILITY NOTES**
- ALL EXISTING UTILITIES DEPICTED ARE SHOWN ACCORDANCE WITH UTILITY QUALITY LEVEL C AS DEFINED IN CLASSIC STANDARD 36-02 STANDARD GUIDELINES FOR THE COLLECTION AND DEPICTION OF EXISTING SUBSURFACE UTILITY DATA, LATEST REVISION.
 - ALL EXISTING UNDERGROUND UTILITIES SHOWN WERE PROVIDED BY OTHERS AND ARE APPROXIMATE ONLY. LOCATIONS MUST BE DETERMINED IN THE FIELD BEFORE EXCAVATION, BLASTING, UTILITY INSTALLATION, BACKFILLING, GRADING, PAVEMENT RESTORATION, AND ALL OTHER SITE WORK. ALL UTILITY COMPANIES, PUBLIC AND PRIVATE, MUST BE CONTACTED INCLUDING THOSE IN CONTROL OF UTILITIES NOT SHOWN ON THESE DOCUMENTS. CONTACT DIG SAFE A MINIMUM OF 72 WORKING HOURS PRIOR TO ANY CONSTRUCTION AT 811. DIG SAFE IS RESPONSIBLE FOR CONTACTING MEMBER UTILITY COMPANIES. DIG SAFE MEMBER UTILITY COMPANIES ARE RESPONSIBLE TO MARK ONLY THE FACILITIES THAT THEY OWN OR MAINTAIN. NON DIG SAFE MEMBER COMPANIES ARE NOT NOTIFIED BY DIG SAFE. IT IS THE CONTRACTOR'S RESPONSIBILITY TO INVESTIGATE AND NOTIFY IF ANY PRIVATELY OWNED OR NON DIG SAFE MEMBER UTILITIES ARE IN THE AREA.
 - PER THE CODE OF FEDERAL REGULATIONS - TITLE 29, PART 1926 IT IS THE SITE CONTRACTOR'S RESPONSIBILITY TO OBTAIN ACCURATE UNDERGROUND UTILITY LINE LOCATIONS FROM THE UTILITY COMPANIES, UTILITY OWNERS AND, OR VIA UNDERGROUND UTILITY LOCATION EQUIPMENT AS NEEDED TO ESTABLISH ACCURATE LOCATIONS PRIOR TO ANY EXCAVATION. THE USE OF PROFESSIONAL UTILITY LOCATING COMPANIES PRIOR TO ANY EXCAVATION IS RECOMMENDED.
 - DIPRETE ENGINEERING IS NOT A PROFESSIONAL UTILITY LOCATION COMPANY, AND IS NOT RESPONSIBLE FOR UNDERGROUND UTILITIES, DEPICTED OR NOT, EITHER IN SERVICE OR ABANDONED, ANY SIZES, LOCATIONS, EXISTENCE, OR LACK OF EXISTENCE OF UTILITIES SHOWN ON THESE PLANS SHOULD BE CONSIDERED APPROXIMATE UNTIL VERIFIED BY A PROFESSIONAL UTILITY LOCATION COMPANY. DIPRETE ENGINEERING ASSUMES NO RESPONSIBILITY FOR DAMAGES INCURRED.
 - UTILITY PLAN REFERENCES
 - WATER, SEWER AND GAS INFORMATION OBTAINED FROM PLAN AND PROFILE FOR WEST KNIGHTON INDUSTRIAL AREA. PLAN BY DOWDELL ENGINEERING ASSOCIATES, DATED NOVEMBER 9, 1992

DEPARTMENT OF ENVIRONMENTAL MANAGEMENT
OFFICE OF WATER RESOURCES
FRESHWATER WETLANDS PROGRAM
APPROVED WITH CONDITIONS
AS SPECIFIED IN THE LETTER OF APPROVAL
DATED JAN 11 2022 FILE # 21-0215
NO CHANGES ALLOWED WITHOUT PRIOR APPROVAL
APPROVED PLANS MUST BE AT CONSTRUCTION SITE

Nancy L. Freeman

SURVEYOR'S CERTIFICATE

THIS SURVEY HAS BEEN CONDUCTED AND THE PLAN HAS BEEN PREPARED PURSUANT TO SECTION 9 OF THE RULES AND REGULATIONS ADOPTED BY THE RHODE ISLAND STATE BOARD OF REGISTRATION FOR PROFESSIONAL LAND SURVEYORS ON NOVEMBER 25, 2015, AS FOLLOWS:

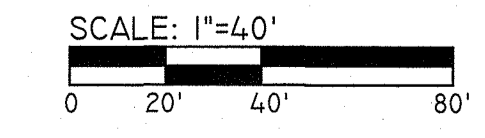
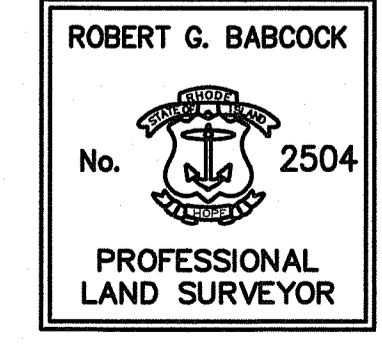
- COMPREHENSIVE BOUNDARY SURVEY CLASS 1
- TOPOGRAPHIC SURVEY CLASS 1-4

THE PURPOSE FOR THE CONDUCT OF THE SURVEY AND FOR THE PREPARATION OF THE PLAN IS AS FOLLOWS: PERIMETER RETRACEMENT WITH TOPOGRAPHY FOR SITE ENGINEERING AND PERMITTING.

ROBERT G. BABCOCK, RPLS #2504, COA #LS.000A160

4/16/21

RI Environmental Management
JAN 6 2022
Office of Water Resources



Diprete Engineering
Two Stafford Court, Cranston, RI 02920
tel 401-943-1000 fax 401-464-6000 www.diprete-eng.com

Boston • Providence • Newport

DANA R. NISBET
No. 11876
REGISTERED PROFESSIONAL ENGINEER CIVIL

THIS PLAN SET MUST NOT BE USED FOR CONSTRUCTION PURPOSES UNLESS IT IS APPROVED BY THE TOWN OF SOUTH KINGSTOWN AND STAMPED BY AN AUTHORIZED PROFESSIONAL ENGINEER OR ARCHITECT.

DIPRETE ENGINEERING ONLY WARRANTS PLANS ON A DIPRETE ENGINEERING CONTRACT. DIPRETE ENGINEERING IS NOT A PROFESSIONAL ENGINEER OF DIPRETE ENGINEERING. DIPRETE ENGINEERING DOES NOT WARRANT PLANS BY ANY OTHER PARTY. DIPRETE ENGINEERING ASSUMES NO RESPONSIBILITY FOR THE DESIGN, CONSTRUCTION, OR MAINTENANCE OF ANY UTILITIES SHOWN ON THESE PLANS. THE CONTRACTOR'S RESPONSIBILITY IS TO INVESTIGATE AND NOTIFY IF ANY PRIVATELY OWNED OR NON DIG SAFE MEMBER UTILITIES ARE IN THE AREA.

NO.	DATE	DESCRIPTION	BY:	DESIGN BY: N.M.P.
1	01-22-2021	PRELIMINARY DETERMINATION	N.M.P.	
2	01-22-2021	FIELD RESPONSE TO COMMENTS	N.M.P.	
3	01-22-2021	FIELD RESPONSE TO COMMENTS	N.M.P.	
4	01-22-2021	FIELD RESPONSE TO COMMENTS	N.M.P.	

EXISTING CONDITIONS PLAN

551 LIBERTY LANE
ASSESSOR'S PLAT 21-3 LOT 21
SOUTH KINGSTOWN, RHODE ISLAND

PREPARED FOR:
SOUTH COUNTY POST & BEAM, INC.
521 LIBERTY LANE, WEST KINGSTOWN, RHODE ISLAND
TEL 401-783-4445 FAX 401-783-4494

SHEET 4 OF 11

GENERAL NOTES:

1. THE TEMPORARY SEDIMENT TRAP SHALL MEET ALL REQUIREMENTS FOR TEMPORARY SEDIMENT TRAPS OUTLINED IN THE RHODE ISLAND SOIL EROSION AND SEDIMENT CONTROL HANDBOOK (LATEST REVISION) SECTION SIX: SEDIMENT CONTROL MEASURES
2. THE TEMPORARY SEDIMENT TRAP MUST PROVIDE A STORAGE VOLUME FOR ONE INCH OF RUNOFF FROM THE CONTRIBUTING AREA. HALF OF THE STORAGE MUST BE PROVIDED IN THE FORM OF WET STORAGE. SEE DETAIL BELOW SECTION 6 OF THE RISESCH.
3. ALL CUT AND FILL SLOPES MUST BE 2:1 OR FLATTER EXCEPT FOR THE EXCAVATED WET STORAGE AREA WHERE SLOPES MUST NOT EXCEED 1.5:1.
4. THE OUTLET MUST BE LOCATED AT THE MOST DISTANT HYDRAULIC POINT FROM THE INLET.
5. THE OUTLET CONSISTS OF A PERVIOUS STONE DIKE WITH A CORE OF MODIFIED RIPRAP AND FACED ON THE UPSTREAM SIDE WITH STONE.
6. TEMPORARY SEDIMENT TRAPS MUST OUTLET ONTO STABILIZED GROUND.
7. MAXIMUM HEIGHT OF A TEMPORARY SEDIMENT TRAP EMBANKMENT IS LIMITED TO 5 FEET (BOTTOM OF DRY STORAGE TO TOP OF EMBANKMENT). TOTAL EMBANKMENT HEIGHT MUST NOT EXCEED 6 FEET (BOTTOM OF WET STORAGE TO TOP OF EMBANKMENT).
8. SIDE SLOPES OF THE EMBANKMENT MUST BE 2:1 OR FLATTER.
9. MODIFIED RIPRAP SHALL MEET THE REQUIREMENTS OF RIDOT STANDARD SPECIFICATIONS FOR ROAD AND BRIDGE CONSTRUCTION SUBSECTION M.10.03.2.
10. FILTER STONE SHALL MEET THE REQUIREMENTS OF RIDOT STANDARD SPECIFICATIONS FOR ROAD AND BRIDGE CONSTRUCTION SUBSECTION M.01.03 TABLE 1, COLUMN V FILTER STONE.

INSPECTION, MAINTENANCE, AND REMOVAL REQUIREMENTS:

1. INSTALL "SEDIMENT STORAGE" STAKE WITH A MARKER AT ONE HALF OF THE WET STORAGE VOLUME.
2. INSPECT THE TEMPORARY SEDIMENT TRAP AT LEAST ONCE A WEEK AND WITHIN 24 HOURS OF THE END OF A STORM WITH A RAINFALL AMOUNT OF 0.25 INCH OR GREATER.
3. CHECK THE OUTLET TO ENSURE THAT IT IS STRUCTURALLY SOUND AND HAS NOT BEEN DAMAGED BY EROSION OR CONSTRUCTION EQUIPMENT.
4. CHECK FOR SEDIMENT ACCUMULATION AND FILTRATION PERFORMANCE.
5. WHEN SEDIMENTS HAVE ACCUMULATED TO ONE HALF THE MINIMUM REQUIRED VOLUME OF THE WET STORAGE, DEWATER THE TRAP AS NEEDED, REMOVE SEDIMENTS AND RESTORE THE TRAP TO ITS ORIGINAL DIMENSIONS.
6. DISPOSE OF THE SEDIMENT REMOVED FROM THE BASIN IN A SUITABLE AREA AS DESIGNATED BY THE GEOTECHNICAL ENGINEER.
7. THE TEMPORARY SEDIMENT TRAP MAY BE REMOVED AFTER THE CONTRIBUTING DRAINAGE AREA IS STABILIZED.

INSTALLATION NOTES:

1. CLEAR, GRUB AND STRIP ALL VEGETATION AND ROOT MAT FROM ALL PROPOSED EMBANKMENT AND OUTLET AREA.
2. REMOVE STONES AND ROCKS WHOSE DIAMETER IS GREATER THAN THREE (3) INCHES AND OTHER DEBRIS.
3. EXCAVATE WET STORAGE AND CONSTRUCT THE EMBANKMENT AND/OR OUTLET AS NEEDED TO ATTAIN THE NECESSARY STORAGE REQUIREMENTS.
4. USE ONLY FILL MATERIAL FOR THE EMBANKMENT THAT IS FREE FROM EXCESSIVE ORGANICS, DEBRIS, LARGE ROCKS (OVER SIX (6) INCHES) OR OTHER UNSUITABLE MATERIALS. COMPACT THE EMBANKMENT IN 9-INCH LAYERS BY TRAVERSING WITH EQUIPMENT WHILE IT IS BEING CONSTRUCTED.
5. STABILIZE THE EARTHEN EMBANKMENT USING ANY OF THE FOLLOWING MEASURES: SEEDING FOR TEMPORARY VEGETATION COVER; SEEDING FOR PERMANENT VEGETATIVE COVER; OR SLOPE PROTECTION, IMMEDIATELY AFTER INSTALLATION.

SOIL EROSION CONTROL LEGEND

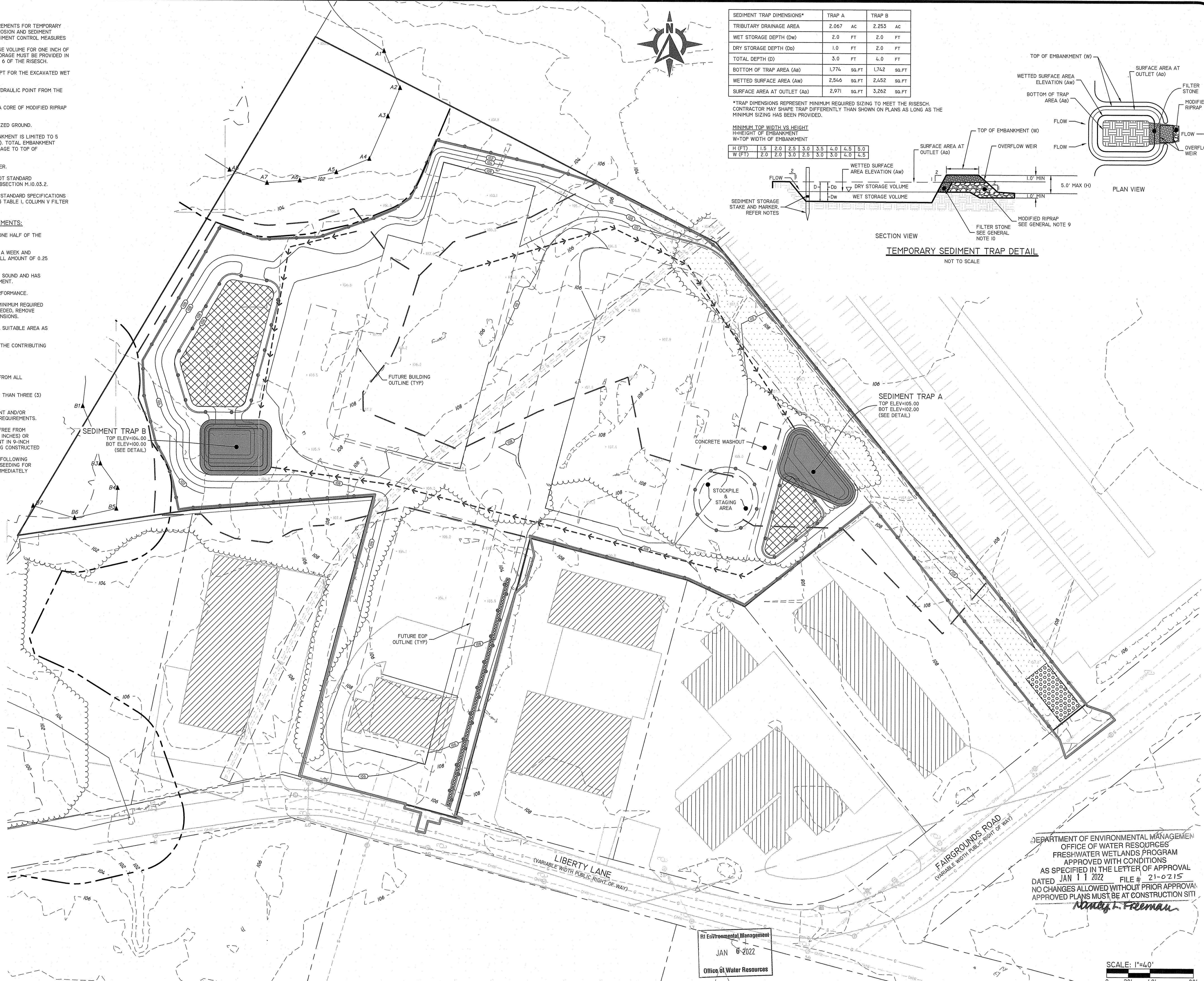
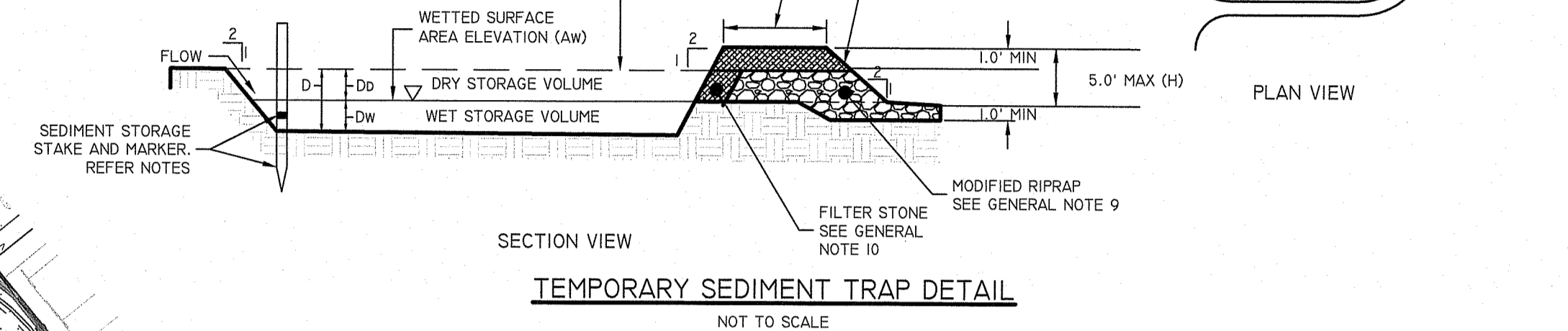
- DIVERSION RUNOFF CONVEYANCE MEASURE (SWALE AND/OR BERM)
- TEMPORARY SEDIMENT TRAP
- EROSION CONTROL (COMPOST SOCK, SILT FENCE (R1 STD 9.2.0), OR APPROVED EQUAL)
- LIMIT OF DISTURBANCE (NO SEDIMENT CONTROL)
- LIMIT OF DISTURBANCE (WITH SEDIMENT CONTROL)
- TRIBUTARY AREA TO SESC BHP
- CONSTRUCTION ENTRANCE (RIDOT STD 9.9.0)
- INFILTRATING AREA (TO BE PROTECTED BY COMPOST SOCK OR SILT FENCE)
- FINAL CONTOUR GRADE
- INLET SEDIMENT CONTROL

SEDIMENT TRAP DIMENSIONS*	TRAP A	TRAP B
TRIBUTARY DRAINAGE AREA	2,067 AC	2,253 AC
WET STORAGE DEPTH (Dw)	2.0 FT	2.0 FT
DRY STORAGE DEPTH (Dd)	1.0 FT	2.0 FT
TOTAL DEPTH (D)	3.0 FT	4.0 FT
BOTTOM OF TRAP AREA (Ab)	1,774 SQ.FT	1,742 SQ.FT
WETTED SURFACE AREA (Aw)	2,546 SQ.FT	2,452 SQ.FT
SURFACE AREA AT OUTLET (Ad)	2,971 SQ.FT	3,262 SQ.FT

*TRAP DIMENSIONS REPRESENT MINIMUM REQUIRED SIZING TO MEET THE RISESCH. CONTRACTOR MAY SHAPE TRAP DIFFERENTLY THAN SHOWN ON PLANS AS LONG AS THE MINIMUM SIZING HAS BEEN PROVIDED.

MINIMUM TOP WIDTH VS HEIGHT
H=HEIGHT OF EMBANKMENT
W=TOP WIDTH OF EMBANKMENT

H (FT)	1.5	2.0	2.5	3.0	3.5	4.0	4.5	5.0
W (FT)	2.0	2.0	3.0	3.0	3.0	4.0	4.0	4.5



DEPARTMENT OF ENVIRONMENTAL MANAGEMENT
OFFICE OF WATER RESOURCES
FRESHWATER WETLANDS PROGRAM
APPROVED WITH CONDITIONS
AS SPECIFIED IN THE LETTER OF APPROVAL
DATED JAN 11 2022 FILE # 21-0215
NO CHANGES ALLOWED WITHOUT PRIOR APPROVAL
APPROVED PLANS MUST BE AT CONSTRUCTION SITE

Mandy J. Freeman

RI Environmental Management
JAN 6 2022
Office of Water Resources

SCALE: 1"=40'
0 20' 40' 80'

DiPrete Engineering
Two Stafford Court, Cranston, RI 02920
Tel: 401-949-1000 Fax: 401-464-6066 www.diprete-eng.com

Boston Providence Newport

DANA R. NISBET
No. 11876
REGISTERED PROFESSIONAL ENGINEER CIVIL

THIS PLAN SET MUST NOT BE USED FOR CONSTRUCTION PURPOSES UNLESS STAMPED AND SIGNED FOR CONSTRUCTION AND STAMPED BY ENGINEERING. PROFESSIONAL ENGINEER OF DIPRETE ENGINEERING.

DIPRETE ENGINEERING ONLY WARRANTS PLANS ON A DIPRETE ENGINEERING PROJECT. DIPRETE ENGINEERING DOES NOT WARRANT PLANS BY ANY OTHER PARTY. THE CONTRACTOR IS RESPONSIBLE FOR ALL OF THE PERMITS AND COMPLIANCE IN THE IMPLEMENTATION OF THE PLAN AND EXISTING UTILITIES SHOWN ON THIS PLAN ARE APPROXIMATE. ONLY DIPRETE ENGINEERING ASSUMES NO RESPONSIBILITY FOR SEE UTILITY NOTE ON SHEET.

NO.	DATE	DESCRIPTION	BY:	DESIGN BY:
1	01-21-2021	ISSUE RESPONSE TO COMMENTS	N.M.P.	N.M.P.
2	01-22-2021	ISSUE RESPONSE TO COMMENTS	N.M.P.	N.M.P.
3	02-02-2021	ISSUE PRELIMINARY DETERMINATION	N.M.P.	N.M.P.
4	02-02-2021	ISSUE PRELIMINARY DETERMINATION	N.M.P.	N.M.P.
5	02-02-2021	ISSUE PRELIMINARY DETERMINATION	N.M.P.	N.M.P.
6	02-02-2021	ISSUE PRELIMINARY DETERMINATION	N.M.P.	N.M.P.
7	02-02-2021	ISSUE PRELIMINARY DETERMINATION	N.M.P.	N.M.P.
8	02-02-2021	ISSUE PRELIMINARY DETERMINATION	N.M.P.	N.M.P.
9	02-02-2021	ISSUE PRELIMINARY DETERMINATION	N.M.P.	N.M.P.
10	02-02-2021	ISSUE PRELIMINARY DETERMINATION	N.M.P.	N.M.P.
11	02-02-2021	ISSUE PRELIMINARY DETERMINATION	N.M.P.	N.M.P.
12	02-02-2021	ISSUE PRELIMINARY DETERMINATION	N.M.P.	N.M.P.
13	02-02-2021	ISSUE PRELIMINARY DETERMINATION	N.M.P.	N.M.P.
14	02-02-2021	ISSUE PRELIMINARY DETERMINATION	N.M.P.	N.M.P.
15	02-02-2021	ISSUE PRELIMINARY DETERMINATION	N.M.P.	N.M.P.
16	02-02-2021	ISSUE PRELIMINARY DETERMINATION	N.M.P.	N.M.P.
17	02-02-2021	ISSUE PRELIMINARY DETERMINATION	N.M.P.	N.M.P.
18	02-02-2021	ISSUE PRELIMINARY DETERMINATION	N.M.P.	N.M.P.
19	02-02-2021	ISSUE PRELIMINARY DETERMINATION	N.M.P.	N.M.P.
20	02-02-2021	ISSUE PRELIMINARY DETERMINATION	N.M.P.	N.M.P.
21	02-02-2021	ISSUE PRELIMINARY DETERMINATION	N.M.P.	N.M.P.
22	02-02-2021	ISSUE PRELIMINARY DETERMINATION	N.M.P.	N.M.P.
23	02-02-2021	ISSUE PRELIMINARY DETERMINATION	N.M.P.	N.M.P.
24	02-02-2021	ISSUE PRELIMINARY DETERMINATION	N.M.P.	N.M.P.
25	02-02-2021	ISSUE PRELIMINARY DETERMINATION	N.M.P.	N.M.P.
26	02-02-2021	ISSUE PRELIMINARY DETERMINATION	N.M.P.	N.M.P.
27	02-02-2021	ISSUE PRELIMINARY DETERMINATION	N.M.P.	N.M.P.
28	02-02-2021	ISSUE PRELIMINARY DETERMINATION	N.M.P.	N.M.P.
29	02-02-2021	ISSUE PRELIMINARY DETERMINATION	N.M.P.	N.M.P.
30	02-02-2021	ISSUE PRELIMINARY DETERMINATION	N.M.P.	N.M.P.
31	02-02-2021	ISSUE PRELIMINARY DETERMINATION	N.M.P.	N.M.P.
32	02-02-2021	ISSUE PRELIMINARY DETERMINATION	N.M.P.	N.M.P.
33	02-02-2021	ISSUE PRELIMINARY DETERMINATION	N.M.P.	N.M.P.
34	02-02-2021	ISSUE PRELIMINARY DETERMINATION	N.M.P.	N.M.P.
35	02-02-2021	ISSUE PRELIMINARY DETERMINATION	N.M.P.	N.M.P.
36	02-02-2021	ISSUE PRELIMINARY DETERMINATION	N.M.P.	N.M.P.
37	02-02-2021	ISSUE PRELIMINARY DETERMINATION	N.M.P.	N.M.P.
38	02-02-2021	ISSUE PRELIMINARY DETERMINATION	N.M.P.	N.M.P.
39	02-02-2021	ISSUE PRELIMINARY DETERMINATION	N.M.P.	N.M.P.
40	02-02-2021	ISSUE PRELIMINARY DETERMINATION	N.M.P.	N.M.P.
41	02-02-2021	ISSUE PRELIMINARY DETERMINATION	N.M.P.	N.M.P.
42	02-02-2021	ISSUE PRELIMINARY DETERMINATION	N.M.P.	N.M.P.
43	02-02-2021	ISSUE PRELIMINARY DETERMINATION	N.M.P.	N.M.P.
44	02-02-2021	ISSUE PRELIMINARY DETERMINATION	N.M.P.	N.M.P.
45	02-02-2021	ISSUE PRELIMINARY DETERMINATION	N.M.P.	N.M.P.
46	02-02-2021	ISSUE PRELIMINARY DETERMINATION	N.M.P.	N.M.P.
47	02-02-2021	ISSUE PRELIMINARY DETERMINATION	N.M.P.	N.M.P.
48	02-02-2021	ISSUE PRELIMINARY DETERMINATION	N.M.P.	N.M.P.
49	02-02-2021	ISSUE PRELIMINARY DETERMINATION	N.M.P.	N.M.P.
50	02-02-2021	ISSUE PRELIMINARY DETERMINATION	N.M.P.	N.M.P.
51	02-02-2021	ISSUE PRELIMINARY DETERMINATION	N.M.P.	N.M.P.
52	02-02-2021	ISSUE PRELIMINARY DETERMINATION	N.M.P.	N.M.P.
53	02-02-2021	ISSUE PRELIMINARY DETERMINATION	N.M.P.	N.M.P.
54	02-02-2021	ISSUE PRELIMINARY DETERMINATION	N.M.P.	N.M.P.
55	02-02-2021	ISSUE PRELIMINARY DETERMINATION	N.M.P.	N.M.P.
56	02-02-2021	ISSUE PRELIMINARY DETERMINATION	N.M.P.	N.M.P.
57	02-02-2021	ISSUE PRELIMINARY DETERMINATION	N.M.P.	N.M.P.
58	02-02-2021	ISSUE PRELIMINARY DETERMINATION	N.M.P.	N.M.P.
59	02-02-2021	ISSUE PRELIMINARY DETERMINATION	N.M.P.	N.M.P.
60	02-02-2021	ISSUE PRELIMINARY DETERMINATION	N.M.P.	N.M.P.
61	02-02-2021	ISSUE PRELIMINARY DETERMINATION	N.M.P.	N.M.P.
62	02-02-2021	ISSUE PRELIMINARY DETERMINATION	N.M.P.	N.M.P.
63	02-02-2021	ISSUE PRELIMINARY DETERMINATION	N.M.P.	N.M.P.
64	02-02-2021	ISSUE PRELIMINARY DETERMINATION	N.M.P.	N.M.P.
65	02-02-2021	ISSUE PRELIMINARY DETERMINATION	N.M.P.	N.M.P.
66	02-02-2021	ISSUE PRELIMINARY DETERMINATION	N.M.P.	N.M.P.
67	02-02-2021	ISSUE PRELIMINARY DETERMINATION	N.M.P.	N.M.P.
68	02-02-2021	ISSUE PRELIMINARY DETERMINATION	N.M.P.	N.M.P.
69	02-02-2021	ISSUE PRELIMINARY DETERMINATION	N.M.P.	N.M.P.
70	02-02-2021	ISSUE PRELIMINARY DETERMINATION	N.M.P.	N.M.P.
71	02-02-2021	ISSUE PRELIMINARY DETERMINATION	N.M.P.	N.M.P.
72	02-02-2021	ISSUE PRELIMINARY DETERMINATION	N.M.P.	N.M.P.
73	02-02-2021	ISSUE PRELIMINARY DETERMINATION	N.M.P.	N.M.P.
74	02-02-2021	ISSUE PRELIMINARY DETERMINATION	N.M.P.	N.M.P.
75	02-02-2021	ISSUE PRELIMINARY DETERMINATION	N.M.P.	N.M.P.
76	02-02-2021	ISSUE PRELIMINARY DETERMINATION	N.M.P.	N.M.P.
77	02-02-2021	ISSUE PRELIMINARY DETERMINATION	N.M.P.	N.M.P.
78	02-02-2021	ISSUE PRELIMINARY DETERMINATION	N.M.P.	N.M.P.
79	02-02-2021	ISSUE PRELIMINARY DETERMINATION	N.M.P.	N.M.P.
80	02-02-2021	ISSUE PRELIMINARY DETERMINATION	N.M.P.	N.M.P.
81	02-02-2021	ISSUE PRELIMINARY DETERMINATION	N.M.P.	N.M.P.
82	02-02-2021	ISSUE PRELIMINARY DETERMINATION	N.M.P.	N.M.P.
83	02-02-2021	ISSUE PRELIMINARY DETERMINATION	N.M.P.	N.M.P.
84	02-02-2021	ISSUE PRELIMINARY DETERMINATION	N.M.P.	N.M.P.
85	02-02-2021	ISSUE PRELIMINARY DETERMINATION	N.M.P.	N.M.P.
86	02-02-2021	ISSUE PRELIMINARY DETERMINATION	N.M.P.	N.M.P.
87	02-02-2021	ISSUE PRELIMINARY DETERMINATION	N.M.P.	N.M.P.
88	02-02-2021	ISSUE PRELIMINARY DETERMINATION	N.M.P.	N.M.P.
89	02-02-2021	ISSUE PRELIMINARY DETERMINATION	N.M.P.	N.M.P.
90	02-02-2021	ISSUE PRELIMINARY DETERMINATION	N.M.P.	N.M.P.
91	02-02-2021	ISSUE PRELIMINARY DETERMINATION	N.M.P.	N.M.P.
92	02-02-2021	ISSUE PRELIMINARY DETERMINATION	N.M.P.	N.M.P.
93	02-02-2021	ISSUE PRELIMINARY DETERMINATION	N.M.P.	N.M.P.
94	02-02-2021	ISSUE PRELIMINARY DETERMINATION	N.M.P.	N.M.P.
95	02-02-2021	ISSUE PRELIMINARY DETERMINATION	N.M.P.	N.M.P.
96	02-02-2021	ISSUE PRELIMINARY DETERMINATION	N.M.P.	N.M.P.
97	02-02-2021	ISSUE PRELIMINARY DETERMINATION	N.M.P.	N.M.P.
98	02-02-2021	ISSUE PRELIMINARY DETERMINATION	N.M.P.	N.M.P.
99	02-02-2021	ISSUE PRELIMINARY DETERMINATION	N.M.P.	N.M.P.
100	02-02-2021	ISSUE PRELIMINARY DETERMINATION	N.M.P.	N.M.P.

SOIL EROSION & SEDIMENT CONTROL PLAN

551 LIBERTY LANE
ASSESSOR'S PLAT 21-3 LOT 21
SOUTH KINGSTOWN, RHODE ISLAND

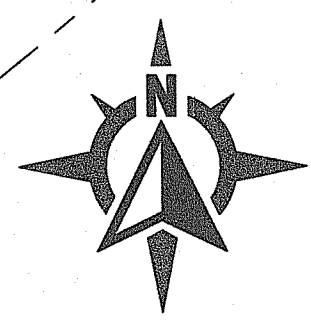
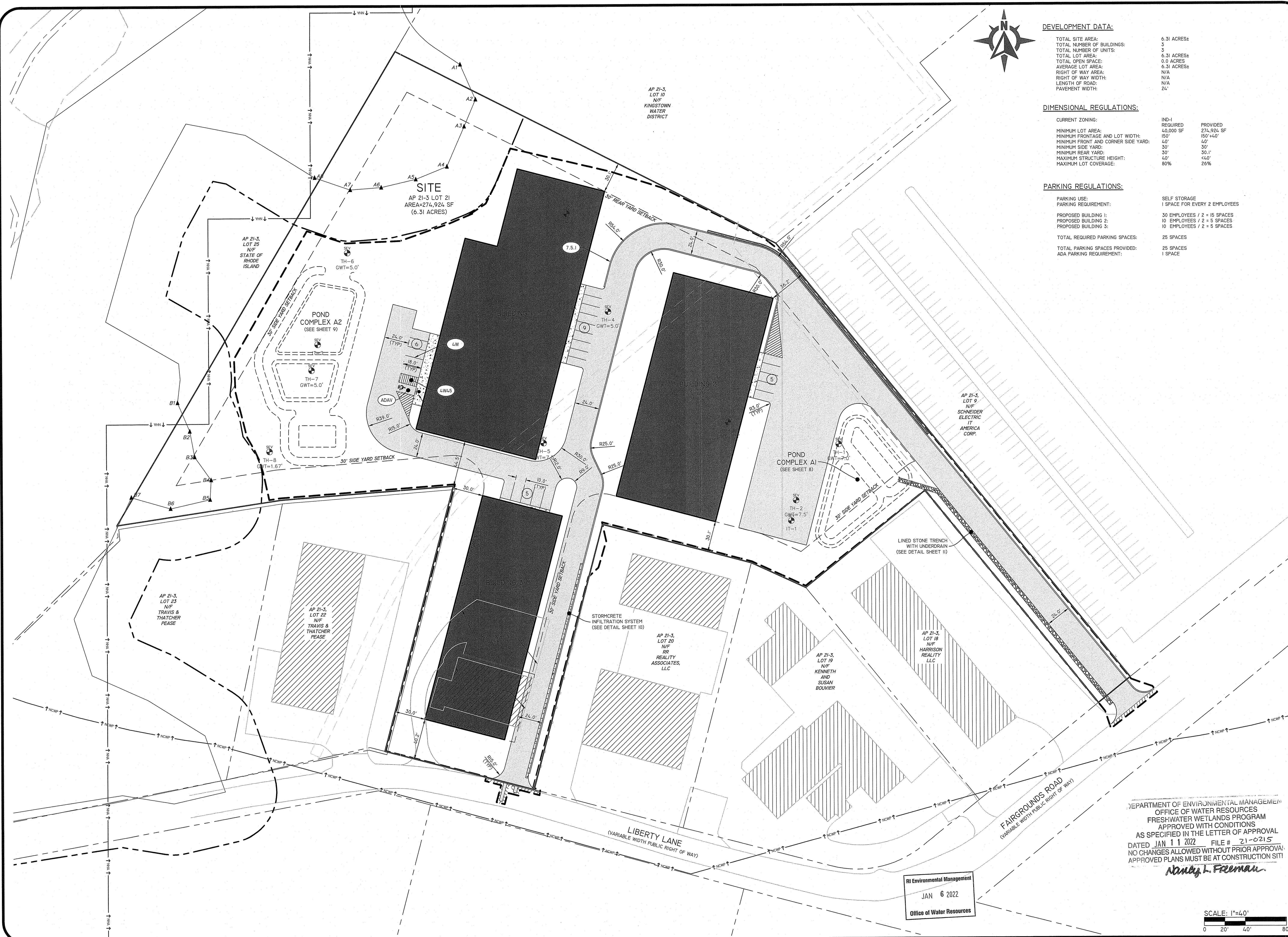
PREPARED FOR:
SOUTH COUNTY POST & BEAM, INC.
521 LIBERTY LANE, WEST KINGSTOWN, RHODE ISLAND
TEL: 401-783-4445 FAX: 401-783-4494

DESIGN BY: N.M.P.

SHEET 5 OF 11

Z:\DC\MAN\PROJECTS\21-008 LIBERTY LANE STORAGE\AUTOCAD DRAWINGS\21-008-SESC.DWG PLOTTED: 1/5/2022

Z:\06\PROJECTS\224-008 LIBERTY LANE STORAGE\AUTOCAD DRAWINGS\224-008-PLAN\DWG PLOTTER: 12/27/2021



DEVELOPMENT DATA:

TOTAL SITE AREA:	6.31 ACRES
TOTAL NUMBER OF BUILDINGS:	3
TOTAL NUMBER OF UNITS:	6.31 ACRES
TOTAL LOT AREA:	0.0 ACRES
TOTAL OPEN SPACE:	6.31 ACRES
AVERAGE LOT AREA:	N/A
RIGHT OF WAY AREA:	N/A
LENGTH OF ROAD:	N/A
PAVEMENT WIDTH:	24'

DIMENSIONAL REGULATIONS:

CURRENT ZONING:	IND-1	PROVIDED
MINIMUM LOT AREA:	40,000 SF	274,924 SF
MINIMUM FRONTAGE AND LOT WIDTH:	150'	150'+4.0'
MINIMUM FRONT AND CORNER SIDE YARD:	40'	40'
MINIMUM SIDE YARD:	30'	30'
MINIMUM REAR YARD:	30'	30.1'
MAXIMUM STRUCTURE HEIGHT:	40'	<40'
MAXIMUM LOT COVERAGE:	80%	26%

PARKING REGULATIONS:

PARKING USE:	SELF STORAGE
PARKING REQUIREMENT:	1 SPACE FOR EVERY 2 EMPLOYEES
PROPOSED BUILDING 1:	30 EMPLOYEES / 2 = 15 SPACES
PROPOSED BUILDING 2:	10 EMPLOYEES / 2 = 5 SPACES
PROPOSED BUILDING 3:	10 EMPLOYEES / 2 = 5 SPACES
TOTAL REQUIRED PARKING SPACES:	25 SPACES
TOTAL PARKING SPACES PROVIDED:	25 SPACES
ADA PARKING REQUIREMENT:	1 SPACE

Diprete Engineering
 Two Stafford Court, Cranston, RI 02920
 Tel: 401-943-1000 Fax: 401-943-6006 www.diprete-eng.com
 Boston • Providence • Newport

DANA R. NISSET
 No. 11878
 REGISTERED PROFESSIONAL ENGINEER CIVIL

THIS PLAN SET MUST NOT BE USED FOR CONSTRUCTION PURPOSES UNLESS IT IS APPROVED BY THE TOWN OF SOUTH KINGSTOWN. A REGISTERED PROFESSIONAL ENGINEER OF DIPRETE ENGINEERING.
 THE CONTRACTOR IS RESPONSIBLE FOR ALL OF THE MEANS, METHODS, SAFETY, PRECAUTIONS AND REQUIREMENTS, AND OSHA REGULATIONS IN THE IMPLEMENTATION OF THIS PLAN AND DESIGN. EXISTING UTILITIES SHOWN ON THIS PLAN ARE APPROXIMATE. DAMAGES INCURRED DUE TO LOCATIONS OF EXISTING UTILITIES, SEE UTILITY NOTE ON SHEET 3.

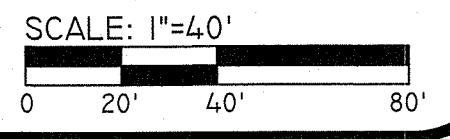
NO.	DATE	DESCRIPTION	BY:
1	12-21-2021	1. REBID RESPONSE TO COMMENTS	N.M.P.
2	01-09-2022	2. REBID RESPONSE TO COMMENTS	N.M.P.
3	02-02-2022	3. PRELIMINARY DETERMINATION	D.V.
4		4. DESCRIPTION	

DESIGN BY: N.M.P.
 DRAWN BY: N.M.P.

DEPARTMENT OF ENVIRONMENTAL MANAGEMENT
 OFFICE OF WATER RESOURCES
 FRESHWATER WETLANDS PROGRAM
 APPROVED WITH CONDITIONS
 AS SPECIFIED IN THE LETTER OF APPROVAL
 DATED JAN 11 2022 FILE # 21-0215
 NO CHANGES ALLOWED WITHOUT PRIOR APPROVAL
 APPROVED PLANS MUST BE AT CONSTRUCTION SITE!

Nancy Freeman

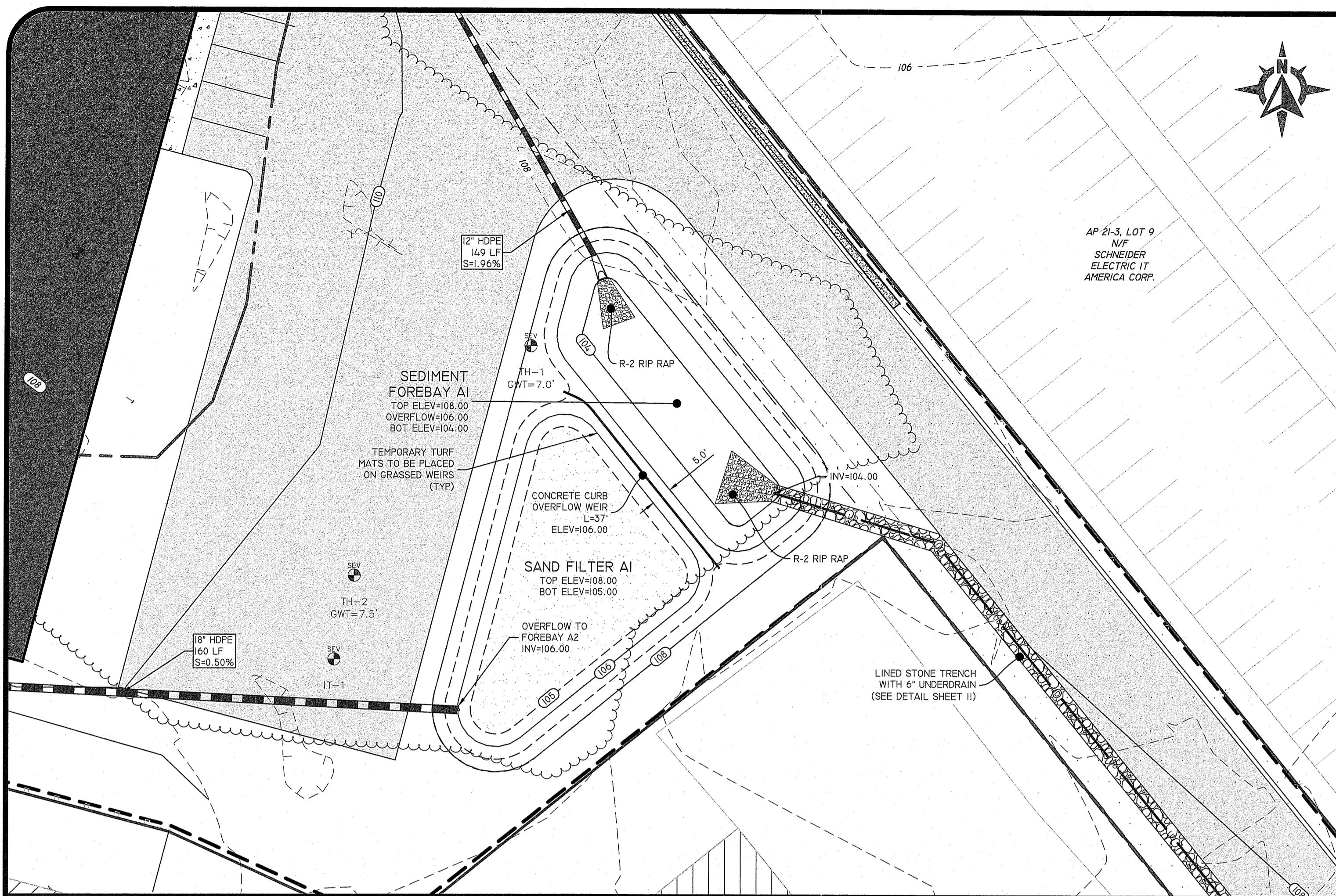
RI Environmental Management
 JAN 6 2022
 Office of Water Resources



SITE LAYOUT PLAN
 551 LIBERTY LANE
 ASSessor's PLAT 21-3 LOT 21
 SOUTH KINGSTOWN, RHODE ISLAND

PREPARED FOR:
SOUTH COUNTY POST & BEAM, INC.
 521 LIBERTY LANE, WEST KINGSTOWN, RHODE ISLAND
 TEL 401-785-4416 FAX 401-785-4494

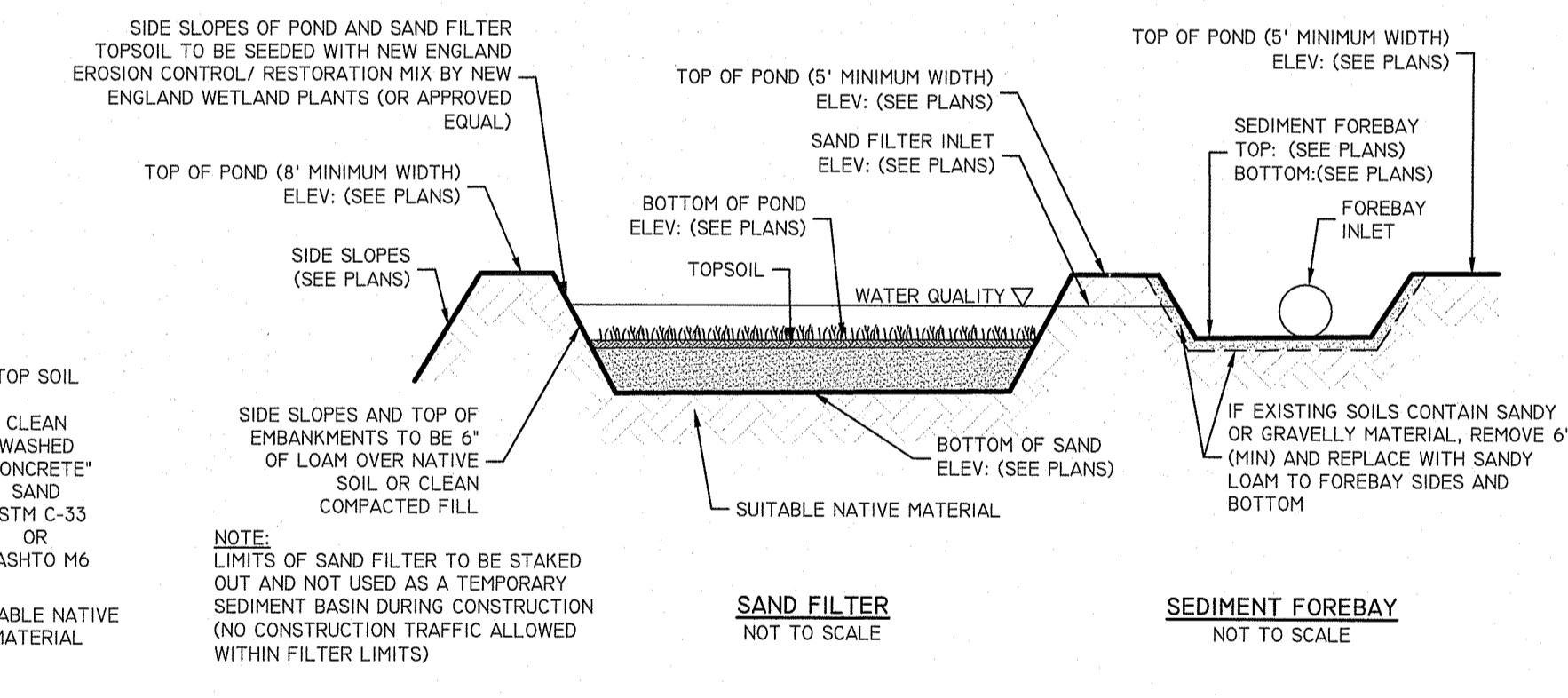
SHEET 6 OF 11



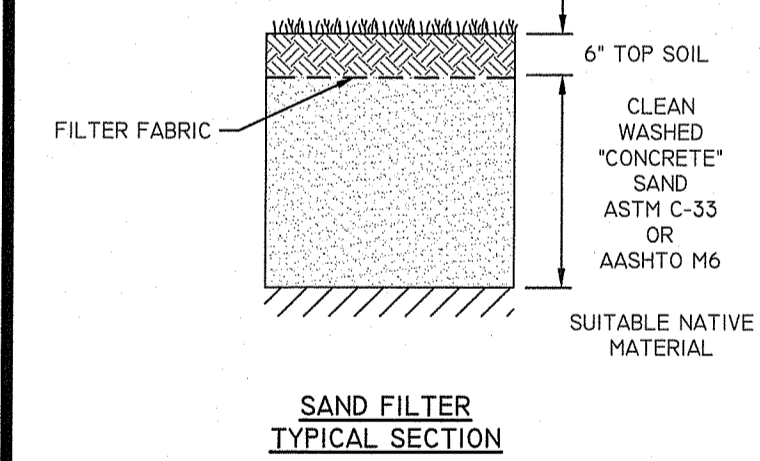
POND COMPLEX AI

SCALE: 1"=20'
0 10' 20' 40'

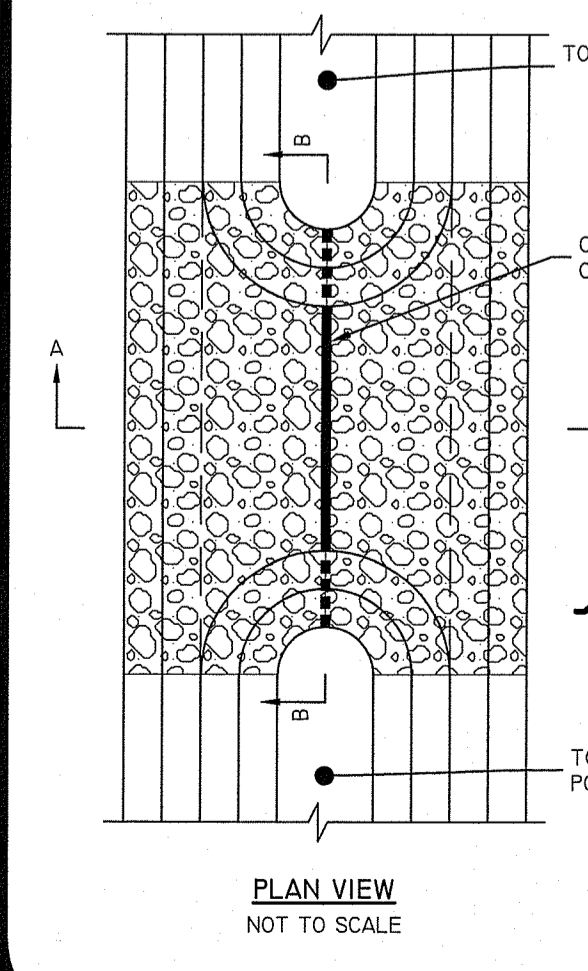
DESCRIPTION	SNDF-AI
TOP OF POND ELEVATION	108.00
100 YEAR STORM ELEVATION	107.42
10 YEAR STORM ELEVATION	106.37
1 YEAR STORM ELEVATION	105.08
WG STORM ELEVATION	103.59
BOTTOM OF POND ELEVATION	105.00
TOP SOIL DEPTH	0.5'
SAND DEPTH	1.5'
BOTTOM OF SAND ELEVATION	103.00
SEASONAL HIGH GWT ELEVATION	101.00
SOIL EVALUATION	TH-1



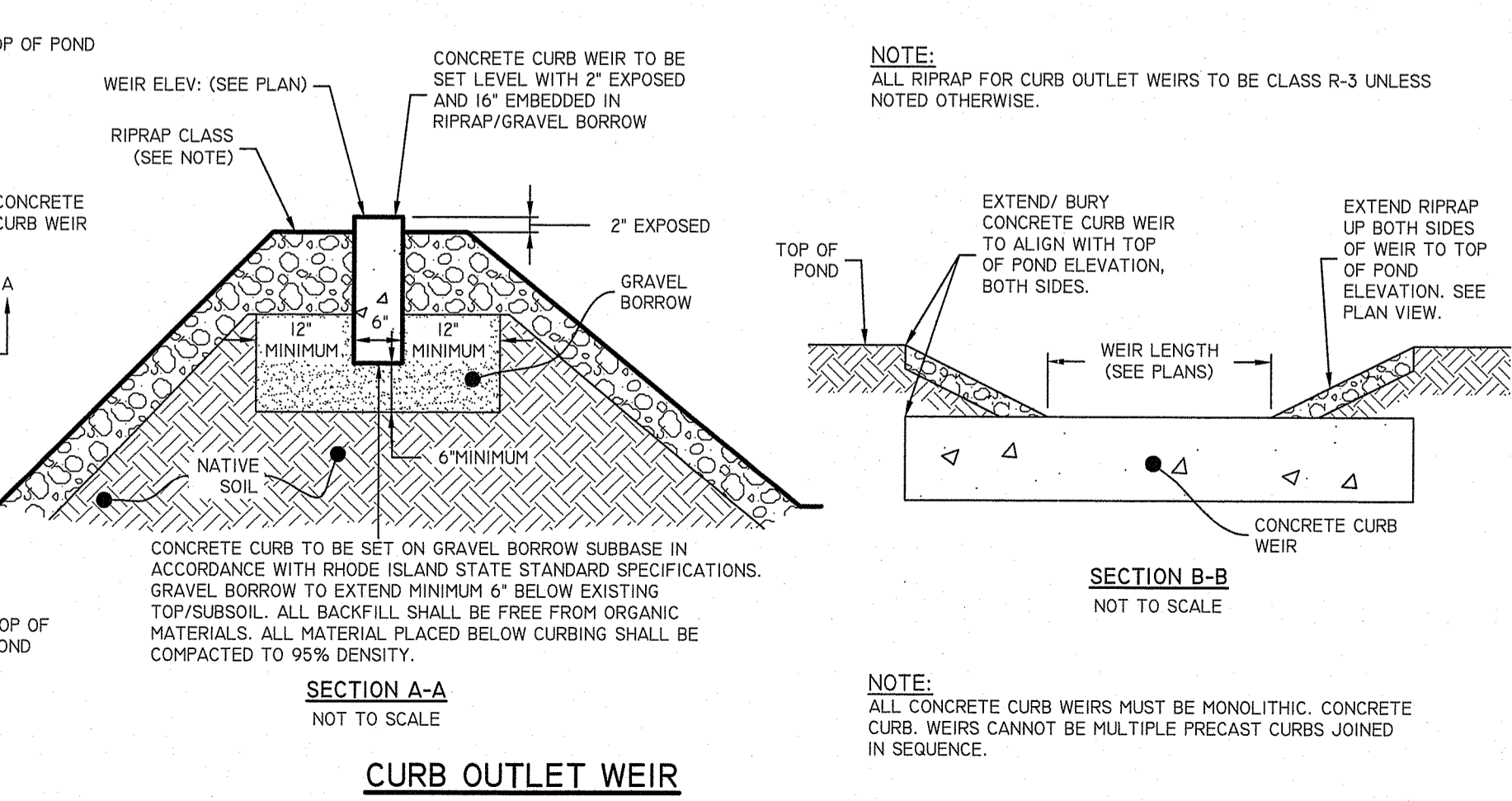
SAND FILTER BMP SYSTEM
NOT TO SCALE



SAND FILTER TYPICAL SECTION



PLAN VIEW
NOT TO SCALE



SECTION A-A
NOT TO SCALE

SECTION B-B
NOT TO SCALE

CURB OUTLET WEIR
NOT TO SCALE

DEPARTMENT OF ENVIRONMENTAL MANAGEMENT
OFFICE OF WATER RESOURCES
FRESHWATER WETLANDS PROGRAM
APPROVED WITH CONDITIONS
AS SPECIFIED IN THE LETTER OF APPROVAL
DATED JAN 11 2022 FILE # 21-0215
NO CHANGES ALLOWED WITHOUT PRIOR APPROVAL
APPROVED PLANS MUST BE AT CONSTRUCTION SITE

Nancy L. Freeman

RI Environmental Management
JAN 6 2022
Office of Water Resources

POND COMPLEX AI DETAILS

551 LIBERTY LANE
SOUTH KINGSTOWN, RHODE ISLAND
PREPARED FOR:
SOUTH COUNTY POST & BEAM, INC.
501 LIBERTY LANE, WEST KINGSTOWN, RHODE ISLAND
TEL: 401-783-4445 FAX: 401-783-4494

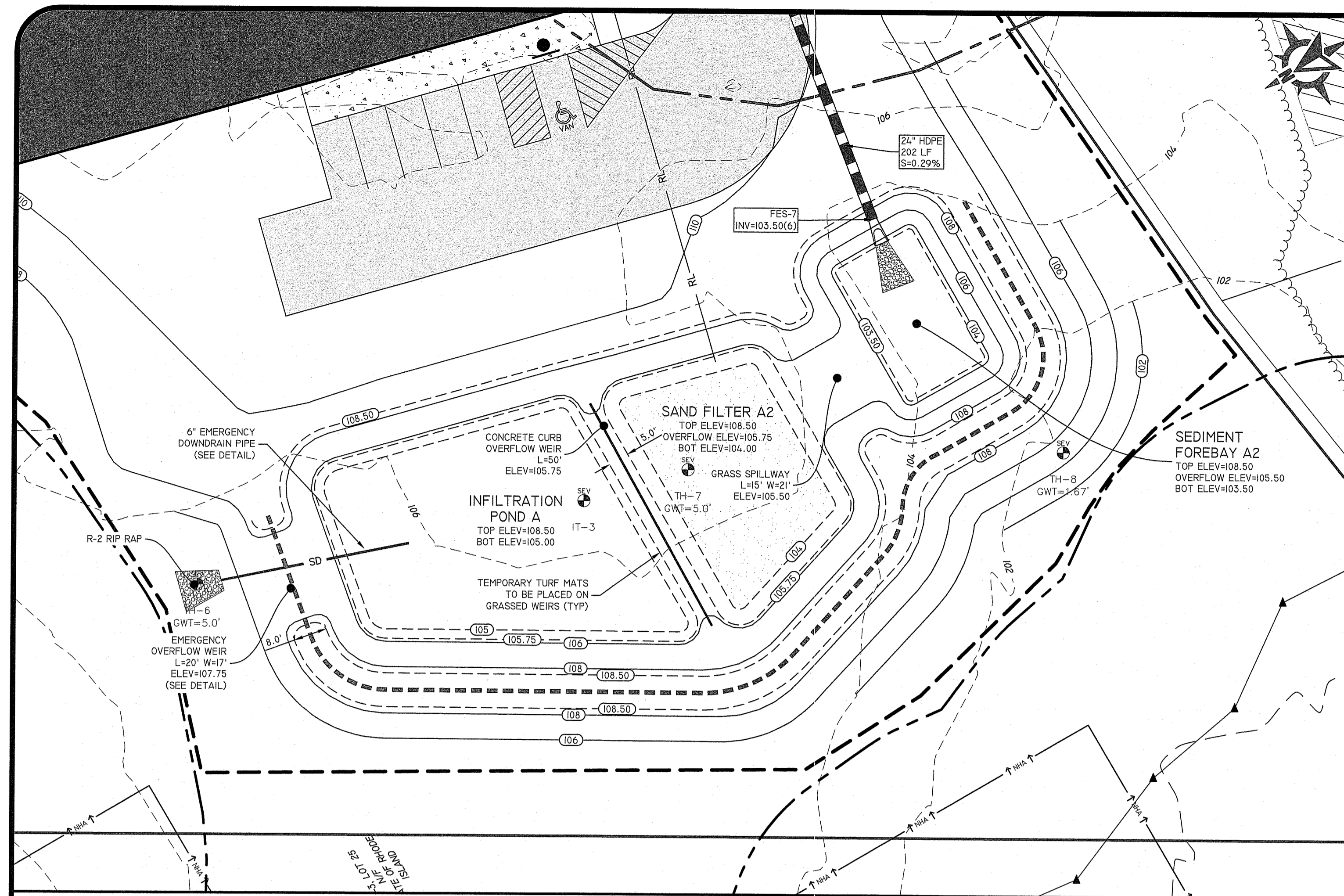
DANA R. NISBET
REGISTERED PROFESSIONAL ENGINEER
CIVIL

THIS PLAN SET IS NOT TO BE USED FOR CONSTRUCTION PURPOSES UNLESS IT IS ACCOMPANIED BY A REGISTERED PROFESSIONAL ENGINEER'S STAMP AND SIGNATURE.
DIPRETE ENGINEERING ONLY Warrants Plans on a Diprete Professional Engineer's Seal and Signature. Diprete Professional Engineer of Diprete Engineering, Diprete Engineering, Inc. and its Associates shall not be liable for any other party's use of the Plans without the written consent of Diprete Engineering, Diprete Engineering, Inc. and its Associates. THE USER'S SAFETY, PRECAUTIONS AND REQUIREMENTS, AND OSHA REQUIREMENTS SHALL BE THE RESPONSIBILITY OF THE USER. EXISTING UTILITIES SHOWN ON THIS PLAN ARE APPROXIMATE. DIPRETE ENGINEERING ASSUMES NO RESPONSIBILITY FOR THE ACCURACY OF EXISTING UTILITIES. SEE UTILITY NOTE ON SHEET 5.

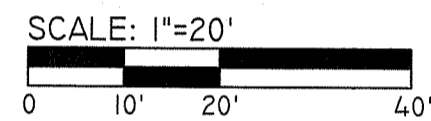
NO.	DATE	DESCRIPTION	BY	DESIGN BY
1	12-21-2021	ISSUED RESPONSE TO COMMENTS	N.M.P.	N.M.P.
2	01-29-2022	ISSUED RESPONSE TO COMMENTS	N.M.P.	N.M.P.
3	01-29-2022	ISSUED RESPONSE TO COMMENTS	N.M.P.	N.M.P.
4	01-29-2022	ISSUED RESPONSE TO COMMENTS	N.M.P.	N.M.P.
5	01-29-2022	ISSUED RESPONSE TO COMMENTS	N.M.P.	N.M.P.
6	01-29-2022	ISSUED RESPONSE TO COMMENTS	N.M.P.	N.M.P.
7	01-29-2022	ISSUED RESPONSE TO COMMENTS	N.M.P.	N.M.P.
8	01-29-2022	ISSUED RESPONSE TO COMMENTS	N.M.P.	N.M.P.
9	01-29-2022	ISSUED RESPONSE TO COMMENTS	N.M.P.	N.M.P.
10	01-29-2022	ISSUED RESPONSE TO COMMENTS	N.M.P.	N.M.P.
11	01-29-2022	ISSUED RESPONSE TO COMMENTS	N.M.P.	N.M.P.
12	01-29-2022	ISSUED RESPONSE TO COMMENTS	N.M.P.	N.M.P.
13	01-29-2022	ISSUED RESPONSE TO COMMENTS	N.M.P.	N.M.P.
14	01-29-2022	ISSUED RESPONSE TO COMMENTS	N.M.P.	N.M.P.
15	01-29-2022	ISSUED RESPONSE TO COMMENTS	N.M.P.	N.M.P.
16	01-29-2022	ISSUED RESPONSE TO COMMENTS	N.M.P.	N.M.P.
17	01-29-2022	ISSUED RESPONSE TO COMMENTS	N.M.P.	N.M.P.
18	01-29-2022	ISSUED RESPONSE TO COMMENTS	N.M.P.	N.M.P.
19	01-29-2022	ISSUED RESPONSE TO COMMENTS	N.M.P.	N.M.P.
20	01-29-2022	ISSUED RESPONSE TO COMMENTS	N.M.P.	N.M.P.
21	01-29-2022	ISSUED RESPONSE TO COMMENTS	N.M.P.	N.M.P.
22	01-29-2022	ISSUED RESPONSE TO COMMENTS	N.M.P.	N.M.P.
23	01-29-2022	ISSUED RESPONSE TO COMMENTS	N.M.P.	N.M.P.
24	01-29-2022	ISSUED RESPONSE TO COMMENTS	N.M.P.	N.M.P.
25	01-29-2022	ISSUED RESPONSE TO COMMENTS	N.M.P.	N.M.P.
26	01-29-2022	ISSUED RESPONSE TO COMMENTS	N.M.P.	N.M.P.
27	01-29-2022	ISSUED RESPONSE TO COMMENTS	N.M.P.	N.M.P.
28	01-29-2022	ISSUED RESPONSE TO COMMENTS	N.M.P.	N.M.P.
29	01-29-2022	ISSUED RESPONSE TO COMMENTS	N.M.P.	N.M.P.
30	01-29-2022	ISSUED RESPONSE TO COMMENTS	N.M.P.	N.M.P.
31	01-29-2022	ISSUED RESPONSE TO COMMENTS	N.M.P.	N.M.P.
32	01-29-2022	ISSUED RESPONSE TO COMMENTS	N.M.P.	N.M.P.
33	01-29-2022	ISSUED RESPONSE TO COMMENTS	N.M.P.	N.M.P.
34	01-29-2022	ISSUED RESPONSE TO COMMENTS	N.M.P.	N.M.P.
35	01-29-2022	ISSUED RESPONSE TO COMMENTS	N.M.P.	N.M.P.
36	01-29-2022	ISSUED RESPONSE TO COMMENTS	N.M.P.	N.M.P.
37	01-29-2022	ISSUED RESPONSE TO COMMENTS	N.M.P.	N.M.P.
38	01-29-2022	ISSUED RESPONSE TO COMMENTS	N.M.P.	N.M.P.
39	01-29-2022	ISSUED RESPONSE TO COMMENTS	N.M.P.	N.M.P.
40	01-29-2022	ISSUED RESPONSE TO COMMENTS	N.M.P.	N.M.P.
41	01-29-2022	ISSUED RESPONSE TO COMMENTS	N.M.P.	N.M.P.
42	01-29-2022	ISSUED RESPONSE TO COMMENTS	N.M.P.	N.M.P.
43	01-29-2022	ISSUED RESPONSE TO COMMENTS	N.M.P.	N.M.P.
44	01-29-2022	ISSUED RESPONSE TO COMMENTS	N.M.P.	N.M.P.
45	01-29-2022	ISSUED RESPONSE TO COMMENTS	N.M.P.	N.M.P.
46	01-29-2022	ISSUED RESPONSE TO COMMENTS	N.M.P.	N.M.P.
47	01-29-2022	ISSUED RESPONSE TO COMMENTS	N.M.P.	N.M.P.
48	01-29-2022	ISSUED RESPONSE TO COMMENTS	N.M.P.	N.M.P.
49	01-29-2022	ISSUED RESPONSE TO COMMENTS	N.M.P.	N.M.P.
50	01-29-2022	ISSUED RESPONSE TO COMMENTS	N.M.P.	N.M.P.
51	01-29-2022	ISSUED RESPONSE TO COMMENTS	N.M.P.	N.M.P.
52	01-29-2022	ISSUED RESPONSE TO COMMENTS	N.M.P.	N.M.P.
53	01-29-2022	ISSUED RESPONSE TO COMMENTS	N.M.P.	N.M.P.
54	01-29-2022	ISSUED RESPONSE TO COMMENTS	N.M.P.	N.M.P.
55	01-29-2022	ISSUED RESPONSE TO COMMENTS	N.M.P.	N.M.P.
56	01-29-2022	ISSUED RESPONSE TO COMMENTS	N.M.P.	N.M.P.
57	01-29-2022	ISSUED RESPONSE TO COMMENTS	N.M.P.	N.M.P.
58	01-29-2022	ISSUED RESPONSE TO COMMENTS	N.M.P.	N.M.P.
59	01-29-2022	ISSUED RESPONSE TO COMMENTS	N.M.P.	N.M.P.
60	01-29-2022	ISSUED RESPONSE TO COMMENTS	N.M.P.	N.M.P.
61	01-29-2022	ISSUED RESPONSE TO COMMENTS	N.M.P.	N.M.P.
62	01-29-2022	ISSUED RESPONSE TO COMMENTS	N.M.P.	N.M.P.
63	01-29-2022	ISSUED RESPONSE TO COMMENTS	N.M.P.	N.M.P.
64	01-29-2022	ISSUED RESPONSE TO COMMENTS	N.M.P.	N.M.P.
65	01-29-2022	ISSUED RESPONSE TO COMMENTS	N.M.P.	N.M.P.
66	01-29-2022	ISSUED RESPONSE TO COMMENTS	N.M.P.	N.M.P.
67	01-29-2022	ISSUED RESPONSE TO COMMENTS	N.M.P.	N.M.P.
68	01-29-2022	ISSUED RESPONSE TO COMMENTS	N.M.P.	N.M.P.
69	01-29-2022	ISSUED RESPONSE TO COMMENTS	N.M.P.	N.M.P.
70	01-29-2022	ISSUED RESPONSE TO COMMENTS	N.M.P.	N.M.P.
71	01-29-2022	ISSUED RESPONSE TO COMMENTS	N.M.P.	N.M.P.
72	01-29-2022	ISSUED RESPONSE TO COMMENTS	N.M.P.	N.M.P.
73	01-29-2022	ISSUED RESPONSE TO COMMENTS	N.M.P.	N.M.P.
74	01-29-2022	ISSUED RESPONSE TO COMMENTS	N.M.P.	N.M.P.
75	01-29-2022	ISSUED RESPONSE TO COMMENTS	N.M.P.	N.M.P.
76	01-29-2022	ISSUED RESPONSE TO COMMENTS	N.M.P.	N.M.P.
77	01-29-2022	ISSUED RESPONSE TO COMMENTS	N.M.P.	N.M.P.
78	01-29-2022	ISSUED RESPONSE TO COMMENTS	N.M.P.	N.M.P.
79	01-29-2022	ISSUED RESPONSE TO COMMENTS	N.M.P.	N.M.P.
80	01-29-2022	ISSUED RESPONSE TO COMMENTS	N.M.P.	N.M.P.
81	01-29-2022	ISSUED RESPONSE TO COMMENTS	N.M.P.	N.M.P.
82	01-29-2022	ISSUED RESPONSE TO COMMENTS	N.M.P.	N.M.P.
83	01-29-2022	ISSUED RESPONSE TO COMMENTS	N.M.P.	N.M.P.
84	01-29-2022	ISSUED RESPONSE TO COMMENTS	N.M.P.	N.M.P.
85	01-29-2022	ISSUED RESPONSE TO COMMENTS	N.M.P.	N.M.P.
86	01-29-2022	ISSUED RESPONSE TO COMMENTS	N.M.P.	N.M.P.
87	01-29-2022	ISSUED RESPONSE TO COMMENTS	N.M.P.	N.M.P.
88	01-29-2022	ISSUED RESPONSE TO COMMENTS	N.M.P.	N.M.P.
89	01-29-2022	ISSUED RESPONSE TO COMMENTS	N.M.P.	N.M.P.
90	01-29-2022	ISSUED RESPONSE TO COMMENTS	N.M.P.	N.M.P.
91	01-29-2022	ISSUED RESPONSE TO COMMENTS	N.M.P.	N.M.P.
92	01-29-2022	ISSUED RESPONSE TO COMMENTS	N.M.P.	N.M.P.
93	01-29-2022	ISSUED RESPONSE TO COMMENTS	N.M.P.	N.M.P.
94	01-29-2022	ISSUED RESPONSE TO COMMENTS	N.M.P.	N.M.P.
95	01-29-2022	ISSUED RESPONSE TO COMMENTS	N.M.P.	N.M.P.
96	01-29-2022	ISSUED RESPONSE TO COMMENTS	N.M.P.	N.M.P.
97	01-29-2022	ISSUED RESPONSE TO COMMENTS	N.M.P.	N.M.P.
98	01-29-2022	ISSUED RESPONSE TO COMMENTS	N.M.P.	N.M.P.
99	01-29-2022	ISSUED RESPONSE TO COMMENTS	N.M.P.	N.M.P.
100	01-29-2022	ISSUED RESPONSE TO COMMENTS	N.M.P.	N.M.P.

DiPrete Engineering
Two Stafford Court Cranston, RI 02920
tel. 401-943-1000 fax 401-464-6006 www.diprete-eng.com
BOSTON • PROVIDENCE • NEWPORT

Z:\DHAN\PROJECTS\2024-008 LIBERTY LANE STORAGE\AUTOCAD DRAWINGS\24-008-PL-AND-DWG-PL-UTTER: 12/22/2021



POND COMPLEX A2



DEPARTMENT OF ENVIRONMENTAL MANAGEMENT
OFFICE OF WATER RESOURCES
FRESHWATER WETLANDS PROGRAM
APPROVED WITH CONDITIONS
AS SPECIFIED IN THE LETTER OF APPROVAL
DATED JAN 11 2022 FILE # 21-0215
NO CHANGES ALLOWED WITHOUT PRIOR APPROVAL
APPROVED PLANS MUST BE AT CONSTRUCTION SITE

Walter J. Freeman

DESCRIPTION	IP-A
TOP OF POND ELEVATION	108.50
100 YEAR STORM ELEVATION	107.25
10 YEAR STORM ELEVATION	105.91
1 YEAR STORM ELEVATION	105.01
BOTTOM OF POND ELEVATION	105.00
SEASONAL HIGH GWT ELEVATION	101.00
SOIL EVALUATION	TH-7

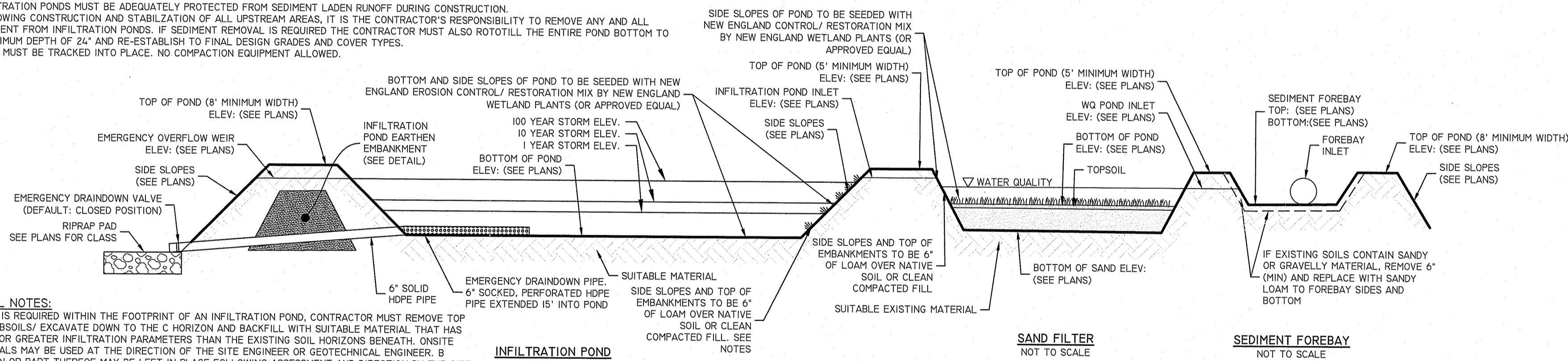
NOTES:

- LIMITS OF INFILTRATION POND MUST BE STAKED OUT AND MUST NOT BE USED AS A TEMPORARY SEDIMENT BASIN DURING CONSTRUCTION (NO CONSTRUCTION TRAFFIC ALLOWED WITHIN POND LIMITS).
- INFILTRATION PONDS MUST NOT BE USED FOR STOCKPILING, VEHICLE PARKING OR ANY OTHER ANCILLARY STORING OF OBJECTS OR MATERIALS, TEMPORARY OR PERMANENT, AT ANY TIME.
- INFILTRATION PONDS MUST BE ADEQUATELY PROTECTED FROM SEDIMENT LADEN RUNOFF DURING CONSTRUCTION.
- FOLLOWING CONSTRUCTION AND STABILIZATION OF ALL UPSTREAM AREAS, IT IS THE CONTRACTOR'S RESPONSIBILITY TO REMOVE ANY AND ALL SEDIMENT FROM INFILTRATION PONDS. IF SEDIMENT REMOVAL IS REQUIRED THE CONTRACTOR MUST ALSO ROTOTILL THE ENTIRE POND BOTTOM TO A MINIMUM DEPTH OF 24" AND RE-ESTABLISH TO FINAL DESIGN GRADES AND COVER TYPES.
- SOILS MUST BE TRACKED INTO PLACE. NO COMPACTION EQUIPMENT ALLOWED.

BOTTOM OF POND EXCAVATION MUST BE MONITORED/INSPECTED BY SITE ENGINEER OR GEOTECHNICAL ENGINEER. CONTRACTOR MUST PROVIDE ADEQUATE NOTICE FOR INSPECTION.

POND FILL NOTES:

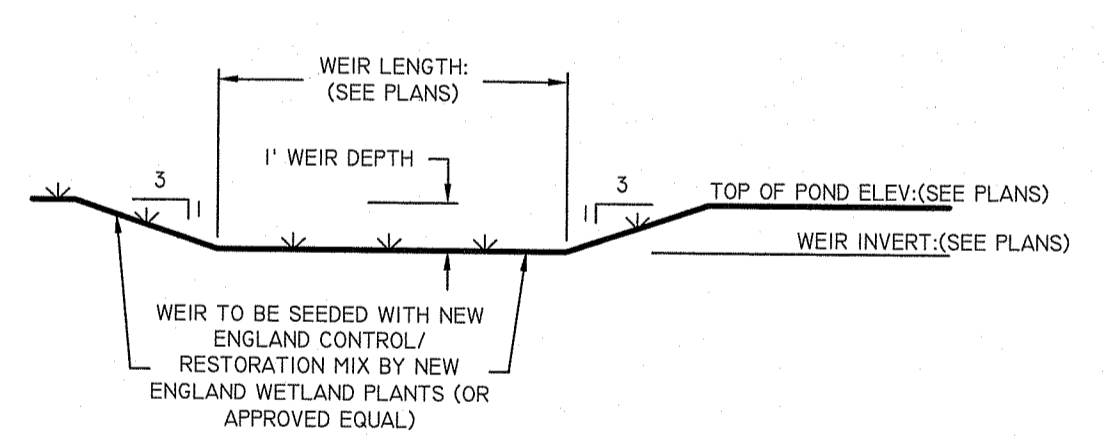
- IF FILL IS REQUIRED WITHIN THE FOOTPRINT OF AN INFILTRATION POND, CONTRACTOR MUST REMOVE TOP AND SUBSOILS/ EXCAVATE DOWN TO THE C HORIZON AND BACKFILL WITH SUITABLE MATERIAL THAT HAS EQUAL OR GREATER INFILTRATION PARAMETERS THAN THE EXISTING SOIL HORIZONS BENEATH. ON-SITE MATERIALS MAY BE USED AT THE DIRECTION OF THE SITE ENGINEER OR GEOTECHNICAL ENGINEER. B HORIZON OR PART THEREOF MAY BE LEFT IN PLACE FOLLOWING ASSESSMENT AND DIRECTION BY THE SITE ENGINEER OR GEOTECHNICAL ENGINEER.
- FILL OPERATIONS MUST BE MONITORED BY THE SITE ENGINEER OR GEOTECHNICAL ENGINEER. CONTRACTOR MUST PROVIDE ADEQUATE NOTICE PRIOR TO FILLING.



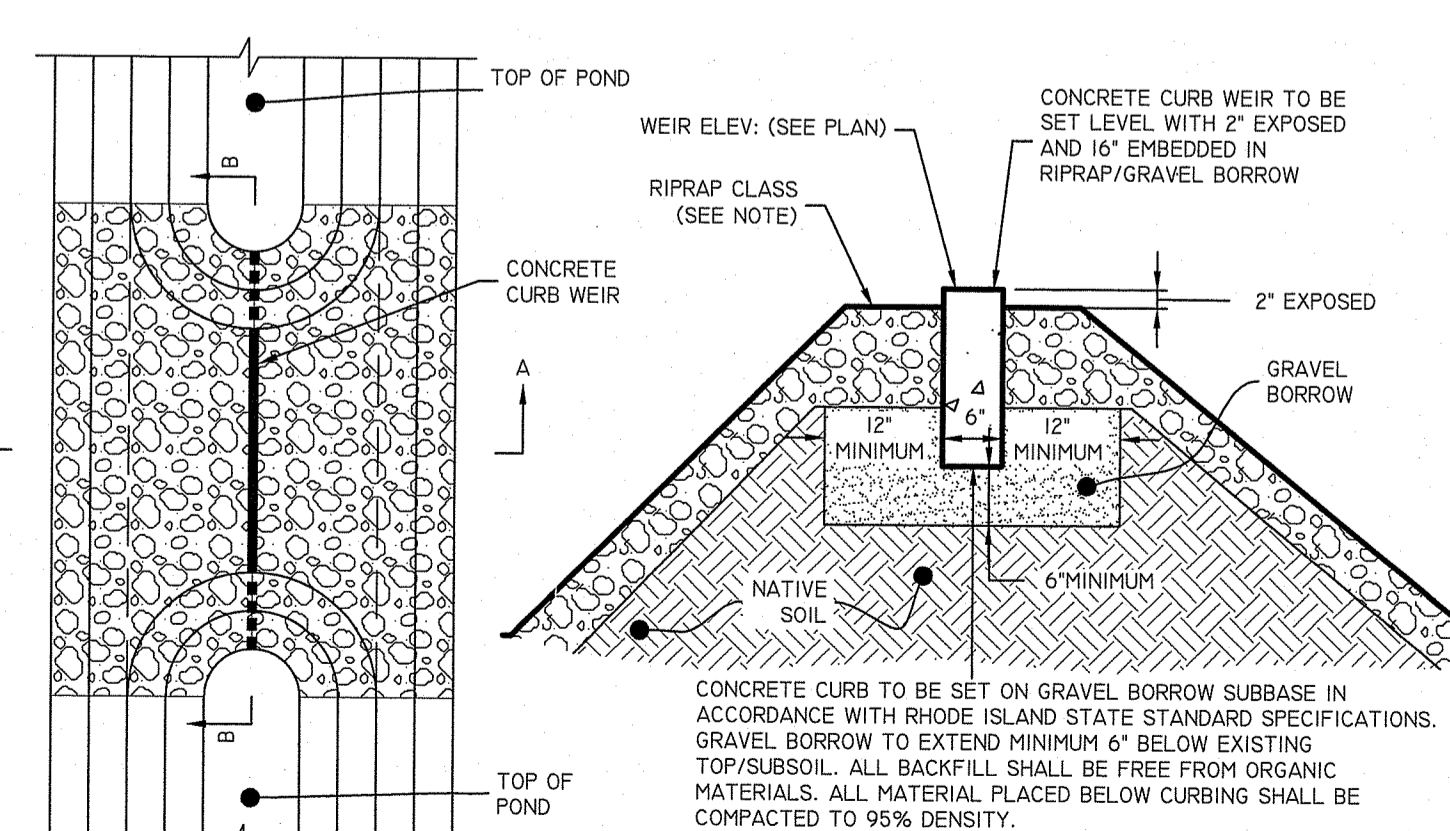
WQ INFILTRATION POND BMP SYSTEM
NOT TO SCALE

DESCRIPTION	SNDF-A2
TOP OF POND ELEVATION	108.50
100 YEAR STORM ELEVATION	107.25
10 YEAR STORM ELEVATION	105.95
1 YEAR STORM ELEVATION	105.85
WQ STORM ELEVATION	105.18
BOTTOM OF POND ELEVATION	104.00
TOP SOIL DEPTH	0.5'
SAND DEPTH	1.5'
BOTTOM OF SAND ELEVATION	102.00
SEASONAL HIGH GWT ELEVATION	101.00
SOIL EVALUATION	TH-7

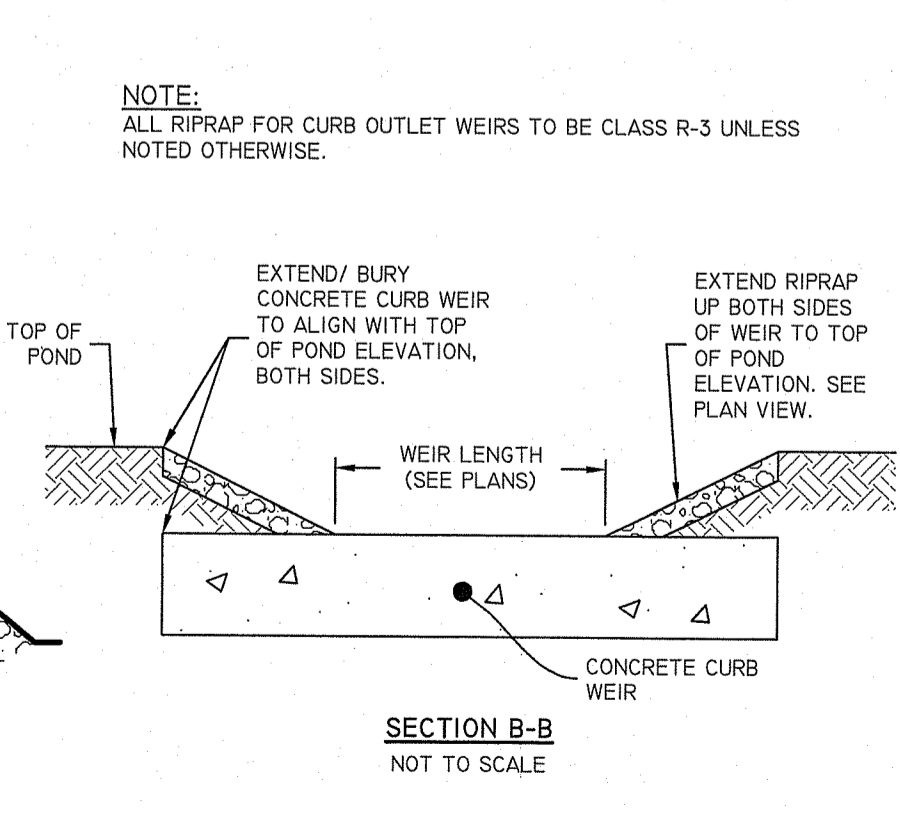
NOTE:
LIMITS OF INFILTRATION POND TO BE STAKED OUT AND NOT USED AS A TEMPORARY SEDIMENT BASIN DURING CONSTRUCTION (NO CONSTRUCTION TRAFFIC ALLOWED WITHIN FILTER LIMITS)



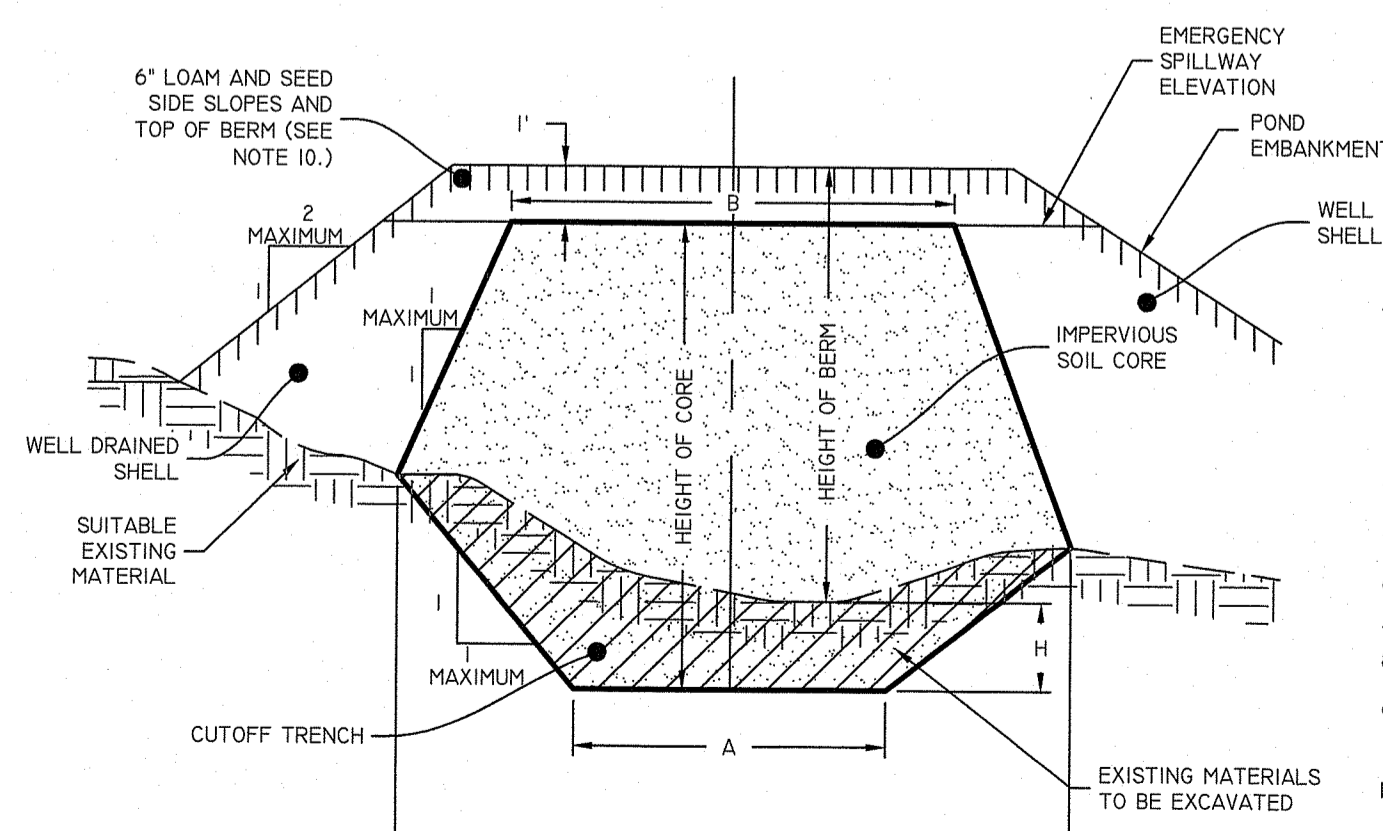
EMERGENCY OVERFLOW WEIR
NOT TO SCALE



CURB OUTLET WEIR
NOT TO SCALE



SECTION B-B
NOT TO SCALE



POND EARTHEN EMBANKMENT
NOT TO SCALE

BERM HEIGHT (FT)	TOP WIDTH OF CORE - B (FT)
0-6.5	8.2
6.6-9.8	9.2
9.9-15.1	9.8
15.2-16.4	10.8
16.5-19.7	11.5

- NOTES:
- IMPERVIOUS SOIL CORE TO BE PROVIDED FOR ALL POND EMBANKMENTS.
 - IMPERVIOUS SOIL CORE TO BE CONSTRUCTED OF A MATERIAL WITH A MINIMUM OF 55% PASSING THE #200 SIEVE AND A MAXIMUM PERMEABILITY OF 0.00005 CM/S.
 - WELL DRAINED SHELL TO BE CONSTRUCTED OF GRAVEL AND/OR SAND WITH LESS THAN 5% PASSING THE #200 SIEVE.
 - MINIMUM DEPTH OF CUTOFF TRENCH (H) SHALL BE 3/4 OF THE TOTAL BERM HEIGHT.
 - THE IMPERVIOUS CORE AT A MINIMUM SHALL EXTEND UP BOTH ABUTMENTS TO THE EMERGENCY SPILLWAY ELEVATION.
 - THE MINIMUM BOTTOM WIDTH (A) SHALL BE 5'-8", AND WIDE ENOUGH TO PERMIT OPERATION OF COMPACTION EQUIPMENT.
 - SIDE SLOPES OF THE TRENCH SHALL BE NO STEEPER THAN 1:1.
 - IF BEDROCK IS ENCOUNTERED BELOW THE DAM THE CUT OFF TRENCH CAN BE REDUCED TO 1:1 (A:H).
 - COMPACTION REQUIREMENTS FOR THE SHELL AND IMPERVIOUS CORE TO BE 95% OF THE MODIFIED PROCTOR PER ASTM D1557. ALL FILL TO BE PLACED IN LIFTS NOT EXCEEDING 12".
 - SIDE SLOPE OF POND EMBANKMENT TO BE 2:1 MAXIMUM. IF SIDE SLOPES ARE STEEPER THAN 3:1, SLOPE PROTECTION MUST BE UTILIZED ON POND EMBANKMENT. THIS INCLUDES, BUT NOT LIMITED TO, RIPRAP AND EROSION CONTROL MATS.
 - THE IMPERVIOUS CORE SHALL BE KEPT FREE FROM STANDING WATER DURING THE BACKFILL OPERATION.
 - ALL EMBANKMENT INSTALLATIONS TO BE SUPERVISED BY A GEOTECHNICAL ENGINEER.
 - ANY PROPOSED DEVIATIONS FROM THIS DETAIL MUST BE DESIGNED BY A GEOTECHNICAL ENGINEER AND SUBMITTED TO THE SITE ENGINEER (AND AHJ WHERE REQUIRED) FOR REVIEW PRIOR TO CONSTRUCTION.

RI Environmental Management
JAN 6 2022
Office of Water Resources

NO.	DATE	DESCRIPTION	DESIGNED BY	DRAWN BY	IN CHARGE
1	12-21-2021	PRELIMINARY RESPONSE TO COMMENTS			
2	12-21-2021	REVISIONS TO COMMENTS			
3	8-02-2022	REVISIONS TO COMMENTS			



Stormcrete® Modular Precast Porous Concrete Stormwater System

Handling and Installation Manual



1. Recommended Equipment

In addition to the typical stormwatering, materials handling and grading equipment, the following hand tools should also be available:

- 2 or 4-way chains, cables or straps rated to lift the slabs – refer to Table 2 for the number of lifting points and the slab weights
- Condition impact wrench or ratchet wrench with 3/4" socket for installing and removing lifting swivel bolts
- Lifting swivels supplied by manufacturer
- Rakes and shovels for leveling screed stone
- 1.25" minimum diameter screed rails
- 2"x4" or other material to use as a screed
- Plastic plugs and slab spacers supplied by manufacturer.
- Backpack blower to keep slabs surface clean during and after installation.
- Diamond Bladed Masonry Cutoff Saw (6" cutting depth min. – typically requires a minimum 16" diameter blade – check saw specifications).

2. Offloading and Storage

- Prior to offloading a delivery truck the slabs on the truck shall be carefully inspected for any damage. Any observed damage shall be immediately reported to the delivery driver and the quantity and type of damage shall be noted on the delivery ticket.
- Offloading should be performed by a trained and experienced equipment operator. Due to the structural properties of porous concrete, extra care should be taken when handling the slabs.
- A forklift or similar equipment should be used when offloading Stormcrete® slabs. It is recommended that the equipment be fitted with forks. Chains, cables or slings should never be wrapped around slabs for offloading or installation.
- Slabs should be offloaded evenly from both sides of the truck to ensure that the trailer does not become unstable.
- Slabs delivered on pallets should be offloaded as shipped. Slabs delivered on damage must be picked from the highest level of damage. Never pick up slabs with more than one layer of damage. (Please see Table 1 for Stormcrete® slab sizes, shipping configurations and corresponding weights).

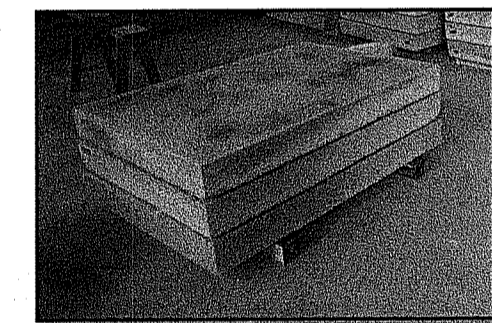
Slab Size	Number of slabs per pallet/coverage	Number of slabs per stack	Approx. Slab Weight (lbs.)	Approx. Lift Weight (lbs.)
5' x 4' x 6"	9	9	109	309
5' x 2' x 6"	4	4	64	164
4' x 2.5' x 6"	4	4	64	164

Table 1

- Stored slabs must be placed on a level or nearly level stable surface. In dusty environments slabs should be covered to prevent dust and debris from settling on slab surfaces.

- Allow approximately 1 ft of storage area for every 1 sq ft of Stormcrete® Slabs purchased.

- When stacking or restacking slabs 4" by 4" timbers should be placed parallel to one another and located directly beneath imbedded lifting points. Do not place timbers in the middle of the slabs or on the ends. Timbers should be at a minimum 1" thicker than the fork thickness. Place timbers between each double stack of slabs (see image below).
- Lower slabs evenly such that the slab comes into contact with both timbers simultaneously. To prevent edge damage, slabs should be set flat on timbers so that one edge does not contact timbers while opposite edge is supported by forks.



3. Sub-Base Preparation

Reservoir Layer Placement:

Reservoir layer shall not be placed and/or compact in rain or snow, or on saturated or frozen subgrade.

In all cases reservoir stone shall be placed and compacted against rigid lateral boundaries, i.e., in situ, undisturbed native soils, fill materials compacted to 98% Standard Proctor density or concrete curb and leaders. Compaction of reservoir stone against any flexible boundaries shall not be permitted.

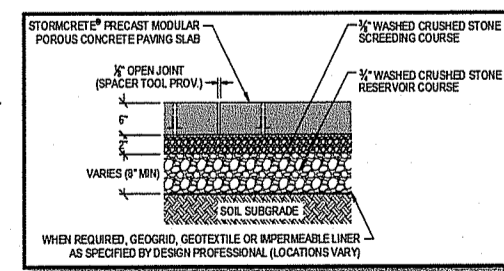
Although the approved plans shall govern over installation details and specifications, the following instructions are provided by the manufacturer as minimum guidelines:

- Reservoir stone layer shall be constructed per approved drawings using 3/4" or AASHTO No. 57 crushed angular stone. The stone must be washed and free of fines.

- Compact reservoir storage layer in maximum 12" lifts, with a minimum of two complete coverages, one pass each in mutually perpendicular directions, with a 3 to 5 ton smooth, single or double drum roller operated in vibratory mode. Following vibratory compaction, repeat two complete coverage's, one pass each in mutually perpendicular directions, with the roller operated in static mode. Continue static rolling until there is no visible movement, weaving or deflection in the surface of the storage reservoir layer.

- For small areas inaccessible by large rollers follow the above directions using a walk-behind plate compactor. Repeat two complete coverages in each direction.
- The surface tolerance of the compacted storage reservoir layer shall be +/- 3/4" in under a 10 ft. straightedge.

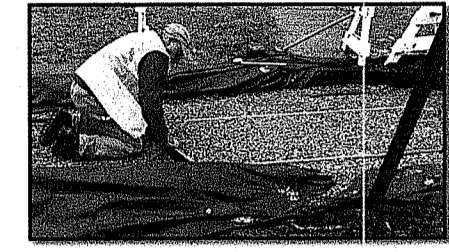
- Where specified on the design plans, place geotextile over prepared subgrade side slopes and extend a maximum of 1' foot under the bottom of the storage reservoir. Do not place geotextile under other areas of infiltrating system unless specified on the approved plans. Secure in place to prevent disturbance from vehicles and/or worker foot traffic.



Screeding Layer Placement

It is critical that the crushed stone leveling course surface be SCREEDED flat so that the slabs are fully supported with no bridging or rounding beneath. Crushed stone base shall not be placed and/or screeded in rain or snow, or on saturated or frozen subbase.

- Screeding layer shall be placed per approved drawings using 3/8" crushed angular stone or No. 8 Stone. The stone must be washed and free of fines.
- Place and spread the stone evenly over the reservoir course to a thickness of 4"-2". Level the surface of crushed stone (screeding is strongly recommended).



- Screed using a minimum 1.25" diameter rigid screed rail placed adjacent or below the slab location with the top of the rails set at the screeding level.

- Do not compact or disturb leveled screeding layer (if screed rails are placed in panel locations, carefully remove them to prevent disturbance to the leveling base layer).

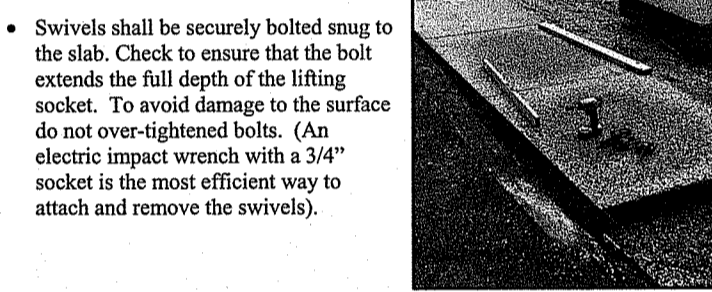
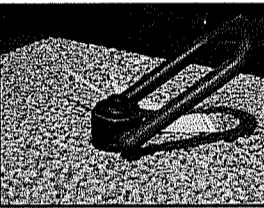
- The uniformity of the leveling (base) layer determines the differential settlement between precast porous concrete paving slabs.

- The slab installation contractor should not correct deficiencies in the leveling layer by shimming with additional stone rather the slabs should be lifted out and the entire area should be re-leveled.

4. Setting Stormcrete® Porous Concrete Slabs

Recommended Lifting Hardware

- Slabs shall only be lifted and placed using supplied hoist ring swivels, 2 or 4-way chains, wire rope or nylon straps rated for the lift weight shall be used per the manufacturer's recommendations to lift slabs – do not exceed minimum recommended angle for lifting chains.



Individual slabs should only be lifted by equipment that is rated for the slab weights shown in the adjacent table:

Slab Dimension (ft)	Max Slab Weight (lbs.)	Lifting Points
5' x 4' x 6"	1290	4
5' x 2' x 6"	645	2
4' x 2.5' x 6"	645	2

Chains, cables or slings should never be wrapped around slabs for placement under any circumstances.

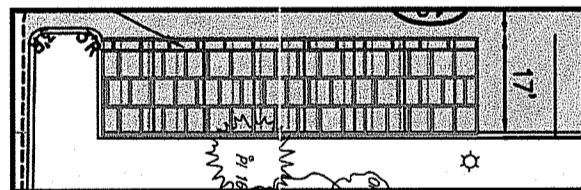
Placing Slabs

Precast porous concrete slabs shall not be placed in heavy rain or snow, or on saturated or frozen base.

Because the units are precast in a controlled environment, they are delivered to the site pre-cured which allows them to be parked or driven on immediately after placement. They may also be placed year-round, in almost any type of weather or temperature conditions.

WARNING - ENSURE THAT PLASTIC SPACER THAT ARE USED TO SEPARATE SLABS IN A STACK ARE REMOVED FROM THE BOTTOM OF ALL SLABS BEFORE SLAB PLACEMENT.

- Whenever possible place slabs in a staggered pattern(s) as shown below or as depicted on approved drawings.



- On gutter applications a string line shall be used to ensure that the curbing is straight enough to allow for proper placement of the slabs. If the existing curbing does not follow a straight alignment then the slabs should follow the alignment of a string line placed mostly parallel to the curb and 1/2" away from the point that is furthest toward the roadway to allow for a minimum 1/2" joint.

- Guide units into place by hand, being careful not to pinch fingers. Horizontal adjustments can be made with wood wedges, levers, and rubber mallets as needed (If pry bars are used they should never come into direct contact with the top corner of the slab).

- Adjacent slabs shall be separated from each other by the placement of two 3/8" thick High-Density Polyethylene spacers (Part No. 18SP) supplied by the manufacturer. Spacer shall be trimmed to the right height to fit and adhered to previously placed slab with a construction adhesive such as Liquid Nails Heavy Duty Construction Adhesive or approved equal.

- Care should be taken to place adjacent slabs at same elevation (i.e. level to each other). Slab surfaces shall not deviate by more than 1/8" vertically and horizontally from one to the next.

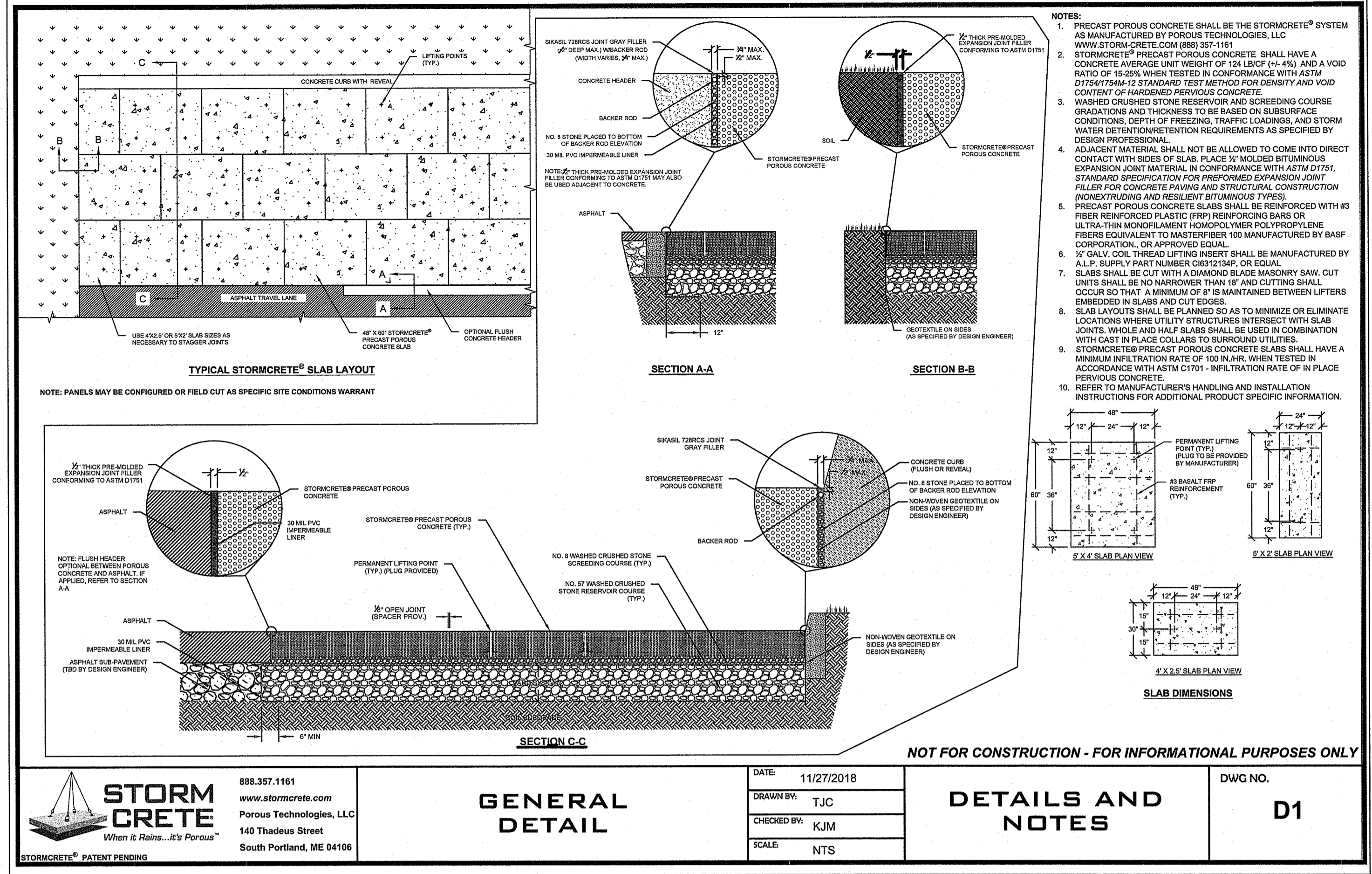
- Placed Slabs should maintain consistent 1/8" joint widths and horizontal and vertical alignments should be continuously straightened as necessary as paving proceeds.

- Joints between adjacent rows of panels shall be staggered when possible.

- Keep slabs covered until all adjacent areas are stabilized to prevent dust and debris from reducing porosity of slabs. A backpack blower should be employed throughout the installation process to keep slab surfaces clean. Place erosion and sediment control barriers to prevent eroding areas from draining onto slabs.

- Whenever possible set slabs with equipment positioned next to slab area and not on previously installed slabs. When it is necessary to position equipment on slabs during setting use only light machines equipped with either rubber tires or rubber tracks.

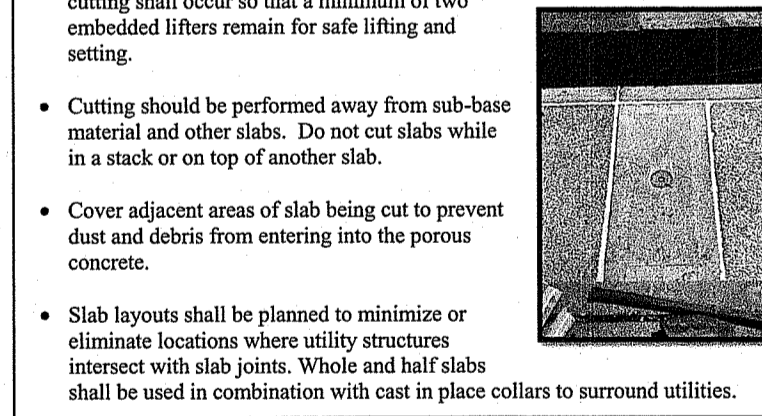
	TREATMENT SYSTEM
TOP OF STORMCRETE	105.50
TOP OF LEVELING COURSE	105.00
TOP OF STONE	104.83
BOTTOM OF STONE	104.16
WG STORM ELEVATION	104.27
SEASONAL HIGH GWT ELEVATION	101.00
SOIL EVALUATION	TH-5



- Immediately after the Stormcrete® system has been placed, use provided 1/2" nylon caps (Part No. 12NC) to fill imbedded lifting points. Care should be taken to make sure the plastic caps are flush with the surface; do not press caps down into the imbedded lifting points.
- Keep equipment off unrestrained paving slabs and subgrade material.
- Report any damage immediately to the project design professional.

Cutting

- When required, cut slabs with a diamond bladed masonry saw with a plunge depth of 6" minimum.
- If field adjustments are required, slabs should be cut as indicated on the approved drawings.
- Cutting should be performed away from sub-base material and other slabs. Do not cut slabs while in a stack or on top of another slab.
- Cover adjacent areas of slab being cut to prevent dust and debris from entering into the porous concrete.
- Slab layouts shall be planned to minimize or eliminate locations where utility structures intersect with slab joints. Whole and half slabs shall be used in combination with cast in place collars to surround utilities.

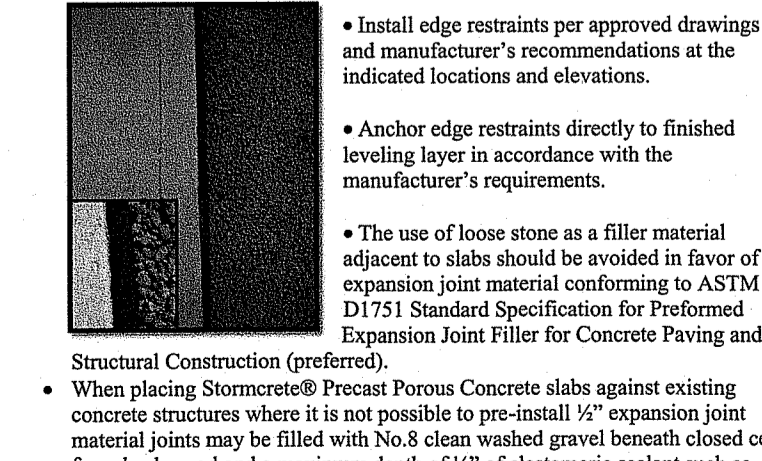


Grade Breaks

- Stormcrete® slabs should be placed on a level sub-base. If grade breaks are present, ensure that they occur at an open joint.
- If a grade break does not occur at an open joint cut the slab to create an open joint at the break. Cutting is required reference the cutting section above.

Edge Restraints

- NEVER place fluid material (asphalt, concrete, soil, etc.) directly up against the Stormcrete® slabs. Fluid materials shall be separated from Stormcrete® slabs by the use of a 1/2" preformed expansion joint material conforming to ASTM D1751 Standard Specification for Preformed Expansion Joint Filler for Concrete Paving and Structural Construction
- Install edge restraints per approved drawings and manufacturer's recommendations at the indicated locations and elevations.
- Anchor edge restraints directly to finished leveling layer in accordance with the manufacturer's requirements.
- The use of loose stone as a filter material adjacent to slabs should be avoided in favor of expansion joint material conforming to ASTM D1751 Standard Specification for Preformed Expansion Joint Filler for Concrete Paving and Structural Construction (preferred).
- When placing Stormcrete® Precast Porous Concrete slabs against existing concrete structures where it is not possible to pre-install 1/2" expansion joint material joints may be filled with No. 8 clean washed gravel beneath closed cell foam backer rod and a maximum depth of 1/2" of elastomeric sealant such as



Sika® 728 RCS Limestone joint filler or approved equal. In all cases the use of a preformed expansion joint material conforming to ASTM D1751 Standard Specification for Preformed Expansion Joint Filler for Concrete Paving and Structural Construction is preferred.

5. SLAB PROTECTION & FINAL INSPECTION

After work in the section is complete, the contractor shall be responsible for protecting the precast porous paving slab system from damage and/or contamination from mud, dirt, grass clippings and accumulation of foliage and debris through the duration of construction. This should include a regular vacuum sweeping schedule. It is important that you do not attempt to wash the construction area clean. This will result in lost debris draining into the slabstone.

- Any slabs cracked or damaged during installation shall be replaced with new ones at the installers cost.
- Reset slabs not in conformance with specified installation tolerances.
- Check for and remove any accumulation of sediment or debris observed. This can be done by manually sweeping, vacuum sweepers, and in some cases, back pack blowers.



- Check final surface elevations of set slabs for conformance to design drawings. Slab surfaces shall not deviate by more than 1/8" vertically from one to the next and to adjacent surfaces.
- The surface elevation of set slabs shall be flush with manholes or the top of utility structures.

6. STORMCRETE® PRECAST POROUS CONCRETE INSTALLATION TRAINING PROGRAM

- Installation contractors are strongly encouraged to participate in the Stormcrete® Precast Porous Concrete Installation Training Program. This program ensures that installers are properly trained in the installation of Stormcrete® products. Installers successfully completing the Training Program shall receive a certificate valid for 2 years and shall be responsible for reviewing the Handling and Installation Manual and Training Program Test Questions (with correct answers) with Laborers under their employ.

RI Environmental Management
 JAN 6 2022
 Office of Water Resources

Diprete Engineering
 Two Stafford Court, Cranston, RI 02920
 Tel: 401-943-1000 Fax: 401-464-6006 www.diprete-eng.com

Boston Providence Newport

DANA R. NISSET
 No. 11878
 REGISTERED PROFESSIONAL ENGINEER
 CIVIL

THIS PLAN SET MUST NOT BE USED FOR CONSTRUCTION PURPOSES UNLESS IT IS STAMPED BY A REGISTERED PROFESSIONAL ENGINEER OR ARCHITECT.

DIPRETE ENGINEERING ONLY WARRANTS PLANS OR A DIPRETE PROFESSIONAL ENGINEER OR ARCHITECT HAS PREPARED. DIPRETE ENGINEERING DOES NOT WARRANT PLANS BY ANY OTHER PARTY. NETWORK SAFETY PRECAUTIONS AND REQUIREMENTS, AND OSHA REGULATIONS SHALL BE THE RESPONSIBILITY OF THE USER. DESIGN BY: N.M.P.

NO.	DATE	DESCRIPTION	BY:
1	11-27-2018	DESIGN RESPONSE TO COMMENTS	N.M.P.
2	12-27-2018	DESIGN RESPONSE TO COMMENTS	N.M.P.
3	12-27-2018	DESIGN RESPONSE TO COMMENTS	N.M.P.
4	12-27-2018	DESIGN RESPONSE TO COMMENTS	N.M.P.

STORMCRETE DETAILS
 551 LIBERTY LANE
 ASSESSORS' PLAT 21-3, LOT 21
 SOUTH KINGSTOWN, RHODE ISLAND

DEPARTMENT OF ENVIRONMENTAL MANAGEMENT
 OFFICE OF WATER RESOURCES
 FRESHWATER WETLANDS PROGRAM
 APPROVED WITH CONDITIONS
 AS SPECIFIED IN THE LETTER OF APPROVAL
 DATED JAN 11 2022 FILE # 21-0215
 NO CHANGES ALLOWED WITHOUT PRIOR APPROVAL!
 APPROVED PLANS MUST BE AT CONSTRUCTION SITE

PREPARED FOR:
 SOUTH COUNTY POST & BEAM, INC.
 521 LIBERTY LANE, WEST KINGSTON, RHODE ISLAND
 TEL: 401-785-4416 FAX: 401-783-4494

DESIGN BY: N.M.P.

