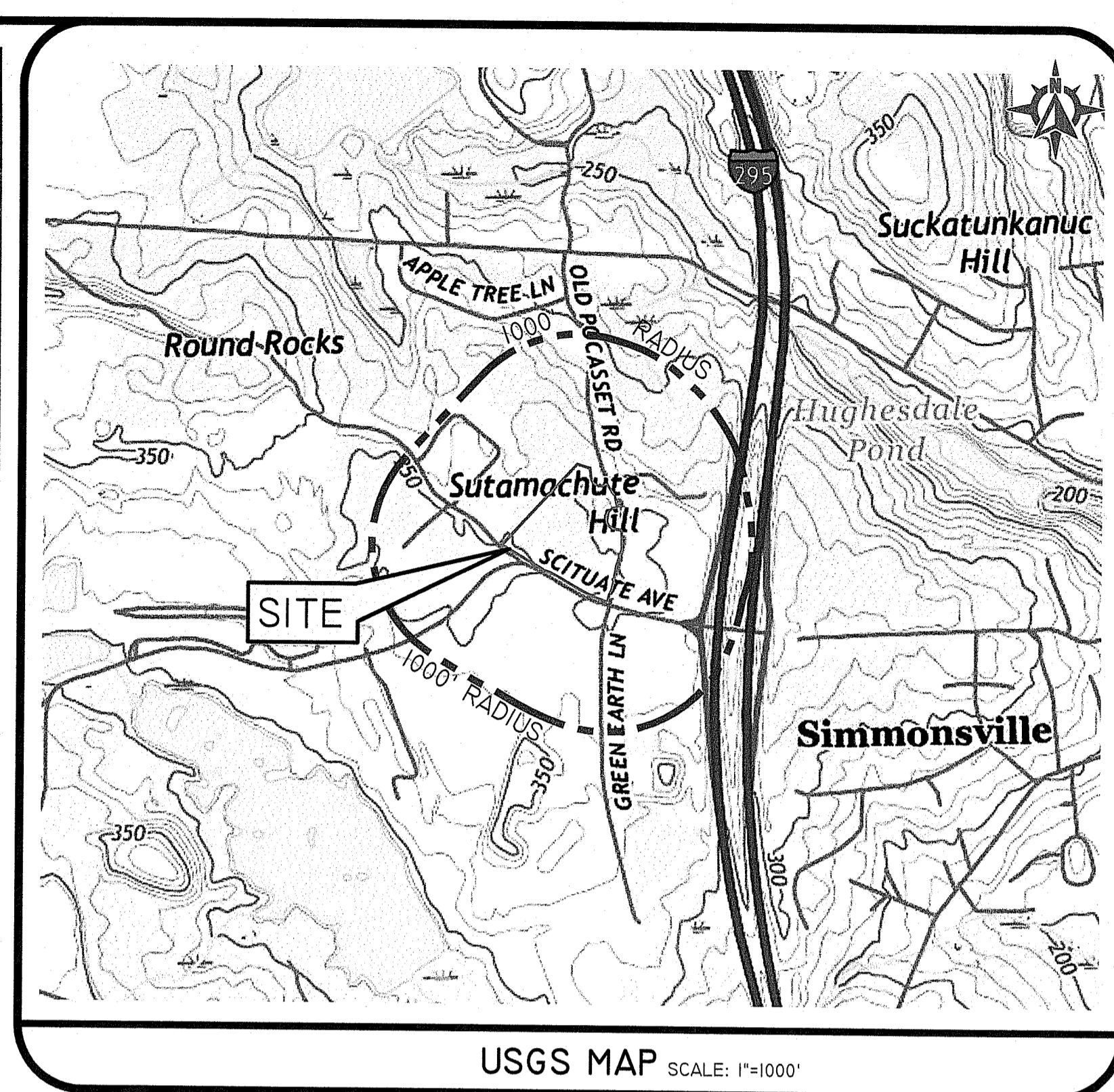
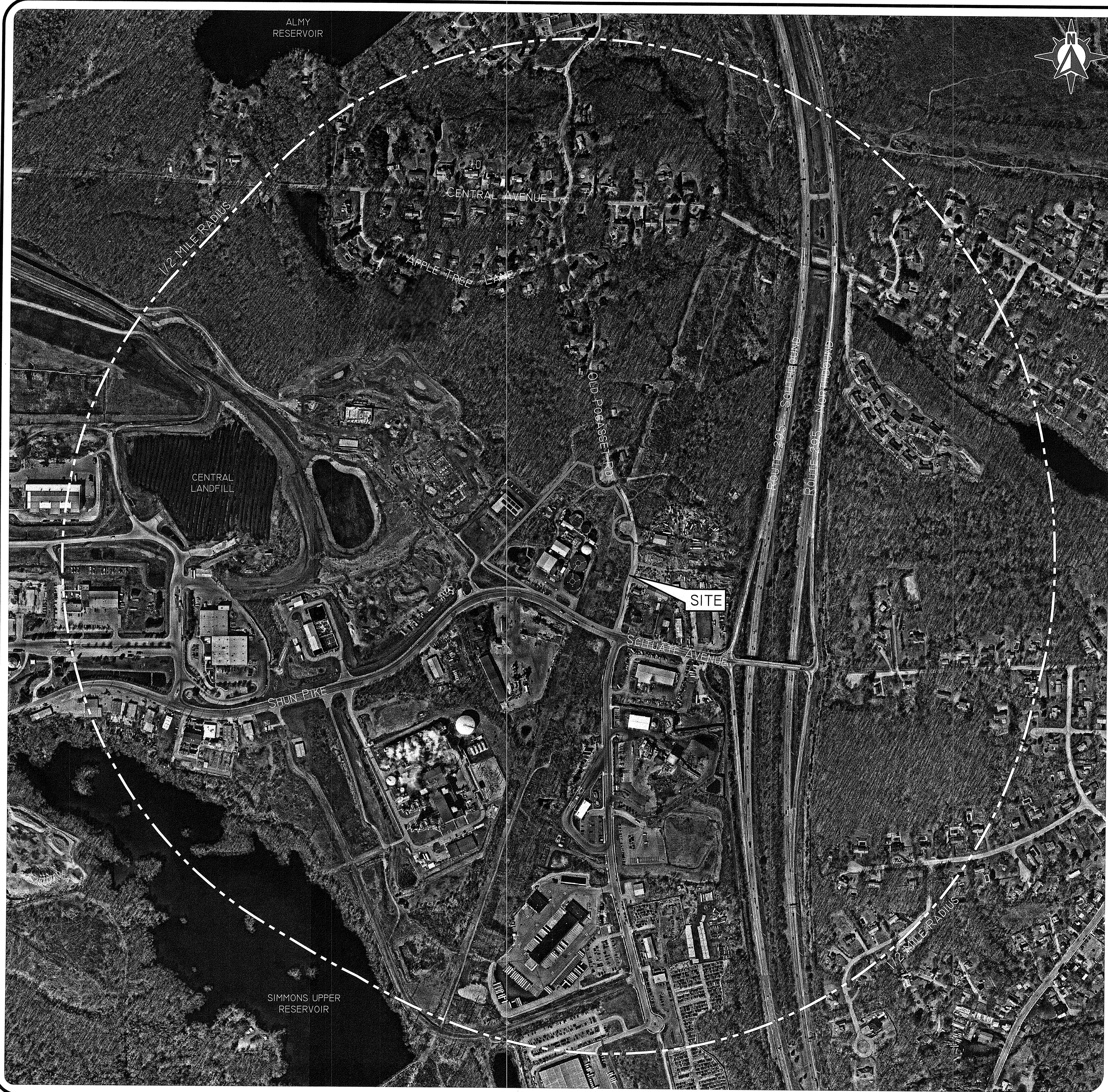


Z:\DIPRETE\PROJECTS\30384-002 BLUESPHERE BIGDAS PROJECT\AUTOCAD DRAWINGS\30384-002-CVAR.DWG PLOTTER: 8/12/2021



USGS MAP SCALE: 1"=1000'

RI Environmental Management
AUG 25 2021
Office of Water Resources

DEPARTMENT OF ENVIRONMENTAL MANAGEMENT
OFFICE OF WATER RESOURCES
FRESHWATER WETLANDS PROGRAM
APPROVED WITH CONDITIONS
AS SPECIFIED IN THE LETTER OF APPROVAL
DATED OCT 07 2021 FILE # 21-0234
NO CHANGES ALLOWED WITHOUT PRIOR APPROVAL
APPROVED PLANS MUST BE AT CONSTRUCTION SITE!
Nancy L. Freeman

PHOTO OBTAINED FROM NEARMAP.COM
DATE OF PHOTOGRAPHY 03/19/2021
SCALE: 1"=300'
0 150' 300' 600'

Diprete Engineering
Two Stafford Court Cranston, RI 02920
Tel: 401-943-1000 Fax: 401-464-6006 www.diprete-eng.com
Boston • Providence • Newport

JASON P. CLOUGH
No. [Signature]
REGISTERED PROFESSIONAL ENGINEER
CIVIL

USE OF ANY SET WORK OR ANY OTHER INSTRUMENTS OR SERVICES UNLESS STAMPED FOR CONSTRUCTION AND STAMPED BY REGISTERED PROFESSIONAL ENGINEER OF DIPRETE ENGINEERING. DIPRETE ENGINEERING ONLY WARRANTS PLANS ON A DIPRETE ENGINEERING TITLE BLOCK STAMPED BY REGISTERED PROFESSIONAL ENGINEER. DIPRETE ENGINEERING DOES NOT WARRANT PLANS BY ANY OTHER PARTY. THE CONTRACTOR IS RESPONSIBLE FOR ALL OF THE MEANS, METHODS, MATERIALS, AND CONFORMANCE IN THE IMPLEMENTATION OF THIS PLAN AND DESIGN. ONLY DIPRETE ENGINEERING ASSUMES ANY RESPONSIBILITY FOR DAMAGES INCURRED DUE TO LOCATIONS OF EXISTING UTILITIES. SCALE: 1"=300' (SEE SHEET 2)

NO.	DATE	DESCRIPTION	DESIGN BY:
0	8/12/2021	PROJECT SUBMISSION	JPC
			SDM

AERIAL & HALF MILE RADIUS
RHODE ISLAND BIOENERGY FACILITY
ASSESSOR'S PLAT 43-7 LOT 2
JOHNSTON, RHODE ISLAND
PREPARED FOR
SHELBY REALTY, INC. C/O ALEXANDER MACFARLANE
289 SCITUATE AVENUE JOHNSTON, RI 02919
TEL 646 236-3639
SHEET 2 OF 9

DE: 408 NO. 03M-002 COPYRIGHT 2008 BY DIPRETE ENGINEERING ASSOCIATES, INC.

GENERAL NOTES:

- 1. THE SITE IS LOCATED ON THE TOWN OF JOHNSTON'S ASSESSOR'S PLAT 43-7 LOT 2.
2. THE SITE IS APPROXIMATELY 12.34 ACRES AND IS ZONED R40.
3. THE OWNER OF AP 43-7 LOT 2 IS:
SHELBY REALTY, INC.
24 ARMAND WAY
HOPE, RI 02851
4. THIS SITE IS LOCATED IN FEMA FLOOD ZONE X. REFERENCE FEMA FLOOD INSURANCE RATE MAP 44007C0292M, MAP REVISED OCTOBER 2, 2015. (FLOOD PLAIN DESCRIPTIONS SHOWN BELOW).
5. THE BOUNDARY LINES AS SHOWN ON THE ENGINEERING PLAN SET DEPICTS THE RESULTS OF A CLASS I BOUNDARY RETRACEMENT SURVEY AS PERFORMED BY DIPRETE ENGINEERING ASSOCIATES, INC. THIS PLAN IS NOT TO BE CONSTRUED AS A CLASS I BOUNDARY RETRACEMENT SURVEY PLAN AND IS NOT SUITABLE FOR RECORDING AS A CLASS I STANDARD SURVEY PLAN.
6. CONTOUR DATA SHOWN ON THIS PLAN CONFORMS TO THE SURVEY STANDARDS AS NOTED ON THE BOUNDARY/TOPOGRAPHIC SURVEY (SHEET 4 OF THIS PLAN SET), EXCEPT FOR THE TOPOGRAPHY IN THE INTERIOR OF THE SITE CALLED OUT AS "APPROXIMATE TOPOGRAPHY" ON THE SOIL EROSION & SEDIMENT CONTROL PLAN (SHEET 5 OF THIS PLAN SET). THIS APPROXIMATE TOPOGRAPHY WAS TAKEN FROM THE ORIGINAL PROPOSED GRADING, AND IS NOT FROM AN AS-BUILT SURVEY.
7. ALL WORK PERFORMED HEREIN IS TO BE GOVERNED BY CURRENT EDITIONS OF THE RHODE ISLAND STANDARD SPECIFICATIONS FOR ROAD AND BRIDGE CONSTRUCTION, TOWN OF JOHNSTON STANDARD SPECIFICATIONS AND DETAILS AND SPECIFICATIONS INCLUDED AS PART OF THE DRAWINGS. IN AREAS OF CONFLICT BETWEEN THE DIFFERENT SPECIFICATIONS, THE DESIGN PLANS AND PROJECT SPECIFICATIONS WILL TAKE PRECEDENCE OVER THE GENERAL SPECIFICATIONS AND THE DESIGN ENGINEER WILL INTERPRET THE CONSTRUCTION REQUIREMENT. THE CONTRACTOR IS ADVISED TO SUBMIT A REQUEST FOR INFORMATION (RFI) FOR ANY AREAS OF CONFLICT BEFORE COMMITTING TO CONSTRUCTION.
8. THE SITE IS NOT WITHIN A:
GROUNDWATER PROTECTION AREA (RIDEM)
NATURAL HERITAGE AREA (RIDEM)
NARROW RIVER SPECIAL AREA MANAGEMENT PLAN (SRMC)
SALT PONDS SPECIAL AREA MANAGEMENT PLAN (SRMC)
GROUNDWATER PROTECTION OVERLAY DISTRICT (TOWM)
9. THE FOLLOWING DOCUMENTS ARE CONSIDERED PART OF THE PROJECT PLANS AND THE CONTRACTOR/OWNER MUST MAINTAIN THESE DOCUMENTS AS PART OF A FULL PLAN SET:
SOIL EROSION AND SEDIMENT CONTROL PLAN (SECC). THE SECC CONTAINS THE FOLLOWING:
EROSION CONTROL MEASURES
SHORT TERM MAINTENANCE
ESTABLISHMENT OF VEGETATIVE COVER
CONSTRUCTION POLLUTION PREVENTION
SEQUENCE OF CONSTRUCTION
STORMWATER OPERATION AND MAINTENANCE PLAN (O&M). THE O&M CONTAINS:
LONG TERM MAINTENANCE
LONG TERM POLLUTION PREVENTION
10. THIS PLAN SET REFERENCES RIDOT STANDARD DETAILS (DESIGNATED AS RIDOT STD X.X.X). RIDOT STANDARD DETAILS ARE AVAILABLE FROM RIDOT AND ONLINE AT:
HTTP://WWW.RIDOT.RI.GOV/BUSINESS/CONTRACTORS/CONSULTANTS.PHP
11. THE SITE IS CURRENTLY SERVICED BY PUBLIC WATER AND PUBLIC SEWER.
12. THE DRAINAGE SYSTEM IS DESIGNED TO MEET THE TOWN OF JOHNSTON'S SUBDIVISION AND LAND DEVELOPMENT REGULATIONS WITH THE USE OF CATCH BASINS, CULVERTS, AND DRAINAGE BASINS. THE STORMWATER MANAGEMENT SYSTEM MEETS THE RIDEM BEST MANAGEMENT PRACTICES.
13. THE SITE MODIFICATIONS ARE PROPOSED TO BE BUILT IN ONE PHASE.
14. TEST PITS WERE COMPLETED BY DIPRETE ENGINEERING ON DECEMBER 21, 2009.
15. FORESTED WETLAND EDGE PREVIOUSLY FLAGGED AS PART OF RIDEM APPLICATION NO. 10-0151.
16. ANY PROPRIETARY PRODUCTS REFERENCED IN THIS PLAN SET ARE REPRESENTATIVE OF THE MINIMUM DESIGN REQUIREMENTS FOR THE PURPOSE THEY PROPOSE TO SERVE. ALTERNATIVES TO ANY PROPRIETARY PRODUCT MAY BE SUBMITTED TO THE ENGINEER OF RECORD FOR CONSIDERATION, WHICH MUST BE ACCOMPANIED BY APPROPRIATE SPECIFICATION SHEETS/DESIGN CALCULATIONS THAT DEMONSTRATE THE ALTERNATIVES MEET THE MINIMUM DESIGN PARAMETERS OF THE PRODUCT SHOWN ON THE PLANS. NO ALTERNATIVES MAY BE USED WITHOUT THE WRITTEN APPROVAL OF THE ENGINEER OF RECORD.
17. THIS PLAN SET MAY REFERENCE AND/OR INCLUDE REPRODUCTIONS OF PROPRIETARY PRODUCTS/DETAILS BY OTHERS, AND/OR THEIR ASSOCIATED SPECIFICATIONS, ANY REFERENCED OR REPRODUCED PROPRIETARY PRODUCT OR DETAIL BY OTHERS THAT IS SHOWN ON DIPRETE PLANS IS STRICTLY FOR INFORMATION/SPECIFICATION PURPOSES ONLY. DIPRETE ENGINEERING DOES NOT WARRANT ANY PROPRIETARY PRODUCTS, DETAILS BY OTHERS OR THEIR RESPECTIVE DESIGNS. IF A DIPRETE ENGINEERING PLAN INCLUDES A PROPRIETARY PRODUCT/DETAIL BY OTHERS (EITHER EXPLICITLY OR IMPLIED) AND IS STAMPED BY A REGISTERED PROFESSIONAL ENGINEER AND/OR REGISTERED LANDSCAPE ARCHITECT OF DIPRETE ENGINEERING, SAID STAMP DOES NOT EXTEND TO ANY PORTION OF THE PROPRIETARY PRODUCT/DETAIL BY OTHERS OR ITS DESIGN.

SOIL INFORMATION:

(REFERENCE: SOIL MAPPING OBTAINED FROM RIGIS. SOIL GEOGRAPHIC DATA DEVELOPED BY THE RHODE ISLAND SOIL SURVEY PROGRAM IN PARTNERSHIP WITH THE NATIONAL COOPERATIVE SOIL SURVEY)

Table with 2 columns: SOIL NAME DESCRIPTION and SOIL NAME DESCRIPTION. Rows include Cda*, Cdb, Cdc, Cdu, and Ud.

NOTE: *PRIME FARMLAND

SOIL EROSION AND SEDIMENT CONTROL NOTES:

- 1. THE CONTRACTOR IS RESPONSIBLE FOR ALL SOIL EROSION AND SEDIMENT CONTROL ON SITE WHICH MUST BE CONSTRUCTED AND MAINTAINED IN ACCORDANCE WITH THE APPLICABLE REGULATIONS AND AUTHORITY HAVING JURISDICTION. THE CONTRACTOR MUST NOTIFY THE DESIGN ENGINEER, THE DIRECTOR OF PUBLIC WORKS, THE TOWN ENGINEER, AND RHODE ISLAND DEPARTMENT OF ENVIRONMENTAL MANAGEMENT AT LEAST 48 HOURS PRIOR TO THE START OF CONSTRUCTION.
2. ALL EROSION CONTROL INCLUDING MUST BE INSTALLED PER THE LATEST EDITION OF THE RHODE ISLAND SOIL EROSION AND SEDIMENT CONTROL (RISESC) HANDBOOK AND THE SOIL EROSION AND SEDIMENT CONTROL PLANS. NOTE THE SOIL EROSION AND SEDIMENT CONTROL SHOWN ON THESE PLANS ARE THE MINIMUM QUANTITY/TYPES OF EROSION CONTROL DEVICES AND MATERIALS DEEMED REQUIRED BY DIPRETE ENGINEERING TO MEET THE OBJECTIVES OF THE RISESC HANDBOOK, BUT IS CONSIDERED A GUIDE ONLY. ADDITIONAL MEASURES/ALTERNATE CONFIGURATIONS MAY BE REQUIRED IN ORDER TO MEET THE RISESC HANDBOOK BASED ON FACTORS INCLUDING (BUT NOT LIMITED TO) SITE PARAMETERS, WEATHER, INSPECTIONS AND UNIQUE FEATURES. THE SECC WILL CONTINUE TO EVOLVE THROUGHOUT CONSTRUCTION/PHASES. PURSUANT TO NOTE 1 ABOVE, SECC REMAINS THE RESPONSIBILITY OF THE CONTRACTOR UNTIL THE SITE IS FULLY STABILIZED AND/OR SECC RESPONSIBILITIES ARE ASSUMED BY THE OWNER IN WRITING.
3. TEMPORARY SWALES MUST BE USED TO CONTROL RUNOFF DURING CONSTRUCTION OF THE PROPOSED SITE WORK, AND MUST BE VEGETATED AFTER CONSTRUCTION. EROSION CONTROL MATS MUST BE INSTALLED, IF NECESSARY, TO PREVENT EROSION AND SUPPORT VEGETATION. AFTER CONSTRUCTION IS COMPLETE AND TRIBUTARY AREAS TO THE SWALES HAVE BEEN STABILIZED, THE TEMPORARY SWALES MUST BE CLEARED AND FINAL DESIGN, INCLUDING INSTALLATION OF ANY GRASS SWALES MUST BE PER THE DESIGN PLANS.
4. FOR SEQUENCE OF CONSTRUCTION, PROJECT PHASING AND CONSTRUCTION PHASING SEE SECC PLAN.
5. CONTRACTOR MAY MODIFY SEQUENCE OF CONSTRUCTION WITH APPROVAL FROM DESIGN ENGINEER AND OWNER.
6. IF CONCRETE TRUCKS ARE WASHED OUT ON SITE, ALL WASHOUT MUST BE PERFORMED IN THE DESIGNATED CONCRETE WASHOUT AREA.

DEMOLITION NOTES:

- 1. CONTRACTOR MUST OBTAIN ALL FEDERAL, STATE, AND MUNICIPAL APPROVALS PRIOR TO THE START OF CONSTRUCTION.
2. CONTRACTOR MUST PERFORM DAILY SEEDINGS AT CONSTRUCTION ENTRANCES DURING DEMOLITION AND CONSTRUCTION TO MINIMIZE SEDIMENT ON EXTERNAL STREETS.
3. ANY EXISTING BUILDING(S) AND PROPERTY PROPOSED TO REMAIN THAT ARE DAMAGED BY THE CONTRACTOR MUST BE REPAIRED BY THE CONTRACTOR AT NO ADDITIONAL COST TO THE OWNER.
4. CONTRACTOR IS RESPONSIBLE FOR REMOVING AND LEGALLY DISPOSING (R&D) ALL MATERIALS INDICATED ON THE PLANS UNLESS SPECIFIED OTHERWISE HEREIN. R&D MATERIALS INCLUDE BUT ARE NOT LIMITED TO PAVEMENT, GRAVEL, CATCH BASINS, MANHOLES, GRATES/FRAMES/COVERS, AND ANY EXCESS SOIL THAT IS NOT INCORPORATED INTO THE WORK.
5. IN ADDITION TO THOSE AREAS SPECIFICALLY DESIGNATED ON THE PLANS, ALL DISTURBED AREAS INCLUDING THE CONTRACTOR'S STOCKPILE AND STAGING AREAS WITHIN THE LIMIT OF WORK MUST BE RESTORED TO MATCH THE DESIGN PLANS.
6. CONTRACTOR MUST DOCUMENT LOCATION OF ALL SUBSURFACE UTILITIES REMAINING IN PLACE AFTER DEMOLITION (ACTIVE AND INACTIVE/ABANDONED). LOCATION MUST BE DOCUMENTED BY FIELD SURVEY OR SWING TIES. COPIES OF LOCATION DOCUMENTATION MUST BE PROVIDED TO THE OWNER FOLLOWING COMPLETION OF DEMOLITION AND PRIOR TO START OF NEW CONSTRUCTION. A MARKER MUST BE INSTALLED TO FINISH GROUND AT ALL INSTALLED CAPS/PLUGS. THE MARKER CAN BE A POST IN CONSTRUCTION AREAS OR PAINTED ON A PERMANENT SURFACE.
7. ACTIVE UTILITY LINES AND STRUCTURES NOT SPECIFICALLY NOTED ON PLANS, BUT WHICH ARE ENCOUNTERED TO BE IN CONFLICT WITH THE PROPOSED WORK, MUST BE EXTENDED, PROTECTED, OR REWORKED BY THE CONTRACTOR AS DIRECTED OR REQUIRED BY THE UTILITY ENTITY OR OWNER UNLESS OTHERWISE NOTED.
8. CONTRACTOR MUST COORDINATE THE CUTTING AND CAPPING OF ALL UTILITIES WITH THE OWNER, THE MUNICIPALITY, AND ALL APPLICABLE UTILITY ENTITIES HAVING JURISDICTION.
9. INACTIVE SUBSURFACE UTILITIES NOT IN CONFLICT WITH THE PROPOSED WORK AREA MAY BE ABANDONED IN PLACE WITH WRITTEN PERMISSION FROM THE OWNER.

TRAFFIC NOTES:

- 1. ALL TRAFFIC CONTROL MUST CONFORM TO THE FEDERAL HIGHWAY ADMINISTRATION (FHWA) MANUAL ON UNIFORM TRAFFIC CONTROL DEVICES (MUTCD) CURRENT EDITION.
2. DURING CONSTRUCTION, TRAFFIC CONES MUST BE USED FOR SEPARATION OF ACTIVE TRAFFIC FROM WORK ZONE PER MUTCD REQUIREMENTS.
3. DURING CONSTRUCTION FLAGGERS MUST BE EMPLOYED TO ENSURE SAFETY FOR INTERACTION OF CONSTRUCTION VEHICLES AND ACTIVE TRAFFIC.
4. ALL SIGNS, FLAGGERS, TRAFFIC CONTROL DEVICES, AND TEMPORARY TRAFFIC ZONE ACTIVITIES MUST MEET THE REQUIREMENTS OF THE MUTCD LATEST EDITION AND SUBSEQUENT ADDENDA.
5. TEMPORARY CONSTRUCTION SIGNS MUST BE NOTICED ON RIDOT APPROVED SUPPORTS AND MUST BE REMOVED OR COVERED WHEN NOT APPLICABLE.

AS-BUILT NOTES:

ALL COMPONENTS OF THE PROPOSED DRAINAGE SYSTEM MUST BE FIELD LOCATED PRIOR TO COVERING. NOTIFY SURVEYOR A MINIMUM OF SEVENTY-TWO (72) HOURS IN ADVANCE OF NEED FOR FIELD LOCATION OF IMPROVEMENTS. SURVEYOR MUST PROVIDE OWNER AND CONTRACTOR WITH WRITTEN NOTICE OF COMPLETION OF FIELD WORK PRIOR TO CONTRACTOR COVERING IMPROVEMENTS. OWNER/DIPRETE WILL NOT ACCEPT FIELD MEASUREMENTS FROM THE SITE CONTRACTOR.

LAYOUT AND MATERIALS:

- 1. DIMENSIONS ARE FROM THE FACE OF CURB, FACE OF BUILDING, FACE OF WALL, AND CENTER LINE OF PAVEMENT MARKINGS, UNLESS OTHERWISE NOTED.
2. SYMBOLS AND LEGENDS OF PROJECT FEATURES ARE GRAPHIC REPRESENTATIONS AND ARE NOT NECESSARILY SCALED TO THEIR ACTUAL DIMENSIONS OR LOCATIONS ON THE DRAWINGS. THE CONTRACTOR MUST REFER TO THE DETAIL SHEET DIMENSIONS, MANUFACTURERS' LITERATURE, SHOP DRAWINGS AND FIELD MEASUREMENTS OF SUPPLIED PRODUCTS FOR LAYOUT OF THE PROJECT FEATURES.
3. PROPOSED BOUNDS AND ANY EXISTING PROPERTY LINE MONUMENTATION DISTURBED DURING CONSTRUCTION MUST BE SET OR RESET BY A PROFESSIONAL LICENSED SURVEYOR.
4. CONTRACTOR MUST NOT RELY SOLELY ON ELECTRONIC VERSIONS OF PLANS, SPECIFICATIONS AND DATA FILES THAT ARE OBTAINED FROM THE DESIGNERS. CONTRACTOR MUST VERIFY LOCATION OF PROJECT FEATURES IN ACCORDANCE WITH THE STAMPED PAPER COPIES OF THE PLANS AND SPECIFICATIONS THAT ARE SUPPLIED AS PART OF THE CONTRACT DOCUMENTS.
5. ALL GUARDRAIL ON-SITE MUST BE STEEL BACKED TIMBER GUARDRAIL WITH STEEL POSTS, IN CONFORMANCE WITH SECTION 5.4.1.7 OF THE AASHTO ROADSIDE DESIGN GUIDE. ALTERNATIVE GUARDRAILS WILL BE CONSIDERED BY THE DESIGN ENGINEER IF THEY ARE RIDOT APPROVED EQUAL AND ACCEPTABLE TO THE OWNER. ALTERNATIVES MUST BE APPROVED IN WRITING BY THE OWNER AND DESIGN ENGINEER PRIOR TO CONSTRUCTION. GUARDRAIL INSTALLATION MUST FOLLOW RIDOT STD. 34.1.0.
6. INFRARED TREATMENT OF PAVEMENT IS REQUIRED AT ALL CURB CUTS, AT ANY DISTURBED PAVEMENT ON ROADWAYS, AND WHERE ANY NEW PAVEMENT MEETS EXISTING PAVEMENT.

GRADING AND UTILITY NOTES:

- 1. CONSTRUCTION TO COMMENCE FALL 2021 OR UPON RECEIPT OF ALL NECESSARY APPROVALS.
2. PRIOR TO START OF CONSTRUCTION, CONTRACTOR MUST VERIFY EXISTING PAVEMENT ELEVATIONS AT INTERFACE WITH PROPOSED PAVEMENTS, AND EXISTING GROUND ELEVATIONS ADJACENT TO DRAINAGE OUTLETS TO ASSURE PROPER TRANSITIONS BETWEEN EXISTING AND PROPOSED FACILITIES. CONTRACTOR MUST NOTIFY DESIGN ENGINEER OF ANY DISCREPANCIES PRIOR TO CONSTRUCTION.
3. ALL RETAINING WALLS AND STEEP SLOPES ARE SUBJECT TO FINAL STRUCTURAL DESIGN. DIPRETE ENGINEERING IS NOT PROVIDING THE STRUCTURAL DESIGN OF THESE ITEMS. ALL WALLS AND STEEP SLOPES MUST BE DESIGNED AND BUILT UNDER THE DIRECTION OF A RHODE ISLAND LICENSED PROFESSIONAL ENGINEER SUITABLY QUALIFIED IN GEOTECHNICAL ENGINEERING AND CERTIFIED TO THE OWNER PRIOR TO THE COMPLETION OF THE PROJECT. SHOP DRAWINGS MUST BE SUBMITTED PRIOR TO CONSTRUCTION. FINAL STRUCTURAL DESIGN MUST INCORPORATE THE INTENT OF THE GRADING SHOWN ON THESE PLANS AND ALL WORK MUST BE WITHIN THE LIMIT OF DISTURBANCE SHOWN ON THE PLANS.
4. ALL CUT AND FILL WORK MUST BE DONE UNDER THE DIRECTION OF A PROFESSIONAL GEOTECHNICAL ENGINEER, WITH TESTING AND CERTIFICATION PROVIDED TO THE OWNER AT THE COMPLETION OF THE PROJECT. DIPRETE ENGINEERING IS NOT PROVIDING THE FILL SPECIFICATION, GEOTECHNICAL ENGINEERING, STRUCTURAL ENGINEERING SERVICES, OR SUPERVISION AS PART OF THESE DRAWINGS.
5. ALL LOAM IN DISTURBED AREAS MUST BE STOCKPILED FOR FUTURE USE. ALL STOCKPILED LOAM MUST BE RESTORED ON-SITE.
6. ALL EXCESS SOIL, TREES, ROCKS, BouldERS, AND OTHER REFUSE, MUST BE DISCARDED OFF SITE IN ACCORDANCE WITH ALL FEDERAL, STATE AND LOCAL REGULATIONS. STUMPS MUST BE GROUND ON SITE OR REMOVED.
7. NO STUMP DUMPS ARE PROPOSED ON SITE.
8. ALL DRAINAGE OUTFALLS ARE DESIGNED TO BE INSTALLED AT EXISTING GROUND ELEVATION. CONTRACTOR MUST IMMEDIATELY NOTIFY DIPRETE ENGINEERING OF ANY DISCREPANCIES WHERE EXISTING GROUND IS HIGHER THAN OUTFALL DESIGN ELEVATION. ANY RESOLUTION OF DISCREPANCIES BY THE CONTRACTOR, UNLESS AUTHORIZED IN WRITING IN ADVANCE BY THE OWNER AND DIPRETE ENGINEERING, IS DONE AT THE CONTRACTOR'S RISK.
9. CONTRACTOR MUST PROVIDE SAW CUTTING AND FULL DEPTH PAVEMENT RESTORATION IN AREAS WHERE PAVEMENT IS REMOVED FOR DRAINAGE INSTALLATION.

DRAINAGE

ALL DRAINAGE PIPING MUST BE HIGH-DENSITY POLYETHYLENE (HDPE) WITH WATERTIGHT JOINTS WHERE INSTALLED WITHIN THE SEASONAL HIGH GROUNDWATER TABLE, UNLESS NOTED OTHERWISE ON THE PLANS OR IN THE SPECIFICATIONS. ALL STORMWATER PIPE WITHIN THE STATE'S RIGHT-OF-WAY MUST BE REINFORCED CONCRETE PIPE (RCP).

DRAINAGE STRUCTURES MUST BE AS FOLLOWS (UNLESS OTHERWISE NOTED ON PLANS):

- DRAINAGE MANHOLE COVERS: RIDOT STD 6.2.1
• SINGLE FRAME CATCH BASIN GRATES: RIDOT STD 6.3.1

ALL DRAINAGE STRUCTURES MUST BE WATERTIGHT.

STORMCEPTOR TO BE MODEL STC 7200.

REDEVELOPMENT NOTES:

- 1. ALL EXISTING MANHOLE COVERS, GRATES, VALVE BOXES, SHUT-OFFS, AND HAND HOLES WITHIN THE LIMIT OF WORK MUST BE RESET TO FINISHED GRADE.
2. THE CONTRACTOR MUST PROTECT AND MAINTAIN ALL BUILDINGS AND ALL ACTIVE UTILITIES THAT SERVICE THE BUILDINGS.

ABBREVIATIONS LEGEND

Table with 2 columns: Abbreviation and Description. Includes ADA, AHJ, AP, ARCH, BC, BT, BIT, BIO, BS, BW, CB, (C), CAL, CLDP, CO, CONC, (D), DCB, DI, DMH, DP, ELEV, EOP, ESC, EX, FES, FFE, GS, GWT, HW, HDPE, ID, INV, IP, LARCH, LF, LOD, LP, (M), MEP, N/F, OHW, PE, P, PR, PVC, R, R&D, RCP, RHB, RHW, RL, ROW, S, SD, SED, SF, SFL, SFM, SG, SHL, SMH, SNDF, SS, STA, TC, TD, TF, TRANS, TW, TYP, UDS, UNDERGROUND, INFILTRATION POND, LANDSCAPE ARCHITECT, LINEAR FENCE, LIMIT OF DISTURBANCE, LIGHT POLE, MEASURED, MECHANICAL/ELECTRICAL/PLUMBING ENGINEER.

EXISTING LEGEND

Table with 2 columns: Symbol and Description. Includes symbols for PROPERTY LINE, ASSESSORS LINE, BUILDING, BRUSHLINE, TREELINE, GUARDRAIL, FENCE, RETAINING WALL, STONE WALL, MINOR CONTOUR LINE, MAJOR CONTOUR LINE, WATER LINE, SEWER LINE, SEWER FORCE MAIN, GAS LINE, ELECTRIC LINE, OVERHEAD WIRES, DRAINAGE LINE, SOILS LINES, 50' PERIMETER WETLAND, 100' RIVERBANK WETLAND, 200' RIVERBANK WETLAND, FEHA BOUNDARY, STREAM, WETLAND LINE & FLAG, STATE HIGHWAY LINE, STATE FREEWAY LINE, GROUNDWATER OVERLAY, GROUNDWATER RECHARGE AREA, GROUNDWATER RESERVOIR, NATURAL HERITAGE, COMMUNITY WELLHEAD PROTECTION, NON-COMMUNITY WELLHEAD PROTECTION, NAIL FOUND/SET, DRILL HOLE FOUND/SET, BOUND FOUND/SET, SIGN, BOLLARD, SOIL EVALUATION, CATCH BASIN, DOUBLE CATCH BASIN, FLARED END SECTION, GUY POLE, ELECTRIC MANHOLE, UTILITY/POWER POLE, LIGHTPOST, SEWER/SEPTIC MANHOLE, SEWER VALVE, CLEANOUT, HYDRANT, IRRIGATION VALVE, WATER VALVE, WELL, MONITORING WELL, UNKNOWN MANHOLE, GAS VALVE, BENCH MARK, STREAM FLOW DIRECTION.

PROPOSED LEGEND

Table with 2 columns: Symbol and Description. Includes symbols for PROPERTY LINE, BUILDING SETBACKS, CHAINLINK FENCE, GUARDRAIL SEE LAYOUT AND MATERIALS NOTE 5, RETAINING WALL, MINOR CONTOUR LINE, MAJOR CONTOUR LINE, SPOT ELEVATION, EDGE OF PAVEMENT, BITUMINOUS BERM, CONCRETE CURB (RIDOT STD 7.1.0), BUILDING FOOTPRINT, BUILDING OVERHANG, ASPHALT PAVEMENT, HEAVY DUTY ASPHALT PAVEMENT, HEAVY DUTY CONCRETE, CONCRETE, ASPHALT SIDEWALK, SAWCUT LINE, SIGN (RIDOT STD 24.6.2 AS APPLICABLE), SINGLE LIGHT, DOUBLE LIGHT, OVERHANGING LIGHT, ACCESSIBLE PARKING SPACE SYMBOLS, BUILDING INGRESS/EGRESS, DRAINAGE LINE, PERFORATED SUBDRAIN, SWALE, SEWER FORCE MAIN, GAS LINE, WATER LINE, HYDRANT ASSEMBLY, WATER SHUT OFF, WATER VALVE, THRUST BLOCK, SEWER LINE, OVERHEAD WIRE, ELECTRIC, TELEPHONE, CABLE LINE, LIMIT OF DISTURBANCE/ LIMIT OF CLEARING, SEDIMENTATION BARRIER, SILT FENCE (RIDOT STD 9.2.0), COMPOST SOCK OR APPROVED EQUAL, SLOPES 3H:1V, UNDERGROUND INFILTRATION OUTLINE, POND ACCESS, RIPRAP, SAND FILTER, BIO RETENTION, CATCH BASIN, DOUBLE CATCH BASIN, MANHOLE, FLARED END SECTION, HEADWALL, AUG 25 2021, Office of Water Resources.

UTILITY NOTE:

ALL UNDERGROUND UTILITIES SHOWN ON THESE PLANS WERE PROVIDED BY OTHERS AND ARE APPROXIMATE ONLY. LOCATIONS MUST BE DETERMINED IN THE FIELD BEFORE EXCAVATION, BLASTING, UTILITY INSTALLATION, BACKFILLING, GRADING, PAVEMENT RESTORATION, AND ALL OTHER SITE WORK. ALL UTILITY COMPANIES, PUBLIC AND PRIVATE, MUST BE CONTACTED INCLUDING THOSE IN CONTROL OF UTILITIES NOT SHOWN ON THESE DOCUMENTS. CONTACT DIG SAFE A MINIMUM OF 72 WORKING HOURS PRIOR TO ANY CONSTRUCTION AT 811. DIG SAFE IS RESPONSIBLE FOR CONTACTING MEMBER UTILITY COMPANIES. DIG SAFE MEMBER UTILITY COMPANIES ARE RESPONSIBLE TO MARK ONLY THE FACILITIES THAT THEY OWN OR MAINTAIN. NON DIG SAFE MEMBER COMPANIES ARE NOT NOTIFIED BY DIG SAFE. IT IS THE CONTRACTOR'S RESPONSIBILITY TO INVESTIGATE AND NOTIFY IF ANY PRIVATELY OWNED OR NON DIG SAFE MEMBER UTILITIES ARE IN THE AREA.

PER THE CODE OF FEDERAL REGULATIONS - TITLE 29, PART 1926 IT IS THE SITE CONTRACTOR'S RESPONSIBILITY TO OBTAIN ACCURATE UNDERGROUND UTILITY LINE LOCATIONS FROM THE UTILITY COMPANIES, UTILITY OWNERS AND, OR VIA UNDERGROUND UTILITY LOCATION EQUIPMENT AS NEEDED TO ESTABLISH ACCURATE LOCATIONS PRIOR TO ANY EXCAVATION. THE USE OF PROFESSIONAL UTILITY LOCATING COMPANIES PRIOR TO ANY EXCAVATION IS RECOMMENDED.

DIPRETE ENGINEERING IS NOT A PROFESSIONAL UTILITY LOCATION COMPANY, AND IS NOT RESPONSIBLE FOR UNDERGROUND UTILITIES, DEPICTED OR NOT, EITHER IN SERVICE OR ABANDONED, ANY SIZES, LOCATIONS, EXISTENCE, OR LACK OF EXISTENCE OF UTILITIES SHOWN ON THESE PLANS SHOULD BE CONSIDERED APPROXIMATE UNTIL VERIFIED BY A PROFESSIONAL UTILITY LOCATION COMPANY. DIPRETE ENGINEERING ASSUMES NO RESPONSIBILITY FOR DAMAGES INCURRED.

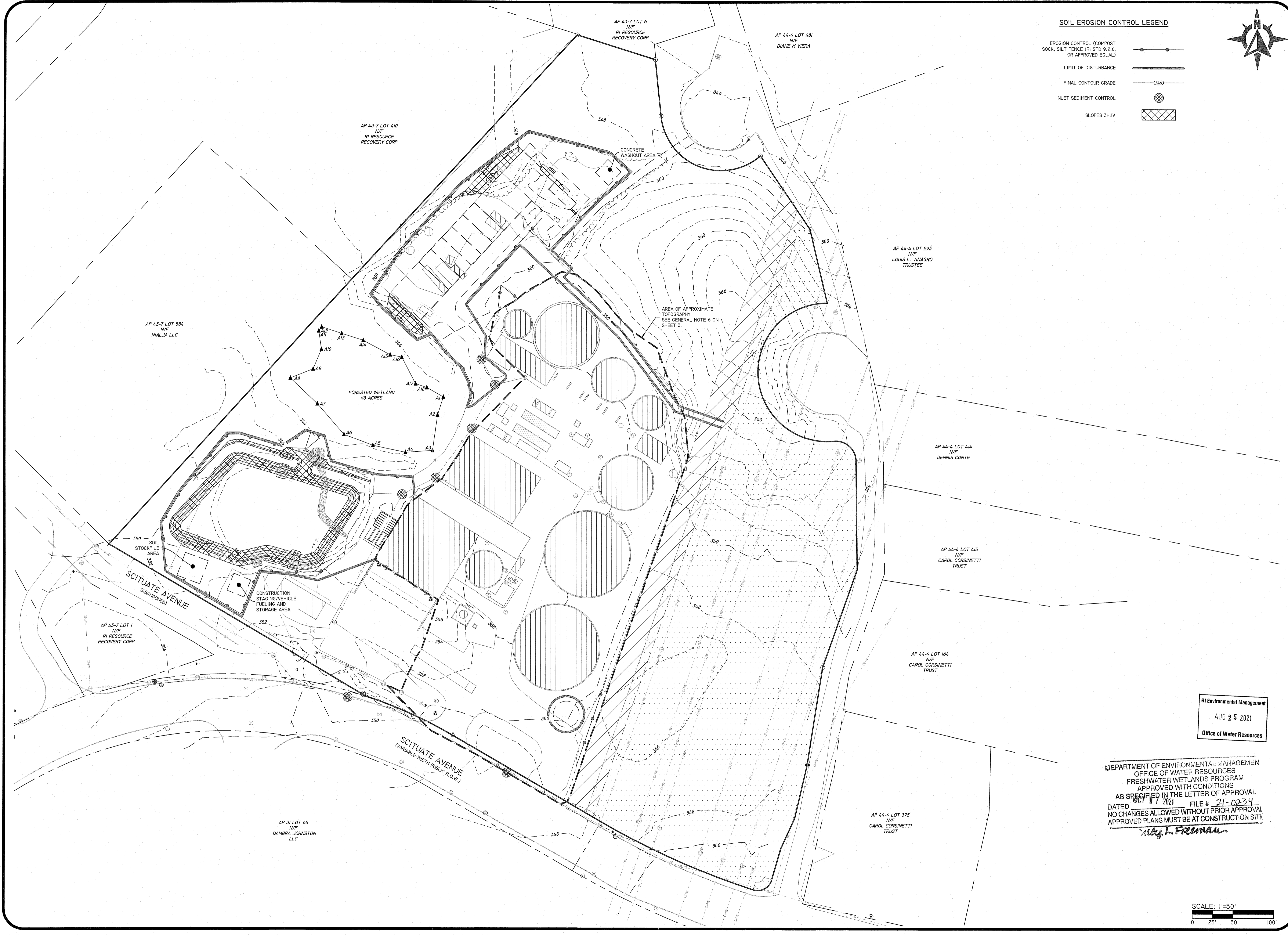
DiPrete Engineering logo and contact information: Two Stafford Court, Johnston, RI 02930, Tel: 401-943-1000, Fax: 401-464-6606, www.diprete-eng.com. Boston Providence Newport.

Professional Engineer stamp for Jason P. Clough, No. 10103, Registered Professional Engineer Civil.

DEPARTMENT OF ENVIRONMENTAL MANAGEMENT OFFICE OF WATER RESOURCES APPROVED WITH CONDITIONS AS SPECIFIED IN THE LETTER OF APPROVAL. DATED OCT 07 2021 FILE # 21-0234. NO CHANGES ALLOWED WITHOUT PRIOR APPROVAL. APPROVED PLANS MUST BE AT CONSTRUCTION SITE. Signed: Nancy L. Freeman.

Table with 4 columns: NO., DATE, DESCRIPTION, DESIGN BY. Row 1: 0, 8/17/2021, RIDOT SUBMISSION, JPC.

NOTES & LEGEND, RHOE ISLAND BIOENERGY FACILITY, ASSESSOR'S PLAT 43-7 LOT 2, JOHNSTON, RHODE ISLAND. PREPARED FOR: SHELBY REALTY, INC. C/O ALEXANDER MACFARLANE, 289 SCITUATE AVENUE, JOHNSTON, RI 02919, TEL: 646 236-3429. SHEET 3 OF 9.



SOIL EROSION CONTROL LEGEND

- EROSION CONTROL (COMPOST SOCK, SILT FENCE (RI STD 9.2.0, OR APPROVED EQUAL))
- LIMIT OF DISTURBANCE
- FINAL CONTOUR GRADE
- INLET SEDIMENT CONTROL
- SLOPES 3H:4V



DiPrete Engineering
 Two Stafford Court Cranston, RI 02920
 Tel: 401-949-1000 Fax: 401-949-6006 www.diprete-eng.com
 Boston • Providence • Newport

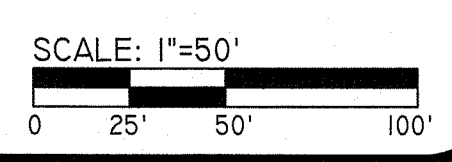
JASON P. CLOUGH
 No.
 REGISTERED PROFESSIONAL ENGINEER
 CIVIL

THIS PLAN IS TO BE USED FOR CONSTRUCTION PURPOSES ONLY. THE CONTRACTOR SHALL BE RESPONSIBLE FOR OBTAINING ALL NECESSARY PERMITS AND APPROVALS FROM THE APPLICABLE AGENCIES.
 THE CONTRACTOR SHALL BE RESPONSIBLE FOR OBTAINING ALL NECESSARY PERMITS AND APPROVALS FROM THE APPLICABLE AGENCIES.
 THE CONTRACTOR SHALL BE RESPONSIBLE FOR OBTAINING ALL NECESSARY PERMITS AND APPROVALS FROM THE APPLICABLE AGENCIES.
 THE CONTRACTOR SHALL BE RESPONSIBLE FOR OBTAINING ALL NECESSARY PERMITS AND APPROVALS FROM THE APPLICABLE AGENCIES.
 THE CONTRACTOR SHALL BE RESPONSIBLE FOR OBTAINING ALL NECESSARY PERMITS AND APPROVALS FROM THE APPLICABLE AGENCIES.

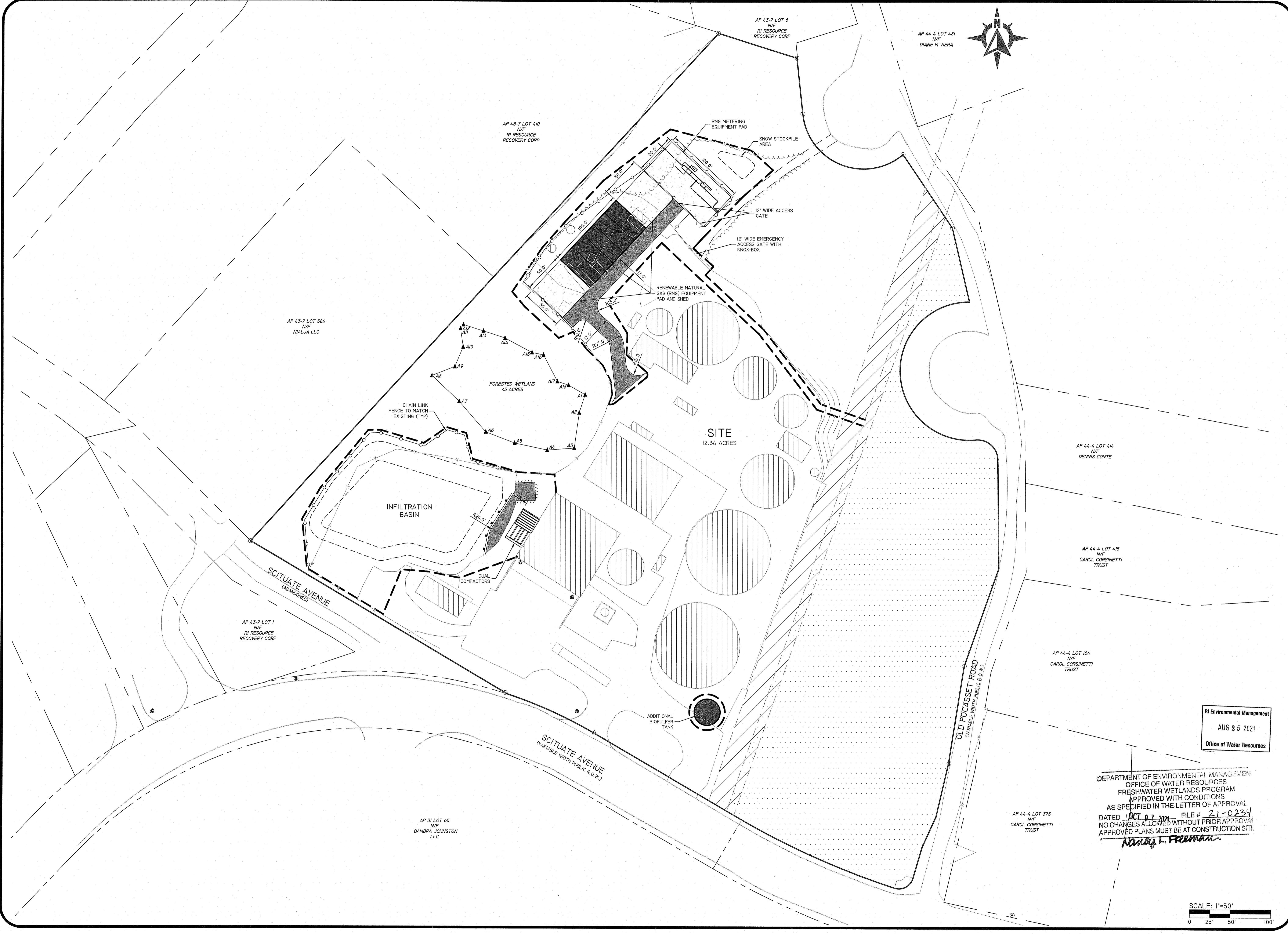
NO.	DATE	REVISION	DESCRIPTION	BY:
0	8/22/2021	REVISION	DESCRIPTION	BY:
				DESIGN BY: JPC
				DRAWN BY: SDK

RI Environmental Management
 AUG 25 2021
 Office of Water Resources

DEPARTMENT OF ENVIRONMENTAL MANAGEMENT
 OFFICE OF WATER RESOURCES
 FRESHWATER WETLANDS PROGRAM
 APPROVED WITH CONDITIONS
 AS SPECIFIED IN THE LETTER OF APPROVAL
 DATED 08/17/2021 FILE # 21-0234
 NO CHANGES ALLOWED WITHOUT PRIOR APPROVAL
 APPROVED PLANS MUST BE AT CONSTRUCTION SITE
Shelby L. Freeman



SOIL EROSION & SEDIMENT CONTROL PLAN
 RHODE ISLAND BIOENERGY FACILITY
 ASSESSOR'S PLAT 43-7 LOT 2
 JOHNSTON, RHODE ISLAND
 PREPARED FOR:
 SHELBY REALTY, INC. C/O ALEXANDER MACFARLANE
 289 SCITUATE AVENUE JOHNSTON, RI 02919
 TEL. 646 236-5439



SCALE: 1"=50'

DEPARTMENT OF ENVIRONMENTAL MANAGEMENT
 OFFICE OF WATER RESOURCES
 FRESHWATER WETLANDS PROGRAM
 APPROVED WITH CONDITIONS
 AS SPECIFIED IN THE LETTER OF APPROVAL
 DATED 10/07/2021 FILE # 21-0234
 NO CHANGES ALLOWED WITHOUT PRIOR APPROVAL
 APPROVED PLANS MUST BE AT CONSTRUCTION SITE
Nancy L. Freeman

RI Environmental Management
 AUG 25 2021
 Office of Water Resources

OVERALL SITE LAYOUT PLAN
 RHODE ISLAND BIOENERGY FACILITY
 JOHNSTON, RHODE ISLAND
 PREPARED FOR:
 SHELBY REALTY, INC. c/o ALEXANDER MACFARLANE
 289 SCITUATE AVENUE JOHNSTON, RI 02919
 TEL 646 236-5439

NO.	DATE	REVISION	DESCRIPTION	BY:
0	8/22/2021	ORDER SUBMISSION		SDM
				JPC

DESIGN BY: JPC
 DRAWN BY: SDM

THIS PLAN SET MUST NOT BE USED FOR CONSTRUCTION PURPOSES UNLESS STAMPED AND SIGNED FOR CONSTRUCTION AND STAMPED BY AN ENGINEER. PROFESSIONAL ENGINEER OF RHODE ISLAND. DIPIRETE ENGINEERING ONLY WARRANTS PLANS ON A DIPIRETE ENGINEERING PROJECT. THIS PLAN IS THE PROPERTY OF DIPIRETE ENGINEERING AND IS NOT TO BE REPRODUCED, COPIED, OR TRANSMITTED IN ANY FORM OR BY ANY MEANS, ELECTRONIC OR MECHANICAL, INCLUDING PHOTOCOPYING, RECORDING, OR BY ANY INFORMATION STORAGE AND RETRIEVAL SYSTEM. THE CONTRACTOR IS RESPONSIBLE FOR ALL OF THE MEANS, METHODS, TECHNIQUES, AND SEQUENCES OF CONSTRUCTION AND FOR OBTAINING ALL NECESSARY PERMITS AND APPROVALS. DIPIRETE ENGINEERING ASSUMES NO RESPONSIBILITY FOR THE CONFORMANCE IN THE IMPLEMENTATION OF THIS PLAN AND DESIGN. SEE UTILITY NOTES ON SHEET 0.

JASON P. CLOUGH
 No. *[Signature]*
 REGISTERED PROFESSIONAL ENGINEER
 CIVIL

DiPrete Engineering
 Two Stafford Court Cranston, RI 02909
 Tel 401-949-1000 Fax 401-946-6006 www.diprete-eng.com
 Boston • Providence • Newport

Z:\06MAINPROJECTS\0384-002 BLUESPHERE BIOGAS PROJECT\AUTOCAD DRAWINGS\0384-002-PLAN\DWG PLOTTER: 8/22/2021



AP 43-7 LOT 410
N/F
RI RESOURCE RECOVERY CORP

RNG METERING EQUIPMENT PAD
PAD ELEVATION 350.50

RENEWABLE NATURAL GAS (RNG)
EQUIPMENT PAD AND SHED.
PAD ELEVATION 351.50

AP 43-7 LOT 584
N/F
NALJA LLC

FORESTED WETLAND
<5 ACRES

REMOVE AND RESET
EXISTING OUTLET CONTROL
STRUCTURE, ADJUST RIM.

REMOVE AND RESET RIPRAP

INFILTRATION
BASIN
TOP ELEV=348.50
BOT ELEV=344.00
(SEE SHEET 8)

STORMCEPTOR
RIM=349.00
INV OUT=344.20(FES-1)

MATCH EXISTING PIPE TYPE, SLOPE
AND SIZE. EXTEND 17' TO BOTTOM
OF BASIN. PROVIDE FLARED END
SECTION OF MATCHING SIZE

REMOVE AND RESET RIPRAP
AT RELOCATED OUTFALL

AP 43-7 LOT 1
N/F
RI RESOURCE RECOVERY CORP

SCITUATE AVENUE
(ABANDONED)

RNG PIPE CONNECTION TO EXISTING
TENNESSEE GAS
COMPANY PIPELINE

RI Environmental Management
AUG 25 2021
Office of Water Resources

DEPARTMENT OF ENVIRONMENTAL MANAGEMENT
OFFICE OF WATER RESOURCES
FRESHWATER WETLANDS PROGRAM
APPROVED WITH CONDITIONS
AS SPECIFIED IN THE LETTER OF APPROVAL
DATED OCT 07 2021 FILE # 21-0234
NO CHANGES ALLOWED WITHOUT PRIOR APPROVAL
APPROVED PLANS MUST BE AT CONSTRUCTION SITE!

Nancy L. Freeman

SCALE: 1"=30'

DiPrete Engineering

Two Stafford Court, Cranston, RI 02920
Tel: 401-945-1000 Fax: 401-945-6006 www.diprete-eng.com

JASON P. CLOUGH
No. [Signature]
REGISTERED
PROFESSIONAL ENGINEER
CIVIL

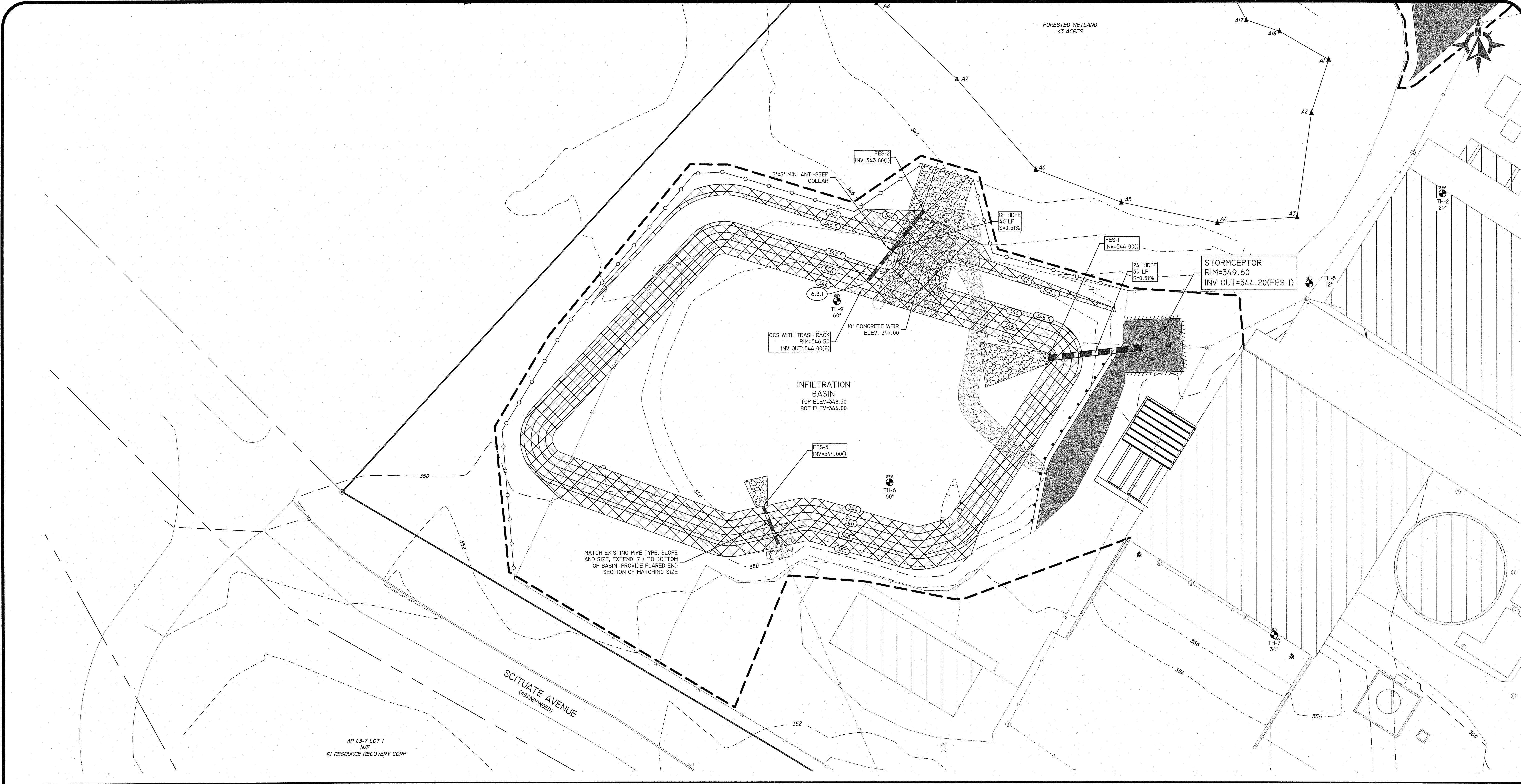
THIS PLAN SET MUST NOT BE USED FOR CONSTRUCTION PURPOSES
UNLESS STAMPED, ISSUED FOR CONSTRUCTION AND STARTED BY
ENGINEERING. PROFESSIONAL ENGINEER OF DIPRETE
DIPRETE ENGINEERING ONLY WARRANTS PLANS ON A DIPRETE
PROFESSIONAL ENGINEER'S SEAL AND REGISTERED
PROFESSIONAL ENGINEER'S LICENSE. DIPRETE
ENGINEERING DOES NOT WARRANT PLANS BY ANY OTHER PARTY.
THE CONTRACTOR IS RESPONSIBLE FOR ALL OF THE MEANS, METHODS,
MATERIALS, AND UTILITIES SHOWN ON THIS PLAN. THE CONTRACTOR
ONLY, DIPRETE ENGINEERING ASSUMES NO RESPONSIBILITY FOR
CONFORMANCE IN THE IMPLEMENTATION OF THE PLAN AND
SEE UTILITY NOTES ON SHEET

NO.	DATE	DESCRIPTION	BY
0	8/22/2021	RI Environmental Management	JPC
1	8/22/2021	RI Environmental Management	JPC
2	8/22/2021	RI Environmental Management	JPC
3	8/22/2021	RI Environmental Management	JPC
4	8/22/2021	RI Environmental Management	JPC
5	8/22/2021	RI Environmental Management	JPC
6	8/22/2021	RI Environmental Management	JPC
7	8/22/2021	RI Environmental Management	JPC
8	8/22/2021	RI Environmental Management	JPC
9	8/22/2021	RI Environmental Management	JPC
10	8/22/2021	RI Environmental Management	JPC
11	8/22/2021	RI Environmental Management	JPC
12	8/22/2021	RI Environmental Management	JPC
13	8/22/2021	RI Environmental Management	JPC
14	8/22/2021	RI Environmental Management	JPC
15	8/22/2021	RI Environmental Management	JPC
16	8/22/2021	RI Environmental Management	JPC
17	8/22/2021	RI Environmental Management	JPC
18	8/22/2021	RI Environmental Management	JPC
19	8/22/2021	RI Environmental Management	JPC
20	8/22/2021	RI Environmental Management	JPC

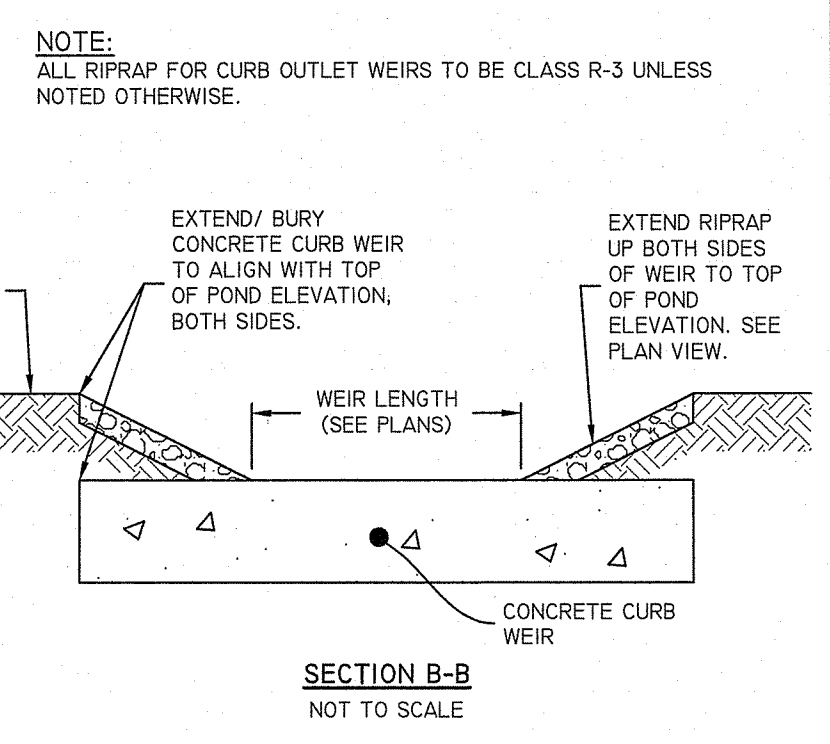
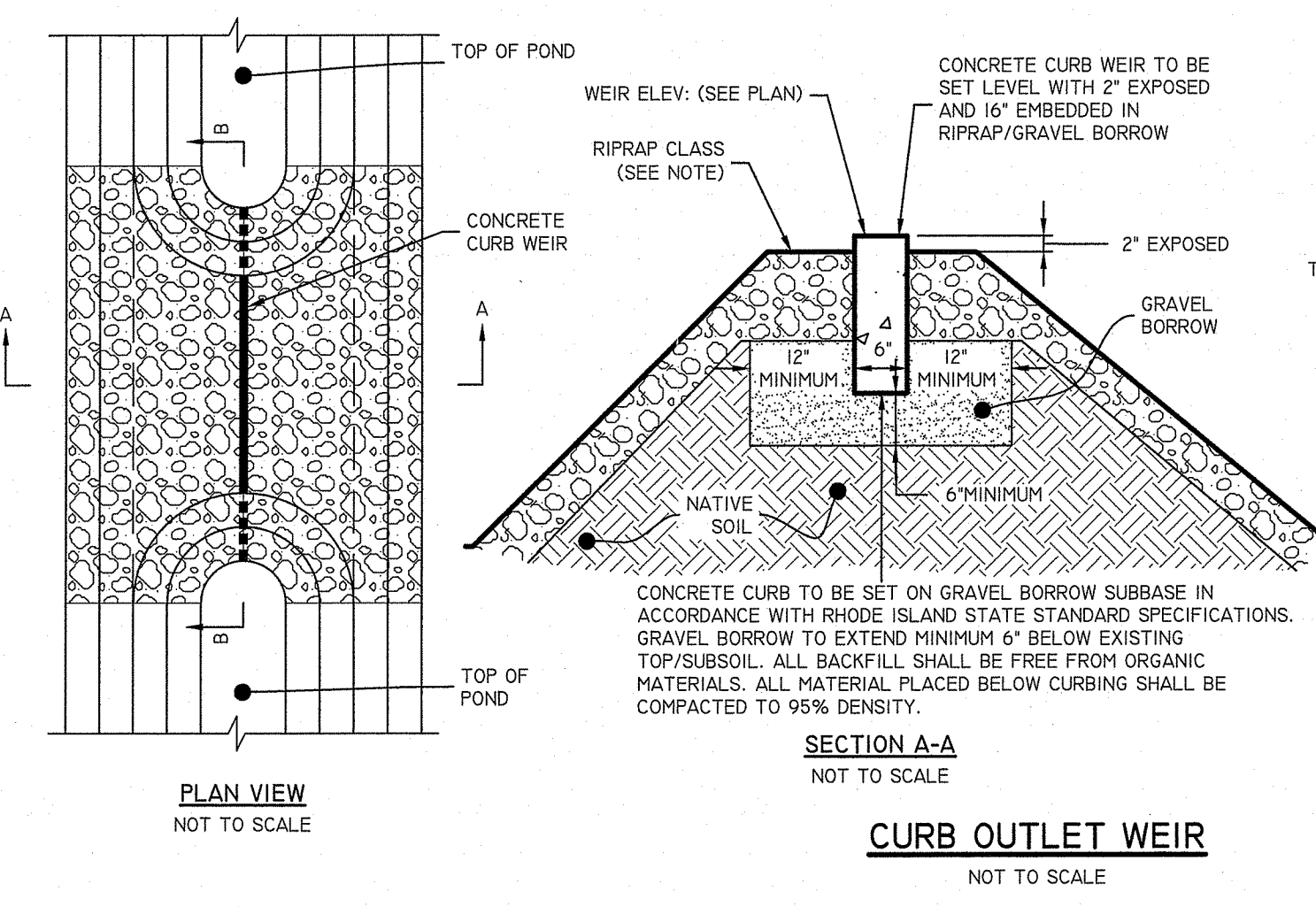
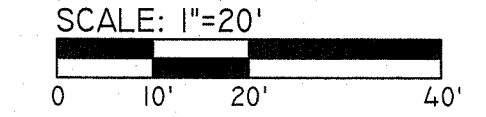
GRADING & DRAINAGE PLAN

RHODE ISLAND BIOENERGY FACILITY
ASSESSOR'S PLAT 43-7 LOT 2
JOHNSTON, RHODE ISLAND

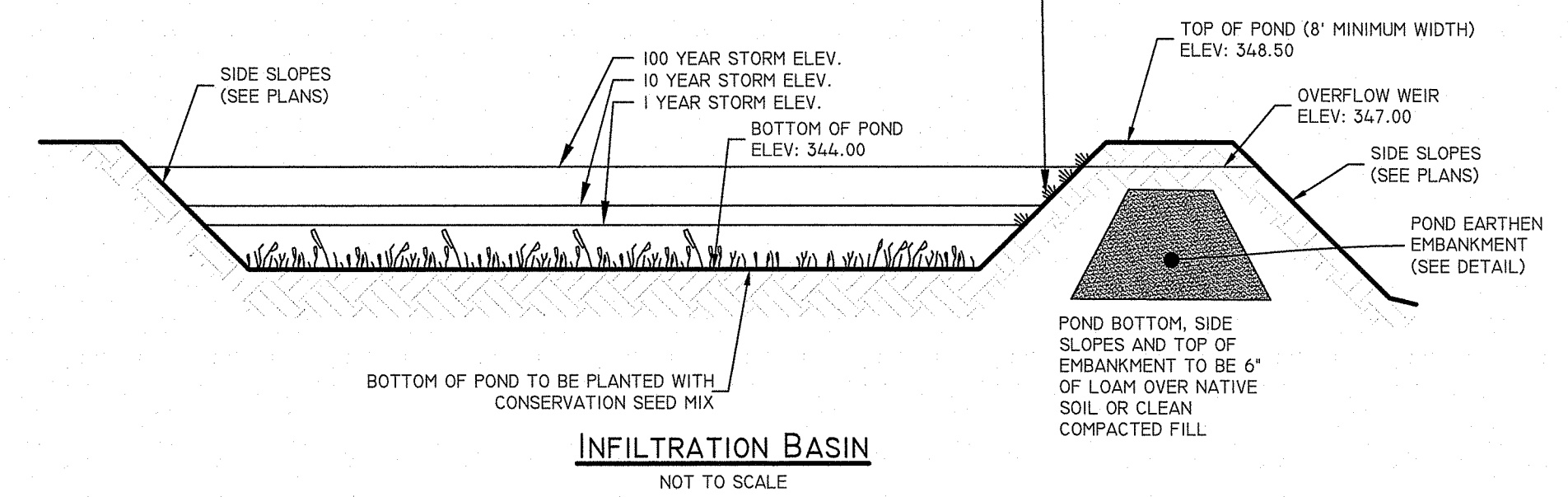
PREPARED FOR
SHELBY REALTY, INC. C/O ALEXANDER MACFARLANE
289 SCITUATE AVENUE JOHNSTON, RI 02919
TEL 646 236-3439



INFILTRATION BASIN



DESCRIPTION	IB
TOP OF POND ELEVATION	348.50
100 YEAR STORM ELEVATION	347.45
10 YEAR STORM ELEVATION	346.37
1 YEAR STORM ELEVATION	346.77
BOTTOM OF POND ELEVATION	344.00
SEASONAL HIGH GWT ELEVATION	341.0
SOIL EVALUATION	TH-6, TH-9



DEPARTMENT OF ENVIRONMENTAL MANAGEMENT
OFFICE OF WATER RESOURCES
FRESHWATER WETLANDS PROGRAM
APPROVED WITH CONDITIONS
AS SPECIFIED IN THE LETTER OF APPROVAL
DATED 10/10/2021 FILE # 21-0234
NO CHANGES ALLOWED WITHOUT PRIOR APPROVAL
APPROVED PLANS MUST BE AT CONSTRUCTION SITE

AUG 25 2021
Office of Water Resources

INFILTRATION BASIN DETAILS
RHODE ISLAND BIOENERGY FACILITY
ASSESSOR'S PLAT 43-7 LOT 2
JOHNSTON, RHODE ISLAND
PREPARED FOR:
SHELBY REALTY, INC. C/O ALEXANDER MACFARLANE
289 SCITUATE AVENUE JOHNSTON, RI 02919
TEL 544 256-3439

JASON P. CLOUGH
No. [Signature]
REGISTERED PROFESSIONAL ENGINEER
CIVIL

THIS PLAN SET MAY NOT BE USED FOR CONSTRUCTION PURPOSES UNLESS STAMPED, SIGNED AND DATED BY THE REGISTERED PROFESSIONAL ENGINEER OF DIPRETE ENGINEERING. DIPRETE ENGINEERING ONLY WARRANTS PLANS ON A DIPRETE ENGINEERING TITLE BLOCK STAMPED BY REGISTERED PROFESSIONAL ENGINEERS. DIPRETE ENGINEERING DOES NOT WARRANT PLANS BY ANY OTHER PARTY. THE CONTRACTOR IS RESPONSIBLE FOR ALL OF THE MEANS, METHODS, MATERIALS, AND SEQUENCES OF CONSTRUCTION. ONLY DIPRETE ENGINEERING ASSUMES RESPONSIBILITY FOR THE ACCURACY OF THE INFORMATION AND DATA PROVIDED ON THESE PLANS. SEE ALL NOTES AND SPECIFICATIONS OF EXISTING UTILITIES.

NO.	DATE	DESCRIPTION	BY
1	8/12/2021	REBID SUBMISSION	JPC
2			
3			
4			
5			
6			
7			
8			
9			
10			
11			
12			
13			
14			
15			
16			
17			
18			
19			
20			
21			
22			
23			
24			
25			
26			
27			
28			
29			
30			
31			
32			
33			
34			
35			
36			
37			
38			
39			
40			
41			
42			
43			
44			
45			
46			
47			
48			
49			
50			
51			
52			
53			
54			
55			
56			
57			
58			
59			
60			
61			
62			
63			
64			
65			
66			
67			
68			
69			
70			
71			
72			
73			
74			
75			
76			
77			
78			
79			
80			
81			
82			
83			
84			
85			
86			
87			
88			
89			
90			
91			
92			
93			
94			
95			
96			
97			
98			
99			
100			

Diprete Engineering
Two Stafford Court, Cranston, RI 02920
tel 401-943-1000 fax 401-464-6006 www.diprete-eng.com
Boston • Providence • Newport

Z:\DHAN\PROJECTS\0344-002 BLUESPHERE BIOGAS PROJECT\AUTOCAD DRAWINGS\0344-002-PLAN.DWG PLOTTER: 8/12/2021

AP 43-7 LOT 1
N/F
RI RESOURCE RECOVERY CORP

SCITUATE AVENUE
(ABANDONED)

FORESTED WETLAND
~3 ACRES

