

# Bourne Mill - Phase III

AP 102, Lots 400 & 401

1 Mill Street

Tiverton, Rhode Island

**OWNER/ APPLICANT:**

BOURNE MILLS, LLC  
 C/O THE ARMORY REVIVAL COMPANY  
 334 BROADWAY  
 PROVIDENCE, RI 02909-1102  
 401-272-2720  
 ATTN: MARK VAN NOPPEN, MANAGER

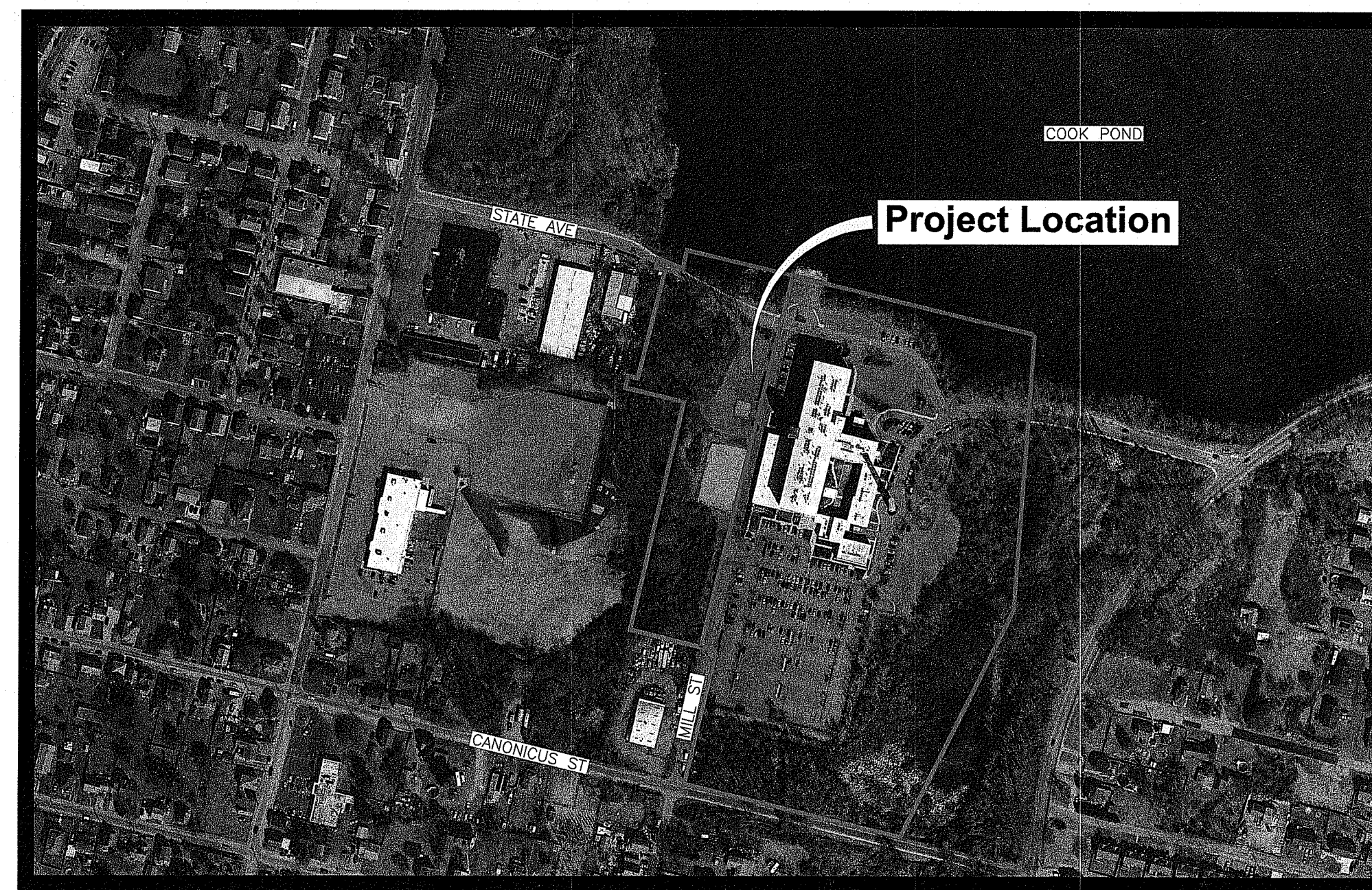
**CIVIL ENGINEER:**



PARE CORPORATION  
 ENGINEERS - SCIENTISTS - PLANNERS  
 8 BLACKSTONE VALLEY PLACE  
 LINCOLN, RI 02865  
 401-334-4100

**LANDSCAPE ARCHITECT:**

Diane C. Soule & Associates, ASLA  
 Landscape Architecture  
 422 Farmington Pike  
 Smithfield, Rhode Island 02917  
 www.dianesouleandassociates.com  
 401-291-0716  
 email: dcsoule@dsas.com



Scale : N.T.S.

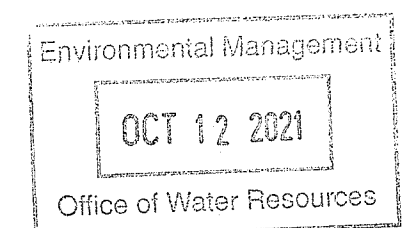
**INDEX OF DRAWINGS**

SHEET No.	DRAWING No.	DESCRIPTION
1	-	COVER SHEET
2	C1.1	NOTES & LEGEND
3	C2.1	DEMOLITION, EROSION & SEDIMENT CONTROL PLAN
4	C3.1	GENERAL PLAN
5	C4.1	GRADING PLAN
6	C5.1	DRAINAGE & UTILITY PLAN
7 - 11	C6.1 - C6.5	DETAILS 1 - 5
12	L1.0	LANDSCAPE PLAN

**RIDEM REQUEST FOR PRELIMINARY DETERMINATION SUBMISSION**  
 October 8, 2021

Kindly be advised that this Permit is not equivalent to a verification of the type or extent of freshwater wetlands on site.

DEPARTMENT OF ENVIRONMENTAL MANAGEMENT  
 OFFICE OF WATER RESOURCES  
 FRESHWATER WETLANDS PROGRAM  
 APPROVED WITH CONDITIONS  
 AS SPECIFIED IN THE LETTER OF APPROVAL  
 DATED DEC - 9 2021 FILE # 21-0211  
 NO CHANGES ALLOWED WITHOUT PRIOR APPROVAL  
 APPROVED PLANS MUST BE AT CONSTRUCTION SITE  
*Mark D. Weneck*



REFERENCE

- 1. PROJECT LOCATION: BOURNE MILLS, 1 MILL STREET, TIVERTON, RI 02878. ASSESSOR'S MAP 102, LOTS 400 AND 401.
2. EXISTING CONDITIONS MAPPING TAKEN FROM:
- PLAN ENTITLED "ALTAACSM" PREPARED BY NORTHEAST ENGINEERS AND CONSULTANTS, INC., CREATED IN 2007. WETLANDS WERE ORIGINALLY DELINEATED BY NATURAL RESOURCE SERVICES, INC. IN APRIL 2006.
- TOWN OF TIVERTON FINAL PLAN ENTITLED "BOURNE MILL REDEVELOPMENT" AND ASSOCIATED CONSTRUCTION SKETCHES PREPARED BY PARE CORPORATION DATED JULY 2008.
- TOPOGRAPHIC DATA TAKEN FROM LIMITED FIELD MEASUREMENTS PERFORMED BY PARE ON AUGUST 24, 2021. THE VERTICAL AND HORIZONTAL DATUM ARE BASED ON AN ASSUMED DATUM ESTABLISHED IN THE FIELD AND REFERENCED TO THE NVD29 DATUM ESTABLISHED ON THE 2006 ALTAACSM SURVEY PREPARED BY NORTHEAST ENGINEERS.
- AS-BUILT SEWER SURVEY PREPARED BY MLC SURVEY, INC DATED DECEMBER 23, 2009.
3. WETLAND FLAGS IDENTIFYING WETLAND RESOURCE AREAS WERE PLACED BY PARE CORPORATION ON SEPTEMBER 1, 2021 AND LOCATED BY PARE CORPORATION USING A GPS DEVICE.

GENERAL NOTES

- 1. PER AVAILABLE RIDEM MAPPING THE PROJECT IS LOCATED OUTSIDE A NATURAL HERITAGE AREA.
2. THE STATE OF RHODE ISLAND STANDARD SPECIFICATIONS FOR ROAD AND BRIDGE CONSTRUCTION, AMENDED MARCH 2018 WITH ALL REVISIONS AND ADDENDA, AND THE RHODE ISLAND STANDARD DETAILS ARE MADE A PART HEREOF AS FULLY AND COMPLETELY AS IF ATTACHED HERETO. ALL WORK SHALL MEET OR EXCEED THE RHODE ISLAND STANDARD SPECIFICATIONS FOR ROAD AND BRIDGE CONSTRUCTION, WITH LATEST REVISIONS. THE LATEST REVISION OF THE STANDARD SPECIFICATIONS MAY BE OBTAINED AT THE RHODE ISLAND DEPARTMENT OF TRANSPORTATION.
3. THE CONTRACTOR SHALL MAKE ALL NECESSARY CONSTRUCTION NOTIFICATIONS AND APPLY FOR AND OBTAIN ALL NECESSARY CONSTRUCTION PERMITS, PAY ALL FEES AND POST ALL BONDS ASSOCIATED WITH THE SAME, AND COORDINATE WITH THE ENGINEER AND OWNER'S REPRESENTATIVE AS REQUIRED.
4. THE CONTRACTOR SHALL BE SOLELY RESPONSIBLE FOR JOB SITE SAFETY. THE CONTRACTOR SHALL PROVIDE TEMPORARY FENCING AND/OR BARRIERS AROUND ALL OPEN EXCAVATED AREAS IN ACCORDANCE WITH OSHA FEDERAL, STATE, AND LOCAL REQUIREMENTS.
5. THE CONTRACTOR SHALL BE RESPONSIBLE FOR VERIFYING THAT THE PROPOSED IMPROVEMENTS SHOWN ON THE PLANS DO NOT CONFLICT WITH ANY KNOWN EXISTING OR OTHER PROPOSED IMPROVEMENTS. IF ANY CONFLICTS ARE DISCOVERED, THE CONTRACTOR SHALL NOTIFY THE OWNER AND THE ENGINEER PRIOR TO INSTALLATION OF ANY PORTION OF THE SITE WORK WHICH WOULD BE AFFECTED. NO FIELD ADJUSTMENTS IN THE LOCATION OF SITE ELEMENTS SHALL BE MADE WITHOUT THE ENGINEER'S APPROVAL.
6. IF ANY DEVIATION OR ALTERATION OF THE WORK PROPOSED ON THESE DRAWINGS IS REQUIRED, THE CONTRACTOR SHALL IMMEDIATELY CONTACT AND COORDINATE ANY DEVIATIONS WITH THE ENGINEER AND OWNER.
7. ANY AREA OUTSIDE OF THE LIMIT OF WORK THAT IS DISTURBED SHALL BE RESTORED TO ITS ORIGINAL CONDITION AT NO ADDITIONAL COST TO THE OWNER.
8. ALL SITE WORK SHALL MEET OR EXCEED THE SITE WORK SPECIFICATIONS PREPARED FOR THIS PROJECT.
9. ALL SIGNS SHALL BE REFLECTORIZED TYPE III SHEETING AND CONFORM WITH THE MANUAL OF UNIFORM TRAFFIC CONTROL DEVICES (MUTCD), LATEST REVISION.
10. NO EXCAVATION SHALL BE DONE UNTIL UTILITY COMPANIES ARE PROPERLY NOTIFIED IN ADVANCE. NOTE THAT NOT ALL EXISTING UNDERGROUND UTILITIES ARE SHOWN. IT IS THE CONTRACTOR'S RESPONSIBILITY TO CONTACT ALL RESPECTIVE UTILITY COMPANIES TO VERIFY AND LOCATE EXISTING UTILITIES.
11. THERE IS AN EXISTING ELUR ON THE ESTABLISHED PROPERTY. SOIL MANAGEMENT AND DEWATERING SHALL BE DONE IN ACCORDANCE WITH AN APPROVED SOIL MANAGEMENT PLAN PER THE RIDEM OFFICE OF WASTE MANAGEMENT REGULATIONS.

LAYOUT NOTES

- 1. ALL LINES ARE PERPENDICULAR OR PARALLEL TO THE LINES FROM WHICH THEY ARE MEASURED UNLESS OTHERWISE INDICATED.
2. ACCESSIBLE RAMPS SHALL BE CONSTRUCTED PER THE AMERICANS WITH DISABILITIES ACT (ADA) ACCESSIBILITY GUIDELINES.
3. PRIOR TO COMMENCING WORK, THE CONTRACTOR SHALL PERFORM BENCHMARK FIELD LEVEL VERIFICATION AND COORDINATE LAYOUT CHECK. THE CONTRACTOR SHALL CONTACT PARE CORPORATION IF ANY DISCREPANCIES ARE FOUND.
4. DIMENSIONS OF PARKING SPACES AND DRIVEWAYS ARE FROM FACE OF CURB TO FACE OF CURB. DIMENSIONS FROM BUILDING ARE FROM FACE OF BUILDING TO FACE OF CURB.
5. ALIGN WALKWAYS ON DOORWAYS THEY SERVE TO PROVIDE MINIMUM REQUIRED MANEUVERING CLEARANCE IN ACCORDANCE WITH THE AMERICAN WITH DISABILITIES ACT (ADA) ACCESSIBILITY GUIDELINES.

DEMOLITION NOTES

- 1. THE CONTRACTOR SHALL COORDINATE ALL DEMOLITION OF STRUCTURES, PAVEMENT AND CONCRETE MATERIALS, AND UTILITIES WITH APPROPRIATE PROPOSED SITE GENERAL, GRADING, UTILITY, AND LANDSCAPING DRAWINGS.
2. ALL NOTED UTILITIES TO BE REMOVED AND DISPOSED OF, RELOCATED OR CAPPED REPRESENT ALL KNOWN SITE CONDITIONS TO BE DEMOLISHED. THE CONTRACTOR SHALL COORDINATE ALL UNFORESEEN CONDITIONS WITH THE PROJECT ENGINEER, OWNER AND/OR RESPECTIVE UTILITY COMPANIES PRIOR TO PROCEEDING WITH WORK.
3. WATER, SEWER, DRAINAGE, GAS, AND OTHER SITE UTILITIES SERVICING THE EXISTING FACILITIES ARE TO REMAIN ACTIVE THROUGHOUT CONSTRUCTION. THERE SHALL BE NO INTERRUPTION OF UTILITY SERVICES DURING THE CONSTRUCTION OPERATION WITHOUT APPROVAL FROM THE OWNER.

GRADING AND UTILITY NOTES

- 1. UNDERGROUND UTILITIES DEPICTED WERE COMPILED FROM AVAILABLE RECORD PLANS AND SHALL BE CONSIDERED APPROXIMATE ONLY. BEFORE COMMENCING SITE WORK IN ANY AREA, CONTACT "DIG SAFE" AT 1-888-DIG-SAFE (1-888-344-7233) TO ACCURATELY LOCATE UNDERGROUND UTILITIES. ANY DAMAGE TO EXISTING UTILITIES OR STRUCTURES DEPICTED OR NOT DEPICTED ON THE PLANS SHALL BE THE CONTRACTOR'S RESPONSIBILITY. COSTS TO REPAIR SUCH DAMAGES SHALL BE THE CONTRACTOR'S RESPONSIBILITY. NO EXCAVATION SHALL BE DONE UNTIL UTILITY COMPANIES ARE PROPERLY NOTIFIED.
2. ALL WORK PERFORMED AND ALL MATERIALS FURNISHED SHALL CONFORM WITH THE LINES AND GRADES ON THE PLANS AND SITE WORK SPECIFICATIONS.
3. AT ALL LOCATIONS WHERE EXISTING CURBING OR PAVEMENT ABUT NEW CONSTRUCTION, THE EDGE OF THE EXISTING CURB OR PAVEMENT SHALL BE SAWCUT TO A CLEAN, SMOOTH EDGE. BLEND NEW PAVEMENT AND CURBS SMOOTHLY INTO EXISTING BY MATCHING LINES, GRADES AND JOINTS.
4. ALL UTILITY COVERS, GRATES, ETC. SHALL BE ADJUSTED TO BE FLUSH WITH THE SURROUNDING SURFACE OR PAVEMENT FINISH GRADE. RIM ELEVATIONS OF STRUCTURES AND MANHOLES ARE APPROXIMATE. FINAL ELEVATIONS ARE TO BE SET FLUSH AND CONSISTENT WITH THE GRADING PLANS.
5. THE CONTRACTOR SHALL MAKE ALL ARRANGEMENTS FOR THE ALTERATION OF PRIVATE UTILITIES BY THE UTILITY COMPANIES, AS REQUIRED.
6. WHERE AN EXISTING UTILITY IS FOUND TO CONFLICT WITH THE PROPOSED WORK, THE LOCATION, ELEVATION AND SIZE OF THE UTILITY SHALL BE ACCURATELY DETERMINED WITHOUT DELAY BY THE CONTRACTOR AND THE INFORMATION SHALL BE PROVIDED ON A SKETCH TO SCALE OF THE EXISTING UTILITY WITH TIES TO KNOWN POINTS, PHOTOS AND FURNISHED TO THE ENGINEER FOR RESOLUTION.
7. THE CONTRACTOR SHALL PROTECT ALL UNDERGROUND DRAINAGE, SEWER AND UTILITY FACILITIES FROM EXCESSIVE VEHICULAR LOADS DURING CONSTRUCTION. ANY DAMAGE TO THESE FACILITIES RESULTING FROM CONSTRUCTION LOADS SHALL BE RESTORED TO ORIGINAL CONDITION AT NO ADDITIONAL COST TO THE OWNER.
8. GAS, ELECTRIC, AND COMMUNICATIONS ROUTING ARE SUBJECT TO REVIEW AND APPROVAL BY APPROPRIATE UTILITY COMPANIES.
9. DURING CONSTRUCTION OPERATIONS, THE CONTRACTOR SHALL PROTECT EXISTING UTILITIES BY PROVIDING TEMPORARY SUPPORTS OR SHEETING AS REQUIRED AT NO ADDITIONAL COST TO THE OWNER.
10. ALL GRAVITY SANITARY PIPING SHALL BE SDR-35 PVC. ALL SEWER CONSTRUCTION SHALL CONFORM TO THE REQUIREMENTS OF THE TIVERTON WASTEWATER DISTRICT.
11. ALL WATER LINE BENDS AND TEES SHALL BE REINFORCED WITH THRUST BLOCKS. ALL WATER DISTRIBUTION PIPING AND FITTINGS MUST ADHERE TO THE NORTH TIVERTON FIRE DISTRICT AND THE CITY OF FALL RIVER WATER DIVISION SPECIFICATIONS AND SHALL BE INSPECTED BEFORE, DURING, AND AFTER CONSTRUCTION PRIOR TO TAPPING THE SERVICE MAIN. THE CONTRACTOR SHALL COORDINATE AND CONFIRM ALL WATER DISTRIBUTION MATERIAL PRODUCTS WITH THE NORTH TIVERTON FIRE DISTRICT AND THE CITY OF FALL RIVER WATER DIVISION PRIOR TO ORDERING OR PURCHASING PRODUCTS.
12. EXCAVATION REQUIRED WITHIN THE PROXIMITY OF EXISTING UTILITY LINES SHALL BE DONE BY HAND. CONTRACTOR SHALL REPAIR ANY DAMAGE TO EXISTING UTILITY LINES OR STRUCTURES INCURRED DURING CONSTRUCTION OPERATIONS AT NO ADDITIONAL COST TO THE OWNER.
13. PITCH EVENLY BETWEEN SPOT GRADES. ALL PAVED AREAS MUST PITCH TO DRAIN AT A MIN. OF 1/8" PER FOOT UNLESS SPECIFIED OTHERWISE.
14. THE PROPOSED WALKWAYS SHALL HAVE A MAXIMUM CROSS SLOPE OF 2% AND A MAXIMUM RUNNING SLOPE OF 5% AS SHOWN ON CONSTRUCTION DETAILS AND GRADING PLAN.

EROSION AND SEDIMENTATION CONTROL NOTES - RHODE ISLAND

- 1. THE CONTRACTOR AND RELEVANT SUBCONTRACTORS SHALL READ AND UNDERSTAND THE RIDES GENERAL PERMIT FOR STORMWATER DISCHARGES ASSOCIATED WITH CONSTRUCTION ACTIVITY (GENERAL PERMIT) AND THE SITE SPECIFIC SOIL EROSION AND SEDIMENT CONTROL PLAN (SESC) PREPARED FOR THE PROJECT. ALL EROSION CONTROLS SHALL BE IN ACCORDANCE WITH THE RHODE ISLAND SOIL EROSION AND SEDIMENT CONTROL HANDBOOK, LATEST REVISION.
2. THE CONTRACTOR SHALL BECOME FAMILIAR WITH THE CONDITIONS ISSUED FOR THE PROJECT BY RIDEM AND BE RESPONSIBLE FOR CONFORMANCE WITH ALL PERMIT REQUIREMENTS AND CONSTRUCTION DOCUMENTS.
3. THE CONTRACTOR SHALL BE RESPONSIBLE FOR ESTABLISHING OR INSTALLING ALL TEMPORARY SEDIMENT AND EROSION CONTROLS AS SHOWN ON THESE PLANS AND SHALL MAINTAIN ALL EROSION CONTROL MEASURES AS NECESSARY DURING THE ENTIRE CONSTRUCTION PERIOD.
4. ANTI-TRACKING PADS (R.I. STD. DETAIL 9.8.0) SHALL BE PROVIDED AT ALL POINTS OF VEHICULAR INGRESS AND EGRESS ON THE CONSTRUCTION SITE AND SHALL BE MAINTAINED TO LIMIT TRACKING OR FLOWING OF SEDIMENT ONTO PUBLIC ROADS.
5. EROSION CONTROL BARRIERS SHALL BE INSTALLED AS SHOWN ON THE EROSION CONTROL PLAN PRIOR TO COMMENCEMENT OF CONSTRUCTION OPERATIONS AND SHALL REMAIN UNTIL ALL UPSTREAM AREAS ARE STABILIZED.
6. SOIL EROSION AND SEDIMENTATION CONTROL MEASURES SHALL BE INSPECTED AND MAINTAINED ON A WEEKLY BASIS AND AFTER EACH STORM EVENT OF 0.25 INCH OR GREATER DURING CONSTRUCTION TO ENSURE THAT CHANNELS, DITCHES AND PIPES ARE CLEAR OF DEBRIS AND THAT THE EROSION CONTROL BARRIERS ARE INTACT. IDENTIFIED DEFICIENCIES SHALL BE CORRECTED IMMEDIATELY.
7. DUST SHALL BE CONTROLLED BY WATERING OR OTHER APPROVED METHODS AS NECESSARY, OR AS DIRECTED BY THE OWNER OR OWNER'S REPRESENTATIVE.
8. THE CONTRACTOR SHALL CLEAN AND MAINTAIN EROSION CONTROL BARRIER WHEN SEDIMENT ACCUMULATES TO ONE HALF THE HEIGHT OF THE BARRIER. MATERIAL COLLECTED FROM THE SEDIMENTATION BARRIERS SHALL BE REMOVED AS NECESSARY AND DISPOSED IN AN UPLAND AREA.
9. THE CONTRACTOR SHALL SCHEDULE HIS WORK TO ALLOW THE FINISHED SUBGRADE ELEVATIONS TO DRAIN PROPERLY WITHOUT PONDING. SPECIFICALLY, ALLOW WATER TO ESCAPE WHERE PROPOSED CURB MAY RETAIN RUNOFF PRIOR TO APPLICATION OF SURFACE PAVING. PROVIDE TEMPORARY POSITIVE DRAINAGE, AS REQUIRED, TO STABILIZED DISCHARGE POINTS.
10. INSTALLATION OF THE EROSION CONTROL BARRIERS AS ILLUSTRATED IS INTENDED TO REPRESENT THE MINIMUM SEDIMENTATION CONTROL FACILITIES NECESSARY TO MEET ANTICIPATED SITE CONDITIONS. ADDITIONAL EROSION CONTROL MEASURES SHALL BE IMPLEMENTED AS CONDITIONS WARRANT OR AS DIRECTED BY THE OWNER OR OWNER'S REPRESENTATIVE.
11. REQUIRED SEDIMENTATION CONTROL FACILITIES MUST BE PROPERLY ESTABLISHED, CLEARLY VISIBLE AND IN OPERATION PRIOR TO INITIATING ANY LAND CLEARING ACTIVITY AND/OR OTHER CONSTRUCTION RELATED WORK. SUCH FACILITIES SHALL REPRESENT THE LIMIT OF WORK. WORKERS SHALL BE INFORMED THAT NO CONSTRUCTION ACTIVITY IS TO OCCUR BEYOND THE LIMIT OF WORK AT ANY TIME THROUGHOUT THE CONSTRUCTION PERIOD.
12. THE CONTRACTOR SHALL MAINTAIN A SUFFICIENT RESERVE OF VARIOUS EROSION CONTROL MATERIALS ONSITE AT ALL TIMES FOR EMERGENCY PURPOSES OR ROUTINE MAINTENANCE.
13. EXISTING AND NEWLY INSTALLED CATCH BASINS AND STORM DRAIN INLETS SHALL BE PROTECTED WITH APPROPRIATE TEMPORARY INLET PROTECTION IN ACCORDANCE WITH THE RHODE ISLAND SOIL EROSION AND SEDIMENT CONTROL HANDBOOK.
14. DEWATERING WASTE WATERS PUMPED FROM EXCAVATIONS SHALL BE CONVEYED BY HOSE TO AN UPLAND AREA AND DISCHARGED INTO STRAW BALE CORRALS OR SEDIMENTATION BAGS. CONTAMINATED DEWATERING WASTE SHALL BE DISCHARGED IN ACCORDANCE WITH AN APPROVED PLAN IN ACCORDANCE WITH RIDEM REGULATIONS.
15. THE CONTRACTOR SHALL NOT REMOVE ANY TEMPORARY SEDIMENT CONTROL BARRIERS UNTIL THE CONTRIBUTING DRAINAGE AREA HAS BEEN PERMANENTLY STABILIZED.
16. CONSTRUCTION SITE WASTE MATERIALS SHALL BE PROPERLY CONTAINED ONSITE AND DISPOSED OFF SITE AT A LOCATION IN ACCORDANCE WITH THE LOCAL AND STATE REGULATIONS.
17. RIP-RAP OR OTHER ENERGY DISSIPATORS SHALL BE USED WHERE NECESSARY TO PREVENT SCOUR.
18. ALL DISTURBED AREAS SHALL BE STABILIZED WITHIN 14 DAYS UPON COMPLETION OF WORK IN THAT AREA.
19. ALL DRAINAGE STRUCTURES SHALL BE CLEARED OF ACCUMULATED SEDIMENT PRIOR TO ACCEPTANCE OF FINAL PROJECT.
20. NEWLY VEGETATED AREAS SHALL BE MAINTAINED REGULARLY TO ENSURE STABLE VEGETATED SURFACES.
21. EROSION AND SEDIMENTATION CONTROLS SHALL BE UTILIZED AS SHOWN ON THE PLANS. POTENTIAL EROSION AND SEDIMENTATION PROBLEMS ASSOCIATED WITH THE CONSTRUCTION OF THE PROJECT SHALL BE AVOIDED THROUGH THE PROJECT SCHEDULING AND THE USE OF APPROPRIATE STANDARD CONTROLS (RHODE ISLAND SOIL EROSION AND SEDIMENTATION CONTROL HANDBOOK) AS ILLUSTRATED ON THE PROJECT PLANS.
22. WHERE EROSION CONTROLS ARE NEEDED ON IMPERVIOUS SURFACES, THE CONTRACTOR SHALL PROVIDE SAND BAG EROSION CONTROL BARRIER.

STORMWATER MANAGEMENT SYSTEM INSPECTION AND MAINTENANCE NOTES

DURING CONSTRUCTION (CONTRACTOR'S RESPONSIBILITY)

- 1. THE CONTRACTOR SHALL REMOVE SEDIMENT AND DEBRIS FROM ALL CATCH BASINS, MANHOLES, AND THE DRAINAGE SYSTEM ON A ROUTINE BASIS, IMMEDIATELY FOLLOWING SITE STABILIZATION, AND PRIOR TO PROJECT COMPLETION AND ACCEPTANCE.
2. THE CLOSED DRAINAGE SYSTEM AND ASSOCIATED STRUCTURES SHALL BE CLEANED AND FLUSHED BY THE CONTRACTOR AT THE COMPLETION OF CONSTRUCTION, AND THE CONTRACTOR SHALL BE RESPONSIBLE FOR INSPECTION AND MAINTENANCE OF THE DRAINAGE SYSTEM UNTIL ACCEPTANCE OF THE SYSTEM BY THE ENGINEER AND THE TOWN OF TIVERTON. FOLLOWING ACCEPTANCE OF THE PROPOSED DRAINAGE SYSTEM, THE OWNER OF THE SITE SHALL BE RESPONSIBLE FOR THE LONG-TERM INSPECTION AND MAINTENANCE OF THE DRAINAGE SYSTEM.
3. ANY ACCUMULATION OF PONDING WATER IN AREAS WITHIN THE LIMITS OF DISTURBANCE, OTHER THAN DESIGNATED AREAS, SHALL BE REMOVED ACCORDINGLY AND PREVENTED IN THE FUTURE.

POST CONSTRUCTION (OWNER'S RESPONSIBILITY)

- 1. TRASH, LITTER, SEDIMENT AND OTHER DEBRIS SHALL BE REMOVED FROM ANY STORMWATER MANAGEMENT SYSTEM FACILITY (INCLUDING BUT NOT LIMITED TO CATCH BASINS, MANHOLES, INLET, OUTLET AND DIVERSION STRUCTURES, AND STORMWATER BEST MANAGEMENT PRACTICES (BMPs)) A MINIMUM OF TWO TIMES PER YEAR, PREFERABLY IN THE SPRING AND FALL.
2. THE PARKING LOT AND ENTRY DRIVE SHALL BE SWEEP BY THE OWNER AS EARLY AS POSSIBLE EVERY SPRING AND ONCE IN THE FALL TO REMOVE SEDIMENTS.
3. ALL CLEANING AND MAINTENANCE OF STORMWATER MANAGEMENT SYSTEMS POST-CONSTRUCTION SHALL BE THE RESPONSIBILITY OF THE OWNER.

SEDIMENT FOREBAY INSPECTION, MAINTENANCE, AND REPAIR NOTES

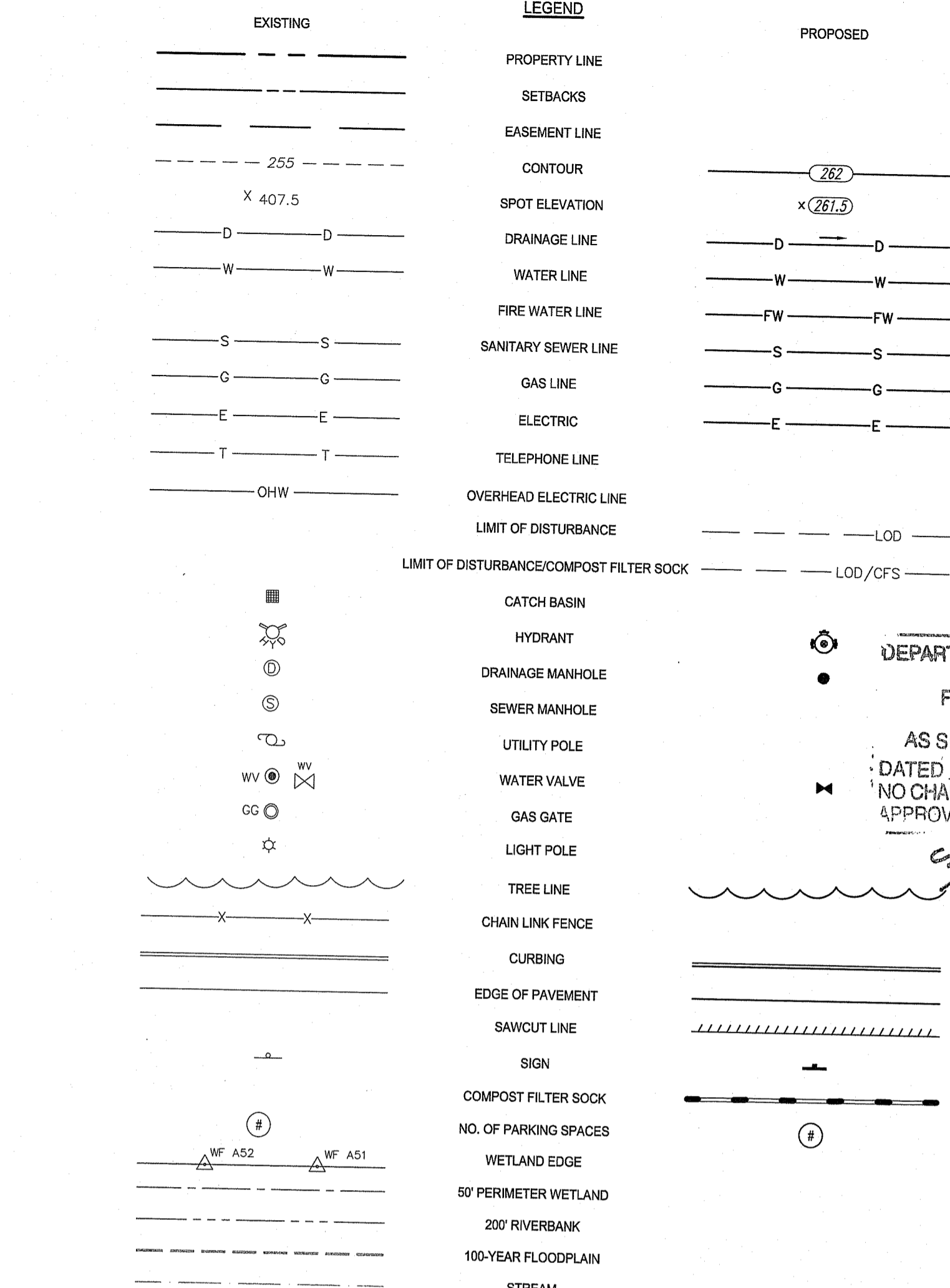
- 1. SEDIMENT FOREBAY SHALL BE INSPECTED A MINIMUM OF TWO TIMES PER YEAR AND AFTER EVERY STORM OF 2.7" INCH OR GREATER FOR TRASH, DEBRIS, SEDIMENT, EROSION, STANDING WATER, AND OVERALL PERFORMANCE. DEFECTS SHALL BE REPAIRED BY THE OWNER.
2. SEDIMENT FOREBAYS SHALL BE CLEANED IF SEDIMENT REACHES HALF THE DESIGN DEPTH.
3. SEDIMENT FOREBAY CHECK DAMS SHALL BE REPLACED IF DRAWDOWN TIMES WITHIN THE SEDIMENT FOREBAY EXCEED 48 HOURS FOLLOWING THE STORM EVENT.
4. ALL SEDIMENTS REMOVED SHALL BE DISPOSED OF AT AN APPROVED AND PERMITTED LOCATION.
5. VEGETATION SHALL NOT EXCEED 18" IN HEIGHT IN THE SEDIMENT FOREBAYS.

DETENTION BASIN INSPECTION, MAINTENANCE, AND REPAIR NOTES

- 1. SEDIMENT SHALL BE REMOVED FROM THE DETENTION BASIN WHEN THE SEDIMENT VOLUME EXCEEDS 10 PERCENT OF THE TOTAL BASIN VOLUME. THE REMOVED SEDIMENT SHALL BE DISPOSED OF AT AN APPROVED AND PERMITTED LOCATION.
2. FOLLOWING FIRST 6 MONTHS AFTER CONSTRUCTION
- INSPECT INFILTRATION PRACTICES AFTER FIRST TWO RAINFALL EVENTS OF 1" OR MORE.
3. BI-ANNUALLY
- INSPECT DETENTION BASIN A MINIMUM OF TWO TIMES PER YEAR, PREFERABLY ONCE IN APRIL AND ONCE IN OCTOBER.
- MOW SIDE SLOPES AND BOTTOM OF DETENTION BASIN A MINIMUM OF TWO TIMES PER YEAR. THE VEGETATION SHALL NOT EXCEED 18" IN HEIGHT.
4. QUARTERLY
- THE DETENTION BASIN OUTLET STRUCTURES AND ALL OUTFLOW CHANNELS SHOULD BE INSPECTED QUARTERLY BY THE OWNER.

WET VEGETATED TREATMENT SYSTEM (WVTS) INSPECTION, MAINTENANCE, AND REPAIR NOTES

- 1. DURING THE SIX MONTHS IMMEDIATELY AFTER CONSTRUCTION, FILTER PRACTICES SHALL BE INSPECTED FOLLOWING AT LEAST THE FIRST TWO PRECIPITATION EVENTS OF AT LEAST 1.0 INCH TO ENSURE THAT THE SYSTEM IS FUNCTIONING PROPERLY. THEREAFTER, INSPECTIONS SHALL BE CONDUCTED ON AN ANNUAL BASIS AND AFTER STORM EVENTS OF GREATER THAN OR EQUAL 2.7" FOR TRASH, DEBRIS, SEDIMENT, EROSION, STANDING WATER, AND OVERALL PERFORMANCE.
2. TRASH AND DEBRIS SHALL BE REMOVED FROM THE FOREBAY AND WVTS SYSTEM AS NECESSARY.
3. SEDIMENT REMOVAL IN THE FOREBAY SHALL OCCUR EVERY 5 YEARS OR AFTER 50% OF TOTAL FOREBAY CAPACITY HAS BEEN LOST, WHICHEVER OCCURS FIRST.
4. MINIMUM VEGETATIVE COVERAGE OF 50% IS NOT ACHIEVED IN THE PLANTED AREAS AFTER THE SECOND GROWING SEASON, A REINFORCEMENT PLANTING IS REQUIRED.
5. SEDIMENT AND ORGANIC BUILD-UP SHALL BE REMOVED FROM A GRAVEL WVTS EVERY 2 YEARS, AS NEEDED. SILT/SEDIMENT SHALL BE REMOVED FROM THE SYSTEM BOTTOM WHEN THE ACCUMULATION EXCEEDS ONE INCH. WHEN THE FILTERING CAPACITY OF THE AREA DIMINISHES SUBSTANTIALLY (I.E., WHEN WATER PONDS ON THE SURFACE OF THE FILTER BED FOR MORE THAN 48 HOURS), THE TOP FEW INCHES OF DISCOLORED MATERIAL SHALL BE REMOVED AND SHALL BE REPLACED WITH FRESH MATERIAL. THE REMOVED SEDIMENTS SHALL BE DISPOSED IN AN ACCEPTABLE MANNER AT AN APPROVED AND PERMITTED LOCATION.
6. OWNER SHALL MOW GRASS ALONG WITHIN WVTS A MINIMUM OF 3 TIMES ANNUALLY TO MAINTAIN A MAXIMUM GRASS HEIGHT OF 12". VEGETATION IN THE SEDIMENT FOREBAY SHALL BE LIMITED TO A HEIGHT OF 18".
7. REMOVE ACCUMULATED SEDIMENT FROM THE WVTS TWICE ANNUALLY, IN LATE SPRING OR EARLY FALL, IF SEDIMENT EXCEEDS 1".

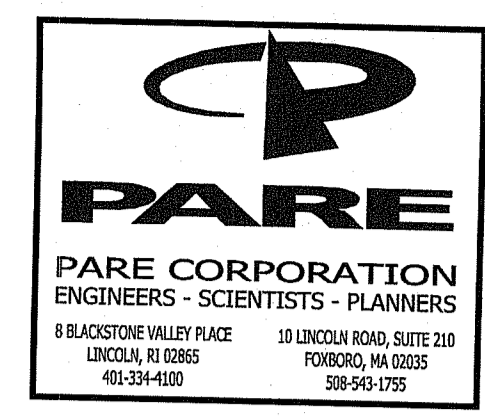


LEGEND: BOL = BOLLARD, CE = CONSTRUCTION ENTRANCE, CFS = COMPOST FILTER SOCK (SEE DETAIL), CLF = CHAIN LINK FENCE, CM = SAWCUT AND MATCH, CCP = CEMENT CONCRETE DUMPSTER PAD, CTE = CONNECT TO EXISTING, CW = CROSS WALK (SEE DETAIL), DFP = REMOVE AND DISPOSE FLEXIBLE PAVMENT, DWP = DETECTABLE WARNING PAVEMENT (SEE DETAIL), ETR = EXISTING TO REMAIN. PROTECT DURING CONSTRUCTION, HMA = HOT MIXED ASPHALT PAVEMENT (SEE DETAIL), HPR = HEADWALL PROTECTION RACK, PCHW = PRECAST CONCRETE HEADWALL, PM = PAVEMENT MARKING, RLS = RIPRAP LEVEL SPREADER, RRA = RIPRAP APRON, RRE = RIPRAP EDGE, RS = RIPRAP SPILLWAY, RTAD = REFER TO ARCHITECTURAL DRAWINGS, RTED = REFER TO ELECTRICAL DRAWINGS, RTL = REFER TO LANDSCAPE DRAWINGS, RTPD = REFER TO PLUMBING DRAWINGS, RSD = REMOVE AND DISPOSE, SFCD = SEDIMENT FOREBAY CHECK DAM (SEE DETAIL), SHP = HANDICAP PARKING PAVEMENT MARKING (SEE DETAIL), SM = SEDIMENT MARKER, 4W = 4" SOLID WHITE EPOXY RESIN PAVEMENT MARKING, 12W = 12" SOLID WHITE EPOXY RESIN PAVEMENT MARKING. RIDOT STANDARDS LEGEND: 23.0 = PRECAST CONCRETE FLARED END SECTION - R.I. STD. 2.3.0, 71.0 = PRECAST CONCRETE CURB - R.I. STD. 7.1.0, 71.1 = 3'-0" PRECAST CONCRETE TRANSITION CURB - R.I. STD. 7.1.1, 71.2 = 6'-0" PRECAST CONCRETE TRANSITION CURB - R.I. STD. 7.1.2, 71.5 = PRECAST CONCRETE INLET STONE (FOR SQUARE CATCH BASIN) - R.I. STD. 7.1.5, 9.9.0 = CONSTRUCTION ACCESS - R.I. STD. 9.9.0, 43.1.0M = CEMENT CONCRETE SIDEWALK (MODIFIED) - R.I. STD. 43.1.0M, 43.3.0 = WHEELCHAIR RAMP - R.I. STD. 43.3.0, 43.3.1M = WHEELCHAIR RAMP FOR LIMITED RIGHT-OF-WAY AREAS - R.I. STD. 43.3.1M, 48.1.0M = DETECTABLE WARNING SYSTEM (MODIFIED) - R.I. STD. 48.1.0M.

ABBREVIATIONS: ADA = AMERICANS WITH DISABILITIES ACT, ASSF = AREA SUBJECT TO STORM FLOWAGE, BM = BENCHMARK, BMP = BEST MANAGEMENT PRACTICE, BIT. = BITUMINOUS, BOT. = BOTTOM, BC = BOTTOM OF CURB (FINISHED GRADE ON LOW SIDE OF CURB) TO CATCH BASIN, BWP = BOTTOM OF STAIR (FINISHED GRADE AT BOTTOM STAIR), BW = BOTTOM OF WALL (FINISHED GRADE ON LOW SIDE OF WALL), CI = CAST IRON, CB = CATCH BASIN, 4" DIA. UNLESS OTHERWISE NOTED, CLDI = CEMENT-LINED DUCTILE IRON, CL = CLASS, CLSM = CONTROLLED LOW STRENGTH MATERIAL, CO = CLEANOUT, CONC. = CONCRETE, CC = CONCRETE CURB, VERTICAL, DEMO = DEMOLITION, DIA = DIAMETER, DIV. = DIVERSION, DYL = DOUBLE YELLOW LINE, DMH = DRAIN MANHOLE, EOP = EDGE OF PAVEMENT, ELEV. = ELEVATION, EX. EXIST. = EXISTING, EXCB = EXISTING CATCH BASIN, EXDMH = EXISTING DRAIN MANHOLE, FFE = FINISH FLOOR ELEVATION, FT = FOOT, FND. = FOUND, GTD = GRADE TO DRAIN, GRAN. = GRANITE, HDPE = HIGH DENSITY POLYETHYLENE PIPE, HMA = HOT MIX ASPHALT, HYD. = HYDRANT, I.D. = INNER DIAMETER, INV. = INVERT, LOD = LIMIT OF DISTURBANCE, LP = LOW POINT, MUTCD = MANUAL OF UNIFORM TRAFFIC CONTROL DEVICES, LATEST EDITION, MAX. = MAXIMUM, MIN. = MINIMUM, MON. = MONITORING, NTS, N.T.S. = NOT TO SCALE, OSHA = OCCUPATIONAL SAFETY AND HEALTH ADMINISTRATION, OWS = OIL WATER SEPARATOR, OCS = OUTLET CONTROL STRUCTURE, PERP. = PERFORATED, PE = POLYETHYLENE, PVC = POLYVINYL CHLORIDE, R-X = RADIUS (IN FEET), RCP = REINFORCED CONCRETE PIPE, RIDEM = RHODE ISLAND DEPARTMENT OF ENVIRONMENTAL MANAGEMENT, RIDOT = RHODE ISLAND DEPARTMENT OF TRANSPORTATION, RHP = RHODE ISLAND HIGHWAY PLAT, RIPDES = RHODE ISLAND POLLUTION DISCHARGE ELIMINATION SYSTEM, R.I. STD. = RHODE ISLAND STANDARD, SMH = SEWER MANHOLE, SWL = SINGLE SOLID WHITE LINE, SESC = SOIL EROSION AND SEDIMENT CONTROL, SR = STANDARD DIMENSIONAL RATIO, TD = TEMPORARY DIVERSION, TST = TEMPORARY SAFETY TRAP, TSW = TEMPORARY SWALE, TP = TEST PIT, TC = TOP OF CURB, TS = TOP OF STAIR (FINISHED GRADE OF TOP STAIR), TOS = TOP OF STONE, TW = TOP OF WALL, TYP. = TYPICAL, UP = UTILITY POLE, VCC = VERTICAL GRANITE CURB, VC = VITRIFIED CLAY, WPM = WATER PAINT MARK, w/ = WITH, YD = YARD DRAIN.

DEPARTMENT OF ENVIRONMENTAL MANAGEMENT: OFFICE OF WATER RESOURCES FRESHWATER WETLANDS PROGRAM APPROVED WITH CONDITIONS AS SPECIFIED IN THE LETTER OF APPROVAL DATED DEC - 9 2021 FILE # 21-0271 NO CHANGES ALLOWED WITHOUT PRIOR APPROVAL APPROVED PLANS MUST BE AT CONSTRUCTION SITE

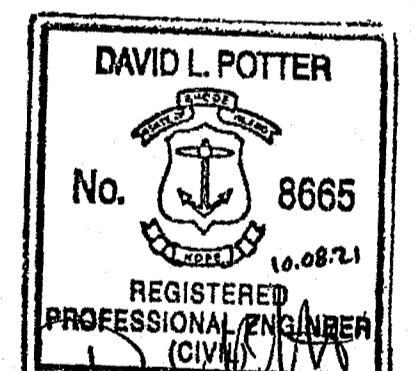
Cynthia D. Sennek



OWNER: BOURNE MILLS, LLC C/O THE ARMORY REVIVAL COMPANY 334 BROADWAY PROVIDENCE, RI 02909

SCALE ADJUSTMENT GUIDE: BAR IS ONE INCH ON ORIGINAL DRAWING

BOURNE MILL - PHASE III AP 102, LOTS 400 & 401 1 MILL STREET TIVERTON, RHODE ISLAND



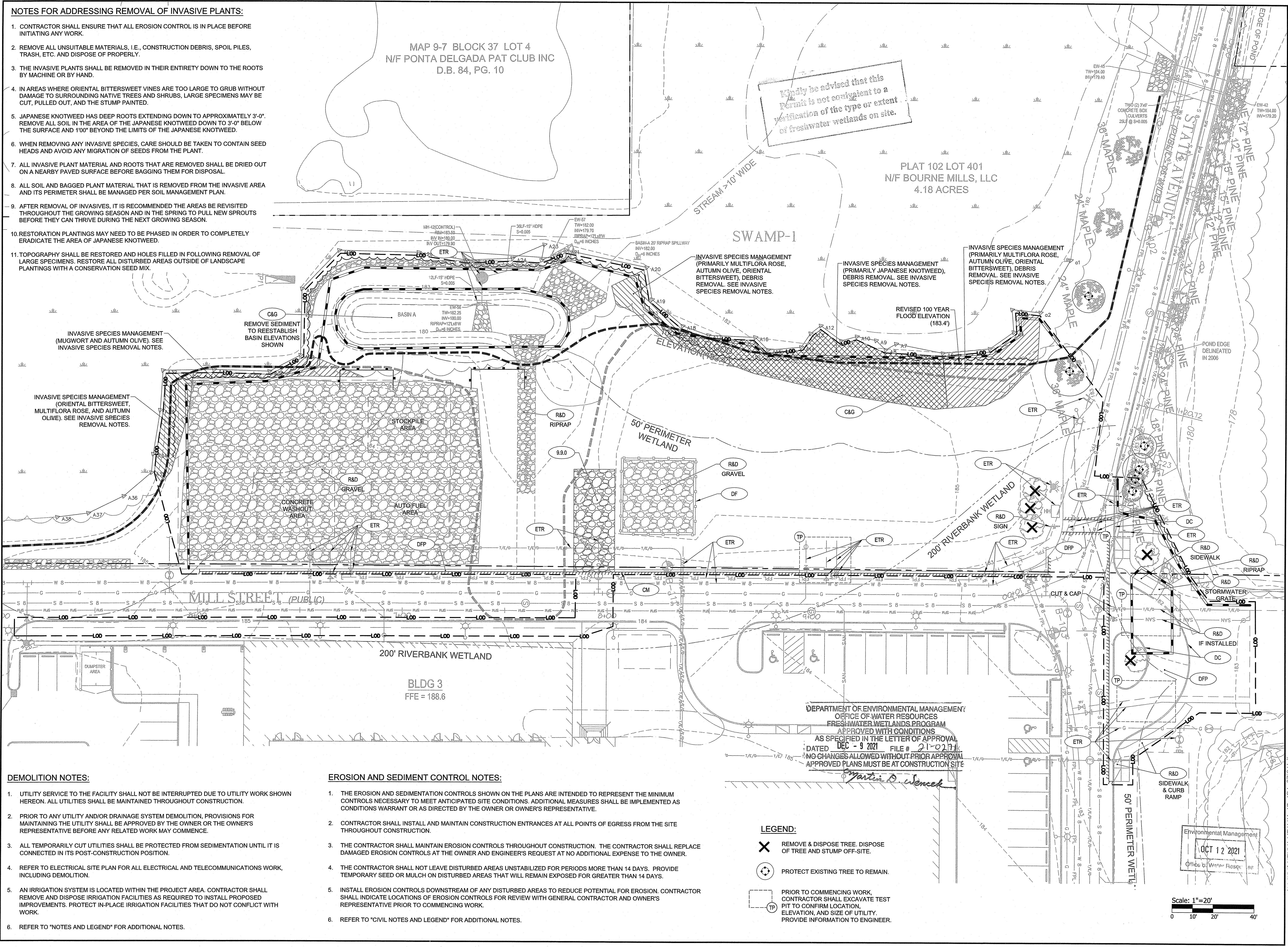
REVISIONS: PROJECT NO.: 19007.01 DATE: OCTOBER 8, 2021 SCALE: NOT TO SCALE DESIGNED BY: ACB CHECKED BY: MA DRAWN BY: AKL APPROVED BY: DLP DRAWING TITLE: NOTES & LEGEND DRAWING NO.: C1.1 SHEET NO. 2 OF 12

**NOTES FOR ADDRESSING REMOVAL OF INVASIVE PLANTS:**

1. CONTRACTOR SHALL ENSURE THAT ALL EROSION CONTROL IS IN PLACE BEFORE INITIATING ANY WORK.
2. REMOVE ALL UNSUITABLE MATERIALS, I.E., CONSTRUCTION DEBRIS, SPOIL PILES, TRASH, ETC. AND DISPOSE OF PROPERLY.
3. THE INVASIVE PLANTS SHALL BE REMOVED IN THEIR ENTIRETY DOWN TO THE ROOTS BY MACHINE OR BY HAND.
4. IN AREAS WHERE ORIENTAL BITTERSWEET VINES ARE TOO LARGE TO GRUB WITHOUT DAMAGE TO SURROUNDING NATIVE TREES AND SHRUBS, LARGE SPECIMENS MAY BE CUT, PULLED OUT, AND THE STUMP PAINTED.
5. JAPANESE KNOTWEED HAS DEEP ROOTS EXTENDING DOWN TO APPROXIMATELY 3'-0". REMOVE ALL SOIL IN THE AREA OF THE JAPANESE KNOTWEED DOWN TO 3'-0" BELOW THE SURFACE AND 1'00" BEYOND THE LIMITS OF THE JAPANESE KNOTWEED.
6. WHEN REMOVING ANY INVASIVE SPECIES, CARE SHOULD BE TAKEN TO CONTAIN SEED HEADS AND AVOID ANY MIGRATION OF SEEDS FROM THE PLANT.
7. ALL INVASIVE PLANT MATERIAL AND ROOTS THAT ARE REMOVED SHALL BE DRIED OUT ON A NEARBY PAVED SURFACE BEFORE BAGGING THEM FOR DISPOSAL.
8. ALL SOIL AND BAGGED PLANT MATERIAL THAT IS REMOVED FROM THE INVASIVE AREA AND ITS PERIMETER SHALL BE MANAGED PER SOIL MANAGEMENT PLAN.
9. AFTER REMOVAL OF INVASIVES, IT IS RECOMMENDED THE AREAS BE REVISITED THROUGHOUT THE GROWING SEASON AND IN THE SPRING TO PULL NEW SPROUTS BEFORE THEY CAN THRIVE DURING THE NEXT GROWING SEASON.
10. RESTORATION PLANTINGS MAY NEED TO BE PHASED IN ORDER TO COMPLETELY ERADICATE THE AREA OF JAPANESE KNOTWEED.
11. TOPOGRAPHY SHALL BE RESTORED AND HOLES FILLED IN FOLLOWING REMOVAL OF LARGE SPECIMENS. RESTORE ALL DISTURBED AREAS OUTSIDE OF LANDSCAPE PLANTINGS WITH A CONSERVATION SEED MIX.

MAP 9-7 BLOCK 37 LOT 4  
N/F PONTA DELGADA PAT CLUB INC  
D.B. 84, PG. 10

Kindly be advised that this permit is not contingent to a verification of the type or extent of freshwater wetlands on site.



**DEMOLITION NOTES:**

1. UTILITY SERVICE TO THE FACILITY SHALL NOT BE INTERRUPTED DUE TO UTILITY WORK SHOWN HEREON. ALL UTILITIES SHALL BE MAINTAINED THROUGHOUT CONSTRUCTION.
2. PRIOR TO ANY UTILITY AND/OR DRAINAGE SYSTEM DEMOLITION, PROVISIONS FOR MAINTAINING THE UTILITY SHALL BE APPROVED BY THE OWNER OR THE OWNER'S REPRESENTATIVE BEFORE ANY RELATED WORK MAY COMMENCE.
3. ALL TEMPORARILY CUT UTILITIES SHALL BE PROTECTED FROM SEDIMENTATION UNTIL IT IS CONNECTED IN ITS POST-CONSTRUCTION POSITION.
4. REFER TO ELECTRICAL SITE PLAN FOR ALL ELECTRICAL AND TELECOMMUNICATIONS WORK, INCLUDING DEMOLITION.
5. AN IRRIGATION SYSTEM IS LOCATED WITHIN THE PROJECT AREA. CONTRACTOR SHALL REMOVE AND DISPOSE IRRIGATION FACILITIES AS REQUIRED TO INSTALL PROPOSED IMPROVEMENTS. PROTECT IN-PLACE IRRIGATION FACILITIES THAT DO NOT CONFLICT WITH WORK.
6. REFER TO "NOTES AND LEGEND" FOR ADDITIONAL NOTES.

**EROSION AND SEDIMENT CONTROL NOTES:**

1. THE EROSION AND SEDIMENTATION CONTROLS SHOWN ON THE PLANS ARE INTENDED TO REPRESENT THE MINIMUM CONTROLS NECESSARY TO MEET ANTICIPATED SITE CONDITIONS. ADDITIONAL MEASURES SHALL BE IMPLEMENTED AS CONDITIONS WARRANT OR AS DIRECTED BY THE OWNER OR OWNER'S REPRESENTATIVE.
2. CONTRACTOR SHALL INSTALL AND MAINTAIN CONSTRUCTION ENTRANCES AT ALL POINTS OF EGRESS FROM THE SITE THROUGHOUT CONSTRUCTION.
3. THE CONTRACTOR SHALL MAINTAIN EROSION CONTROLS THROUGHOUT CONSTRUCTION. THE CONTRACTOR SHALL REPLACE DAMAGED EROSION CONTROLS AT THE OWNER AND ENGINEER'S REQUEST AT NO ADDITIONAL EXPENSE TO THE OWNER.
4. THE CONTRACTOR SHALL NOT LEAVE DISTURBED AREAS UNSTABILIZED FOR PERIODS MORE THAN 14 DAYS. PROVIDE TEMPORARY SEED OR MULCH ON DISTURBED AREAS THAT WILL REMAIN EXPOSED FOR GREATER THAN 14 DAYS.
5. INSTALL EROSION CONTROLS DOWNSTREAM OF ANY DISTURBED AREAS TO REDUCE POTENTIAL FOR EROSION. CONTRACTOR SHALL INDICATE LOCATIONS OF EROSION CONTROLS FOR REVIEW WITH GENERAL CONTRACTOR AND OWNER'S REPRESENTATIVE PRIOR TO COMMENCING WORK.
6. REFER TO "CIVIL NOTES AND LEGEND" FOR ADDITIONAL NOTES.

**LEGEND:**

- ✕ REMOVE & DISPOSE TREE. DISPOSE OF TREE AND STUMP OFF-SITE.
- ⊕ PROTECT EXISTING TREE TO REMAIN.
- TP PRIOR TO COMMENCING WORK, CONTRACTOR SHALL EXCAVATE TEST PIT TO CONFIRM LOCATION, ELEVATION, AND SIZE OF UTILITY. PROVIDE INFORMATION TO ENGINEER.

**PARE CORPORATION**  
ENGINEERS - SCIENTISTS - PLANNERS  
8 BLACKSTONE VALLEY PLACE 10 LINCOLN ROAD, SUITE 200  
PROVIDENCE, RI 02915  
401-394-4100 308-943-1755

OWNER  
BOURNE MILLS, LLC  
C/O THE ARMORY  
REVIVAL COMPANY  
334 BROADWAY  
PROVIDENCE, RI 02909

SCALE ADJUSTMENT GUIDE  
0" 1"  
BAR IS ONE INCH ON ORIGINAL DRAWING

**BOURNE MILL - PHASE III**  
AP 102, LOTS 400 & 401  
1 MILL STREET  
TIVERTON, RHODE ISLAND

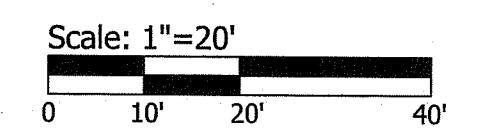
**DAVID L. POTTER**  
No. 8665  
REGISTERED PROFESSIONAL ENGINEER (CIVIL)  
1.6.08-1.1

REVISIONS:

NO.	DATE	DESCRIPTION

PROJECT NO.: 19007.01  
DATE: OCTOBER 8, 2021  
SCALE: 1"=20'  
DESIGNED BY: ACB  
CHECKED BY: MA  
DRAWN BY: AKL  
APPROVED BY: DLP  
DRAWING TITLE:  
DEMOLITION, EROSION & SEDIMENT CONTROL PLAN  
DRAWING NO.:  
**C2.1**  
SHEET NO. 3 OF 12

X-179.20 TOP OF WATER TAKEN JAN. 11.



DEPARTMENT OF ENVIRONMENTAL MANAGEMENT  
OFFICE OF WATER RESOURCES  
FRESHWATER WETLANDS PROGRAM  
APPROVED WITH CONDITIONS  
AS SPECIFIED IN THE LETTER OF APPROVAL  
DATED DEC - 9 2021 FILE # 21-0277  
NO CHANGES ALLOWED WITHOUT PRIOR APPROVAL  
APPROVED PLANS MUST BE AT CONSTRUCTION SITE

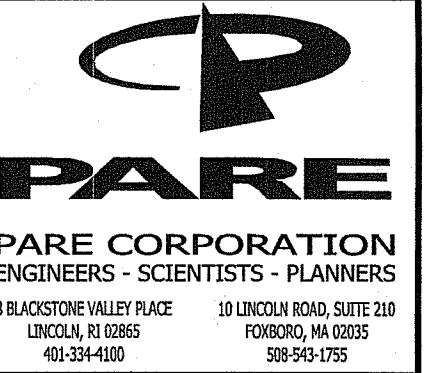
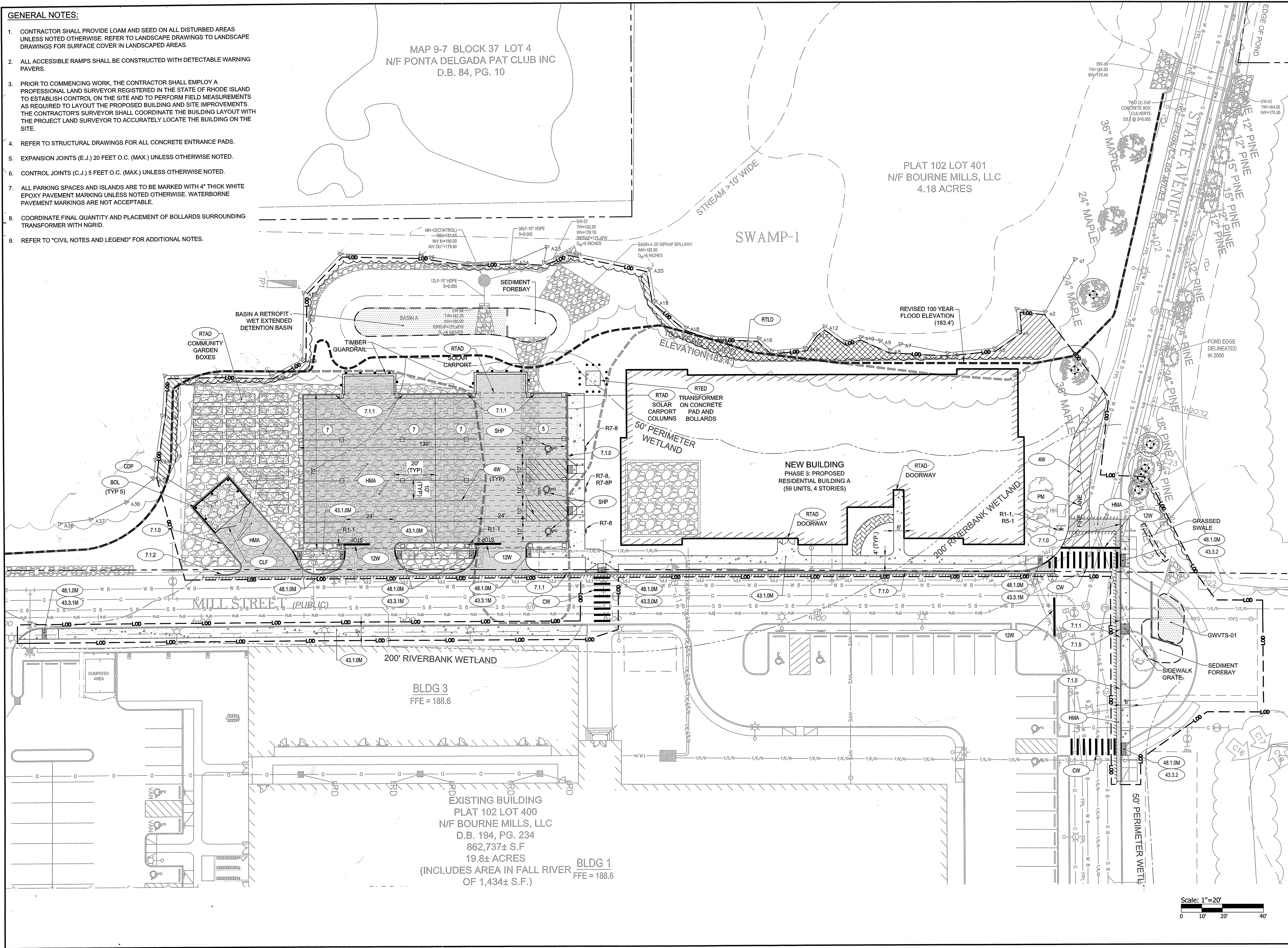
Environmental Management  
OCT 12 2021  
Office of Water Resources

**GENERAL NOTES:**

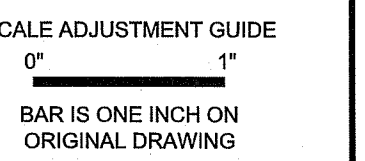
- CONTRACTOR SHALL PROVIDE LOAM AND SEED ON ALL DISTURBED AREAS UNLESS NOTED OTHERWISE. REFER TO LANDSCAPE DRAWINGS TO LANDSCAPE DRAWINGS FOR SURFACE COVER IN LANDSCAPED AREAS.
- ALL ACCESSIBLE RAMPS SHALL BE CONSTRUCTED WITH DETECTABLE WARNING PAVERS.
- PRIOR TO COMMENCING WORK, THE CONTRACTOR SHALL EMPLOY A PROFESSIONAL LAND SURVEYOR REGISTERED IN THE STATE OF RHODE ISLAND TO ESTABLISH CONTROL ON THE SITE AND TO PERFORM FIELD MEASUREMENTS AS REQUIRED TO LAYOUT THE PROPOSED BUILDING AND SITE IMPROVEMENTS. THE CONTRACTOR'S SURVEYOR SHALL COORDINATE THE BUILDING LAYOUT WITH THE PROJECT LAND SURVEYOR TO ACCURATELY LOCATE THE BUILDING ON THE SITE.
- REFER TO STRUCTURAL DRAWINGS FOR ALL CONCRETE ENTRANCE PADS.
- EXPANSION JOINTS (E.J.) 20 FEET O.C. (MAX.) UNLESS OTHERWISE NOTED.
- CONTROL JOINTS (C.J.) 5 FEET O.C. (MAX.) UNLESS OTHERWISE NOTED.
- ALL PARKING SPACES AND ISLANDS ARE TO BE MARKED WITH 4" THICK WHITE EPOXY PAVEMENT MARKING UNLESS NOTED OTHERWISE. WATERBORNE PAVEMENT MARKINGS ARE NOT ACCEPTABLE.
- COORDINATE FINAL QUANTITY AND PLACEMENT OF BOLLARDS SURROUNDING TRANSFORMER WITH NGRID.
- REFER TO "CIVIL NOTES AND LEGEND" FOR ADDITIONAL NOTES.

MAP 9-7 BLOCK 37 LOT 4  
N/F PONTA DELGADA PAT CLUB INC  
D.B. 84, PG. 10

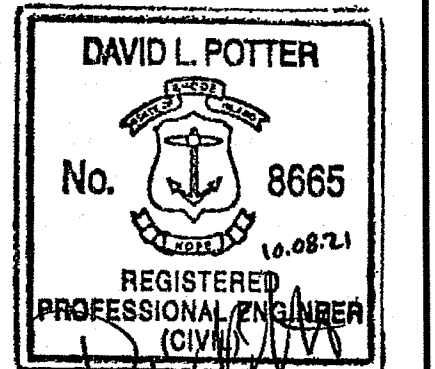
PLAT 102 LOT 401  
N/F BOURNE MILLS, LLC  
4.18 ACRES



OWNER  
BOURNE MILLS, LLC  
C/O THE ARMORY  
REVIVAL COMPANY  
334 BROADWAY  
PROVIDENCE, RI 02909



**BOURNE MILL - PHASE III**  
AP 102, LOTS 400 & 401  
1 MILL STREET  
TIVERTON, RHODE ISLAND

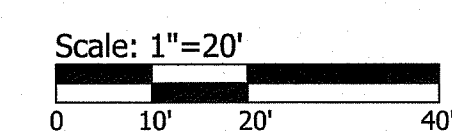


**REVISIONS:**

NO.	DATE	DESCRIPTION

PROJECT NO.: 19007.01  
DATE: OCTOBER 8, 2021  
SCALE: 1"=20'  
DESIGNED BY: ACB  
CHECKED BY: MA  
DRAWN BY: AKL  
APPROVED BY: DLP  
DRAWING TITLE:

GENERAL PLAN  
DRAWING NO.: C3.1  
SHEET NO. 4 OF 12



X:179.20' TOP OF WATER TAKEN JAN. 11.

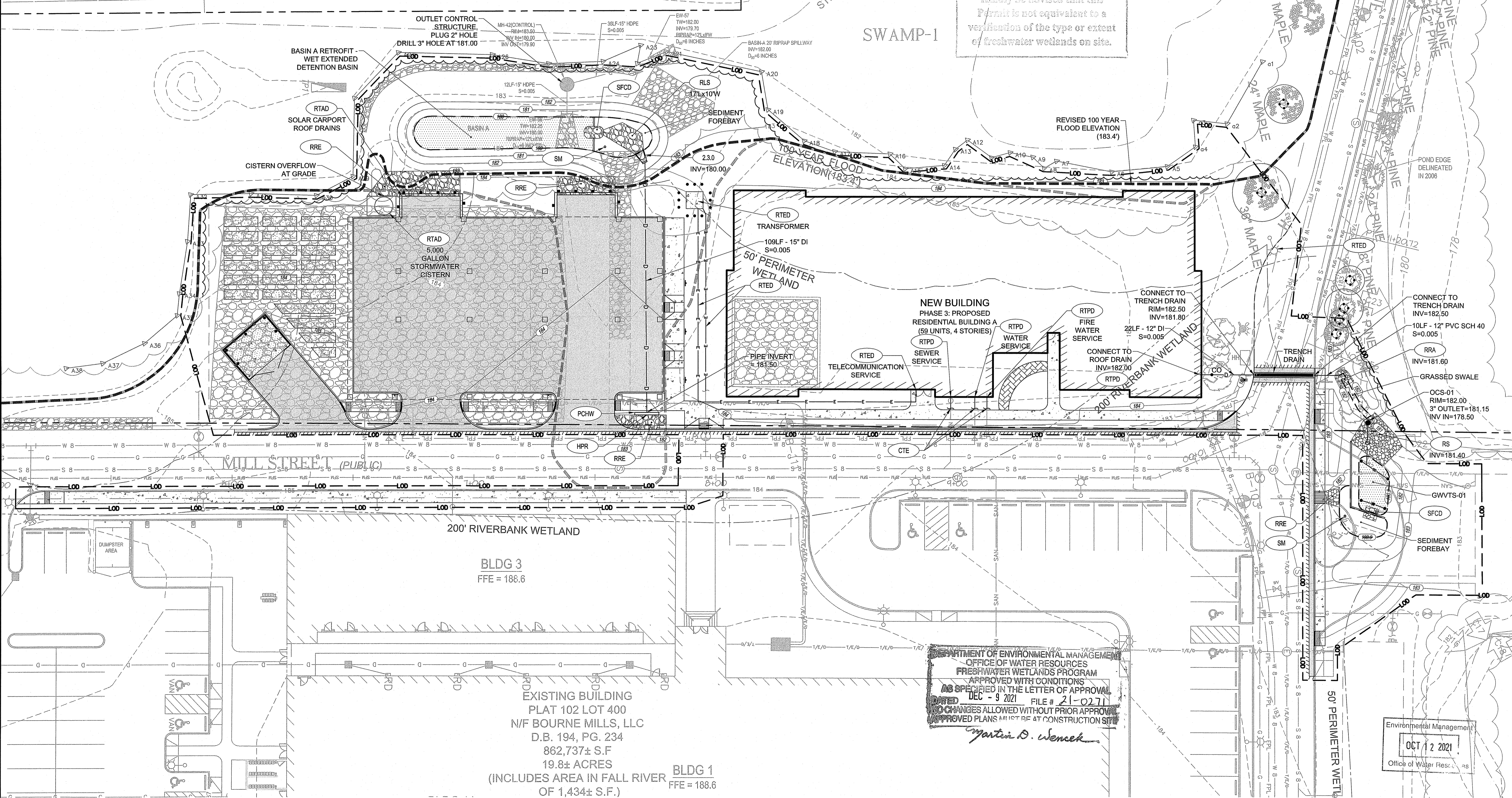


- NOTES:**
- ALL CATCH BASINS AND DRAIN MANHOLES SHALL BE 4' DIA. PRECAST CONCRETE UNLESS NOTED OTHERWISE.
  - ALL DRAIN PIPES SHALL BE SMOOTH INTERIOR CORRUGATED HIGH DENSITY POLYETHYLENE UNLESS NOTED OTHERWISE.
  - ALL SLOPES PROVIDED ARE FT/FT.
  - REFER TO ELECTRICAL DRAWINGS FOR INFORMATION ON ELECTRIC AND TEL/DATA DUCT BANKS AND STRUCTURES. ALL ELECTRICAL FACILITIES DISPLAYED FOR REFERENCE ONLY.
  - REPAIR OR REPLACE DAMAGED IRRIGATION FACILITIES TO PRE-CONSTRUCTION CONDITIONS AT NO ADDITIONAL COST TO THE OWNER.
  - MODIFICATIONS AND REPAIRS TO THE EXISTING IRRIGATION SYSTEM AND SUPPLY WATER SERVICE SHALL BE DESIGNED, FURNISHED AND INSTALLED BY THE CONTRACTOR. THIS INCLUDES ALL WATER AND ELECTRICAL COMPONENTS INSTALLED PER MANUFACTURERS RECOMMENDATIONS.
  - REFER TO "CIVIL NOTES AND LEGEND" FOR ADDITIONAL NOTES.

MAP 9-7 BLOCK 37 LOT 4  
N/F PONTA DELGADA PAT CLUB INC  
D.B. 84, PG. 10

PLAT 102 LOT 401  
N/F BOURNE MILLS, LLC  
4.18 ACRES

Kindly be advised that this  
Permit is not equivalent to a  
verification of the type or extent  
of freshwater wetlands on site.



**PARE CORPORATION**  
ENGINEERS - SCIENTISTS - PLANNERS  
10 BLACKSTONE VALLEY PLACE  
LINCOLN, RI 02885  
401-334-0300

OWNER:  
BOURNE MILLS, LLC  
C/O THE ARMORY  
REVIVAL COMPANY  
334 BROADWAY  
PROVIDENCE, RI 02909



SCALE ADJUSTMENT GUIDE  
0' 10' 20' 30' 40'  
BAR IS ONE INCH ON ORIGINAL DRAWING

**BOURNE MILL - PHASE III**  
AP 102, LOTS 400 & 401  
1 MILL STREET  
TIVERTON, RHODE ISLAND

**DAVID L. POTTER**  
No. 8665  
REGISTERED PROFESSIONAL ENGINEER (CIVIL)  
L.S. 08-21

REVISIONS:

NO.	DATE	DESCRIPTION

PROJECT NO.: 19007.01  
DATE: OCTOBER 8, 2021  
SCALE: 1"=20'  
DESIGNED BY: ACB  
CHECKED BY: MA  
DRAWN BY: AKL  
APPROVED BY: DLP  
DRAWING TITLE:

DRAINAGE & UTILITY PLAN

DRAWING NO.: C5.1  
SHEET NO. 6 OF 12

DEPARTMENT OF ENVIRONMENTAL MANAGEMENT  
OFFICE OF WATER RESOURCES  
FRESHWATER WETLANDS PROGRAM  
APPROVED WITH CONDITIONS  
AS SPECIFIED IN THE LETTER OF APPROVAL  
DATED DEC - 9 2021 FILE # 21-0271  
NO CHANGES ALLOWED WITHOUT PRIOR APPROVAL  
APPROVED PLANS MUST BE AT CONSTRUCTION SITE

*Martin D. Wenczek*

Scale: 1"=20'  
0 10' 20' 40'

X:179.20' TOP OF WATER TAKEN JAN. 11.







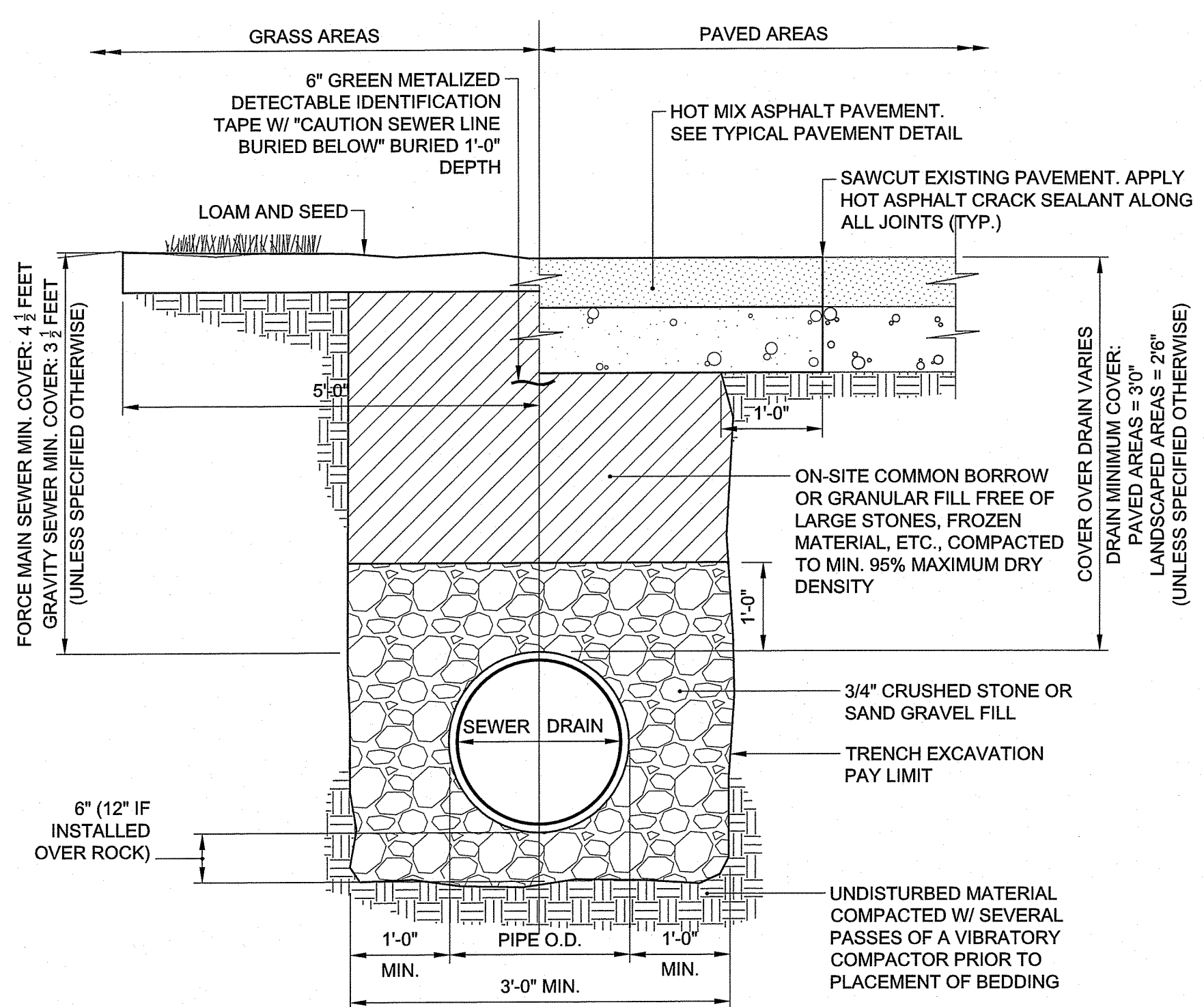
DEPARTMENT OF ENVIRONMENTAL MANAGEMENT  
 OFFICE OF WATER RESOURCES  
 FRESHWATER WETLANDS PROGRAM  
 APPROVED WITH CONDITIONS  
 AS SPECIFIED IN THE LETTER OF APPROVAL  
 DATED DEC - 9 2021 FILE # 21-0271  
 NO CHANGES ALLOWED WITHOUT PRIOR APPROVAL  
 APPROVED PLANS MUST BE AT CONSTRUCTION SITE  
*Martin D. Sencel*

REVISIONS:

PROJECT NO.: 19007.01  
 DATE: OCTOBER 8, 2021  
 SCALE: NOT TO SCALE  
 DESIGNED BY: ACB  
 CHECKED BY: MA  
 DRAWN BY: AKL  
 APPROVED BY: DLP  
 DRAWING TITLE:

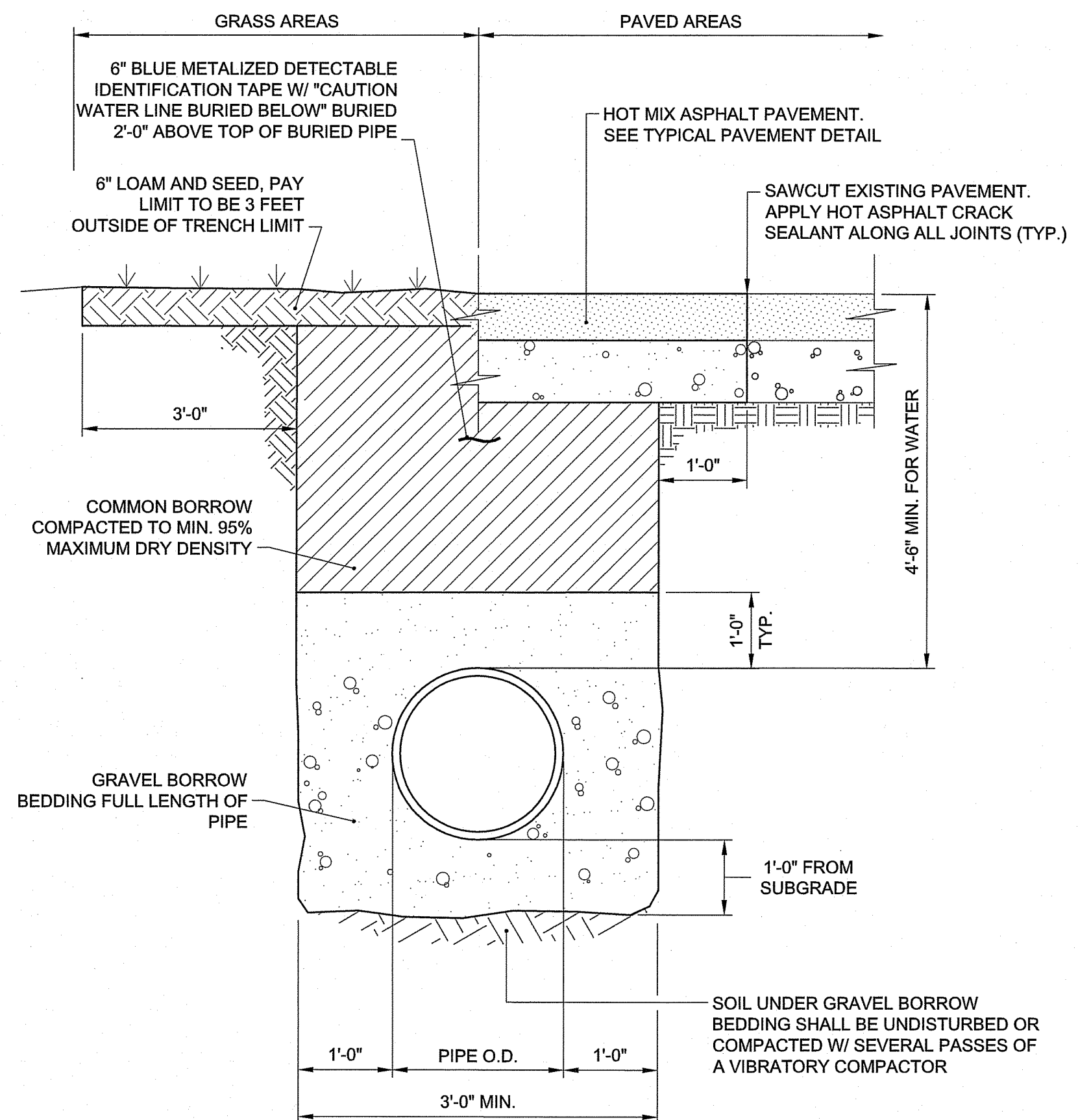
DETAILS 4

DRAWING NO.: C6.4  
 SHEET NO. 10 OF 12

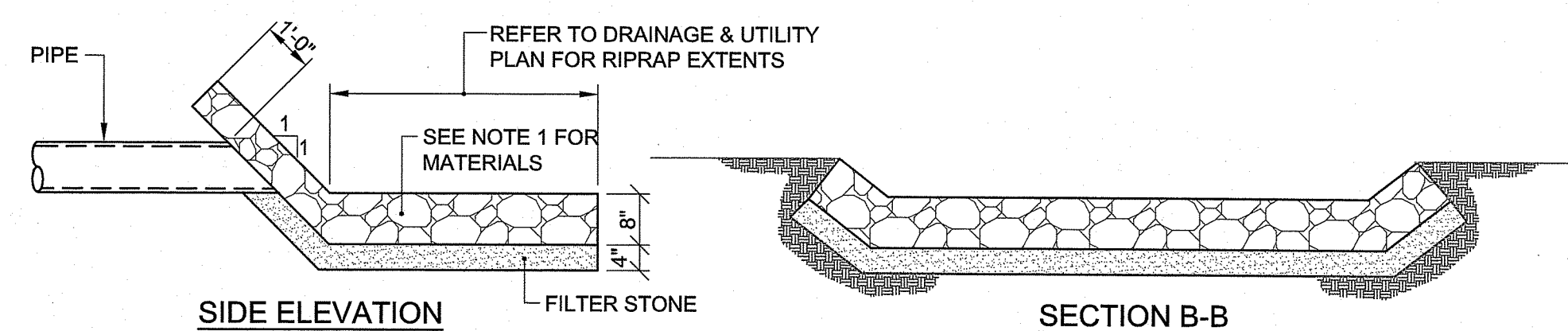
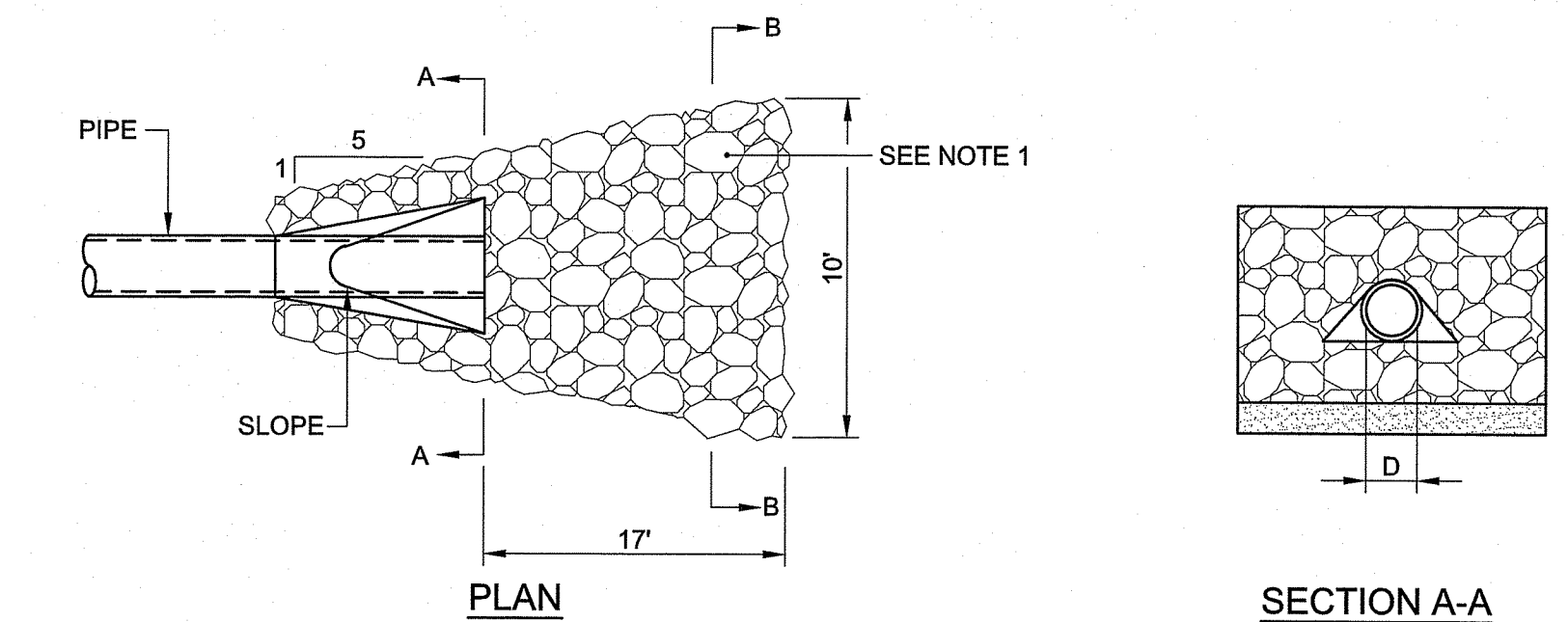


- NOTES:
- WHERE THE DISTANCE BETWEEN THE SAWCUT AND EDGE OF PAVEMENT IS 3' OR LESS, THE CONTRACTOR SHALL REPLACE THE PAVEMENT FROM THE TRENCH EDGE TO THE EXISTING EDGE OF PAVEMENT.
  - 3/4" DIA. CRUSHED STONE SHALL BE USED AS BEDDING WHERE TRENCH IS BELOW THE GROUND WATER TABLE.

**SEWER/RAIN TRENCH DETAIL**  
 NOT TO SCALE

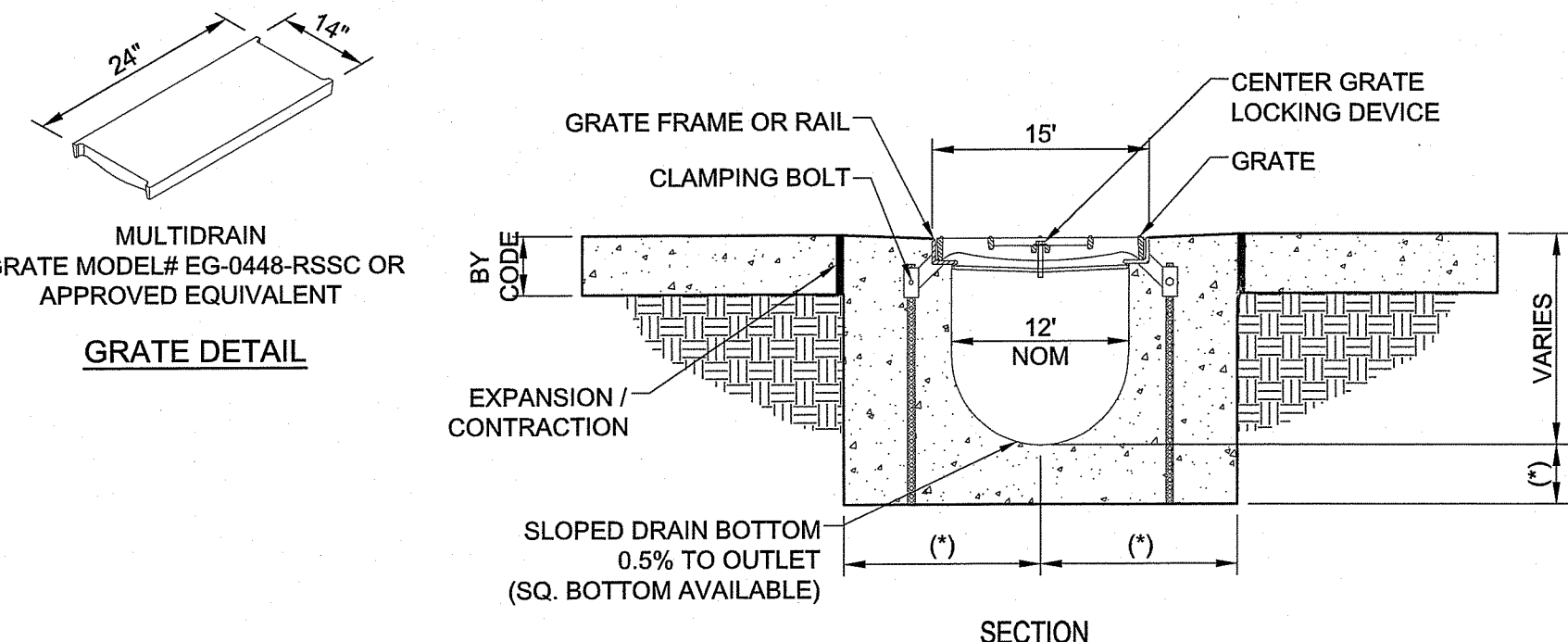


**WATER MAIN TRENCH DETAIL**  
 NOT TO SCALE



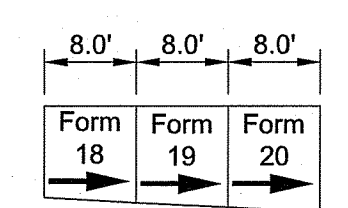
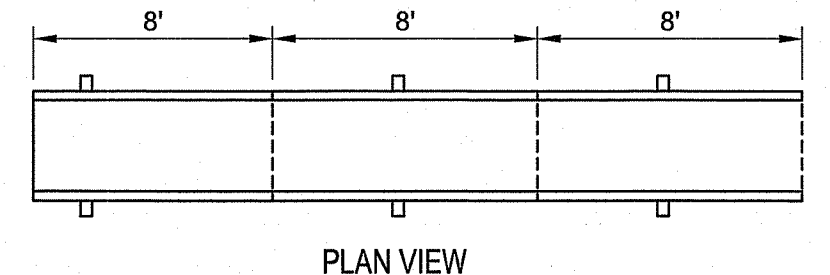
- NOTE:  
 1. PROVIDE THE FOLLOWING MATERIALS WHERE INDICATED ON THE PLANS:  
 RIPRAP - 6" DIAMETER RIPRAP

**RLS LEVEL SPREADER**  
 NOT TO SCALE



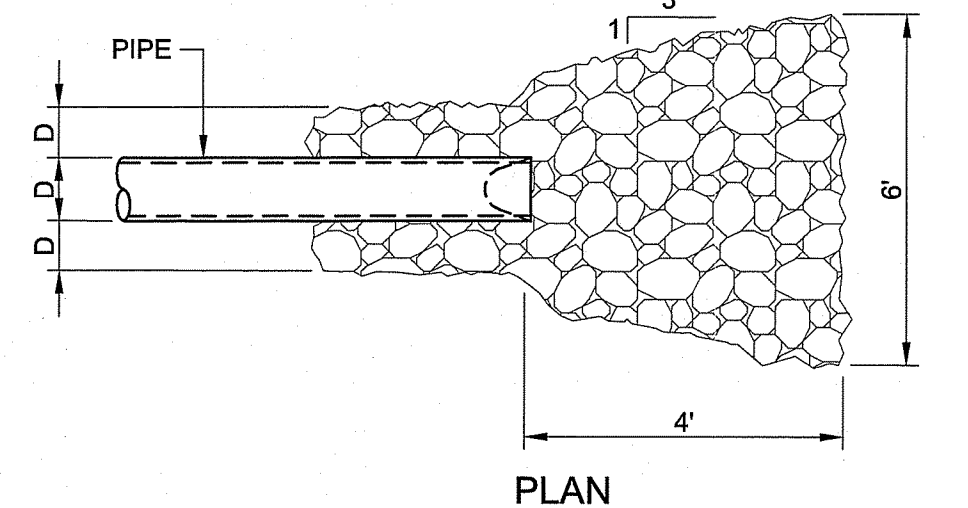
- CONSTRUCTION NOTES:
- INSTALLATION TO BE COMPLETED IN ACCORDANCE WITH MANUFACTURERS SPECIFICATIONS.
  - SECURE OUTLET PIPE PRIOR TO CONCRETING OPERATIONS.
  - TRENCH DRAIN AND GRATE SHALL BE RATED TO WITHSTAND H-20 LOADING CRITERIA.
  - GRATE ELEVATIONS SHALL MATCH EXISTING GRADE.

**TRENCH DRAIN DETAIL**  
 NOT TO SCALE

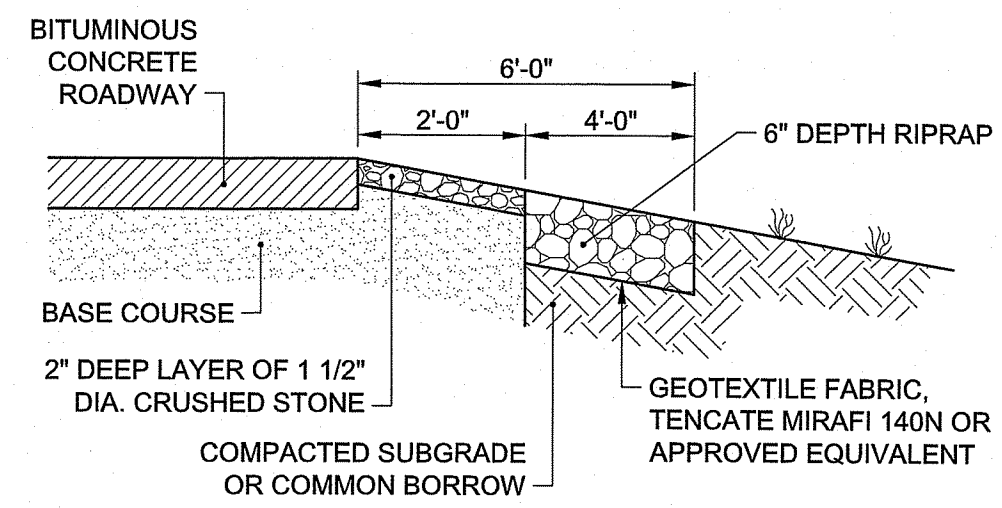


SHALLOW EPS FORMS	EPS FORM	MIN	DEPTH	MAX
TRENCH DRAIN 1	18	12"	12-1/2"	
	19	12-1/2"	13"	
	20	13"	13-1/2"	

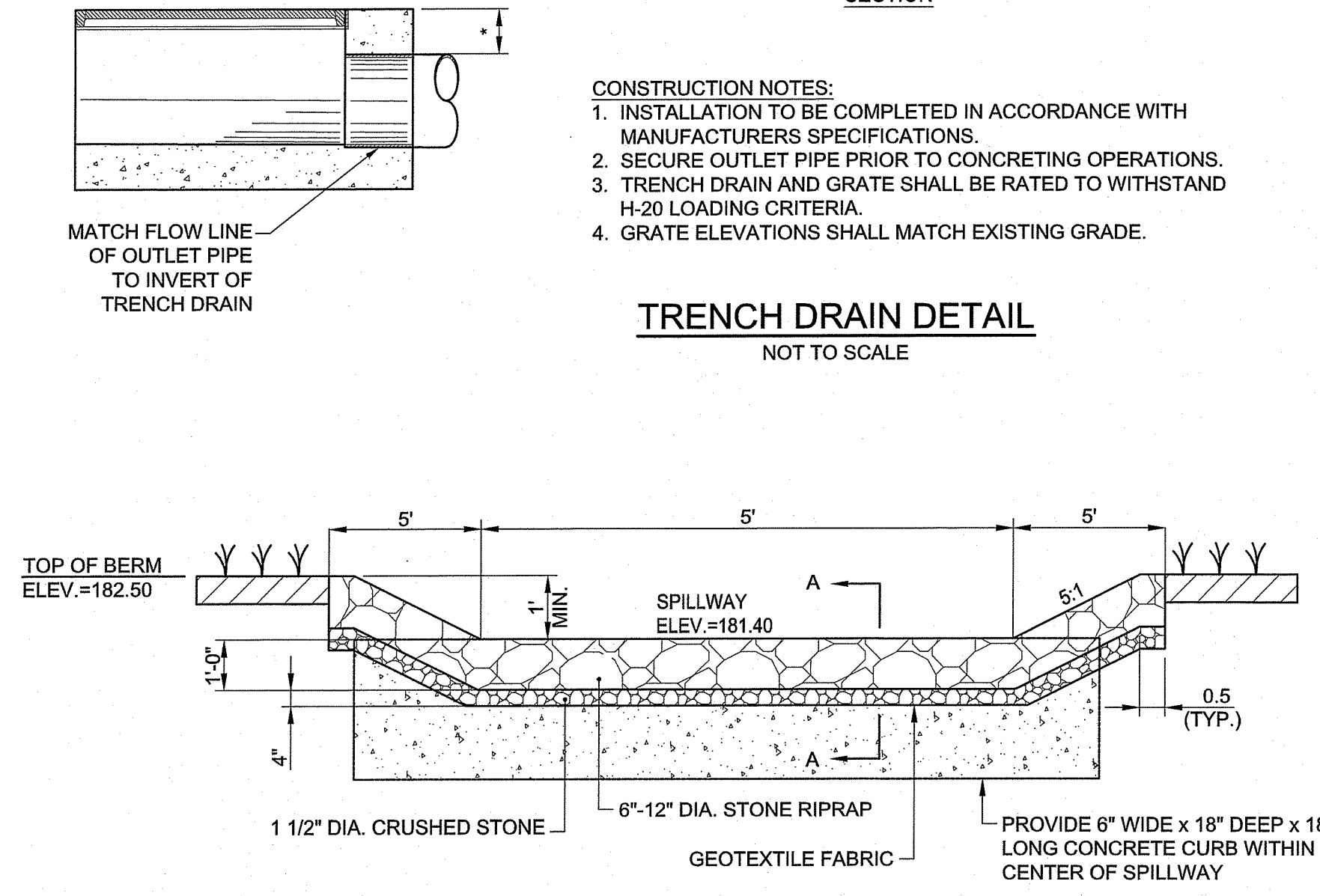
TRENCH DRAIN 1



**RRA RIPRAP APRON**  
 NOT TO SCALE

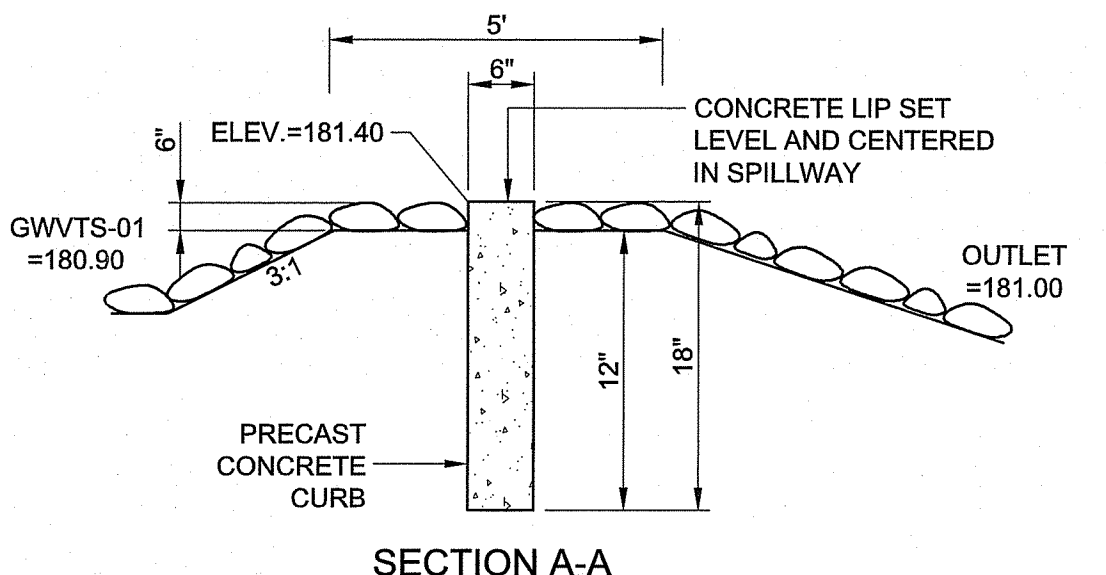


**RRE RIPRAP EDGE**  
 NOT TO SCALE

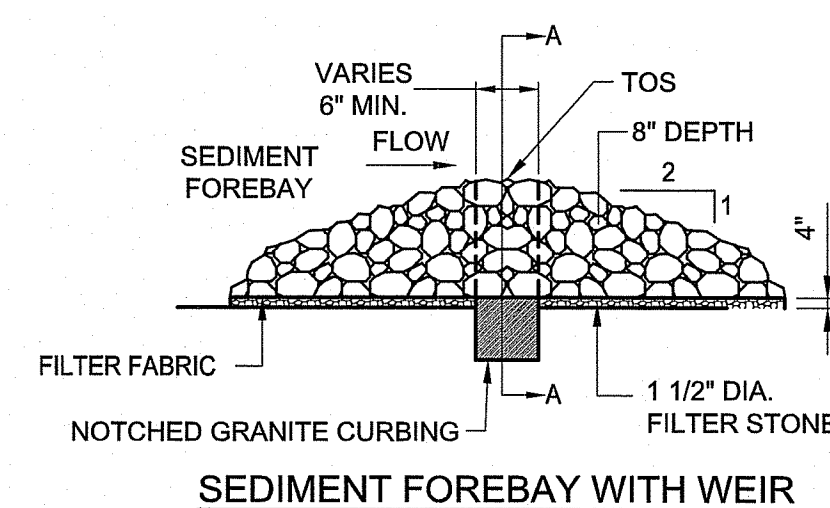


- NOTE:  
 CONTRACTOR SHALL FILL VOIDS BETWEEN CURB SECTIONS WITH MORTAR

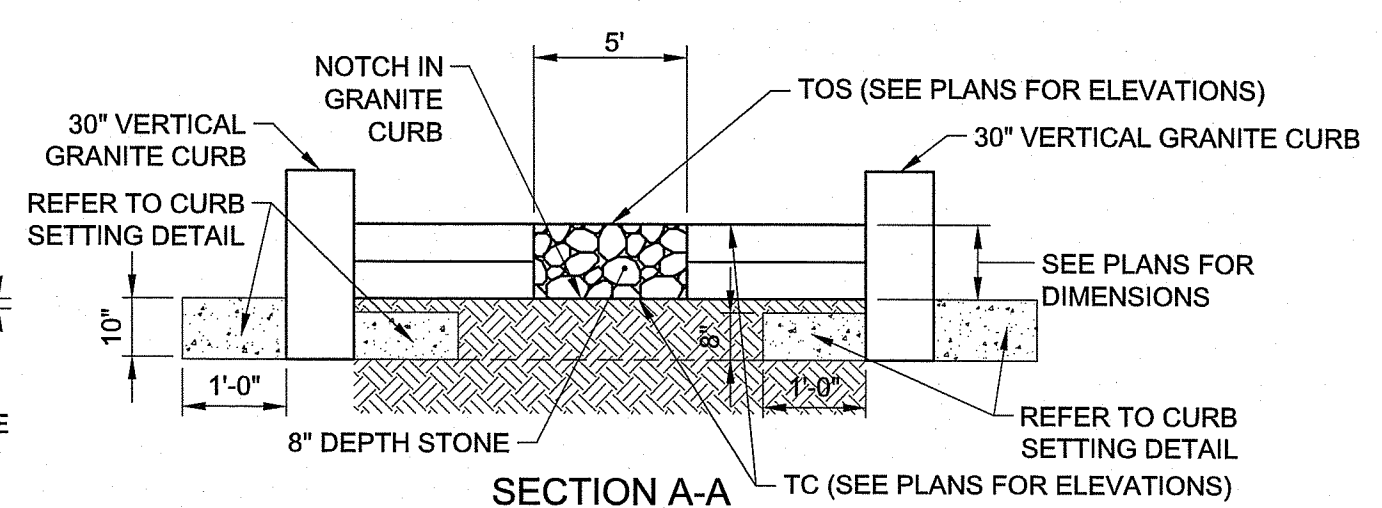
**RS RIPRAP SPILLWAY DETAIL**  
 NOT TO SCALE



SECTION A-A



SEDIMENT FOREBAY WITH WEIR

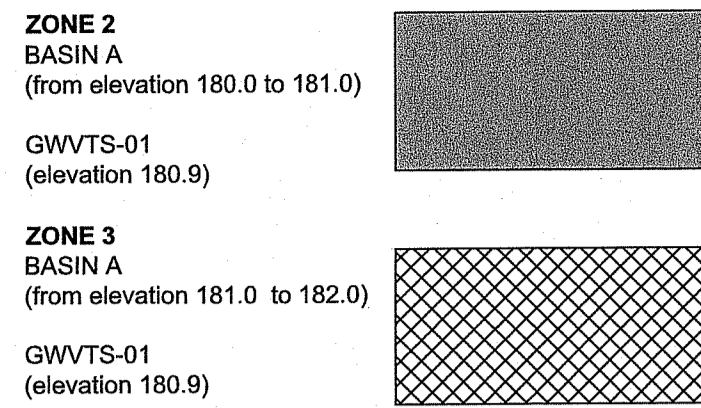


**SFCD SEDIMENT FOREBAY CHECK DAM**  
 NOT TO SCALE

Environmental Management  
 OCT 12 2021  
 Office of Water



**KEY**



**PLANTING NOTES FOR ADDRESSING REMOVAL OF INVASIVE SPECIES**

1. Per C2.1, the invasive species and soil shall be removed and disposed of at an approved and permitted location. Prior to planting within the invasive species removal area, the Contractor shall verify that the identified invasive species have not reestablished after the first growing season. If invasive species are observed, the Contractor shall remove the invasive species per C2.1.

**STORMWATER MANAGEMENT PLANTING PLAN**

SEED FURNISHED BY NEW ENGLAND WETLAND PLANTS, INC.  
820 West Street, Amherst, MA  
www.newp.com OR APPROVED EQUAL

**BASIN 'A'**

ZONE	BOTANICAL NAME	COMMON NAME	QUANTITY*	INDICATOR
2	Carex stricta	Tussock Sedge	333	OBL
	Eupatorium perfoliatum	Boneset	333	FACW+
	Scirpus cyperinus	Woolgrass	333	OBL

\*2 inch plug; 18 inches on center

**GWVTS-01**

ZONE	BOTANICAL NAME	COMMON NAME	QUANTITY*	INDICATOR
2	Carex stricta	Tussock Sedge	107	OBL
	Eupatorium perfoliatum	Boneset	107	FACW+
	Scirpus cyperinus	Woolgrass	107	OBL

\*2 inch plug; 18 inches on center

**Carex stricta (Tussock Sedge)**

This hummock-forming sedge is used by geese and other birds for nesting sites.

Shallow water, shores, in full sun to full shade

**Eupatorium perfoliatum (Boneset)**

A tall flowering herb found in wet meadows and marshes.

Shallow water, shores, wet meadows in full sun or partial shade

**Scirpus cyperinus (Woolgrass)**

An aggressively rooting plant valuable for erosion control. Provides dense cover for wildlife and web support for various spiders.

Shallow water, shores, wet meadows in full sun

**ZONE 3**

**NEW ENGLAND WETMIX**

BOTANICAL NAME	COMMON NAME	INDICATOR
ALISMA PLANTAGO-AQUATICA	MUD PLANTAIN	OBL
ASTER NOVIBELGII	SWAMP MILKWEED	OBL
BIDENS CERNUA	NEW YORK ASTER	FACW
CAREX COMOSA	NODDING BUR MARIGOLD	OBL
CAREX GRINITA	BRISTLY-COSMOS SEDGE	OBL
CAREX LUPULINA	FRINGED SEDGE	OBL
CAREX LURIDA	HOP SEDGE	OBL
CAREX SCOPARIA	LURID SEDGE	OBL
CAREX VULPINOIDEA	BLUNT BROOM SEDGE	FACW
EUPATORIUM MACULATUM	FOX SEDGE	FACW
EUPATORIUM PERFOLIATUM	SPOTTED JOE PYE WEED	FACW
GLYCERIA CANADENSIS	BONESET	OBL
GLYCERIA STRIATA	RATTLESNAKE GRASS	OBL
JUNCUS EFFUSUS	FOWL MANNAGRASS	OBL
MIMULUS RINGENS	SOFT RUSH	FACW
ONOCLEA SENSIBILIS	SQUARE STEMMED MONKEY FLOWER	OBL
	SENSITIVE FERN	FACW

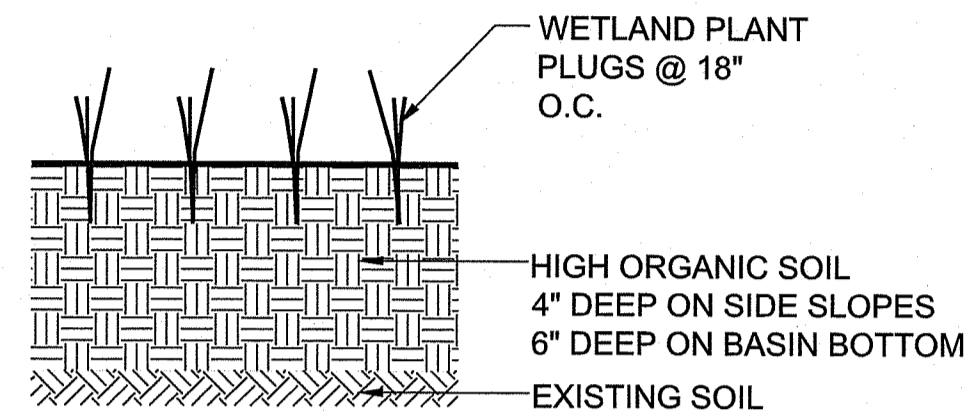
NOTE: CONTRACTOR TO SOW ABOVE SEED AT 18 LBS/ACRE. SEED TO BE SOWN BY THE HAND BROADCAST METHOD.

The New England Wetmix (Wetland Seed Mix) contains a wide variety of native seeds that are suitable for most wetland restoration sites that are not permanently flooded. All species are best suited to moist ground as found in most wet meadows, scrub shrub, or forested wetland restoration areas. The mix is well suited for detention basin borders and the bottom of detention basins not generally under standing water. The seeds will not germinate under inundated conditions. If planted during the fall months, the seed mix will germinate the following spring. During the first season of growth, several species will produce seeds while other species will produce seeds after the second growing season. Not all species will grow in all wetland situations. This mix is comprised of the wetland species most likely to grow in created/restored wetlands and should produce more than 75% ground cover in two full growing seasons.

**CONSERVATION SEED**

BOTANICAL NAME	COMMON NAME	INDICATOR
ELYMUS VIRGINICUS	VIRGINIA WILD RYE	FACW-
SCHIZACHYRIUM SCOPARIUM	LITTLE BLUESTEM	FACU
ANDROPOGON GERARDII	BIG BLUESTEM	FACU
FESTUCA RUBRA	RED FESCUE	FACU
SORGHASTRUM NITANS	INDIAN GRASS	UPL
PANICUM VIRGATUM	SWITCH GRASS	FACU
CHAMAECRISTA FASCICULATA	PARTRIDGE PEA	FACU
DESMODIUM CANADENSE	SHOWY TICK TREEFOIL	FACU
ASCLEPIAS TUBEROSA	BUTTERFLY MILKWEED	NI
BIDENS FRONDOSA	BEGGAR TICKS	FACW
EUPATORIUM PURPUREUM	PURPLE JOE PYE WEED	FACU
RUBECCKIA HIRTA	BLACK EYED SUSAN	FACU-
ASTER PILOSUS	HEATH OR HAIRY ASTER	UPL
SOLIDAGO JUNCEA	EARLY GOLDENROD	UPL

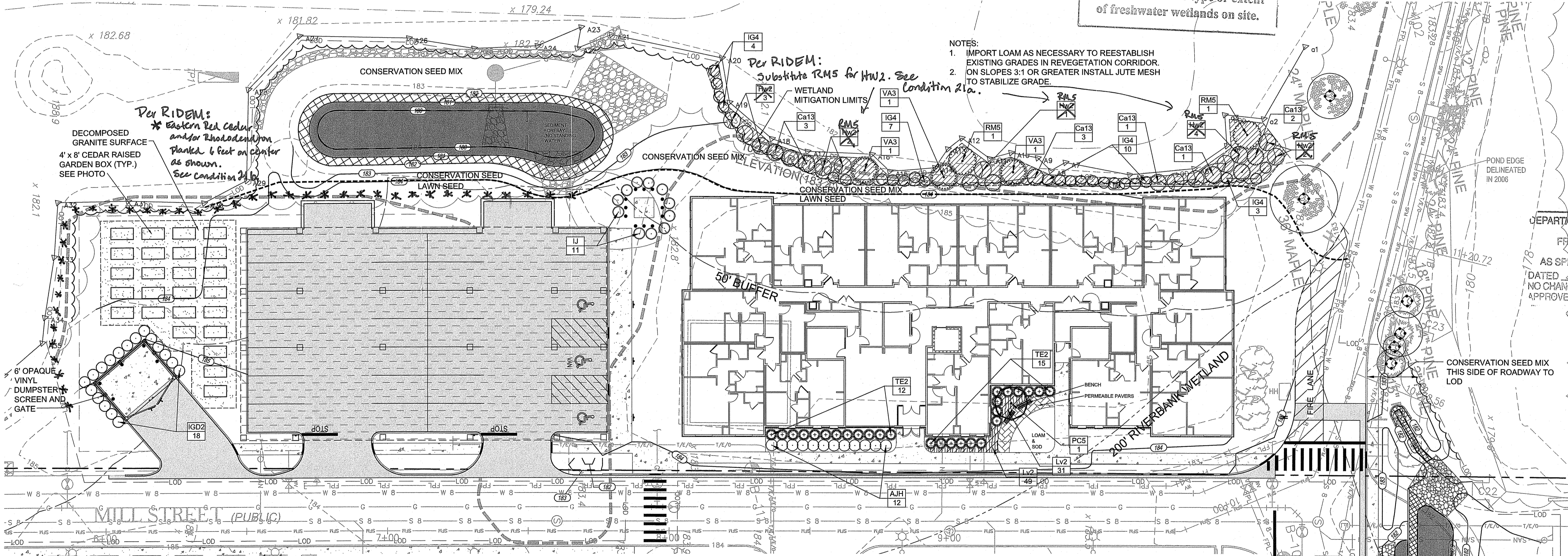
NOTE: CONTRACTOR TO SOW ABOVE SEED AT 25 LBS/ACRE. SEED TO BE SOWN BY THE HAND BROADCAST METHOD.



**BASIN PLUG PLANTING DETAIL**  
NO SCALE

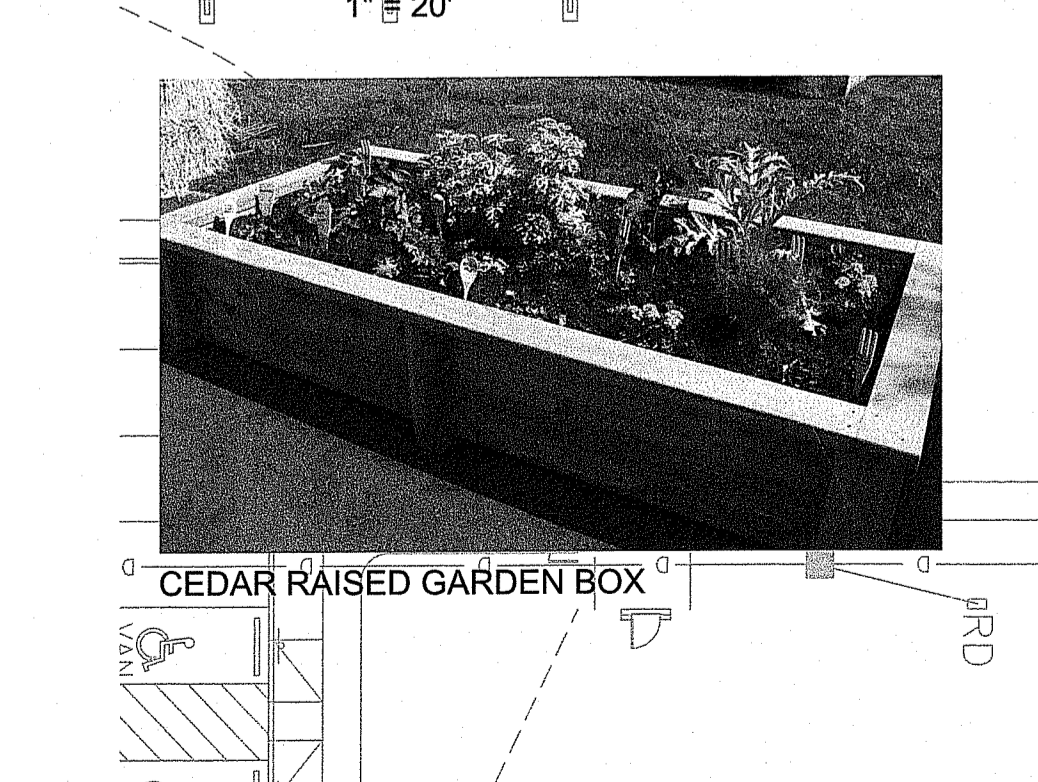
Kindly be advised that this Permit is not equivalent to a verification of the type or extent of freshwater wetlands on site.

- NOTES:
- IMPORT LOAM AS NECESSARY TO REESTABLISH EXISTING GRADES IN REVEGETATION CORRIDOR. ON SLOPES 3:1 OR GREATER INSTALL JUTE MESH TO STABILIZE GRADE.
  - Per RIDEM: Substitute RMS for HW2. See Condition 21a.



DEPARTMENT OF ENVIRONMENTAL MANAGEMENT  
OFFICE OF WATER RESOURCES  
FRESHWATER WETLANDS PROGRAM  
APPROVED WITH CONDITIONS  
AS SPECIFIED IN THE LETTER OF APPROVAL  
DATED DEC - 9 2021 FILE # 21-0271  
NO CHANGES ALLOWED WITHOUT PRIOR APPROVAL  
APPROVED PLANS MUST BE AT CONSTRUCTION SITE  
*Martin D. Wencik*

**LANDSCAPE PLAN**



**PLANT SCHEDULE**

FLOWERING TREES	QTY	BOTANICAL / COMMON NAME	B&B	CALIPER
	1	Prunus sargentii / Columar's / Columar Sargent Cherry	B & B;	2" Cal

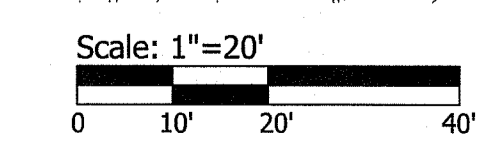
SHRUBS	CODE	QTY	BOTANICAL / COMMON NAME	CONT/B&B	SIZE
	AJH	12	Azalea x 'Joseph Hill' / Azalea	CONT	3 gal
	U	11	Ilex crenata 'Stedds' / Steeds Japanese Holly	B & B	36" - 42"
	IGD2	18	Ilex glabra 'Densa' / Inkberry Holly	CONT	3 gal
	TE2	27	Taxus x media 'Everlow' / Everlow Yew	CONT	5 gal

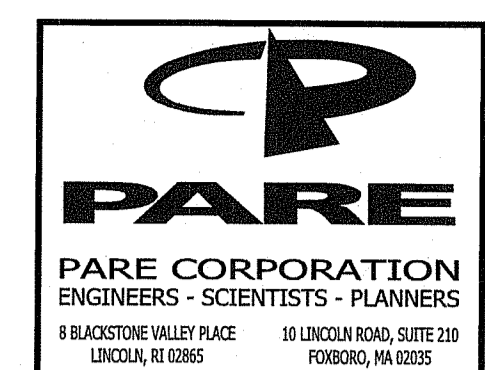
WETLAND MITIGATION	CODE	QTY	BOTANICAL / COMMON NAME	CONT/B&B	SIZE
	Ca13	10	Clethra alnifolia / Summersweet	CONT	2 gal
	RMS	12	Rhododendron maximum / Rose Bay	CONT	2 gal
	IG4	24	Ilex glabra / Inkberry Holly	CONT	2 gal
	RMS	2	Rhododendron maximum / Rose Bay	B & B	30" - 36"
	VA3	3	Viburnum dentatum / Viburnum	CONT	2 gal

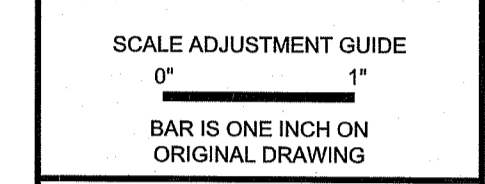
PERENNIALS	QTY	BOTANICAL / COMMON NAME	CONT/FLAT	SIZE	SPACING
	81	Liriope muscari 'Variegata' / Variegated Lilyturf	CONT.	1 gal	14" o.c.



Environmental Management  
OCT 12 2021  
Water Resources



OWNER  
BOURNE MILLS, LLC  
C/O THE ARMORY  
REVIVAL COMPANY  
334 BROADWAY  
PROVIDENCE, RI 02909



**BOURNE MILL REDEVELOPMENT**  
AP 102, LOTS 400 & 401  
1 MILL STREET  
TIVERTON, RHODE ISLAND

REVISIONS:

NO.	DATE	DESCRIPTION

PROJECT NO.: 19007.01  
DATE: OCTOBER 8, 2021  
SCALE: 1"=20'  
DESIGNED BY: DCS  
CHECKED BY: DCS  
DRAWN BY: DCS  
APPROVED BY: DCS  
DRAWING TITLE:  
**LANDSCAPE PLAN**  
DRAWING NO.:  
**L1.0**  
SHEET NO. 12 OF 12