

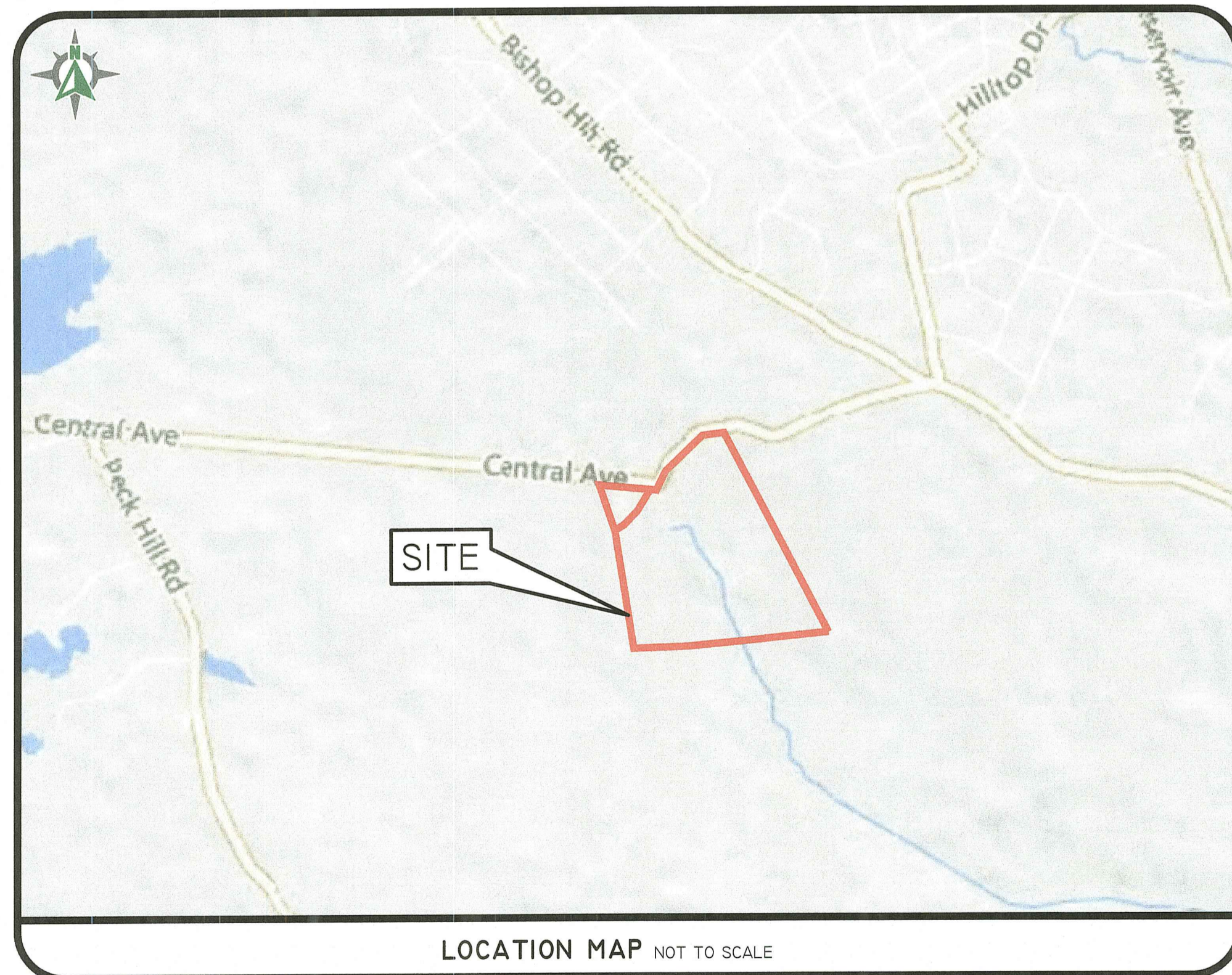
PRELIMINARY DETERMINATION SUBMISSION

CENTRAL AVENUE SOLAR

1257 AND 1260 CENTRAL AVENUE

JOHNSTON, RI

ASSESSOR'S PLAT 43 LOTS 70 AND 95



SHEET INDEX

- 1 COVER SHEET
- 2 AERIAL HALF-MILE RADIUS & USGS MAP
- 3 NOTES AND LEGEND
- 4 EXISTING ANALYSIS PLAN
- 5 SOIL EROSION & SEDIMENT CONTROL PLAN
- 6 SITE LAYOUT PLAN
- 7 GRADING & DRAINAGE PLAN - 1
- 8 GRADING & DRAINAGE PLAN - 2
- 9 POND DETAILS
- 10 SESC DETAIL SHEET
- 11 DETAIL SHEET
- 12 INTERCONNECTION PLAN



RI DEPARTMENT OF ENVIRONMENTAL MANAGEMENT
OFFICE OF WATER RESOURCES
FRESHWATER WETLANDS PROGRAM

NOTE PER DEM:

Kindly be advised that this Permit is not equivalent to a verification of the type or extent of freshwater wetlands on site

RI DEPARTMENT OF ENVIRONMENTAL MANAGEMENT
OFFICE OF WATER RESOURCES
FRESHWATER WETLANDS PROGRAM
APPROVED WITH CONDITIONS AS SPECIFIED IN THE LETTER OF APPROVAL
DATED: APR 24 2023 FILE # 22-0059
NO CHANGES ALLOWED WITHOUT PRIOR APPROVAL
APPROVED PLANS MUST BE AT CONSTRUCTION SITE

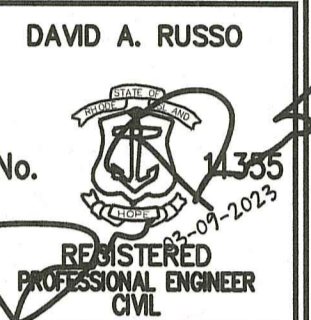
Nancy L. Freeman

See Revised Sheet 7 of 12.

Diprete Engineering

Two Stafford Court Cranston, RI 02920
tel: 401-943-1000 fax: 401-464-6006 www.diprete-eng.com

Boston • Providence • Newport



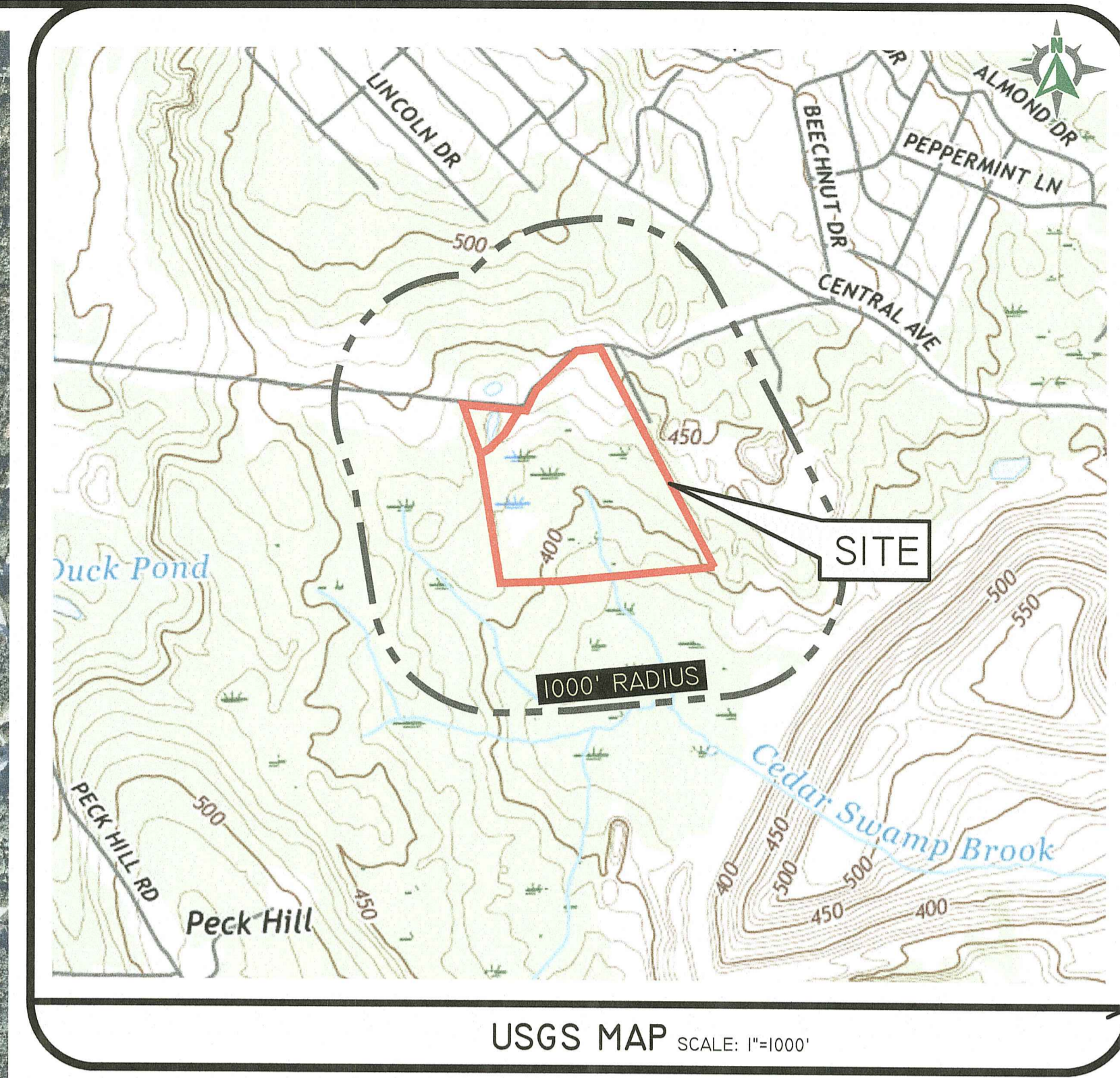
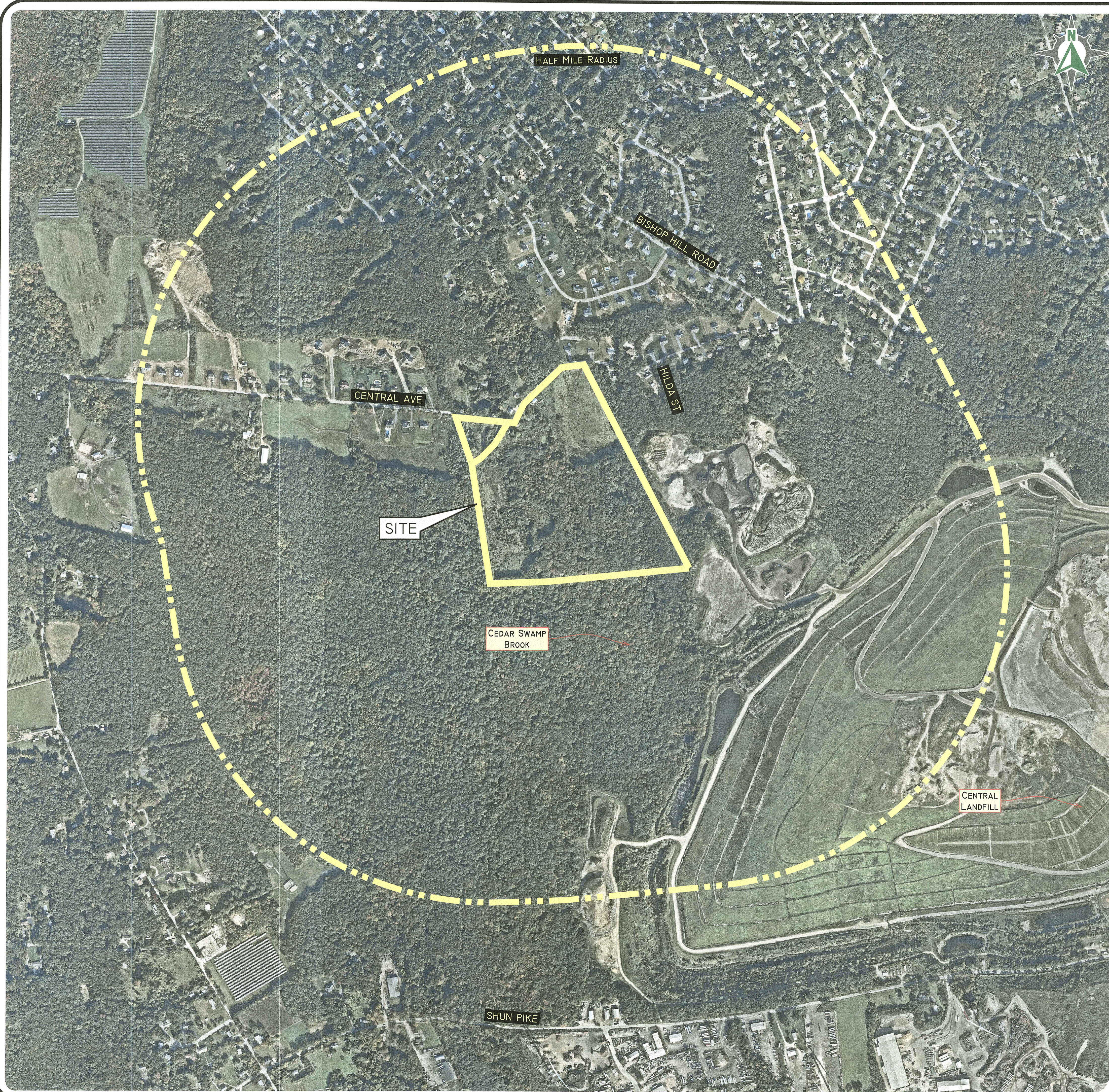
THIS PLAN SET MUST NOT BE USED FOR CONSTRUCTION PURPOSES UNLESS STAMPED, ISSUED FOR CONSTRUCTION AND STAMPED BY A PROFESSIONAL ENGINEER OF DIPRETE ENGINEERING.

DIPRETE ENGINEERING ONLY WARRANTS PLANS ON A DIPRETE PROFESSIONAL ENGINEER OF DIPRETE ENGINEERING. DIPRETE ENGINEERING DOES NOT WARRANT PLANS BY ANY OTHER PARTY. METEOROLOGICAL, SEISMIC, GEOTECHNICAL, AND OTHER DATA CONFORMANCE IN THE IMPLEMENTATION OF THIS PLAN AND EXISTING UTILITIES SHOWN ON THIS PLAN ARE APPROXIMATE ONLY. DIPRETE ENGINEERING ASSUMES NO RESPONSIBILITY FOR THE ACCURACY OF EXISTING UTILITIES SHOWN ON SHEET 3. SEE UTILITY NOTE ON SHEET 3.

NO.	DATE	DESCRIPTION	BY
1	1.0-2022	PREPARED FOR SUBMITTAL	J.A.R.
2	2.0-2022	REVISIONS TO COMMENTS	J.A.R.
3	3.0-2022	REVISIONS TO COMMENTS	J.A.R.
4	4.0-2022	REVISIONS TO COMMENTS	J.A.R.
5	5.0-2022	REVISIONS TO COMMENTS	J.A.R.
6	6.0-2022	REVISIONS TO COMMENTS	J.A.R.
7	7.0-2022	REVISIONS TO COMMENTS	J.A.R.
8	8.0-2022	REVISIONS TO COMMENTS	J.A.R.
9	9.0-2022	REVISIONS TO COMMENTS	J.A.R.
10	10.0-2022	REVISIONS TO COMMENTS	J.A.R.
11	11.0-2022	REVISIONS TO COMMENTS	J.A.R.
12	12.0-2022	REVISIONS TO COMMENTS	J.A.R.

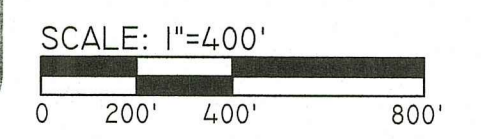
COVER SHEET
CENTRAL AVENUE SOLAR
ASSESSOR'S PLAT 43 LOTS 70 AND 95
JOHNSTON, RHODE ISLAND
PREPARED FOR:
REVITY ENERGY, LLC
117 METRO CENTER BLVD. WARWICK, RHODE ISLAND 02886

Z:\06MAIN\PROJECTS\23\23-029-CENTRAL AVENUE SOLAR\AUTOCAD DRAWINGS\23-029-CAD\DWG PLOTTER: 3/9/2023



USGS MAP SCALE: 1"=1000'

PHOTO OBTAINED FROM NEARMAP.
DATE OF PHOTOGRAPHY 10/07/2021.



RI DEPARTMENT OF ENVIRONMENTAL MANAGEMENT
OFFICE OF WATER RESOURCES
FRESHWATER WETLANDS PROGRAM
APPROVED WITH CONDITIONS AS
SPECIFIED IN THE LETTER OF APPROVAL
DATED: APR 24 2023 FILE #: 22-0059
NO CHANGES ALLOWED WITHOUT PRIOR APPROVAL
APPROVED PLANS MUST BE AT CONSTRUCTION SITE
Nancy L. Freeman

DiPrete Engineering
Two Stafford Court Cranston, RI 02920
tel. 401-943-1000 fax. 401-464-6006 www.diprete-eng.com
Boston • Providence • Newport

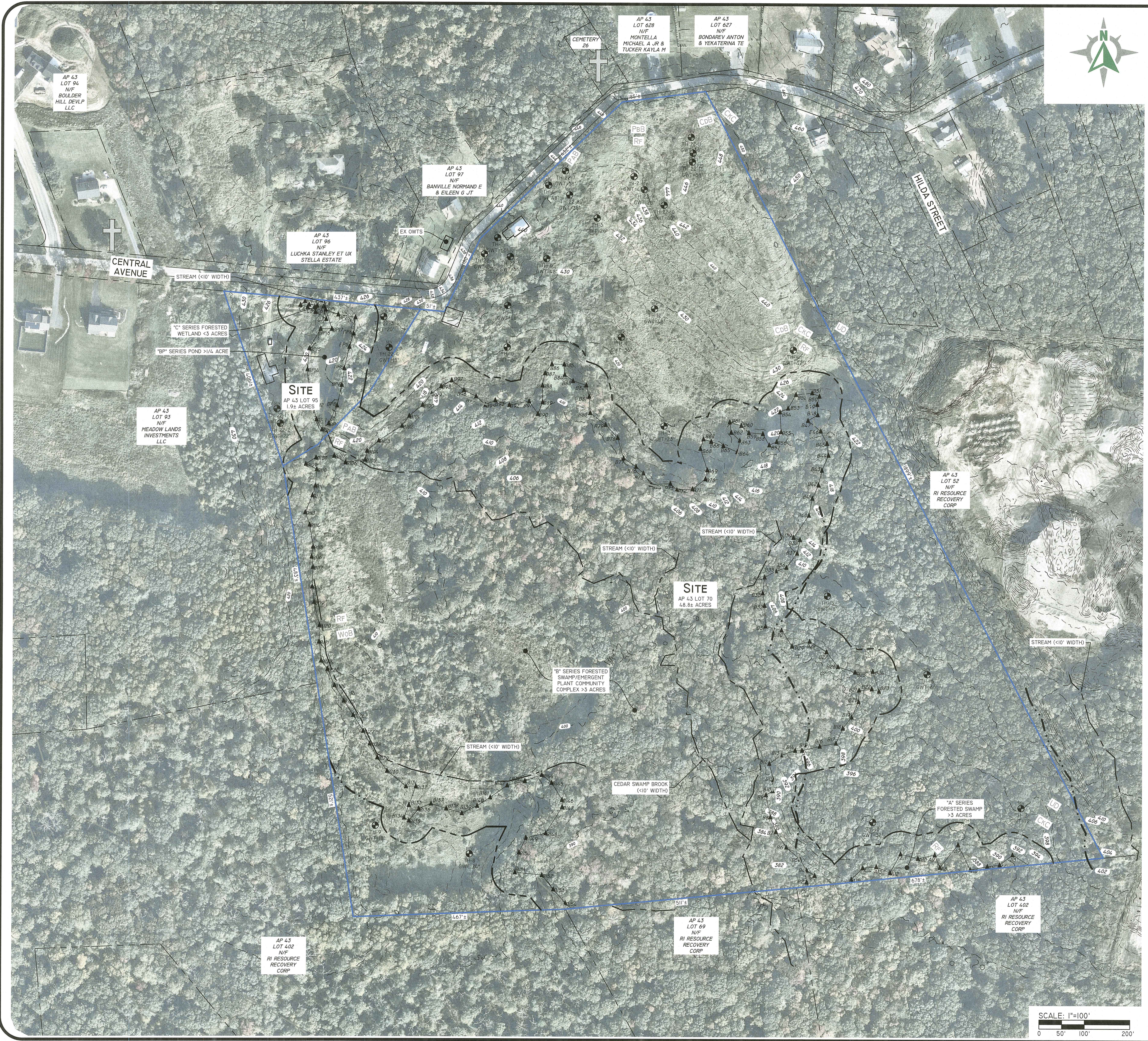
DAVID A. RUSSO
No. 14355
REGISTERED PROFESSIONAL ENGINEER
CIVIL

THIS PLAN SET MUST NOT BE USED FOR CONSTRUCTION PURPOSES UNLESS IT IS PROPERLY REPRODUCED AND STAMPED BY THE REGISTERED PROFESSIONAL ENGINEER CONSISTENT WITH ENGINEERING.
DIPRETE ENGINEERING ONLY WARRANTS PLANS ON A DIPRETE PROFESSIONAL ENGINEER OF DIPRETE ENGINEERING. DIPRETE ENGINEERING DOES NOT WARRANT PLANS BY ANY OTHER PARTY. METHOD, SAFETY, PRECAUTIONS AND REQUIREMENTS, AND DESIGN PERFORMANCE IN THE IMPLEMENTATION OF THIS PLAN AND EXISTING UTILITIES SHOWN ON THIS PLAN ARE APPROXIMATE ONLY. DIPRETE ENGINEERING ASSUMES NO RESPONSIBILITY FOR THE ACCURACY OF ANY UTILITIES OR EXISTING UTILITIES. SEE UTILITY NOTES ON SHEET 5.

NO.	DATE	DESCRIPTION	BY
1	3-12-2023	ORDER - RESPONSE TO COMMENTS	J.A.R.
2	4-12-2023	ORDER - ORDER SUBMITTAL	J.A.R.
3	4-12-2023	ORDER - PRELIMINARY SUBMISSION	J.A.R.
4	4-12-2023	ORDER - PRELIMINARY SUBMISSION	J.A.R.
5	4-12-2023	ORDER - PRELIMINARY SUBMISSION	J.A.R.
6	4-12-2023	ORDER - PRELIMINARY SUBMISSION	J.A.R.
7	4-12-2023	ORDER - PRELIMINARY SUBMISSION	J.A.R.
8	4-12-2023	ORDER - PRELIMINARY SUBMISSION	J.A.R.

AERIAL HALF-MILE RADIUS & USGS MAP
CENTRAL AVENUE SOLAR
ASSESSOR'S PLAT 43 LOTS 70 AND 95
JOHNSTON, RHODE ISLAND
PREPARED FOR:
REVITY ENERGY, LLC
117 METRO CENTER BLDG., WARWICK, RHODE ISLAND 02886
SHEET 2 OF 12

DE. JOB NO. 23-029 COPYRIGHT 2023 BY DIPRETE ENGINEERING ASSOCIATES, INC.



Existing Analysis Notes:

1. BENCHMARK TO BE PROVIDED ON INDIVIDUAL OWTS DESIGNS WHEN COMPLETED.



DiPrete Engineering

Two Stafford Court Cranston, RI 02920
tel 401-943-1000 fax 401-464-6006 www.diprete-eng.com

Boston • Providence • Newport

DAVID A. RUSSO
No. 14355
REGISTERED PROFESSIONAL ENGINEER CIVIL

THIS PLAN SET MUST NOT BE USED FOR CONSTRUCTION PURPOSES UNLESS APPROVED BY THE RI DEPARTMENT OF ENVIRONMENTAL MANAGEMENT. THE CONTRACTOR IS RESPONSIBLE FOR ALL OF THE FIELD SURVEY, METHODS, SAFETY PRECAUTIONS AND REQUIREMENTS, AND OSHA REGULATIONS IN THE IMPLEMENTATION OF THIS PLAN AND DESIGN. EXISTING UTILITIES SHOWN ON THIS PLAN ARE APPROXIMATE AND NOT TO BE RELIED UPON FOR CONSTRUCTION. THE CONTRACTOR SHALL VERIFY THE LOCATION AND DEPTH OF ALL UTILITIES. SEE UTILITY NOTE ON SHEET 3.

NO.	DATE	DESCRIPTION	BY	CHKD
1	3-22-2023	DESIGN RESPONSE TO COMMENTS	J.W.S.	J.W.S.
2	3-22-2023	DESIGN RESPONSE TO COMMENTS	J.W.S.	J.W.S.
3	3-22-2023	DESIGN RESPONSE TO COMMENTS	J.W.S.	J.W.S.
4	3-22-2023	DESIGN RESPONSE TO COMMENTS	J.W.S.	J.W.S.
5	3-22-2023	DESIGN RESPONSE TO COMMENTS	J.W.S.	J.W.S.
6	3-22-2023	DESIGN RESPONSE TO COMMENTS	J.W.S.	J.W.S.
7	3-22-2023	DESIGN RESPONSE TO COMMENTS	J.W.S.	J.W.S.
8	3-22-2023	DESIGN RESPONSE TO COMMENTS	J.W.S.	J.W.S.
9	3-22-2023	DESIGN RESPONSE TO COMMENTS	J.W.S.	J.W.S.
10	3-22-2023	DESIGN RESPONSE TO COMMENTS	J.W.S.	J.W.S.

RI DEPARTMENT OF ENVIRONMENTAL MANAGEMENT
OFFICE OF WATER RESOURCES
FRESHWATER WETLANDS PROGRAM

NOTE PER DEM:
Kindly be advised that this Permit is not equivalent to a verification of the type or extent of freshwater wetlands on site

RI DEPARTMENT OF ENVIRONMENTAL MANAGEMENT
OFFICE OF WATER RESOURCES
FRESHWATER WETLANDS PROGRAM
APPROVED WITH CONDITIONS AS SPECIFIED IN THE LETTER OF APPROVAL
DATED: APR 24 2023 FILE #: 22-0059
NO CHANGES ALLOWED WITHOUT PRIOR APPROVAL
APPROVED PLANS MUST BE AT CONSTRUCTION SITE
Nancy L. Freeman

EXISTING ANALYSIS PLAN
CENTRAL AVENUE SOLAR
ASSESSOR'S PLAT 43 LOTS 70 AND 95
JOHNSTON, RHODE ISLAND

PREPARED FOR:
REVITY ENERGY, LLC
117 METRO CENTER BLVD. WARWICK, RHODE ISLAND 02886

DE JOB NO. 24-02-024 COPYRIGHT 2023 BY DIPRETE ENGINEERING ASSOCIATES, INC.

Solar SESC Phases

- PHASE A INSTALL CONSTRUCTION ACCESS, INLET SEDIMENT CONTROL, CUT TREES, STUMPS REMAIN IN PLACE (NOT DEPICTED)
 - PHASE B INSTALL LIMIT OF DISTURBANCE SESC
 - PHASE C INSTALL ACCESS ROAD, DRAINAGE SWALES, AND TEMP PONDS AS NEEDED, PROTECT INFILTRATION AREAS WITH SILT BARRIERS
 - PHASES D-E* SOLAR PANEL INSTALLATION, CLEAR AND GRUB STUMPS, ADD FIBER ROLLS/COMPOST SOCKS ON SLOPES, STOCKPILE TOP SOIL, FINE GRADE, ESTABLISH VEGETATIVE COVER (SEE SOLAR SESC PROTOCOL THIS SHEET).
- *PHASES MAY BE BUILT IN ANY ORDER AND LIMITS REVISED AS NECESSARY TO CONSTRUCT SITE. MULTIPLE PHASES MAY BE CONSTRUCTED AT THE SAME TIME SO LONG AS THEY CAN MEET ALL REQUIREMENTS AS NOTED ON THIS PLAN AND SHEET 3.

Residential SESC Phases

- PHASE A INSTALL CONSTRUCTION ACCESS, INLET SEDIMENT CONTROL, CUT TREES, STUMPS REMAIN IN PLACE (NOT DEPICTED)
- PHASE B INSTALL LIMIT OF DISTURBANCE SESC
- PHASE C. PROTECT INFILTRATION AREAS WITH SILT BARRIERS, STABILIZE AREAS.
- PHASES D-1* INDIVIDUAL LOT CONSTRUCTION INSTALL LIMIT OF DISTURBANCE SESC ON LOTS, CONSTRUCT HOMES AND STABILIZE.

Soil Erosion & Sediment Control Legend:

- LIMIT OF DISTURBANCE (WITH SEDIMENT CONTROL)
- CONSTRUCTION ENTRANCE (RIDOT STD 9.9.0)
- INFILTRATING AREA (TO BE PROTECTED BY COMPOST SOCK OR SILT FENCE)
- FINAL CONTOUR GRADE
- INLET SEDIMENT CONTROL
- DOUBLE EROSION CONTROL (COMPOST SOCK, SILT FENCE (RI STD 9.2.0) OR APPROVED EQUAL)
- EROSION CONTROL (COMPOST SOCK, SILT FENCE (RI STD 9.2.0) OR APPROVED EQUAL)
- DIVERSION RUNOFF CONVEYANCE MEASURE (SWALE AND/OR BERM)
- SLOPES STEEPER THAN 15%
- STONE INFILTRATION TRENCH

General Notes:

- SEE SOIL EROSION AND SEDIMENTATION CONTROL NOTES ON SHEET 3.
- THESE PLANS MUST BE READ IN CONJUNCTION WITH THE SOIL EROSION AND SEDIMENT CONTROL PLAN BY DIPRETE ENGINEERING (CURRENT EDITION).
- SEDIMENT EROSION CONTROL PHASING TO MINIMIZE DISTURBANCE TO THE MAXIMUM EXTENT PRACTICABLE. SEE SOLAR SESC PROTOCOL FOR ADDITIONAL GUIDANCE.
- STAGING, STOCKPILE AND CONCRETE WASHOUT AREAS SHOWN ON THE PLANS ARE INDICATIVE ONLY. ACTUAL STAGING, STOCKPILE AND WASHOUT AREAS WILL BE DRIVEN BY CONSTRUCTION OPERATIONS AND SITE CONDITIONS, SO LONG AS THEY REMAIN COMPLIANT WITH ALL APPLICABLE REGULATIONS AND GUIDANCE DOCUMENTS.
- IF THE SOLAR SESC PROTOCOL CANNOT BE USED DUE TO SEASON OF CONSTRUCTION, CONSTRUCTION LIMITATIONS, OR OTHER FACTORS, A REVISED SESC PLAN WILL BE REQUIRED USING SEDIMENT TRAPS AND/OR SEDIMENT BASINS, EXAMPLE SEDIMENT TRAP DETAIL AND SIZING HAVE BEEN PROVIDED ON THIS SHEET. IF SESC PROTOCOL IS NOT FOLLOWED, SEDIMENT TRAPS ARE NOT TO BE PLACED IN LOCATIONS OF INFILTRATION PRACTICES.

Inspection & Maintenance:

- ALL CLEARED AREAS MUST BE INSPECTED BY THE DESIGN ENGINEER AND/OR A REPRESENTATIVE OF HYDROGRASS TECHNOLOGIES INC. FOLLOWING EACH AND EVERY CLEARING AND STABILIZATION PHASE, AND AFTER COMPLETION OF WORKS:
- NO MORE THAN 5 DAYS AFTER THE INITIAL APPLICATION OF THE SESC PROTOCOL.
 - ONCE EVERY 2 WEEKS THEREAFTER, UNTIL SUITABLE, SELF-SUSTAINING GRASS COVER HAS BEEN ACHIEVED.
 - BEYOND THE FREQUENCY LISTED IN 1 AND 2 ABOVE, INSPECTIONS MUST BE UNDERTAKEN FOLLOWING RAINFALL EQUAL TO OR GREATER THAN THE 1-YEAR 24-HOUR TYPE III STORM EVENT (2.7" OF RAINFALL).
- ANY AREAS DEEMED INADEQUATE MUST BE REPAIRED AND/OR REINSTATED IMMEDIATELY, SUFFICIENT TO PREVENT DETRIMENT TO DOWNSTREAM SENSITIVE AREAS, TO THE SATISFACTION OF THE DESIGN ENGINEER/ REPRESENTATIVE OF HYDROGRASS.

Solar SESC Protocol:

- THE FOLLOWING METHODOLOGY IS TYPICAL FORMULATION FOR SOLAR SITES.
- NOTE: PRIOR TO CONSTRUCTION, ON SITE TESTING MUST BE PERFORMED BY HYDROGRASS TECHNOLOGIES INC. (OR OTHER COMPANY APPROVED BY DESIGN ENGINEER AND SOLAR DEVELOPER) TO DETERMINE FINAL PROTOCOL, GROWTH MEDIUM SELECTION, MIX RATIOS BASED ON THE SOILS SPECIFIC TO THE PROJECT SITE. FINAL FORMULATION MUST BE PROVIDED TO DESIGN ENGINEER PRIOR TO THE START OF CONSTRUCTION.
- CONTRACTOR MAY USE OTHER SIMILAR TECHNOLOGIES ONLY WITH WRITTEN APPROVAL FROM DESIGN ENGINEER AND SOLAR DEVELOPER, AND MUST STILL COMPLY WITH THE NOTE ABOVE.
- THE RECOMMENDED PHASE SIZES AS SHOWN ON THIS PLAN HAVE BEEN BASED ON WHAT CAN REASONABLY BE STABILIZED USING THE BELOW PROTOCOL, PER ADVICE FROM HYDROGRASS TECHNOLOGIES, INC. (SEE ANCILLARY NOTE 2).
- THE PROTOCOL BELOW IS TO BE APPLIED FOR EACH CLEARING & STABILIZATION PHASE AS SHOWN ON THE PLANS:
- INSTALL SILT FENCE/SEDIMENTATION BARRIER AT LIMIT OF DISTURBANCE.
 - CLEAR, GRUB AND GRADE THE PHASE AREA.
 - AT TIME OF CLEARING/GRUBBING/GRADING, EXCAVATE ANY TEMPORARY OR PERMANENT SWALES/ DIVERSION CHANNELS AND INSTALL THE PROPOSED DETENTION PONDS.
 - AS SOON AS POSSIBLE FOLLOWING CLEARING/GRUBBING/GRADING BUT NO LONGER THAN 4 DAYS, IMPLEMENT THE FOLLOWING PROTOCOL:
 - HYDRAULICALLY APPLY "SOLAR MIX" SEED MIX BY VALLEY GREEN, 19-19-19 STARTER FERTILIZER BY VALLEY GREEN, AND EARTHSTOP 500 SERIES POLYACRYLAMIDE BY GEOWORKS. FINAL RATIO OF EACH PRODUCT TO BE APPLIED IN ACCORDANCE WITH MANUFACTURER RECOMMENDATIONS, BUT NOT LESS THAN:
 - SOLAR MIX: 250 lbs PER ACRE
 - EARTHSTOP: 15 lbs PER ACRE ON SLOPES LESS THAN OR EQUAL TO 3%; 25 lbs PER ACRE ON SLOPES GREATER THAN 3%.
 - APPLY STRAW MULCH AT 4 TONS PER ACRE AS NEEDED FOR TEMPORARY EROSION CONTROL.
 - HYDRAULICALLY APPLY WATER COMBINED WITH EARTHSTOP 500 SERIES POLYACRYLAMIDE BY GEOWORKS AND GUAR GUM TO BOND STRAW TO SOIL. RATIOS OF EACH PRODUCT MUST BE APPLIED IN ACCORDANCE WITH MANUFACTURER RECOMMENDATIONS, BUT NOT LESS THAN:
 - WATER: 1,400 gal PER ACRE
 - GUAR GUM: 250 lbs PER ACRE
 - EARTHSTOP: 15 lbs PER ACRE ON SLOPES LESS THAN OR EQUAL TO 3%; 25 lbs PER ACRE ON SLOPES GREATER THAN 3%
 - THE PROPOSED USE OF POLYACRYLAMIDE MATERIAL FOR EROSION CONTROL MUST BE RESTRICTED ONLY TO AREAS BEYOND A 100' DISTANCE FROM WATERS OF THE STATE INCLUDING AREAS OF BIOLOGICAL WETLANDS AS INDICATED ON THE SITE PLANS.
 - ANCILLARY NOTES:
 - ALL MIX COMPONENTS AND ADMIXTURES INCLUDING (BUT NOT LIMITED TO) BIOPOLYMERS, MUST BE 100% NON TOXIC.
 - PER ADVICE FROM HYDROGRASS TECHNOLOGIES INC., THE ABOVE PROTOCOL CAN BE REASONABLY APPLIED TO A MAXIMUM AREA OF 10 ACRES PER DAY, IN ACCORDANCE WITH THE RISESCH A MAXIMUM AREA OF 5 ACRES CAN BE DISTURBED AT ANY TIME.
 - SHOULD THE ABOVE PROTOCOL BE APPLIED AND DEEMED INADEQUATE TO SUFFICIENTLY STABILIZE ANY AREAS IN THE OPINION OF THE DESIGN ENGINEER OR AUTHORITY HAVING JURISDICTION, THE DEFICIENT AREA(S) MUST BE STABILIZED USING NON-VEGETATIVE MEASURES IN ACCORDANCE WITH THE RISESCH.
 - TYPICAL SEDIMENT TRAP DETAIL AND PARAMETERS CAN BE FOUND ON SHEET 5. HOWEVER MORE MEASURES MAY BE REQUIRED.
 - AREAS NOT STABILIZED BY NOVEMBER 15 MUST BE STABILIZED BY NON- VEGETATIVE EROSION CONTROL MEASURES IN ACCORDANCE WITH THE RISESCH.
 - IF EARTHWORK OCCURS BETWEEN OCT 15 - APRIL 15 (OUTSIDE THE GROWING SEASON), DISTURBED AREAS MUST BE STABILIZED WITHIN 5 DAYS USING NON-VEGETATIVE MEASURES. ADDITIONALLY, SEDIMENT TRAPS AND/OR SEDIMENT BASINS MAY BE REQUIRED. ANY SEDIMENT TRAP/BASIN MUST BE DESIGNED, INSTALLED AND MAINTAINED PER THE RISESCH.
 - AT THE TOE OF SLOPES GREATER THAN 5H:1V, WATTLES AND FIBER ROLLS MUST BE AT LEAST 20 INCHES IN DIAMETER. AN EQUIVALENT INSTALLATION, SUCH AS STACKED SMALLER-DIAMETER FIBER ROLLS, CAN BE USED TO ACHIEVE A SIMILAR LEVEL OF PROTECTION.

RI DEPARTMENT OF ENVIRONMENTAL MANAGEMENT
OFFICE OF WATER RESOURCES
FRESHWATER WETLANDS PROGRAM
APPROVED WITH CONDITIONS AS
SPECIFIED IN THE LETTER OF APPROVAL
DATED: 08/23/2023 FILE #: 22-0059
NO CHANGES ALLOWED WITHOUT PRIOR APPROVAL
APPROVED PLANS MUST BE AT CONSTRUCTION SITE
Nancy L. Freeman

GENERAL NOTES:

- THE TEMPORARY SEDIMENT TRAP SHALL MEET ALL REQUIREMENTS FOR TEMPORARY SEDIMENT TRAPS OUTLINED IN THE RHODE ISLAND SOIL EROSION AND SEDIMENT CONTROL HANDBOOK (LATEST REVISION) SECTION SIX: SEDIMENT CONTROL MEASURES
- THE TEMPORARY SEDIMENT TRAP MUST PROVIDE A STORAGE VOLUME FOR ONE INCH OF RUNOFF FROM THE CONTRIBUTING AREA. HALF OF THE STORAGE MUST BE PROVIDED IN THE FORM OF WET STORAGE. SEE DETAIL BELOW SECTION 6 OF THE RISESCH.
- ALL CUT AND FILL SLOPES MUST BE 2:1 OR FLATTER EXCEPT FOR THE EXCAVATED WET STORAGE AREA WHERE SLOPES MUST NOT EXCEED 1.5:1.
- THE OUTLET MUST BE LOCATED AT THE MOST DISTANT HYDRAULIC POINT FROM THE INLET.
- THE OUTLET CONSISTS OF A PERVIOUS STONE DIKE WITH A CORE OF MODIFIED RIPRAP AND FACED ON THE UPSTREAM SIDE WITH STONE.
- TEMPORARY SEDIMENT TRAPS MUST OUTLET ONTO STABILIZED GROUND.
- MAXIMUM HEIGHT OF A TEMPORARY SEDIMENT TRAP IS LIMITED TO 5 FEET (BOTTOM OF DRY STORAGE TO TOP OF EMBANKMENT). TOTAL EMBANKMENT HEIGHT MUST NOT EXCEED 6 FEET (BOTTOM OF WET STORAGE TO TOP OF EMBANKMENT).
- SIDE SLOPES OF THE EMBANKMENT MUST BE 2:1 OR FLATTER.
- MODIFIED RIPRAP: SHALL MEET THE REQUIREMENTS OF RIDOT STANDARD SPECIFICATIONS FOR ROAD AND BRIDGE CONSTRUCTION SUBSECTION M.10.03.2.
- FILTER STONE: SHALL MEET THE REQUIREMENTS OF RIDOT STANDARD SPECIFICATIONS FOR ROAD AND BRIDGE CONSTRUCTION SUBSECTION M.01.03 TABLE 1, COLUMN V FILTER STONE.

INSPECTION, MAINTENANCE, AND REMOVAL REQUIREMENTS:

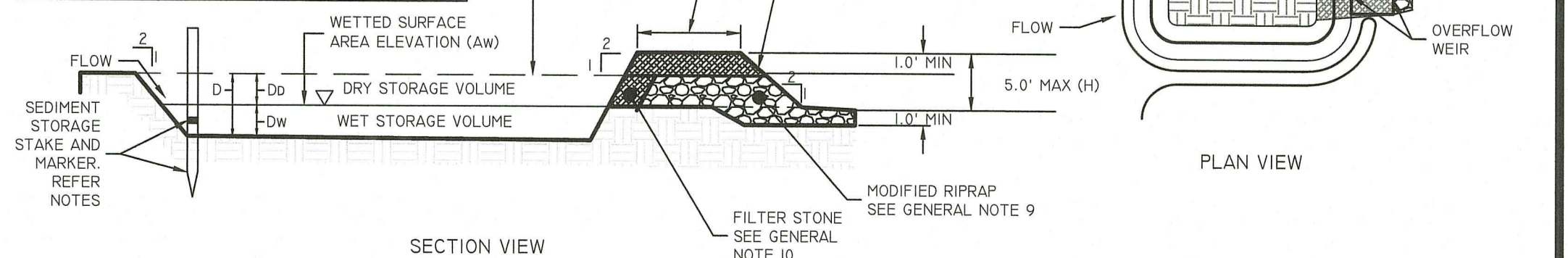
- INSTALL "SEDIMENT STORAGE" STAKE WITH A MARKER AT ONE HALF OF THE WET STORAGE VOLUME.
- INSPECT THE TEMPORARY SEDIMENT TRAP AT LEAST ONCE A WEEK AND WITHIN 24 HOURS OF THE END OF A STORM WITH A RAINFALL AMOUNT OF 0.25 INCH OR GREATER.
- CHECK THE OUTLET TO ENSURE THAT IT IS STRUCTURALLY SOUND AND HAS NOT BEEN DAMAGED BY EROSION OR CONSTRUCTION EQUIPMENT.
- CHECK FOR SEDIMENT ACCUMULATION AND FILTRATION PERFORMANCE.
- WHEN SEDIMENTS HAVE ACCUMULATED TO ONE HALF THE MINIMUM REQUIRED VOLUME OF THE WET STORAGE, DEWATER THE TRAP AS NEEDED, REMOVE SEDIMENTS AND RESTORE THE TRAP TO ITS ORIGINAL DIMENSIONS.
- DISPOSE OF THE SEDIMENT REMOVED FROM THE BASIN IN A SUITABLE AREA AS DESIGNATED BY THE GEOTECHNICAL ENGINEER.
- THE TEMPORARY SEDIMENT TRAP MAY BE REMOVED AFTER THE CONTRIBUTING DRAINAGE AREA IS STABILIZED.

INSTALLATION NOTES:

- CLEAR, GRUB AND STRIP ANY VEGETATION AND ROOT MAT FROM ANY PROPOSED EMBANKMENT AND OUTLET AREA.
- REMOVE STONES AND ROCKS WHOSE DIAMETER IS GREATER THAN THREE (3) INCHES AND OTHER DEBRIS.
- EXCAVATE WET STORAGE AND CONSTRUCT THE EMBANKMENT AND/OR OUTLET AS NEEDED TO ATTAIN THE NECESSARY STORAGE REQUIREMENTS.
- USE ONLY FILL MATERIAL FOR THE EMBANKMENT THAT IS FREE FROM EXCESSIVE ORGANICS, DEBRIS, LARGE ROCKS (OVER SIX (6) INCHES) OR OTHER UNSUITABLE MATERIALS. COMPACT THE EMBANKMENT IN 9-INCH LAYERS BY TRAVERSING WITH EQUIPMENT WHILE IT IS BEING CONSTRUCTED.
- STABILIZE THE EARTHEN EMBANKMENT USING ANY OF THE FOLLOWING MEASURES: SEEDING FOR TEMPORARY VEGETATION COVER; SEEDING FOR PERMANENT VEGETATIVE COVER, OR SLOPE PROTECTION, IMMEDIATELY AFTER INSTALLATION.

*TRAP DIMENSIONS REPRESENT MINIMUM REQUIRED SIZING TO MEET THE RISESCH. CONTRACTOR MAY SHAPE TRAP DIFFERENTLY THAN SHOWN ON PLANS AS LONG AS THE MINIMUM SIZING HAS BEEN PROVIDED.

MINIMUM TOP WIDTH VS HEIGHT	
H (FT)	W (FT)
1.5	2.0
2.0	2.5
2.5	3.0
3.0	3.5
4.0	4.5
5.0	5.0



TEMPORARY SEDIMENT TRAP DETAIL (IF NEEDED)

SCALE: 1"=100'
0 50' 100' 200'

Note: This Plan Must Be Reproduced in Color

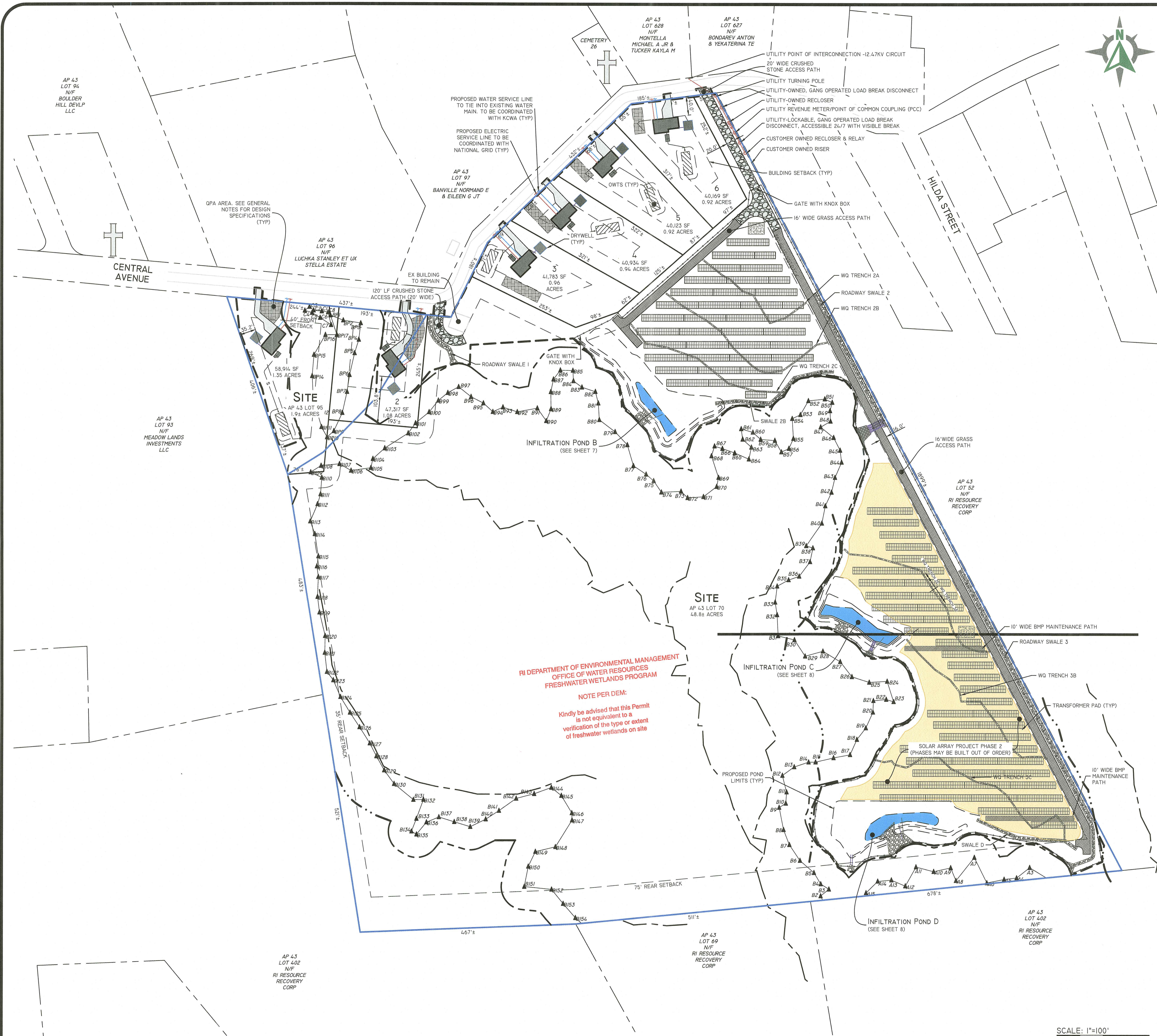
DiPrete Engineering
Two Stafford Court Cranston, RI 02920
tel 401-943-1000 fax 401-464-6006 www.diprete-eng.com
Boston • Providence • Newport

DAWD A. RUSSO
No. 14355
REGISTERED PROFESSIONAL ENGINEER
CIVIL

THIS PLAN SET MUST NOT BE USED FOR CONSTRUCTION PURPOSES UNLESS IT IS STAMPED BY A REGISTERED PROFESSIONAL ENGINEER OF DIPRETE ENGINEERING.
DIPRETE ENGINEERING ONLY WARRANTS PLANS ON A DIPRETE PROFESSIONAL ENGINEER'S SEAL AND SIGNATURE. THE CONTRACTOR SHALL BE RESPONSIBLE FOR ANY OTHER PARTY'S METHODS, SAFETY, PRECATIONS AND REQUIREMENTS, AND OSHA DESIGN. ANY CHANGES IN THE REPRESENTATION OF THIS PLAN AND EXISTING UTILITIES SHOWN ON THIS PLAN ARE APPROPRIATE FOR ONLY. DIPRETE ENGINEERING ASSUMES NO RESPONSIBILITY FOR THE ACCURACY OF ANY UTILITIES SHOWN ON SHEET 3. SEE UTILITY NOTE ON SHEET 3.

NO.	REVISION	DATE	BY	CHKD.	APP'D.
1	ISSUE FOR PERMIT	08/23/2023	J.A.R.		
2	REVISED PER COMMENTS	08/23/2023	J.A.R.		
3	REVISED PER COMMENTS	08/23/2023	J.A.R.		
4	REVISED PER COMMENTS	08/23/2023	J.A.R.		
5	REVISED PER COMMENTS	08/23/2023	J.A.R.		
6	REVISED PER COMMENTS	08/23/2023	J.A.R.		
7	REVISED PER COMMENTS	08/23/2023	J.A.R.		
8	REVISED PER COMMENTS	08/23/2023	J.A.R.		
9	REVISED PER COMMENTS	08/23/2023	J.A.R.		
10	REVISED PER COMMENTS	08/23/2023	J.A.R.		
11	REVISED PER COMMENTS	08/23/2023	J.A.R.		
12	REVISED PER COMMENTS	08/23/2023	J.A.R.		
13	REVISED PER COMMENTS	08/23/2023	J.A.R.		
14	REVISED PER COMMENTS	08/23/2023	J.A.R.		
15	REVISED PER COMMENTS	08/23/2023	J.A.R.		
16	REVISED PER COMMENTS	08/23/2023	J.A.R.		
17	REVISED PER COMMENTS	08/23/2023	J.A.R.		
18	REVISED PER COMMENTS	08/23/2023	J.A.R.		
19	REVISED PER COMMENTS	08/23/2023	J.A.R.		
20	REVISED PER COMMENTS	08/23/2023	J.A.R.		

SOIL EROSION & SEDIMENT CONTROL PLAN
CENTRAL AVENUE SOLAR
ASSESSOR'S PLAT 43 LOTS 70 AND 95
JOHNSTON, RHODE ISLAND
PREPARED FOR:
REVITY ENERGY, LLC
117 METRO CENTER BLVD., WARWICK, RHODE ISLAND 02886
DESIGN BY: J.A.R.
SHEET 5 OF 12



DEVELOPMENT DATA:

TOTAL SITE AREA:	50.7± ACRES
NUMBER OF EX BUILDINGS TO REMAIN:	1
RESIDENTIAL	
NUMBER OF PR LOTS:	6
TOTAL RESIDENTIAL LOT AREA:	5.9± ACRES
AVERAGE RESIDENTIAL LOT AREA:	0.98± ACRES
BEDROOMS PER DWELLING:	4
SOLAR	
NUMBER OF PR LOTS:	1
TOTAL SOLAR LOT AREA:	44.8± ACRES

DIMENSIONAL REGULATIONS:

CURRENT ZONING:	R-40	REQUIRED	PROVIDED
MINIMUM LOT AREA:	40,000 SF	40,000 SF	40,321 SF
MINIMUM FRONTAGE AND LOT WIDTH:	140'	140'	140'
MINIMUM FRONT AND CORNER SIDE YARD:	35'	35'	35.2'
MINIMUM SIDE YARD:	75'	75'	103.8'
MINIMUM REAR YARD:	30'	30'	30'
MAXIMUM STRUCTURE HEIGHT:	15'	15'	15'
MAXIMUM BUILDING COVERAGE:	15%	15%	3.7%

*LOT WIDTH AND FRONTAGE SHALL BE CONTINUOUS, NOT INTERRUPTED BY ANY OTHER LOT AND ON A TOWN-ACCEPTED ROAD. THE PROVISIONS OF THIS TABLE NOT WITHSTANDING, FOR THE PURPOSES OF CALCULATING MINIMUM LOT SIZE, MINIMUM LOT FRONTAGE, MINIMUM LOT WIDTH, MINIMUM YARD DIMENSIONS, MAXIMUM BUILDING COVERAGE, AND THE MAXIMUM NUMBER OF LOTS OR DWELLING UNITS PERMITTED IN A CONSERVATION DEVELOPMENT IN ANY ZONING DISTRICT WHERE PERMITTED, THE PROVISIONS OF §§ 340-145 THROUGH 340-151 SHALL APPLY.

**THE HEIGHT OF A WIRELESS TELECOMMUNICATIONS FACILITY SHALL BE IN ACCORDANCE WITH ARTICLE XXIII, ENTITLED "WIRELESS TELECOMMUNICATIONS FACILITIES."

QPA NOTE:
QPA AREAS MUST CONSIST OF A LOW-MAINTENANCE GRASS MIX WITH SLOPES LESS THAN 5%.

**RI DEPARTMENT OF ENVIRONMENTAL MANAGEMENT
OFFICE OF WATER RESOURCES
FRESHWATER WETLANDS PROGRAM**

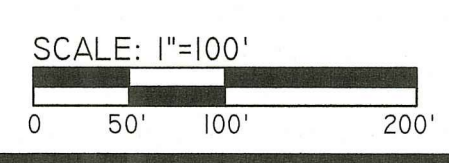
NOTE PER DEM:
Kindly be advised that this Permit is not equivalent to a verification of the type or extent of freshwater wetlands on site

**RI DEPARTMENT OF ENVIRONMENTAL MANAGEMENT
OFFICE OF WATER RESOURCES
FRESHWATER WETLANDS PROGRAM**

APPROVED WITH CONDITIONS AS SPECIFIED IN THE LETTER OF APPROVAL DATED: APR 29 2023 FILE #: 22-0059

NO CHANGES ALLOWED WITHOUT PRIOR APPROVAL APPROVED PLANS MUST BE AT CONSTRUCTION SITE

Nancy L. Freeman



Diprete Engineering

Two Stafford Court Cranston, RI 02920
tel: 401-943-1000 fax: 401-664-6006 www.diprete-eng.com

Boston • Providence • Newport

DAVID A. RUSSO

No. 14355

REGISTERED PROFESSIONAL ENGINEER
CIVIL

THIS PLAN SET MUST NOT BE USED FOR CONSTRUCTION PURPOSES UNLESS IT IS ISSUED FOR CONSTRUCTION AND IS STAMPED BY A REGISTERED PROFESSIONAL ENGINEER OF APPROPRIATE ENGINEERING.

DIPRETE ENGINEERING ONLY WARRANTS PLANS ON A DIPRETE ENGINEERING PROJECT. DIPRETE ENGINEERING, DIPRETE ENGINEERING DOES NOT WARRANT PLANS BY ANY OTHER PARTY. DIPRETE ENGINEERING ASSUMES NO RESPONSIBILITY FOR THE ACCURACY OF ANY INFORMATION PROVIDED BY OTHERS. DIPRETE ENGINEERING ASSUMES NO RESPONSIBILITY FOR THE ACCURACY OF ANY INFORMATION PROVIDED BY OTHERS. DIPRETE ENGINEERING ASSUMES NO RESPONSIBILITY FOR THE ACCURACY OF ANY INFORMATION PROVIDED BY OTHERS.

NO.	DATE	REVISION / COMMENTS	DRAWN	CHECKED	IN CHARGE
1	1-20-2023	ORDER - RESPONSE TO COMMENTS	J.A.R.	J.A.R.	J.A.R.
2	2-15-2023	ORDER - ORDER SITE SUSTAINABILITY SUBMISSION	J.A.R.	J.A.R.	J.A.R.
3	3-5-2023	ORDER - ORDER PRIMARY SUBMISSION REVISED	J.A.R.	J.A.R.	J.A.R.
4	3-5-2023	ORDER - ORDER PRIMARY SUBMISSION REVISED	J.A.R.	J.A.R.	J.A.R.
5	2-23-2023	ORDER - ORDER SUB - UTILITY LINE	J.A.R.	J.A.R.	J.A.R.
6	2-23-2023	ORDER - ORDER PRIMARY SUBMISSION	J.A.R.	J.A.R.	J.A.R.

DESIGN BY: D.A.R.

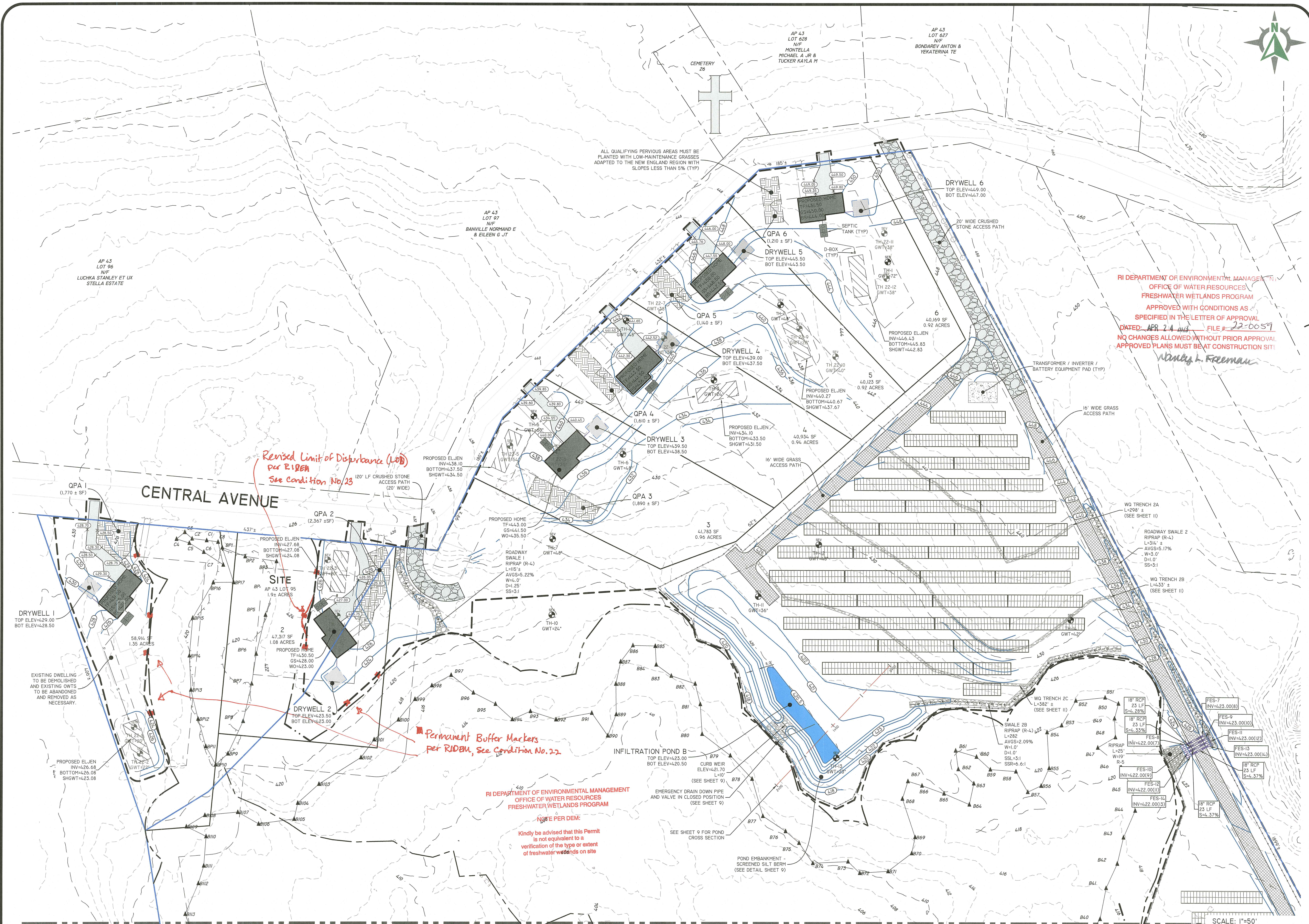
SITE LAYOUT PLAN

CENTRAL AVENUE SOLAR

ASSESSOR'S PLAT 43 LOTS 70 AND 95

JOHNSTON, RHODE ISLAND

PREPARED FOR:
REVITY ENERGY, LLC
117 METRO CENTER BLVD. WARWICK, RHODE ISLAND 02886



ALL QUALIFYING PERVIOUS AREAS MUST BE PLANTED WITH LOW-MAINTENANCE GRASSES ADAPTED TO THE NEW ENGLAND REGION WITH SLOPES LESS THAN 5% (TYP)

RI DEPARTMENT OF ENVIRONMENTAL MANAGEMENT
 OFFICE OF WATER RESOURCES
 FRESHWATER WETLANDS PROGRAM
 APPROVED WITH CONDITIONS AS SPECIFIED IN THE LETTER OF APPROVAL
 DATED: APR 24 2023 FILE # 22-0059
 NO CHANGES ALLOWED WITHOUT PRIOR APPROVAL
 APPROVED PLANS MUST BE AT CONSTRUCTION SITE!

Wendy L. Freeman

Revised Limit of Disturbance (LOD)
 per R1DEM
 See Condition No. 23

Permanent Buffer Markers
 per R1DEM, See Condition No. 23

RI DEPARTMENT OF ENVIRONMENTAL MANAGEMENT
 OFFICE OF WATER RESOURCES
 FRESHWATER WETLANDS PROGRAM

NOTE PER DEM:
 Kindly be advised that this Permit is not equivalent to a verification of the type or extent of freshwater wetlands on site

Diprete Engineering
 Two Stafford Court Cranston, RI 02920
 tel 401-943-1000 fax 401-664-6006 www.diprete-eng.com

Boston • Providence • Newport

DAVID A. RUSSO
 No. 14355
 REGISTERED PROFESSIONAL ENGINEER
 C.V.E.

THIS PLAN SET MUST NOT BE USED FOR CONSTRUCTION PURPOSES UNLESS IT IS STAMPED BY A REGISTERED PROFESSIONAL ENGINEER OF APPLICABLE JURISDICTION.
 DIPRETE ENGINEERING ONLY WARRANTS PLANS ON A DIPRETE PROFESSIONAL ENGINEER OF DIPRETE ENGINEERING. DIPRETE ENGINEERING DOES NOT WARRANT PLANS BY ANY OTHER PARTY. THE USER ASSUMES ALL LIABILITY FOR THE DESIGN, CONSTRUCTION, AND MAINTENANCE OF THE PROJECT. DIPRETE ENGINEERING ASSUMES NO RESPONSIBILITY FOR EXISTING UTILITIES SHOWN ON THIS PLAN OR APPROXIMATELY LOCATED UTILITIES SHOWN ON THIS PLAN. SEE UTILITY NOTE ON SHEET 5.

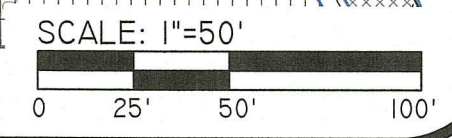
NO.	DATE	DESCRIPTION	BY	CHKD.
1	3-29-2023	RIDEM - RESPONSE TO COMMENTS	J.A.R.	J.A.R.
2	4-10-2023	RIDEM - OWS SITE SUBMITTAL SUBMISSION	J.A.R.	J.A.R.
3	4-10-2023	RIDEM - PRELIMINARY SUBMISSION	J.A.R.	J.A.R.
4	4-10-2023	RIDEM - PRELIMINARY SUBMISSION	J.A.R.	J.A.R.
5	4-10-2023	RIDEM - PRELIMINARY SUBMISSION	J.A.R.	J.A.R.
6	4-10-2023	RIDEM - PRELIMINARY SUBMISSION	J.A.R.	J.A.R.
7	4-10-2023	RIDEM - PRELIMINARY SUBMISSION	J.A.R.	J.A.R.

GRADING & DRAINAGE PLAN - I
 CENTRAL AVENUE SOLAR
 ASSESSOR'S PLAT 43 LOTS 70 AND 95
 JOHNSTON, RHODE ISLAND

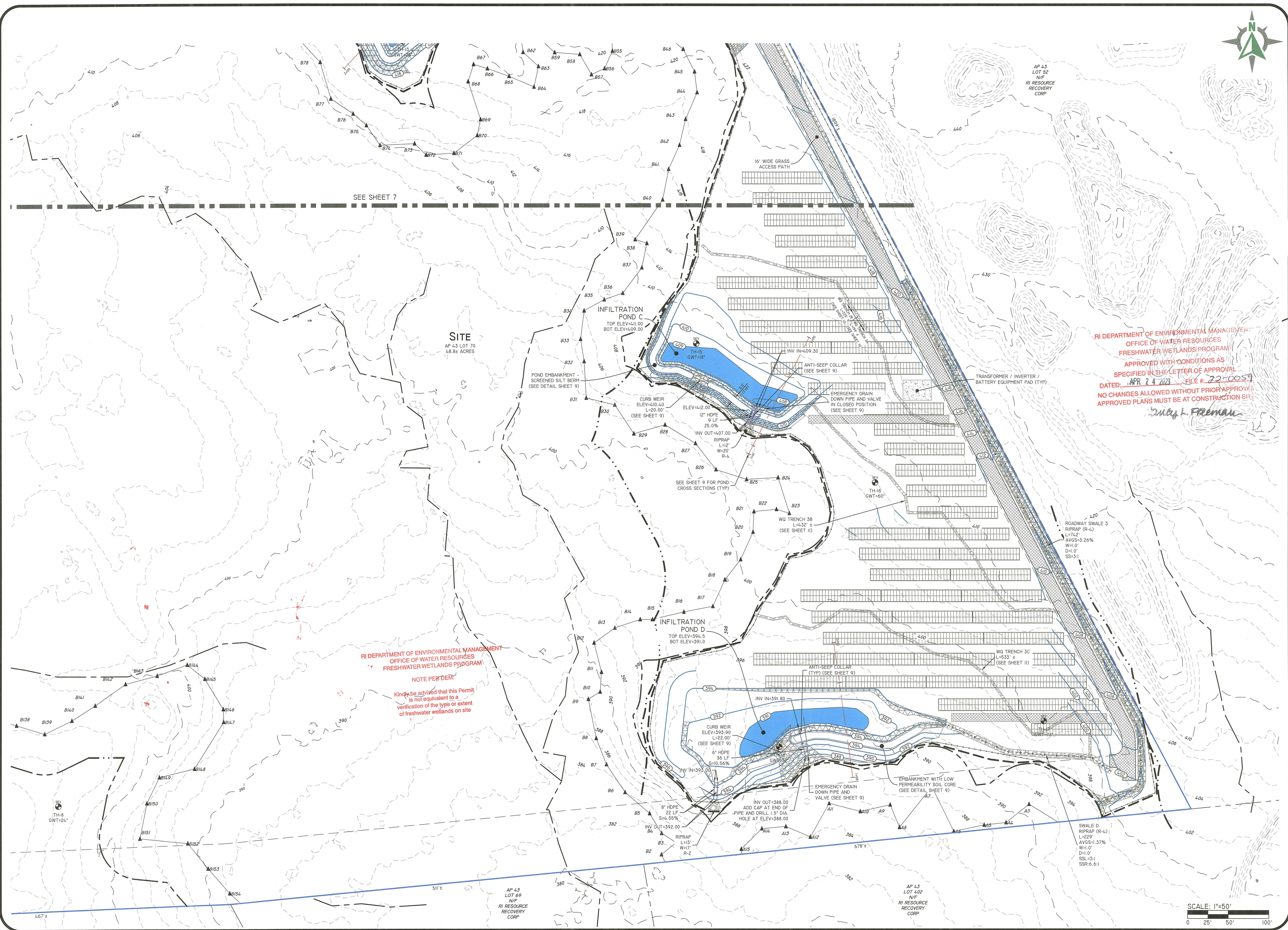
PREPARED FOR:
 REVITY ENERGY, LLC
 117 RETIRO CENTER BLVD., WARWICK, RHODE ISLAND 02886

DESIGN BY: J.A.R.

SEE SHEET 8



Z:\DEMMAINPROJECTS\23-029-CENTRAL AVENUE SOLAR\AUTOCAD DRAWINGS\23-029-PLAN-DWG-PL0101B.dwg 3/19/2023



SEE SHEET 7

SITE
AP 43 LOT 70
48.8± ACRES

AP 43
LOT 92
N/F
RI RESOURCE
RECOVERY
CORP

RI DEPARTMENT OF ENVIRONMENTAL MANAGEMENT
OFFICE OF WATER RESOURCES
FRESHWATER WETLANDS PROGRAM
APPROVED WITH CONDITIONS AS
SPECIFIED IN THE LETTER OF APPROVAL
DATED: APR 24 2023 FILE # 22-0059
NO CHANGES ALLOWED WITHOUT PRIOR APPROVAL
APPROVED PLANS MUST BE AT CONSTRUCTION SITE
Douglas Freeman

RI DEPARTMENT OF ENVIRONMENTAL MANAGEMENT
OFFICE OF WATER RESOURCES
FRESHWATER WETLANDS PROGRAM
NOTE PER DEM:
Kindly be advised that this Permit
is not equivalent to a
verification of the type or extent
of freshwater wetlands on site

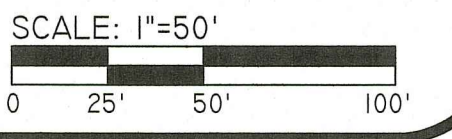
Diprete Engineering
Two Stafford Court Cranston, RI 02920
tel: 401-943-1000 fax: 401-664-6006 www.diprete-eng.com
Boston • Providence • Newport

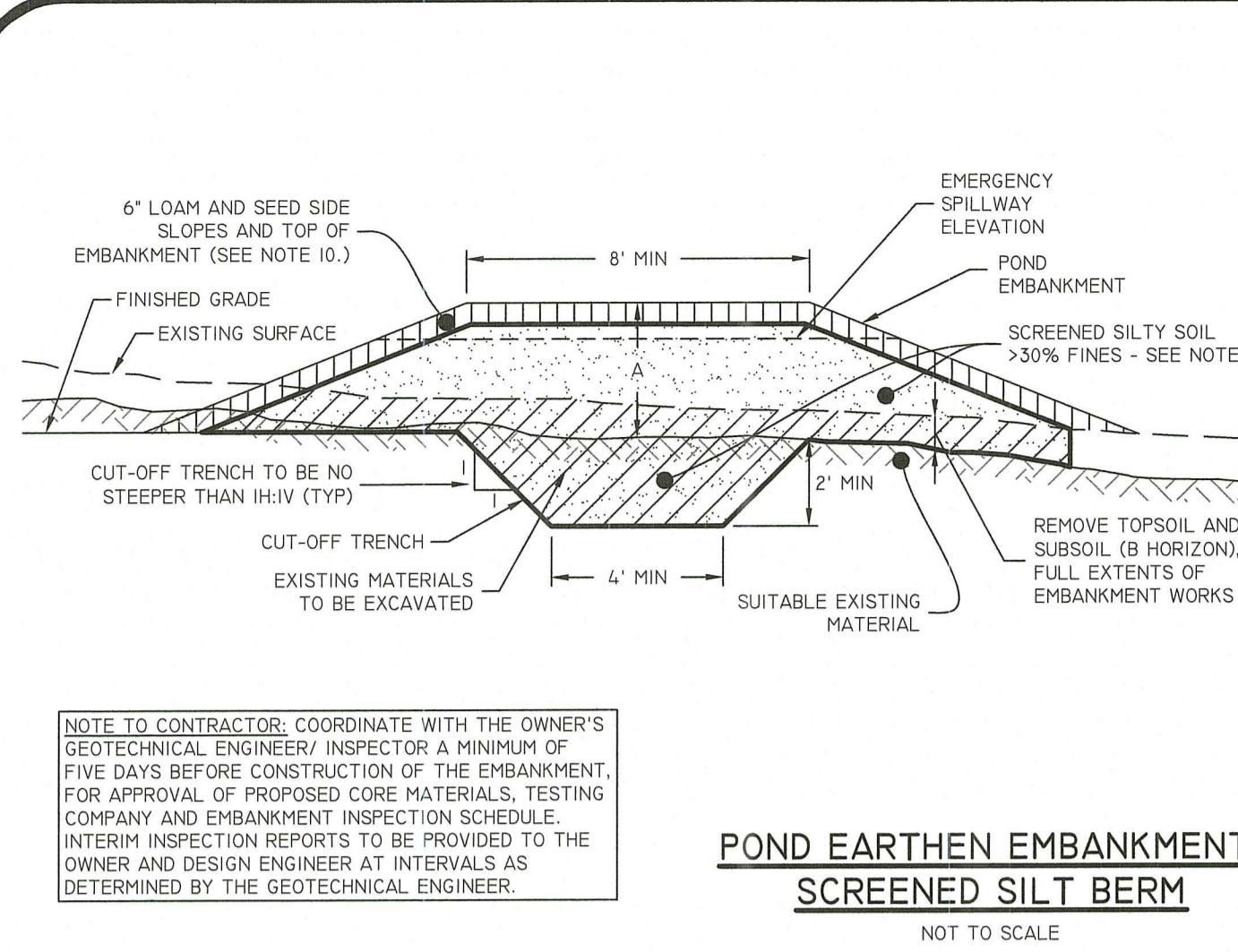
DAVID A. RUSSO
No. 14355
REGISTERED PROFESSIONAL ENGINEER
CIVIL

THIS PLAN SET MUST NOT BE USED FOR CONSTRUCTION PURPOSES UNLESS IT IS ACCOMPANIED BY A REGISTERED PROFESSIONAL ENGINEER OF DIPRETE ENGINEERING, INC. WARRANTS PLANS AND A PROFESSIONAL ENGINEER OF DIPRETE ENGINEERING, INC. THE CONTRACTOR IS RESPONSIBLE FOR ALL OF THE FIELD METHODS, SAFETY, PRECAUTIONS AND REQUIREMENTS, AND OSHA DESIGN. EXISTING UTILITIES SHOWN ON THIS PLAN ARE APPROXIMATE DATA. DIPRETE ENGINEERING, INC. ASSUMES NO LIABILITY FOR DATA OR UTILITIES INFORMATION OBTAINED FROM ANY SOURCE. SEE UTILITY NOTE ON SHEET 9.

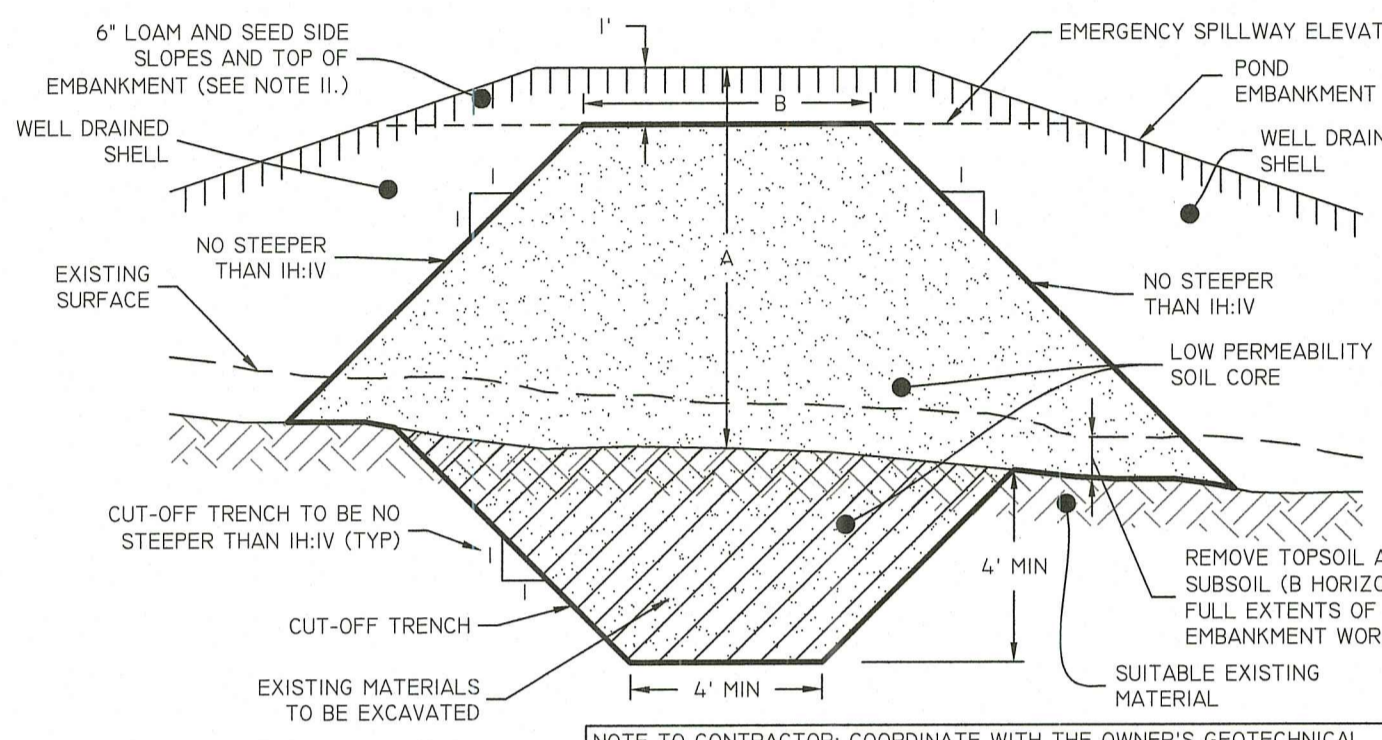
DATE	DESCRIPTION	BY	CHK
3-29-2023	PREP - RESPONSE TO COMMENTS	J.W.S.	
3-29-2023	RIEHS - OMTS SITE SUSTAINABILITY SUBMISSION	S.P.B.	
3-29-2023	RIEHS - PRELIMINARY SUBMISSION REVISED	S.D.M.	
3-29-2023	RIEHS - PRELIMINARY SUBMISSION REVISED	S.D.M.	
3-29-2023	RIEHS - PRELIMINARY SUBMISSION REVISED	S.D.M.	
3-29-2023	RIEHS - PRELIMINARY SUBMISSION REVISED	S.D.M.	
3-29-2023	RIEHS - PRELIMINARY SUBMISSION REVISED	S.D.M.	
3-29-2023	RIEHS - PRELIMINARY SUBMISSION REVISED	S.D.M.	
3-29-2023	RIEHS - PRELIMINARY SUBMISSION REVISED	S.D.M.	
3-29-2023	RIEHS - PRELIMINARY SUBMISSION REVISED	S.D.M.	

GRADING & DRAINAGE PLAN - 2
CENTRAL AVENUE SOLAR
ASSESSOR'S PLAT 43 LOTS 70 AND 95
JOHNSTON, RHODE ISLAND
PREPARED FOR:
REVITY ENERGY, LLC
117 METRO CENTER BLD., WARWICK, RHODE ISLAND 02886
DESIGN BY: D.A.R.
DRAWN BY: J.A.R.





POND EARTHEN EMBANKMENT: SCREENED SILT BERM
NOT TO SCALE



POND EARTHEN EMBANKMENT: LOW PERMEABILITY CORE
NOT TO SCALE

WELL DRAINED SHELL TO BE GRAVEL BORROW AND MEET THE FOLLOWING GRADATION:	PERCENT FINER BY WEIGHT
3-INCH	60-100
1/2 INCH	50-85
1/4 INCH	45-80
NO. 4	40-75
NO. 40	0-5
NO. 200	0-10

POND EMBANKMENT HEIGHT 'A' (F.T)

POND EMBANKMENT HEIGHT 'A' (F.T)	CORE MATERIAL
0-3.0	SCREENED SILT BERM *
OVER 3.0	SEE LOW PERMEABILITY CORE DETAIL.

*ONLY PERMITTED WHERE SPECIFICALLY NOTED ON THE PLANS

NOTES:

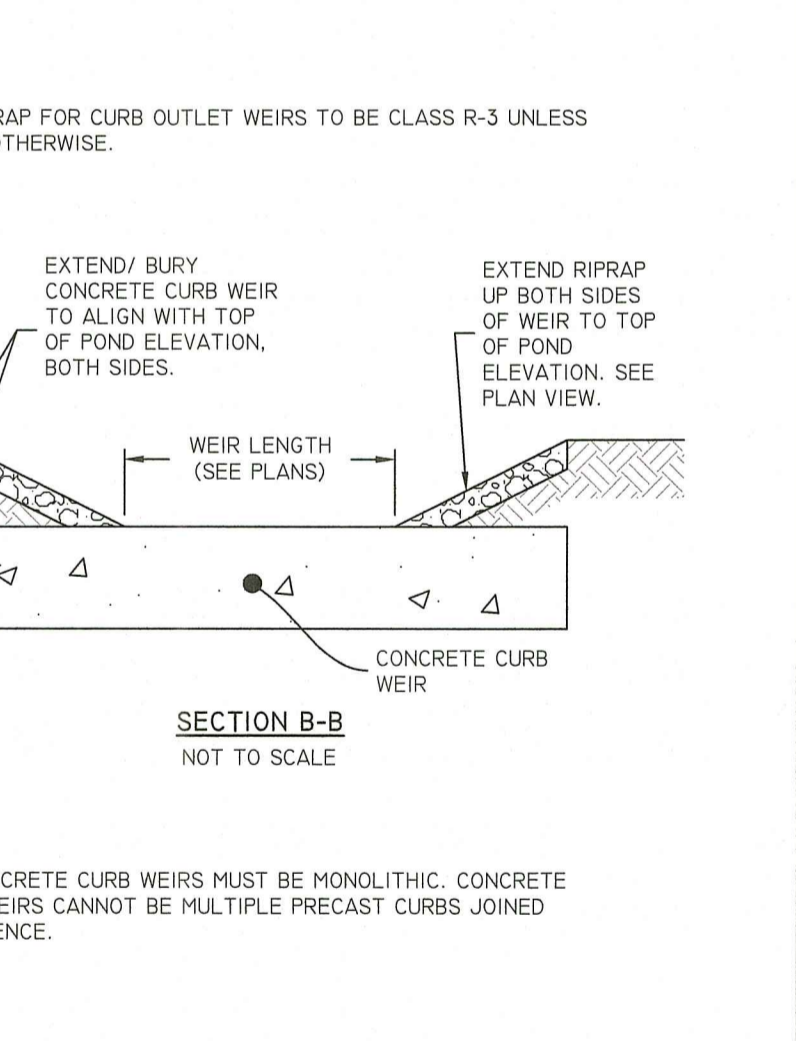
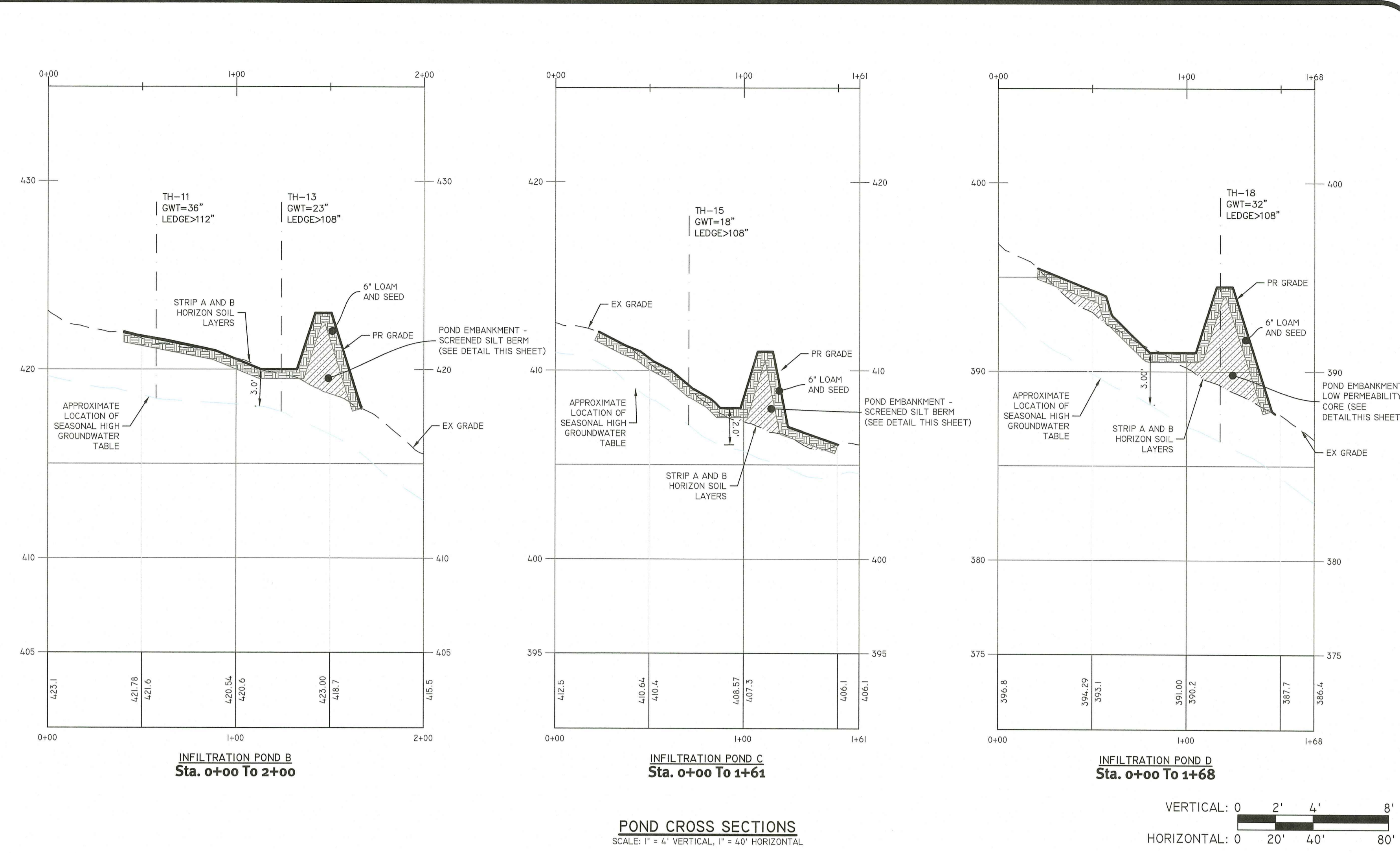
- SCREENED SILT BERM MAY BE USED FOR POND EMBANKMENTS WHERE DIMENSION 'A' IS 3' OR LESS, BUT ONLY WHERE SPECIFICALLY NOTED ON THE PLANS.
- SCREENED SILT BERM TO BE CONSTRUCTED OF A MATERIAL WITH A MINIMUM OF 30% PASSING THE #200 SIEVE AND A MAXIMUM PERMEABILITY OF 0.0005 CM/S.
- ALL MATERIAL MUST BE FREE FROM DELETERIOUS ORGANIC MATTER, INCLUDING (BUT NOT LIMITED TO) ROOTS, SOD, RUBBLE, SNOW, ICE, RUBBISH ETC.
- MINIMUM DEPTH OF CUT-OFF TRENCH SHALL BE 2' MEASURED FROM THE LOWEST ELEVATION OF THE UNDISTURBED EXISTING SURFACE INTERFACE. SEE DETAIL.
- THE MINIMUM BOTTOM WIDTH OF THE CUT-OFF TRENCH SHALL BE 4', AND WIDE ENOUGH TO PERMIT OPERATION OF COMPACTION EQUIPMENT.
- SIDE SLOPES OF THE CUT-OFF TRENCH SHALL BE NO STEEPER THAN IH:IV.
- SCREENED SILT BERM AT A MINIMUM SHALL EXTEND UP BOTH ABUTMENTS TO THE EMERGENCY SPILLWAY ELEVATION.
- IF BEDROCK IS ENCOUNTERED BELOW THE POND EMBANKMENT THE CUT-OFF TRENCH MAY BE MODIFIED AT THE DIRECTION OF A SUITABLY QUALIFIED GEOTECHNICAL ENGINEER.
- COMPACTION REQUIREMENTS FOR THE SCREENED SILT BERM TO BE 95% OF THE MODIFIED PROCTOR PER ASTM D1557. ALL MATERIALS ARE TO BE PLACED IN LIFTS NOT EXCEEDING 12".
- SIDE SLOPES OF POND EMBANKMENT TO BE NO STEEPER THAN THE SLOPES SHOWN ON THE POND-SPECIFIC DESIGN PLANS WITHOUT WRITTEN DIRECTION FROM THE DESIGN ENGINEER. IF ANY POND SIDE SLOPE IS STEEPER THAN 3H:IV, SLOPE PROTECTION MUST BE UTILIZED ON POND EMBANKMENT, WHICH MAY INCLUDE (BUT NOT BE LIMITED TO) RIPRAP AND/OR EROSION CONTROL MATS.
- THE SCREENED SILT BERM MUST BE KEPT FREE FROM STANDING WATER DURING THE BACKFILL OPERATION.
- ALL EMBANKMENT INSTALLATIONS TO BE SUPERVISED BY A SUITABLY QUALIFIED GEOTECHNICAL ENGINEER. SEE 'NOTE TO CONTRACTOR'.
- ANY PROPOSED DEVIATIONS FROM THIS DETAIL MUST BE DESIGNED BY A SUITABLY QUALIFIED PROFESSIONAL GEOTECHNICAL ENGINEER AND SUBMITTED TO THE SITE ENGINEER (AND AHJ WHERE REQUIRED) FOR REVIEW PRIOR TO CONSTRUCTION.

POND EMBANKMENT HEIGHT 'A' (F.T)

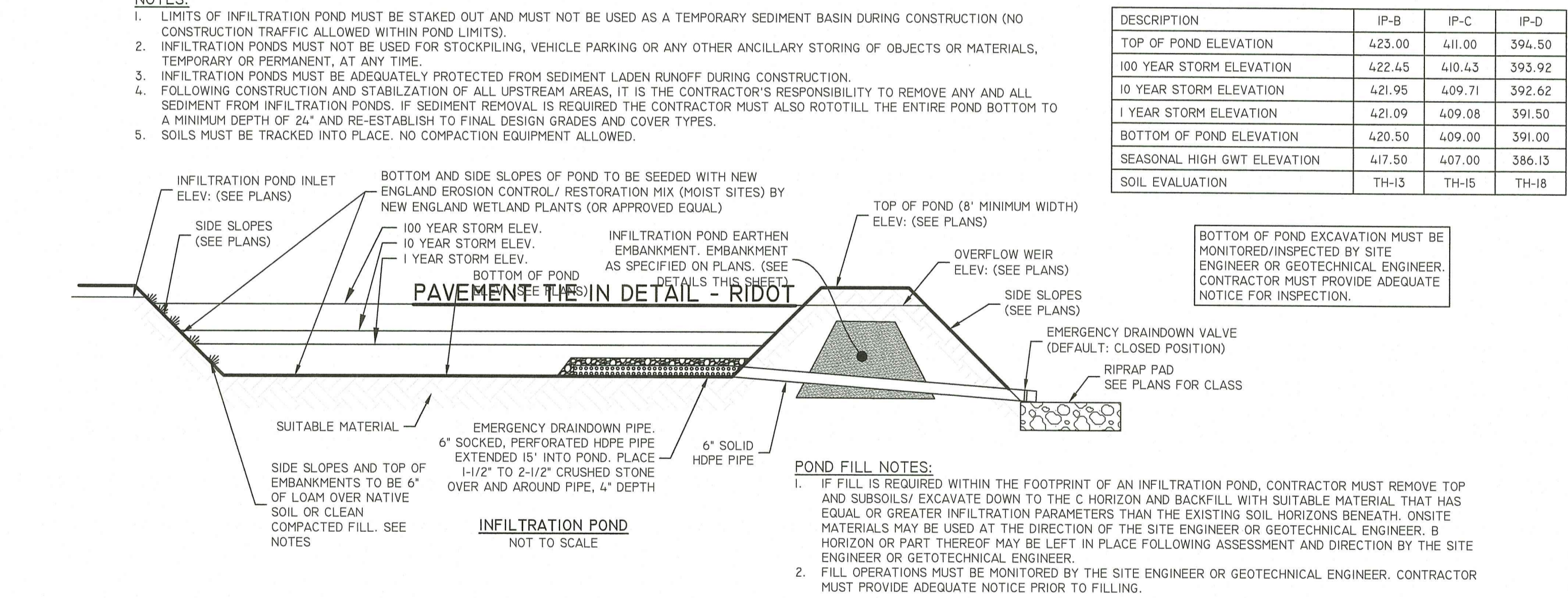
POND EMBANKMENT HEIGHT 'A' (F.T)	TOP WIDTH OF CORE (F.T)
0-7.0	6.0
OVER 7.0	PER GEOTECH

NOTES:

- LOW PERMEABILITY SOIL CORE TO BE PROVIDED FOR ALL POND EMBANKMENTS UNLESS AN ALTERNATIVE METHOD IS SPECIFICALLY NOTED ON THE PLANS.
- LOW PERMEABILITY SOIL CORE TO BE CONSTRUCTED OF A MATERIAL WITH A MINIMUM OF 30% PASSING THE #200 SIEVE AND A MAXIMUM PERMEABILITY OF 0.0005 CM/S.
- WELL DRAINED SHELL TO BE GRAVEL BORROW WITH LESS THAN 10% PASSING THE #200 SIEVE AND MEET THE GRADATION AS SHOWN ON THIS DETAIL.
- ALL MATERIAL MUST BE FREE FROM DELETERIOUS ORGANIC MATTER, INCLUDING (BUT NOT LIMITED TO) ROOTS, SOD, RUBBLE, SNOW, ICE, RUBBISH ETC.
- MINIMUM DEPTH OF CUT-OFF TRENCH SHALL BE 4' MEASURED FROM THE LOWEST ELEVATION OF THE UNDISTURBED EXISTING SURFACE INTERFACE. SEE DETAIL.
- THE MINIMUM BOTTOM WIDTH OF THE CUT-OFF TRENCH SHALL BE 4', AND WIDE ENOUGH TO PERMIT OPERATION OF COMPACTION EQUIPMENT.
- SIDE SLOPES OF THE CUT-OFF TRENCH SHALL BE NO STEEPER THAN IH:IV.
- IF BEDROCK IS ENCOUNTERED BELOW THE POND EMBANKMENT THE CUT OFF TRENCH MAY BE MODIFIED AT THE DIRECTION OF A SUITABLY QUALIFIED GEOTECHNICAL ENGINEER.
- THE LOW PERMEABILITY CORE AT A MINIMUM SHALL EXTEND UP BOTH ABUTMENTS TO THE EMERGENCY SPILLWAY ELEVATION.
- COMPACTION REQUIREMENTS FOR THE SHELL AND LOW PERMEABILITY CORE TO BE 95% OF THE MODIFIED PROCTOR PER ASTM D1557. ALL FILL TO BE PLACED IN LIFTS NOT EXCEEDING 12".
- SIDE SLOPE OF POND EMBANKMENT TO BE NO STEEPER THAN THE SLOPES SHOWN ON THE POND-SPECIFIC DESIGN PLANS WITHOUT WRITTEN DIRECTION FROM THE DESIGN ENGINEER. IF ANY POND SIDE SLOPE IS STEEPER THAN 3H:IV, SLOPE PROTECTION MUST BE UTILIZED ON POND EMBANKMENT, WHICH MAY INCLUDE (BUT NOT BE LIMITED TO) RIPRAP AND/OR EROSION CONTROL MATS.
- THE LOW PERMEABILITY CORE MUST BE KEPT FREE FROM STANDING WATER DURING THE BACKFILL OPERATION.
- ALL EMBANKMENT INSTALLATIONS TO BE SUPERVISED BY A SUITABLY QUALIFIED GEOTECHNICAL ENGINEER. SEE 'NOTE TO CONTRACTOR'.
- ANY PROPOSED DEVIATIONS FROM THIS DETAIL MUST BE DESIGNED BY A SUITABLY QUALIFIED PROFESSIONAL GEOTECHNICAL ENGINEER AND SUBMITTED TO THE SITE ENGINEER (AND AHJ WHERE REQUIRED) FOR REVIEW PRIOR TO CONSTRUCTION.



CURB OUTLET WEIR
NOT TO SCALE



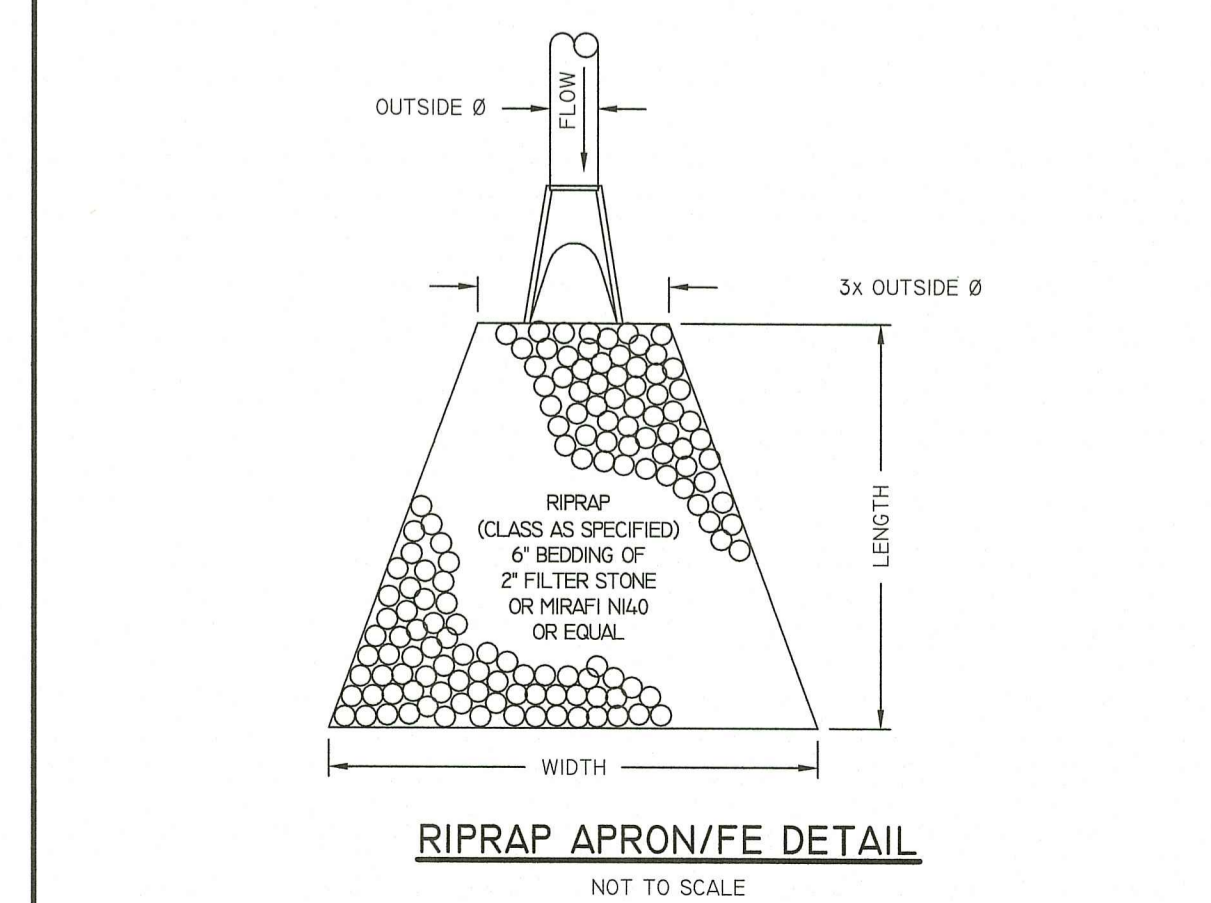
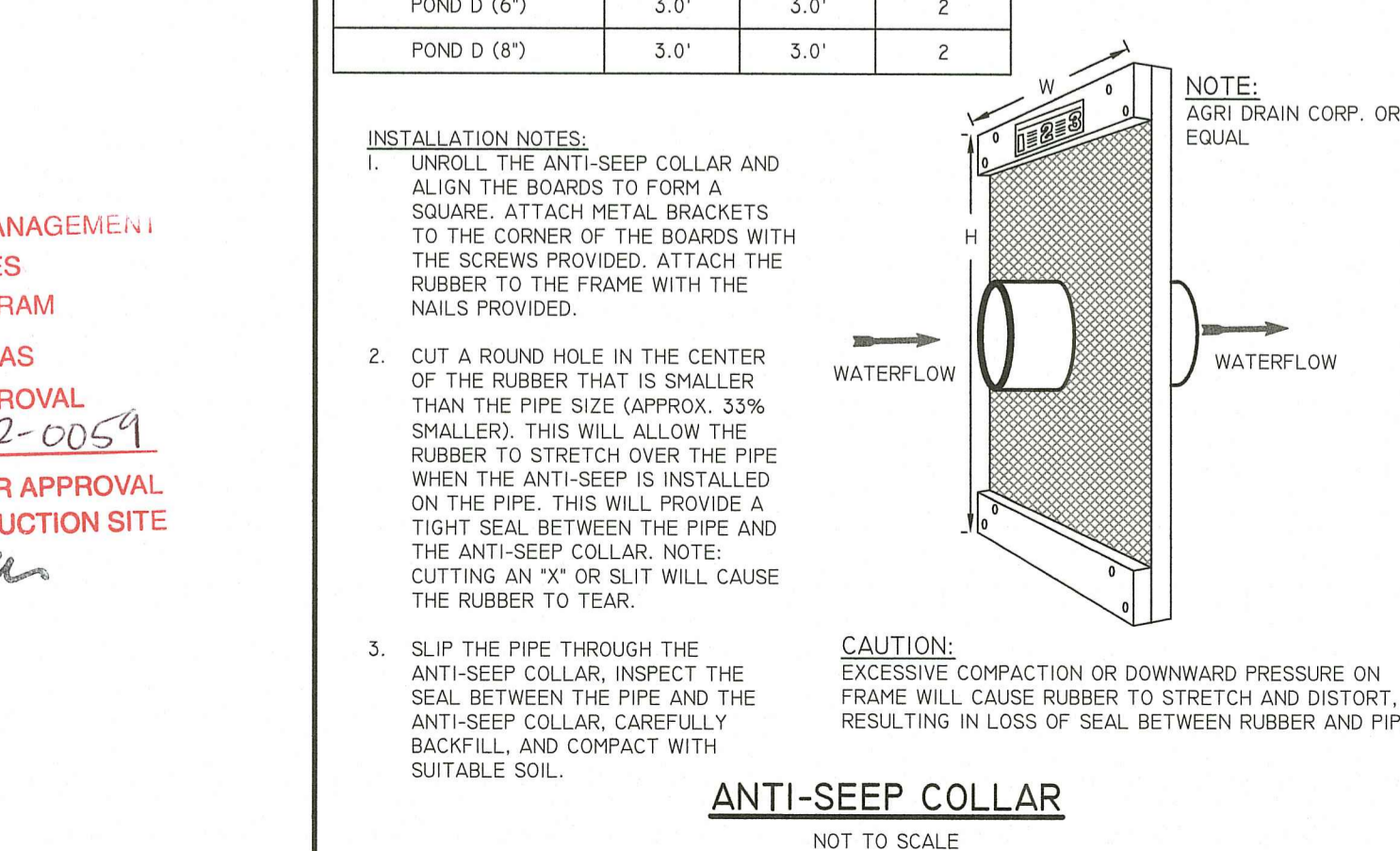
INFILTRATION POND
NOT TO SCALE

RI DEPARTMENT OF ENVIRONMENTAL MANAGEMENT
OFFICE OF WATER RESOURCES
FRESHWATER WETLANDS PROGRAM

APPROVED WITH CONDITIONS AS SPECIFIED IN THE LETTER OF APPROVAL DATED APR 24 2023 FILE # 22-0059

NO CHANGES ALLOWED WITHOUT PRIOR APPROVAL APPROVED PLANS MUST BE AT CONSTRUCTION SITE

Walter J. Freeman



DiPrete Engineering
Two Stafford Court Cranston, RI 02920
tel 401-949-1000 fax 401-464-6006 www.diprete-eng.com

Boston • Providence • Newport

DAVID A. RUSSO
No. 1335
REGISTERED PROFESSIONAL ENGINEER CIVIL

THIS PLAN SET MUST NOT BE USED FOR CONSTRUCTION PURPOSES UNLESS IT IS ACCOMPANIED BY A REGISTERED PROFESSIONAL ENGINEER OF DIPRETE ENGINEERING.

DIPRETE ENGINEERING DOES NOT WARRANT THE PLANS OR THE INFORMATION THEREON. THE CONTRACTOR IS RESPONSIBLE FOR ALL OF THE MEASUREMENTS, METHODS, SAFETY REGULATIONS AND REQUIREMENTS, AND OSHA DESIGN UTILITIES SHOWN ON THIS PLAN ARE APPROXIMATE. DAMAGE TO EXISTING UTILITIES OR STRUCTURES IS NOT THE RESPONSIBILITY OF DIPRETE ENGINEERING. SEE UTILITY NOTE ON SHEET 3.

DESCRIPTION	IP-B	IP-C	IP-D
TOP OF POND ELEVATION	423.00	411.00	394.50
100 YEAR STORM ELEVATION	422.45	410.43	393.92
10 YEAR STORM ELEVATION	421.95	409.71	392.62
1 YEAR STORM ELEVATION	421.09	409.08	391.50
BOTTOM OF POND ELEVATION	420.50	409.00	391.00
SEASONAL HIGH GWT ELEVATION	417.50	407.00	386.13
SOIL EVALUATION	TH-13	TH-15	TH-18

DESIGN BY: J.A.R.

POND DETAILS

CENTRAL AVENUE SOLAR
ASSESSOR'S PLAT 4.3 LOTS 70 AND 95
JOHNSTON, RHODE ISLAND

REVIEWED FOR:
REVITY ENERGY, LLC
117 THE TRO CENTER BLVD. WARWICK, RHODE ISLAND 02886

PREPARED FOR:
REVITY ENERGY, LLC

DATE: 04/24/2023

PROJECT NO.: 24-07-009

DESIGN BY: J.A.R.

REVISIONS:

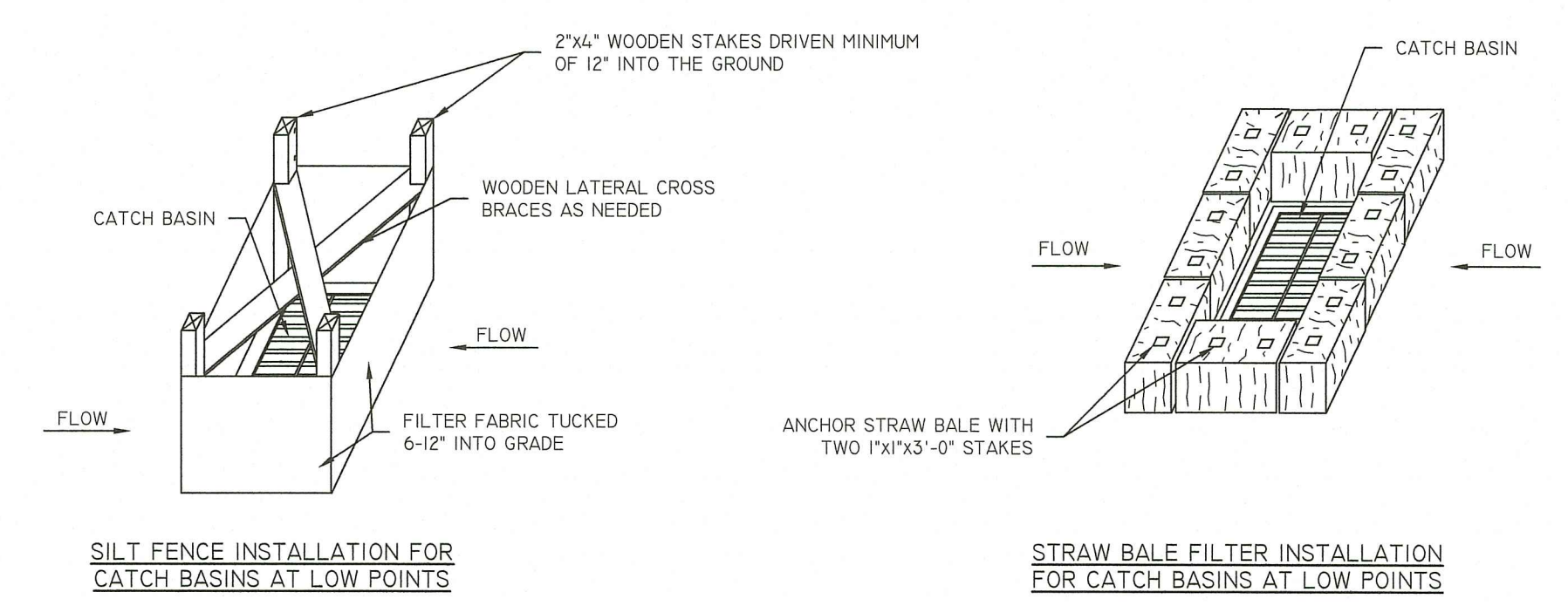
NO.	DATE	DESCRIPTION	BY
1	04/24/2023	ISSUE FOR PERMIT SUBMISSION	J.A.R.
2	04/24/2023	ISSUE FOR PERMIT SUBMISSION	J.A.R.
3	04/24/2023	ISSUE FOR PERMIT SUBMISSION	J.A.R.
4	04/24/2023	ISSUE FOR PERMIT SUBMISSION	J.A.R.
5	04/24/2023	ISSUE FOR PERMIT SUBMISSION	J.A.R.

SHEET 9 OF 12

THIS PLAN SET MUST NOT BE USED FOR CONSTRUCTION PURPOSES UNLESS IT IS ISSUED FOR CONSTRUCTION AND STAMPED BY THE REGISTERED PROFESSIONAL ENGINEER OF RECORD.

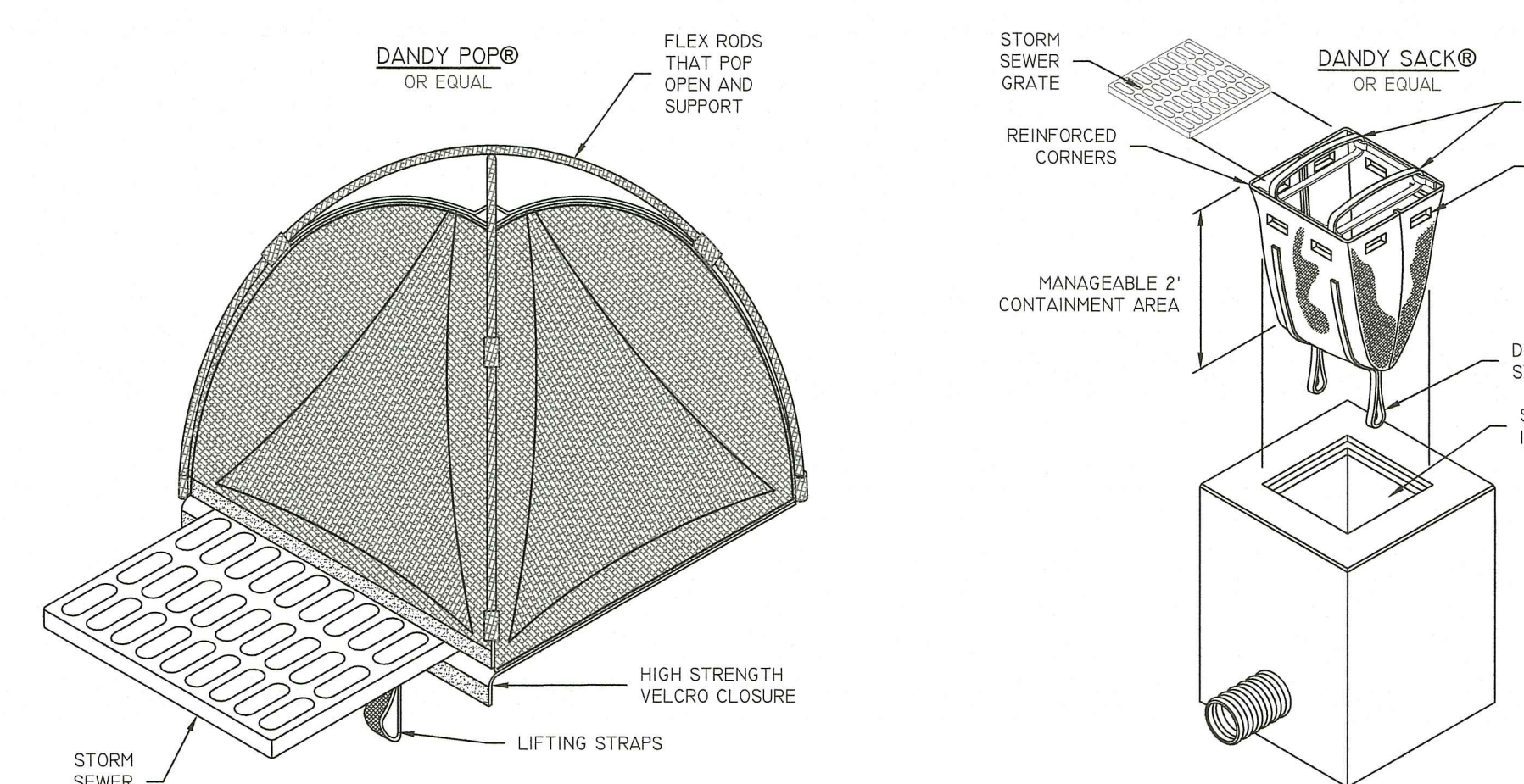
NO.	DATE	REVISION / COMMENTS	BY	CHKD.
1	3-29-2024	ISSUE FOR CONSTRUCTION	D.A.R.	D.A.R.
2	3-29-2024	REVISION: SITE SUBMITTAL	D.A.R.	D.A.R.
3	3-29-2024	REVISION: PRELIMINARY SUBMISSION	D.A.R.	D.A.R.
4	3-29-2024	REVISION: PRELIMINARY SUBMISSION	D.A.R.	D.A.R.
5	3-29-2024	REVISION: PRELIMINARY SUBMISSION	D.A.R.	D.A.R.
6	3-29-2024	REVISION: PRELIMINARY SUBMISSION	D.A.R.	D.A.R.
7	3-29-2024	REVISION: PRELIMINARY SUBMISSION	D.A.R.	D.A.R.
8	3-29-2024	REVISION: PRELIMINARY SUBMISSION	D.A.R.	D.A.R.
9	3-29-2024	REVISION: PRELIMINARY SUBMISSION	D.A.R.	D.A.R.
10	3-29-2024	REVISION: PRELIMINARY SUBMISSION	D.A.R.	D.A.R.

DESIGN BY: D.A.R.
 DRAWN BY: J.A.R.



- NOTES:**
1. STORMWATER INLETS WHICH DO NOT DISCHARGE TO SEDIMENT TRAPS OR BASINS MUST BE PROTECTED UNTIL THE TRIBUTARY AREAS ARE STABILIZED.
 2. SEDIMENT MUST BE REMOVED FROM INLET PROTECTION AFTER EACH STORM.
 3. REFER TO LONG TERM/SHORT TERM MAINTENANCE NOTES FOR TIMING OF PLACEMENT AND REMOVAL OF EROSION CONTROL ELEMENTS.

CATCH BASIN EROSION CONTROL
 NOT TO SCALE

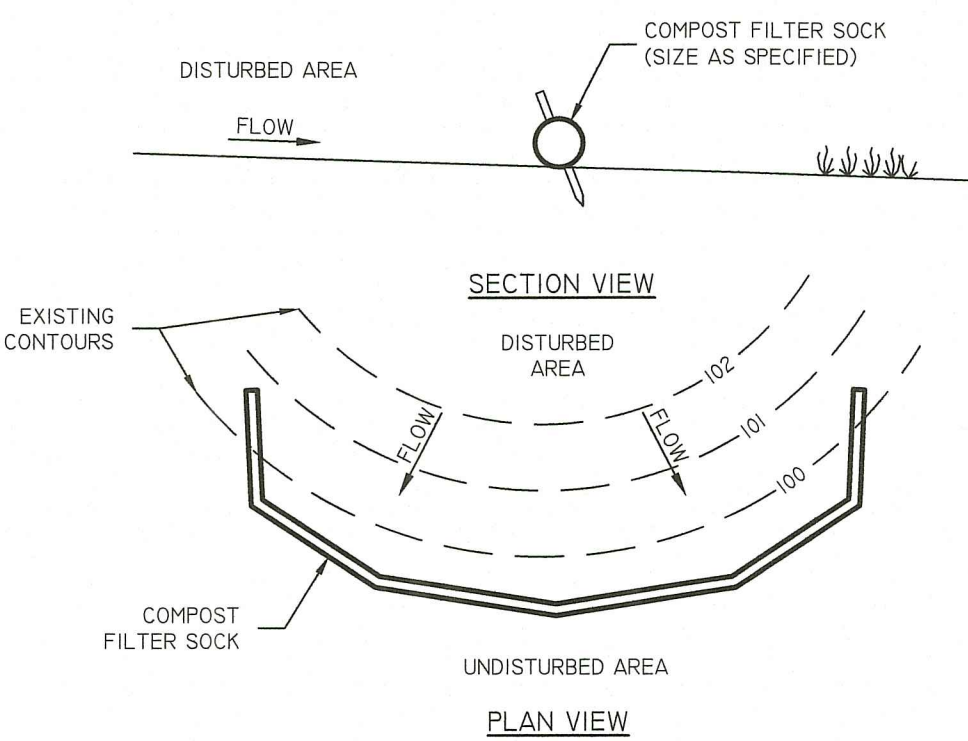


INLET SEDIMENT CONTROL DEVICES
 NOT TO SCALE

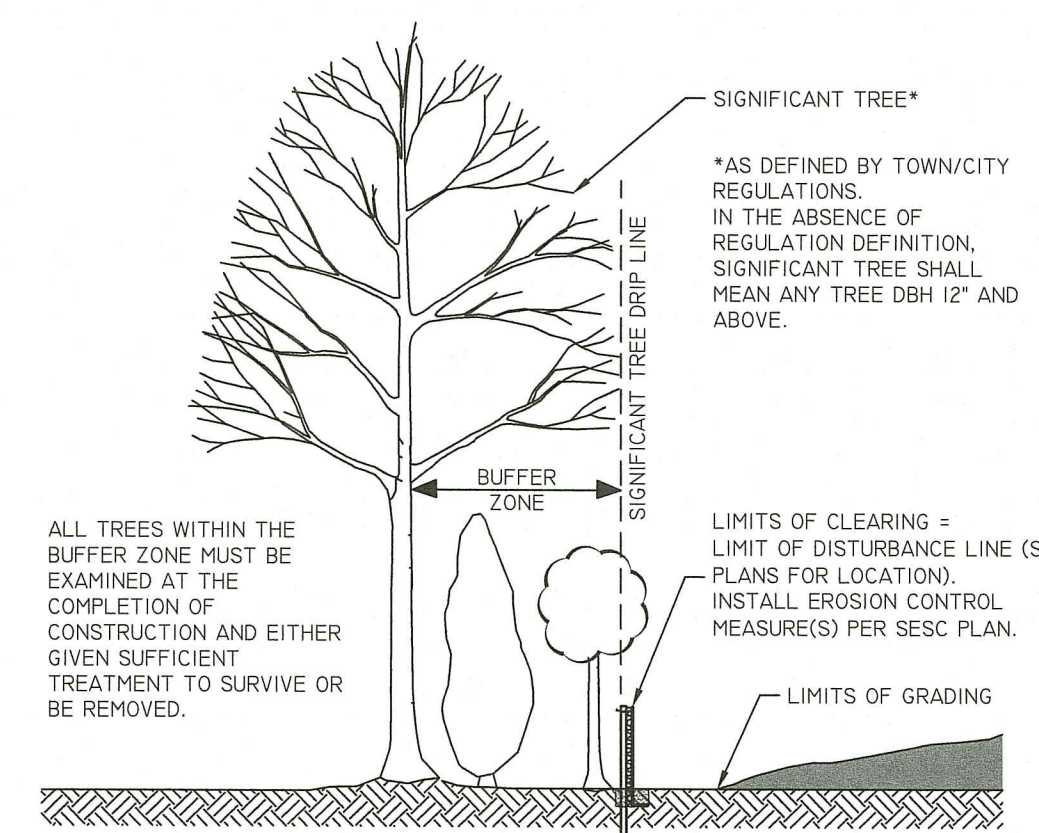
RI DEPARTMENT OF ENVIRONMENTAL MANAGEMENT
 OFFICE OF WATER RESOURCES
 FRESHWATER WETLANDS PROGRAM
 APPROVED WITH CONDITIONS AS
 SPECIFIED IN THE LETTER OF APPROVAL
 DATED: APR 24 2024 FILE #: 22-0059
 NO CHANGES ALLOWED WITHOUT PRIOR APPROVAL
 APPROVED PLANS MUST BE AT CONSTRUCTION SITE
Mindy L. Freeman

SECC NOTES:

1. IN HATCHED AREAS (SLOPE GREATER THAN 15%) PLACE COMPOST FILTER SOCK ACCORDING TO SPACING LISTED IN RISESCH- SECTION 6, FIGURE-2 TABLE BELOW.
2. AT THE TOE OF SLOPES GREATER THAN 5:1 WATTLES AND FIBER ROLLS ARE TO BE AT LEAST 20 INCHES IN DIAMETER OR STACKED SMALLER DIAMETER ROLLS AS AN EQUIVALENT.



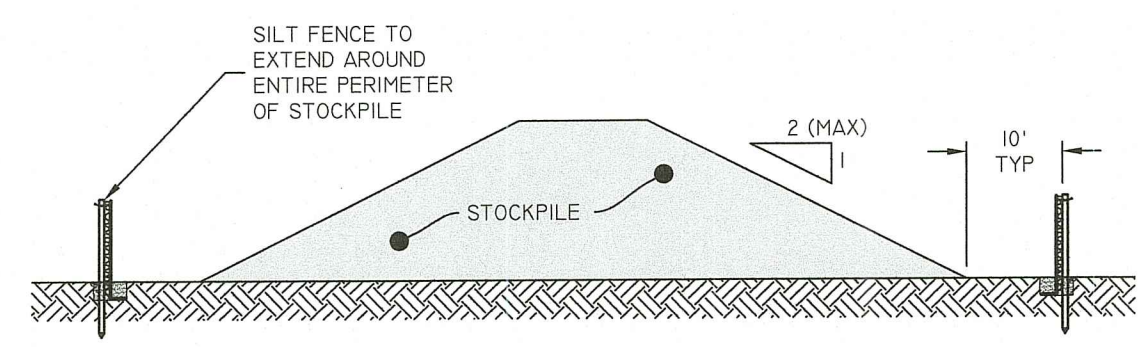
COMPOST FILTER SOCK
 NOT TO SCALE



LIMIT OF DISTURBANCE AT VEGETATION
 NOT TO SCALE

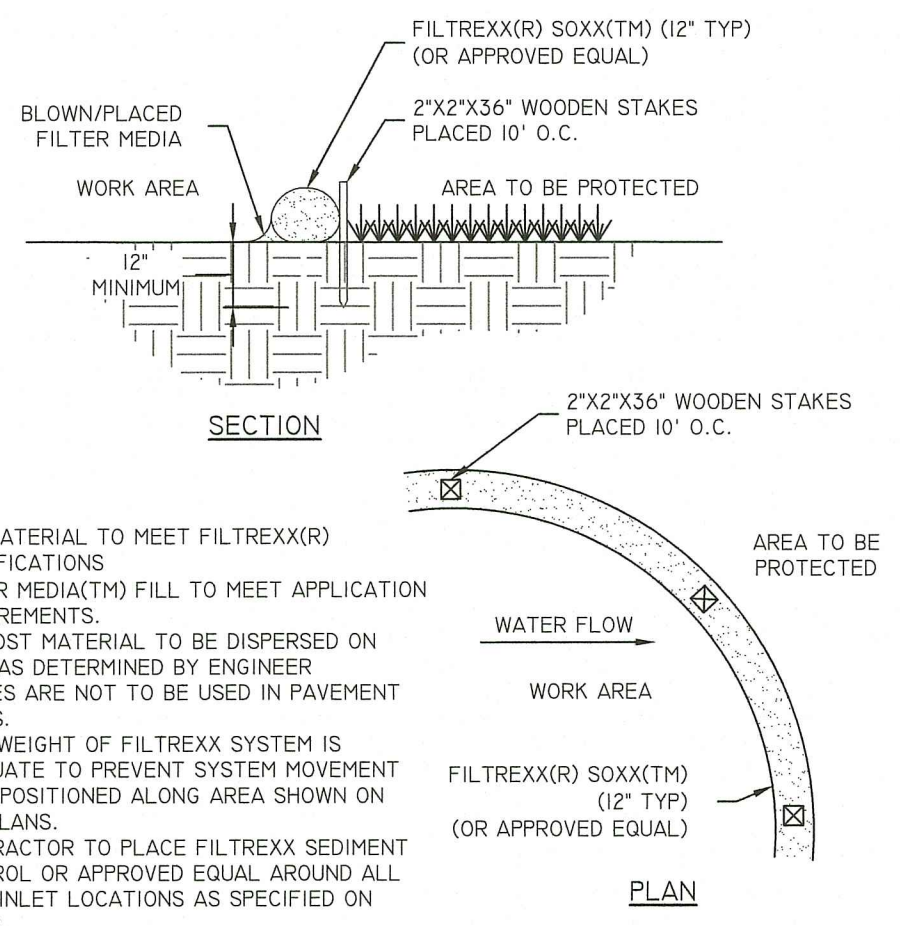
*AS DEFINED BY TOWN/CITY REGULATIONS. IN THE ABSENCE OF REGULATION DEFINITION, SIGNIFICANT TREE SHALL MEAN ANY TREE DBH 12" AND ABOVE.

NOTE: LIMIT OF DISTURBANCE (LOD) MUST BE STAKED OUT PRIOR TO CONSTRUCTION. IF ANY SIGNIFICANT TREE DRIP LINE IS ENCRANCHING PAST THE LOD, CONTRACTOR MUST CONTACT SITE ENGINEER PRIOR TO CONSTRUCTION.



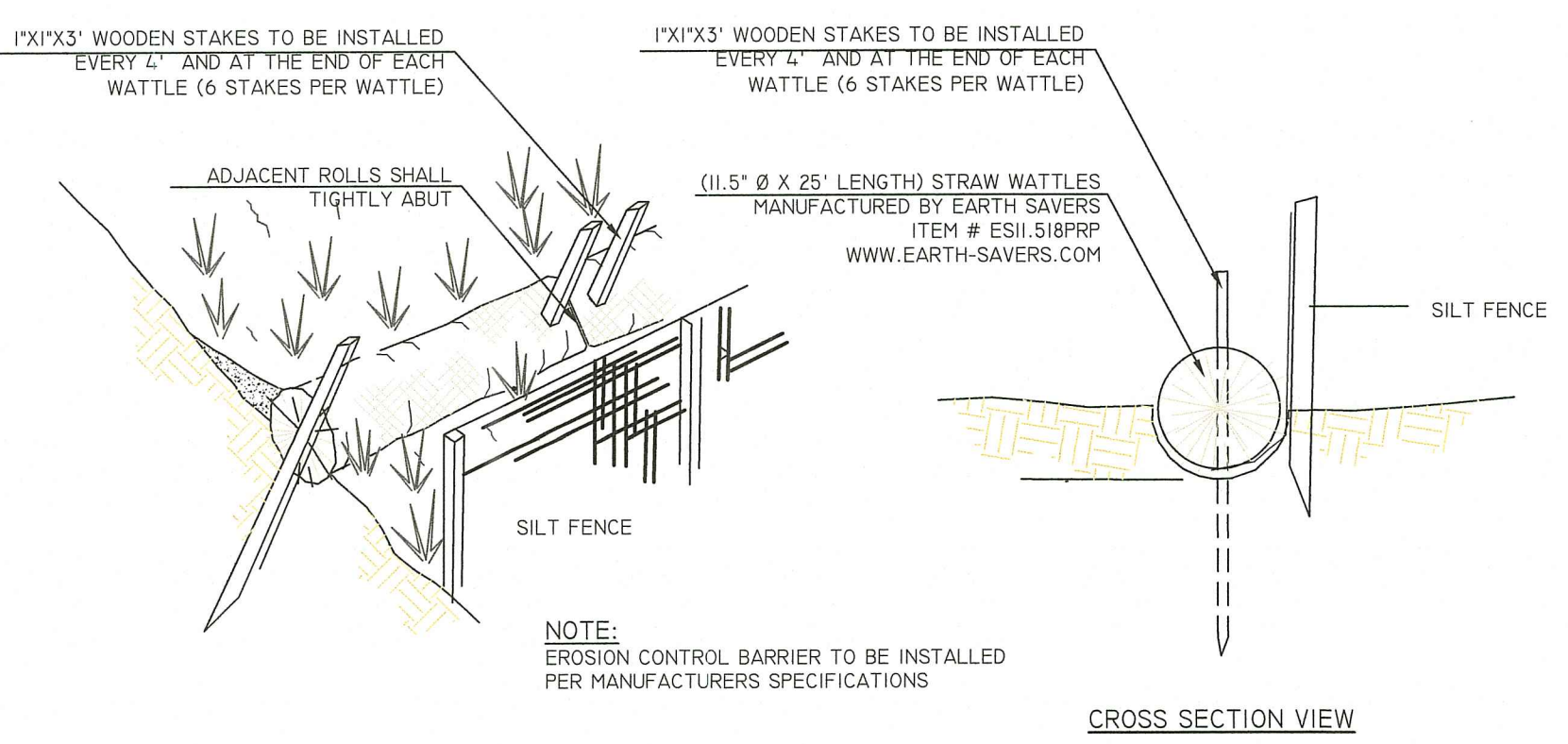
- NOTES:**
1. ALL STOCKPILES MUST BE INSTALLED AND MAINTAINED IN ACCORDANCE WITH SECTION 3 "STOCKPILE AND STAGING AREA MANAGEMENT" OF THE RHODE ISLAND SOIL EROSION AND SEDIMENT CONTROL HANDBOOK (CURRENT EDITION).
 2. DIVERT ALL STORMWATER AWAY FROM STOCKPILES.
 3. SOIL STOCKPILES THAT ARE NOT TO BE USED WITHIN 30 DAYS MUST BE SEEDED AND MULCHED IMMEDIATELY AFTER FORMATION OF THE STOCKPILE WITH SEED MIX COMPATIBLE WITH THE SOIL TYPE.
 4. STOCKPILE AND SILT FENCE MUST BE INSPECTED AT LEAST ONCE PER WEEK AND AFTER RAIN EVENTS IN EXCESS OF 1/2" OF RAINFALL. REPAIR/ REPLACE SILT FENCE (AND STOCKPILE COVERS WHERE APPLICABLE) AS NEEDED TO KEEP THEM FUNCTIONING ADEQUATELY.
 5. SEDIMENT TRAPPED BY SILT FENCES MUST BE REMOVED AND PROPERLY DISPOSED OF WHENEVER SIGNIFICANT ACCUMULATION OCCURS.

STOCKPILE PROTECTION
 NOT TO SCALE

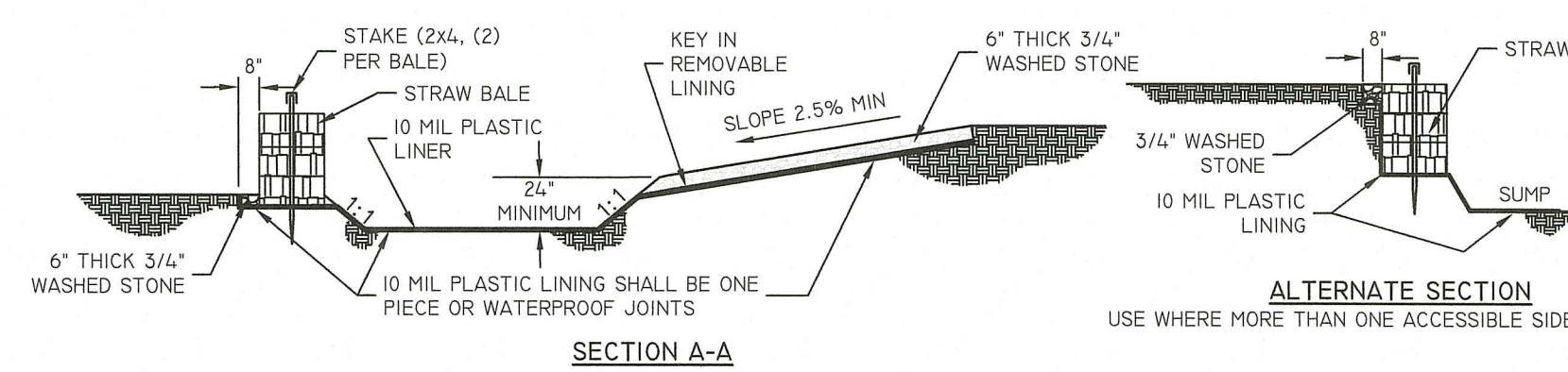
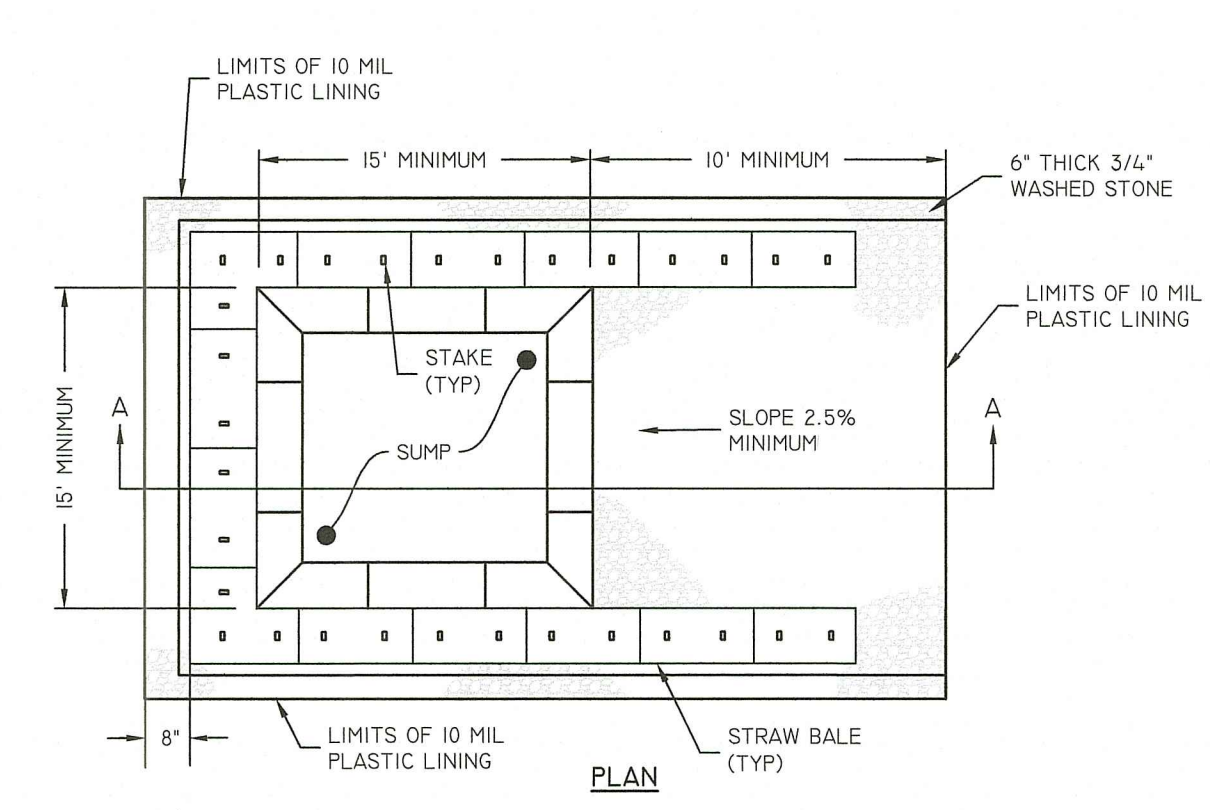


- NOTES:**
1. ALL MATERIAL TO MEET FILTREXX(R) SPECIFICATIONS
 2. FILTER MEDIA(TM) FILL TO MEET APPLICATION REQUIREMENTS
 3. COMPOST MATERIAL TO BE DISPERSED ON SITE, AS DETERMINED BY ENGINEER
 4. STAKES ARE NOT TO BE USED IN PAVEMENT AREAS.
 5. SELF WEIGHT OF FILTREXX SYSTEM IS ADEQUATE TO PREVENT SYSTEM MOVEMENT ONCE POSITIONED ALONG AREA SHOWN ON THE PLANS.
 6. CONTRACTOR TO PLACE FILTREXX SEDIMENT CONTROL OR APPROVED EQUAL AROUND ALL CURB INLET LOCATIONS AS SPECIFIED ON PLANS.

FILTREXX SEDIMENT CONTROL (OR APPROVED EQUAL)
 NOT TO SCALE



SILT FENCE/STRAW WATTLE SEDIMENT BARRIER
 NOT TO SCALE



- NOTES:**
1. PIT IS SPECIFICALLY DESIGNATED, DIKED AND IMPERVIOUS CONTAINMENT TO PREVENT CONTACT BETWEEN CONCRETE WASH AND STORMWATER.
 2. WASH WATER SHALL NOT BE ALLOWED TO FLOW TO SURFACE WATER.
 3. FACILITY MUST HOLD SUFFICIENT VOLUME TO CONTAIN CONCRETE WASTE WITH A MINIMUM FREEBOARD OF 12".
 4. FACILITY SHALL NOT BE FILLED BEYOND 95% CAPACITY UNLESS A NEW FACILITY IS CONSTRUCTED.
 5. SAWCUT PORTLAND CEMENT CONCRETE, RESIDUE FROM SAWCUT AND GRINDING TO BE DISPOSED OF IN THE PIT.
 6. CONCRETE WASHOUTS SHALL BE LOCATED A MINIMUM OF 100' FROM DRAINAGE WAYS, INLETS, AND SURFACE WATERS.
 7. MANUFACTURED CONCRETE WASHOUT DEVICES MAY BE USED IF REMOVED FROM THE SITE WHEN 95% FULL CAPACITY.

CONCRETE WASHOUT AREA
 NOT TO SCALE

Z:\DEVELOPMENT\PROJECTS\24-229-CENTRAL AVENUE SOLAR\AUTOCAD DRAWINGS\24-229-PLAN\DWG_PLOTTER_3/19/2023



- LEGEND:**
- UTILITY POLE TO POTENTIALLY BE REPLACED (SEE NOTE 1 BELOW) ●
 - OVERHEAD LINE TO BE REPLACED ---
 - CENTERLINE OF STREAM ---
 - RIGIS WETLAND LINE ---
 - WETLAND LINE & FLAG ▲ ▲
 - ASSESSORS LINE ---
 - PROPOSED PROPERTY LINE ---

- NOTES:**
1. UTILITY POLE LOCATIONS ARE APPROXIMATE
 2. THE PURPOSE OF THIS PLAN IS TO CONCEPTUALLY SHOW THE PROPOSED OFFSITE UTILITY IMPROVEMENTS NEEDED WHICH WILL BE DESIGNED BY OTHERS

Diprete Engineering
 Two Stafford Court Cranston, RI 02920
 tel: 401-943-1000 fax: 401-664-6006 www.diprete-eng.com

Boston • Providence • Newport

DAVID A. RUSSO
 No. 14355
 REGISTERED PROFESSIONAL ENGINEER CIVIL

THIS PLAN SET MUST NOT BE USED FOR CONSTRUCTION PURPOSES UNLESS IT IS ACCOMPANIED BY THE PROFESSIONAL ENGINEER'S SEAL AND SIGNATURE.
 DIPRETE ENGINEERING ONLY WARRANTS PLANS ON A DIPRETE PROFESSIONAL ENGINEER OF DIPRETE ENGINEERING, INC. DESIGN. THE ASSUMPTIONS FOR THIS DESIGN ARE THAT ALL METHODS, SAFETY, PRECAUTIONS AND REQUIREMENTS, AND OSHA DESIGN, SHALL BE IN ACCORDANCE WITH THE PLAN AND DESIGN. EXISTING UTILITIES SHOWN ON THIS PLAN ARE APPROXIMATE ONLY. DIPRETE ENGINEERING ASSUMES NO RESPONSIBILITY FOR THE ACCURACY OF EXISTING UTILITIES. SEE UTILITY NOTE ON SHEET 5.

DATE	DESCRIPTION	BY	APP. BY
11-29-2023	DESIGN	J.A.R.	J.A.R.
12-15-2023	REVISION	J.A.R.	J.A.R.
01-10-2024	REVISION	J.A.R.	J.A.R.
02-23-2024	REVISION	J.A.R.	J.A.R.
03-21-2024	REVISION	J.A.R.	J.A.R.

RI DEPARTMENT OF ENVIRONMENTAL MANAGEMENT
 OFFICE OF WATER RESOURCES
 FRESHWATER WETLANDS PROGRAM
 APPROVED WITH CONDITIONS AS SPECIFIED IN THE LETTER OF APPROVAL
 DATED: APR 24 2023 FILE #: 22-0059
 NO CHANGES ALLOWED WITHOUT PRIOR APPROVAL
 APPROVED PLANS MUST BE AT CONSTRUCTION SITE

Nancy L. Freeman

SCALE: 1"=250'
 0 125' 250' 500'

INTERCONNECTION PLAN
CENTRAL AVENUE SOLAR
 ASSESSOR'S PLAT 43 LOTS 70 AND 95
 JOHNSTON, RHODE ISLAND

PREPARED FOR:
REVITY ENERGY, LLC
 117 METRO CENTER BLVD., WARWICK, RHODE ISLAND 02886

DESIGN BY: D.A.R.
 DRAWN BY: J.A.R.

NO. 02886 02-24-2023 COPYRIGHT 2023 BY DIPRETE ENGINEERING ASSOCIATES, INC.

SHEET 12 OF 12