

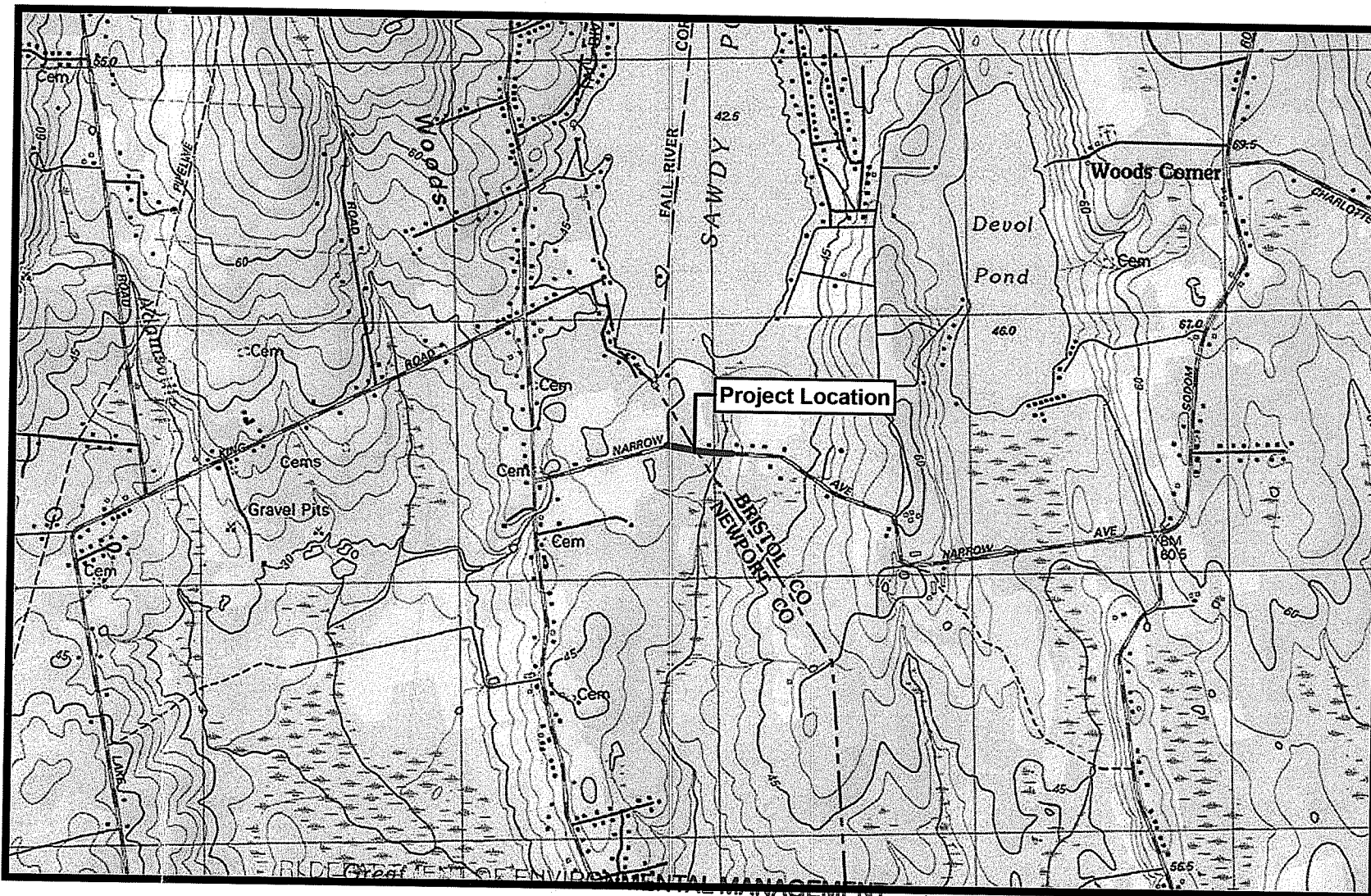
# Plan Set

Issued for: RIDEM Request for Preliminary Determination  
Date Issued: 1/24/2022

# Electric Distribution Line Extension / Utility Pole Installation Project

Assessor's Plat 604 Lot 103 and Narrow Avenue, Tiverton, Rhode Island

| Sheet Index |                     |              |
|-------------|---------------------|--------------|
| Number      | Drawing Title       | Latest Issue |
| 1           | Notes               | 1/24/2022    |
| 2           | Access and BMP Plan | 1/24/2022    |
| 3           | Detail Sheet        | 1/24/2022    |



Site Location Map

nationalgrid



OFFICE OF WATER RESOURCES  
FRESHWATER WETLANDS PROGRAM  
APPROVED WITH CONDITIONS AS  
SPECIFIED IN THE LETTER OF APPROVAL  
DATED: JUL - 6 2022 FILE #: 22-0141  
NO CHANGES ALLOWED WITHOUT PRIOR APPROVAL  
APPROVED PLANS MUST BE AT CONSTRUCTION SITE  
*Nancy L. Freeman*

Environmental Management  
APR 15 2022  
Office of Water Resources

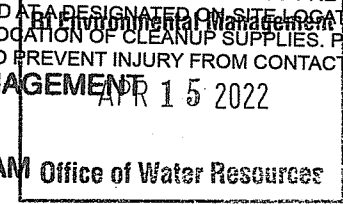
**EXISTING CONDITIONS INFORMATION:  
REFERENCES:**

1. WETLAND DELINEATION WAS PERFORMED BY VHB, PROVIDENCE OFFICE. STRUCTURE AND FLAG LOCATIONS WERE LOCATED BY A GLOBAL POSITIONING SYSTEM (GPS) FIELD SURVEY CONDUCTED BY VHB JANUARY 2022. THIS SURVEY CONFORMS TO A CLASS IV STANDARD AS DEFINED IN THE PROCEDURAL AND TECHNICAL STANDARDS FOR PERFORMING LAND SURVEYING IN THE STATE OF RHODE ISLAND AND PROVIDENCE PLANTATIONS.

**EROSION AND SEDIMENT CONTROL NOTES:**

1. PRIOR TO STARTING ANY SITE WORK, THE CONTRACTOR SHALL NOTIFY APPROPRIATE AGENCIES AND SHALL INSTALL EROSION CONTROL MEASURES AS SHOWN ON THE PLANS AND AS IDENTIFIED IN FEDERAL, STATE AND LOCAL APPROVAL DOCUMENTS PERTAINING TO THIS PROJECT.
2. A SOIL EROSION AND SEDIMENTATION CONTROL PLAN HAS BEEN DESIGNED TO PROTECT ON-SITE WETLANDS AND WATERCOURSES AND OFF-SITE AREAS DURING AND AFTER CONSTRUCTION.
3. IN AREAS WHERE HIGH RUNOFF VELOCITIES OR HIGH SEDIMENT LOADS ARE EXPECTED, TWO LINES OF COMPOST FILTER SOCK (CFS) WILL BE INSTALLED BACK TO BACK.
4. TYPICAL CRUSHED-STONE CONSTRUCTION ENTRANCE/EXITS WILL BE CONSTRUCTED AT EACH STREET ACCESS POINT WITHIN THE PROJECT AREA.
5. ONCE WORK IS COMPLETE, FINAL SURFACE TREATMENT CONSISTING OF STRAW OR CELLULOSE MULCH WILL BE APPLIED TO STABILIZE THE DISTURBED AREAS. ANY SOIL DISTURBANCE ASSOCIATED WITH EQUIPMENT ACCESS TO STRUCTURES OR STRUCTURE EXCAVATIONS SHOULD BE MULCHED WITH STRAW ON ALL DISTURBED AREAS AS SOON AS POSSIBLE BUT NOT MORE THAN 14 DAYS AFTER THE CONSTRUCTION ACTIVITY IN THAT AREA HAS TEMPORARILY OR PERMANENTLY CEASED.
6. IN ACCORDANCE WITH THE RIPDES GENERAL PERMIT, ALL STORMWATER CONTROL MEASURES, DISTURBED AREAS, AREAS USED FOR THE STORAGE OF MATERIALS THAT ARE EXPOSED TO PRECIPITATION (INCLUDING UNSTABILIZED SOIL STOCKPILES), DISCHARGE LOCATIONS AND LOCATIONS WHERE VEHICLES ENTER OR EXIT THE SITE, AS OUTLINED IN PART IV OF THIS PERMIT, MUST BE INSPECTED BY OR UNDER THE SUPERVISION OF THE APPLICANT AT LEAST ONCE EVERY SEVEN (7) CALENDAR DAYS AND WITHIN TWENTY-FOUR (24) HOURS AFTER ANY STORM EVENT WHICH GENERATES AT LEAST 0.25 INCHES OF RAINFALL PER TWENTY-FOUR (24) HOUR PERIOD AND/OR AFTER A SIGNIFICANT AMOUNT OF RUNOFF. SUCH AREAS SHALL BE INSPECTED FOR EVIDENCE OF, OR THE POTENTIAL FOR, POLLUTANTS ENTERING THE WATERS OF THE STATE OR A SEPARATE STORM SEWER SYSTEM. ALL BMPs SHALL BE MAINTAINED TO PREVENT UNCONTROLLED RELEASES OF MEASURABLE AMOUNTS OF SEDIMENT OR SEDIMENT LADEN WATER FROM TRAVELING BEYOND THE LIMITS OF DISTURBANCE.
7. SEDIMENT SHALL BE REMOVED FROM BEHIND BARRIERS IF GREATER THAN 6 INCHES DEEP OR AS NEEDED.
8. DAMAGED OR DETERIORATED EROSION/SEDIMENTATION CONTROL ITEMS WILL BE REPAIRED IMMEDIATELY AFTER IDENTIFICATION.
9. EROSION CONTROL MEASURES SHALL REMAIN IN PLACE UNTIL ALL DISTURBED EARTH HAS BEEN SECURELY STABILIZED. ONCE THE SITE IS STABILIZED, THE STRAW BALES WILL BE REMOVED OR BROKEN UP AND SPREAD AS MULCH. ALL OTHER CONTROLS SHALL BE REMOVED AND PROPERLY DISPOSED OF BY THE CONTRACTOR.
10. IN THE EVENT OF A FUEL SPILL OR EQUIPMENT MALFUNCTION RESULTING IN A RELEASE OF HAZARDOUS MATERIAL, ALL WORK WILL BE STOPPED IN THIS AREA UNTIL THE RELEASE/SPILL IS CLEANED UP.
11. EQUIPMENT USED FOR CONSTRUCTION WILL BE PROPERLY MAINTAINED AND OPERATED TO REDUCE THE CHANCES OF SPILL OCCURRENCES OF PETROLEUM PRODUCTS. REFUELING OF EQUIPMENT WILL BE REQUIRED TO CARRY SPILL CONTAINMENT AND PREVENTION DEVICES (I.E., ABSORBENT PADS, CLEAN UP RAGS, FIVE GALLON CONTAINERS, ABSORBENT MATERIAL, ETC.) AT ALL TIMES. IN ADDITION, MAINTENANCE EQUIPMENT AND REPLACEMENT PARTS FOR CONSTRUCTION EQUIPMENT WILL BE ON HAND TO REPAIR FAILURES AND STOP A SPILL IN THE EVENT OF EQUIPMENT MALFUNCTION.
12. ANY HAZARDOUS WASTE SPILLS SHALL BE CLEANED UP IMMEDIATELY, AND IF THE SPILL AMOUNT IS EQUAL TO OR EXCEEDS THE EPA REPORTABLE QUANTITY (RQ) FOR THAT SUBSTANCE IN ACCORDANCE WITH 40 CFR PARTS 1010, 117, OR 302, THE CONTRACTOR SHALL IMMEDIATELY CONTACT THE NATIONAL RESPONSE CENTER AT 1-800-424-8802. THE CONTRACTOR WILL ALSO BE RESPONSIBLE FOR SUBMITTING IN WRITING A DESCRIPTION OF THE RELEASE TO THE EPA REGIONAL OFFICE AND RIDEM PROVIDING THE DATE AND CIRCUMSTANCES OF THE RELEASE AND THE STEPS TO BE TAKEN TO PREVENT ANOTHER RELEASE. DIRECTIONS FOR CLEANING UP SPILLS SHALL BE CLEARLY POSTED AT A DESIGNATED ON-SITE LOCATION, AND CONSTRUCTION PERSONNEL SHALL BE MADE AWARE OF THE PROCEDURES AND LOCATION OF CLEANUP SUPPLIES. PERSONNEL SHALL WEAR APPROPRIATE PROTECTIVE GEAR AND HAVE PROPER TRAINING TO PREVENT INJURY FROM CONTACT WITH ANY HAZARDOUS SUBSTANCES.
13. NO GRADE CHANGES ARE PROPOSED.

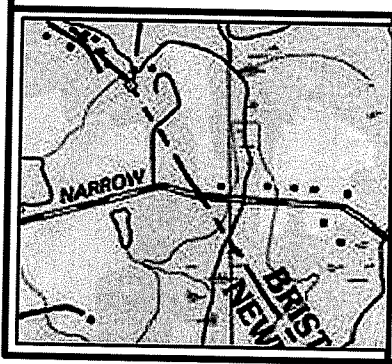
RI DEPARTMENT OF ENVIRONMENTAL MANAGEMENT  
 OFFICE OF WATER RESOURCES  
 FRESHWATER WETLANDS PROGRAM  
 Office of Water Resources

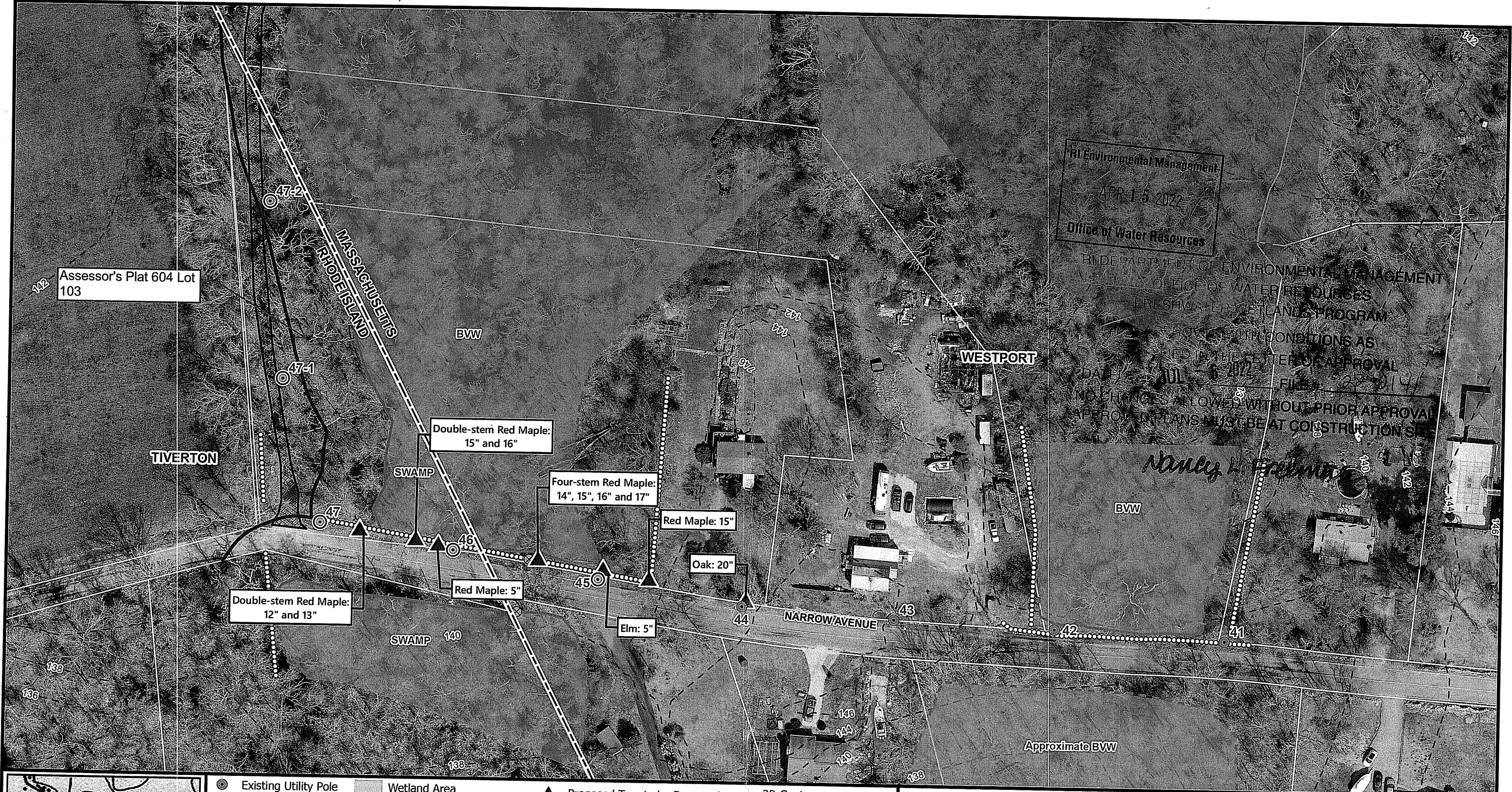


APPROVED WITH CONDITIONS AS SPECIFIED IN THE LETTER OF APPROVAL

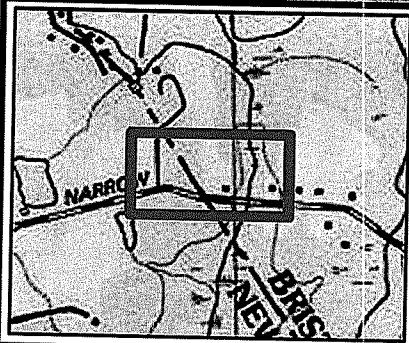
DATED: JUL - 6 2022 FILE #: 22-0141  
 NO CHANGES ALLOWED WITHOUT APPROVAL  
 APPROVED PLAN MUST BE AT CONSTRUCTION SITE  
**Narrow Avenue  
 Floodwater Installation Project**

Notes  
 Tiverton, RI  
 Page 1 of 3

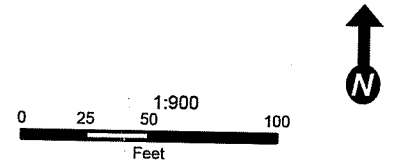




RI Environmental Management  
 APR 15 2022  
 Office of Water Resources  
 RI DEPARTMENT OF ENVIRONMENTAL MANAGEMENT  
 OFFICE OF WATER RESOURCES  
 FRESHWATER WETLANDS PROGRAM  
 APPROVED WITH CONDITIONS AS  
 STATED IN THE LETTER OF APPROVAL  
 DATE: JUL 6 2022  
 FILE: 23-014  
 NO CHANGES ALLOWED WITHOUT PRIOR APPROVAL  
 APPROVAL PLANS MUST BE AT CONSTRUCTION SITE  
*Nancy H. Freeman*



- Existing Utility Pole
- Proposed Utility Pole
- ⊗ Culvert
- ▭ State Boundary
- Wetland Area
- - - Approximate Wetland Edge
- Delineated Wetland Edge
- RI 50' Perimeter Wetland
- ▲ Proposed Tree to be Removed
- Stone Wall
- Erosion Control
- - - 2ft Contours
- ▭ Parcel Boundary
- ▨ FEMA 100-Year Floodplain
- ▩ Existing Gravel Driveway



**Assessor's Plat 604 Lot 103 and  
 Narrow Avenue  
 Utility Pole Installation Project**

Soil Erosion and Sediment Control Plan  
 Tiverton, RI

nationalgrid



|  |          |   |
|--|----------|---|
| <p><b>nationalgrid</b> ENVIRONMENTAL GUIDANCE</p> <p>SUBJECT: Access, Maintenance and Construction Best Management Practices</p> | Doc. No. | EG-303NE  |
|  | Page     | 7-4   |
|  | Date     | 02/20/18  |
|  |          | Reference: EP No. 3 - Natural Resource Protection (Chapter 6) |

**BMP DETAIL**  
SCALE: NONE

**PLAN**

**NOTES**

1. PRODUCT TO BE FILTREXX SILT SOXX OR APPROVED EQUAL BY NATIONAL GRID ENVIRONMENTAL SCIENTIST.
2. ALL MATERIAL TO MEET FILTREXX SPECIFICATIONS.
3. FILTER MEDIA FILL TO MEET APPLICATION REQUIREMENTS.
4. MESH CONTAINMENT MATERIAL SHOULD BE KNITTED PHOTODEGRADABLE OR BIODEGRADABLE MATERIAL, WITH OPENING SIZES BETWEEN 1/8" - 3/8".
5. COMPOST MEDIA SHOULD HAVE PARTICLE SIZE WHERE 99% < 2", 50% > 1/2".
6. COMPOST MATERIAL TO BE DISPERSED ON SITE, AS DETERMINED BY NATIONAL GRID ENVIRONMENTAL SCIENTIST.

**BMP PICTURE**

\* PICTURE AND DETAIL PROVIDED BY FILTREXX LAND IMPROVEMENT SYSTEMS APPROVED BY VICE PRESIDENT, ENVIRONMENTAL SERVICES. PRINTED COPIES ARE NOT DOCUMENT CONTROLLED. FOR LATEST AUTHORIZED VERSION PLEASE REFER TO THE NATIONAL GRID ENVIRONMENTAL INFOINET SITE.

SEC-4  
SILT SOXX \*

Detail #1

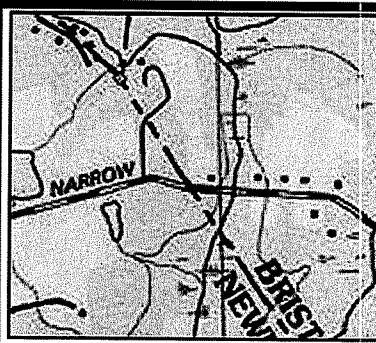
RI Environmental Management  
APR 15 2022  
Office of Water Resources

RI DEPARTMENT OF ENVIRONMENTAL MANAGEMENT  
OFFICE OF WATER RESOURCES  
FRESHWATER WETLANDS PROGRAM

APPROVED WITH CONDITIONS AS  
SPECIFIED IN THE LETTER OF APPROVAL  
DATED: JUL - 6 2022 FILE #: 22-0141

NO CHANGES ALLOWED WITHOUT PRIOR APPROVAL  
APPROVED PLANS MUST BE AT CONSTRUCTION SITE

*Nancy L. Freeman*



**Narrow Avenue**  
**Utility Pole Installation Project**

Details  
Tiverton, RI

Page 3 of 3

nationalgrid

