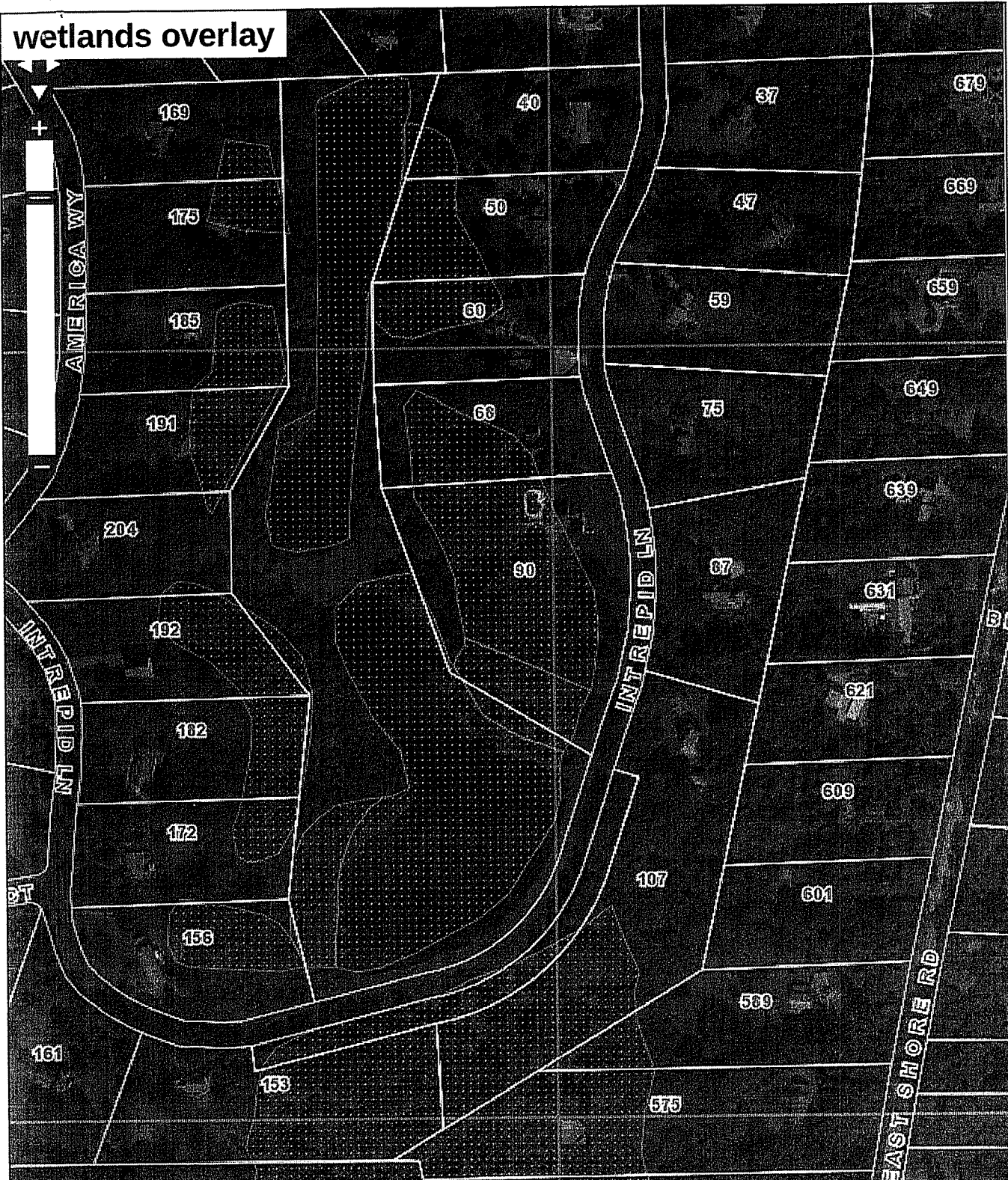


wetlands overlay



Google

Imagery ©2022, MassGIS, Commonwealth of Massachusetts EOE, Maxar Technologies, RIGIS, USDA/FPAC/GEO



Town of Jamestown, Rhode Island

DEPARTMENT OF ENVIRONMENTAL MANAGEMENT
 OFFICE OF WATER RESOURCES
 MainStreetGIS, LLC
 www.MainStreetGIS.com

FRESHWATER WETLANDS PROGRAM

APPROVED WITH CONDITIONS AS

SPECIFIED IN THE LETTER OF APPROVAL

DATED: JUN 03 2022

FILE #: 22-0149

NO CHANGES ALLOWED WITHOUT PRIOR APPROVAL

APPROVED PLANS FOR CONSTRUCTION SITE

Handwritten signature: Anthony A. Freeman

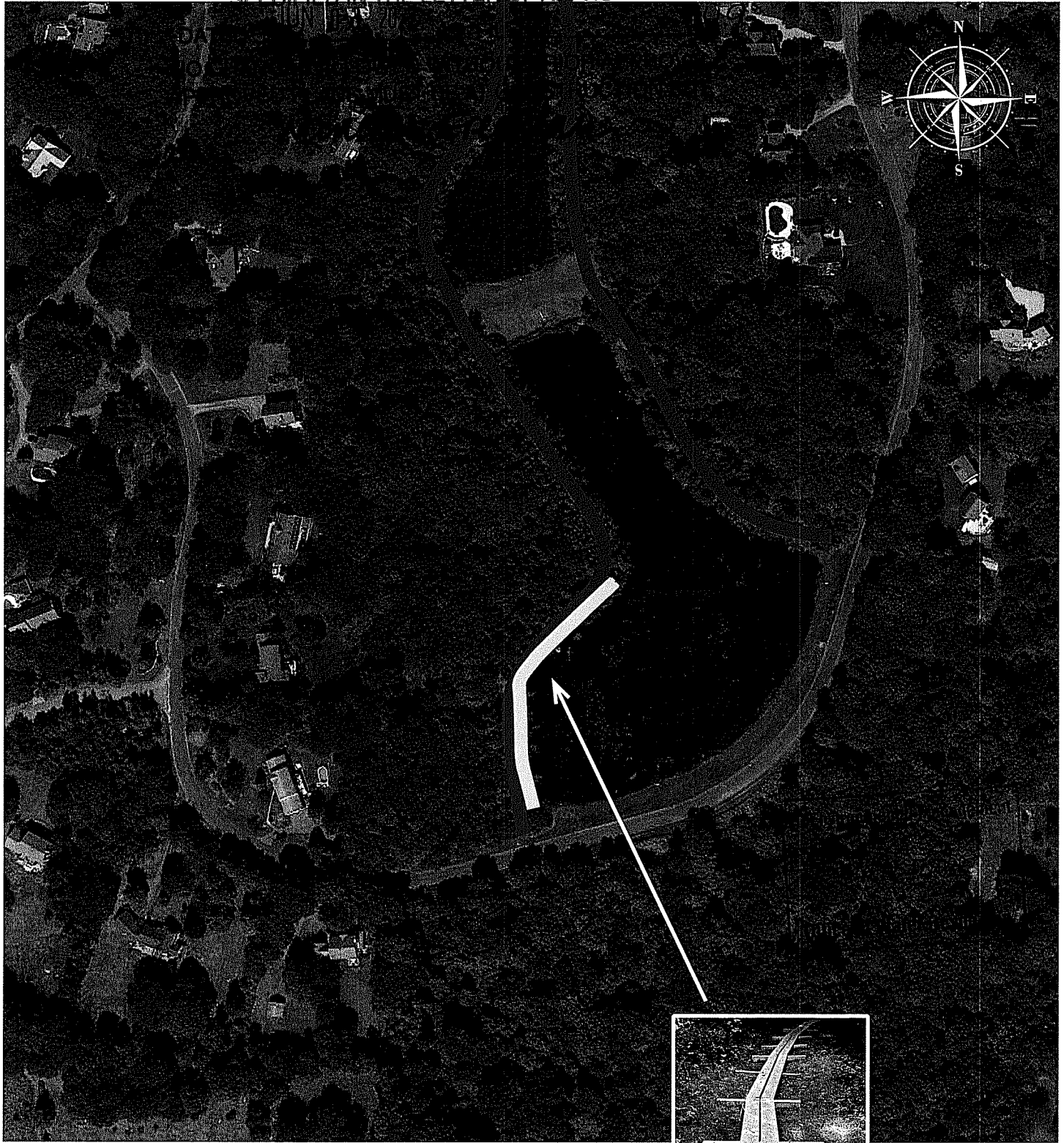
Printed on 4/20/2022
 Environmental Management
 This map is for informational purposes only. It is not for appraisal of, description of, or conveyance of land. The Town of Jamestown, Rhode Island and MainStreetGIS, LLC assume no liability or responsibility for the information contained herein.

APR 25 2022

Office of Water Resources

RI DEPARTMENT OF ENVIRONMENTAL MANAGEMENT
Rainbow Pond Boardwalk Proposal
FRESHWATER WETLANDS PROGRAM
April 2022

APPROVED WITH CONDITIONS AS
SPECIFIED IN THE LETTER OF APPROVAL



300 ft

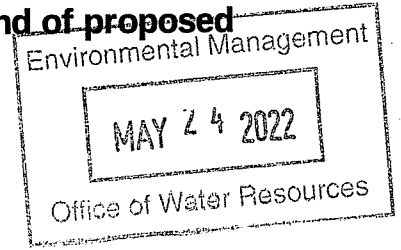
- Existing Trail
- Proposed Boardwalk Section



sample bridge
approx. 350 ft

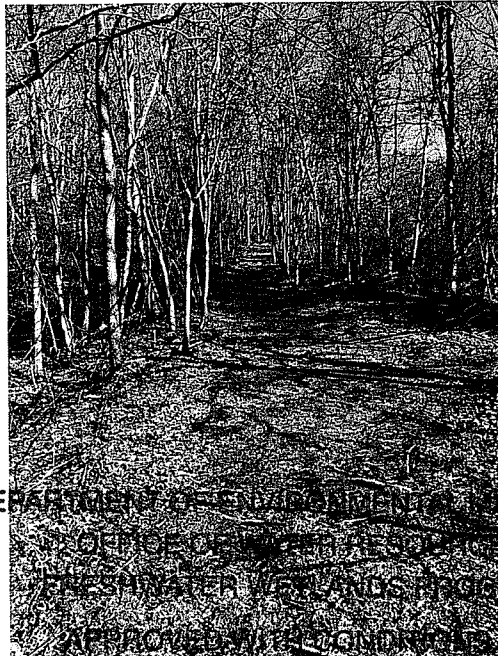
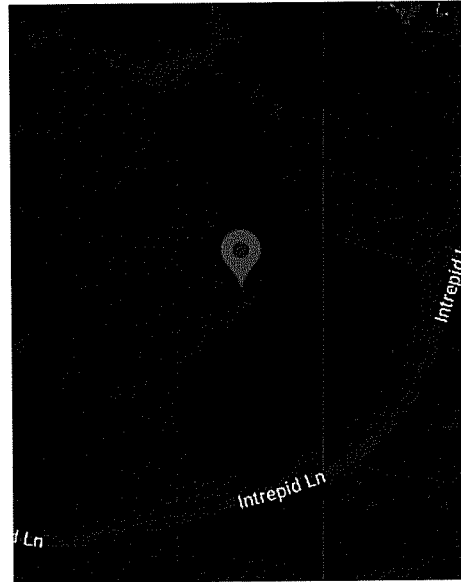
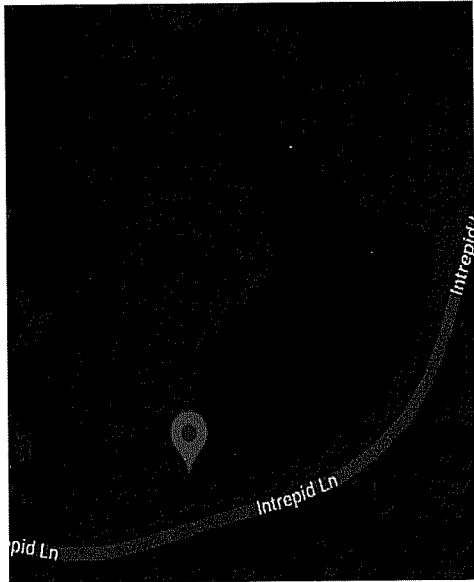
Rainbow Pond Path with Wetlands Markings

GPS Coordinates and stakes represent beginning and end of proposed boardwalk over wetlands (updated May 2022)



Start Point -
41.545268, -71.368568
<https://goo.gl/maps/zkqdoxKeBFd3sx9f6>

End Point to NE -
41.546230, -71.368090
<https://goo.gl/maps/dyh1rATd4SYL4NR58>



RI DEPARTMENT OF ENVIRONMENTAL MANAGEMENT
OFFICE OF WATER RESOURCES
FRESHWATER WETLANDS PROGRAM
APPROVED WITH CONDITIONS AS

SPECIFIED IN THE LETTER OF APPROVAL

DATED: JUN 03 2022 FILE #: 22-0149

NO CHANGES ALLOWED WITHOUT PRIOR APPROVAL
APPROVED PLANS MUST BE AT CONSTRUCTION SITE

Nancy L. Freeman