

GENERAL NOTES

- THERE ARE NO KNOWN WELLS OR DRAINS OTHER THAN SHOWN WITHIN 200' OF THE PROPOSED ISDS.
- THERE ARE NO KNOWN PROPOSED OR EXISTING PUBLIC WELLS WITHIN 200' OF THE PROPOSED ISDS.
- THERE ARE NO KNOWN EXISTING OR PROPOSED SURFACE DRAINS WITHIN 15' OF THE PROPOSED ISDS.
- ALL TREES AND BUSH TO BE REMOVED WITHIN 1/2 OF THE PROPOSED LEACH FIELD.
- THE SITE DOES NOT FALL IN A WATERED PROTECTION DISTRICT OR CRITICAL RESOURCE AREA.

GEOMAT LEACHING SYSTEM NOTES

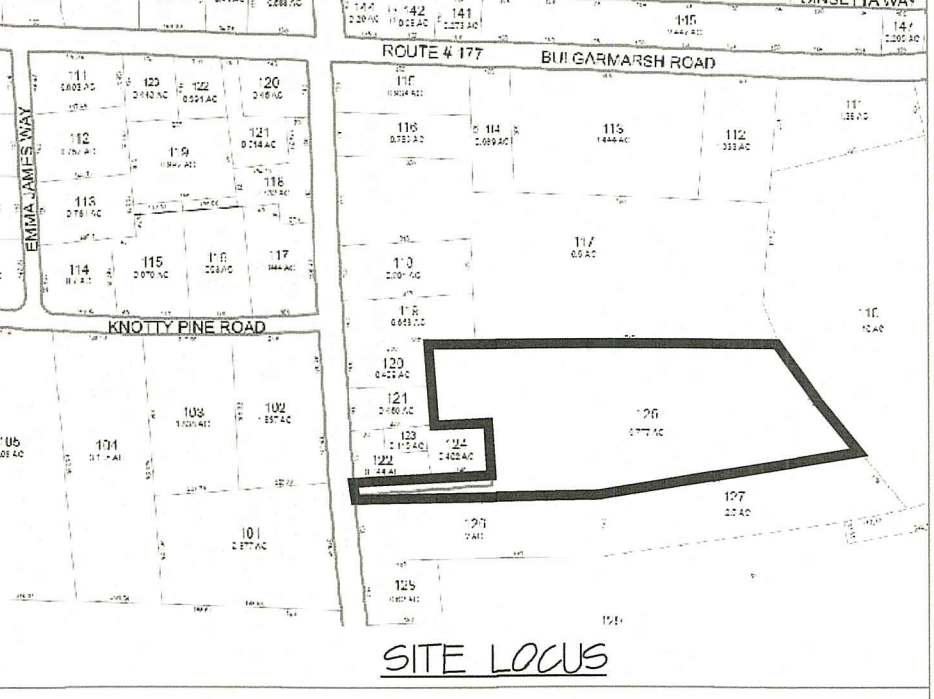
- THE AREA PROPOSED FOR THE GEOMAT LEACHING SYSTEM MUST BE PROTECTED DURING ALL PHASES OF CONSTRUCTION. IT IS REQUIRED THAT PRIOR TO ANY SOIL DISTURBANCE OR STRIPPING OF LOAM, THE AREA OF THE GEOMAT LEACHING SYSTEM IS STAKED AND PROTECTED FROM ANY SOIL DISTURBANCE. FAILURE TO PROTECT THIS AREA MAY RESULT IN THE REQUIREMENT FOR A REVISION OF THE 'DWTS' TO RELOCATE IT IN AN AREA THAT IS UNDISTURBED, AND IN SOME CASES COULD IMPACT THE SITE SIGNIFICANTLY, POSSIBLY MAKING IT UNBUILDABLE.
- ALONG A LATERAL, HOLES SHOULD BE DRILLED THROUGH THE BOTTOM OF THE PIPE (6 O'CLOCK POSITION) AT EVERY FIFTH FOOT, TO ALLOW DRAINAGE AFTER A DOSE AND PREVENT FREEZING.
- THE ENDS OF THE SWEEP ELBOWS SHALL BE READILY ACCESSIBLE BY MEANS OF A 6"-8" DIAMETER ACCESS BOX OR PORT PROXIMATE TO THE GROUND SURFACE.
- ALL OTHER REQUIREMENTS WITHIN THE DOCUMENT "RHODE ISLAND DESIGN MANUAL FOR GEOMAT 1200 & 3200 LEACHING SYSTEMS" MUST BE STRICTLY ADHERED TO.

ADVANTEX FILTER NOTES

- INSTALLATION OF ADVANTEX TREATMENT SYSTEM TO BE IN STRICT CONFORMANCE WITH THE MANUFACTURER'S SPECIFICATIONS AND REQUIREMENTS.

DISCHARGE PUMP NOTES

- THE HIGH WATER ALARM IS TO BE LOCATED IN A NORMALLY OCCUPIED SECTION OF THE BUILDING.



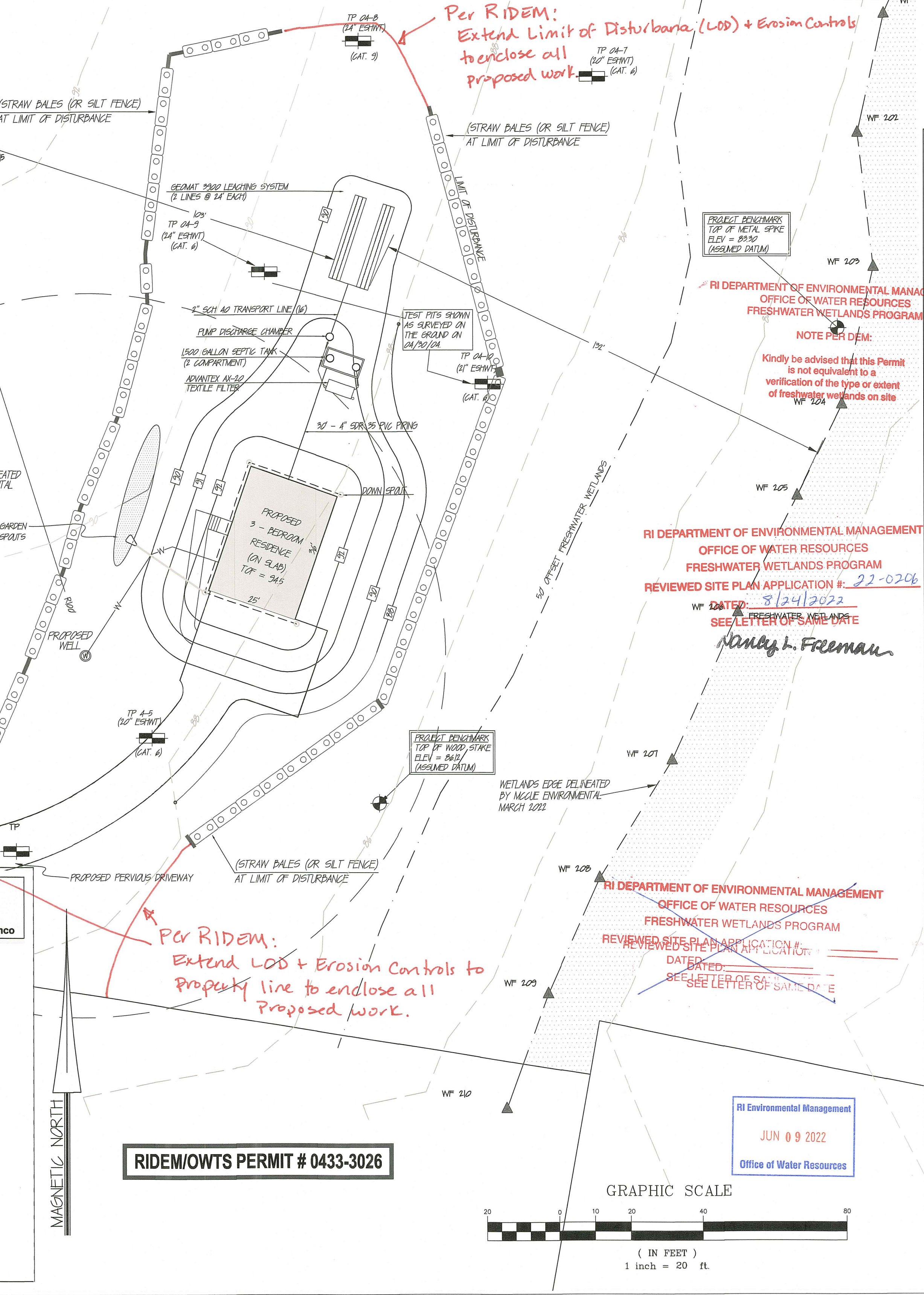
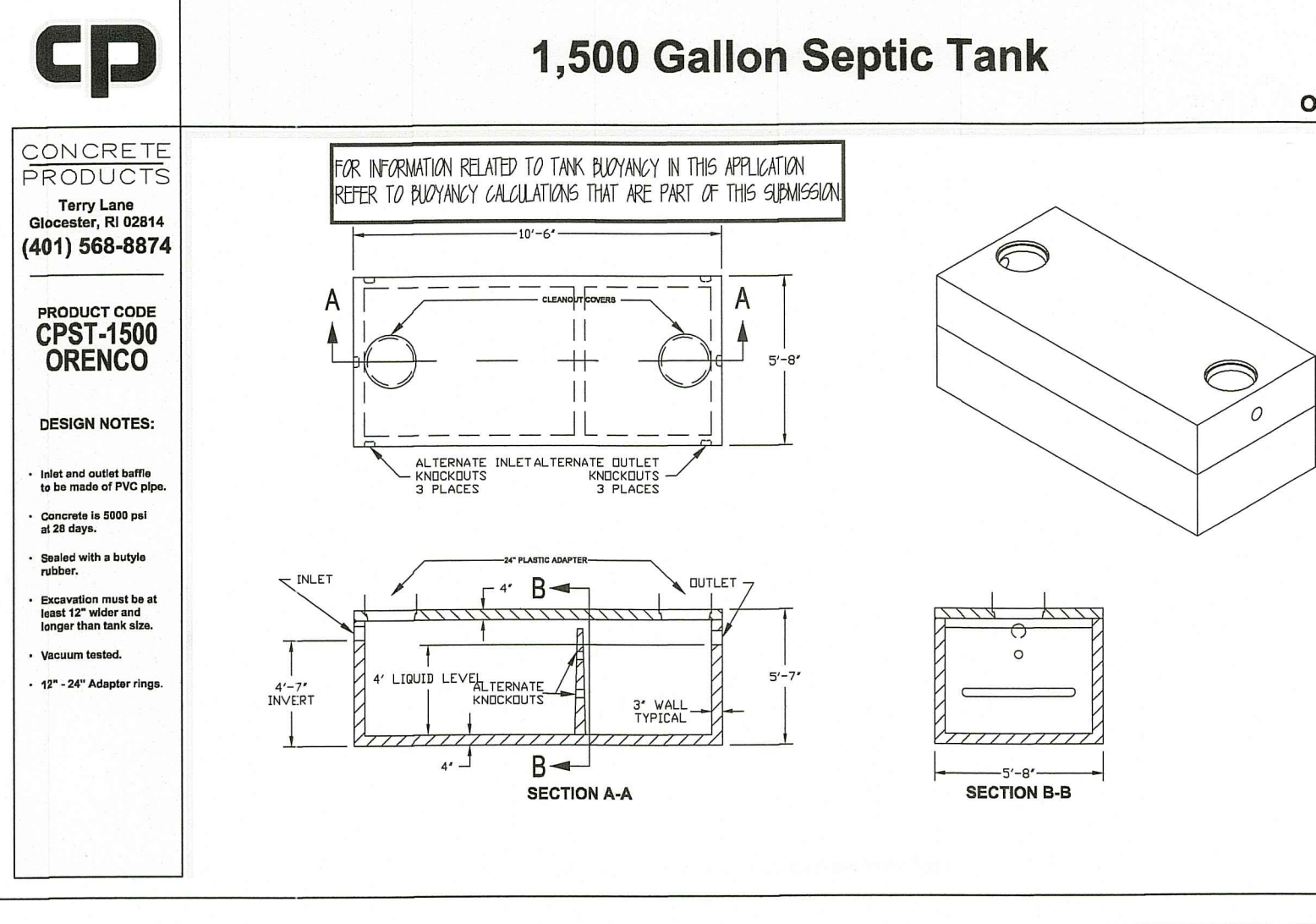
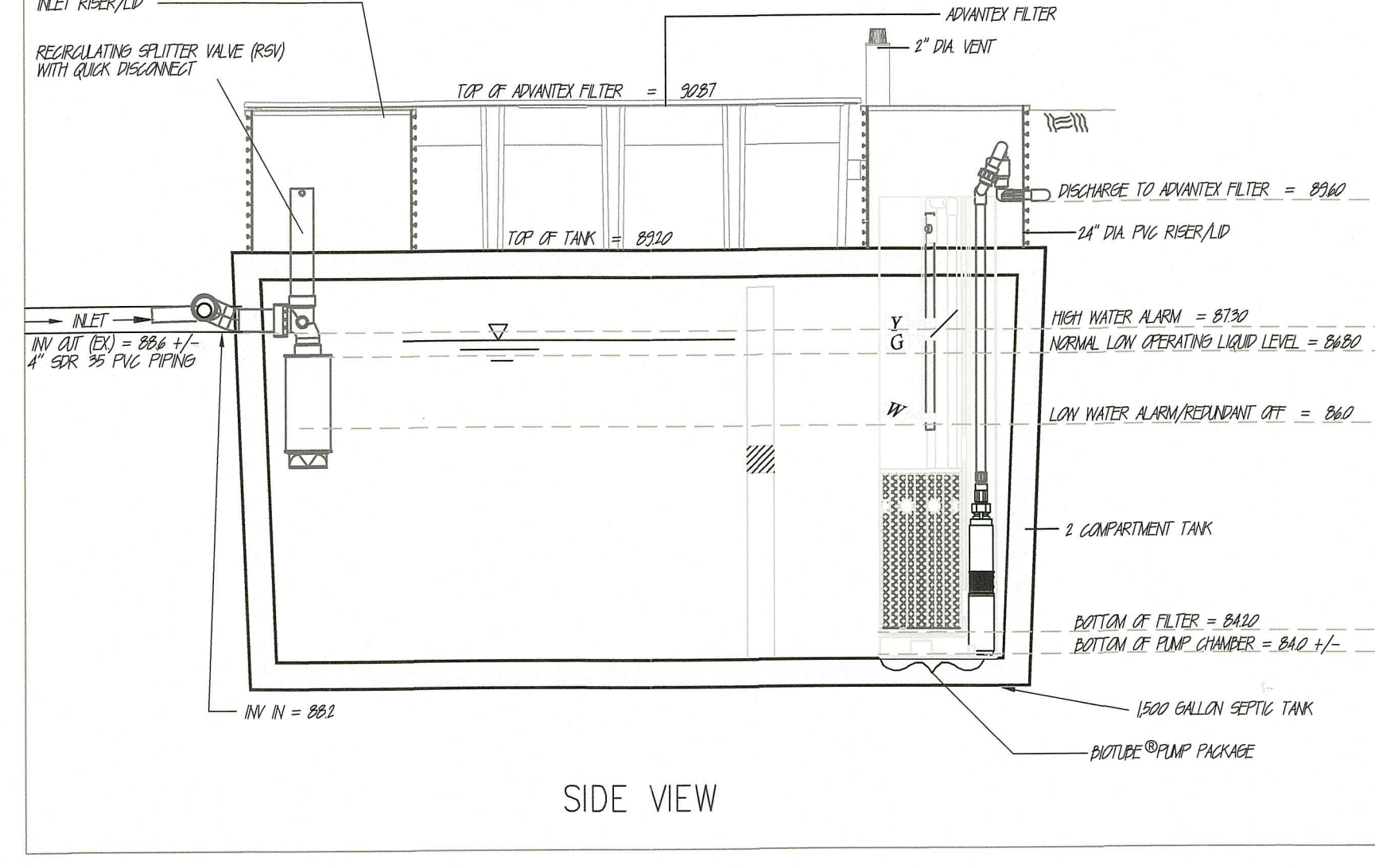
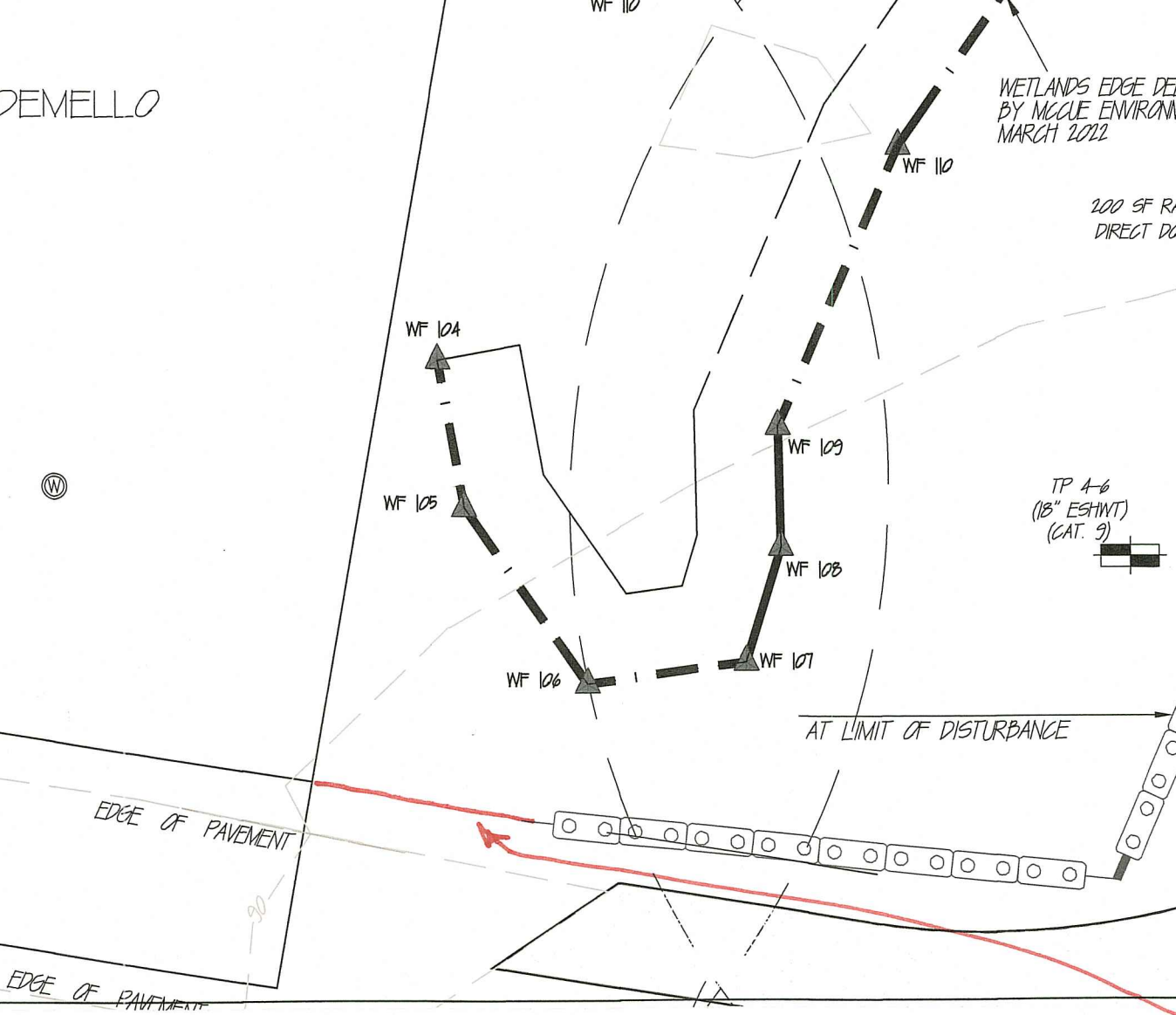
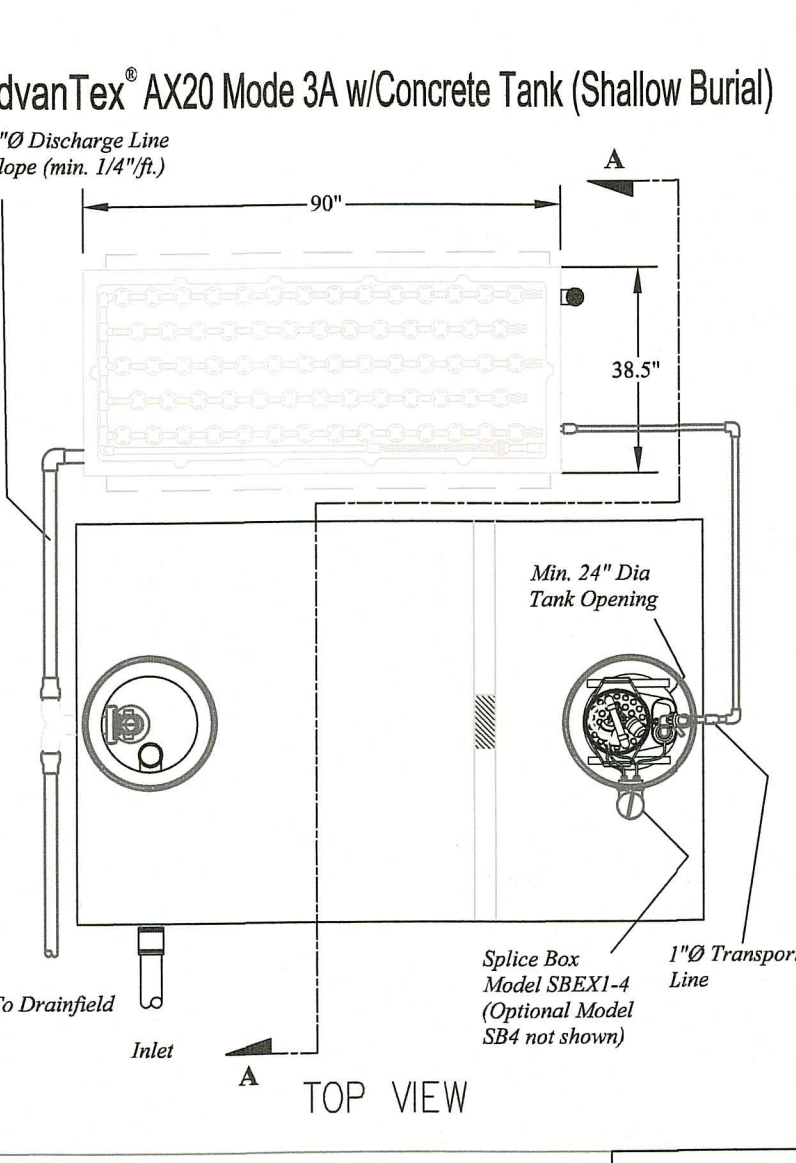
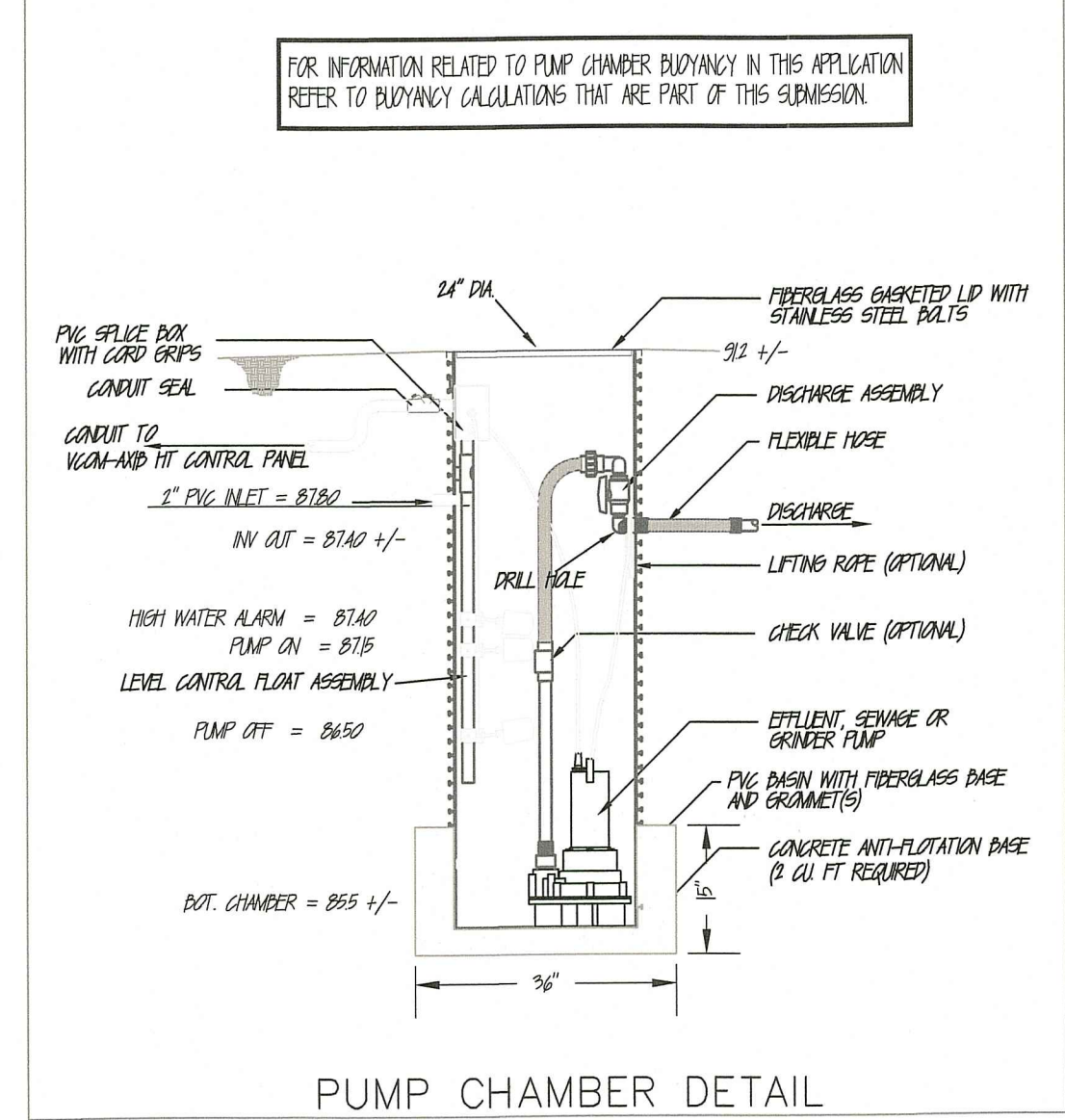
JOHN BRAGA JR.
No. 6018
John Braga, Jr.
REGISTERED PROFESSIONAL ENGINEER (CIVIL)

Pump Selection for a Pressurized System

Parameter	Value
Discharge Head (ft)	10.0
Flow Rate (gpm)	10.0
Motor Voltage (V)	115
Motor Phase	1
Motor Speed (RPM)	1725
Motor Efficiency (%)	80
Motor Power (HP)	0.5
Motor Service Factor	1.15
Motor Temperature (°C)	40
Motor Insulation Class	F
Motor Enclosure	TEFC
Motor Protection Class	IP44
Motor Mounting	Flange
Motor Terminal Box	Open Drip Proof
Motor Lead Length (ft)	10
Motor Lead Type	THHN
Motor Lead Voltage (V)	115
Motor Lead Phase	3
Motor Lead Temperature (°C)	90
Motor Lead Insulation Class	F
Motor Lead Enclosure	THHN
Motor Lead Protection Class	IP44
Motor Lead Mounting	Flange
Motor Lead Terminal Box	Open Drip Proof
Motor Lead Lead Length (ft)	10
Motor Lead Lead Type	THHN
Motor Lead Lead Voltage (V)	115
Motor Lead Lead Phase	3
Motor Lead Lead Temperature (°C)	90
Motor Lead Lead Insulation Class	F
Motor Lead Lead Enclosure	THHN
Motor Lead Lead Protection Class	IP44
Motor Lead Lead Mounting	Flange
Motor Lead Lead Terminal Box	Open Drip Proof

Pump Selection for a Pressurized System

Parameter	Value
Discharge Head (ft)	10.0
Flow Rate (gpm)	10.0
Motor Voltage (V)	115
Motor Phase	1
Motor Speed (RPM)	1725
Motor Efficiency (%)	80
Motor Power (HP)	0.5
Motor Service Factor	1.15
Motor Temperature (°C)	40
Motor Insulation Class	F
Motor Enclosure	TEFC
Motor Protection Class	IP44
Motor Mounting	Flange
Motor Terminal Box	Open Drip Proof
Motor Lead Length (ft)	10
Motor Lead Type	THHN
Motor Lead Voltage (V)	115
Motor Lead Phase	3
Motor Lead Temperature (°C)	90
Motor Lead Insulation Class	F
Motor Lead Enclosure	THHN
Motor Lead Protection Class	IP44
Motor Lead Mounting	Flange
Motor Lead Terminal Box	Open Drip Proof



LEGEND

- PROPERTY LINE
- BUILDING SETBACK LINE
- EDGE OF PAVEMENT
- CAPE COD BERM
- OVERHEAD WIRES
- TELEPHONE LINE
- ELECTRIC/CABLE/PHONE
- GAS LINE
- EXISTING CONTOUR
- PROPOSED CONTOUR
- SPOT ELEVATION
- STONE WALL
- RAILROAD
- REBAR/PIN/IRON PIPE
- DRILL HOLE
- WATER SHUTOFF
- HYDRANT
- STAKED HAYDALES
- SLT FENCING
- UNDERGROUND UTILITY PAD
- CATCH BASIN
- DRAINAGE MANHOLE
- SEWER MANHOLE
- SOIL EVALUATION/TEST HOLE
- PERCOLATION TEST
- EXISTING UTILITY POLE
- EXISTING GUY POLE
- CONTROL PANEL

DATE: 07/20/2022

NO.	DATE	DESCRIPTION	BY
1	07/20/2022	ISSUED FOR PERMIT	J.B.

OWTS DESIGN NEW CONSTRUCTION

PROPERTY OWNERS:
ROBIN RICHARD
98 BRAYTON ROAD (REAR)
TIVERTON, RI 02878

PROJECT LOCATION:
ASSESSOR'S PLAT 217 LOT 125
98 BRAYTON ROAD (REAR)
TIVERTON, RI 02878

JOHN BRAGA & ASSOCIATES, INC.
CIVIL ENGINEERS • LAND SURVEYORS
P.O. BOX 344
PORTSMOUTH, R.I. 02871-0344
PHONE (401) 683-0101

RIDEM/OWTS PERMIT # 0433-3026

RI Environmental Management
JUN 09 2022
Office of Water Resources

GRAPHIC SCALE
1 inch = 20 ft