

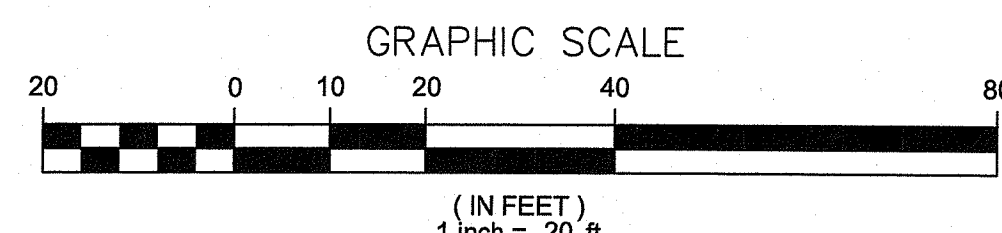
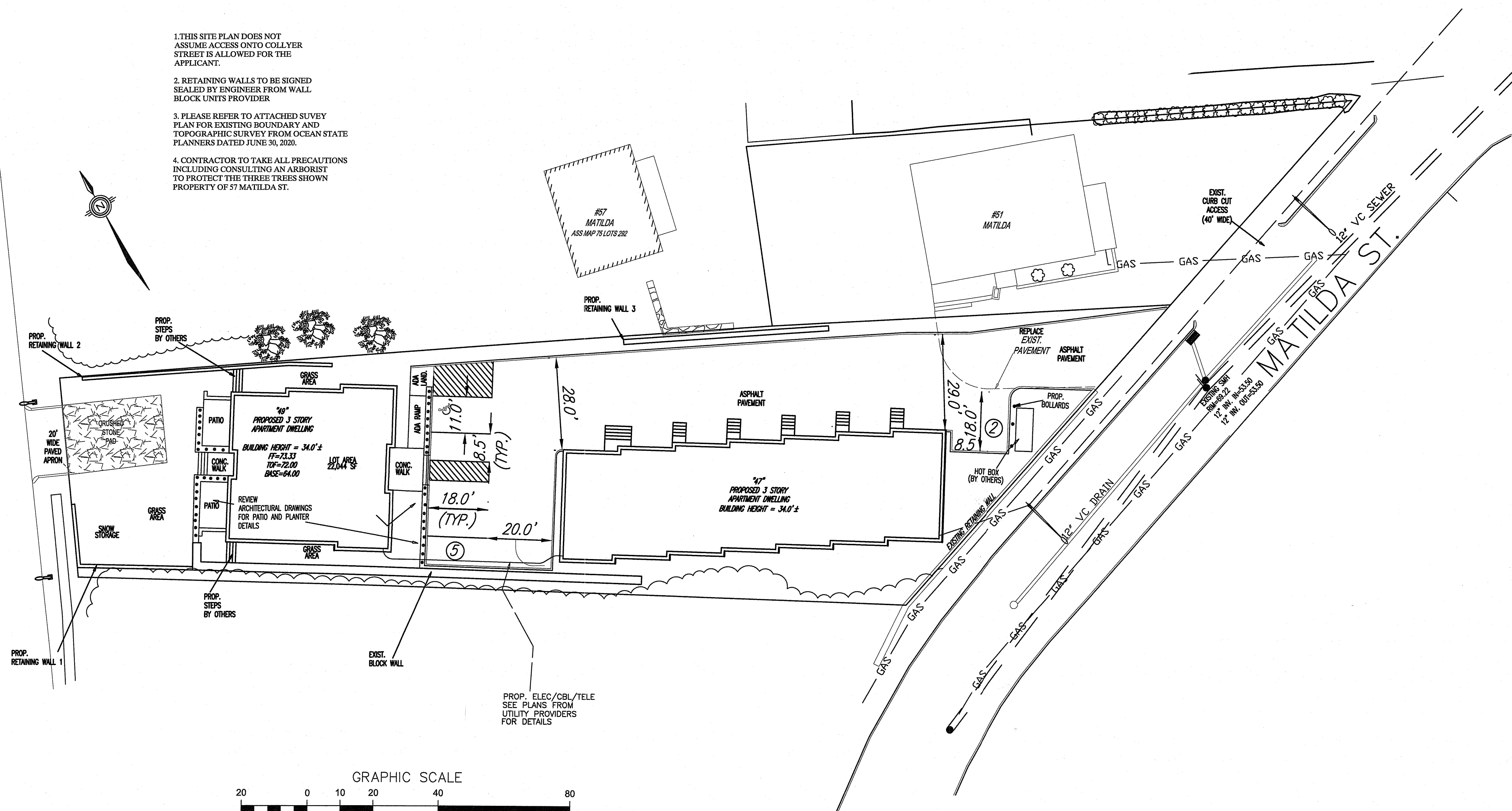
LOCUS MAP
© 2013 ESRI WORLD STREET MAPS
NOT TO SCALE

1. THIS SITE PLAN DOES NOT ASSUME ACCESS ONTO COLLYER STREET IS ALLOWED FOR THE APPLICANT.
2. RETAINING WALLS TO BE SIGNED SEALED BY ENGINEER FROM WALL BLOCK UNITS PROVIDER.
3. PLEASE REFER TO ATTACHED SURVEY PLAN FOR EXISTING BOUNDARY AND TOPOGRAPHIC SURVEY FROM OCEAN STATE PLANNERS DATED JUNE 30, 2020.
4. CONTRACTOR TO TAKE ALL PRECAUTIONS INCLUDING CONSULTING AN ARBORIST TO PROTECT THE THREE TREES SHOWN PROPERTY OF 57 MATILDA ST.

STREET

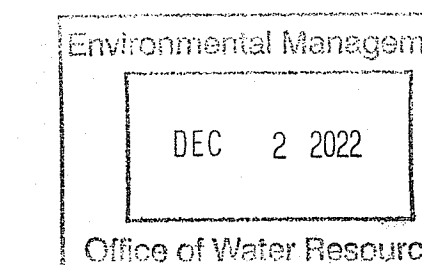
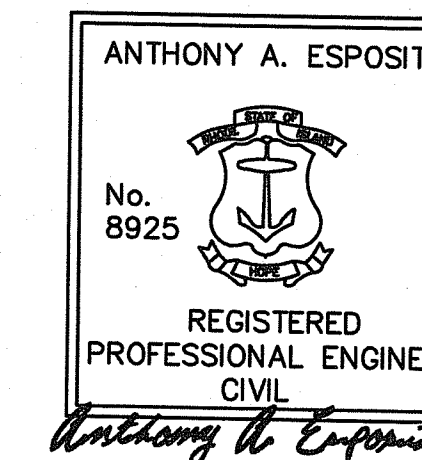
(50' PUBLIC)

COLLYER



RI DEPARTMENT OF ENVIRONMENTAL MANAGEMENT
OFFICE OF WATER RESOURCES
FRESHWATER WETLANDS PROGRAM
APPROVED WITH CONDITIONS AS
SPECIFIED IN THE LETTER OF APPROVAL
DATED: DEC 09 2022 FILE #: 22-0232
NO CHANGES ALLOWED WITHOUT PRIOR APPROVAL
APPROVED PLANS MUST BE AT CONSTRUCTION SITE

Anthony A. Esposito



**SITE LAYOUT
PLAN FOR
47 MATILDA ST.
PROVIDENCE, RI
ASS MAP 75 LOTS 297, 298
FOR
MATILDA PINES LLC
37 OGDEN ST.
PROVIDENCE, RI 02906**

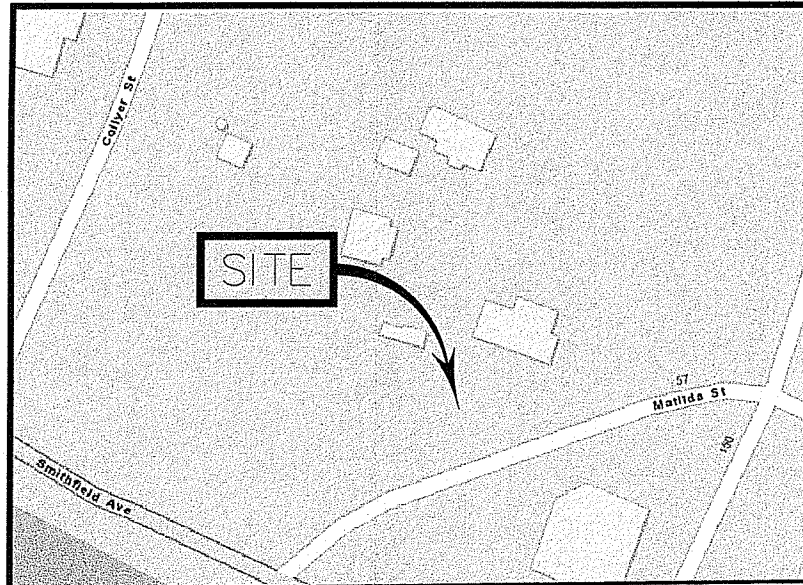


THE STATE OF RHODE ISLAND REQUIRES NOTIFICATION BY EXCAVATORS, DESIGNERS, OR ANY PERSON PREPARING TO DISTURB THE EARTH'S SURFACE ANYWHERE IN THE STATE.

- SCHEDULE OF PLANS**
SHEET 1 SITE LAYOUT PLAN
SHEET 2 GRADING & DRAINAGE PLAN
SHEET 3 UTILITY PLAN
SHEET 4 DETAILS
SHEET 5 PRE DEVELOPMENT DRAINAGE PLAN
SHEET 6 POST DEVELOPMENT DRAINAGE PLAN

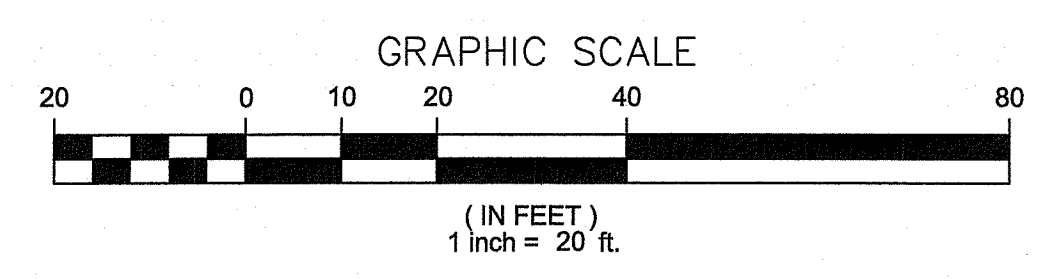
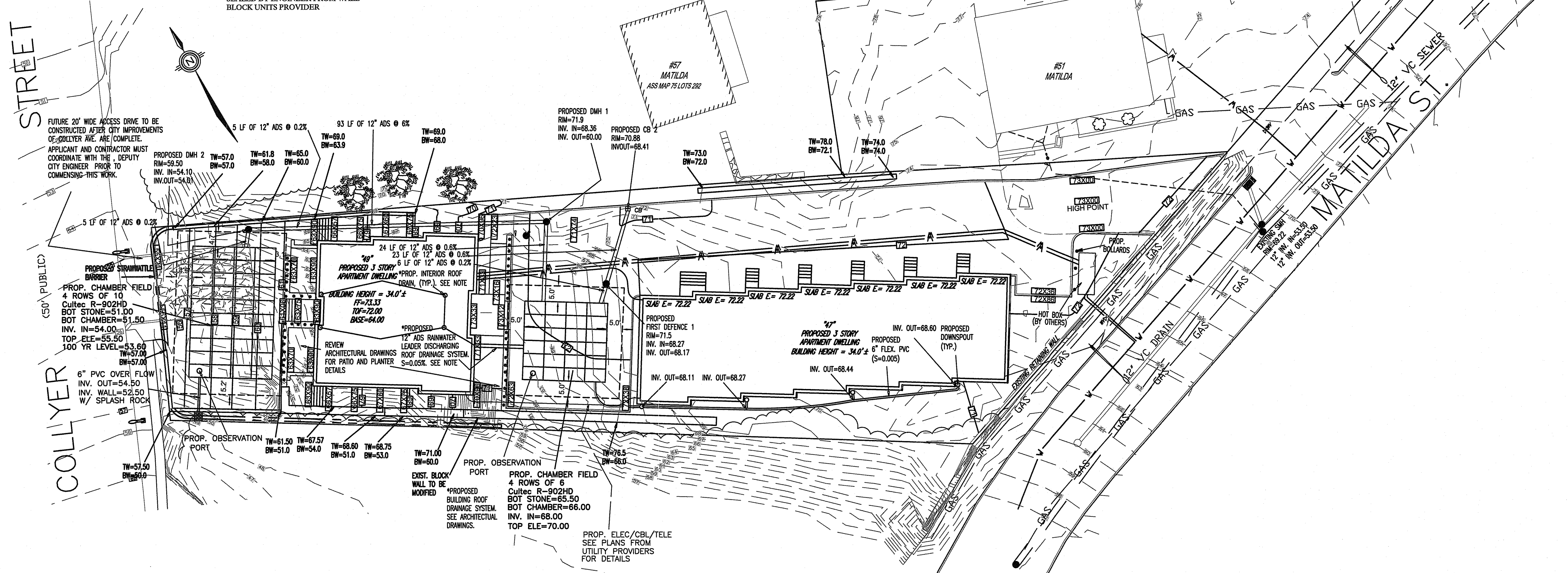
MARCH 9, 2022
REV. APRIL 27, 2022
REV. MAY 19, 2022
REV. OCTOBER 19, 2022
REV. NOVEMBER 23, 2022
SHEET 1 OF 6

PREPARED BY:
Anthony A. Esposito
Professional Engineer
12666 KENWOOD LN.
Unit C
FT. MYERS, FL 33907
508-369-4783
ltespo12@yahoo.com



LOCUS MAP
© 2013 ESRI WORLD STREET MAPS
NOT TO SCALE

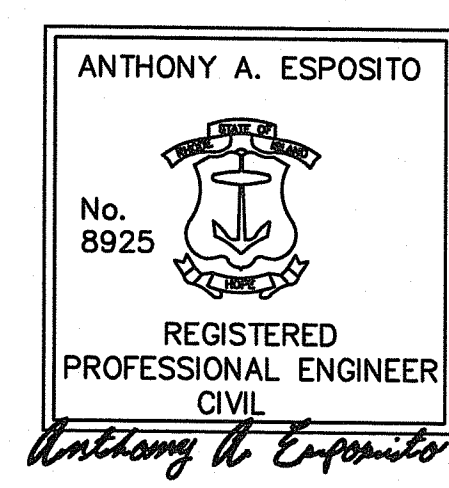
1. THIS SITE PLAN DOES NOT ASSUME ACCESS ONTO COLLYER STREET IS ALLOWED FOR THE APPLICANT.
2. RETAINING WALLS TO BE SIGNED SEALED BY ENGINEER FROM WALL BLOCK UNITS PROVIDER



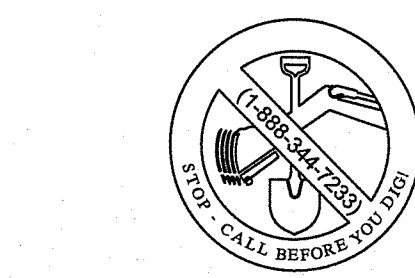
RI Environmental Management
DEC 2 2022
Office of Water Resources

RI DEPARTMENT OF ENVIRONMENTAL MANAGEMENT
OFFICE OF WATER RESOURCES
FRESHWATER WETLANDS PERMITS
APPROVED WITH CONDITIONS
SPECIFIED IN THE LETTER OF APPROVAL
DATED: DEC 09 2022 FILE # 22-0232
NO CHANGES TO BE MADE WITHOUT PRIOR APPROVAL
APPROVED PLANS MUST BE AT CONSTRUCTION SITE

Anthony A. Esposito

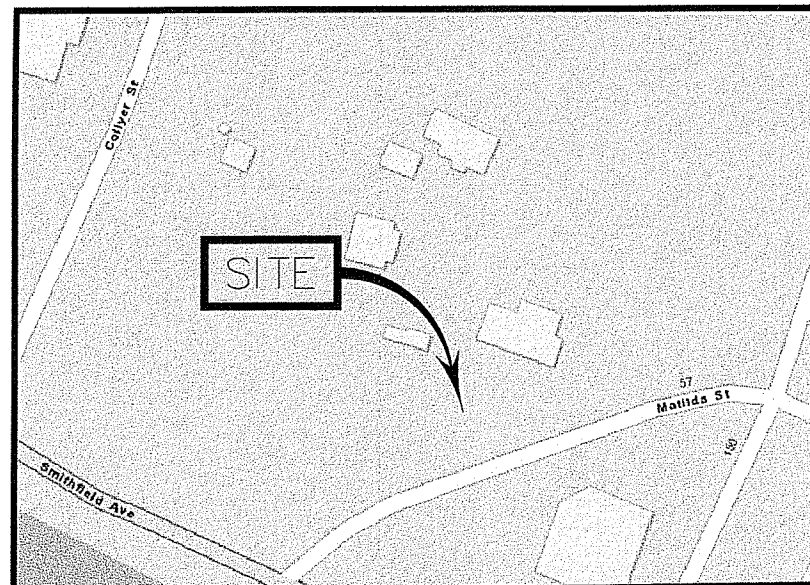


GRADING AND DRAINAGE PLAN FOR SEWER CONNECTION
47 MATILDA ST.
PROVIDENCE, RI
ASS MAP 75 LOTS 297, 298
FOR
MATILDA PINES LLC
37 OGDEN ST.
PROVIDENCE, RI 02906
MARCH 9, 2022
REV. APRIL 27, 2022
REV. MAY 19, 2022
REV. OCTOBER 19, 2022
REV. NOVEMBER 23, 2022
SHEET 2 OF 6



THE STATE OF RHODE ISLAND REQUIRES NOTIFICATION BY EXCAVATORS, DESIGNERS, OR ANY PERSON PREPARING TO DISTURB THE EARTH'S SURFACE ANYWHERE IN THE STATE.

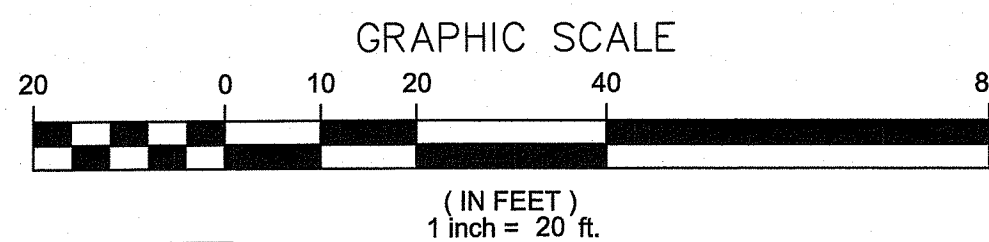
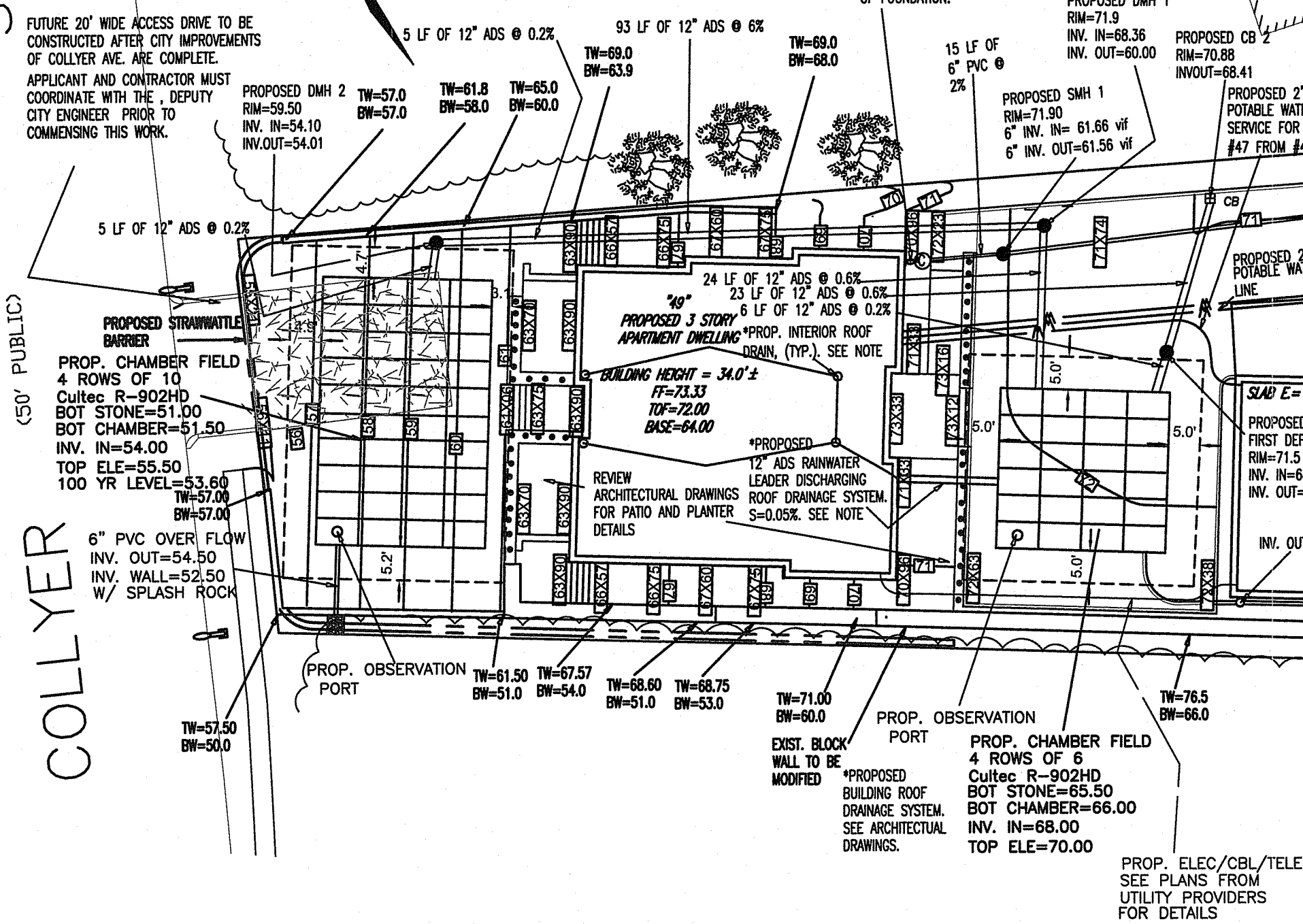
PREPARED BY:
Anthony A. Esposito
Professional Engineer
12666 KENWOOD LN.
Unit C
FT. MYERS, FL 33907
508-369-4783
ltespol2@yahoo.com



LOCUS MAP
©2013 ESRI WORLD STREET MAPS
NOT TO SCALE

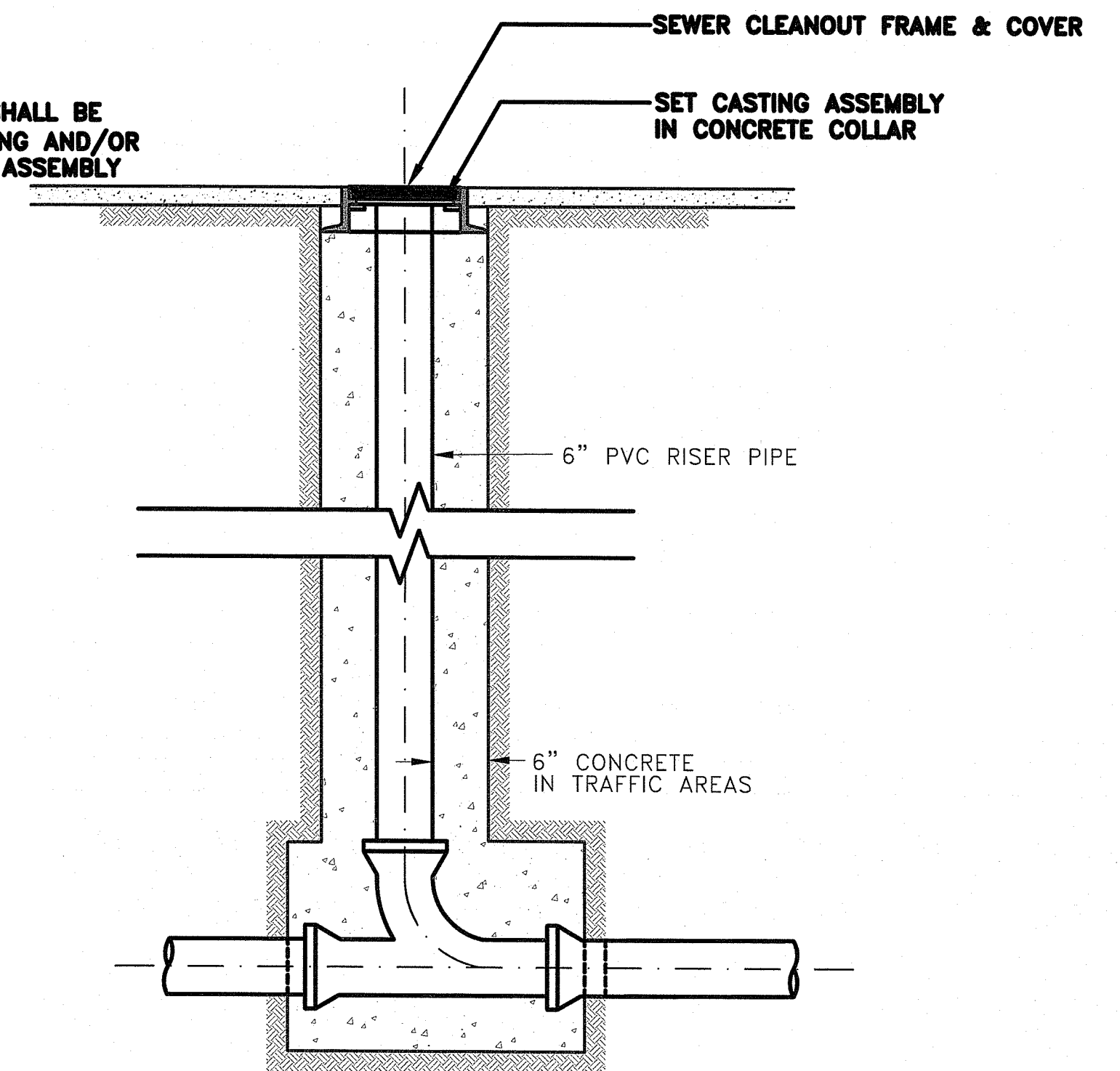
1. THIS SITE PLAN DOES NOT ASSUME ACCESS ONTO COLLYER STREET IS ALLOWED FOR THE APPLICANT.
2. RETAINING WALLS TO BE SIGNED SEALED BY ENGINEER FROM WALL BLOCK UNITS PROVIDER

STREET
COLLYER



SEWER USE CALCULATIONS:
28 BEDROOMS X 115 GPD/BEDROOM=3,220 GPD(O)
3,220 X 1/7.48 X 1/2 HR X 1/2 MIN X 1/2 SEC = .005 CFS, (O)
SLOPE = (0.03/61) * 2 = 0.0008 E 7' TO 0' FLAT
SLOPE = (2 F/S / 28.6) * 2 = 0.005 F/F
USE 1% FOR 6 INCH MAIN

NOTE:
CLEANOUT TOP SHALL BE ENCLOSED IN CASTING AND/OR FABRICATED COVER ASSEMBLY

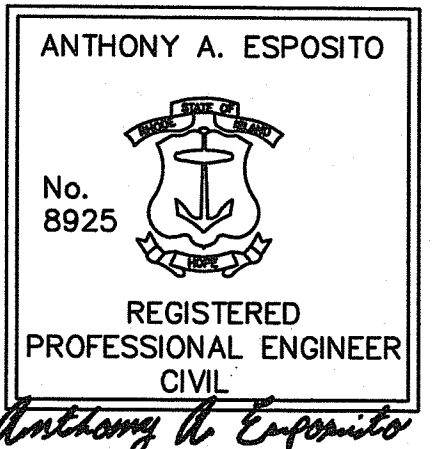


IN LINE CLEANOUT AND BACKWATER VALVES
ACCESS DETAIL
NOT TO SCALE

RI Environmental Affairs
DEC 2 2022
Office of Water Resources

THE CONTRACTOR MUST PROVIDE EXCAVATION TO CONFIRM LOCATION OF EXISTING SEWER LATERAL. PRIOR TO CONSTRUCTION AND NOTIFY THE ENGINEER OF ANY CHANGES.

RI DEPARTMENT OF ENVIRONMENTAL MANAGEMENT
OFFICE OF WATER RESOURCES
FRESHWATER WETLANDS PROGRAM
APPROVED WITH CONDITIONS AS SPECIFIED IN THE LETTER OF APPROVAL
DATED: DEC 09 2022 FILE #: 22-0232
NO CHANGES ALLOWED WITHOUT PRIOR APPROVAL
APPROVED PLANS MUST BE AT CONSTRUCTION SITE

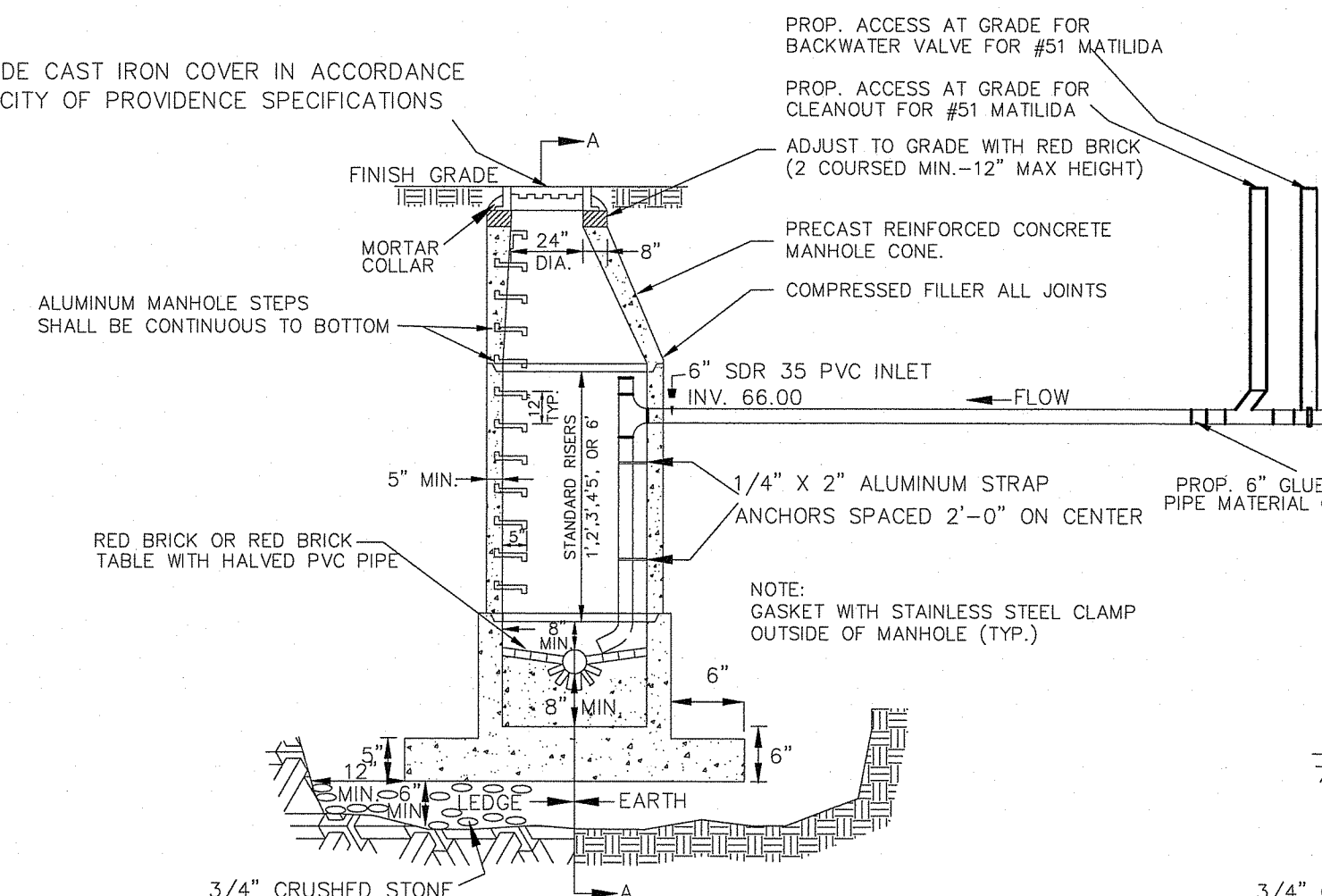


Nancy L. Freeman

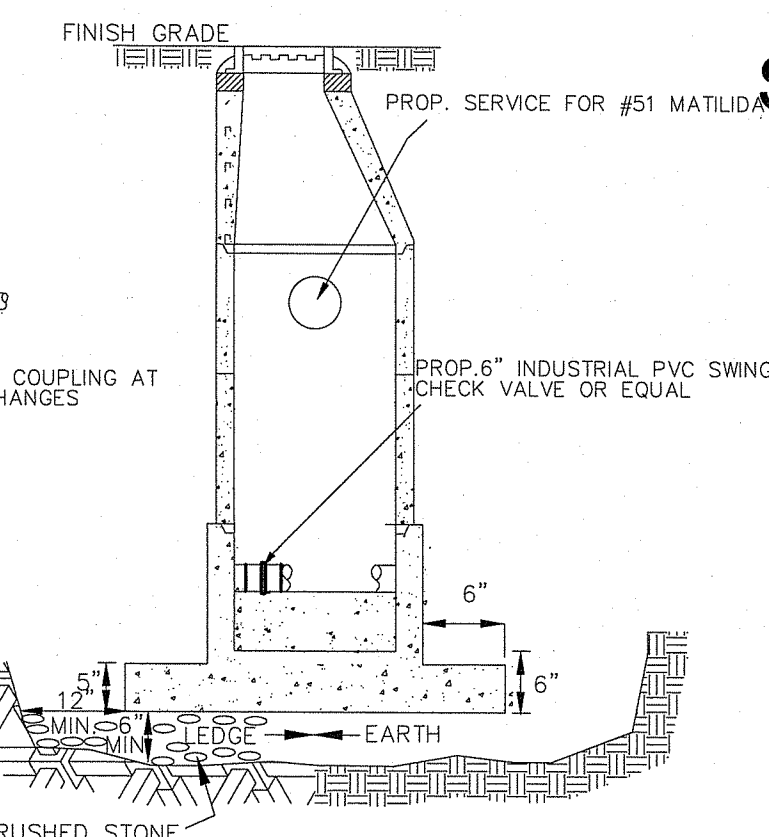
UTILITY PLAN FOR SEWER CONNECTION
47 MATILDA ST.
PROVIDENCE, RI
ASS MAP 75 LOTS 297, 298
FOR
MATILDA PINES LLC
37 OGDEN ST.
PROVIDENCE, RI 02906

MARCH 9, 2022
REV. APRIL 27, 2022
REV. MAY 19, 2022
REV. AUGUST 3, 2022
REV. AUGUST 15, 2022
REV. AUGUST 23, 2022
REV. SEPTEMBER 16, 2022
REV. OCTOBER 19, 2022
REV. NOVEMBER 23, 2022
SHEET 3 OF 6

PROVIDE CAST IRON COVER IN ACCORDANCE WITH CITY OF PROVIDENCE SPECIFICATIONS



TYPICAL PRECAST DROP INLET CONCRETE SEWER MANHOLE 2
NOT TO SCALE



SECTION A CONCRETE SEWER MANHOLE 2
NOT TO SCALE

ATTENTION BUILDING OWNER:

Your building has been protected against municipal sewer backups with a

(manufacturer and model number)
BACKWATER VALVE

General location:

- Where sewer enters the building (usually at front of building and next to foundation wall) or just outside the foundation.

Maintenance:

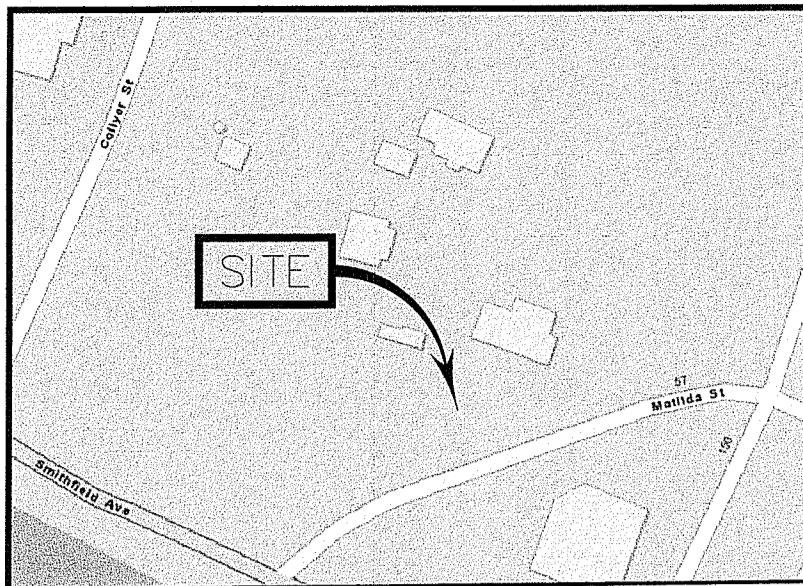
- Backwater valves are mechanical devices (Periodic inspection and cleaning is recommended)

BACKWATER MAINTENANCE DETAIL



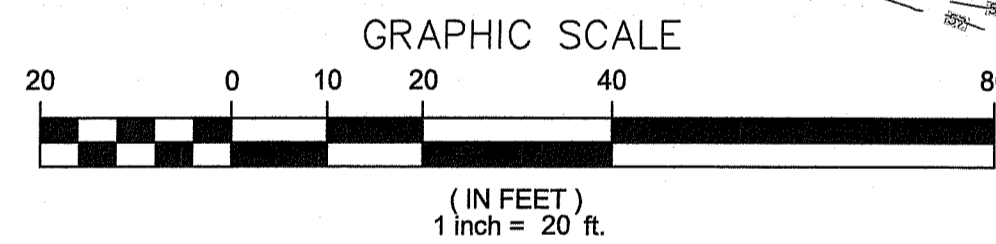
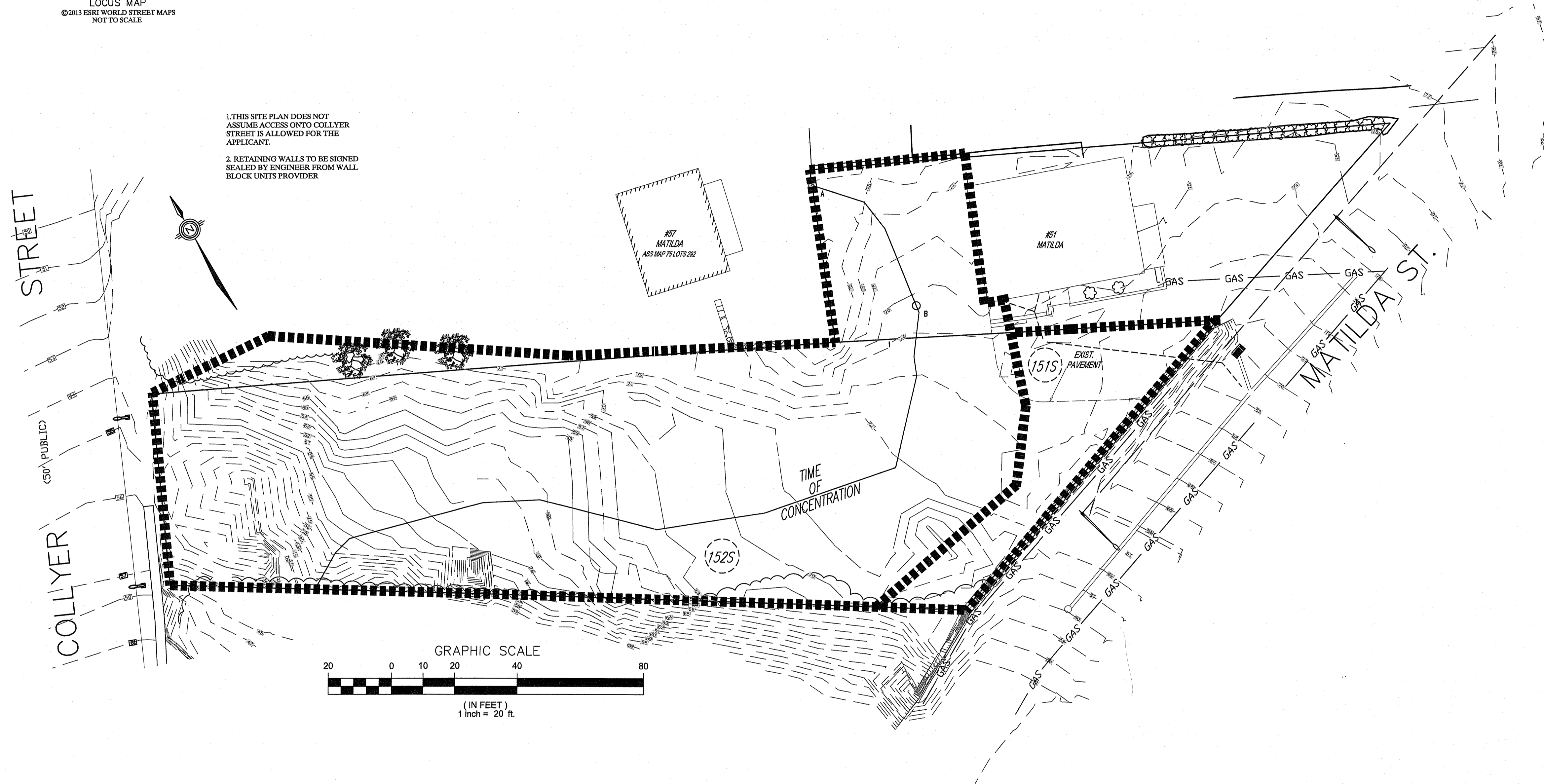
THE STATE OF RHODE ISLAND REQUIRES NOTIFICATION BY EXCAVATORS, DESIGNERS, OR ANY PERSON PREPARING TO DISTURB THE EARTH'S SURFACE ANYWHERE IN THE STATE.

PREPARED BY:
Anthony A. Esposito
Professional Engineer
12666 KENWOOD LN.
Unit C
FT. MYERS, FL 33907
508-369-4783
ltespo12@yahoo.com



LOCUS MAP
© 2013 ESRI WORLD STREET MAPS
NOT TO SCALE

1. THIS SITE PLAN DOES NOT ASSUME ACCESS ONTO COLLYER STREET IS ALLOWED FOR THE APPLICANT.
2. RETAINING WALLS TO BE SIGNED SEALED BY ENGINEER FROM WALL BLOCK UNITS PROVIDER



RI Environmental Management
DEC 2 2022
Office of Water Resources

ANTHONY A. ESPOSITO
No. 8925
REGISTERED PROFESSIONAL ENGINEER CIVIL
Anthony A. Esposito

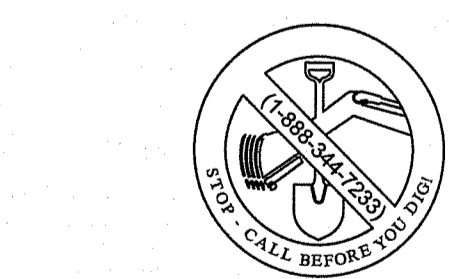
RI DEPARTMENT OF ENVIRONMENTAL MANAGEMENT
OFFICE OF WATER RESOURCES
FRESHWATER WETLANDS PROGRAM
APPROVED WITH CONDITIONS AS SPECIFIED IN THE LETTER OF APPROVAL
DATED: DEC 09 2022 FILE #: 22-0232
NO CHANGES ALLOWED WITHOUT PRIOR APPROVAL
APPROVED PLANS MUST BE AT CONSTRUCTION SITE

Nancy L. Freeman

PRE-DEVELOPMENT DRAINAGE PLAN FOR 47 MATILDA ST. PROVIDENCE, RI ASS MAP 75 LOTS 297, 298

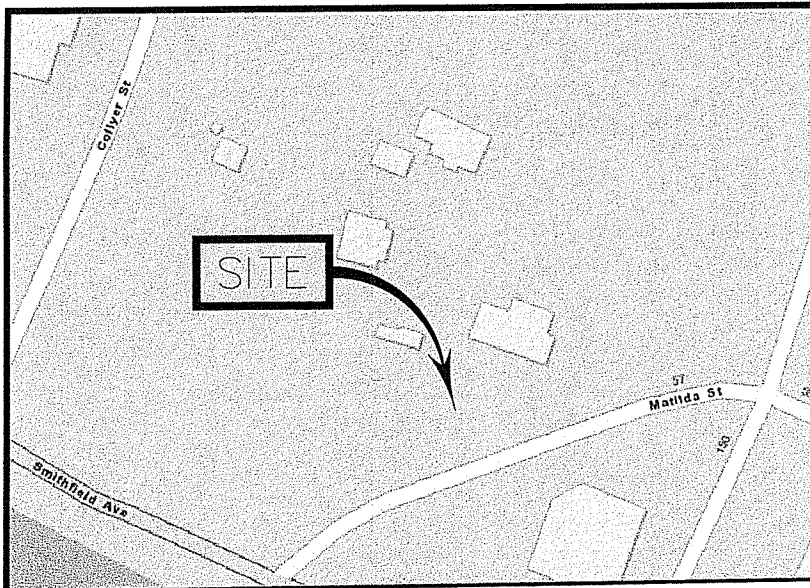
FOR MATILDA PINES LLC 37 OGDEN ST. PROVIDENCE, RI 02906

MARCH 22, 2022
REV. MAY 19, 2022
ADDED OCTOBER 19, 2022
REV. NOVEMBER 23, 2022
SHEET 5 OF 6



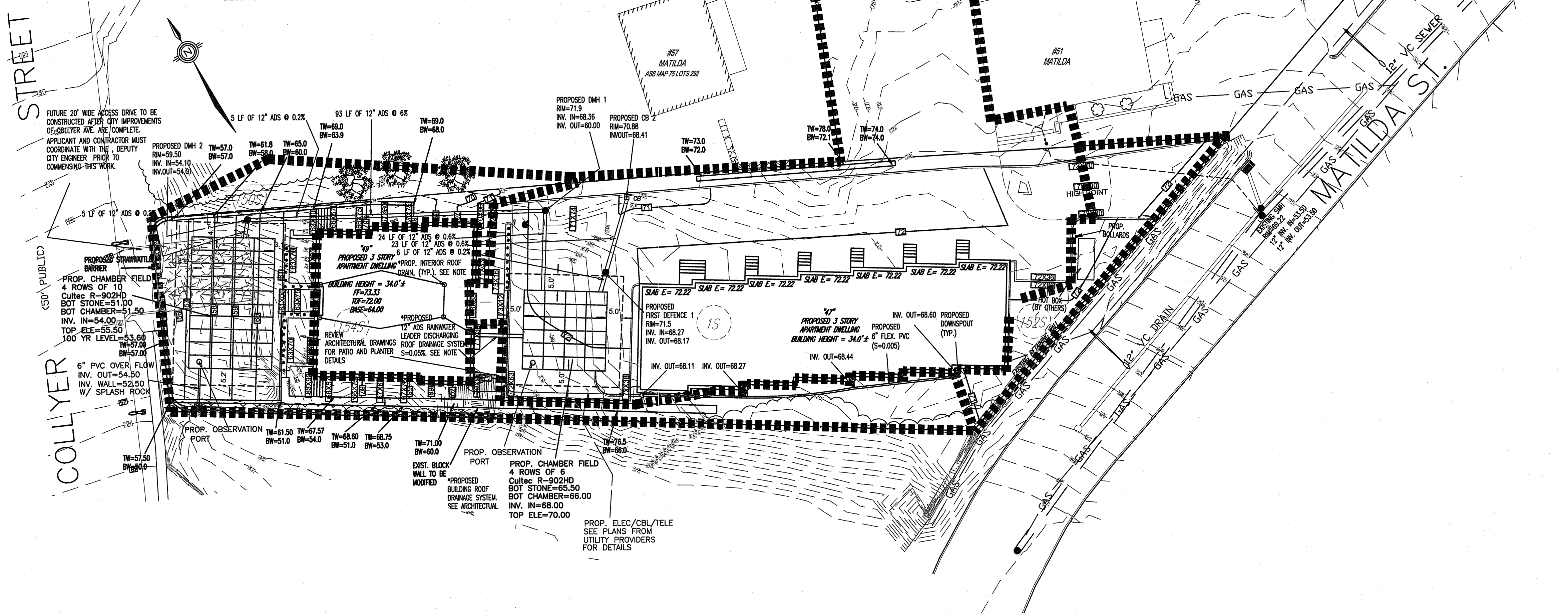
THE STATE OF RHODE ISLAND REQUIRES NOTIFICATION BY EXCAVATORS, DESIGNERS, OR ANY PERSON PREPARING TO DISTURB THE EARTH'S SURFACE ANYWHERE IN THE STATE.

PREPARED BY:
Anthony A. Esposito
Professional Engineer
12666 KENWOOD LN.
Unit C
FT. MYERS, FL 33907
508-369-4783
ltespo12@yahoo.com



LOCUS MAP
© 2013 ESRI WORLD STREET MAPS
NOT TO SCALE

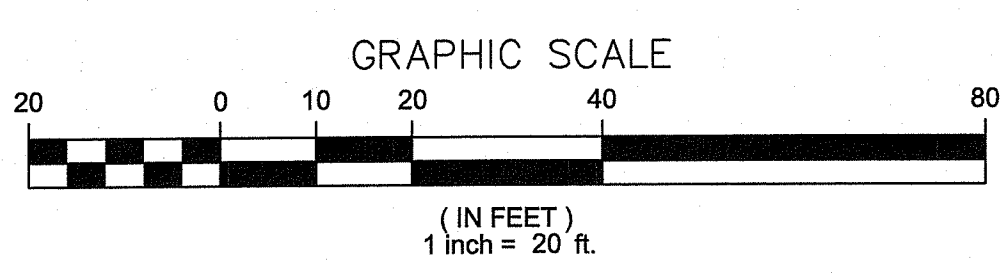
1. THIS SITE PLAN DOES NOT ASSUME ACCESS ONTO COLLYER STREET IS ALLOWED FOR THE APPLICANT.
2. RETAINING WALLS TO BE SIGNED SEALED BY ENGINEER FROM WALL BLOCK UNITS PROVIDER.



ANTHONY A. ESPOSITO
No. 8925
REGISTERED PROFESSIONAL ENGINEER CIVIL
Anthony A. Esposito

RI Environmental Management
DEC 2 2022
Office of Water Resources

RI DEPARTMENT OF ENVIRONMENTAL MANAGEMENT
OFFICE OF WATER RESOURCES
FRESHWATER WETLANDS PROGRAM
APPROVED WITH CONDITIONS AS SPECIFIED IN THE LETTER OF APPROVAL
DATED: DEC 09 2022 FILE #: 22-0232
NO CHANGES ALLOWED WITHOUT PRIOR APPROVAL
APPROVED PLANS MUST BE AT CONSTRUCTION SITE
Nancy L. Freeman

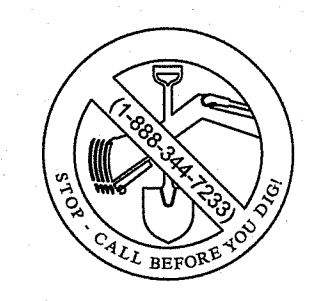


POST-DEVELOPMENT DRAINAGE PLAN FOR 47 MATILDA ST. PROVIDENCE, RI ASS MAP 75 LOTS 297, 298

FOR MATILDA PINES LLC
37 OGDEN ST.
PROVIDENCE, RI 02906
MARCH 22, 2022

REV. MAY 19, 2022
ADDED OCTOBER 19, 2022
REV. NOVEMBER 23, 2022
SHEET 6 OF 6

PREPARED BY:
Anthony A. Esposito
Professional Engineer
12666 KENWOOD LN.
Unit C
FT. MYERS, FL 33907
508-369-4783
itespo12@yahoo.com



THE STATE OF RHODE ISLAND REQUIRES NOTIFICATION BY EXCAVATORS, DESIGNERS, OR ANY PERSON PREPARING TO DISTURB THE EARTH'S SURFACE ANYWHERE IN THE STATE.