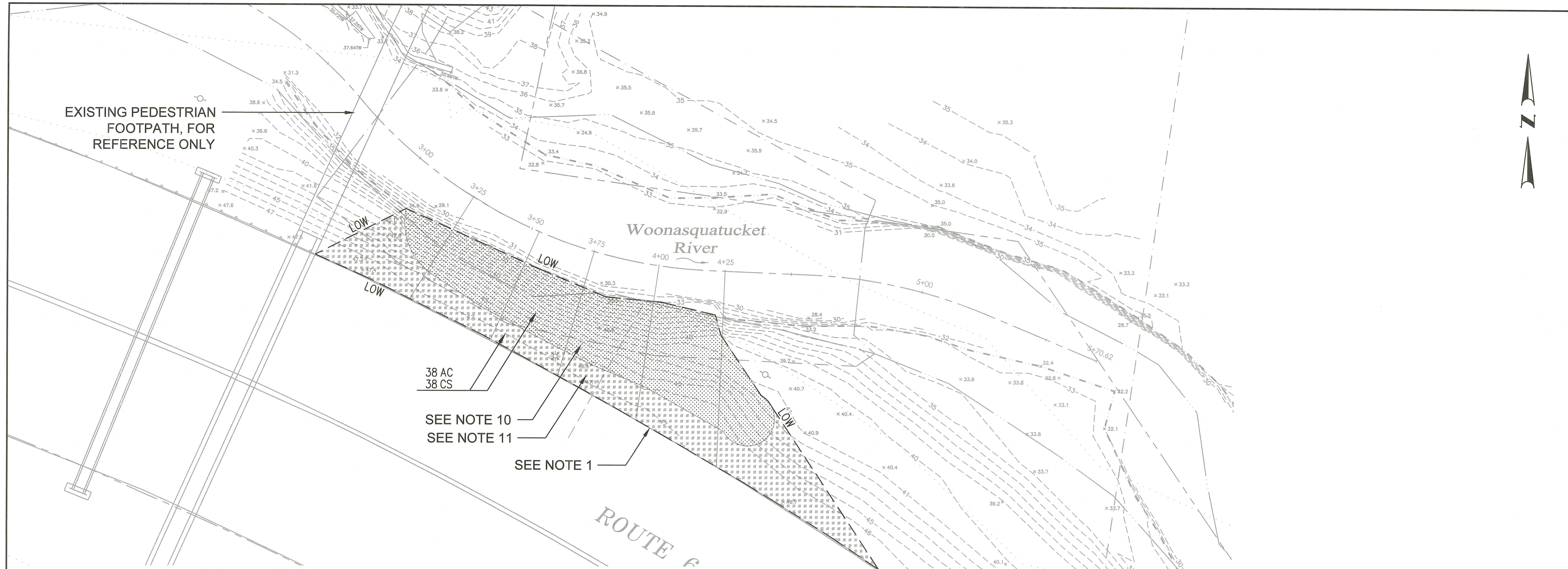


FED. ROAD DIV. NO.	STATE	PROJECT NO.	FISCAL YEAR	SHEET NO.	TOTAL SHEETS
	RI	2016-CD-005			

LEGEND	
	TUBELING PLUGS IN COIR 700 MATTING
	TUBELING PLUGS IN RIPRAP

- NOTES**
- CONTRACTOR WILL BE RESPONSIBLE FOR INVASIVE PLANT CONTROL/MANAGEMENT WITHIN PROJECT LIMITS.
 - CONTRACTOR SHALL BEGIN MAINTENANCE IMMEDIATELY AFTER PLANTING AND WILL CONTINUE UNTIL FINAL WRITTEN ACCEPTANCE OF PLANT INSTALLATION.
 - THE LANDSCAPE CONTRACTOR SHALL SUPPLY ALL PLANT MATERIALS IN QUANTITIES SUFFICIENT TO COMPLETE ALL PLANTINGS SHOWN ON THIS DRAWING.
 - ALL MATERIALS SHALL CONFORM TO THE GUIDELINES ESTABLISHED BY THE AMERICAN NURSERY AND LANDSCAPE ASSOCIATION.
 - ALL PLANTS SHALL BEAR THE SAME RELATIONSHIP TO FINISH GRADE AS TO ORIGINAL GRADES BEFORE DIGGING.
 - PLANTABLE SOIL SHALL BE PER SUBSECTION L01.03.2 OF RIDOT BLUE BOOK.
 - THE LANDSCAPE CONTRACTOR SHALL GUARANTEE ALL PLANT MATERIALS FOR ONE (1) FULL YEAR FROM DATE OF ACCEPTANCE.
 - ALL PLANT MATERIALS ARE SUBJECT TO THE APPROVAL OF THE LANDSCAPE ARCHITECT, AT THE NURSERY, AND AT THE SITE.
 - HYDRO-SEED ALL DISTURBED AREAS WITHIN LIMIT OF WORK WITH RI STATE SLOPE SEED MIX. WORK THE TOP 6" OF EXISTING SOIL TO BE LOOSE PRIOR TO HYDROSEED APPLICATION AND HAND RAKE LEVEL. STABILIZE WITH COIR 700 MATTING AND ROLL THE ENTIRE AREA INTENDED FOR HYDROSEEDING. BLEND THE FINISH GRADE OF PROPOSED HYDROSEEDING INTO ADJACENT AREAS AT TRANSITIONS WHERE APPLICABLE.
 - TUBELING PLUGS IN RIPRAP. REFER TO PLANTING SCHEDULE FOR SPECIES. SPECIES TO BE PLANTED RANDOMLY. REFER TO DETAILS FOR INSTALLATION.
 - TUBELING PLUGS IN COIR 700 MATTING. REFER TO PLANTING SCHEDULE FOR SPECIES. SPECIES TO BE PLANTED RANDOMLY. REFER TO DETAILS FOR INSTALLATION.
 - PLANTABLE SOIL WAS NOT IMPLEMENTED BETWEEN COURSES OF RIPRAP DURING CONSTRUCTION OF THE EMERGENCY REPAIRS; THEREFORE, THE SUBSTRATE MAY NOT BE ADEQUATE TO SUPPORT VEGETATIVE REESTABLISHMENT. AFTER PERFORMING TOPDRESSING WORK AS DESCRIBED IN NOTE #4 IN "SITE PREPARATION FOR PLANTING NOTES" ON LANDSCAPE DETAILS SHEET, TOPDRESSING WITH PLANTABLE SOIL MAY INCREASE POTENTIAL GROWTH, BUT MAY BE SUSCEPTIBLE TO WASH-OUT AND IS UNLIKELY TO REACH IDEAL ROOTING DEPTHS WITHIN THE RIPRAP/GRAVEL MATRIX. SUPPLEMENTAL SEEDING AND PLANTING IS AN ATTEMPT TO INCREASE RESILIENCY OF THE SLOPE BUT IT IS EXPECTED TO HAVE A LOW SUCCESS RATE.



PLANTING SCHEDULE

QTY	ID	BOTANICAL NAME	COMMON NAME	SIZE	CONDITION	SPACING
		TUBELING PLUGS				
38	AC	AMELANCHIER CANADENSIS	EASTERN SHADBUSH	8-24" HT.	TUBELING	3' O.C. MIN. 5' O.C. MAX.
38	CS	CORNUS SERICEA	RED OSIER DOGWOOD	8-24" HT.	TUBELING	3' O.C. MIN. 5' O.C. MAX.

INVASIVE SPECIES CONTROL/MANAGEMENT PLAN NOTES: *X Per RIDEM, see Condition Nos. 15, 16, & 17 of the Permit Letter*

GENERAL NOTE: CONTRACTOR WILL BE RESPONSIBLE FOR INVASIVE PLANT CONTROL/MANAGEMENT WITHIN PROJECT LIMITS. INVASIVES LISTED BELOW WERE LOCATED DURING THE PRELIMINARY SITE ASSESSMENT AND MAY INCLUDE BUT NOT BE LIMITED TO:

- SPOTTED KNAWEED (CENTAUREA STOEBE),
- ORIENTAL BITTERSWEET CELASTRUS ORBICULATUS),
- GARLIC MUSTARD (ALLIARIA PETIOLATA),
- JAPANESE KNOTWEED (POLYGONUM CUSPIDATUM OR FALLOPIA JAPONICA),
- NORWAY MAPLE (ACER PLATANOIDES),
- TREE OF HEAVEN (AILANTHUS ALTISSIMA),
- BURNING BUSH (EUONYMUS ALATUS),
- AUTUMN OLIVE (ELAEAGNUS UMBELLATA),
- GLOSSY BUCKTHORN (RHAMNUS FRANGULA),
- HONEYSUCKLE (LONICERA SPP.),
- COLTS FOOT (TUSSILAGO FARFARA),
- MONEYWORT (LYSIMACHIA NUMMULARIA).

REMOVE THE ENTIRE ROOT. BEFORE THE SEED-SET. CONTINUOUS MOWING AS CLOSE TO THE GROUND AS POSSIBLE MAY SUPPRESS POPULATIONS.
CHEMICAL: FOLIAR SPRAY OF GLYPHOSATE, CLOPYRALID OR AMINOPYRALID AND A NON-IONIC SURFACTANT DURING BOLTING OR FLOWER BUD STAGE.
BIOLOGICAL: THERE ARE CURRENTLY 13 BIOLOGICAL CONTROL AGENTS. SUCCESSFUL TREATMENT REQUIRES ONE SEED HEAD AND ONE ROOT MINING AGENT.

ORIENTAL BITTERSWEET CELASTRUS ORBICULATUS).
MECHANICAL: DIG OUT OR HAND-PULL SEEDLINGS. CUT THE BASE OF THE VINES STRANGLING TREES, LEAVING UPPER FOLIAGE TO DIE BACK.
CHEMICAL: BASAL BARK WITH TRICLOPYR ESTER PLUS A SURFACTANT. CUT STEM TREATMENT WITH GLYPHOSATE OR TRICLOPYR AMINE.
FOLIAR SPRAY WITH TRICLOPYR ESTER OR TRICLOPYR AMINE PLUS A NON-IONIC SURFACTANT.

GARLIC MUSTARD (ALLIARIA PETIOLATA)
MECHANICAL: HAND PULLS IN EARLY SPRING BEFORE SEED SET. IF PLANTS ARE FLOWERING, PLACE THEM IN PLASTIC BAGS FOR TRASH DISPOSAL OR BURN. CUT PLANTS AT THEIR BASE JUST AFTER THE FLOWER STALKS HAVE ELONGATED BUT BEFORE ANY FLOWERS HAVE OPENED; THEY MAY HAVE TO CUT MORE THAN ONCE DURING A GROWING SEASON. PLACE PULLED/CUT PLANTS IN PLASTIC BAGS FOR TRASH DISPOSAL. USE CONTROLLED BURNS IN THE FALL OR EARLY SPRING.
CHEMICAL: FOLIAR APPLICATIONS OF GLYPHOSATE IN EARLY SPRING OR LATE FALL WHEN NATIVE PLANTS ARE DORMANT.

JAPANESE KNOTWEED (POLYGONUM CUSPIDATUM OR FALLOPIA JAPONICA).
MECHANICAL: HAND-PULL YOUNG PLANTS; DIG OR TILL WHEN SOIL IS SOFT. PLANTS SHOULD BE PULLED UP BY THE ROOT CROWN, TRYING TO REMOVE AS MUCH OF THE RHIZOMES AS POSSIBLE BECAUSE ANY RHIZOMES REMAINING IN THE SOIL WILL PRODUCE NEW PLANTS AT EACH NODE. IT IS POSSIBLE TO ERADICATE SMALL PATCHES OF KNOTWEED WITH THE REPEATED AND PERSISTENT CUTTING OF THE PLANTS. PROPERLY DISPOSE OF PLANT DEBRIS; FRAGMENTS AS SMALL AS A COUPLE OF INCHES CAN RESPROUT, PRODUCING NEW INFESTATIONS.
CHEMICAL: PLANTS ARE MORE SUSCEPTIBLE TO HERBICIDES IF THEY ARE CUT WHEN 4-5' TALL AND THE REGROWTH TREATED AROUND 3' TALL. FOLIAR APPLICATION OF GLYPHOSATE WITH A SURFACTANT, TRICLOPYR FORMULATED FOR USE WITH WATER, DICAMBA, OR IMAZAPYR MAY BE EFFECTIVE ON LARGE POPULATIONS. TESTS INVOLVING LARGE-BORE NEEDLE INJECTION OF GLYPHOSATE INTO THE LOWER NODES OF EACH STEM HAVE BEEN SUCCESSFUL.

NORWAY MAPLE (ACER PLATANOIDES).
MECHANICAL: SEEDLINGS OF NORWAY MAPLE CAN BE PULLED FROM MOIST SOIL BEFORE

THEY GET TOO LARGE. OTHER TYPES OF MANUAL REMOVAL INCLUDE DIGGING OUT SAPLINGS AND ROOT SYSTEMS OR CUTTING DOWN LARGE TREES. GIRDLING THE TREES BY REMOVING THE BARK LAYER (INCLUDING THE CAMBIUM) CAN ALSO BE PERFORMED, BUT IS MOST EFFECTIVE IN THE SPRING. LEFTOVER STUMPS CAN BE GROUND OUT OR NEW GROWTH THAT DEVELOPS FROM OLD STUMPS CAN BE CUT IN FUTURE YEARS.
CHEMICAL: GLYPHOSATE OR TRICLOPYR MAY BE USEFUL FOR CONTROL - CUT-STUMP TREATMENT WITH TRICLOPYR OR GLYPHOSATE.

TREE OF HEAVEN (AILANTHUS ALTISSIMA).
MECHANICAL: SEEDLINGS CAN BE REMOVED BY HAND. TREES MAY BE CUT AT GROUND LEVEL WITH A SAW, MOST EFFECTIVE WHEN THE TREE HAS BEGUN TO FLOWER.
RE-SPROUTS MAY OCCUR AFTER TREATMENT AND SUCCESSFUL CONTROL WILL REQUIRE REPEATED CUTTING.
CHEMICAL: FOLIAR SPRAY WITH EITHER GLYPHOSATE OR TRICLOPYR ESTER FROM JUNE-SEPTEMBER. BASAL BARK WITH TRICLOPYR ESTER DURING THE SUMMER--CUT-STUMP TREATMENT WITH TRICLOPYR OR GLYPHOSATE.

BURNING BUSH (EUONYMUS ALATUS).
MECHANICAL: HAND-PULL SEEDLINGS. USE A SPADING FORK OR WEED WRENCH TO REMOVE LARGER PLANTS AND THEIR ROOT SYSTEMS.
LARGER PLANTS CAN BE CUT, BUT THE STUMP MUST BE GROUND OUT OR REGROWTH FREQUENTLY MONITORED AND CLIPPED.
THIS SPECIES CAN RE-SPROUT AFTER CUTTING AND TOP-KILL HERBICIDES.
CHEMICAL: CUT STUMPS CAN BE PAINTED WITH HERBICIDE.
IF POPULATIONS ARE TOO LARGE FOR CUTTING TO BE PRACTICAL, A FOLIAR GLYPHOSATE SPRAY CAN BE APPLIED IN THE EARLY SUMMER MONTHS.
NOTE THAT THIS SPECIES CAN RE-SPROUT AFTER CUTTING AND TOP-KILL HERBICIDES.

AUTUMN OLIVE (ELAEAGNUS UMBELLATA).
MECHANICAL: PULL SEEDLINGS. CUTTING, MOWING, AND BURNING ARE NOT RECOMMENDED BECAUSE PLANTS WILL RESPROUT UNLESS FOLLOWED UP WITH CHEMICAL CONTROL.
CHEMICAL: TREAT FOLIAGE, CUT SURFACE, OR GIRDLING STEMS WITH GLYPHOSATE, TRICLOPYR ESTER, OR METSULFURON-METHYL WITH A SURFACTANT. BASAL BARK APPLICATION OF TRICLOPYR ESTER CAN ALSO BE PRACTICAL. TREAT FOLIAGE WITH A LIQUID SPRAY DURING THE ACTIVE GROWING SEASON. FOR CUT STUMP OR GIRDLING BARK TREATMENT, USE LIQUID HERBICIDE BY PAINTING, DRIPPING, OR SPONGING ONTO A SURFACE.

GLOSSY BUCKTHORN (RHAMNUS FRANGULA).
MECHANICAL: PRESCRIBED FIRE KILLS SEEDLINGS. SMALL PLANTS MAY BE HAND-PULLED. LARGER PLANTS CAN BE DUG OR PULLED USING A LEVERAGE TOOL SUCH AS A WEED WRENCH. EFFECTIVE GIRDLING OF TREES REQUIRES STRIPPING THE BARK TO EXPOSE THE

HARDWOOD AT A MINIMUM LENGTH OF SIX TO TEN INCHES. THIS MAY NEED TO BE REPEATED. RESTORATION OF FLOODING OR HIGH WATER TABLES IN AREAS WHERE WATER TABLES WERE ARTIFICIALLY LOWERED MAY ELIMINATE GLOSSY BUCKTHORN.
CHEMICAL: CUT-STUMP TREATMENT WITH GLYPHOSATE IN LATE FALL; CUT-STUMP OR BASAL BARK SPRAY TREATMENT AROUND THE STEM WITH TRICLOPYR ESTER IN LATE FALL THROUGH THE WINTER.

HONEYSUCKLE (LONICERA SPP.).
MECHANICAL: MANUAL REMOVAL OF PLANTS CAN BE CHALLENGING FOR LARGE POPULATIONS; INITIAL INFESTATIONS MAY BE CONTROLLED BY HAND PULLING. RESIDUAL ROOTS LEFT IN THE SOIL MAY RESPROUT. ALL OF THE UNDERGROUND PORTIONS OF THE PLANT MUST BE REMOVED. PULLING WHEN THE GROUND IS MOIST MAY MAKE IT EASIER TO REMOVE THE ENTIRE PLANT. PULL BEFORE THE PLANT HAS SET-SEED TO REDUCE FURTHER SPREAD.
CHEMICAL: THIS SPECIES RESISTS MANY MORE COMMONLY USED AND SELECTIVE HERBICIDES (E.G., 2,4-D, DICAMBA, MCPA, 2-4DB). ONE STUDY IN ENGLAND FOUND A MIXTURE OF 2-(2,4,5-TRICHLORO PHENOXY) PROPIONIC ACID (SILVEX) AND MCPA (2-METHYL-4-CHLOROPHOENOXYACETIC ACID) GAVE 90% CONTROL IN A WHEAT CROP. A 2% SOLUTION OF GLYPHOSATE OR TRICLOPYR AND WATER PLUS A NON-IONIC SURFACTANT USING A TANK OR BACKPACK SPRAYER TO COVER ALL LEAVES THOROUGHLY. TREATMENTS SHOULD BE DONE IN THE SUMMER WHEN COLTSFOOT LEAVES ARE FULLY DEVELOPED.

COLTS FOOT (TUSSILAGO FARFARA).
MECHANICAL: MANUAL REMOVAL OF PLANTS CAN BE CHALLENGING FOR LARGE POPULATIONS; INITIAL INFESTATIONS MAY BE CONTROLLED BY HAND PULLING. RESIDUAL ROOTS LEFT IN THE SOIL MAY RESPROUT. ALL OF THE UNDERGROUND PORTIONS OF THE PLANT MUST BE REMOVED. PULLING WHEN THE GROUND IS MOIST MAY MAKE IT EASIER TO REMOVE THE ENTIRE PLANT. PULL BEFORE THE PLANT HAS SET-SEED TO REDUCE FURTHER SPREAD.
CHEMICAL: THIS SPECIES RESISTS MANY MORE COMMONLY USED AND SELECTIVE HERBICIDES (E.G., 2,4-D, DICAMBA, MCPA, 2-4DB). ONE STUDY IN ENGLAND FOUND A MIXTURE OF 2-(2,4,5-TRICHLORO PHENOXY) PROPIONIC ACID (SILVEX) AND MCPA (2-METHYL-4-CHLOROPHOENOXYACETIC ACID) GAVE 90% CONTROL IN A WHEAT CROP. A 2% SOLUTION OF GLYPHOSATE OR TRICLOPYR AND WATER PLUS A NON-IONIC SURFACTANT USING A TANK OR BACKPACK SPRAYER TO COVER ALL LEAVES THOROUGHLY. TREATMENTS SHOULD BE DONE IN THE SUMMER WHEN COLTSFOOT LEAVES ARE FULLY DEVELOPED.

MONEYWORT (LYSIMACHIA NUMMULARIA).
MECHANICAL: FOR SMALL INFESTATIONS, PLANTS MAY BE PULLED OR DUG. MAKE SURE TO REMOVE ALL STEMS, STEM FRAGMENTS AND ROOTS TO PREVENT THE STEMS FROM ROOTING AGAIN IN THE SOIL. PROLONGED SUBMERGENCE IN WATER WILL KILL MONEYWORT. AT RESTORATION SITES, MONEYWORT CAN BE CONTROLLED BY ESTABLISHING NATIVE GRASSES TO SHADE IT OUT. IN FIRE-ADAPTED PLANT COMMUNITIES, CONTROLLED BURNS IN THE EARLY SPRING OR LATE FALL (WHEN NATIVE SPECIES ARE DORMANT) MAY BE HELPFUL.
CHEMICAL: SEVERAL HERBICIDES ARE EFFECTIVE IN CONTROLLING MONEYWORT; HOWEVER, BECAUSE MONEYWORT USUALLY GROWS IN OR NEAR WETLANDS, BE SURE THAT THE HERBICIDE IS AQUATICALLY-APPROVED. RODEO IS ONE SUCH HERBICIDE PRODUCT THAT MAY BE EFFECTIVE.

RI DEPARTMENT OF ENVIRONMENTAL MANAGEMENT
OFFICE OF WATER RESOURCES
FRESHWATER WETLANDS PROGRAM
APPROVED WITH CONDITIONS AS
SPECIFIED IN THE LETTER OF APPROVAL
DATED: OCT 02 2024 FILE #: 23-0152
NO CHANGES ALLOWED WITHOUT PRIOR APPROVAL
APPROVED PLANS MUST BE AT CONSTRUCTION SITE

Nancy L. Freeman

RI Environmental Management
Office of Water Resources
AUG 30 2024

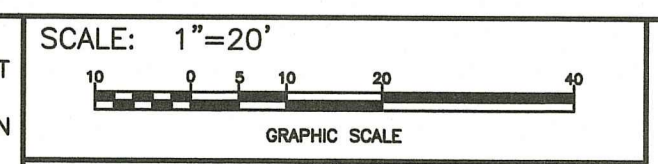


Stantec
67 CEDAR STREET
PROVIDENCE, RI 02903



RHODE ISLAND
DEPARTMENT OF TRANSPORTATION

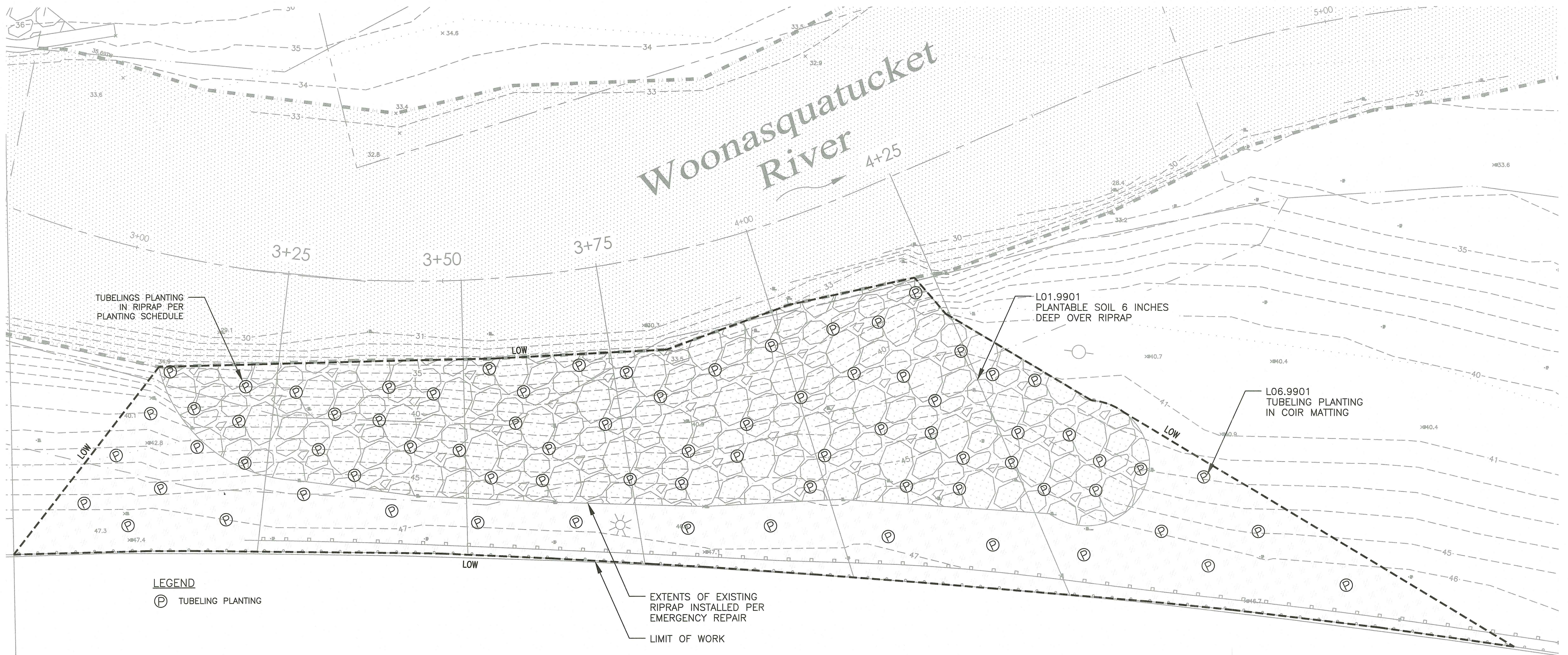
DESIGNED BY:	ST
CHECKED BY:	BN
DATE:	08/01/2024
SHEET:	1
OF:	2



REVISIONS		REVISIONS	
NO.	DATE	NO.	DATE

ROUTE 6 ROADSIDE SLOPE STABILIZATION
PROVIDENCE
RHODE ISLAND

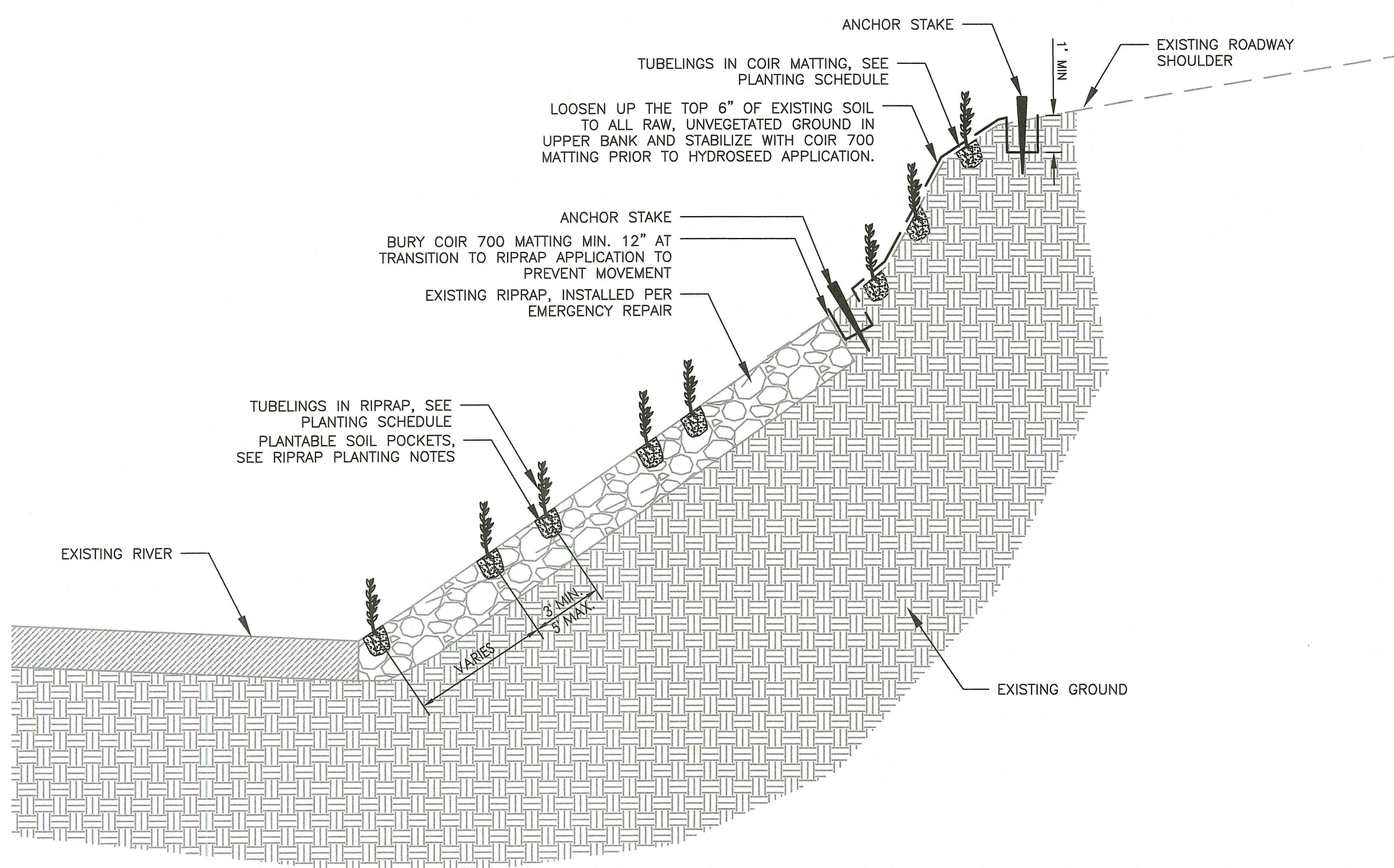
PLANTING PLAN



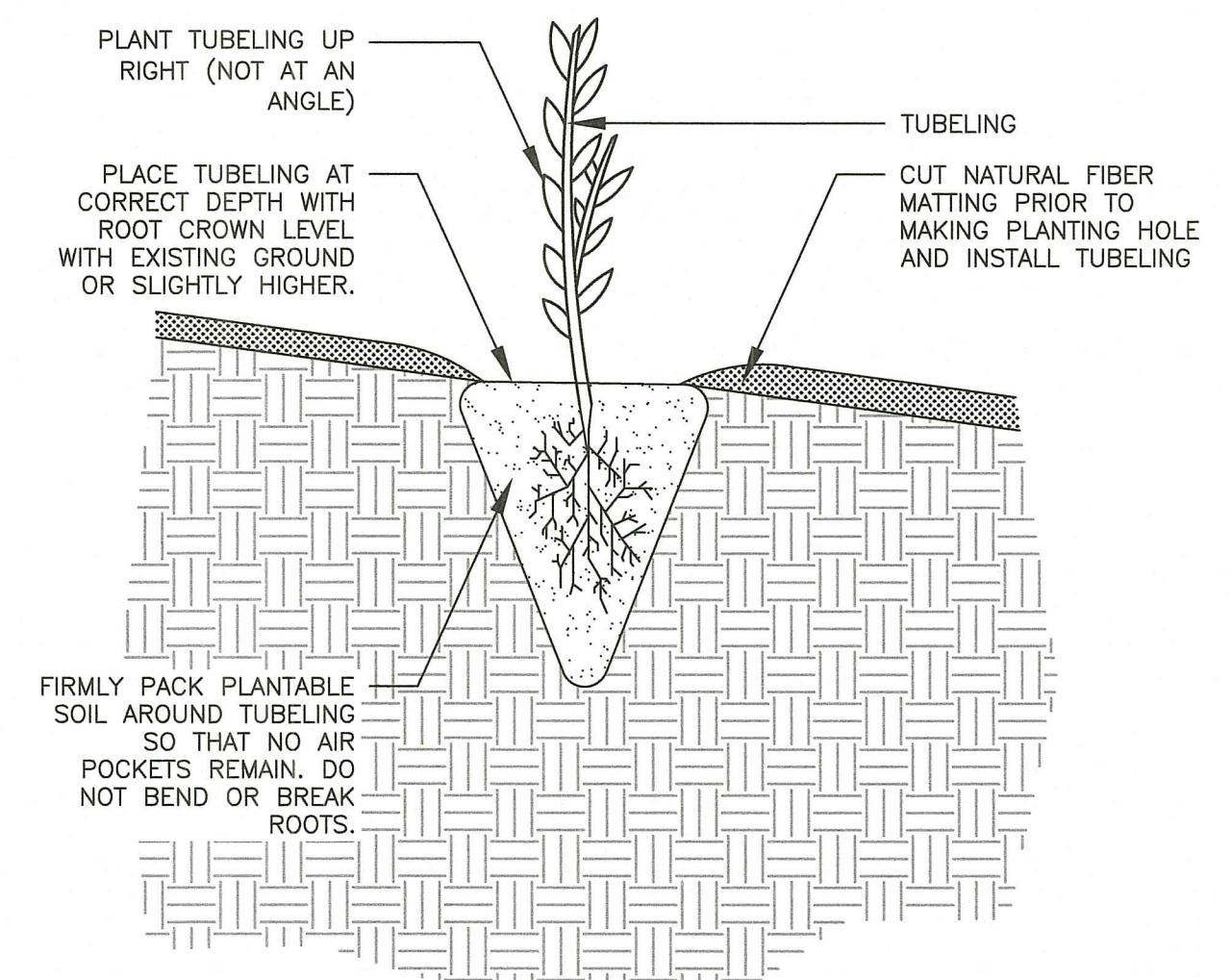
TUBELING ENLARGEMENT PLAN
SCALE: 1" = 10'-0"

- SITE PREPARATION FOR PLANTING NOTES:**
1. LOCATE STAGING AREAS OUTSIDE OF WORK AREAS TO THE EXTENT FEASIBLE.
 2. PLANTING SHOULD BE DONE DURING PERIODS WITHIN THE PLANTING SEASON WHEN WEATHER AND SOIL CONDITIONS ARE SUITABLE AND IN ACCORDANCE WITH ACCEPTED PRACTICES. PLANTS SHALL NOT BE INSTALLED IN FROZEN OR HIGH FLOW CONDITIONS.
 3. PLANTS SHALL NOT REMAIN ON-SITE AND UNPLANTED FOR LONGER THAN A THREE-DAY PERIOD AFTER DELIVERY.
 4. TOP DRESS RIPRAP ON SLOPE WITH FINER GRADATIONS OF GRAVEL AND SAND TO FILL IN VOID SPACE, TO PREVENT PIPING, AND TO AVOID UNDERMINING. "SHAKING IN" A MIX OF NO. 57 STONE AND 20% SAND TO ACCOMPLISH VOID FILLING. A SECOND APPLICATION MAY BE ADVISABLE AFTER THE MATERIAL "WASHES IN" FROM PRECIPITATION AND/OR SETTLES. VISUAL INSPECTION AT A FUTURE TIME SHOULD DICTATE NEED.
 5. RIPRAP AREA TO BE TOP DRESSED WITH PLANTABLE SOIL PER SUBSECTION L01.03.2 OF RIDOT BLUEBOOK, TO FILL IN VOIDS BETWEEN RIPRAP STONE.
 6. PLACE PERMEABLE FABRIC LAYER OR NON-PLASTIC EROSION CONTROL MATTING, AS NEEDED, TO STABILIZE SLOPE DURING WORK (SUBSIDIARY TO PLANTINGS).
 7. MINIMIZE TRAVEL ACROSS, AND SUBSEQUENT COMPACTION OF, SOILS.
 8. INSTALL PLANTINGS TO FINISHED GRADE PER NOTES FOR PLANTING IN SLOPE OR RIPRAP.
 9. WATER BY SATURATING TWICE IN FIRST TWO HOURS AFTER PLANTING.
 10. RAISE AND REPLANT ANY PLANTS THAT SETTLE MORE THAN 1" AFTER PLANTING AND WATERING.

- TUBELING PLANTING IN RIPRAP:**
1. INSPECT PLANTS TO ENSURE THEY ARE IN GOOD CONDITION PRIOR TO PLANTING.
 2. INSTALL MATERIALS THE SAME DAY THEY ARE PREPARED FOR PLANTING.
 3. PLANTS SHOULD HAVE BEEN PROPAGATED FOR A SUFFICIENT TIME AS TO DEVELOP ROOTS SUFFICIENT TO HOLD SOIL.
 4. PLANTS SHOULD BE BETWEEN 8-24" IN HEIGHT AT TIME OF PLANTING.
 5. LOCATE NATURALLY OCCURRING PLANTING POCKETS IN RIPRAP. POCKETS SHOULD BE 6" DIAMETER MINIMUM, AND 9" DEEP MINIMUM.
 6. REMOVE PLANT FROM CONTAINER.
 7. CENTER PLANT IN HOLE, INSTALL PLANT TO SUFFICIENT DEPTH THAT ROOT CROWN IS COVERED.
 8. TUBELINGS TO BE PLANTED AT APPROXIMATELY 3' ON CENTER (MINIMUM 2' ON CENTER, MAXIMUM 5' ON CENTER), WITH RANDOM BUT DISTRIBUTED AS EVENLY AS PRACTICABLE.
 9. FIRMLY PACK THE TUBELING SO THAT NO AIR POCKETS REMAIN, DO NOT BEND OR BREAK ROOTS.



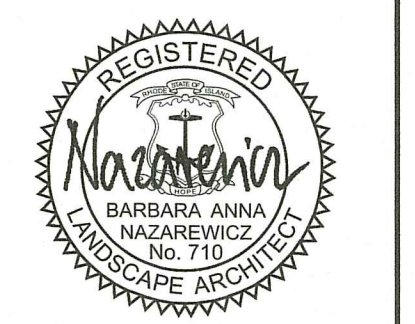
SLOPE STABILIZATION PLANTING DETAIL - TUBELING PLANTING IN RIPRAP
NOT TO SCALE



TUBELING PLANTING IN COIR MATTING DETAIL
SCALE: 1" = 1'-0"

RI DEPARTMENT OF ENVIRONMENTAL MANAGEMENT
OFFICE OF WATER RESOURCES
FRESHWATER WETLANDS PROGRAM
APPROVED WITH CONDITIONS AS SPECIFIED IN THE LETTER OF APPROVAL
DATED: **OCT 02 2024** FILE #: **23-crs2**
NO CHANGES ALLOWED WITHOUT PRIOR APPROVAL
APPROVED PLANS MUST BE AT CONSTRUCTION SITE
Nancy L. Freeman

RI Environmental Management
AUG 30 2024



DESIGNED BY: ST
CHECKED BY: BN
DATE: 08/01/2024
SHEET: 1
OF: 2

REVISIONS			REVISIONS		
NO.	DATE	BY	NO.	DATE	BY

SCALE: NOT TO SCALE
ROUTE 6 ROADSIDE SLOPE STABILIZATION
PROVIDENCE RHODE ISLAND
LANDSCAPE DETAILS