



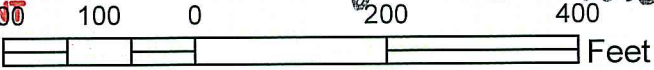
2023 AERIAL MAP
A.P. 23, Lot 3-15 | 28B Reuben Brown Lane
Exeter, Rhode Island

LEGEND

RI DEPARTMENT OF ENVIRONMENTAL MANAGEMENT
OFFICE OF WATER RESOURCES
PROPERTY LINE
FRESHWATER WETLANDS PROGRAM

APPROVED WITH CONDITIONS AS
SPECIFIED IN THE LETTER OF APPROVAL
DATED: DEC 12 2023 FILE #: 23-0189
NO CHANGES ALLOWED WITHOUT PRIOR APPROVAL
APPROVED PLANS MUST BE AT CONSTRUCTION SITE

Nancy L. Freeman



RI DEPARTMENT OF ENVIRONMENTAL MANAGEMENT
OFFICE OF WATER RESOURCES
FRESHWATER WETLANDS PROGRAM

NOTE PER DEM:

Kindly be advised that this Permit
is not equivalent to a
verification of the type or extent
of freshwater wetlands on site

- General Notes:
- 1. This map should not be interpreted as a survey quality graphic. AES recommends consultation with a Professional Land Surveyor for accurate site feature locations.
 - 2. Property lines as depicted on this map have been approximated from plat maps available from the town assessor's online database.
 - 3. Aerial photograph base map and other data layers acquired from the RI DEM and RIGIS database.

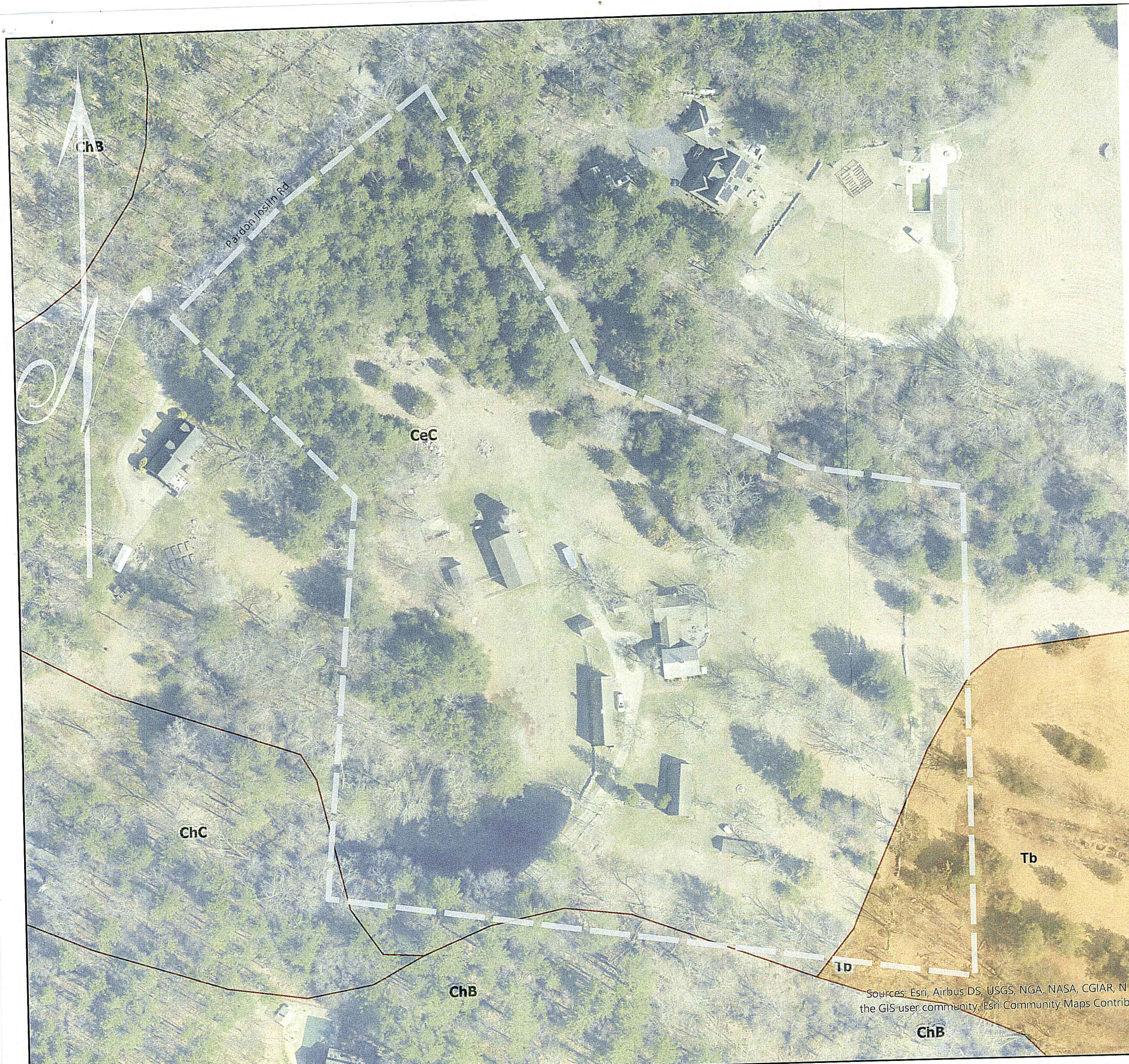
RI Environmental Management

SEP 26 2023

Office of Water Resources

Patrick J. Loveland

Map created by: Patrick J. Loveland, GIS Specialist 07/27/2023



USDA - NRCS SOIL SURVEY MAP
 A.P. 23, Lot 3-15 | 28B Reuben Brown Lane
 Exeter, Rhode Island

LEGEND

- CeC - Canton and Charlton fine sandy loams, 3 to 15 percent slopes, very rocky
- ChB - Canton and Charlton very stony fine sandy loams, 3 to 8 percent slopes
- ChC - Canton and Charlton fine sandy loams, 8 to 15 percent slopes, very stony
- Tb - Tisbury silt

RI DEPARTMENT OF ENVIRONMENTAL MANAGEMENT
 OFFICE OF WATER RESOURCES
 FRESHWATER WETLANDS PROGRAM

APPROVED WITH CONDITIONS AS
 SPECIFIED IN THE LETTER OF APPROVAL

DATED: DEC 12 2023 FILE #: 23-0189

100 50 0 100 200 300 Feet
 NO CHANGES ALLOWED WITHOUT PRIOR APPROVAL
 APPROVED PLANS MUST BE AT CONSTRUCTION SITE

Nancy L. Freeman

General Notes:

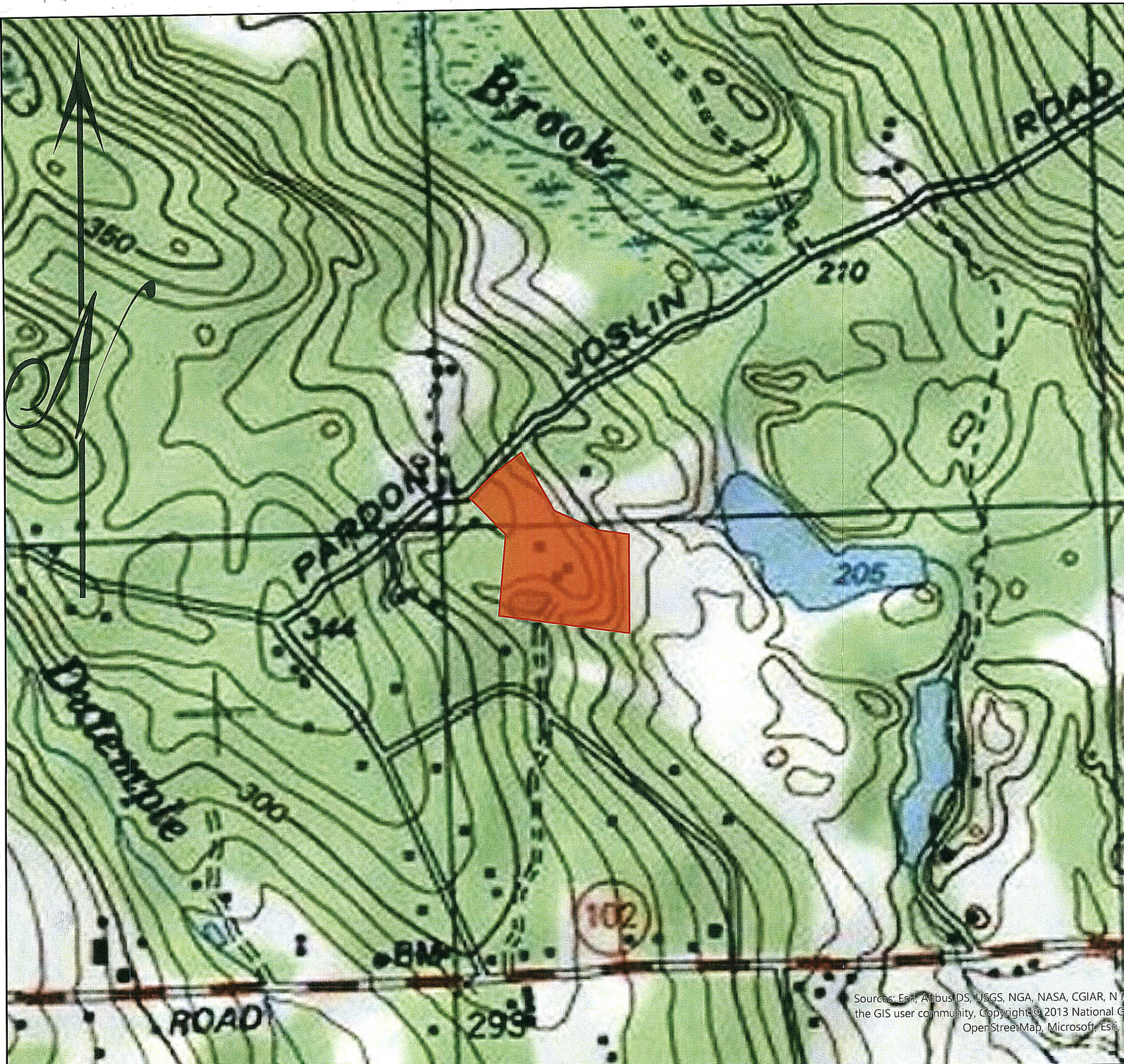
1. This map should not be interpreted as a survey quality graphic. It is designed for preliminary planning purposes only. AES recommends consultation with a Professional Land Surveyor for accurate site feature locations.
2. Property lines as depicted on this map have been approximated from plat maps available from the town assessor's online database.
3. Aerial photograph base map and other data layers acquired from the RI DEM and RIGIS database.

Sources: Esri, Airbus DS, USGS, NGA, NASA, CGIAR, NRC
 the GIS user community, Esri Community Maps Contributor

Map created by:

Patrick J. Loveland
 Patrick J. Loveland, GIS Specialist

RI Environmental Management
 SEP 26 2023
 Office of Water Resources
 07/27/2023



USGS TOPOGRAPHIC MAP
 A.P. 23, Lot 3-15 | 28B Reuben Brown Lane
 Exeter, Rhode Island

LEGEND

PROPERTY LINE
 RI DEPARTMENT OF ENVIRONMENTAL MANAGEMENT
 OFFICE OF WATER RESOURCES
 FRESHWATER WETLANDS PROGRAM
 APPROVED WITH CONDITIONS AS
 SPECIFIED IN THE LETTER OF APPROVAL
 DATED: DEC 12 2023 | FILE #: 23-0189

NO CHANGES ALLOWED WITHOUT PRIOR APPROVAL
 APPROVED PLANS MUST BE AT CONSTRUCTION SITE

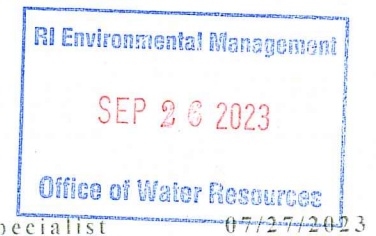
Nancy L. Freeman

- General Notes:
1. This map should not be interpreted as a survey quality graphic. It is designed for preliminary planning purposes only. AES recommends consultation with a Professional Land Surveyor for accurate site feature locations.
 2. Property lines as depicted on this map have been approximated from plat maps available from the town assessor's online database.
 3. Aerial photograph base map and other data layers acquired from the RI DEM and RIGIS database.

Sources: Esri, Airbus DS, USGS, NGA, NASA, CGIAR, NRC, the GIS user community, Copyright © 2013 National Geographic, OpenStreetMap, Microsoft, Esri, IBM

Map created by:

Patrick J. Loveland
 Patrick J. Loveland, GIS Specialist



AES PROPOSED POND MAINTENANCE PLAN
 A.P. 23, Lot 3-15 | 28B Reuben Brown Lane
 Exeter, Rhode Island

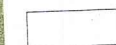
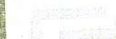








RI DEPARTMENT OF ENVIRONMENTAL MANAGEMENT
 OFFICE OF WATER RESOURCES
FRESHWATER WETLANDS PROGRAM

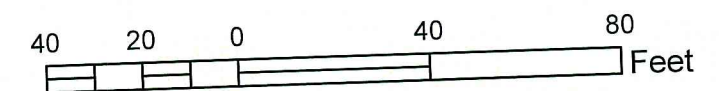
APPROVED WITH CONDITIONS AS
 SPECIFIED IN THE LETTER OF APPROVAL

DATED: DEC 12 2023 FILE #: 23-0189

NO CHANGES ALLOWED WITHOUT PRIOR APPROVAL
 APPROVED PLANS MUST BE AT CONSTRUCTION SITE

Nancy L. Freeman

- LEGEND**
-  TAX PARCELS (ZOOM IN TO VIEW)
 -  PROPERTY LINE
 -  ZONE 1
 -  ZONE 2
 -  ZONE 3
 -  DEPTH SAMPLE
 -  OPEN WATER
 -  POND ACCESS
 -  DEWATERING AREA WITH ADDITIONAL EROSION CONTROLS PRIOR TO REMOVAL OF DEBRIS FROM SITE
 -  EROSION CONTROL LINE AROUND STAGING AND ACCESS AREA



General Notes:

1. This map should not be interpreted as a survey quality graphic. It is designed for preliminary planning purposes only. AES recommends consultation with a Professional Land Surveyor for an accurate site plan.
2. Property lines as depicted on this map have been approximated from plat maps available from the town assessor's online database.
3. Aerial photograph base map and other data layers acquired from the RI DEM and RIGIS database.
4. Site features located with a Juniper Geode Submetric GNSS receiver with SWmaps data collection software. Non-delineated wetland edges have not been field verified and are depicted for graphic purposes only. The required 20-foot construction setbacks are not shown on this map.

Delineation performed by:

Edward J. Avizinis

Edward J. Avizinis, CPSS, PWS, Siental #07/13/2023

Map created by:

Patrick J. Loveland

Patrick J. Loveland, GIS Specialist, 09/05/2023
 Office of Water Resources

SEP 26 2023

- Zone 1: Bullrush & sedge on shore; lily pads, cattail in water**
- Zone 2: Floating vegetation primarily sedge, with 3 phragmites plants on edge**
- Zone 3: lily pads**

1. Project shall be overseen by a professional wetland scientist
2. Erosion controls shall be established prior to initiation of work.
3. Material removed shall be focused on organic debris and sediment eroded from the road. This mixture shall be deposited to a small bobcat style bucket loader positioned on the shore from the hydrorake. The bobcat shall deposit the material into the dewatering area.
4. The small bobcat, dewatering and staging area shall be situated in an area currently lawn. The contractor shall lay down ply-wood for the bobcat to track on to limit soil disturbance in the lawn.
5. Material shall be left for at least 24 hours before being removed from the site to an appropriate composting facility.
6. Once all work is completed, soil shall be reseeded if necessary and erosion controls checked and re-established if needed.
7. A monitoring report shall be prepared and submitted to DEM at the completion of work.