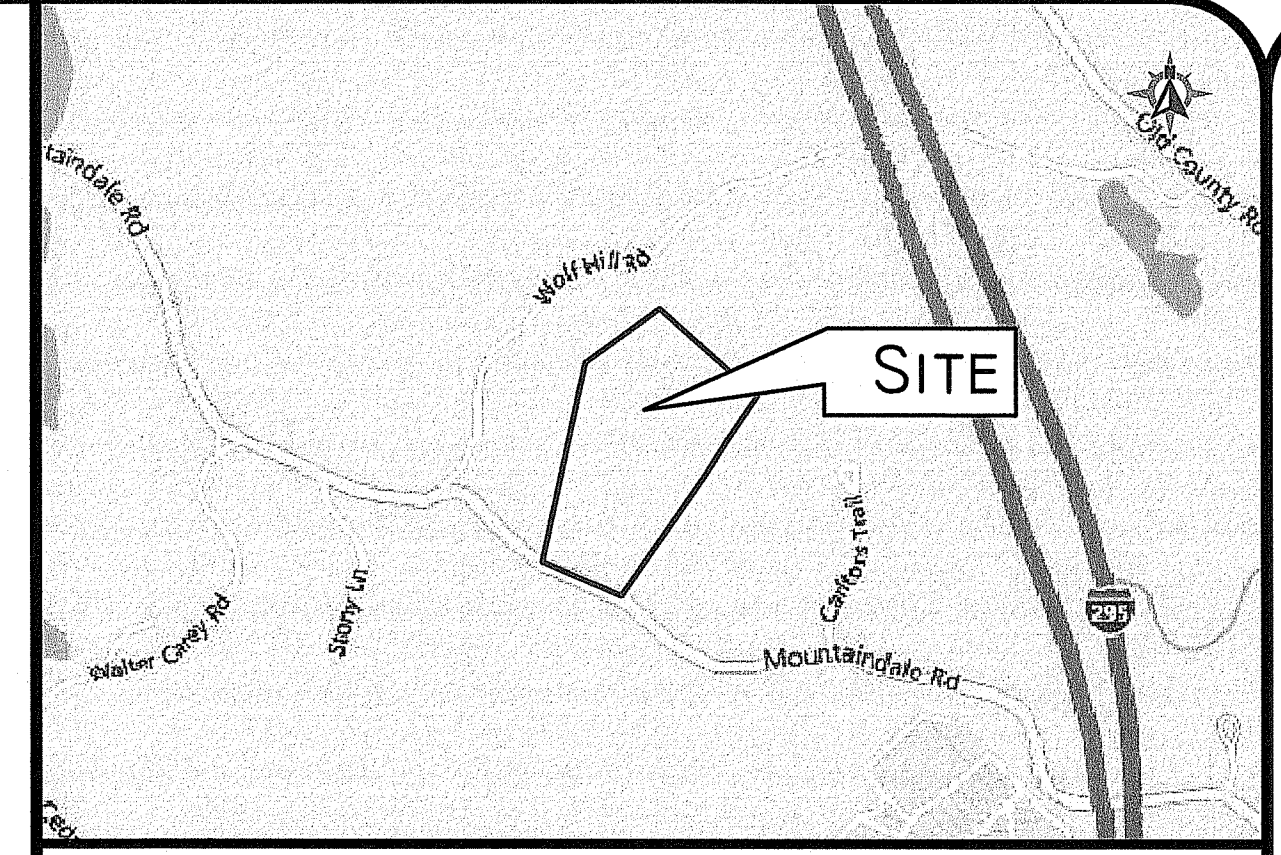


**LEGEND**

|     |     |                    |          |                  |   |                    |
|-----|-----|--------------------|----------|------------------|---|--------------------|
| --- | W   | WATER LINE         | 123/1234 | DEED BOOK/PAGE   | ○ | BOLLARD            |
| --- | S   | SEWER LINE         | AP       | ASSESSOR'S PLAT  | ⊗ | SOIL EVALUATION    |
| --- | SFM | SEWER FORCE MAIN   | HC       | HANDICAPPED      | ■ | CATCH BASIN        |
| --- | G   | GAS LINE           | N/F      | NOW OR FORMERLY  | ▨ | DOUBLE CATCH BASIN |
| --- | E   | ELECTRIC LINE      | LC       | LANDSCAPING      | ⊗ | WATER VALVE        |
| --- | OHW | OVERHEAD WIRES     | (R)      | RECORD           | ⊗ | GAS VALVE          |
| --- | D   | DRAINAGE LINE      | (CA)     | CHORD ANGLE      | ⊗ | B-I WETLAND FLAG   |
| --- | --- | MINOR CONTOUR LINE | ▲        | NAIL/SPIKE       | ⊗ | DRAINAGE MANHOLE   |
| --- | --- | MAJOR CONTOUR LINE | ⊗        | DRILL HOLE       | ⊗ | FLARED END SECTION |
| --- | --- | PROPERTY LINE      | ⊗        | IRON ROD/PIPE    | ⊗ | GUY POLE           |
| --- | --- | ASSESSORS LINE     | ⊗        | BOL              | ⊗ | ELECTRIC MANHOLE   |
| --- | --- | TREELINE           | ⊗        | SIGN POST        | ⊗ | UTILITY/POWER POLE |
| --- | --- | GUARDRAIL          | ⊗        | SEWER MANHOLE    | ⊗ | LIGHTPOST          |
| --- | --- | FENCE              | ⊗        | SEWER CLEANOUT   | ⊗ | WELL               |
| --- | --- | RETAINING WALL     | ⊗        | HYDRANT          | ⊗ | MONITORING WELL    |
| --- | --- | STONE WALL         | ⊗        | IRRIGATION VALVE | ⊗ | BENCH MARK         |
|     |     |                    | ⊗        | UNKNOWN MANHOLE  | ⊗ | TREE               |



LOCUS MAP NOT TO SCALE

**GENERAL NOTES**

1. THE PARCEL IS FOUND ON ASSESSOR'S PLAT 43, LOT 53 IN THE TOWN OF SMITHFIELD, PROVIDENCE COUNTY, RHODE ISLAND.
2. THE OWNER PER DEED BOOK 1448, PAGE 313 IS GDM ESS, LLC.
3. THIS SITE IS LOCATED IN FEMA FLOOD ZONE X. REFERENCE FEMA FLOOD INSURANCE RATE MAP 44007C0169H, MAP REVISED OCTOBER 2, 2015. THIS DESIGNATION MAY CHANGE BASED UPON REVIEW BY A FLOOD ZONE SPECIALIST OR BY THE RESULTS OF A COMPREHENSIVE FLOOD STUDY.
4. THE PARCEL IS ZONED R80 BASED ON THE TOWN OF SMITHFIELD ONLINE GIS. ANY OVERLAY DISTRICTS, SPECIAL PERMITS OR VARIANCES SPECIFIC TO THIS SITE ARE NOT TAKEN INTO CONSIDERATION. PLEASE CONTACT THE ZONING DEPARTMENT FOR ANY ADDITIONAL INFORMATION OR FOR A CERTIFICATE OF ZONING.
5. THERE WERE NO CEMETERIES, GRAVE SITES AND OR BURIAL GROUNDS OBSERVED WITHIN THE LIMITS OF THE SURVEY AND THERE ARE NO CEMETERIES, GRAVE SITES AND OR BURIAL GROUNDS SHOWN ON THE RHODE ISLAND HISTORICAL CEMETERIES ONLINE DATABASE.
6. FIELD SURVEY PERFORMED BY DIPRETE ENGINEERING ON APRIL 19, 2023. THIS PLAN REFLECTS ON THE GROUND CONDITIONS AS OF THAT DATE.
7. WETLAND LOCATIONS SHOWN BASED ON FIELD SURVEY BY DIPRETE ENGINEERING. WETLAND FLAGS WERE DELINEATED BY AVIZINIS ENVIRONMENTAL SERVICES INC. FLAG LOCATIONS SHOWN FOR B-8, E6-E9 BASED ON DATA PROVIDED BY AVIZINIS ENVIRONMENTAL SERVICES, LLC.

**Diprete Engineering**  
 Two Stafford Court, Cranston, RI 02920  
 Tel: 401-943-1000 Fax: 401-464-6006 www.diprete-eng.com

Boston · Providence · Newport

**ERIC M. PRIVE**  
 No. 8662  
 REGISTERED PROFESSIONAL ENGINEER CIVIL

| NO. | DATE     | DESCRIPTION                    | S.E.M. | BY: |
|-----|----------|--------------------------------|--------|-----|
| 0   | 02/28/23 | WETLAND EDGE VERIFICATION PLAN |        |     |

**WETLAND EDGE VERIFICATION PLAN**  
 155 MOUNTAINDALE ROAD  
 ASSESSOR'S PLAT 43, LOT 53  
 SMITHFIELD, RHODE ISLAND

PREPARED FOR:  
**GDM ESS, LLC**  
 200 CHAPEL VIEW BOULEVARD, SUITE 500  
 CRANSTON, RHODE ISLAND 02920

RI Environmental Management  
 OCT 04 2023  
 Office of Water Resources

z:\deman\projects\0501-0401-mountaindale\_road\155-mountaindale-drawings\0501-0401-040-040.dwg Plot Date: 9/26/2023