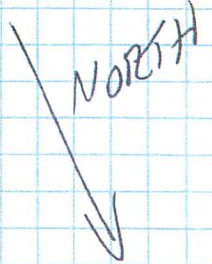


RI DEPARTMENT OF ENVIRONMENTAL MANAGEMENT
 OFFICE OF WATER RESOURCES
 FRESHWATER WETLANDS PROGRAM

APPROVED WITH CONDITIONS AS
 SPECIFIED IN THE LETTER OF APPROVAL
 DATED: MAY 28 2024 FILE #: 24-0074
 NO CHANGES ALLOWED WITHOUT PRIOR APPROVAL
 APPROVED PLANS MUST BE AT CONSTRUCTION SITE

WEST BANK (APPROX)



WEST BANK (APPROX)

QUEEN RIVER FLOW

Andy Clapp
 SCRIBED IN USE

TURBIDITY CURTAIN
 Per RI DEM

LIMIT OF DISTURBANCE
 6' WIDTH

EROSION CONTROL

COMPOST OR STRAW
 MATS PER
 RI DEM

PROPOSED
 NEW DRY
 HYDRANT

STANDOFFS
 AS NEC.
 FIELD DET.

3' WIDTH
 NEW MOWED
 ACCESS/MAINT
 PATH

LIMIT
 OF
 DISTURBANCE
 6' WIDTH

EXISTING
 BRUSH/LINES/
 BARB WIRE
 TO BE REMOVED

GUARD RAIL



CONCRETE CULVERT

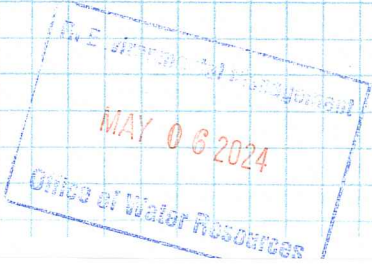
ROCK SHOULDER

EXISTING
 POST

TRAVELER
 ARROW
 LOCATOR

24-0074
 SUPPLEMENT
 SCALE 1" = 10'
 ASA DAVIS FOR
 EXISTOR (D#)
 SEE NOTES
 ATTACHED
 4/29/24

MAIL RD



TO POLE
 #46

840 FT
 WEST TO
 KINGSTON RD

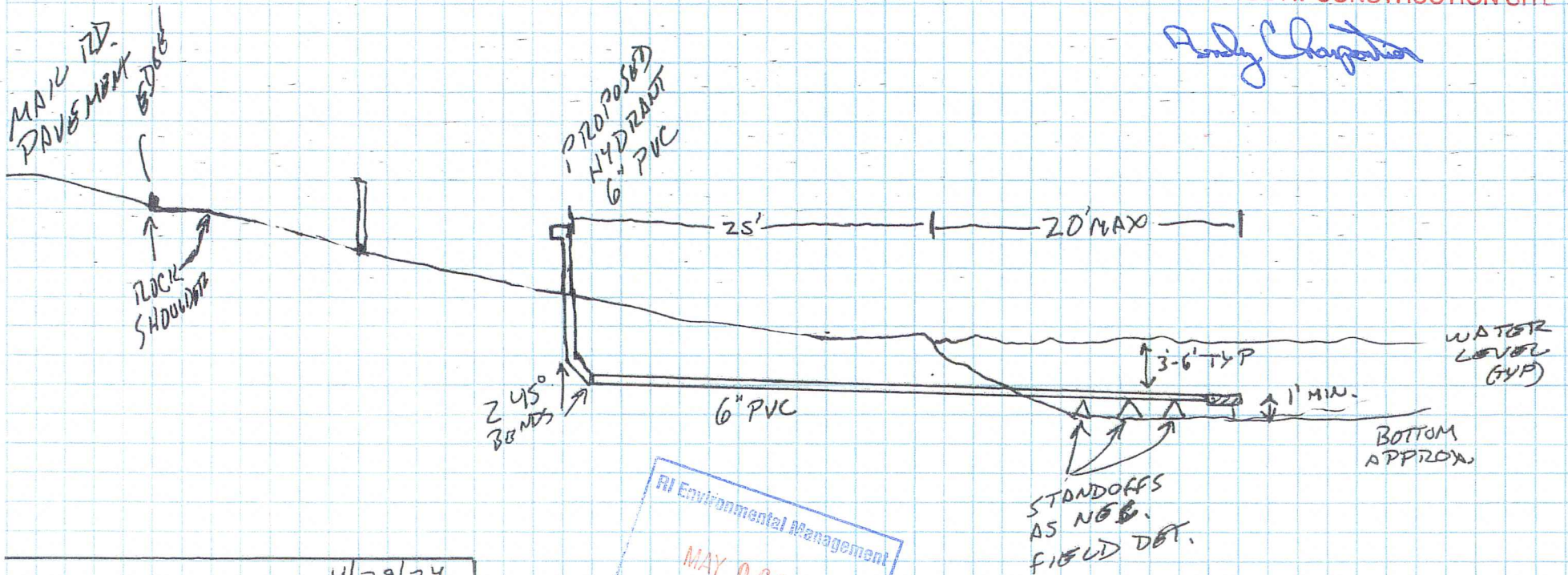
RI DEPARTMENT OF ENVIRONMENTAL MANAGEMENT
OFFICE OF WATER RESOURCES
FRESHWATER WETLANDS PROGRAM

APPROVED WITH CONDITIONS AS
SPECIFIED IN THE LETTER OF APPROVAL

DATED: MAY 28 2024 FILE #: 24-0074

NO CHANGES ALLOWED WITHOUT PRIOR APPROVAL
APPROVED PLANS MUST BE AT CONSTRUCTION SITE

Andy Chapman



4/29/24

24-0074 EXISTING FD #1
PROPOSED DRY HYDRANT
SUPPLEMENT PROFILE
SCALE 1" = 10'

ASA DAVIS
SEE ATTACHED ATTACHMENT

