



- Project Centerline
- - - Transmission Line
- Existing or Proposed Power Facility
- - - Town Boundary

**RI DEPARTMENT OF ENVIRONMENTAL MANAGEMENT
OFFICE OF WATER RESOURCES
FRESHWATER WETLANDS PROGRAM**

NOTE PER DEM:

Kindly be advised that this Permit is not equivalent to a verification of the type or extent of freshwater wetlands on site

**RI DEPARTMENT OF ENVIRONMENTAL MANAGEMENT
OFFICE OF WATER RESOURCES
FRESHWATER WETLANDS PROGRAM**

APPROVED WITH CONDITIONS AS SPECIFIED IN THE LETTER OF APPROVAL
DATED: NOV 11 2024 FILE #: 24-040
NO CHANGES ALLOWED WITHOUT PRIOR APPROVAL
APPROVED PLANS MUST BE AT CONSTRUCTION SITE

Andy Clayton

RI Department of Environmental Management
OCT 30 2024
Water Resources

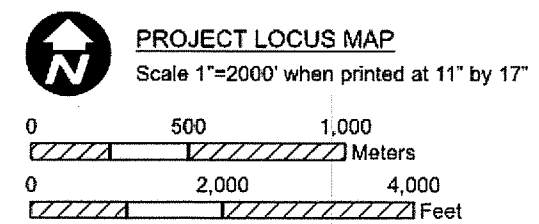
REVISIONS:

This document has been reviewed for Critical Energy Infrastructure Information (CEII). [June 2024]



POWER Engineers, Inc
2 Hampshire Street Suite 301
Foxborough, MA 02035

NOTES:
SITE INFORMATION PROVIDED BY PPL ELECTRIC UTILITIES CORPORATION (2023); INCLUDING, BUT NOT LIMITED TO PROPERTY LINES, MUNICIPAL LINES, AND PROPERTY INFORMATION, AERIALS, AND CONTOURS, RECEIVED FROM RIGIS (HTTPS://WWW.RIGIS.ORG/ (2000-2023)) AND GOOGLE EARTH (2023). ALL INFORMATION IS APPROXIMATE.
CONTRACTOR SHALL NOT CONDUCT EARTH DISTURBANCE BEYOND THE LIMITS SHOWN ON THESE DRAWINGS WITHOUT PRIOR APPROVAL BY RI ENERGY CORPORATION'S REPRESENTATIVE RESPONSIBLE FOR EROSION & SEDIMENTATION CONTROL ON SITE. THE REVIEWING AGENCY SHALL BE NOTIFIED BY PPL ELECTRIC UTILITIES CORPORATION REPRESENTATIVE RESPONSIBLE FOR EROSION & SEDIMENTATION CONTROL ON SITE OF ANY CHANGES TO THE APPROVED PLAN PRIOR TO THE IMPLEMENTATION OF THOSE CHANGES.



Rhode Island Energy
Rhode Island Energy
280 Melrose Street
Providence, RI 02907

PROJECT LOCUS MAP
Tiverton Tap Rebuild Project
Rhode Island Energy
City of Fall River, Massachusetts; Towns of Portsmouth and Tiverton, Rhode Island

SCALE AS NOTED	JOB NO. 249458	DATE: 6/7/2024	SHEET 1 of 16
----------------	----------------	----------------	---------------



- Page Boundary
- Transmission Line
- Existing or Proposed Power Facility
- Town Boundary

RI Environmental Management
 OCT 30 2024
 Office of Water Resources

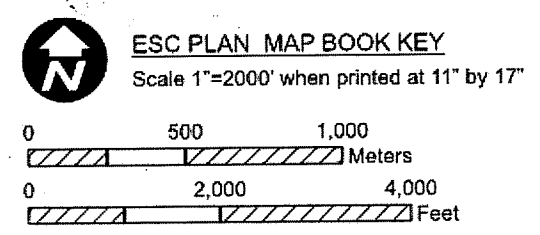
RI DEPARTMENT OF ENVIRONMENTAL MANAGEMENT
 OFFICE OF WATER RESOURCES
 FRESHWATER WETLANDS PROGRAM
 APPROVED WITH CONDITIONS AS
 SPECIFIED IN THE LETTER OF APPROVAL
 DATED: NOV 11 2024 FILE #: 24-0140
 NO CHANGES ALLOWED WITHOUT PRIOR APPROVAL
 APPROVED PLANS MUST BE AT CONSTRUCTION SITE

Andy Chappell

REVISIONS:

This document has been reviewed for Critical Energy Infrastructure Information (CEII). [June 2024]

NOTES:
 SITE INFORMATION PROVIDED BY PPL ELECTRIC UTILITIES CORPORATION (2023); INCLUDING, BUT NOT LIMITED TO PROPERTY LINES, MUNICIPAL LINES, AND PROPERTY INFORMATION, AERIALS, AND CONTOURS, RECEIVED FROM RIGIS (HTTPS://WWW.RIGIS.ORG) (2000-2023) AND GOOGLE EARTH (2023). ALL INFORMATION IS APPROXIMATE.
 CONTRACTOR SHALL NOT CONDUCT EARTH DISTURBANCE BEYOND THE LIMITS SHOWN ON THESE DRAWINGS WITHOUT PRIOR APPROVAL BY RI ENERGY CORPORATION'S REPRESENTATIVE RESPONSIBLE FOR EROSION & SEDIMENTATION CONTROL ON SITE. THE REVIEWING AGENCY SHALL BE NOTIFIED BY PPL ELECTRIC UTILITIES CORPORATION REPRESENTATIVE RESPONSIBLE FOR EROSION & SEDIMENTATION CONTROL ON SITE OF ANY CHANGES TO THE APPROVED PLAN PRIOR TO THE IMPLEMENTATION OF THOSE CHANGES.



Rhode Island Energy
 280 Melrose Street
 Providence, RI 02907



POWER Engineers, Inc
 2 Hampshire Street Suite 301
 Foxborough, MA 02035

SOIL EROSION AND SEDIMENT CONTROL PLAN INDEX
 Tiverton Tap Rebuild Project
 Rhode Island Energy
 City of Fall River, Massachusetts; Towns of Portsmouth and Tiverton, Rhode Island

SCALE AS NOTED	JOB NO. 249458	DATE: 6/7/2024	SHEET 2 of 16
----------------	----------------	----------------	---------------

General Notes:

1. Plans/Drawings are issued for permitting and soil erosion control measures.
2. Property and boundary information and existing overhead and underground utilities shown are from publicly available data and are provided for reference purposes only. POWER Engineers makes no representation or warranty as to the accuracy of location of the information shown.
3. Limits of Disturbance (LOD) are depicted as a typical work corridor within the existing electric transmission ROW, railroad ROW and public roadway ROW. Limits of Disturbance equate to the boundaries of the access routes and work pads shown on the figures.
4. Construction practices will conform with the following standards, as applicable:
 - a. Rhode Island Soil Erosion and Sediment Control Handbook
 - b. Rhode Island Storm Water Design and Installation Standards Manual
 - c. Rhode Island Department of Environmental Management Wetland BMP Manual
 - d. Rhode Island Energy ROW Access Maintenance and Construction Best Management Practices (EG-303NE)

Erosion and Sediment Control Measures:

1. Areas inside the Limits of Disturbance will be restored by the Contractor to their original condition at the Contractor's expense, to the satisfaction of Rhode Island Energy.
2. Install temporary inlet protection where catch basins are present within the work zone, including oil absorbent socks.
3. Contractor will be solely responsible for site security and job safety. All construction activity shall be in accordance with OSHA regulations and local and state requirements.
4. All materials are to be disposed of per applicable laws and regulations.
5. Dewatering activities shall occur outside of wetlands and watercourses with approved dewatering controls such as filter bags, filter socks, weir tanks or dewatering basins. Where this is not possible, dewatering effluent shall be transported offsite.
6. All wetland and waterways shall be flagged prior to commencing work activities at the site.
7. Maintain undisturbed vegetated buffers between work areas and wetlands/waterways wherever possible.
8. Limit removal of, and damage to, existing vegetation wherever possible.
9. Avoid unnecessary disturbance of site soils wherever possible.
10. Upon completion of construction in a given location (structure, work area, etc.), disturbed or exposed soils will be immediately stabilized with mulch, blankets or similar temporary erosion and sediment control practice adequate for providing temporary stabilization while vegetation becomes established.
11. Where temporary erosion control, or permanent seed mixes are placed, appropriate temporary measures will be taken to prevent soil erosion while seed is germinating.
12. Mulch will not be used as a temporary erosion control practice in drainageways. Mulch placement on steep slopes (>3:1) will be limited to hydraulic mulch or rolled erosion control products (e.g., erosion control blankets, etc.).
13. Seeding shall occur only during specified planting seasons unless otherwise directed by Rhode Island Energy.
14. Seed mixes will be approved by the Rhode Island Energy Environmental Scientist prior to placement. Seed mixes will be appropriate for the site conditions (e.g. wetland, upland, etc.).
15. Low growing, woody plant species and root systems will be retained in locations where work pads and access roads are not proposed. Care will be taken to protect such plants and their root systems from damage and compaction.
16. Perimeter sediment control locations shown on the plans contained herein are approximations, and may change depending on field conditions at the time of construction or as directed by the Rhode Island Energy Environmental Scientist. Perimeter sediment controls will not be installed directly in wetlands without prior written approval from the Rhode Island Energy Environmental Scientist.
17. Where coastal and freshwater resource areas occur immediately adjacent to and down gradient from the work, sediment perimeter controls (e.g. straw wattles, compost filter socks, excelsior sediment logs, straw bales, reinforced silt fence, etc.) will be placed between the resource area and the work zone prior to the commencement of work. Perimeter controls will be installed as close to the area of disturbance as possible. Perimeter control selection should occur in coordination with the Rhode Island Energy Environmental Scientist.
18. Perimeter sediment controls will be placed along the down slope edge of unpaved access roads as indicated on the plans wherever wetlands resource areas are closer than 50' to the edge of road and/or adjacent to slopes exceeding a grade of 3:1, or as directed by the Rhode Island Energy Environmental Scientist.
19. If required, alternatives to silt fence and/or straw bales (e.g., compost socks, wattles, excelsior sediment logs, etc.) are preferred within wetlands adjacent to the edge of the construction pad. Care should be taken to avoid disturbing wetland soils outside of limits of the construction pad and/or area while installing perimeter controls.
20. Mud box/drill cutting box locations, dewatering areas, concrete washout areas, and temporary soil stockpile areas shown on the plan indicate only that such devices and practices may be required and do not approximate locations. Final locations for such devices and practices will be determined during construction as field conditions require and allow. Dewatering may be required in additional locations depending on field conditions or weather during construction.
21. Where water bars are installed on improved access roads, they should be installed such that runoff is directed to a level spreader, stabilized outlet, or other feature designed to prevent concentrated flows from eroding adjacent locations. Wherever possible, runoff should be directed away from wetlands, waterways, and waterbodies.

22. When construction mats are used in locations where excavations/mud boxes are required for structure installation, the construction mat surface will be adequately protected to prevent siltation through the construction mats to wetlands below.
23. Where necessary, or as directed by the Rhode Island Energy Environmental Scientist, stone transition ramps shall be installed in association with construction mats.
24. All erosion and sediment controls, devices, and practices will be properly maintained, replaced, supplemented, or modified as necessary throughout the life of the project in order to minimize soil erosion and to prevent sediment from being deposited in any wetlands, or coastal features.
25. Soil stockpiles will be contained within approved construction work pads or designated stockpiling areas.
26. Where possible, soil stockpiles will not exceed 5 feet high in height. Soil stockpiles will be covered with matting, tarp, or other similar material and weights at the end of each construction day if necessary. Install perimeter controls around all stockpiles in close proximity to wetlands and contiguous areas.
27. No vehicle or equipment refueling shall occur within 100 feet of a wetland, waterbody, or waterway.
28. Stone, soil, or other fill materials will not be placed in any wetlands, waterbodies, or waterways beyond permitted areas.
29. Where work will occur in wetlands, or where waterway crossings are proposed, construction mats, or construction mat bridges will be installed respectively prior to commencing construction.
30. Upon permanent stabilization of all disturbed soils, temporary erosion and/or sediment controls and construction mats will be removed from, and disposed of properly, off-site.
31. Unless otherwise directed, all erosion and sediment controls shall be installed in accordance with, and work shall conform to Rhode Island Energy's Environmental Guidance-303NE.
32. Any potentially impacted soils or water encountered during construction activities will be managed in accordance with applicable local, state and federal regulations.
33. Mud Boxes will be used to contain and handle wetland soils and saturated soils on temporary construction work pads in wetlands.
34. Stabilized construction entrances will be installed at access route entrances onto the ROW, and will be installed with clean stone over geotextile fabric.

Erosion and Sediment Control Maintenance During Construction:

1. All Erosion and sediment control measures will be inspected for stability and proper function after every runoff producing storm event, or at least weekly. All necessary repairs will be made immediately.
2. Trapped sediment will be removed from behind perimeter control devices before the deposits reach 50 percent (1/2) of the above-ground height of the device, unless otherwise noted, or according to manufacturer's specifications.
3. Sediment will be removed from sediment traps when design capacity has been reduced by 50 percent (50%).
4. In disturbed areas where adequate seed stock is not present, or where topsoil has been displaced, soils will be prepared in a manner suitable for supporting plant growth prior to placing seed, mulch, and or other erosion control practices appropriate for the site.

Wetland Invasive Species Control Notes:

1. All construction equipment, vehicles, and materials (i.e., construction mats) must be clean and free of excess soil, debris, and vegetation before being mobilized to the Project area.
2. Construction mats or equivalent will be used in wetlands and other coastal resources during clearing and other construction operations to minimize the spread of invasive species within a wetland or coastal resource by avoiding equipment and vehicles directly traversing wetlands or coastal resources.
3. To minimize the potential for spreading invasive plant species from wetland-to-wetland, any equipment or vehicles working in or traversing a wetland will be cleaned prior to relocating to another work site. Cleaning of vehicles and equipment (including the tracks and tires) will involve removal of visible dirt, debris, and vegetation through the use of brooms, shovels, and if needed, compressed air.

**RI DEPARTMENT OF ENVIRONMENTAL MANAGEMENT
OFFICE OF WATER RESOURCES**

FRESHWATER WETLANDS PROGRAM

APPROVED WITH CONDITIONS AS

SPECIFIED IN THE LETTER OF APPROVAL

DATED: NOV 11 2024 FILE #: 24-0140
NO CHANGES ALLOWED WITHOUT PRIOR APPROVAL
APPROVED PLANS MUST BE AT CONSTRUCTION SITE
 Rhode Island Energy
 280 Melrose Street
 Providence, RI 02907

Andy...

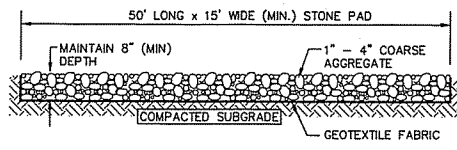


POWER Engineers, Inc
 2 Hampshire Street Suite 301
 Foxborough, MA 02035

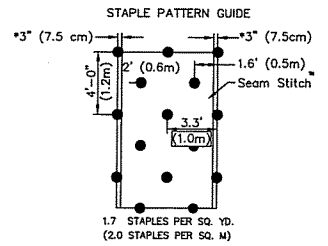
RI Environmental Management
 OCT 30 2024
 Office of Water Resources

SOIL EROSION AND SEDIMENT CONTROL PLAN GENERAL NOTES
 Tiverton Tap Rebuild Project
 Rhode Island Energy
 City of Fall River, Massachusetts; Towns of Portsmouth and Tiverton, Rhode Island

SCALE AS NOTED	JOB NO. 249458	DATE: 6/7/2024	SHEET 3 of 16
----------------	----------------	----------------	---------------



TEMPORARY CONSTRUCTION ENTRANCE
SCALE: NONE



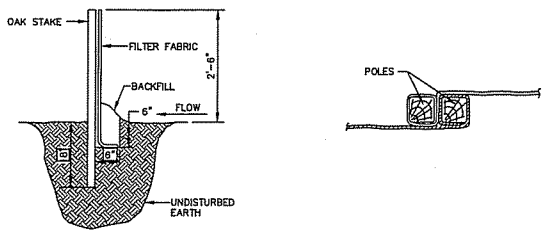
BLANKETS WITH THE OPTIONAL NORTH AMERICAN GREEN DOT SYSTEM PLACE STAPLES/STAKES THROUGH EACH OF THE GREEN COLORED DOTS.

NOTES:
 *IN LOOSE SOIL CONDITIONS, THE USE OF STAPLE OR STAKE LENGTHS GREATER THAN 6" (15CM) MAY BE NECESSARY TO PROPERLY SECURE THE BLANKETS.
 CRITICAL POINTS
 A. OVERLAPS AND SEAMS
 B. PROJECTED WATER LINE
 C. CHANNEL BOTTOM/SIDE SLOPE VERTICES
 *HORIZONTAL STAPLE SPACING SHOULD BE ALTERED IF NECESSARY TO ALLOW STAPLES TO SECURE THE CRITICAL POINTS ALONG THE CHANNEL SURFACE.
 ** IN LOOSE SOIL CONDITIONS, THE USE OF STAPLE OR STAKE LENGTHS IN EXCESS OF 6" (15 CM) MAY BE NECESSARY TO PROPERLY ANCHOR THE BLANKETS.
 *LOCATION OF SEAM STITCH WILL VARY DEPENDING ON NORTH AMERICAN GREEN PRODUCT TYPE: -APPROX. 5" SEAM OVERLAP FOR BIONET EROSION CONTROL BLANKETS

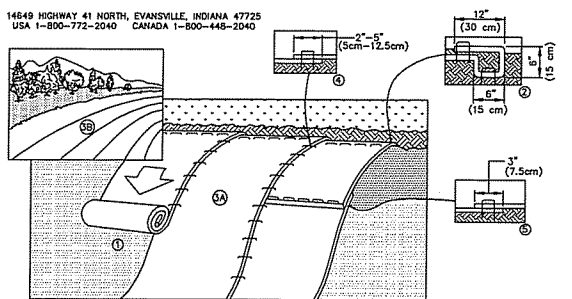
SLOPE STABILIZATION INSTALLATION
SCALE: NONE

- UPLAND ROW RESTORATION MIX - GENERAL**
 Species Composition Options:
 • Andropogon gerardii; Niagra Big Bluestem
 • Schizachyrium scoparium; Little Bluestem
 • Elymus canadensis; Canada Wild Rye
 • Elymus virginicus; Virginia Wildrye
 • Lolium multiflorum; Annual Ryegrass
 • Sorghastrum nutans; Indiangrass
 • Chamaecrista fasciculata; Partridge Pea
 • Desmodium canadense; Showy Tick Trefail
 • Helipopsis helianthoides; Ox-Eye Sunflower
 • Panicum virgatum; Switchgrass
 • Rudbeckia hirta; Black Eyed Susan
 • Poo palustris; Fowl Bluegrass
 • Agrostis perennans; Upland Bentgrass
 • Agrostis alba; Redtop
 • Festuca rubra; Red Fescue
 • Lotus corniculatus; Birds-Foot Trefail
 • Chrysanthemum leucanthem; Ox-Eye Daisy
 • Aster novae-angliae; New England Aster
- Example Seed Mixes:**
 1. Native Upland wildlife forage and Cover Meadow Mix - Ernst Conservation Seeds (ERNMX-123)
 2. Eastern Ecotype Native Grass Mix- Ernst Conservation Seeds (ERNMX-177)
 3. New England Native Warm Season Grass Mix - New England Wetland Plants, Inc.
 4. New England Logging Road Mix - New England Wetland Plants, Inc.
 5. Northeast Upland Wildflower/Restoration Erosion Mix - Southern Tier Consulting (STCMX-2)

- UPLAND ROW RESTORATION MIX - DRY/ROCKY SITES**
 Species Composition Options:
 • Festuca rubra; Red Fescue
 • Schizachyrium scoparium; Little Bluestem
 • Elymus canadensis; Canada Wild Rye
 • Bouteloua gracilis; Blue Grama
 • Lolium multiflorum; Annual Ryegrass
 • Lolium perenne; Perennial Ryegrass
 • Agrostis scabra; Rough Bentgrass
 • Agrostis perennans; Upland Bentgrass
 • Sorghastrum nutans; Indiangrass
- Example Seed Mixes:**
 1. New England Erosion Control/Restoration Mix for Dry Sites - New England Wetland Plants, Inc.
 2. Ernst Conservation Seeds and similar companies can create a custom seed mix matching the composition above (with site specific additions if necessary).



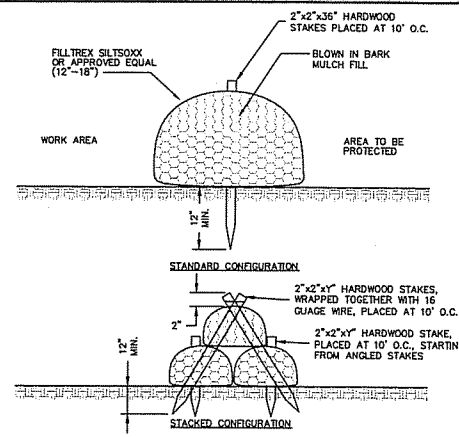
SILT FENCE
SCALE: NONE



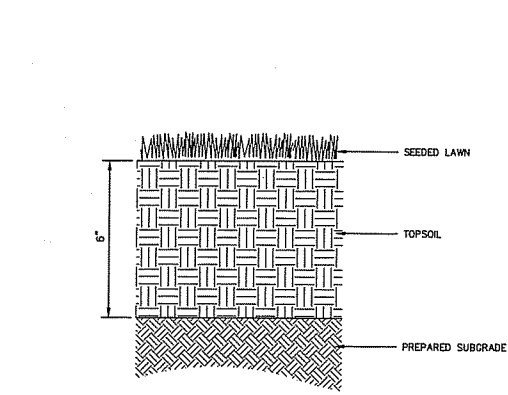
CONSTRUCTION NOTES:
 1. PREPARE SOIL BEFORE INSTALLING BLANKETS, INCLUDING ANY NECESSARY APPLICATION OF LIME, FERTILIZER, AND SEED. HYDROSEED SIDE SLOPES BEFORE INSTALLATION OF BLANKETS.
 2. BEGIN AT THE TOP OF THE SLOPE BY ANCHORING THE BLANKET IN A 6" (15cm) DEEP X 6" (15cm) WIDE TRENCH WITH APPROXIMATELY 12" (30cm) OF BLANKET EXTENDED BEYOND THE UP-SLOPE PORTION OF THE TRENCH. ANCHOR THE BLANKET WITH A ROW OF STAPLES/STAKES APPROXIMATELY 12" (30cm) APART IN THE BOTTOM OF THE TRENCH. BACKFILL AND COMPACT THE TRENCH AFTER STAPLING. APPLY SEED TO COMPACTED SOIL AND FOLD REMAINING 12" (30cm) PORTION OF BLANKET BACK OVER SEED AND COMPACTED SOIL. SECURE BLANKET OVER COMPACTED SOIL WITH A ROW OF STAPLES/STAKES SPACED APPROXIMATELY 12" (30cm) APART ACROSS THE WIDTH OF THE BLANKET.
 3. ROLL THE BLANKETS (A) DOWN OR (B) HORIZONTALLY ACROSS THE SLOPE. BLANKETS WILL UNROLL WITH APPROPRIATE SIDE AGAINST THE SOIL SURFACE. ALL BLANKETS MUST BE SECURELY FASTENED TO SOIL SURFACE BY PLACING STAPLES/STAKES IN APPROPRIATE LOCATIONS AS SHOWN IN THE STAPLE PATTERN GUIDE. WHEN USING OPTIONAL DOT SYSTEM, STAPLES/STAKES SHOULD BE PLACED THROUGH EACH OF THE COLORED DOTS CORRESPONDING TO THE APPROPRIATE STAPLE PATTERN.
 4. THE EDGES OF PARALLEL BLANKETS MUST BE STAPLED WITH APPROXIMATELY 2"-5" (5cm-12.5cm) OVERLAP DEPENDING ON BLANKET TYPE. TO ENSURE PROPER SEAM ALIGNMENT, PLACE THE EDGE OF THE OVERLAPPING BLANKET (BLANKET BEING INSTALLED ON TOP) EVEN WITH THE COLORED SEAM STITCH ON THE PREVIOUSLY INSTALLED BLANKET.
 5. CONSECUTIVE BLANKETS SPICED DOWN THE SLOPE MUST BE PLACED END OVER END (SHINGLE STYLE) WITH AN APPROXIMATE 3" (7.5cm) OVERLAP. STAPLE THROUGH OVERLAPPED AREA, APPROXIMATELY 12" (30cm) APART ACROSS ENTIRE BLANKET WIDTH.

- WETLAND ROW RESTORATION MIX**
 Species Composition Options:
 • Agrostis stolonifera; Creeping Bentgrass
 • Poa trivialis; Rough Bluegrass
 • Alopecurus pratensis; Creeping Meadow Fescue
 • Lolium multiflorum; Annual Ryegrass
 • Festuca rubra; Creeping Red Fescue
 • Elymus virginicus; Virginia Wildrye
 • Schizachyrium scoparium; Little Bluestem
 • Andropogon gerardii; Niagra Big Bluestem
 • Carex vulpinoidea; Fox Sedge
 • Panicum virgatum; Switchgrass
 • Agrostis scabra; Rough Bentgrass
 • Aster novae-angliae; New England Aster
 • Eupatorium perfoliatum; Boneset
 • Euthamia gramineifolia; Grass Leaved Goldenrod
 • Scirpus atrovirens; Green Bulrush
 • Verbena hastata; Blue Vervain
 • Juncus effusus; Soft Rush
 • Scirpus cyperinus; Wool Grass
 • Panicum clandestinum; Oenothera
- Example Seed Mixes:**
 1. New England Erosion Control/Restoration Mix for Detention Basins and Moist Sites - New England Wetland Plants, Inc.
 2. Northeast Wetland Grass Seed Mix - Southern Tier Consulting (STCMX-7)
 3. Ernst Conservation Seeds and similar companies can create a custom seed mix matching the composition above (with site specific additions if necessary).

GENERAL NOTES:
 1. Seed mixes described herein are intended to cover a variety of typical new england landscapes. However, site specific seed mixes will need to be evaluated in coastal or mountainous regions.
 2. Seed mixes described herein are intended for general ROW restoration. Site specific wetland seed mixes may be required by local, state and/or federal regulators for certain impacts to wetlands.
 3. All seed mixes are to be approved by National Grid Environmental Scientist prior to construction and must conform with all project permits.
 4. Seeded preparation and maintenance as well as temporary erosion and sediment controls are crucial to the establishment of newly seeded areas. Coordinate with National Grid Environmental Scientist on seed bed preparation and maintenance as well as temporary erosion and sediment controls prior to construction.

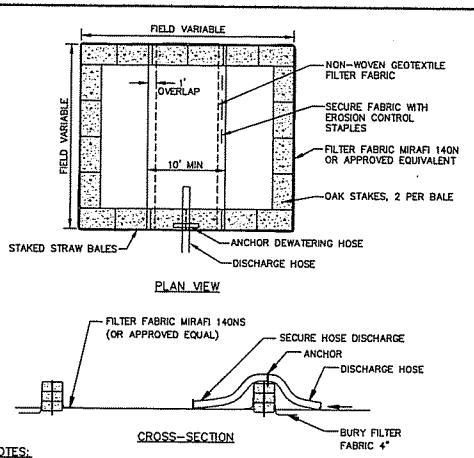


SILT SOXX
SCALE: NONE



LOAM AND SEED
SCALE: NONE

NOTES:
 1. CONTRACTOR SHALL PREPARE SOILS IN ALL DISTURBED AREAS AND AREAS USED FOR EQUIPMENT ACCESS.
 2. SEED MIX PER SECTION 10, RHODE ISLAND ENERGY ENVIRONMENTAL GUIDANCE DOCUMENT. SEE SHEET DET-002.
 3. DEPTH OF TOPSOIL LAYER MAY BE REDUCED TO 4-INCHES IF THE COMPACTED GRAVEL BASE IS SUFFICIENTLY DECOMPACTED/SCARIFIED.



DEWATERING STRAWBALE BASIN (TYPE 1)
SCALE: NONE

NOTES:
 1. NUMBER OF BALES MAY VARY DEPENDING ON SITE CONDITIONS.
 2. THE BASIN TO BE SIZED ACCORDING TO: CUBIC FEET OF STORAGE = PUMP DISCHARGE RATE (gpm) x 16
 3. SIZE SHOWN ON PLANS SHALL BE ADJUSTED AS REQUIRED FOR THE ACTUAL PUMPING RATE.

RI Environmental Management
 OCT 30 2024
 Office of Water Resources

RI DEPARTMENT OF ENVIRONMENTAL MANAGEMENT
 OFFICE OF WATER RESOURCES
 FRESHWATER WETLANDS PROGRAM
 APPROVED WITH CONDITIONS AS
 SPECIFIED IN THE LETTER OF APPROVAL
 DATED: NOV 11 2024 FILE #: 24-0146
 NO CHANGES ALLOWED WITHOUT PRIOR APPROVAL
 APPROVED PLANS MUST BE AT CONSTRUCTION SITE

Andy Chapman

NOTE: ADDITIONAL BMP MEASURES MAY BE INSTALLED AS REQUIRED IN ACCORDANCE WITH THE LATEST VERSION OF SPECIFICATION EG-303NE.

POWER ENGINEERS
 POWER Engineers, Inc
 2 Hampshire Street Suite 301
 Foxborough, MA 02035

BSC GROUP
 BUILD | SUPPORT | CONNECT
 BSC Group, Inc
 1 Mercantile Street
 Suite 610
 Worcester, MA 01608

SOIL EROSION AND SEDIMENT CONTROL DETAILS
 Tiverton Tap Rebuild Project
 Rhode Island Energy

SCALE AS NOTED	JOB NO. 249458	DATE: 10/1/2024	SHEET 4 of 17
----------------	----------------	-----------------	---------------

Rhode Island Energy
 Rhode Island Energy
 280 Melrose Street
 Providence, RI 02907

NOTES:
 SITE INFORMATION PROVIDED BY PPL ELECTRIC UTILITIES CORPORATION (2023), INCLUDING, BUT NOT LIMITED TO PROPERTY LINES, MUNICIPAL LINES, AND PROPERTY INFORMATION, AERIALS, AND CONTOURS, RECEIVED FROM RIGIS (HTTPS://WWW.RIGIS.ORG/ (2009-2023)) AND GOOGLE EARTH (2023). ALL INFORMATION IS APPROXIMATE.

CONTRACTOR SHALL NOT CONDUCT EARTH DISTURBANCE BEYOND THE LIMITS SHOWN ON THESE DRAWINGS WITHOUT PRIOR APPROVAL BY RI ENERGY CORPORATION'S REPRESENTATIVE RESPONSIBLE FOR EROSION & SEDIMENTATION CONTROL ON SITE. THE REVIEWING AGENCY SHALL BE NOTIFIED BY PPL ELECTRIC UTILITIES CORPORATION'S REPRESENTATIVE RESPONSIBLE FOR EROSION & SEDIMENTATION CONTROL ON SITE OF ANY CHANGES TO THE APPROVED PLAN PRIOR TO THE IMPLEMENTATION OF THOSE CHANGES.



WETLAND ID: TTW08 (MA)
 COWARDIN TYPE: PEM
 TEMPORARY IMPACT (SF): 2,790
 PERMANENT IMPACT (SF): 0
 SECONDARY IMPACT (SF): 0

EXISTING OSPREY
 NEST ESTABLISHED
 ON TOP OF
 TRANSMISSION
 STRUCTURE.

WETLAND ID: TTW08 (MA)
 COWARDIN TYPE: PEM
 TEMPORARY IMPACT (SF): 129
 PERMANENT IMPACT (SF): 0
 SECONDARY IMPACT (SF): 0

WETLAND ID: TTW08 (MA)
 COWARDIN TYPE: PEM
 TEMPORARY IMPACT (SF): 19,861
 PERMANENT IMPACT (SF): 0
 SECONDARY IMPACT (SF): 0

WETLAND ID: TTW08 (MA)
 COWARDIN TYPE: PEM
 TEMPORARY IMPACT (SF): 753
 PERMANENT IMPACT (SF): 0
 SECONDARY IMPACT (SF): 0

- Existing Structure
- Proposed Structure with Concrete Foundation
- Existing Transmission Line
- Proposed Transmission Line
- National Grid Owned Land
- Existing Right of Way
- Type R - Refresh/Cap Existing Sub-base
- Perimeter Sediment Control
- Type R - Refresh/Cap Existing Sub-base
- Temporary Work Area - Mow Only
- Pull Site - Mow Only and Matting
- Alternative Type Matting
- Construction Matting
- State Highway
- Minor Road
- Index Contour (10' Interval)
- Contour (2' Interval)
- 0 - 15% Slope
- > 15% Slope
- Parcel Boundary
- Culvert
- Gate
- Wetland Flag
- Wetland Border
- Isolated Wetland Border
- Ditch
- 100 ft Buffer Wetland
- Field Delineated Wetland
- NWI Wetland
- Install temporary concrete wash station.
- Dewatering Area
- Perimeter Sediment Controls
- LiDAR Tree Line
- Field Verified Tree Line

RI Environmental Management
 OCT 30 2024
 Office of Water Resources

RI DEPARTMENT OF ENVIRONMENTAL MANAGEMENT
 OFFICE OF WATER RESOURCES
 FRESHWATER WETLANDS PROGRAM
 APPROVED WITH CONDITIONS AS
 SPECIFIED IN THE LETTER OF APPROVAL
 DATED: NOV 11 2024 FILE #: 24-0140
 NO CHANGES ALLOWED WITHOUT PRIOR APPROVAL
 APPROVED PLANS MUST BE AT CONSTRUCTION SITE

REVISIONS:
 The project Limit of Disturbance (LOD) are comprised of the outer edge of all work pads, pull pads, grading areas, and road improvements within the right-of-way (ROW) shown on these plans.

Final determinations will be made in the field by Rhode Island Energy as to the extent of grading that is required for access roads and work pads, so as to minimize rock removal and earth disturbance.



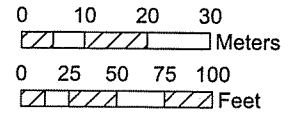
POWER Engineers, Inc
 2 Hampshire Street Suite 301
 Foxborough, MA 02035

NOTES:
 SITE INFORMATION PROVIDED BY PPL ELECTRIC UTILITIES CORPORATION (2023); INCLUDING, BUT NOT LIMITED TO PROPERTY LINES, MUNICIPAL LINES, AND PROPERTY INFORMATION, AERIALS, AND CONTOURS, RECEIVED FROM RIGIS (HTTPS://WWW.RIGIS.ORG/ (2000-2023)) AND GOOGLE EARTH (2023). ALL INFORMATION IS APPROXIMATE.

CONTRACTOR SHALL NOT CONDUCT EARTH DISTURBANCE BEYOND THE LIMITS SHOWN ON THESE DRAWINGS WITHOUT PRIOR APPROVAL BY RI ENERGY CORPORATION'S REPRESENTATIVE RESPONSIBLE FOR EROSION & SEDIMENTATION CONTROL ON SITE. THE REVIEWING AGENCY SHALL BE NOTIFIED BY PPL ELECTRIC UTILITIES CORPORATION REPRESENTATIVE RESPONSIBLE FOR EROSION & SEDIMENTATION CONTROL ON SITE OF ANY CHANGES TO THE APPROVED PLAN PRIOR TO THE IMPLEMENTATION OF THOSE CHANGES.



ESC PLAN MAP BOOK 1
 Scale 1"=100' when printed at 11" by 17"



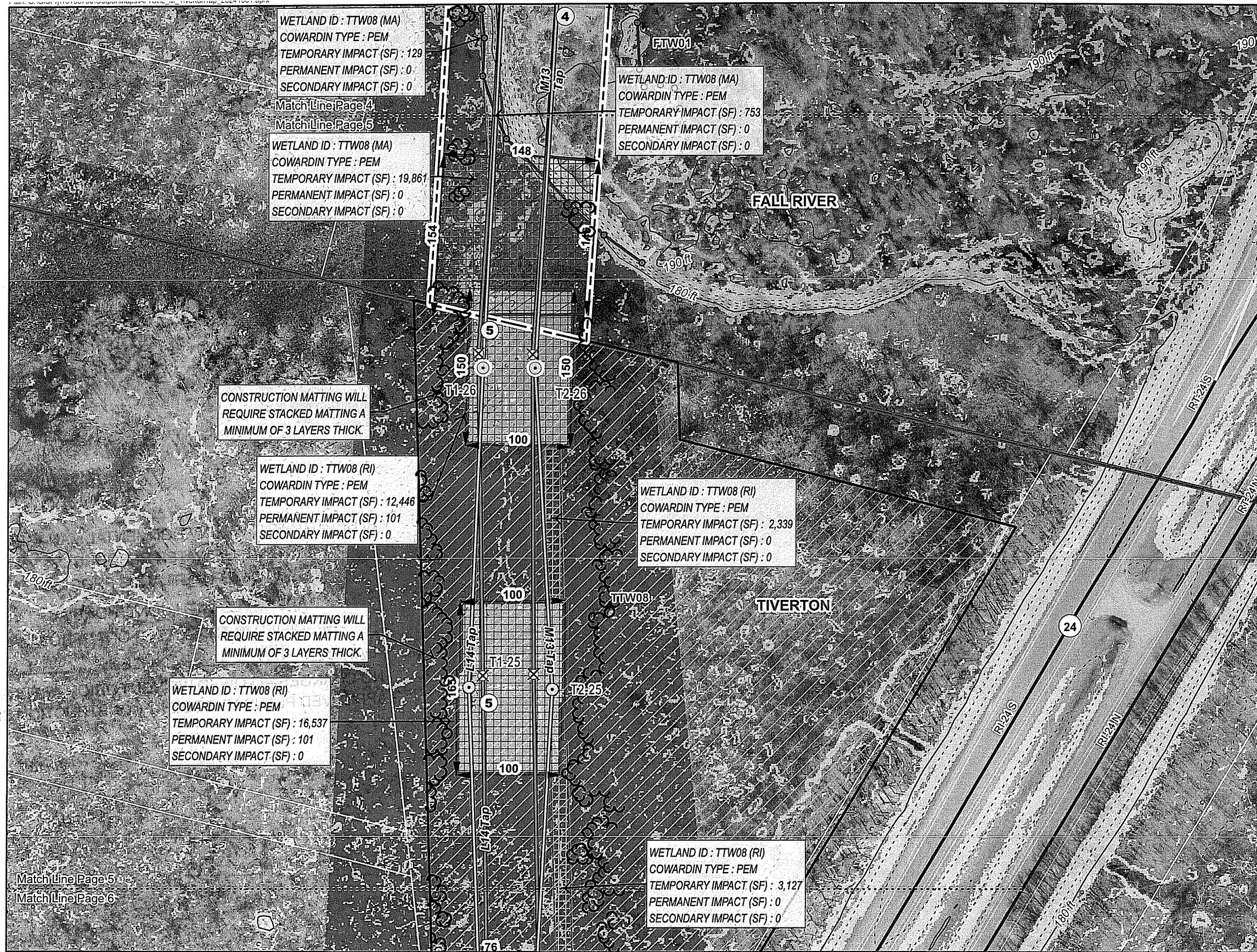
Rhode Island Energy
 280 Melrose Street
 Providence, RI 02907



BSC Group, Inc
 1 Mercantile Street
 Suite 610
 Worcester, MA 01608

SOIL EROSION AND SEDIMENT CONTROL PLAN
 Tiverton Tap Rebuild Project
 Rhode Island Energy
 City of Fall River
 Commonwealth of Massachusetts

SCALE AS NOTED	JOB NO. 249458	DATE: 10/28/2024	SHEET 5 of 17
-------------------	-------------------	---------------------	------------------



- ⊙ Proposed Structure
- ⊗ Structure To Be Removed
- ⊙ Proposed Structure with Concrete Foundation
- Existing Transmission Line
- Proposed Transmission Line
- ▨ RIE Owned Land
- ▭ Existing Right of Way
- ⊕ Perimeter Sediment Control
- ▭ Temporary Work Area - Mow Only
- ▭ Pull Site - Mow Only and Matting
- ▭ Matted Work Pad - Stacked Mats
- ▭ Alternative Type Matting
- ▭ Construction Matting
- State Highway
- Minor Road
- ~ Index Contour (10' Interval)
- ~ Contour (2' Interval)
- 0 - 15% Slope
- > 15% Slope
- Town Boundary
- ▭ Parcel Boundary
- ⊙ Wetland Flag
- Wetland Border
- Field Delineated Wetland
- ⊙ NWI Wetland
- ④ Dewatering Area

RI Environmental Management
OCT 30 2024
Office of Water Resources

RI DEPARTMENT OF ENVIRONMENTAL MANAGEMENT
OFFICE OF WATER RESOURCES
FIELD WATER WETLANDS PROGRAM

APPROVED WITH CONDITIONS AS SPECIFIED IN THE LETTER OF APPROVAL
DATED: **NOV 11 2024** FILE #: **24-0146**

REVISIONS:
NO CHANGES ALLOWED WITHOUT PRIOR APPROVAL

APPROVED FOR CONSTRUCTION SITE

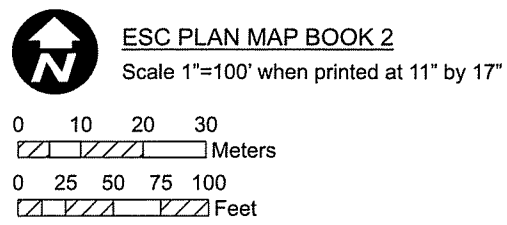
Andy Cloutier

Final determinations will be made in the field by Rhode Island Energy as to the extent of grading that is required for access roads and work pads, so as to minimize rock removal and earth disturbance.

POWER ENGINEERS
POWER Engineers, Inc
2 Hampshire Street Suite 301
Foxborough, MA 02035

NOTES:
SITE INFORMATION PROVIDED BY PPL ELECTRIC UTILITIES CORPORATION (2023); INCLUDING, BUT NOT LIMITED TO PROPERTY LINES, MUNICIPAL LINES, AND PROPERTY INFORMATION, AERIALS, AND CONTOURS, RECEIVED FROM RIGIS (HTTPS://WWW.RIGIS.ORG/ (2000-2023)) AND GOOGLE EARTH (2023). ALL INFORMATION IS APPROXIMATE.

CONTRACTOR SHALL NOT CONDUCT EARTH DISTURBANCE BEYOND THE LIMITS SHOWN ON THESE DRAWINGS WITHOUT PRIOR APPROVAL BY RI ENERGY CORPORATION'S REPRESENTATIVE RESPONSIBLE FOR EROSION & SEDIMENTATION CONTROL ON SITE. THE REVIEWING AGENCY SHALL BE NOTIFIED BY PPL ELECTRIC UTILITIES CORPORATION'S REPRESENTATIVE RESPONSIBLE FOR EROSION & SEDIMENTATION CONTROL ON SITE OF ANY CHANGES TO THE APPROVED PLAN PRIOR TO THE IMPLEMENTATION OF THOSE CHANGES.

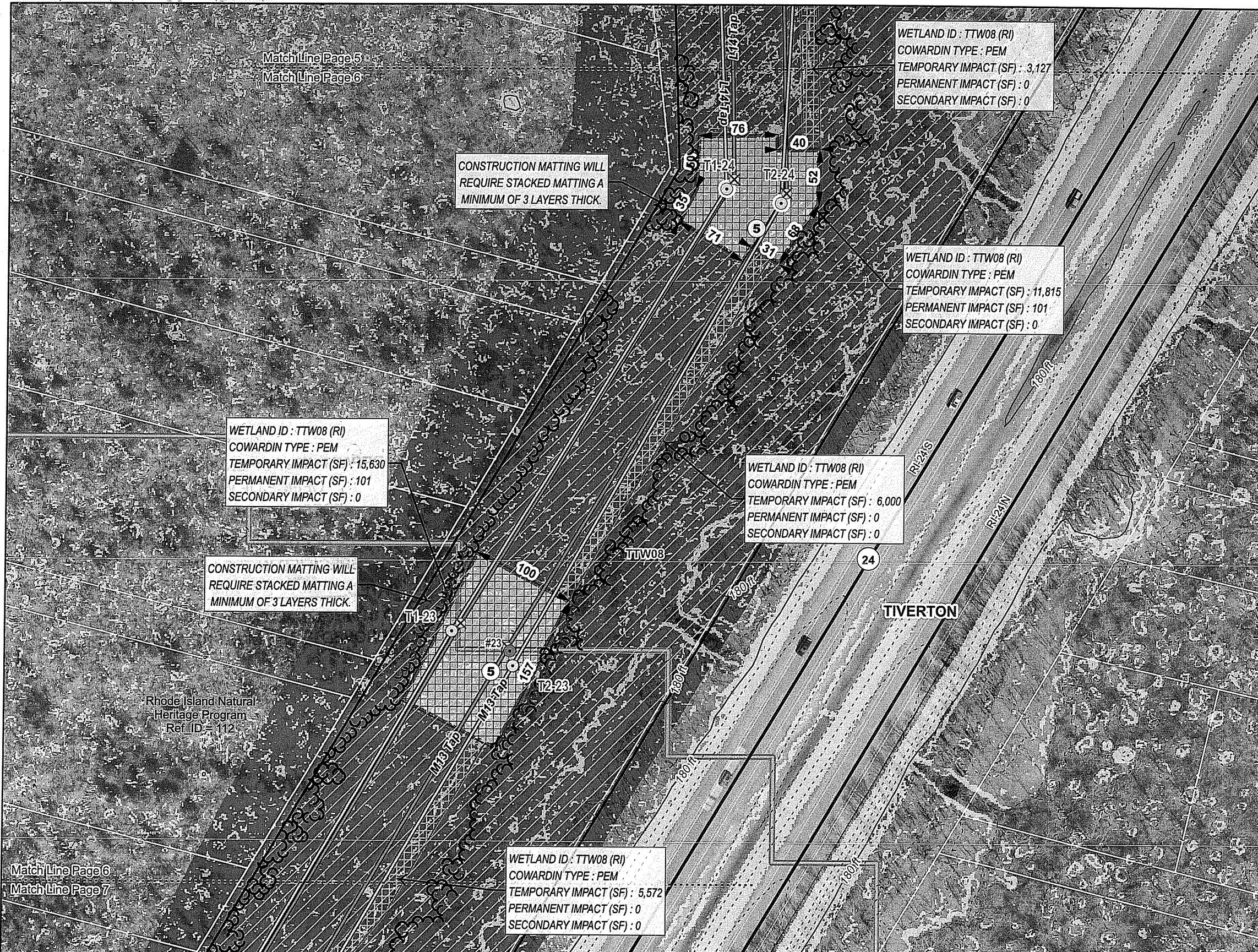


Rhode Island Energy
Rhode Island Energy
280 Melrose Street
Providence, RI 02907

BSC GROUP
BUILD | SUPPORT | CONNECT
BSC Group, Inc
1 Mercantile Street
Suite 610
Worcester, MA 01608

SOIL EROSION AND SEDIMENT CONTROL PLAN
Tiverton Tap Rebuild Project
Rhode Island Energy
City of Fall River, Town of Tiverton
Comm. of Massachusetts and State of Rhode Island

SCALE AS NOTED	JOB NO. 249458	DATE: 10/28/2024	SHEET 6 of 17
----------------	----------------	------------------	---------------



- Existing Structure
- Proposed Structure
- ⊗ Structure To Be Removed
- Proposed Structure with Concrete Foundation
- Existing Transmission Line
- Proposed Transmission Line
- ▨ RIE Owned Land
- ▩ Matted Work Pad - Stacked Mats
- ▧ Alternative Type Matting
- ▦ Construction Matting
- State Highway
- ~ Index Contour (10' Interval)
- - - Contour (2' Interval)
- 0 - 15% Slope
- > 15% Slope
- ▭ Parcel Boundary
- ▭ Field Delineated Wetland
- ▭ NWI Wetland
- ▭ Rhode Island Natural Heritage Areas
- ⑤ Install temporary mud box.
- 33 LiDAR Tree Line
- 33 Field Verified Tree Line

RI Environmental Management
 OCT 30 2024
 Office of Water Resources

RI DEPARTMENT OF ENVIRONMENTAL MANAGEMENT
OFFICE OF WATER RESOURCES
FRESHWATER WETLANDS PROGRAM
 APPROVED WITH CONDITIONS AS
 SPECIFIED IN THE LETTER OF APPROVAL
 DATED: NOV 11 2024 FILE #: 24-0140
NO CHANGES ALLOWED WITHOUT PRIOR APPROVAL
APPROVED PLANS MUST BE AT CONSTRUCTION SITE

REVISIONS: *Andy Clark*
 The project Limit of Disturbance (LOD) are comprised of the outer edge of all work pads, pull pads, grading areas, and road improvements within the right-of-way (ROW) shown on these plans.
 Final determinations will be made in the field by Rhode Island Energy as to the extent of grading that is required for access roads and work pads, so as to minimize rock removal and earth disturbance.

POWER ENGINEERS
 POWER Engineers, Inc
 2 Hampshire Street Suite 301
 Foxborough, MA 02035

NOTES:
 SITE INFORMATION PROVIDED BY PPL ELECTRIC UTILITIES CORPORATION (2023); INCLUDING, BUT NOT LIMITED TO PROPERTY LINES, MUNICIPAL LINES, AND PROPERTY INFORMATION, AERIALS, AND CONTOURS, RECEIVED FROM RIGIS (HTTPS://WWW.RIGIS.ORG/ (2000-2023)) AND GOOGLE EARTH (2023). ALL INFORMATION IS APPROXIMATE.
 CONTRACTOR SHALL NOT CONDUCT EARTH DISTURBANCE BEYOND THE LIMITS SHOWN ON THESE DRAWINGS WITHOUT PRIOR APPROVAL BY RI ENERGY CORPORATION'S REPRESENTATIVE RESPONSIBLE FOR EROSION & SEDIMENTATION CONTROL ON SITE. THE REVIEWING AGENCY SHALL BE NOTIFIED BY PPL ELECTRIC UTILITIES CORPORATION'S REPRESENTATIVE RESPONSIBLE FOR EROSION & SEDIMENTATION CONTROL ON SITE OF ANY CHANGES TO THE APPROVED PLAN PRIOR TO THE IMPLEMENTATION OF THOSE CHANGES.

ESC PLAN MAP BOOK 3
 Scale 1"=100' when printed at 11" by 17"
 0 10 20 30 Meters
 0 25 50 75 100 Feet

Rhode Island Energy
 a PPL company
 Rhode Island Energy
 280 Melrose Street
 Providence, RI 02907

BSC GROUP
 BUILD | SUPPORT | CONNECT
 BSC Group, Inc
 1 Mercantile Street
 Suite 610
 Worcester, MA 01608

SOIL EROSION AND SEDIMENT CONTROL PLAN
Tiverton Tap Rebuild Project
 Rhode Island Energy
 Town of Tiverton
 State of Rhode Island

SCALE AS NOTED	JOB NO. 249458	DATE: 10/28/2024	SHEET 7 of 17
----------------	----------------	------------------	---------------



CONSTRUCTION MATTING WILL REQUIRE STACKED MATTING A MINIMUM OF 3 LAYERS THICK.

WETLAND ID: TTW08 (RI)
 COWARDIN TYPE: PEM
 TEMPORARY IMPACT (SF): 5,572
 PERMANENT IMPACT (SF): 0
 SECONDARY IMPACT (SF): 0

WETLAND ID: TTW08 (RI)
 COWARDIN TYPE: PEM
 TEMPORARY IMPACT (SF): 8,316
 PERMANENT IMPACT (SF): 52
 SECONDARY IMPACT (SF): 0

- Existing Structure
- Proposed Structure
- ⊗ Structure To Be Removed
- Proposed Structure with Concrete Foundation
- Existing Transmission Line
- Proposed Transmission Line
- ▨ RIE Owned Land
- Type R - Refresh/Cap Existing Sub-base
- Perimeter Sediment Control
- ▨ Type R - Refresh/Cap Existing Sub-base
- Temporary Work Area - Stone - Cover with Top Soil and Stabilize Following Construction Work
- ▨ Matted Work Pad - Stacked Mats
- ▨ Alternative Type Matting
- ▨ Construction Matting
- State Highway
- Index Contour (10' Interval)
- Contour (2' Interval)
- 0 - 15% Slope
- > 15% Slope
- ▭ Parcel Boundary
- Wetland Flag
- Wetland Border
- Wetland Jurisdictional Area (100')
- ▨ Field Delineated Wetland
- ▨ NWI Wetland
- ▨ Rhode Island Natural Heritage Areas
- ② Install temporary concrete wash station.
- ④ Dewatering Area
- ⑤ Install temporary mud box.
- ⑨ Perimeter Sediment Controls
- 3 LiDAR Tree Line
- 3 Field Verified Tree Line

RI DEPARTMENT OF ENVIRONMENTAL MANAGEMENT
 OFFICE OF WATER RESOURCES
 FRESHWATER WETLANDS PROGRAM
 APPROVED WITH CONDITIONS AS SPECIFIED IN THE LETTER OF APPROVAL
 DATED: NOV 11 2024 FILE #: 24-0146
 NO CHANGES ALLOWED WITHOUT PRIOR APPROVAL
 APPROVED PLANS MUST BE AT CONSTRUCTION SITE

Andy Chapman

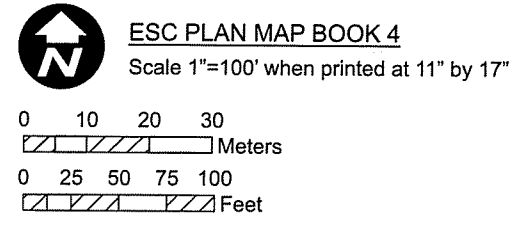
REVISIONS:
 The project Limit of Disturbance (LOD) are comprised of the outer edge of all work pads, pull pads, grading areas, and road improvements within the right-of-way (ROW) shown on these plans.

Final determinations will be made in the field by Rhode Island Energy as to the extent of grading that is required for access roads and work pads, so as to minimize rock removal and earth disturbance.

OCT 30 2024

POWER ENGINEERS
 POWER Engineers, Inc
 2 Hampshire Street Suite 301 Water Resources
 Foxborough, MA 02035

NOTES:
 SITE INFORMATION PROVIDED BY PPL ELECTRIC UTILITIES CORPORATION (2023); INCLUDING, BUT NOT LIMITED TO PROPERTY LINES, MUNICIPAL LINES, AND PROPERTY INFORMATION, AERIALS, AND CONTOURS, RECEIVED FROM RIGIS (HTTPS://WWW.RIGIS.ORG/ (2000-2023)) AND GOOGLE EARTH (2023). ALL INFORMATION IS APPROXIMATE.
 CONTRACTOR SHALL NOT CONDUCT EARTH DISTURBANCE BEYOND THE LIMITS SHOWN ON THESE DRAWINGS WITHOUT PRIOR APPROVAL BY RI ENERGY CORPORATION'S REPRESENTATIVE RESPONSIBLE FOR EROSION & SEDIMENTATION CONTROL ON SITE. THE REVIEWING AGENCY SHALL BE NOTIFIED BY PPL ELECTRIC UTILITIES CORPORATION'S REPRESENTATIVE RESPONSIBLE FOR EROSION & SEDIMENTATION CONTROL ON SITE OF ANY CHANGES TO THE APPROVED PLAN PRIOR TO THE IMPLEMENTATION OF THOSE CHANGES.



Rhode Island Energy
 a PPL company
 Rhode Island Energy
 280 Melrose Street
 Providence, RI 02907

BSC GROUP
 BUILD | SUPPORT | CONNECT
 BSC Group, Inc
 1 Mercantile Street
 Suite 610
 Worcester, MA 01608

SOIL EROSION AND SEDIMENT CONTROL PLAN
 Tiverton Tap Rebuild Project
 Rhode Island Energy
 Town of Tiverton
 State of Rhode Island

SCALE AS NOTED	JOB NO. 249458	DATE: 10/28/2024	SHEET 8 of 17
----------------	----------------	------------------	---------------



- Existing Structure
- Proposed Structure
- Structure To Be Removed
- Proposed Structure with Concrete Foundation
- Existing Transmission Line
- Proposed Transmission Line
- RIE Owned Land
- Minor Improvements - "Type 1 - RIE Standard Road", grade and scrape per specifications (15-feet and 6 inches either side) and add depth of stone per standard Type-1 specifications
- Type R - Refresh/Cap Existing Sub-base
- Perimeter Sediment Control
- Minor Improvements - "Type 1 - RIE Standard Road", grade and scrape per specifications (15-feet and 6 inches either side) and add depth of stone per standard Type-1 specifications
- Type R - Refresh/Cap Existing Sub-base
- Temporary Work Area - Mow Only
- Construction Matting
- State Highway
- Index Contour (10' Interval)
- Contour (2' Interval)
- 0 - 15% Slope
- > 15% Slope
- Parcel Boundary
- Wetland Flag
- Wetland Border
- Wetland Jurisdictional Area (100')
- Field Delineated Wetland
- NWI Wetland
- Rhode Island Natural Heritage Areas
- Install temporary mud box.
- Perimeter Sediment Controls
- LIDAR Tree Line
- Field Verified Tree Line

OCT 30 2024
 Office of Water Resources

RI DEPARTMENT OF ENVIRONMENTAL MANAGEMENT
OFFICE OF WATER RESOURCES
FRESHWATER WETLANDS PROGRAM
 APPROVED WITH CONDITIONS AS
 SPECIFIED IN THE LETTER OF APPROVAL
 DATED: NOV 11 2024 FILE #: 24-0146
NO CHANGES ALLOWED WITHOUT PRIOR APPROVAL
APPROVED PLANS MUST BE AT CONSTRUCTION SITE

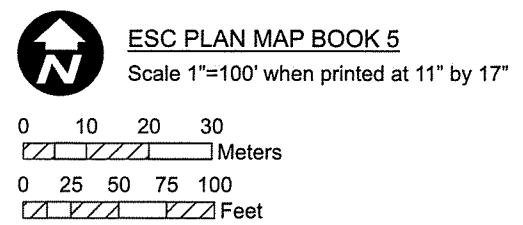
REVISIONS:
 The project Limit of Disturbance (LOD) are comprised of the outer edge of all work pads, pull pads, grading areas, and road improvements within the right-of-way (ROW) shown on these plans.

Final determinations will be made in the field by Rhode Island Energy as to the extent of grading that is required for access roads and work pads, so as to minimize rock removal and earth disturbance.

POWER Engineers, Inc
 2 Hampshire Street Suite 301
 Foxborough, MA 02035

NOTES:
 SITE INFORMATION PROVIDED BY PPL ELECTRIC UTILITIES CORPORATION (2023); INCLUDING, BUT NOT LIMITED TO PROPERTY LINES, MUNICIPAL LINES, AND PROPERTY INFORMATION, AERIALS, AND CONTOURS, RECEIVED FROM RIGIS (HTTPS://WWW.RIGIS.ORG/ (2000-2023)) AND GOOGLE EARTH (2023). ALL INFORMATION IS APPROXIMATE.

CONTRACTOR SHALL NOT CONDUCT EARTH DISTURBANCE BEYOND THE LIMITS SHOWN ON THESE DRAWINGS WITHOUT PRIOR APPROVAL BY RI ENERGY CORPORATION'S REPRESENTATIVE RESPONSIBLE FOR EROSION & SEDIMENTATION CONTROL ON SITE. THE REVIEWING AGENCY SHALL BE NOTIFIED BY PPL ELECTRIC UTILITIES CORPORATION'S REPRESENTATIVE RESPONSIBLE FOR EROSION & SEDIMENTATION CONTROL ON SITE OF ANY CHANGES TO THE APPROVED PLAN PRIOR TO THE IMPLEMENTATION OF THOSE CHANGES.



Rhode Island Energy
 a PPL company
 Rhode Island Energy
 280 Melrose Street
 Providence, RI 02907

BSC GROUP
 BUILD | SUPPORT | CONNECT
 BSC Group, Inc
 1 Mercantile Street
 Suite 610
 Worcester, MA 01608

SOIL EROSION AND SEDIMENT CONTROL PLAN
 Tiverton Tap Rebuild Project
 Rhode Island Energy
 Town of Tiverton
 State of Rhode Island

SCALE AS NOTED	JOB NO. 249458	DATE: 10/28/2024	SHEET 9 of 17
----------------	----------------	------------------	---------------



- Existing Structure
- Proposed Structure
- ⊗ Structure To Be Removed
- Proposed Structure with Concrete Foundation
- Existing Transmission Line
- Proposed Transmission Line
- ▨ RIE Owned Land
- Type R - Refresh/Cap Existing Sub-base
- Perimeter Sediment Control
- Reinforced Silt Fence
- ▨ Type R - Refresh/Cap Existing Sub-base
- Temporary Work Area - Stone - Cover with Top Soil and Stabilize Following Construction Work
- Temporary Work Area - Mow Only
- ▨ Alternative Type Matting
- ▨ Construction Matting
- State Highway
- ~ Index Contour (10' Interval)
- Contour (2' Interval)
- 0 - 15% Slope
- > 15% Slope
- ▭ Parcel Boundary
- Wetland Flag
- Wetland Border
- ▭ Wetland Jurisdictional Area (100')
- ▭ Field Delineated Wetland
- ▭ NWI Wetland
- ▭ Rhode Island Natural Heritage Areas
- ④ Dewatering Area
- ⑤ Install temporary mud box.
- ⑨ Perimeter Sediment Controls
- ▭ Rare Plant Area
- ▭ Tall Scouring Rush Status SC
- ▭ LiDAR Tree Line
- ▭ Field Verified Tree Line

RI DEPARTMENT OF ENVIRONMENTAL MANAGEMENT
OFFICE OF WATER RESOURCES
FRESHWATER WETLANDS PROGRAM
 APPROVED WITH CONDITIONS AS
 SPECIFIED IN THE LETTER OF APPROVAL
 DATED: NOV 11 2024 FILE #: 24-0146
NO CHANGES ALLOWED WITHOUT PRIOR APPROVAL
APPROVED PLANS MUST BE AT CONSTRUCTION SITE

Andy Chapman

REVISIONS:
 The project Limit of Disturbance (LOD) are comprised of the outer edge of all work pads, pull pads, grading areas, and road improvements within the right-of-way (ROW) shown on these plans.

Final determinations will be made in the field by Rhode Island Energy as to the extent of grading that is required for access roads and work pads, so as to minimize rock removal and earth disturbance.

OCT 30 2024



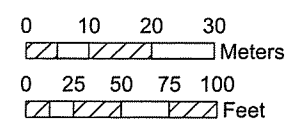
POWER Engineers, Inc
 2 Hampshire Street Suite 301
 Foxborough, MA 02035
 Office of Water Resources

NOTES:
 SITE INFORMATION PROVIDED BY PPL ELECTRIC UTILITIES CORPORATION (2023); INCLUDING, BUT NOT LIMITED TO PROPERTY LINES, MUNICIPAL LINES, AND PROPERTY INFORMATION, AERIALS, AND CONTOURS, RECEIVED FROM RIGIS (HTTPS://WWW.RIGIS.ORG/ (2000-2023)) AND GOOGLE EARTH (2023). ALL INFORMATION IS APPROXIMATE.

CONTRACTOR SHALL NOT CONDUCT EARTH DISTURBANCE BEYOND THE LIMITS SHOWN ON THESE DRAWINGS WITHOUT PRIOR APPROVAL BY RI ENERGY CORPORATION'S REPRESENTATIVE RESPONSIBLE FOR EROSION & SEDIMENTATION CONTROL ON SITE. THE REVIEWING AGENCY SHALL BE NOTIFIED BY PPL ELECTRIC UTILITIES CORPORATION'S REPRESENTATIVE RESPONSIBLE FOR EROSION & SEDIMENTATION CONTROL ON SITE OF ANY CHANGES TO THE APPROVED PLAN PRIOR TO THE IMPLEMENTATION OF THOSE CHANGES.



ESC PLAN MAP BOOK 6
 Scale 1"=100' when printed at 11" by 17"



Rhode Island Energy
 280 Melrose Street
 Providence, RI 02907



BSC Group, Inc
 1 Mercantile Street
 Suite 610
 Worcester, MA 01608

SOIL EROSION AND SEDIMENT CONTROL PLAN
Tiverton Tap Rebuild Project
 Rhode Island Energy
 Town of Tiverton
 State of Rhode Island

SCALE AS NOTED	JOB NO. 249458	DATE: 10/28/2024	SHEET 10 of 17
----------------	----------------	------------------	----------------



WETLAND ID : TTW07
 COWARDIN TYPE : PEM
 TEMPORARY IMPACT (SF) : 1,456
 PERMANENT IMPACT (SF) : 0
 SECONDARY IMPACT (SF) : 0

WETLAND ID : TTW07
 COWARDIN TYPE : PEM
 TEMPORARY IMPACT (SF) : 1,057
 PERMANENT IMPACT (SF) : 0
 SECONDARY IMPACT (SF) : 0

WETLAND ID : TTW07
 COWARDIN TYPE : PEM
 TEMPORARY IMPACT (SF) : 4,893
 PERMANENT IMPACT (SF) : 78
 SECONDARY IMPACT (SF) : 0

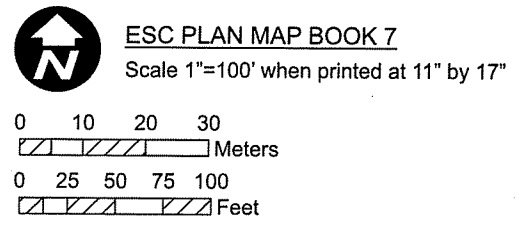
- Existing Structure
- Proposed Structure
- ⊗ Structure To Be Removed
- Proposed Structure with Concrete Foundation
- Existing Transmission Line
- Proposed Transmission Line
- ▨ RIE Owned Land
- Type R - Refresh/Cap Existing Sub-base
- Perimeter Sediment Control
- Reinforced Silt Fence
- ▨ Type R - Refresh/Cap Existing Sub-base
- ▨ Temporary Work Area - Stone - Cover with Top Soil and Stabilize Following Construction Work
- ▨ Temporary Work Area - Mow Only
- ▨ Pull Site - Mow Only and Matting
- ▨ Tiered Work Pad
- ▨ Construction Matting
- State Highway
- ~ Index Contour (10' Interval)
- - - Contour (2' Interval)
- 0 - 15% Slope
- > 15% Slope
- ▭ Parcel Boundary
- Wetland Flag
- Wetland Border
- ▨ Wetland Jurisdictional Area (100')
- ▨ Field Delineated Wetland
- ▨ NWI Wetland
- ▨ Rhode Island Natural Heritage Areas
- ② Install temporary concrete wash station.
- ④ Dewatering Area
- ⑤ Install temporary mud box.
- ⑨ Perimeter Sediment Controls
- 3 LIDAR Tree Line
- 3 Field Verified Tree Line

RI Environmental Management
 OCT 30 2024
 Office of Water Resources

RI DEPARTMENT OF ENVIRONMENTAL MANAGEMENT
 OFFICE OF WATER RESOURCES
 FRESHWATER WETLANDS PROGRAM
 APPROVED WITH CONDITIONS AS
 SPECIFIED IN THE LETTER OF APPROVAL
 DATED: NOV 11 2024 FILE #: 24-0140
 NO CHANGES ALLOWED WITHOUT PRIOR APPROVAL
 APPROVED PLANS MUST BE AT CONSTRUCTION SITE

REVISIONS:
 The project Limit of Disturbance (LOD) are comprised of the outer edge of all work pads, pull pads, grading areas, and road improvements within the right-of-way (ROW) shown on these plans.
 Final determinations will be made in the field by Rhode Island Energy as to the extent of grading that is required for access roads and work pads, so as to minimize rock removal and earth disturbance.

NOTES:
 SITE INFORMATION PROVIDED BY PPL ELECTRIC UTILITIES CORPORATION (2023); INCLUDING, BUT NOT LIMITED TO PROPERTY LINES, MUNICIPAL LINES, AND PROPERTY INFORMATION, AERIALS, AND CONTOURS, RECEIVED FROM RIGIS (HTTPS://WWW.RIGIS.ORG/ (2000-2023)) AND GOOGLE EARTH (2023). ALL INFORMATION IS APPROXIMATE.
 CONTRACTOR SHALL NOT CONDUCT EARTH DISTURBANCE BEYOND THE LIMITS SHOWN ON THESE DRAWINGS WITHOUT PRIOR APPROVAL BY RI ENERGY CORPORATION'S REPRESENTATIVE RESPONSIBLE FOR EROSION & SEDIMENTATION CONTROL ON SITE. THE REVIEWING AGENCY SHALL BE NOTIFIED BY PPL ELECTRIC UTILITIES CORPORATION'S REPRESENTATIVE RESPONSIBLE FOR EROSION & SEDIMENTATION CONTROL ON SITE OF ANY CHANGES TO THE APPROVED PLAN PRIOR TO THE IMPLEMENTATION OF THOSE CHANGES.



Rhode Island Energy
 a PPL company
 Rhode Island Energy
 280 Melrose Street
 Providence, RI 02907

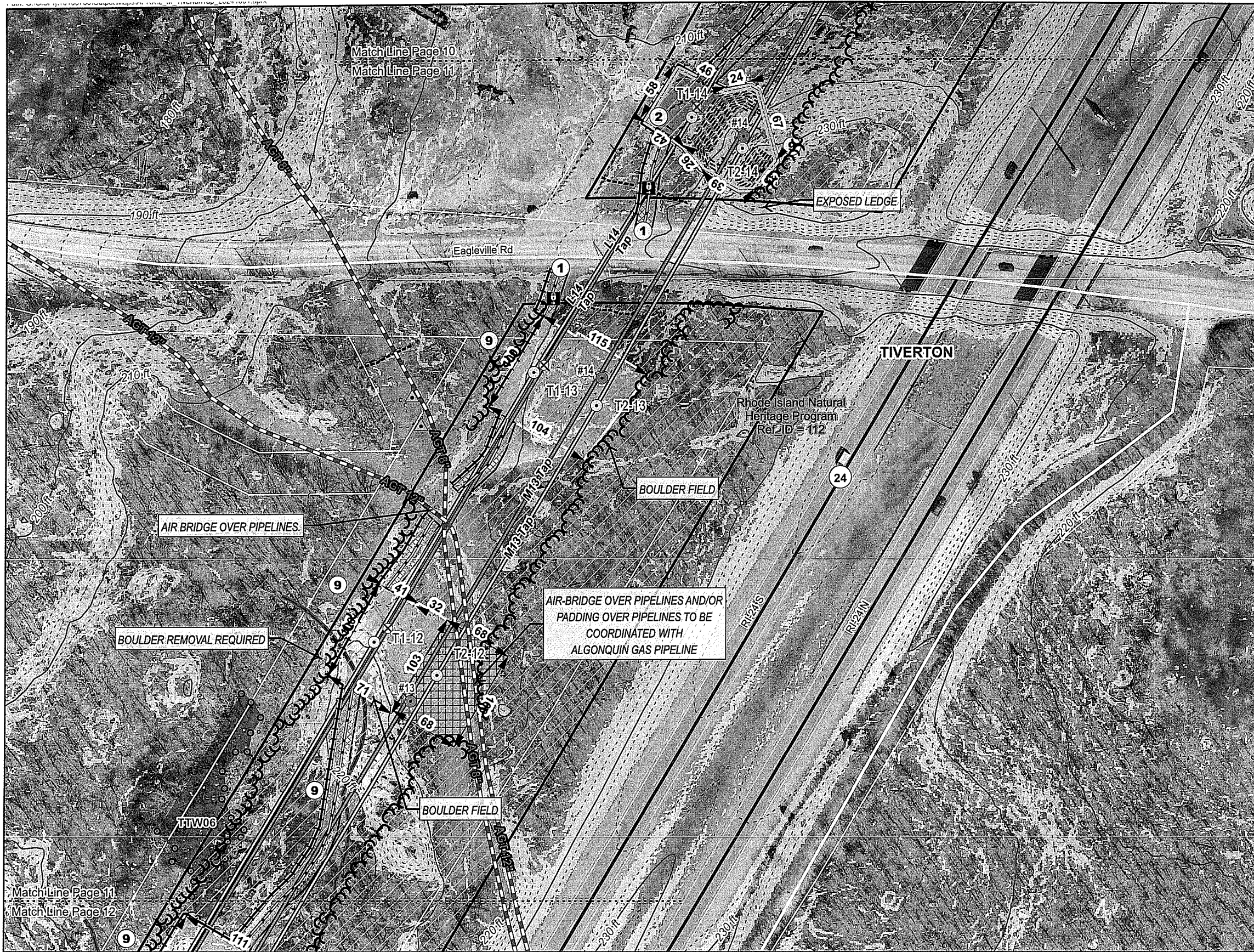


POWER Engineers, Inc
 2 Hampshire Street Suite 301
 Foxborough, MA 02035

BSC GROUP
 BUILD | SUPPORT | CONNECT
 BSC Group, Inc
 1 Mercantile Street
 Suite 610
 Worcester, MA 01608

SOIL EROSION AND SEDIMENT CONTROL PLAN
 Tiverton Tap Rebuild Project
 Rhode Island Energy
 Town of Tiverton
 State of Rhode Island

SCALE AS NOTED	JOB NO. 249458	DATE: 10/28/2024	SHEET 11 of 17
----------------	----------------	------------------	----------------



- Existing Structure
- Proposed Structure
- ✕ Structure To Be Removed
- ▭ Proposed Structure with Concrete Foundation
- Existing Transmission Line
- Proposed Transmission Line
- Natural Gas Pipeline
- ▭ RIE Owned Land
- Type R - Refresh/Cap Existing Sub-base
- Perimeter Sediment Control
- Reinforced Silt Fence
- ▭ Type R - Refresh/Cap Existing Sub-base
- ▭ Temporary Work Area - Stone - Cover with Top Soil and Stabilize Following Construction Work
- ▭ Tiered Work Pad
- ▭ Construction Matting
- State Highway
- Minor Road
- Index Contour (10' Interval)
- Contour (2' Interval)
- 0 - 15% Slope
- > 15% Slope
- ▭ Parcel Boundary
- ▲ Pipeline Marker
- Ⓜ Gate
- Wetland Flag
- Stone Wall
- Wetland Border
- Wetland Jurisdictional Area (100')
- ▭ Field Delineated Wetland
- ▭ NWI Wetland
- ▭ Rhode Island Natural Heritage Areas
- ① Install Stabilized construction ingress/egress
- ② Install temporary concrete wash station.
- ⑨ Perimeter Sediment Controls
- ③ LiDAR Tree Line
- ③ Field Verified Tree Line

**RI DEPARTMENT OF ENVIRONMENTAL MANAGEMENT
OFFICE OF WATER RESOURCES
FRESHWATER WETLANDS PROGRAM**

APPROVED WITH CONDITIONS AS
SPECIFIED IN THE LETTER OF APPROVAL
DATED: **NOV 11 2024** FILE #: **24-0146**
**NO CHANGES ALLOWED WITHOUT PRIOR APPROVAL
APPROVED PLANS MUST BE AT CONSTRUCTION SITE**

Andy Clout

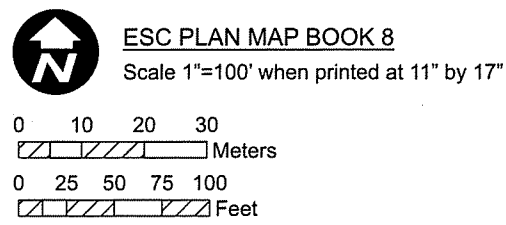
REVISIONS:
The project Limit of Disturbance (LOD) are comprised of the outer edge of all work pads, pull pads, grading areas, and road improvements within the right-of-way (ROW) shown on these plans.

Final determinations will be made in the field by Rhode Island Energy as to the extent of grading that is required for access roads and work pads, so as to minimize rock removal and earth disturbance. **OCT 30 2024**

POWER ENGINEERS POWER Engineers, Inc.
2 Hampshire Street Suite 301
Foxborough, MA 02035

NOTES:
SITE INFORMATION PROVIDED BY PPL ELECTRIC UTILITIES CORPORATION (2023); INCLUDING, BUT NOT LIMITED TO PROPERTY LINES, MUNICIPAL LINES, AND PROPERTY INFORMATION, AERIALS, AND CONTOURS, RECEIVED FROM RIGIS (HTTPS://WWW.RIGIS.ORG/ (2000-2023)) AND GOOGLE EARTH (2023). ALL INFORMATION IS APPROXIMATE.

CONTRACTOR SHALL NOT CONDUCT EARTH DISTURBANCE BEYOND THE LIMITS SHOWN ON THESE DRAWINGS WITHOUT PRIOR APPROVAL BY RI ENERGY CORPORATION'S REPRESENTATIVE RESPONSIBLE FOR EROSION & SEDIMENTATION CONTROL ON SITE. THE REVIEWING AGENCY SHALL BE NOTIFIED BY PPL ELECTRIC UTILITIES CORPORATION'S REPRESENTATIVE RESPONSIBLE FOR EROSION & SEDIMENTATION CONTROL ON SITE OF ANY CHANGES TO THE APPROVED PLAN PRIOR TO THE IMPLEMENTATION OF THOSE CHANGES.



Rhode Island Energy
a PPL company
Rhode Island Energy
280 Melrose Street
Providence, RI 02907

BSC GROUP
BUILD | SUPPORT | CONNECT
BSC Group, Inc
1 Mercantile Street
Suite 610
Worcester, MA 01608

SOIL EROSION AND SEDIMENT CONTROL PLAN
Tiverton Tap Rebuild Project
Rhode Island Energy
Town of Tiverton
State of Rhode Island

SCALE AS NOTED	JOB NO. 249458	DATE: 10/28/2024	SHEET 12 of 17
-------------------	-------------------	---------------------	-------------------



- Existing Structure
- Proposed Structure
- ⊗ Structure To Be Removed
- Proposed Structure with Concrete Foundation
- Existing Transmission Line
- Proposed Transmission Line
- Natural Gas Pipeline
- ▨ RIE Owned Land
- Type R - Refresh/Cap Existing Sub-base
- Tree Trimming or Removal
- Perimeter Sediment Control
- Reinforced Silt Fence
- ▨ Type R - Refresh/Cap Existing Sub-base
- Temporary Work Area - Stone - Cover with Top Soil and Stabilize Following Construction Work
- ▨ Tiered Work Pad
- State Highway
- Minor Road
- Index Contour (10' Interval)
- Contour (2' Interval)
- 0 - 15% Slope
- > 15% Slope
- ▨ Parcel Boundary
- Wetland Flag
- Wetland Border
- Wetland Jurisdictional Area (100')
- ▨ Field Delineated Wetland
- ▨ NWI Wetland
- ▨ Rhode Island Natural Heritage Areas
- Perimeter Sediment Controls
- LiDAR Tree Line
- Field-Verified Tree Line

RI Environmental Management
 OCT 30 2024
 Office of Water Resources

RI DEPARTMENT OF ENVIRONMENTAL MANAGEMENT
 OFFICE OF WATER RESOURCES
 FRESHWATER WETLANDS PROGRAM
 APPROVED WITH CONDITIONS AS
 SPECIFIED IN THE LETTER OF APPROVAL
 DATED: NOV 11 2024 FILE #: 24-0146
 NO CHANGES ALLOWED WITHOUT PRIOR APPROVAL
 APPROVED PLANS MUST BE AT CONSTRUCTION SITE

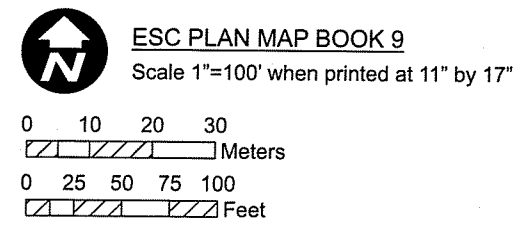
REVISIONS:
 The project Limit of Disturbance (LOD) are comprised of the outer edge of all work pads, pull pads, grading areas, and road improvements within the right-of-way (ROW) shown on these plans.

Final determinations will be made in the field by Rhode Island Energy as to the extent of grading that is required for access roads and work pads, so as to minimize rock removal and earth disturbance.

POWER Engineers, Inc
 2 Hampshire Street Suite 301
 Foxborough, MA 02035

NOTES:
 SITE INFORMATION PROVIDED BY PPL ELECTRIC UTILITIES CORPORATION (2023); INCLUDING, BUT NOT LIMITED TO PROPERTY LINES, MUNICIPAL LINES, AND PROPERTY INFORMATION, AERIALS, AND CONTOURS, RECEIVED FROM RIGIS (HTTPS://WWW.RIGIS.ORG/ (2000-2023)) AND GOOGLE EARTH (2023). ALL INFORMATION IS APPROXIMATE.

CONTRACTOR SHALL NOT CONDUCT EARTH DISTURBANCE BEYOND THE LIMITS SHOWN ON THESE DRAWINGS WITHOUT PRIOR APPROVAL BY RI ENERGY CORPORATION'S REPRESENTATIVE RESPONSIBLE FOR EROSION & SEDIMENTATION CONTROL ON SITE. THE REVIEWING AGENCY SHALL BE NOTIFIED BY PPL ELECTRIC UTILITIES CORPORATION'S REPRESENTATIVE RESPONSIBLE FOR EROSION & SEDIMENTATION CONTROL ON SITE OF ANY CHANGES TO THE APPROVED PLAN PRIOR TO THE IMPLEMENTATION OF THOSE CHANGES.



Rhode Island Energy
 a PPL company
 Rhode Island Energy
 280 Melrose Street
 Providence, RI 02907

BUILD | SUPPORT | CONNECT
 BSC Group, Inc
 1 Mercantile Street
 Suite 610
 Worcester, MA 01608

SOIL EROSION AND SEDIMENT CONTROL PLAN
 Tiverton Tap Rebuild Project
 Rhode Island Energy
 Town of Tiverton
 State of Rhode Island

SCALE AS NOTED	JOB NO. 249458	DATE: 10/28/2024	SHEET 13 of 17
-------------------	-------------------	---------------------	-------------------



- Existing Structure
- Proposed Structure
- ⊗ Structure To Be Removed
- Proposed Structure with Concrete Foundation
- Existing Transmission Line
- Proposed Transmission Line
- ▨ RIE Owned Land
- Type R - Refresh/Cap Existing Sub-base
- Perimeter Sediment Control
- Reinforced Silt Fence
- ▨ Type R - Refresh/Cap Existing Sub-base
- Temporary Work Area - Stone - Cover with Top Soil and Stabilize Following Construction Work
- ▨ Construction Matting
- ▨ Rock Ford
- State Highway
- ~ Index Contour (10' Interval)
- Contour (2' Interval)
- 0 - 15% Slope
- > 15% Slope
- ▨ Parcel Boundary
- Wetland Flag
- Stone Wall
- Wetland Border
- ▨ Area Subject to Storm Flowage (ASSF)
- ▨ Wetland Jurisdictional Area (100')
- ▨ Field Delineated Wetland
- ▨ NWI Wetland
- ▨ Rhode Island Natural Heritage Areas
- ④ Dewatering Area
- ⑤ Install temporary mud box.
- ⑨ Perimeter Sediment Controls
- 33 LiDAR Tree Line
- 33 Field Verified Tree Line

RI DEPARTMENT OF ENVIRONMENTAL MANAGEMENT
OFFICE OF WATER RESOURCES
FRESHWATER WETLANDS PROGRAM
 APPROVED WITH CONDITIONS AS
 SPECIFIED IN THE LETTER OF APPROVAL
 DATED: NOV 11 2024 FILE #: 24-0146
 NO CHANGES ALLOWED WITHOUT PRIOR APPROVAL
 APPROVED PLANS MUST BE AT CONSTRUCTION SITE

Andy Carpenter

REVISIONS:
 The project Limit of Disturbance (LOD) are comprised of the outer edge of all work pads, pull pads, grading areas, and road improvements within the right-of-way (ROW) shown on these plans.

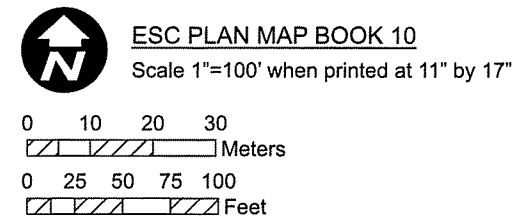
Final determinations will be made in the field by Rhode Island Energy in conjunction with the Rhode Island Department of Environmental Management as to the extent of grading that is required for access roads and work pads, so as to minimize rock removal and earth disturbance.

OCT 30 2024



POWER Engineers, Inc
 2 Hampshire Street Suite 301
 Foxborough, MA 02635
 Office of Water Resources

NOTES:
 SITE INFORMATION PROVIDED BY PPL ELECTRIC UTILITIES CORPORATION (2023); INCLUDING, BUT NOT LIMITED TO PROPERTY LINES, MUNICIPAL LINES, AND PROPERTY INFORMATION, AERIALS, AND CONTOURS, RECEIVED FROM RIGIS (HTTPS://WWW.RIGIS.ORG/ (2000-2023)) AND GOOGLE EARTH (2023). ALL INFORMATION IS APPROXIMATE.
 CONTRACTOR SHALL NOT CONDUCT EARTH DISTURBANCE BEYOND THE LIMITS SHOWN ON THESE DRAWINGS WITHOUT PRIOR APPROVAL BY RI ENERGY CORPORATION'S REPRESENTATIVE RESPONSIBLE FOR EROSION & SEDIMENTATION CONTROL ON SITE. THE REVIEWING AGENCY SHALL BE NOTIFIED BY PPL ELECTRIC UTILITIES CORPORATION'S REPRESENTATIVE RESPONSIBLE FOR EROSION & SEDIMENTATION CONTROL ON SITE OF ANY CHANGES TO THE APPROVED PLAN PRIOR TO THE IMPLEMENTATION OF THOSE CHANGES.

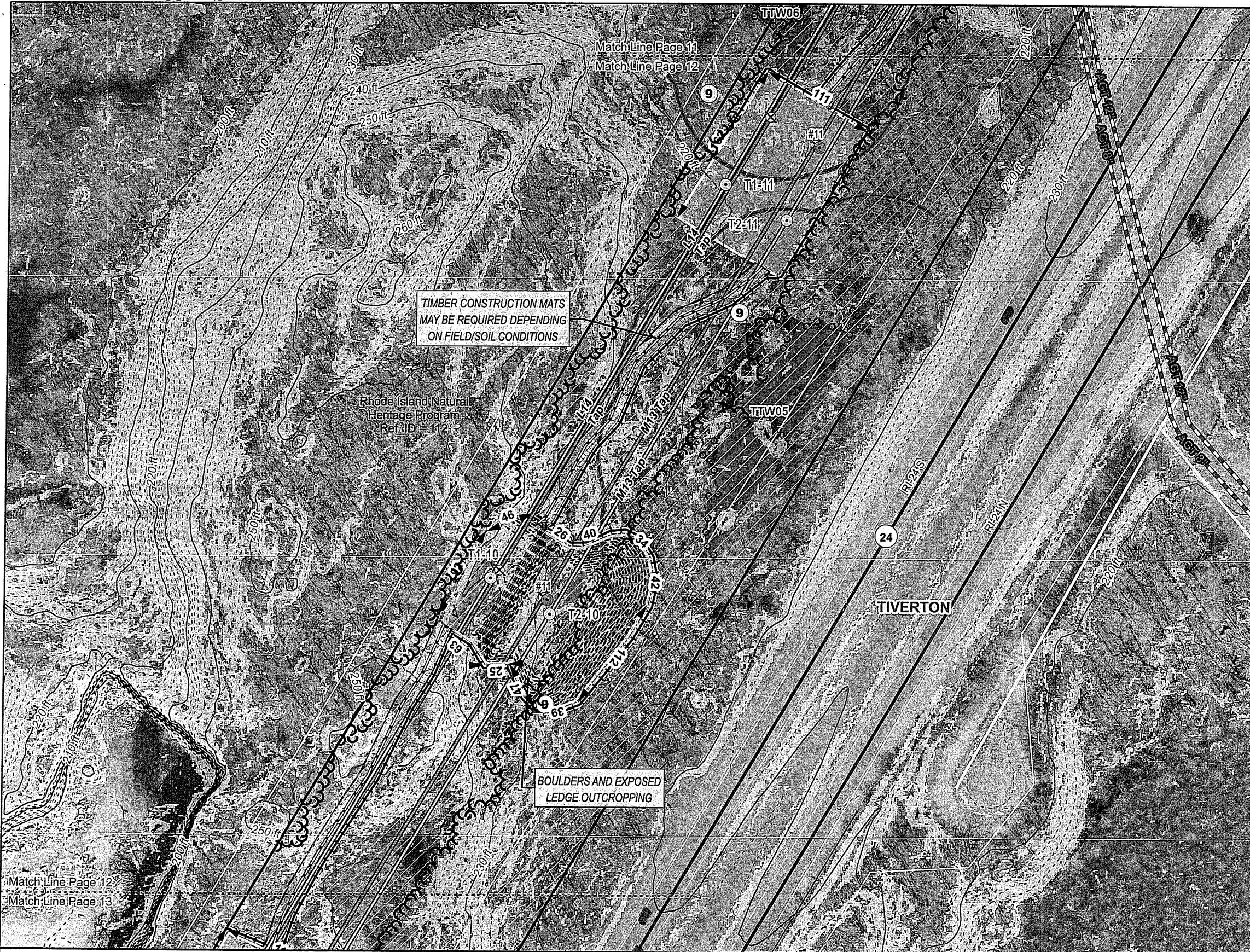


Rhode Island Energy
 a PPL company
 Rhode Island Energy
 280 Melrose Street
 Providence, RI 02907

BSC GROUP
 BUILD | SUPPORT | CONNECT
 BSC Group, Inc
 1 Mercantile Street
 Suite 610
 Worcester, MA 01608

SOIL EROSION AND SEDIMENT CONTROL PLAN
Tiverton Tap Rebuild Project
 Rhode Island Energy
 Town of Tiverton
 State of Rhode Island

SCALE AS NOTED	JOB NO. 249458	DATE: 10/28/2024	SHEET 14 of 17
----------------	----------------	------------------	----------------



- Existing Structure
- Proposed Structure
- ⊗ Structure To Be Removed
- Proposed Structure with Concrete Foundation
- Existing Transmission Line
- Proposed Transmission Line
- Natural Gas Pipeline
- ▭ RIE Owned Land
- Type R - Refresh/Cap Existing Sub-base
- ▭ Tree Trimming or Removal
- Perimeter Sediment Control
- Reinforced Silt Fence
- ▨ Type R - Refresh/Cap Existing Sub-base
- ▭ Temporary Work Area - Stone - Cover with Top Soil and Stabilize Following Construction Work
- ▭ Tiered Work Pad
- State Highway
- Minor Road
- Index Contour (10' Interval)
- Contour (2' Interval)
- 0 - 15% Slope
- > 15% Slope
- ▭ Parcel Boundary
- Wetland Flag
- Wetland Border
- ▭ Wetland Jurisdictional Area (100')
- ▭ Field Delineated Wetland
- ▭ NWI Wetland
- ▭ Rhode Island Natural Heritage Areas
- Perimeter Sediment Controls
- LiDAR Tree Line
- Field-Verified Tree Line

RI Environmental Management
 OCT 30 2024
 Office of Water Resources

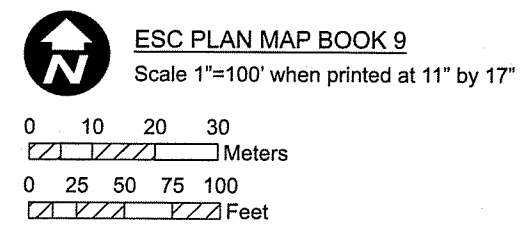
RI DEPARTMENT OF ENVIRONMENTAL MANAGEMENT
 OFFICE OF WATER RESOURCES
 FRESHWATER WETLANDS PROGRAM
 APPROVED WITH CONDITIONS AS
 SPECIFIED IN THE LETTER OF APPROVAL
 DATED: NOV 11 2024 FILE #: 24-0146
 NO CHANGES ALLOWED WITHOUT PRIOR APPROVAL
 APPROVED PLANS MUST BE AT CONSTRUCTION SITE

REVISIONS:
 The project Limit of Disturbance (LOD) are comprised of the outer edge of all work pads, pull pads, grading areas, and road improvements within the right-of-way (ROW) shown on these plans.

Final determinations will be made in the field by Rhode Island Energy as to the extent of grading that is required for access roads and work pads, so as to minimize rock removal and earth disturbance.

NOTES:
 SITE INFORMATION PROVIDED BY PPL ELECTRIC UTILITIES CORPORATION (2023); INCLUDING, BUT NOT LIMITED TO PROPERTY LINES, MUNICIPAL LINES, AND PROPERTY INFORMATION, AERIALS, AND CONTOURS, RECEIVED FROM RIGIS (HTTPS://WWW.RIGIS.ORG/ (2000-2023)) AND GOOGLE EARTH (2023). ALL INFORMATION IS APPROXIMATE.

CONTRACTOR SHALL NOT CONDUCT EARTH DISTURBANCE BEYOND THE LIMITS SHOWN ON THESE DRAWINGS WITHOUT PRIOR APPROVAL BY RI ENERGY CORPORATION'S REPRESENTATIVE RESPONSIBLE FOR EROSION & SEDIMENTATION CONTROL ON SITE. THE REVIEWING AGENCY SHALL BE NOTIFIED BY PPL ELECTRIC UTILITIES CORPORATION'S REPRESENTATIVE RESPONSIBLE FOR EROSION & SEDIMENTATION CONTROL ON SITE OF ANY CHANGES TO THE APPROVED PLAN PRIOR TO THE IMPLEMENTATION OF THOSE CHANGES.



Rhode Island Energy
a PPL company

Rhode Island Energy
 280 Melrose Street
 Providence, RI 02907

POWER ENGINEERS

POWER Engineers, Inc
 2 Hampshire Street Suite 301
 Foxborough, MA 02035

BSC GROUP
BUILD | SUPPORT | CONNECT
 BSC Group, Inc
 1 Mercantile Street
 Suite 610
 Worcester, MA 01608

SOIL EROSION AND SEDIMENT CONTROL PLAN
 Tiverton Tap Rebuild Project
 Rhode Island Energy
 Town of Tiverton
 State of Rhode Island

SCALE AS NOTED	JOB NO. 249458	DATE: 10/28/2024	SHEET 13 of 17
-------------------	-------------------	---------------------	-------------------



- Existing Structure
- Proposed Structure
- Structure To Be Removed
- Proposed Structure with Concrete Foundation
- Existing Transmission Line
- Proposed Transmission Line
- RIE Owned Land
- Type R - Refresh/Cap Existing Sub-base
- Perimeter Sediment Control
- Reinforced Silt Fence
- Type R - Refresh/Cap Existing Sub-base
- Temporary Work Area - Stone - Cover with Top Soil and Stabilize Following Construction Work
- Temporary Work Area - Mow Only
- Pull Site - Mow Only and Matting
- Tiered Work Pad
- Construction Matting
- State Highway
- Index Contour (10' Interval)
- Contour (2' Interval)
- 0 - 15% Slope
- > 15% Slope
- Parcel Boundary
- Culvert
- Wetland Flag
- Stone Wall
- Wetland Border
- Wetland Jurisdictional Area (100')
- Field Delineated Wetland
- NWI Wetland
- Rhode Island Natural Heritage Areas
- Dewatering Area
- Install temporary mud box.
- Perimeter Sediment Controls
- LIDAR Tree Line
- Field Delineated Tree Line

OCT 30 2024
Office of Water Resources

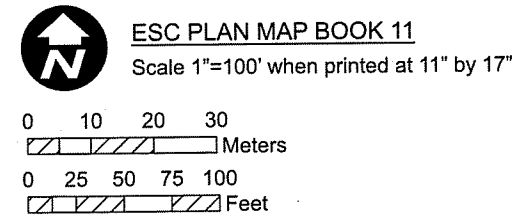
RI DEPARTMENT OF ENVIRONMENTAL MANAGEMENT
OFFICE OF WATER RESOURCES
FRESHWATER WETLANDS PROGRAM
APPROVED WITH CONDITIONS AS
SPECIFIED IN THE LETTER OF APPROVAL
DATED: NOV 11 2024 FILE #: 24-0140
NO CHANGES ALLOWED WITHOUT PRIOR APPROVAL
APPROVED PLANS MUST BE AT CONSTRUCTION SITE

REVISIONS:
The project Limit of Disturbance (LOD) are comprised of the outer edge of all work pads, pull pads, grading areas, and road improvements within the right-of-way (ROW) shown on these plans.
Final determinations will be made in the field by Rhode Island Energy as to the extent of grading that is required for access roads and work pads, so as to minimize rock removal and earth disturbance.

POWER ENGINEERS
POWER Engineers, Inc
2 Hampshire Street Suite 301
Foxborough, MA 02035

NOTES:
SITE INFORMATION PROVIDED BY PPL ELECTRIC UTILITIES CORPORATION (2023); INCLUDING, BUT NOT LIMITED TO PROPERTY LINES, MUNICIPAL LINES, AND PROPERTY INFORMATION, AERIALS, AND CONTOURS, RECEIVED FROM RIGIS (HTTPS://WWW.RIGIS.ORG/ (2000-2023)) AND GOOGLE EARTH (2023). ALL INFORMATION IS APPROXIMATE.

CONTRACTOR SHALL NOT CONDUCT EARTH DISTURBANCE BEYOND THE LIMITS SHOWN ON THESE DRAWINGS WITHOUT PRIOR APPROVAL BY RI ENERGY CORPORATION'S REPRESENTATIVE RESPONSIBLE FOR EROSION & SEDIMENTATION CONTROL ON SITE. THE REVIEWING AGENCY SHALL BE NOTIFIED BY PPL ELECTRIC UTILITIES CORPORATION'S REPRESENTATIVE RESPONSIBLE FOR EROSION & SEDIMENTATION CONTROL ON SITE OF ANY CHANGES TO THE APPROVED PLAN PRIOR TO THE IMPLEMENTATION OF THOSE CHANGES.

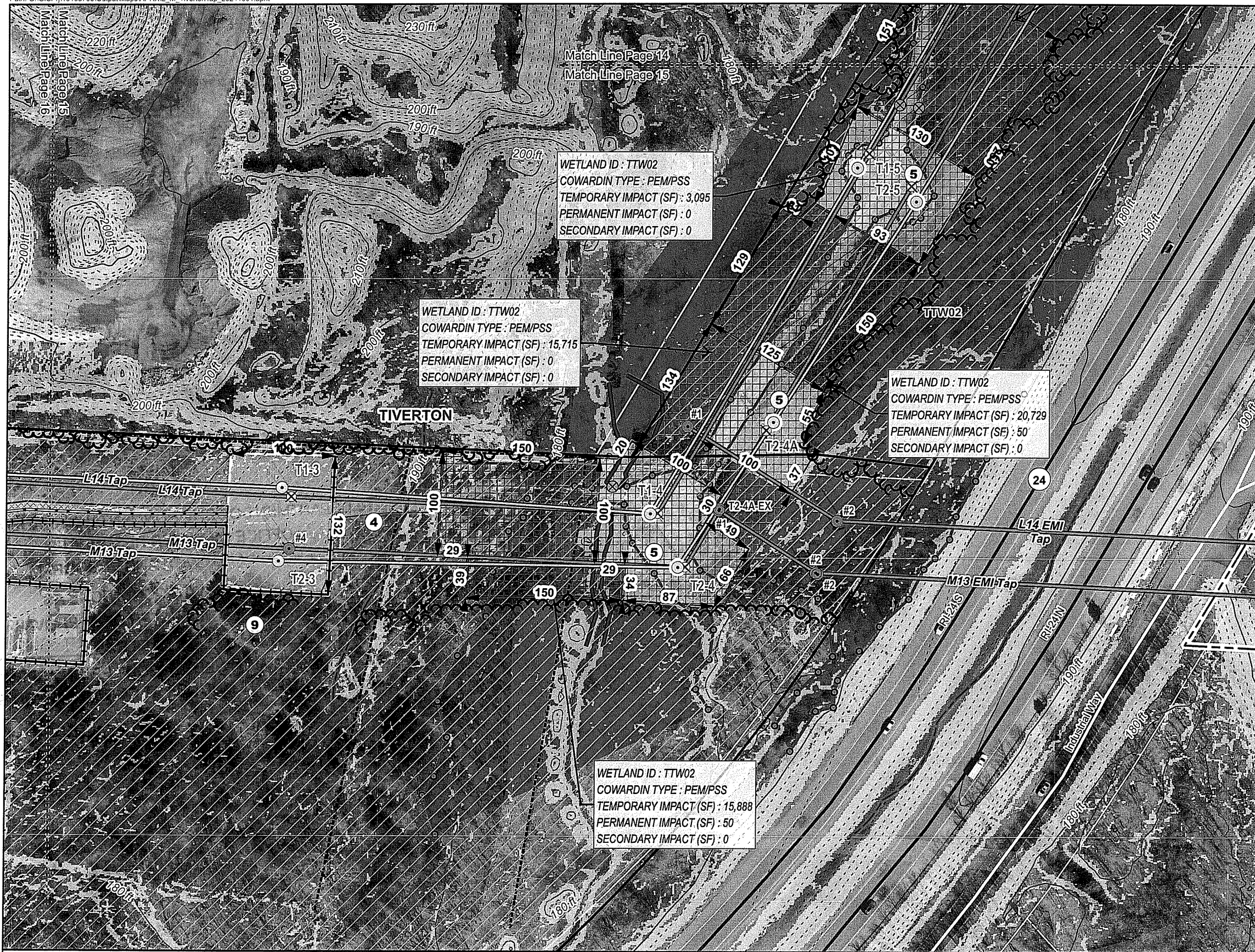


Rhode Island Energy
a PPL company
Rhode Island Energy
280 Melrose Street
Providence, RI 02907

BSC GROUP
BUILD | SUPPORT | CONNECT
BSC Group, Inc
1 Mercantile Street
Suite 610
Worcester, MA 01608

SOIL EROSION AND SEDIMENT CONTROL PLAN
Tiverton Tap Rebuild Project
Rhode Island Energy
Town of Tiverton
State of Rhode Island

SCALE AS NOTED	JOB NO. 249458	DATE: 10/28/2024	SHEET 15 of 17
----------------	----------------	------------------	----------------



WETLAND ID : TTW02
 COWARDIN TYPE : PEM/PSS
 TEMPORARY IMPACT (SF) : 3,095
 PERMANENT IMPACT (SF) : 0
 SECONDARY IMPACT (SF) : 0

WETLAND ID : TTW02
 COWARDIN TYPE : PEM/PSS
 TEMPORARY IMPACT (SF) : 15,715
 PERMANENT IMPACT (SF) : 0
 SECONDARY IMPACT (SF) : 0

WETLAND ID : TTW02
 COWARDIN TYPE : PEM/PSS
 TEMPORARY IMPACT (SF) : 20,729
 PERMANENT IMPACT (SF) : 50
 SECONDARY IMPACT (SF) : 0

WETLAND ID : TTW02
 COWARDIN TYPE : PEM/PSS
 TEMPORARY IMPACT (SF) : 15,888
 PERMANENT IMPACT (SF) : 50
 SECONDARY IMPACT (SF) : 0

- Existing Structure
- Proposed Structure
- Structure To Be Removed
- Proposed Structure with Concrete Foundation
- Existing Transmission Line
- Proposed Transmission Line
- RIE Owned Land
- Existing Right of Way
- Type R - Refresh/Cap Existing Sub-base
- Perimeter Sediment Control
- Type R - Refresh/Cap Existing Sub-base
- Temporary Work Area - Stone - Cover with Top Soil and Stabilize Following Construction Work
- Temporary Work Area - Mow Only
- Pull Site - Mow Only and Matting
- Laydown Area
- Alternative Type Matting
- Construction Matting
- State Highway
- Minor Road
- Index Contour (10' Interval)
- Contour (2' Interval)
- 0 - 15% Slope
- > 15% Slope
- Parcel Boundary
- Culvert
- Wetland Flag
- Fence
- Stone Wall
- Wetland Border
- Ordinary High Water Line
- Area Subject to Storm Flowage (ASSF)
- Wetland Jurisdictional Area (100')
- Field Delineated Wetland
- NWI Wetland
- Dewatering Area
- Install temporary mud box.
- Perimeter Sediment Controls
- LIDAR Tree Line
- Field Verified Tree Line

**RI DEPARTMENT OF ENVIRONMENTAL MANAGEMENT
 OFFICE OF WATER RESOURCES
 FRESHWATER WETLANDS PROGRAM**

APPROVED WITH CONDITIONS AS SPECIFIED IN THE LETTER OF APPROVAL
 DATED: NOV 11 2024 FILE #: 24-0146
 NO CHANGES ALLOWED WITHOUT PRIOR APPROVAL
 APPROVED PLANS MUST BE AT CONSTRUCTION SITE

Andy Chapman

REVISIONS:
 The project Limit of Disturbance (LOD) are comprised of the outer edge of all work pads, pull pads, grading areas, and road improvements within the right-of-way (ROW) shown on these plans.

Final determinations will be made in the field by Rhode Island Energy as to the extent of grading that is required for access roads and work pads, so as to minimize rock removal and earth disturbance.

POWER ENGINEERS POWER Engineers, Inc
 2 Hampshire Street Suite 301
 Foxborough, MA 02035
 OCT 30 2024
 Office of Water Resources

NOTES:
 SITE INFORMATION PROVIDED BY PPL ELECTRIC UTILITIES CORPORATION (2023); INCLUDING, BUT NOT LIMITED TO PROPERTY LINES, MUNICIPAL LINES, AND PROPERTY INFORMATION, AERIALS, AND CONTOURS, RECEIVED FROM RIGIS (HTTPS://WWW.RIGIS.ORG/ (2000-2023)) AND GOOGLE EARTH (2023). ALL INFORMATION IS APPROXIMATE.

CONTRACTOR SHALL NOT CONDUCT EARTH DISTURBANCE BEYOND THE LIMITS SHOWN ON THESE DRAWINGS WITHOUT PRIOR APPROVAL BY RI ENERGY CORPORATION'S REPRESENTATIVE RESPONSIBLE FOR EROSION & SEDIMENTATION CONTROL ON SITE. THE REVIEWING AGENCY SHALL BE NOTIFIED BY PPL ELECTRIC UTILITIES CORPORATION'S REPRESENTATIVE RESPONSIBLE FOR EROSION & SEDIMENTATION CONTROL ON SITE OF ANY CHANGES TO THE APPROVED PLAN PRIOR TO THE IMPLEMENTATION OF THOSE CHANGES.

ESC PLAN MAP BOOK 12
 Scale 1"=100' when printed at 11" by 17"

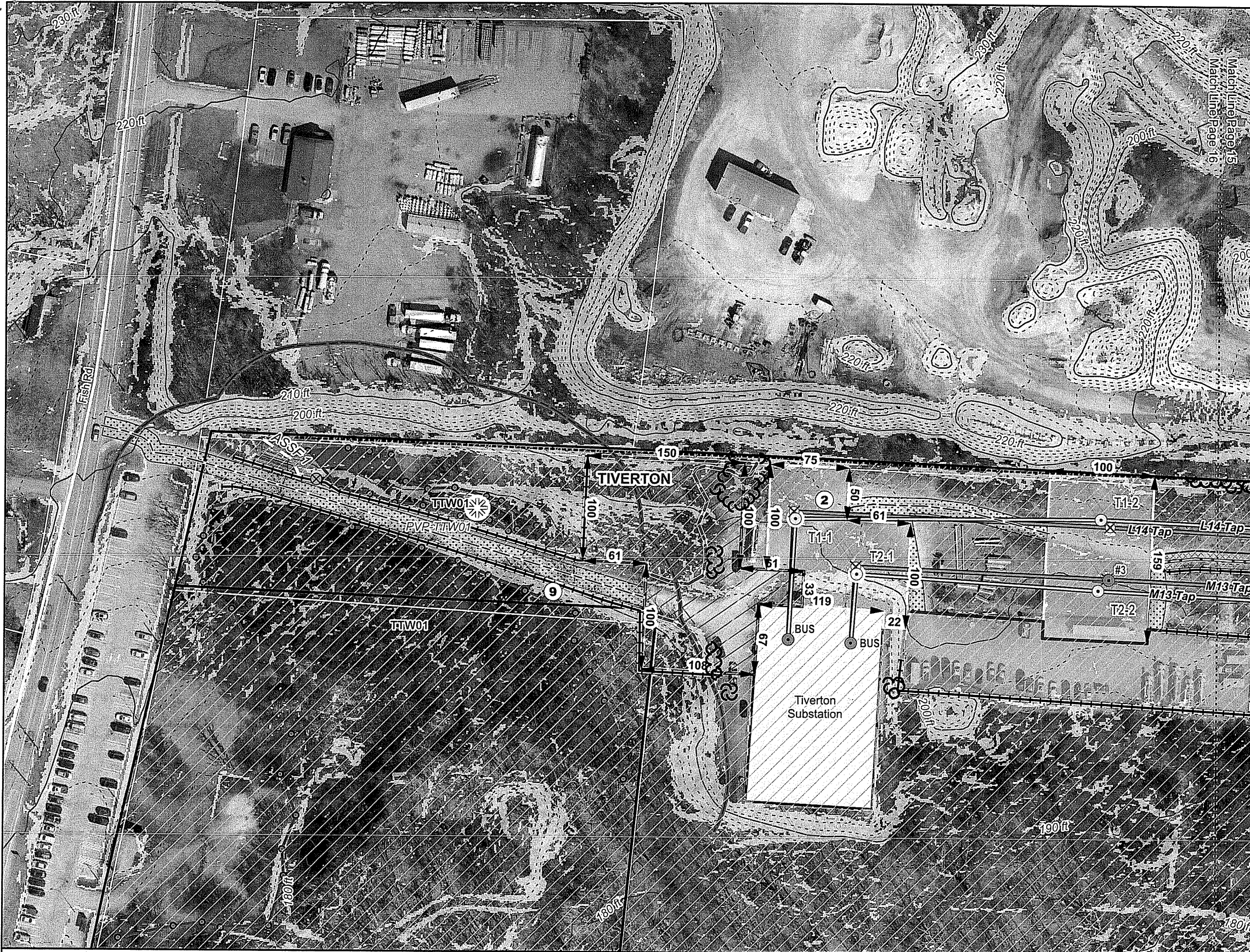
0 10 20 30 Meters
 0 25 50 75 100 Feet

Rhode Island Energy
 a PPL company
 Rhode Island Energy
 280 Melrose Street
 Providence, RI 02907

BSC GROUP
 BUILD | SUPPORT | CONNECT
 BSC Group, Inc
 1 Mercantile Street
 Suite 610
 Worcester, MA 01608

SOIL EROSION AND SEDIMENT CONTROL PLAN
 Tiverton Tap Rebuild Project
 Rhode Island Energy
 Town of Tiverton
 State of Rhode Island

SCALE AS NOTED	JOB NO. 249458	DATE: 10/28/2024	SHEET 16 of 17
----------------	----------------	------------------	----------------



- Existing Structure
- Proposed Structure
- ⊗ Structure To Be Removed
- ▭ Proposed Structure with Concrete Foundation
- ▬ Existing Transmission Line
- ▬ Proposed Transmission Line
- ▭ Substation or Switching Station
- ▭ RIE Owned Land
- ▬ No Improvements - Existing Access (15' Wide)
- ▬ Type R - Refresh/Cap Existing Sub-base
- ▭ Tree Trimming or Removal
- ▬ Perimeter Sediment Control
- ▭ Type R - Refresh/Cap Existing Sub-base
- ▭ No Improvements - Existing Access (15' Wide)
- ▬ Temporary Work Area - Stone - Cover with Top Soil and Stabilize Following Construction Work
- ▭ Pull Site - Mow Only and Matting
- ▭ Laydown Area
- ▬ Minor Road
- ▬ Index Contour (10' Interval)
- ▬ Contour (2' Interval)
- ▬ 0 - 15% Slope
- ▬ > 15% Slope
- ▭ Parcel Boundary
- ☀ Field Documented Potential Vernal Pool
- ⊗ Culvert
- Wetland Flag
- ▬ Stone Wall
- ▬ Wetland Border
- ▬ Area Subject to Storm Flowage (ASSF)
- ▬ Wetland Jurisdictional Area (100')
- ▭ Field Delineated Wetland
- ▭ Potential Vernal Pool
- ② Install temporary concrete wash station.
- ⑨ Perimeter Sediment Controls
- ▬ LIDAR Tree Line
- ▬ Field Verified Tree Line

RI DEPARTMENT OF ENVIRONMENTAL MANAGEMENT
 OFFICE OF WATER RESOURCES
 FRESHWATER WETLANDS PROGRAM

APPROVED WITH CONDITIONS AS
 SPECIFIED IN THE LETTER OF APPROVAL
 DATED: NOV 11 2024 FILE #: 24-0140

NO CHANGES ALLOWED WITHOUT PRIOR APPROVAL
 APPROVED PLANS MUST BE AT CONSTRUCTION SITE

REVISIONS:

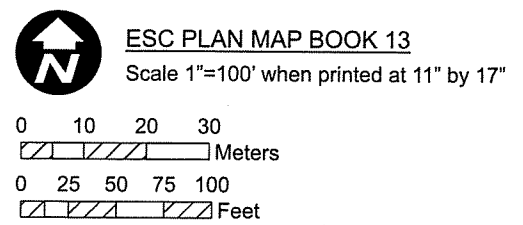
The project Limit of Disturbance (LOD) are comprised of the outer edge of all work pads, pull pads, grading areas, and road improvements within the right-of-way (ROW) shown on these plans.

Final determinations will be made in the field by Rhode Island Energy as to the extent of grading that is required for access roads and work pads, so as to minimize rock removal and earth disturbance.

POWER ENGINEERS
 POWER Engineers, Inc
 2 Hampshire Street Suite 301
 Foxborough, MA 02035

NOTES:
 SITE INFORMATION PROVIDED BY PPL ELECTRIC UTILITIES CORPORATION (2023); INCLUDING, BUT NOT LIMITED TO PROPERTY LINES, MUNICIPAL LINES, AND PROPERTY INFORMATION, AERIALS, AND CONTOURS, RECEIVED FROM RIGIS (HTTPS://WWW.RIGIS.ORG/ (2000-2023)) AND GOOGLE EARTH (2023). ALL INFORMATION IS APPROXIMATE.

CONTRACTOR SHALL NOT CONDUCT EARTH DISTURBANCE BEYOND THE LIMITS SHOWN ON THESE DRAWINGS WITHOUT PRIOR APPROVAL BY RI ENERGY CORPORATION'S REPRESENTATIVE RESPONSIBLE FOR EROSION & SEDIMENTATION CONTROL ON SITE. THE REVIEWING AGENCY SHALL BE NOTIFIED BY PPL ELECTRIC UTILITIES CORPORATION'S REPRESENTATIVE RESPONSIBLE FOR EROSION & SEDIMENTATION CONTROL ON SITE OF ANY CHANGES TO THE APPROVED PLAN PRIOR TO THE IMPLEMENTATION OF THOSE CHANGES.



Rhode Island Energy
 a PPL company
 Rhode Island Energy
 280 Melrose Street
 Providence, RI 02907

BSC GROUP
 BUILD | SUPPORT | CONNECT
 BSC Group, Inc
 1 Mercantile Street
 Suite 610
 Worcester, MA 01608
 OCT 30 2024

SOIL EROSION AND SEDIMENT CONTROL PLAN
 Tiverton Tap Rebuild Project
 Rhode Island Energy
 Town of Tiverton
 State of Rhode Island

SCALE AS NOTED	JOB NO. 249458	DATE: 10/28/2024	SHEET 17 of 17
----------------	----------------	------------------	----------------