

Industrial Road Stormwater Improvements

Industrial Road Cumberland, Rhode Island

RI DEPARTMENT OF ENVIRONMENTAL MANAGEMENT
OFFICE OF WATER RESOURCES
FRESHWATER WETLANDS PROGRAM
APPROVED WITH CONDITIONS AS
SPECIFIED IN THE LETTER OF APPROVAL
DATED: OCT 9 4 2024 FILE #: 24-0119
NO CHANGES ALLOWED WITHOUT PRIOR APPROVAL
APPROVED PLANS MUST BE AT CONSTRUCTION SITE

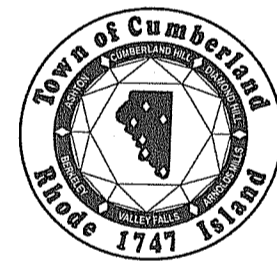
Andy Clapton

CIVIL ENGINEER:

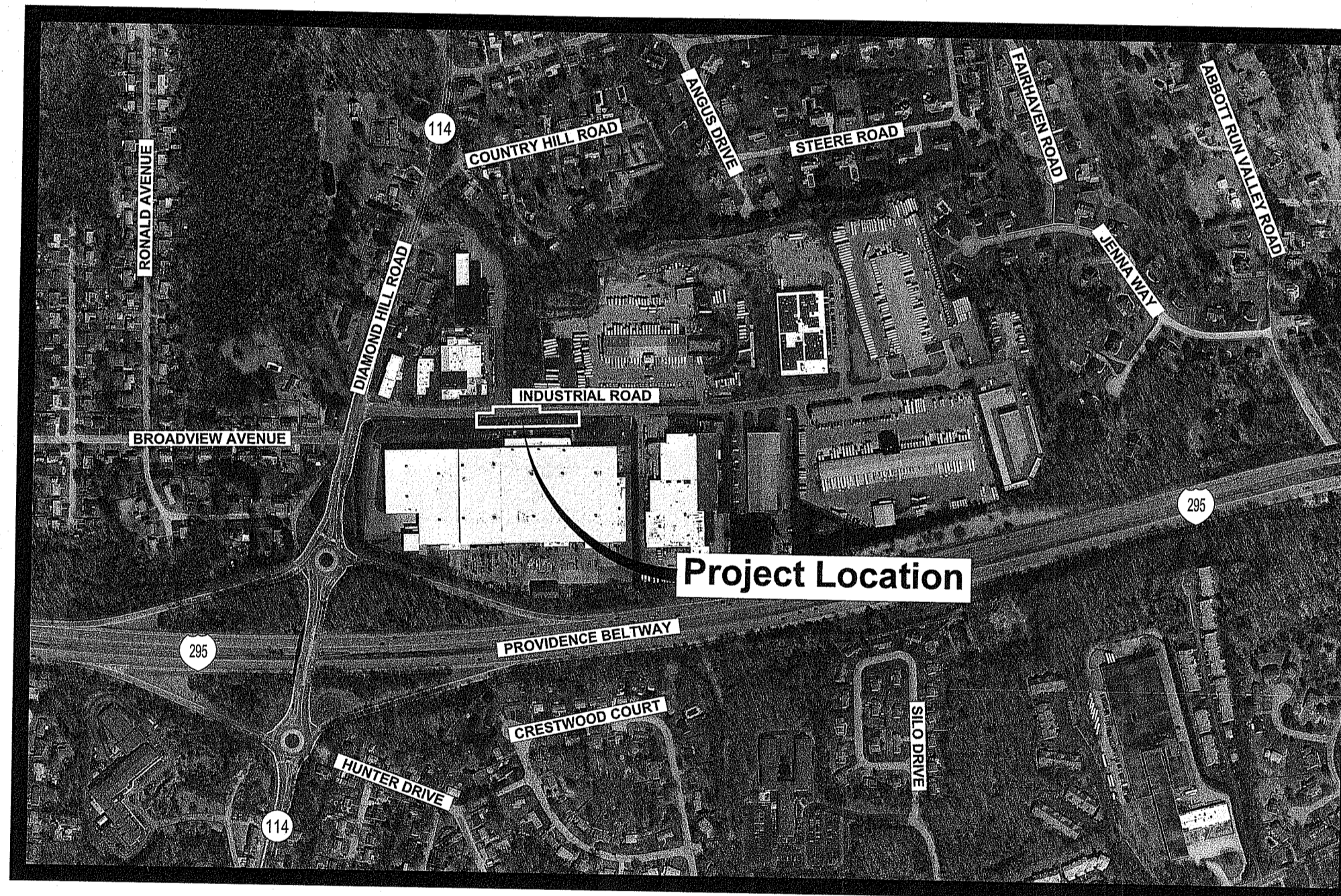


PARE CORPORATION
ENGINEERS - SCIENTISTS - PLANNERS
8 BLACKSTONE VALLEY PLACE LINCOLN, RI 02865 401-334-4100
10 LINCOLN ROAD, SUITE 210 FOWERS, MA 02035 508-949-1755
14 BOBALA ROAD, SUITE 3B HOLYOKE, MA 01040 413-507-3468

PREPARED FOR:



TOWN OF CUMBERLAND
45 BROAD STREET
CUMBERLAND, RHODE ISLAND 02864



Scale : N.T.S.

INDEX OF DRAWINGS

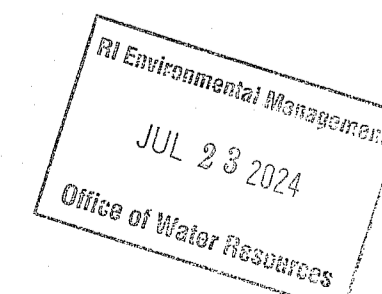
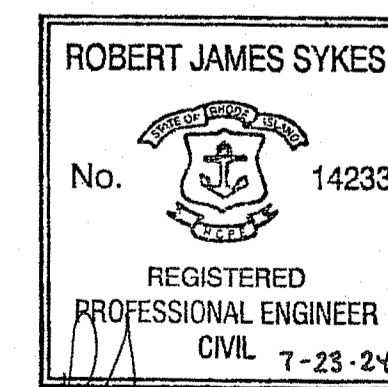
SHEET No.	DRAWING No.	DESCRIPTION
1	-	COVER SHEET
2	C0.1	NOTES
3	C0.2	LEGEND
4	C1.0	DEMOLITION AND SEDIMENT CONTROL PLAN
5	C2.0	GENERAL PLAN
6	C3.0	DRAINAGE PLAN
7 - 11	C4.1 - C4.5	DETAILS 1 - 5

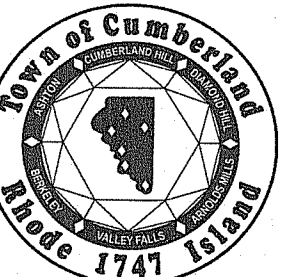
RI DEPARTMENT OF ENVIRONMENTAL MANAGEMENT
OFFICE OF WATER RESOURCES
FRESHWATER WETLANDS PROGRAM

NOTE PER DEM:

Kindly be advised that this Permit is not equivalent to a verification of the type or extent of freshwater wetlands on site

**PERMITTING
JULY 23, 2024**



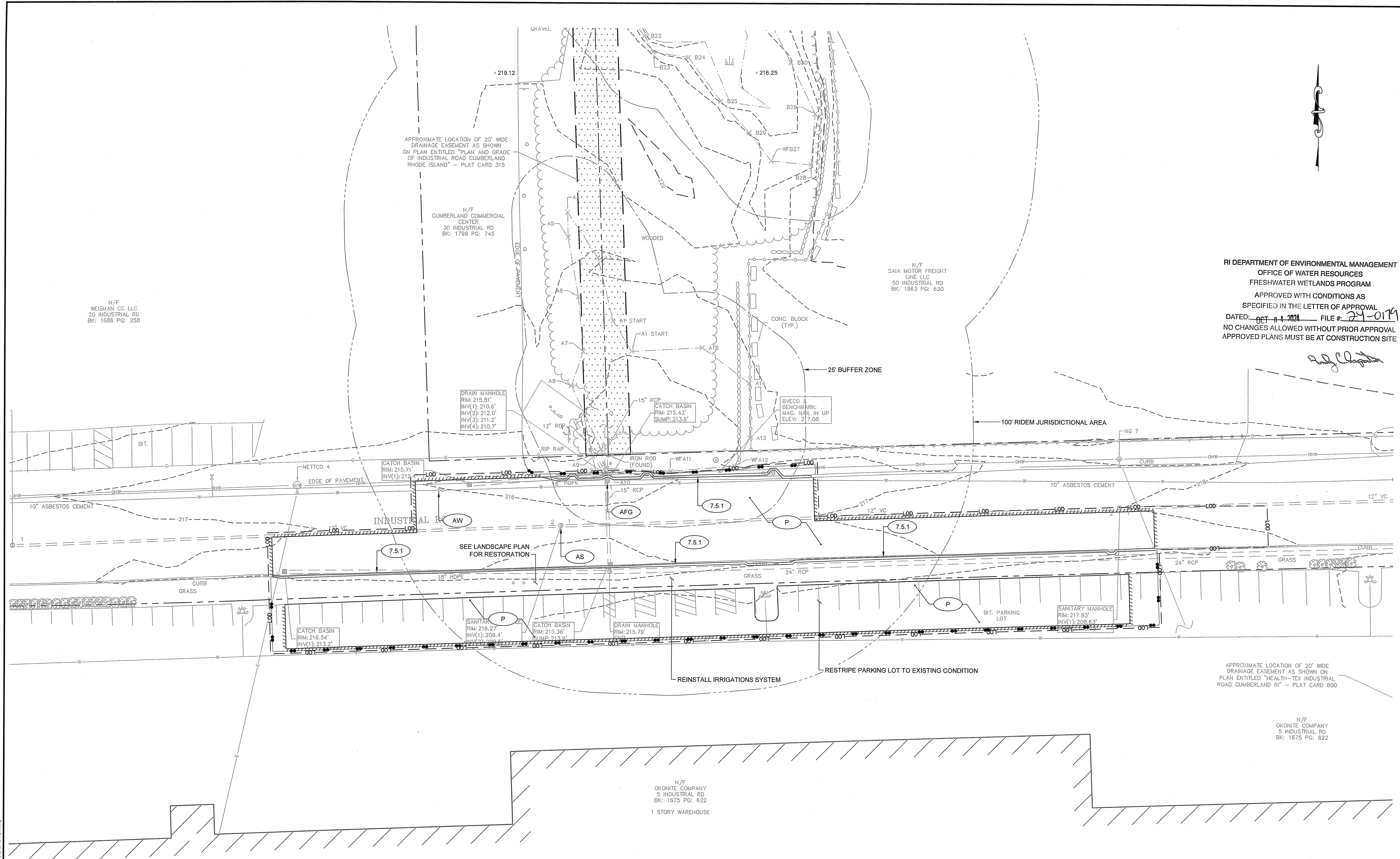


SCALE ADJUSTMENT GUIDE
0" 1"
BAR IS ONE INCH ON ORIGINAL DRAWING

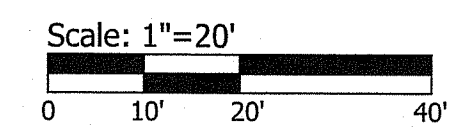
Town of Cumberland
Industrial Road Stormwater Improvements
Industrial Road
Cumberland, Rhode Island

RI DEPARTMENT OF ENVIRONMENTAL MANAGEMENT
OFFICE OF WATER RESOURCES
FRESHWATER WETLANDS PROGRAM
APPROVED WITH CONDITIONS AS
SPECIFIED IN THE LETTER OF APPROVAL
DATED: OCT 14 2024 FILE #: 24-0179
NO CHANGES ALLOWED WITHOUT PRIOR APPROVAL
APPROVED PLANS MUST BE AT CONSTRUCTION SITE

Randy Clouston



- NOTES:**
1. CONTRACTOR SHALL LOCATE ALL UTILITY WITHIN CONSTRUCTION LIMITS PRIOR TO EXCAVATION.
 2. CONTRACTOR TO MATCH EXISTING ROADWAY AND PARKING LOT SURFACE GRADES TO EXISTING CONDITION.
 3. CONTRACTOR TO MAINTAIN ACCESS TO 5 INDUSTRIAL ROAD PARKING LOT FOR THE DURATION OF CONSTRUCTION.



REVISIONS:

NO.	DATE	DESCRIPTION

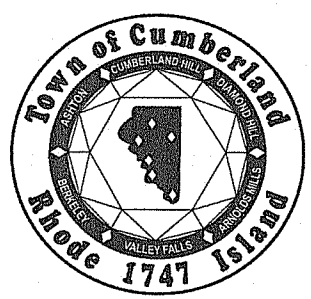
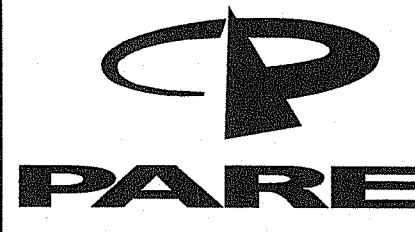
PROJECT NO.: 22167.00
DATE: JULY 23, 2024
SCALE: AS NOTED
DESIGNED BY: MC
CHECKED BY: RS
DRAWN BY: AWB
APPROVED BY: KMD
DRAWING TITLE:

GENERAL PLAN

DRAWING NO.: C2.0

SHEET NO. 5 OF 11

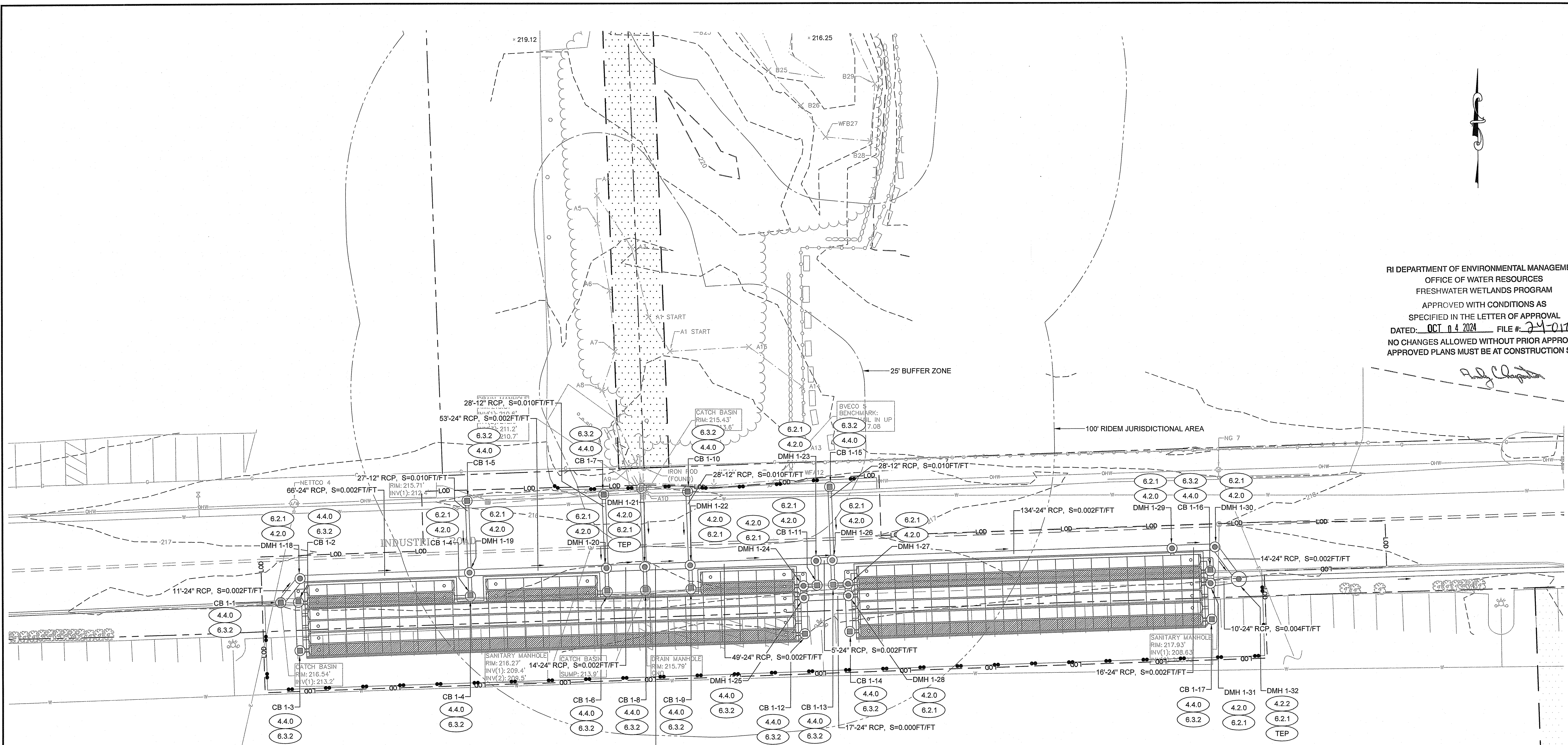
Z:\AR03\22 Job\22167.00 Cumberland - Industrial Rd Stormwater Imp - R\DWG\GENERAL PLAN.dwg



SCALE ADJUSTMENT GUIDE
 1" = 20'
 BAR IS ONE INCH ON ORIGINAL DRAWING

Town of Cumberland
Industrial Road Stormwater Improvements
 Industrial Road
 Cumberland, Rhode Island

RI DEPARTMENT OF ENVIRONMENTAL MANAGEMENT
 OFFICE OF WATER RESOURCES
 FRESHWATER WETLANDS PROGRAM
 APPROVED WITH CONDITIONS AS SPECIFIED IN THE LETTER OF APPROVAL
 DATED: OCT 14 2024 FILE #: 24-0179
 NO CHANGES ALLOWED WITHOUT PRIOR APPROVAL
 APPROVED PLANS MUST BE AT CONSTRUCTION SITE

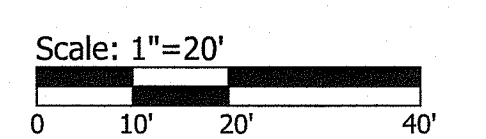


DRAIN INVERT TABLE				
STRUCTURE	STATION	RIM (FT)	INV. IN (FT)	INV. OUT (FT)
CB 1-1	104+14, 17RT	216.59	213.40 W 18"	210.92 NE 24"
CB 1-2	104+21, 18RT	216.42	211.12 S 24" 211.12 N 24" 212.12 E 12"	
CB 1-3	104+21, 37RT	217.48	211.12 N 24" 212.12 E 12"	
CB 1-4	104+90, 18RT	216.13	211.12 N 12" 212.12 W 12" 212.12 S 12"	
CB 1-5	104+90, -20LT	215.90	212.60 S 12"	
CB 1-6	105+44, 18RT	215.53	212.12 W 12" 212.12 S 12" 211.12 N 12"	
CB 1-7	105+44, -21LT	215.66	212.28 S 12"	
CB 1-8	105+59, 18RT	215.43	212.00 N 12"	

DRAIN INVERT TABLE				
STRUCTURE	STATION	RIM (FT)	INV. IN (FT)	INV. OUT (FT)
CB 1-9	105+77, 18RT	215.93		212.12 E 12" 212.12 S 12" 211.12 N 12"
CB 1-10	105+77, -21LT	215.97		212.43 S 12"
CB 1-11	106+28, 18RT	216.69		211.12 N 12" 212.12 W 12"
CB 1-12	106+22, 37RT	218.02	210.10 SW 4"	210.10 N 24" 210.85 W 12"
CB 1-13	106+34, 18RT	216.74		211.12 N 12" 212.12 E 12"
CB 1-14	106+40, 18RT	218.09		210.10 N 24" 210.85 E 12"
CB 1-15	106+34, -21LT	216.58		213.03 S 12"
CB 1-16	107+84, 18RT	217.51		210.10 S 24" 210.10 N 24" 210.85 W 12"

DRAIN INVERT TABLE				
STRUCTURE	STATION	RIM (FT)	INV. IN (FT)	INV. OUT (FT)
CB 1-17	107+84, 37RT	218.33	210.10 SW 4"	210.10 N 24" 212.12 W 12"
DMH 1-18	104+22, 8RT	216.71	210.90 SW 24"	210.90 E 24"
DMH 1-19	104+90, 8RT	216.36	210.75 W 24" 212.31 N 12" 211.07 S 12"	210.75 E 24"
DMH 1-20	105+44, 8RT	215.95	210.64 W 24" 211.99 N 12" 211.07 S 12"	210.64 E 24"
DMH 1-21	105+59, 8RT	215.89	210.54 N 15" 210.61 W 24" 211.95 S 12"	210.61 E 24"
DMH 1-22	105+77, 8RT	216.14	210.57 W 24" 212.14 N 12" 211.07 S 12"	210.57 E 24"
DMH 1-23	106+28, 8RT	216.58	210.48 W 24" 211.07 S 12"	210.48 E 24"
DMH 1-24	106+22, 18RT	216.66	212.12 E 12"	210.10 S 24" 210.10 N 24" 210.85 W 12"

DRAIN INVERT TABLE				
STRUCTURE	STATION	RIM (FT)	INV. IN (FT)	INV. OUT (FT)
DMH 1-25	106+22, 23RT	217.36	210.10 NW 4"	210.10 E 24" 210.10 S 24" 210.10 N 24" 210.85 W 12"
DMH 1-26	106+34, 8RT	216.66	210.47 W 24" 211.07 S 12" 212.74 N 12"	210.44 E 24"
DMH 1-27	106+40, 18RT	216.76	212.08 W 12"	210.10 S 24" 210.10 N 24"
DMH 1-28	106+40, 23RT	217.48	210.10 W 24"	210.10 S 24" 210.10 NE 4" 210.85 E 12"
DMH 1-29	107+69, 8RT	217.55	210.15 W 24"	210.15 E 24" 212.12 S 12"
DMH 1-30	107+86, 8RT	217.66	210.11 W 24"	210.10 SE 24"
DMH 1-31	107+84, 22RT	218.09	210.10 N 24" 210.10 S 24" 210.10 NW 4" 210.85 W 12"	210.10 E 24"
DMH 1-32	107+95, 21RT	218.03	210.06 NW 24" 210.06 W 24"	210.06 E 24"

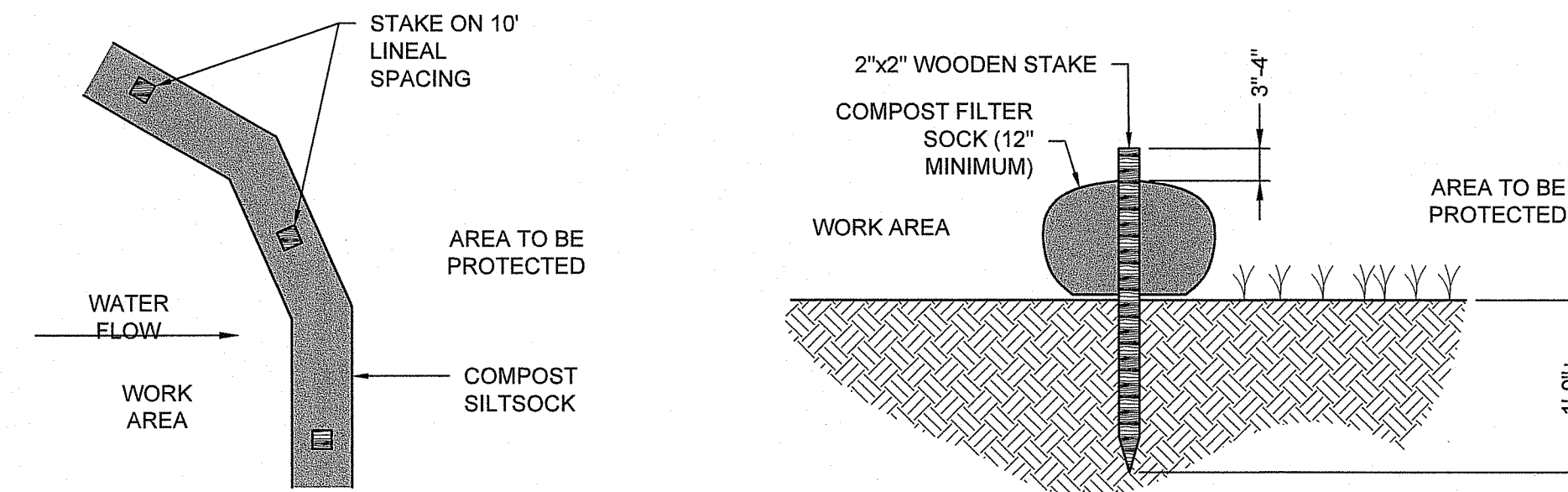


REVISIONS:

PROJECT NO.: 22167.00
 DATE: JULY 23, 2024
 SCALE: AS NOTED
 DESIGNED BY: MC
 CHECKED BY: RS
 DRAWN BY: AWB
 APPROVED BY: KMD
 DRAWING TITLE:

DRAINAGE PLAN

DRAWING NO.: C3.0
 SHEET NO. 6 OF 11



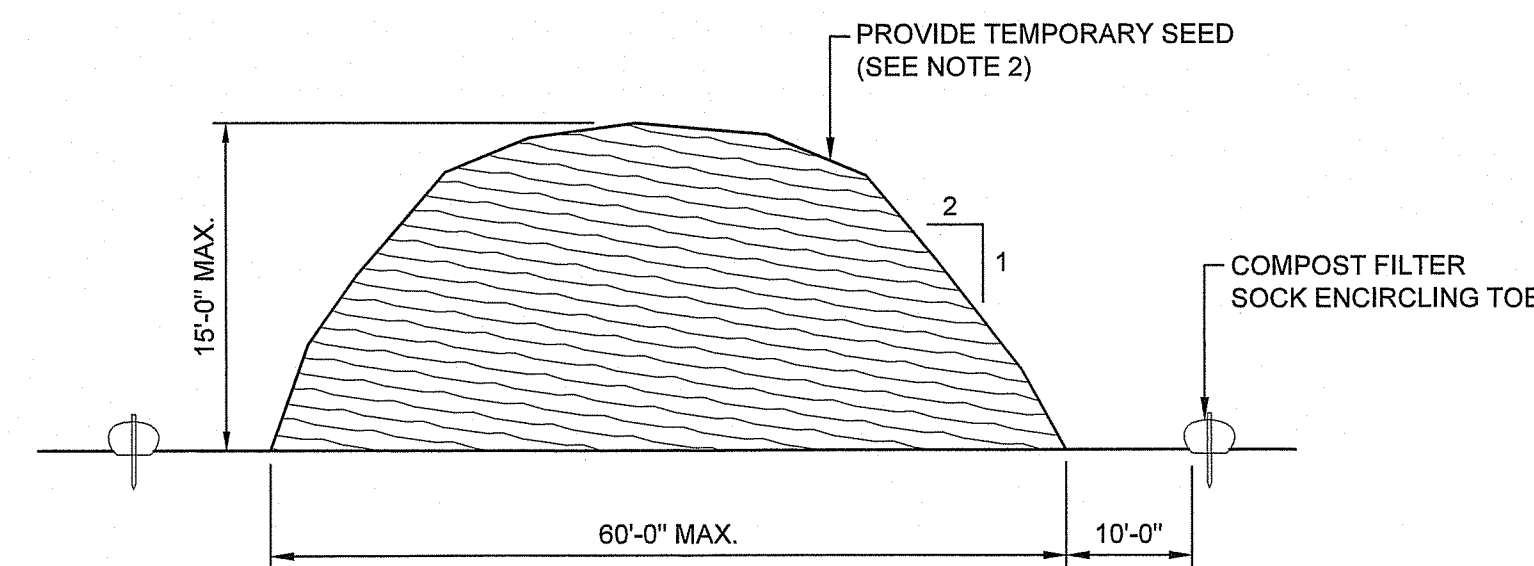
NOTES:

1. COMPOST/ SOIL/ ROCK/ SEED FILL TO MEET APPLICATION REQUIREMENTS.
2. COMPOST MATERIAL TO BE REMOVED OR DISPERSED ON SITE AS DETERMINED BY ENGINEER.
3. IF SOCK NETTING MUST BE JOINED, FIT BEGINNING OF NEW SOCK OVER END OF OLD SOCK, OVERLAPPING BY 2 FEET AND STACK OVERLAP. IF SOCK NETTING IS NOT JOINED, OVERLAP OLD SOCK WITH NEW ONE BY MINIMUM OF 2 FEET.

RI DEPARTMENT OF ENVIRONMENTAL MANAGEMENT
OFFICE OF WATER RESOURCES
FRESHWATER WETLANDS PROGRAM
APPROVED WITH CONDITIONS AS SPECIFIED IN THE LETTER OF APPROVAL
DATED: OCT 04 2024 FILE #: 24-0179
NO CHANGES ALLOWED WITHOUT PRIOR APPROVAL
APPROVED PLANS MUST BE AT CONSTRUCTION SITE

Andy Clouston

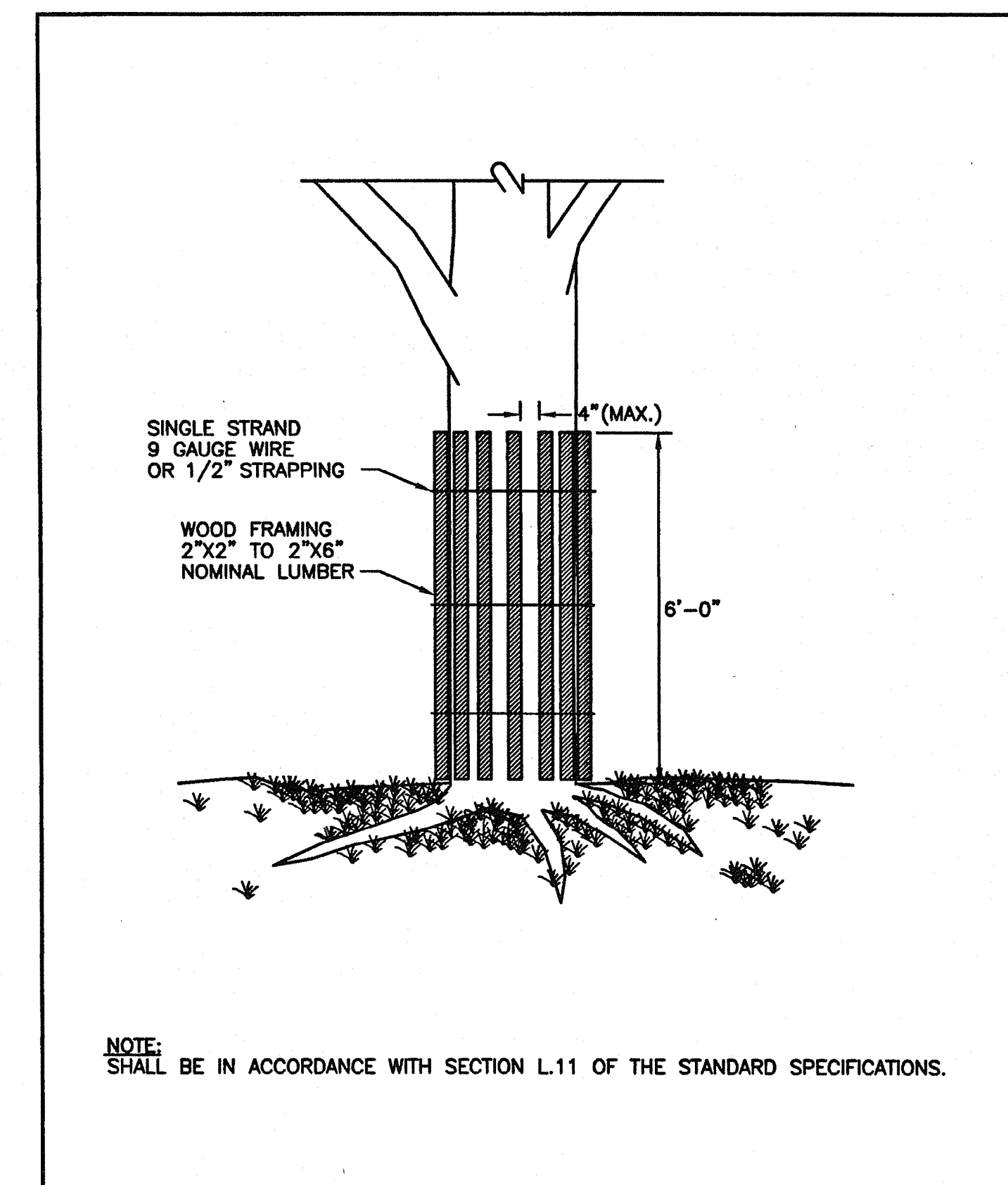
COMPOST FILTER SOCK DETAIL
NOT TO SCALE



NOTES:

1. STOCKPILE AREA SHALL NOT EXCEED SPECIFIED DIMENSIONS WITHOUT APPROVAL FROM ENGINEER.
2. STOCKPILED ERODIBLE MATERIAL THAT WILL NOT BE USED FOR GREATER THAN 14 DAYS SHALL BE STABILIZED WITH TEMPORARY SEED IMMEDIATELY FOLLOWING PLACEMENT. USE RIDOT STD. M.18.10.5 SEED MIX.

ERODIBLE MATERIAL STOCKPILE
NOT TO SCALE



RHODE ISLAND DEPARTMENT OF TRANSPORTATION

REVISIONS			R.I. STANDARD 51.1.0
NO.	BY	DATE	

TREE PROTECTION DEVICE

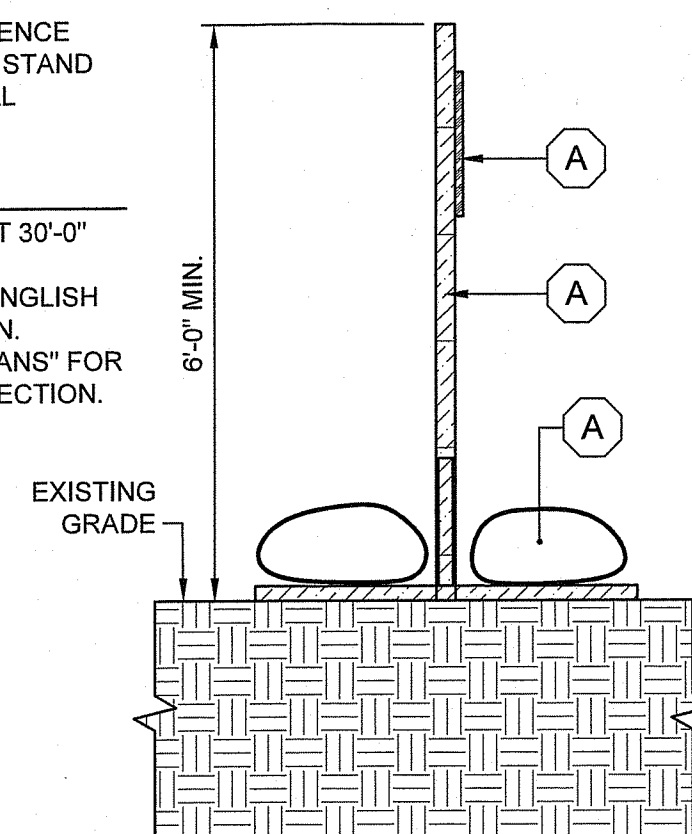
James R. Gagliardi Chief Engineer TRANSPORTATION
Edward P. Berkebile Chief Design Engineer TRANSPORTATION
JUNE 15, 1998 ISSUE DATE

LEGEND

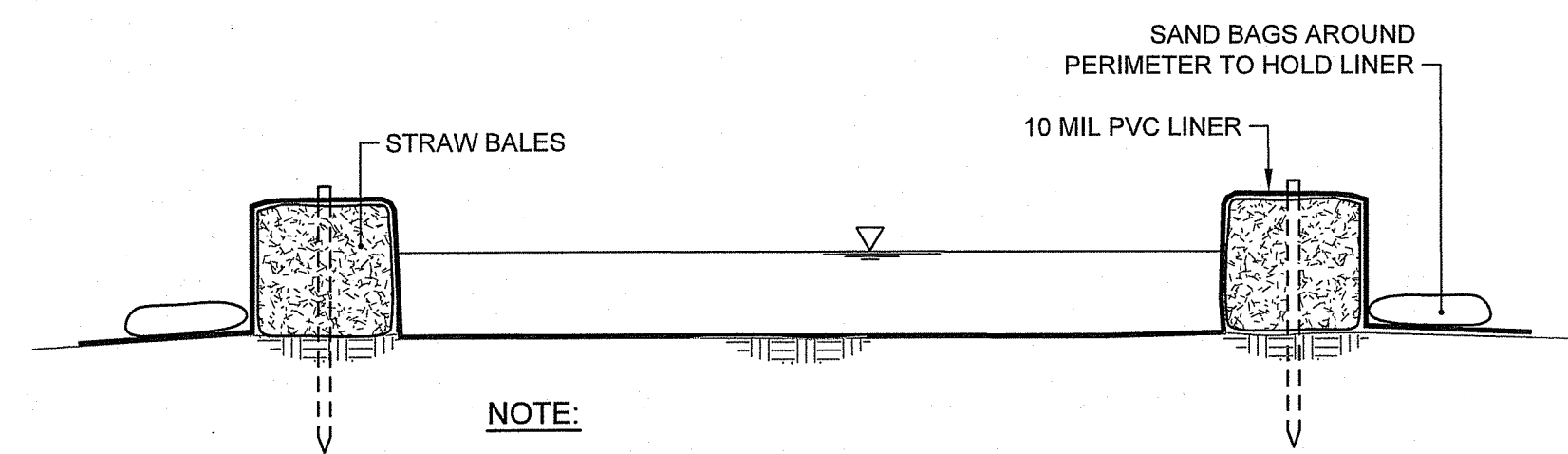
1. SIGN - "KEEP OUT: SITE PROTECTION ZONE. PENALTIES ASSESSED FOR DAMAGE TO TREES."
2. REMOVABLE SECTION OF FENCE WITH FENCE POSTS SET IN STAND
3. 40LB SAND BAGS, OR EQUAL

NOTES

- A. SIGNS SHALL BE PLACED AT 30'-0" INTERVALS.
- B. SIGNS SHALL HAVE BOTH ENGLISH AND SPANISH TRANSLATION.
- C. REFER TO "DEMOLITION PLANS" FOR LOCATIONS OF TREE PROTECTION.



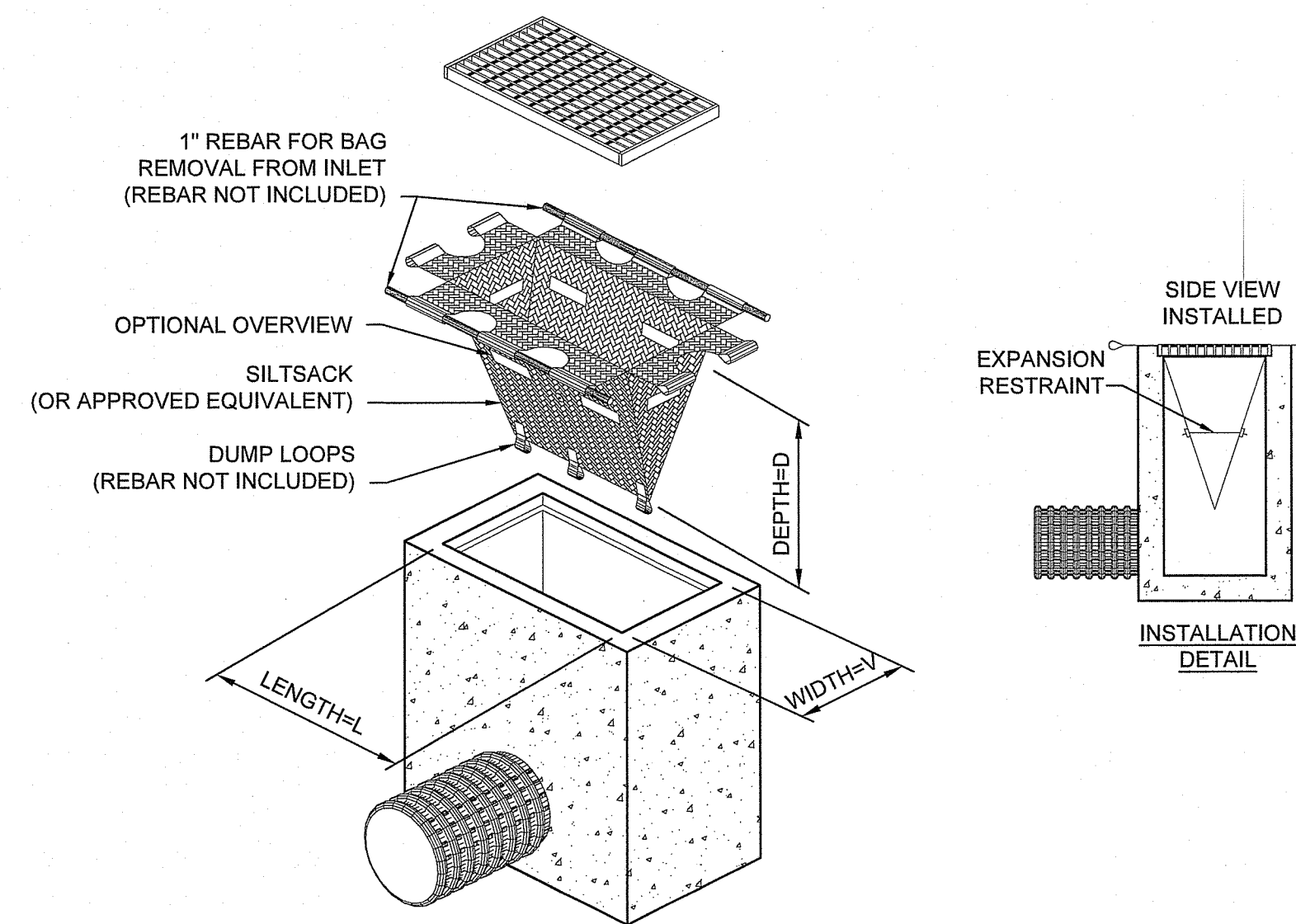
DRIPLINE TREE PROTECTION FENCE - SURFACE
NOT TO SCALE



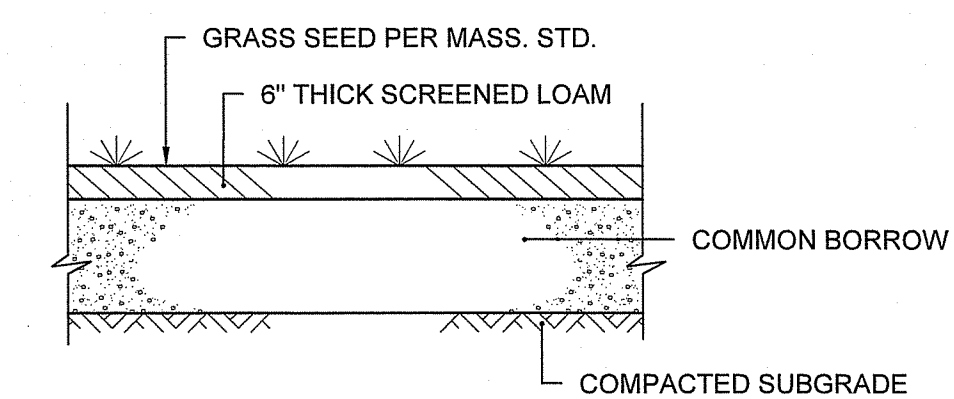
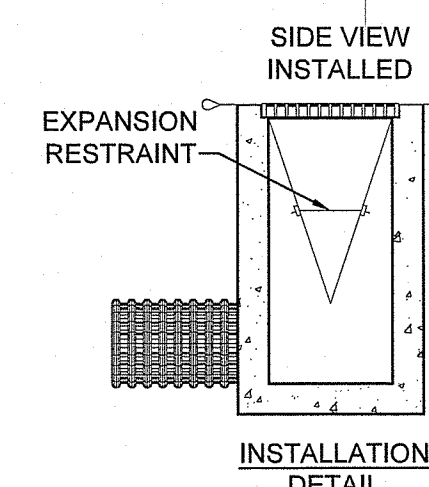
NOTE:

1. MINIMUM PLAN DIMENSIONS SHALL BE 10' x 10'.

CONCRETE WASHOUT FACILITY
NOT TO SCALE



TEMPORARY INLET PROTECTION
NOT TO SCALE



LOAM & SEED DETAIL
NOT TO SCALE

REVISIONS:

NO.	BY	DATE

PROJECT NO.: 22167.00
DATE: JULY 23, 2024
SCALE: AS NOTED
DESIGNED BY: MC
CHECKED BY: RS
DRAWN BY: AWB
APPROVED BY: KMD
DRAWING TITLE:

DETAILS 1

DRAWING NO.:

C4.1

SHEET NO. 7 OF 11

