

# Route 7 Safe Crossing and Pedestrian Path Project



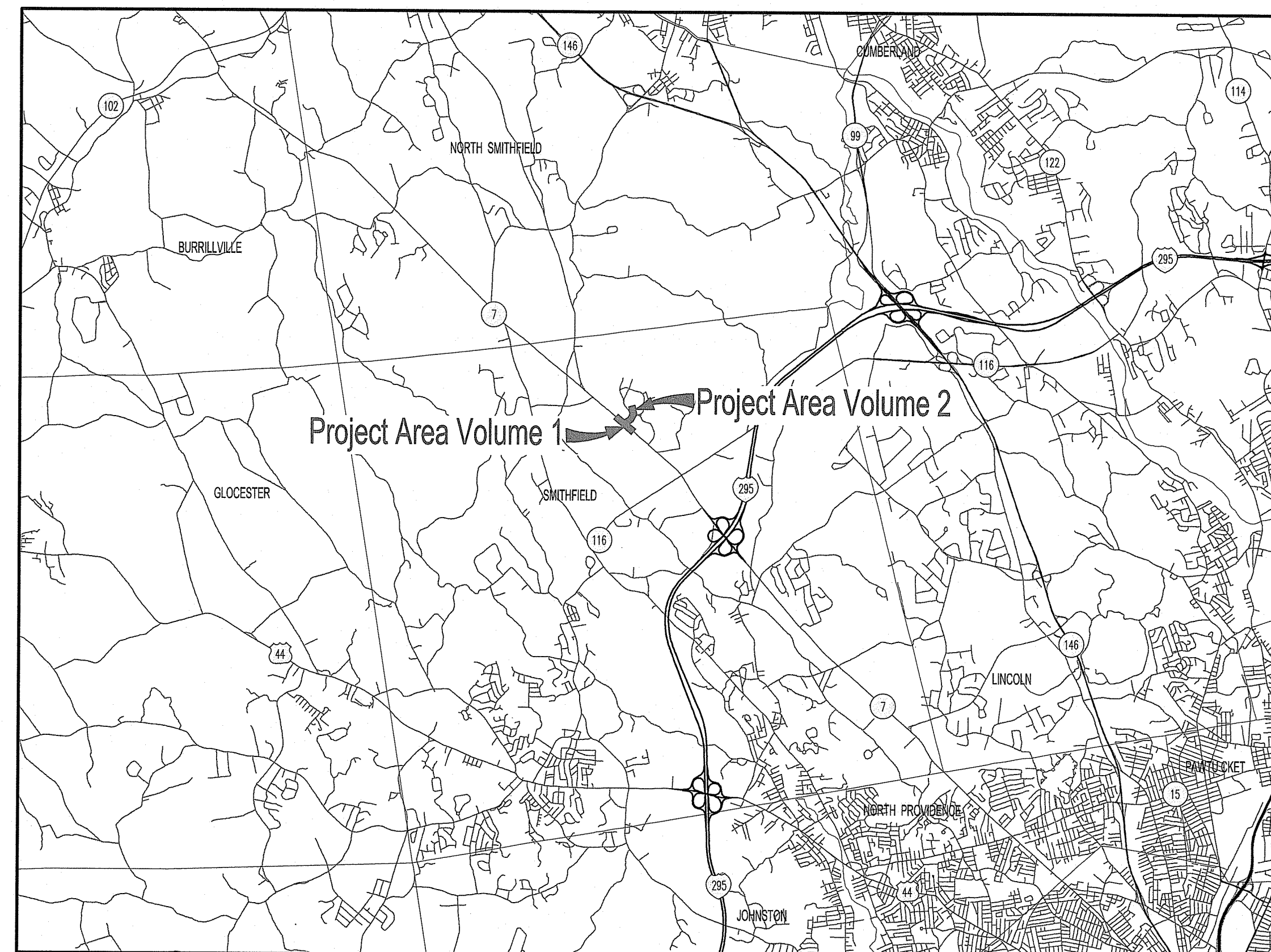
## Smithfield, Rhode Island

### INDEX OF DRAWINGS

SHEET No.	DRAWING No.	SHEET TITLE
1		COVER SHEET
<b>VOLUME 1 - INTERSECTION IMPROVEMENTS</b>		
2	C1.1	NOTES AND LEGEND
3	C1.2	TYPICAL SECTIONS
4 - 6	C2.1 - C2.3	GENERAL PLAN NO. 1 TO 3
7 - 9	C3.1 - C3.3	GRADING, DRAINAGE & UTILITY PLAN NO. 1 TO 3
10 - 12	C4.1 - C4.3	LOCATION PLAN NO. 1 TO 3
<del>13 - 15</del>	<del>C5.1 - C5.3</del>	<del>SIGNING &amp; STRIPING PLAN NO. 1 TO 3</del>
<del>16</del>	<del>C6.1</del>	<del>TRAFFIC SIGNAL PLAN</del>
<del>17 - 22</del>	<del>C7.1 - C7.6</del>	<del>TEMPORARY TRAFFIC CONTROL PLAN NO. 1 TO 6</del>
23, 24	C8.1, C8.2	DETAILS NO. 1 AND 2
25	E1.0	ELECTRICAL SITE LIGHTING
26	E2.0	ELECTRICAL LEGEND AND DETAILS
27 - 29	L1.1 - L1.3	LANDSCAPE PLAN NO. 1 TO 3
30	L2.1	LANDSCAPE DETAILS

### VOLUME 2 - WALKING PATH

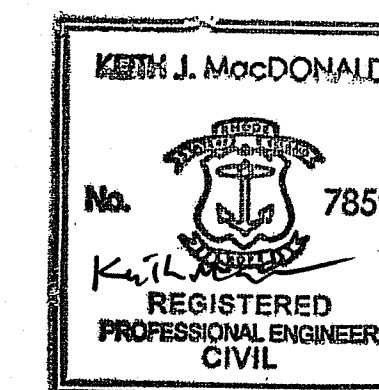
2	C1.1	NOTES AND LEGEND
3	C1.2	TYPICAL SECTIONS
4, 5	C2.1, C2.2	GENERAL, GRADING, DRAINAGE & UTILITY PLAN NO. 1 AND NO. 2
6 - 8	C3.1 - C3.3	PROFILE NO. 1 TO 3
9	C4.1	DETAILS
10, 11	E1.0, E2.0	ELECTRICAL SITE LIGHTING NO. 1 AND 2
12	E3.0	ELECTRICAL LEGEND AND DETAILS



Prepared For:

Bryant University  
1150 Douglas Pike  
Smithfield, RI 02917

RIDEM SUBMISSION  
AUGUST 2024



8-7-2024

RI DEPARTMENT OF ENVIRONMENTAL MANAGEMENT  
OFFICE OF WATER RESOURCES  
FRESHWATER WETLANDS PROGRAM

NOTE PER DEM:

Kindly be advised that this Permit is not equivalent to a verification of the type or extent of freshwater wetlands on site

RI DEPARTMENT OF ENVIRONMENTAL MANAGEMENT  
OFFICE OF WATER RESOURCES  
FRESHWATER WETLANDS PROGRAM

APPROVED WITH CONDITIONS AS

RI Environmental Management Office of Water Resources  
SPECIFIED IN THE LETTER OF APPROVAL  
DATED: SEP 19 2024 FILE #: 24-0191  
NO CHANGES ALLOWED WITHOUT PRIOR APPROVAL  
APPROVED PLANS MUST BE AT CONSTRUCTION SITE

Prepared By:



PARE CORPORATION  
ENGINEERS - SCIENTISTS - PLANNERS

8 BLACKSTONE VALLEY PLACE LINCOLN, RI 02885 401-334-4100  
10 LINCOLN ROAD, SUITE 210 FOKSBORO, MA 02835 508-243-1755  
14 BOBAILA ROAD, SUITE 28 HOLYOKE, MA 01940 413-507-3498

























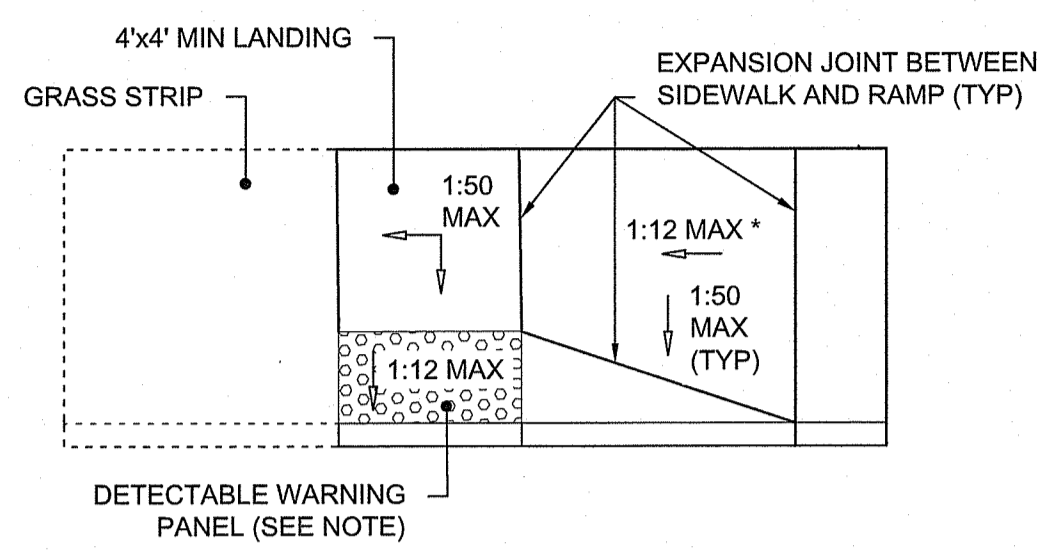
REVISIONS:

PROJECT NO.: 23189.00  
DATE: AUGUST 2024  
SCALE: AS NOTED  
DESIGNED BY:  
CHECKED BY:  
DRAWN BY:  
APPROVED BY:  
DRAWING TITLE:

DETAILS NO. 1

VOLUME 1  
INTERSECTION IMPROVEMENTS  
DRAWING NO.:

C8.1  
SHEET NO. 28 OF 32



NOTES:

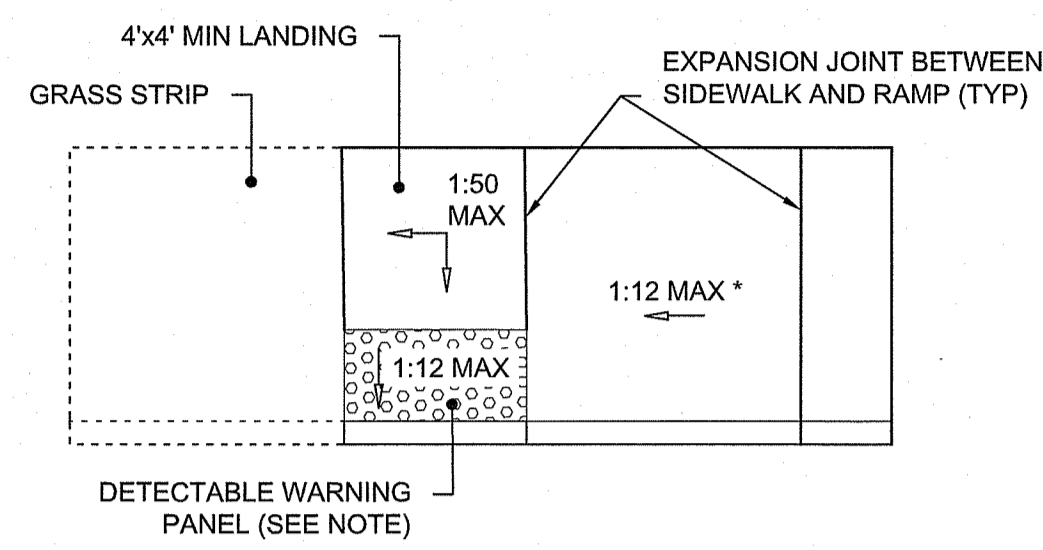
\* TRANSITION SIDEWALK LENGTH PER RIDOT STANDARD 43.3.0 ROADWAY PROFILE GRADE

LENGTH OF LANDING (4' MIN)  
DETECTABLE WARNING PANELS 0.5' MIN FROM EDGE OF PAVEMENT

DETECTABLE WARNING PANELS ARE REQUIRED TO BE CONSTRUCTED ON ALL PROPOSED PEDESTRIAN CURB RAMPS AND ARE TO BE INSTALLED IN ACCORDANCE WITH RIDOT CONSTRUCTION STANDARD 48.1.0

PEDESTRIAN CURB RAMP HAS THE SAME INSTALLATION WHEN THE GRASS STRIP IS ON THE OPPOSITE SIDE.

PCR XX PEDESTRIAN CURB RAMP - TYPE 1  
NOT TO SCALE



NOTES:

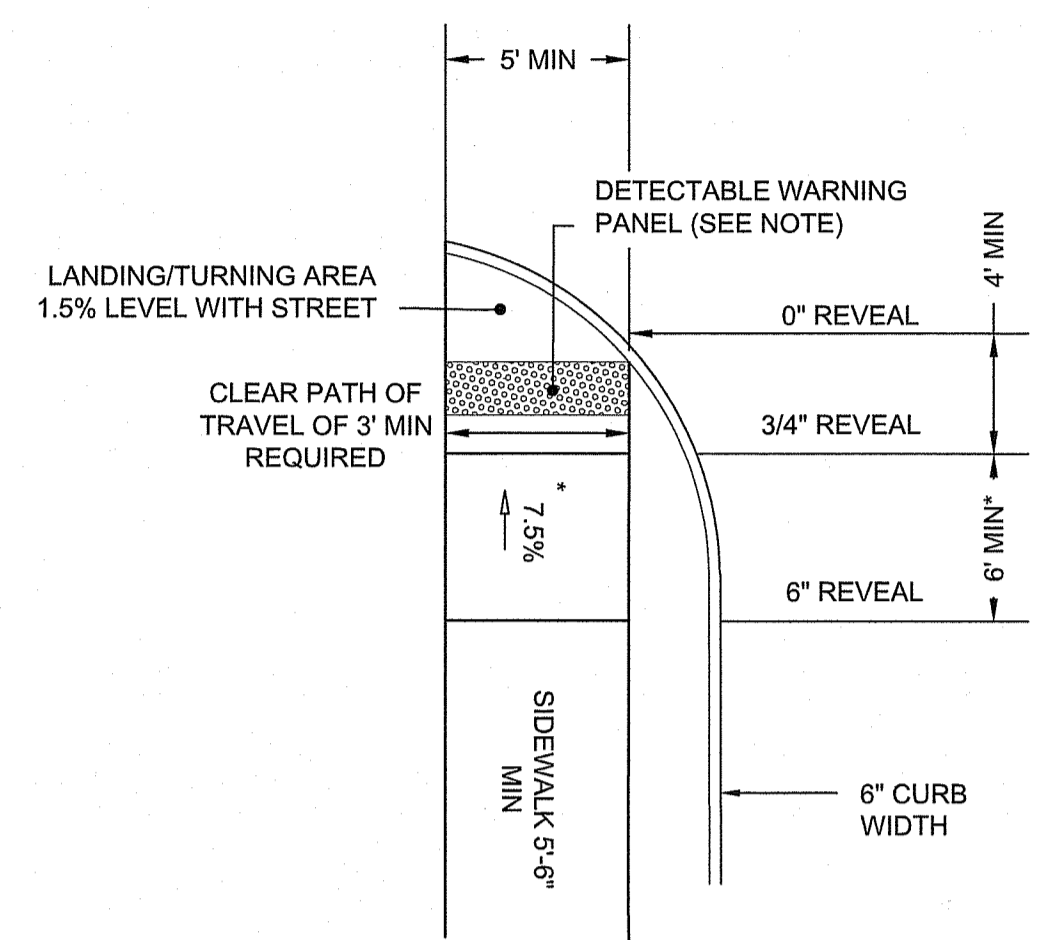
\* TRANSITION SIDEWALK LENGTH PER RIDOT STANDARD 43.3.0 ROADWAY PROFILE GRADE

LENGTH OF LANDING (4' MIN)  
DETECTABLE WARNING PANELS 0.5' MIN FROM EDGE OF PAVEMENT

DETECTABLE WARNING PANELS ARE REQUIRED TO BE CONSTRUCTED ON ALL PROPOSED PEDESTRIAN CURB RAMPS AND ARE TO BE INSTALLED IN ACCORDANCE WITH RIDOT CONSTRUCTION STANDARD 48.1.0

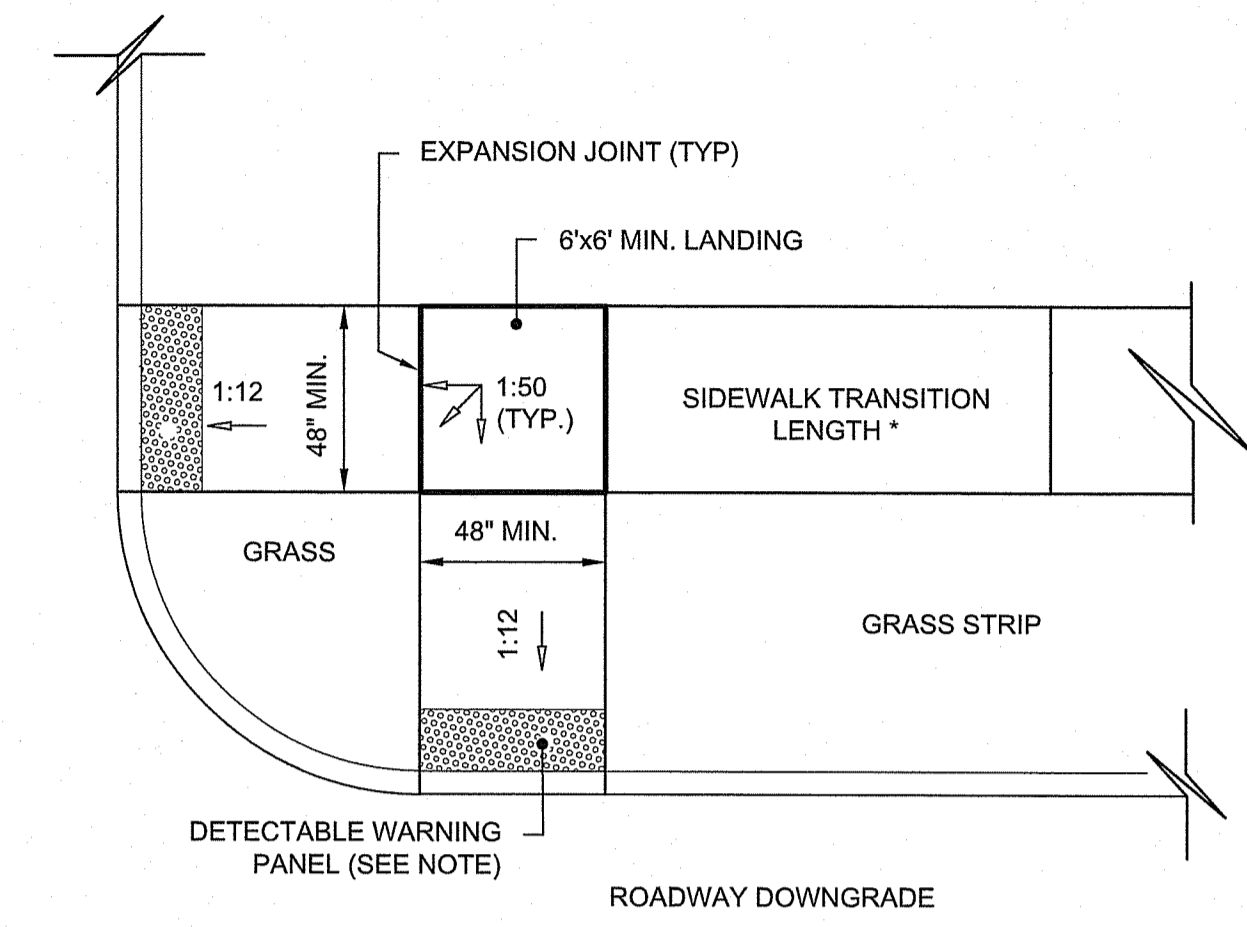
PEDESTRIAN CURB RAMP HAS THE SAME INSTALLATION WHEN THE GRASS STRIP IS ON THE OPPOSITE SIDE.

PCR X-X PEDESTRIAN CURB RAMP - TYPE 2  
NOT TO SCALE



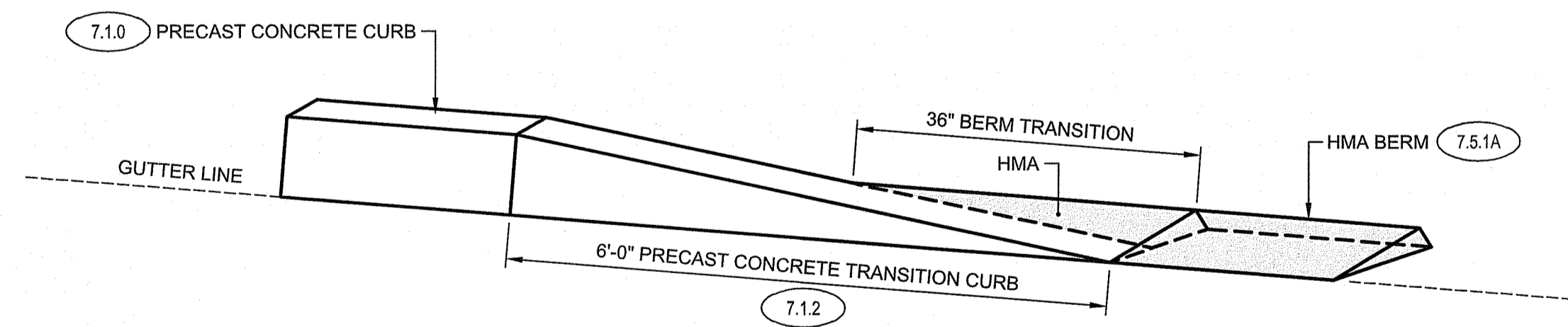
\* TRANSITION SIDEWALK LENGTH PER RIDOT STANDARD 43.3.0 ROADWAY PROFILE GRADE

PCR X-X PEDESTRIAN CURB RAMP - TYPE 3  
NOT TO SCALE

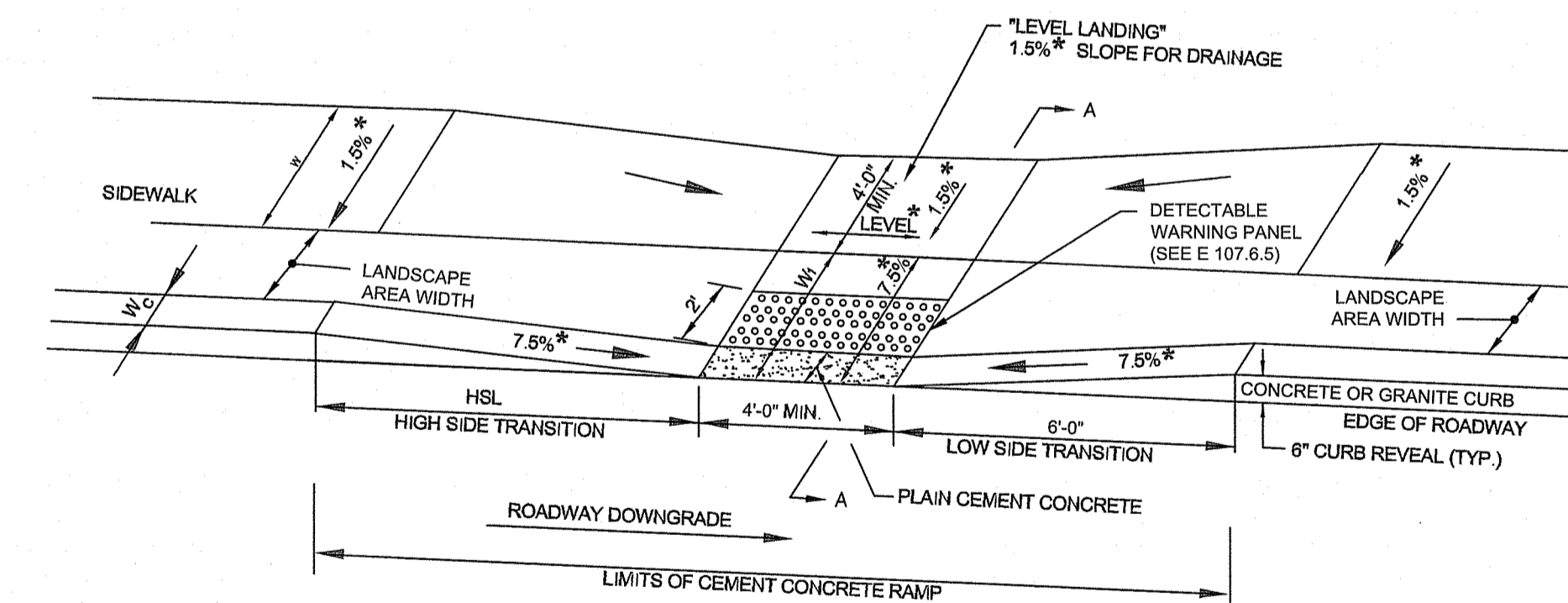


\* TRANSITION SIDEWALK LENGTH PER RIDOT STANDARD 43.3.0 ROADWAY PROFILE GRADE

PCR X-X PEDESTRIAN CURB RAMP - TYPE 4  
NOT TO SCALE

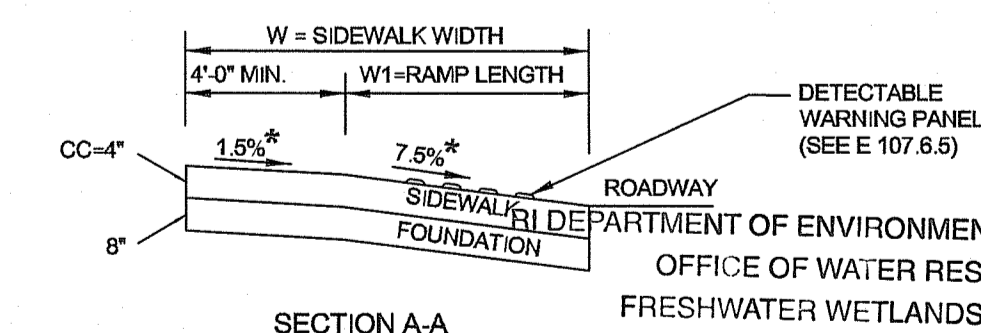


BTC HMA BERM TRANSITION TO CURB  
NOT TO SCALE



LEGEND

HSL = HIGH SIDE TRANSITION LENGTH (SEE 43.3.0)  
W = SIDEWALK WIDTH  
W<sub>C</sub> = CURB WIDTH  
W<sub>1</sub> = PERPENDICULAR RAMP LENGTH  
CC = CEMENT CONCRETE  
\* = TOLERANCE FOR CONSTRUCTION ±0.5%  
USABLE SIDEWALK WIDTH PER AAB = W-W<sub>C</sub>  
RAMP LENGTH, W<sub>1</sub> = W-4'-0" MIN



43.3.2M WHEELCHAIR RAMP FOR NARROW SIDEWALK MODIFIED  
NOT TO SCALE

OFFICE OF ENVIRONMENTAL MANAGEMENT  
OFFICE OF WATER RESOURCES  
FRESHWATER WETLANDS PROGRAM  
APPROVED WITH CONDITIONS AS  
SPECIFIED IN THE LETTER OF APPROVAL  
DATED: SEP 19 2024 FILE #:  
NO CHANGES ALLOWED WITHOUT PRIOR APPROVAL  
APPROVED PLANS MUST BE AT CONSTRUCTION SITE

*Signature*

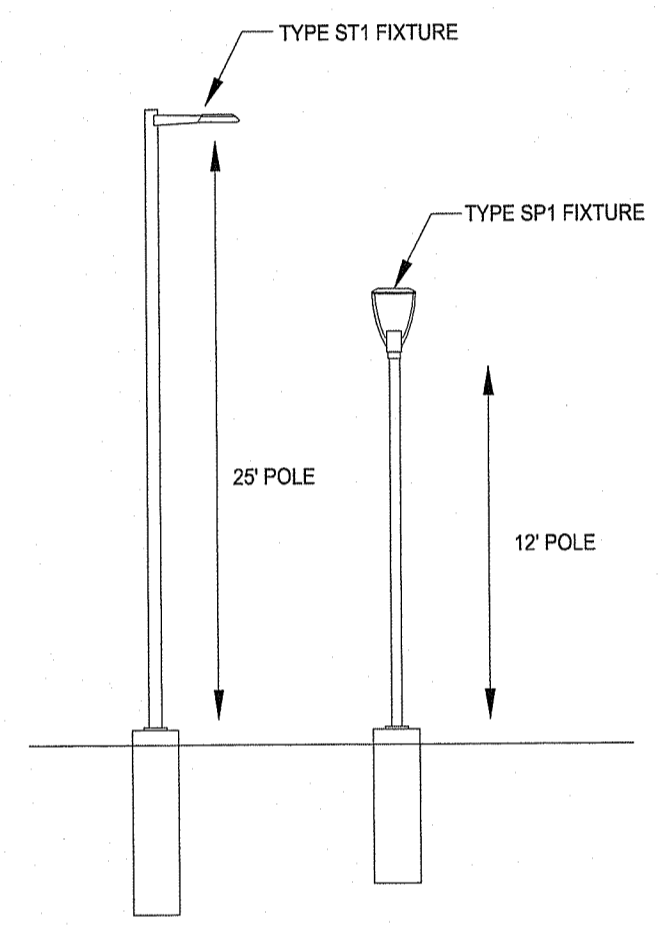




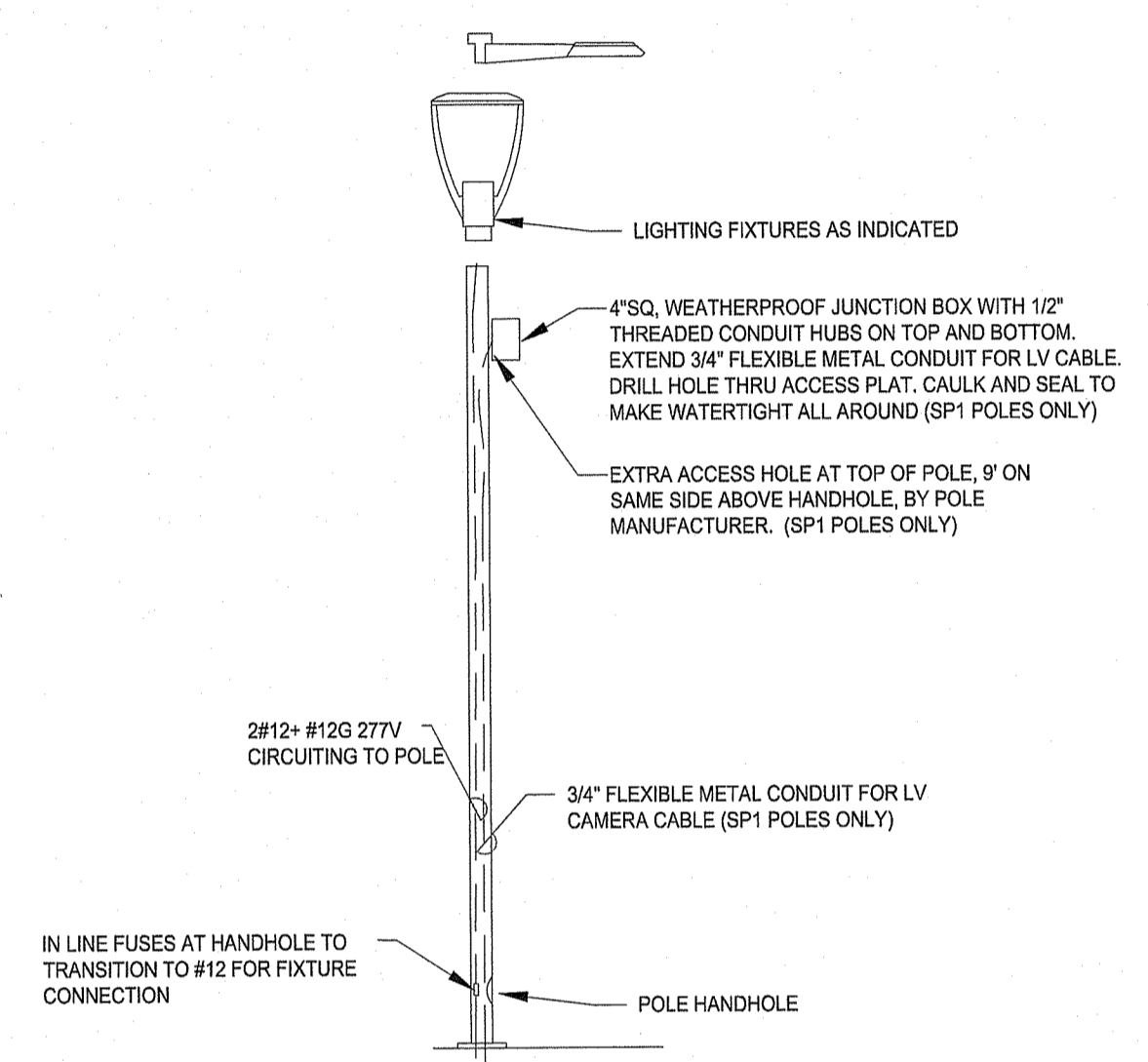
LIGHTING FIXTURE SCHEDULE										
FIXTURE TYPE	MANUFACTURER	CATALOG	DESCRIPTION	MOUNTING	LAMPS	CCT (K)	LUMEN	VOLTS	CONN. WATTS	NOTES
ST1	LUMINIS	FIXTURE: MA10-L180-TYP3-277V-BZT-SP-FS POLE: VALMONT 25" BRONZE	CAST AL AREA FIXTURE, TYPE 3 DISTRIBUTION, 25" STRAIGHT AL POLE, FUSES IN POLE, SURGE PROTECTION, POLE AND FIXTURE BRONZE FINISH	25" POLE	LED	4000	8200	277	80	
SP1	LUMINIS	FIXTURE: MA20-L140-TYP2-277V-BZT-SP-FS POLE: PAA412-2-BZT-XM7508	CAST AL AREA FIXTURE, 17" DIA, POST TOP, TYPE 2 DISTRIBUTION, 12" X 4" DIA, STRAIGHT AL POLE, FUSES IN POLE, SURGE PROTECTION, POLE AND FIXTURE BRONZE FINISH. PROVIDE POLE WITH EXTRA ACCESS HOLE AT TOP OF POLE, 9" ON SAME SIDE ABOVE HANDHOLE	12" POLE	LED	4000	3822	277	36	

ELECTRICAL LEGEND

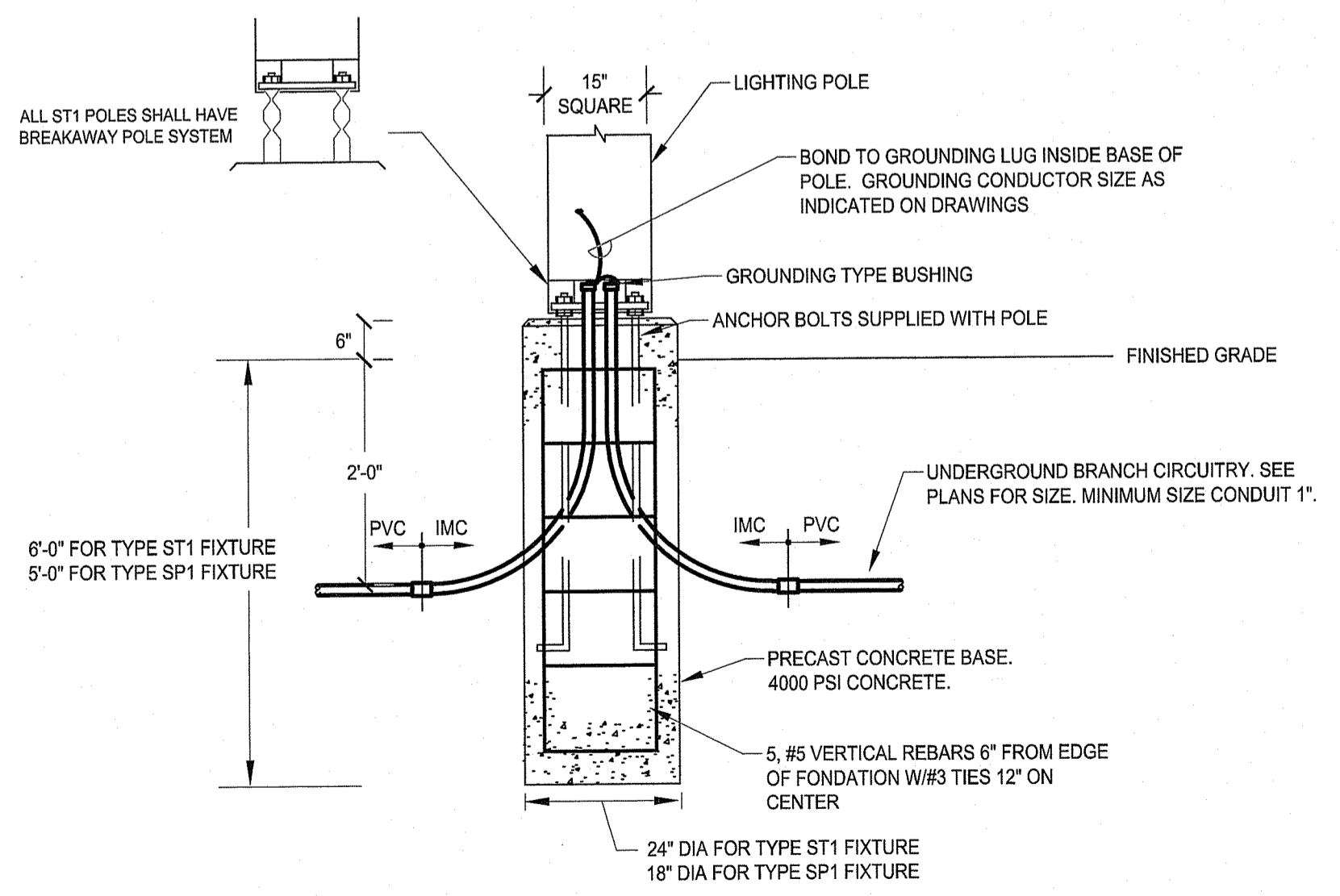
- ELECTRICAL LEGEND
- ST1 POLE MOUNTED STREET LIGHTING FIXTURE, SINGLE HEAD  
ST1 - INDICATES FIXTURE TYPE (SEE FIXTURE SCHEDULE)  
a,n - INDICATES PHASE-TO-NEUTRAL FOR 277V, SEE DETAILS 3 & 4, E200
  - SP1 PEDESTRIAN POST TOP FIXTURE  
SP1 - INDICATES FIXTURE TYPE (SEE FIXTURE SCHEDULE)  
a,n - INDICATES PHASE-TO-NEUTRAL FOR 277V, SEE DETAILS 3 & 4, E200
  - — — UNDERGROUND CONDUIT, 1" C, UON.
  - HE 24" X 24" POLYMER CONCRETE STACKABLE HANDHOLE, SEE DETAIL THIS DWG.  
HE - ELECTRICAL HANDHOLE  
HS - SECURITY HANDHOLE
  - B-360 CCTV CAMERA  
B - INDICATES BRYANT CAMERA  
F - INDICATES FIDELITY CAMERA  
360 - INDICATES 360 DEGREE CAMERA  
180 - INDICATES 180 DEGREE CAMERA



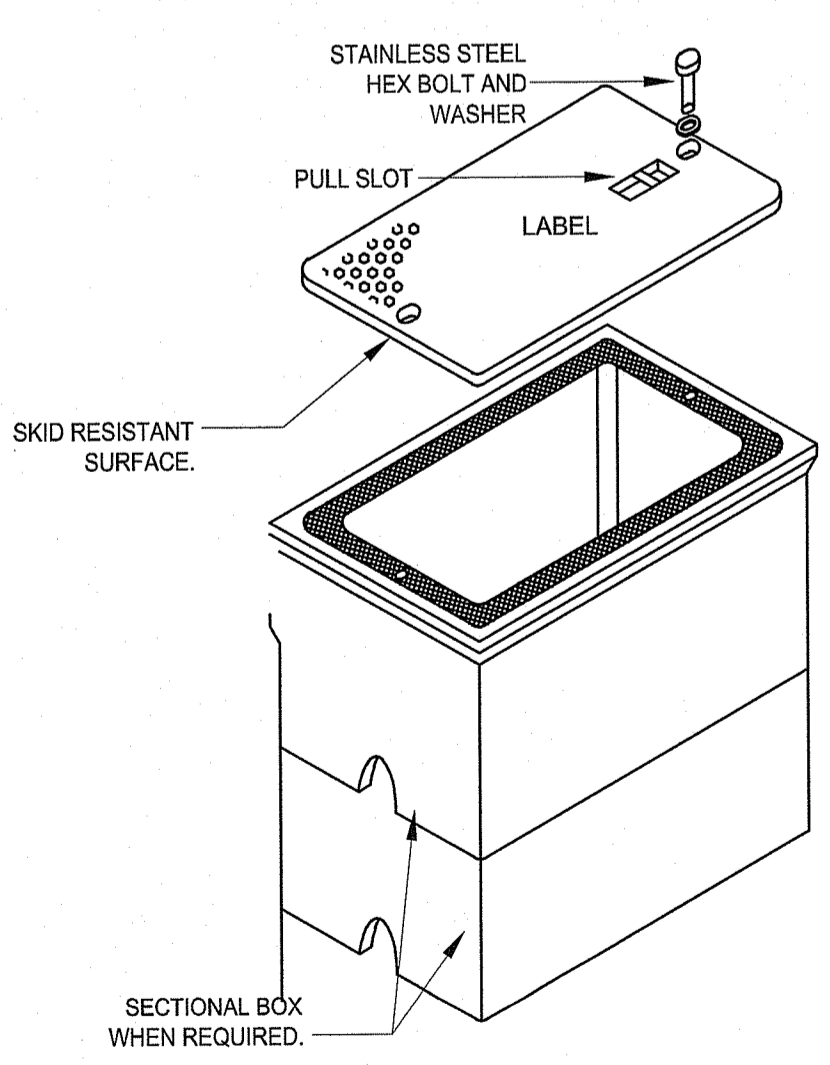
5 FIXTURE HEIGHTS  
SCALE: NONE



6 TYPICAL POLE CONNECTION  
SCALE: NONE

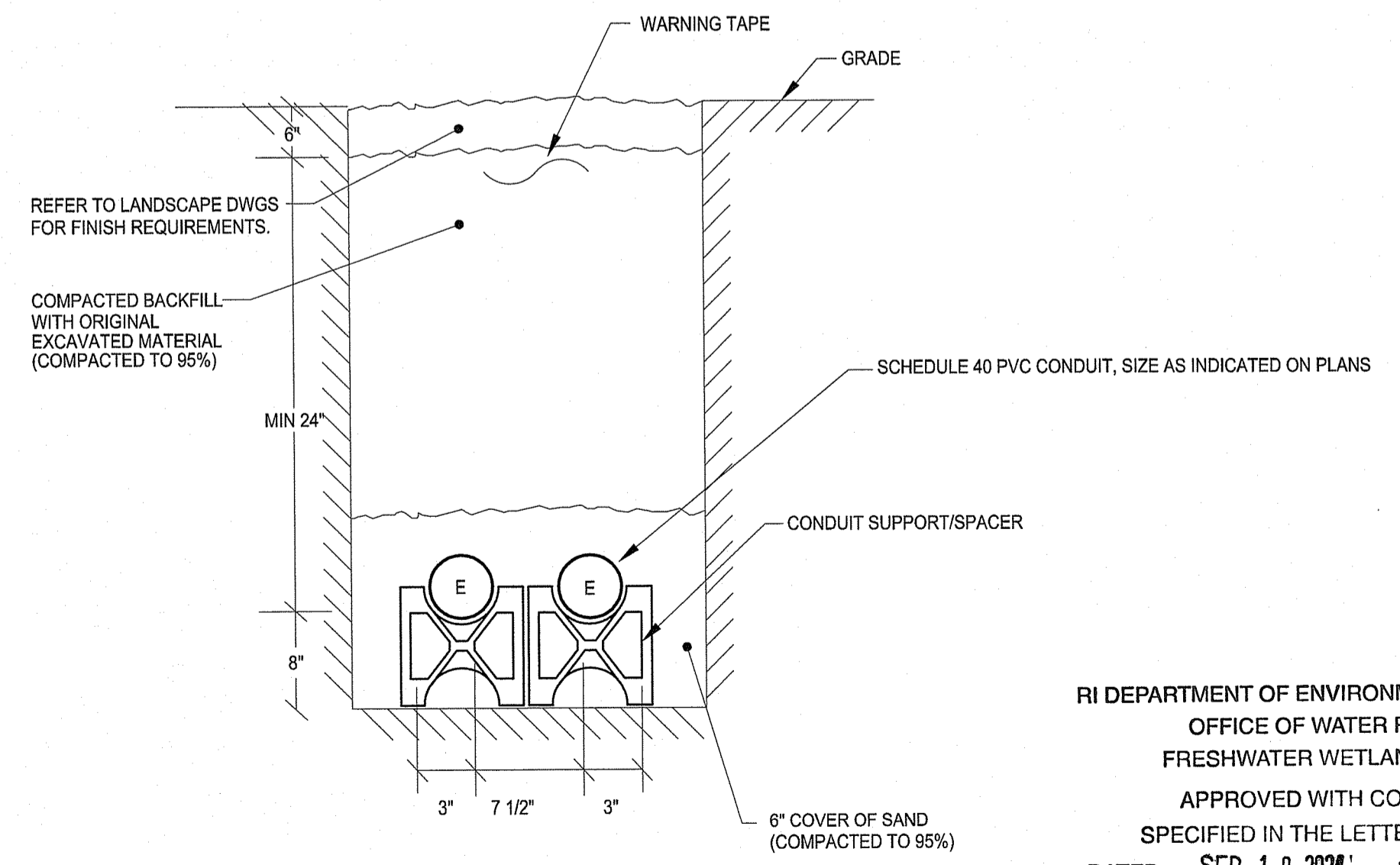


1 FOUNDATION DETAIL  
SCALE: NONE



2 HANDHOLE DETAIL  
SCALE: NONE

- HANDHOLE REQUIREMENTS
- HOUSING SHALL BE A POLYMER CONCRETE REINFORCED WITH A HEAVY WEAVE FIBERGLASS REINFORCING WITH COMPRESSIVE STRENGTH OF NO LESS THAN 8,000 psi.
  - COVER AND BOX SHALL WITHSTAND A SERVICE LOAD OF NO LESS THAN 5,000 LBS OVER A 10" X 10" AREA, RATED TIER 22.
  - PROVIDE STAINLESS STEEL BOLTS AND INSERTS.
  - PROVIDE LABEL "ELECTRICAL"
  - HANDHOLE DIMENSION: 24" X 24" X 24" DEEP



3 CONDUIT TRENCH DETAIL  
SCALE: NONE

RI DEPARTMENT OF ENVIRONMENTAL MANAGEMENT  
OFFICE OF WATER RESOURCES  
FRESHWATER WETLANDS PROGRAM  
APPROVED WITH CONDITIONS AS  
SPECIFIED IN THE LETTER OF APPROVAL  
DATED: SEP 19 2024 FILE #: 24-0191  
NO CHANGES ALLOWED WITHOUT PRIOR APPROVAL  
APPROVED PLANS MUST BE AT CONSTRUCTION SITE

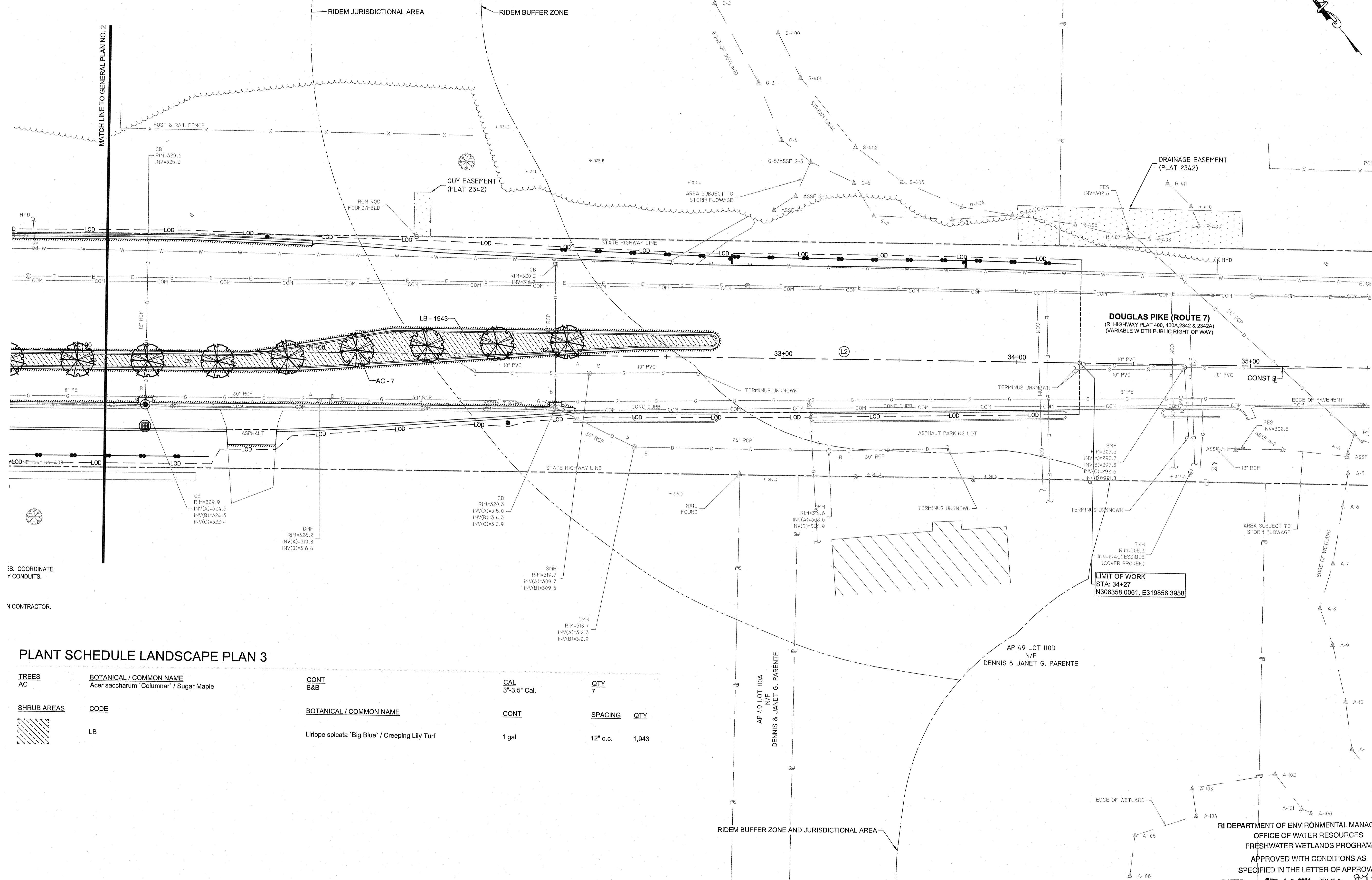
*Randy Cloutier*





AP 49 LOT 71  
N/F  
RHODE ISLAND ECONOMIC DEVL  
CORP/DELITY REAL ESTATE COMPANY LLC

AP 49 LOT 72  
N/F  
RHODE ISLAND ECONOMIC DEVELOPMENT CORP



SCALE ADJUSTMENT GUIDE  
0' 1'  
BAR IS ONE INCH ON ORIGINAL DRAWING

Route 7 Safe Crossing and  
Pedestrian Path Project  
Smithfield, Rhode Island



PLANT SCHEDULE LANDSCAPE PLAN 3

TREES	BOTANICAL / COMMON NAME	CONT	CAL	QTY
AC	Acer saccharum 'Columnar' / Sugar Maple	B&B	3"-3.5" Cal.	7

SHRUB AREAS	CODE	BOTANICAL / COMMON NAME	CONT	SPACING	QTY
	LB	Liriope spicata 'Big Blue' / Creeping Lily Turf	1 gal	12" o.c.	1,943

REVISIONS:

NO.	DATE	DESCRIPTION

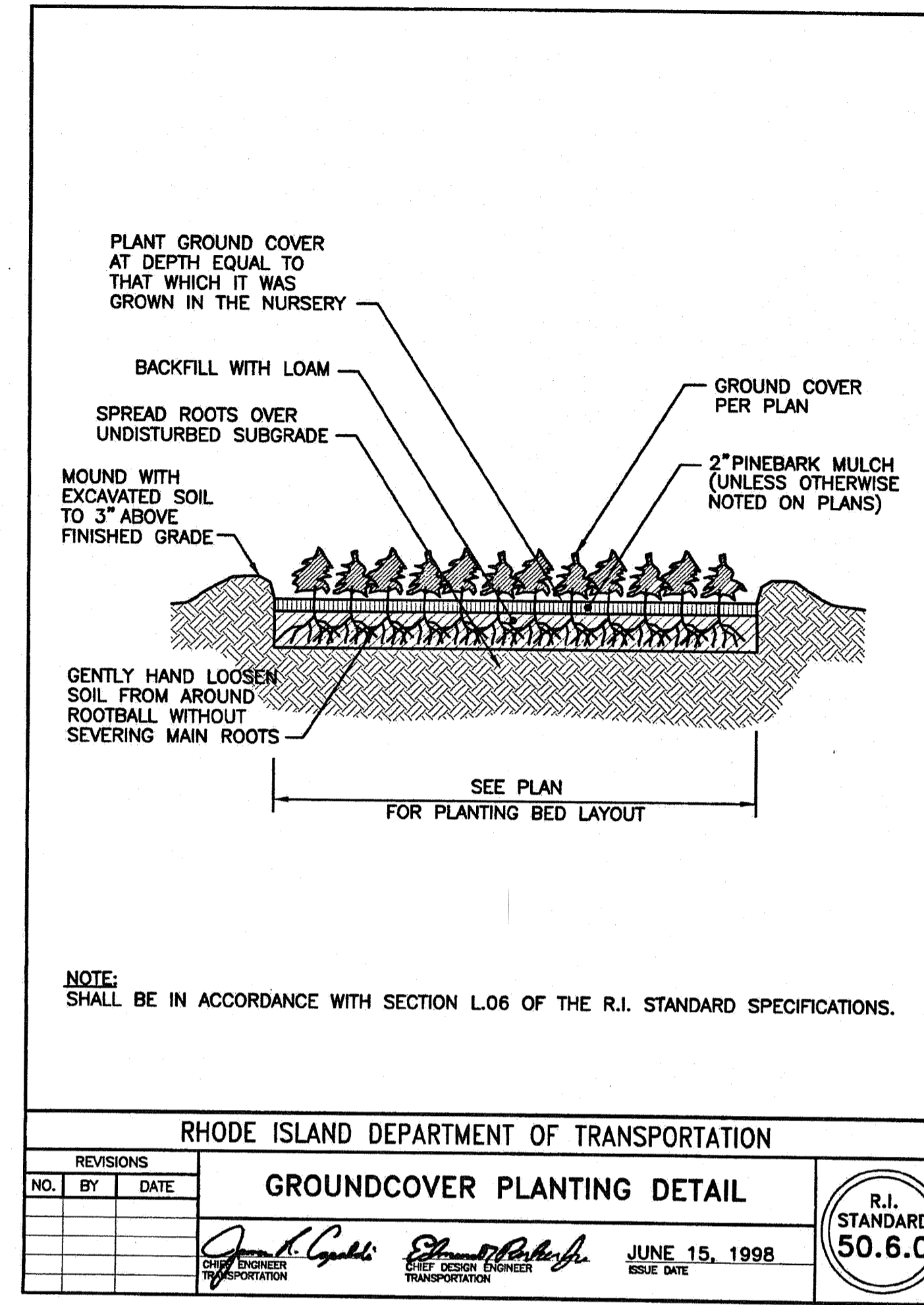
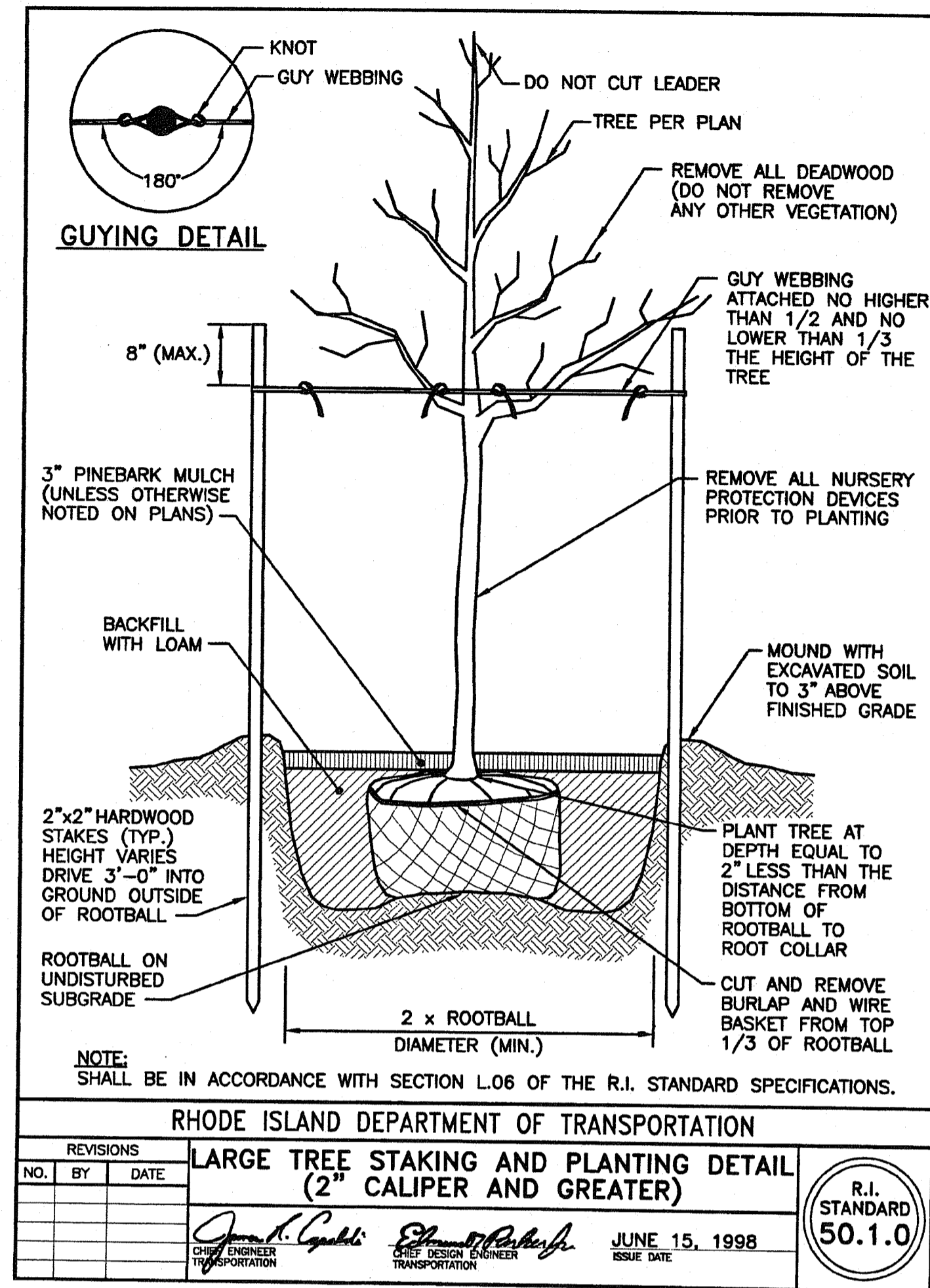
RI DEPARTMENT OF ENVIRONMENTAL MANAGEMENT  
OFFICE OF WATER RESOURCES  
FRESHWATER WETLANDS PROGRAM  
APPROVED WITH CONDITIONS AS  
SPECIFIED IN THE LETTER OF APPROVAL  
DATED: SEP 10 2024 FILE #: 24-0191  
NO CHANGES ALLOWED WITHOUT PRIOR APPROVAL  
APPROVED PLANS MUST BE AT CONSTRUCTION SITE

Scale: 1"=20'  
0 10' 20' 40'

PROJECT NO.: 23189.00  
DATE: AUGUST 2024  
SCALE: 1"=20'  
DESIGNED BY:  
CHECKED BY:  
DRAWN BY:  
APPROVED BY:  
DRAWING TITLE:

LANDSCAPE PLAN NO. 3  
VOLUME 1  
INTERSECTION IMPROVEMENTS  
DRAWING NO.:  
**L13**  
SHEET NO. 28 OF 30

P:\WORK\23 2024\2189\00 - Smithfield - Byroad - University\DWG\L13 LANDSCAPE.dwg



SCALE ADJUSTMENT GUIDE  
0' 1' 2'  
BAR IS ONE INCH ON ORIGINAL DRAWING

Route 7 Safe Crossing and Pedestrian Path Project  
Smithfield, Rhode Island



REVISIONS:	
NO.	DATE

PROJECT NO.: 23189.00  
DATE: AUGUST 2024  
SCALE: AS NOTED  
DESIGNED BY:  
CHECKED BY:  
DRAWN BY:  
APPROVED BY:  
DRAWING TITLE:  
LANDSCAPE DETAILS  
VOLUME 1  
INTERSECTION IMPROVEMENTS  
DRAWING NO.:  
L2.1  
SHEET NO. 30 OF 36

RI DEPARTMENT OF ENVIRONMENTAL MANAGEMENT  
OFFICE OF WATER RESOURCES  
FRESHWATER WETLANDS PROGRAM  
APPROVED WITH CONDITIONS AS SPECIFIED IN THE LETTER OF APPROVAL  
DATED: SEP 19 2024 FILE #: 24-0191  
NO CHANGES ALLOWED WITHOUT PRIOR APPROVAL  
APPROVED PLANS MUST BE AT CONSTRUCTION SITE  
*Andy Chapman*

**SURVEY NOTES:**

- THIS SITE IS LOCATED IN FEMA FLOOD ZONE X. REFERENCE FEMA FLOOD INSURANCE RATE MAP 44007C0167H, MAP REVISED OCTOBER 2, 2015. THIS DESIGNATION MAY CHANGE BASED UPON REVIEW BY A FLOOD ZONE SPECIALIST OR BY THE RESULTS OF A COMPREHENSIVE FLOOD STUDY.
- THE PARCEL IS ZONED PC BASED ON THE TOWN OF SMITHFIELD GIS DATABASE. ANY OVERLAY DISTRICTS, SPECIAL PERMITS OR VARIANCES SPECIFIC TO THIS SITE ARE NOT TAKEN INTO CONSIDERATION. PLEASE CONTACT THE ZONING DEPARTMENT FOR ANY ADDITIONAL INFORMATION OR FOR A CERTIFICATE OF ZONING.
- THERE WERE NO CEMETERIES, GRAVE SITES AND OR BURIAL GROUNDS OBSERVED WITHIN THE LIMITS OF THE SURVEY AND THERE ARE NO CEMETERIES, GRAVE SITES AND OR BURIAL GROUNDS SHOWN ON THE RHODE ISLAND HISTORICAL CEMETERIES ONLINE DATABASE.
- FIELD SURVEY PERFORMED BY DIPRETE ENGINEERING IN FEBRUARY & MARCH, 2024. THIS PLAN REFLECTS ON THE GROUND CONDITIONS AS OF THESE DATES.
- ELEVATIONS SHOWN HEREON, IN U.S. SURVEY FEET, ARE REFERENCED TO THE NORTH AMERICAN VERTICAL DATUM OF 1988 (NAVD 88), AS DETERMINED BY DIPRETE ENGINEERING USING REAL TIME KINEMATIC G.P.S. OBSERVATIONS.

**SURVEY PLAN REFERENCES:**

- RI HIGHWAY PLAT 400
- RI HIGHWAY PLAT 400A
- RI HIGHWAY PLAT 2342
- RI HIGHWAY PLAT 2342A
- PLAT BOOK 4, PAGE 75
- PLAT BOOK 5, PAGE 4
- PLAT BOOK 6, PAGE 190
- EXHIBIT BOOK A, PAGE 1
- EXHIBIT BOOK A, PAGE 4

**UTILITY NOTES:**

- ALL EXISTING UTILITIES DEPICTED ARE SHOWN ACCORDANCE WITH UTILITY QUALITY LEVEL C, AS DEFINED IN CIASCE STANDARD 38-02 (STANDARD GUIDELINES FOR THE COLLECTION AND DEPICTION OF EXISTING SUBSURFACE UTILITY DATA), LATEST REVISION.
- ALL EXISTING UNDERGROUND UTILITIES SHOWN WERE PROVIDED BY OTHERS AND ARE APPROXIMATE ONLY. LOCATIONS MUST BE DETERMINED IN THE FIELD BEFORE EXCAVATION, BLASTING, UTILITY INSTALLATION, BACKFILLING, GRADING, PAVEMENT RESTORATION, AND ALL OTHER SITE WORK. ALL UTILITY COMPANIES, PUBLIC AND PRIVATE, MUST BE CONTACTED INCLUDING THOSE IN CONTROL OF UTILITIES NOT SHOWN ON THESE DOCUMENTS. CONTACT DIG SAFE A MINIMUM OF 72 WORKING HOURS PRIOR TO ANY CONSTRUCTION AT 811. DIG SAFE IS RESPONSIBLE FOR CONTACTING MEMBER UTILITY COMPANIES. DIG SAFE MEMBER UTILITY COMPANIES ARE RESPONSIBLE TO MARK ONLY THE FACILITIES THAT THEY OWN OR MAINTAIN. NON DIG SAFE MEMBER COMPANIES ARE NOT NOTIFIED BY DIG SAFE. IT IS THE CONTRACTOR'S RESPONSIBILITY TO INVESTIGATE AND NOTIFY IF ANY PRIVATELY OWNED OR NON DIG SAFE MEMBER UTILITIES ARE IN THE AREA.
- PER THE CODE OF FEDERAL REGULATIONS - TITLE 29, PART 1926 IT IS THE SITE CONTRACTOR'S RESPONSIBILITY TO OBTAIN ACCURATE UNDERGROUND UTILITY LINE LOCATIONS FROM THE UTILITY COMPANIES, UTILITY OWNERS AND, OR VIA UNDERGROUND UTILITY LOCATION EQUIPMENT AS NEEDED TO ESTABLISH ACCURATE LOCATIONS PRIOR TO ANY EXCAVATION. THE USE OF PROFESSIONAL UTILITY LOCATING COMPANIES PRIOR TO ANY EXCAVATION IS RECOMMENDED.
- DIPRETE ENGINEERING IS NOT A PROFESSIONAL UTILITY LOCATION COMPANY, AND IS NOT RESPONSIBLE FOR UNDERGROUND UTILITIES, DEPICTED OR NOT, EITHER IN SERVICE OR ABANDONED. ANY SIZES, LOCATIONS, EXISTENCE, OR LACK OF EXISTENCE OF UTILITIES SHOWN ON THESE PLANS SHOULD BE CONSIDERED APPROXIMATE UNTIL VERIFIED BY A PROFESSIONAL UTILITY LOCATION COMPANY. DIPRETE ENGINEERING ASSUMES NO RESPONSIBILITY FOR DAMAGES INCURRED.
- UTILITY PLAN REFERENCES
  - WATER INFORMATION OBTAINED FROM THE TOWN OF SMITHFIELD WATER SUPPLY BOARD.
  - SEWER INFORMATION OBTAINED FROM THE TOWN OF SMITHFIELD GIS DATABASE AND N THE GROUND BY DIPRETE ENGINEERING. (SEE GENERAL NOTES FOR DATE OF FIELD SURVEY).
  - GAS INFORMATION OBTAINED FROM RHODE ISLAND ENERGY.
  - ELECTRIC INFORMATION REQUESTED (NOT RECEIVED).
  - DRAINAGE INFORMATION OBTAINED ON THE GROUND BY DIPRETE ENGINEERING. (SEE GENERAL NOTES FOR DATE OF FIELD SURVEY)

**GENERAL NOTES:**

- THE STATE OF RHODE ISLAND STANDARD SPECIFICATIONS FOR ROAD AND BRIDGE CONSTRUCTION, DATED FEBRUARY 2024 ALL REVISIONS AND ADDENDA, AND THE RHODE ISLAND STANDARD DETAILS ARE MADE A PART HEREOF AS FULLY AND COMPLETELY AS IF ATTACHED HERETO. ALL WORK SHALL MEET OR EXCEED THE RHODE ISLAND STANDARD SPECIFICATIONS FOR ROAD AND BRIDGE CONSTRUCTION, WITH LATEST REVISIONS. THE LATEST REVISION OF THE STANDARD SPECIFICATIONS MAY BE OBTAINED AT THE RHODE ISLAND DEPARTMENT OF TRANSPORTATION.
- THE CONTRACTOR SHALL MAKE ALL NECESSARY CONSTRUCTION NOTIFICATIONS AND APPLY FOR AND OBTAIN ALL NECESSARY CONSTRUCTION PERMITS, PAY ALL FEES AND POST ALL BONDS ASSOCIATED WITH THE SAME, AND COORDINATE WITH THE ENGINEER AND OWNER'S REPRESENTATIVE AS REQUIRED.
- THE CONTRACTOR SHALL BE SOLELY RESPONSIBLE FOR JOB SITE SAFETY. THE CONTRACTOR SHALL PROVIDE TEMPORARY FENCING AND/OR BARRIERS AROUND ALL OPEN EXCAVATED AREAS IN ACCORDANCE WITH OSHA FEDERAL, STATE, AND LOCAL REQUIREMENTS.
- THE CONTRACTOR SHALL BE RESPONSIBLE FOR VERIFYING THAT THE PROPOSED IMPROVEMENTS SHOWN ON THE PLANS DO NOT CONFLICT WITH ANY KNOWN EXISTING OR OTHER PROPOSED IMPROVEMENTS. IF ANY CONFLICTS ARE DISCOVERED, THE CONTRACTOR SHALL NOTIFY THE OWNER AND THE ENGINEER PRIOR TO INSTALLATION OF ANY PORTION OF THE SITE WORK WHICH WOULD BE AFFECTED. NO FIELD ADJUSTMENTS IN THE LOCATION OF SITE ELEMENTS SHALL BE MADE WITHOUT THE ENGINEER'S APPROVAL.
- IF ANY DEVIATION OR ALTERATION OF THE WORK PROPOSED ON THESE DRAWINGS IS REQUIRED, THE CONTRACTOR SHALL IMMEDIATELY CONTACT AND COORDINATE ANY DEVIATIONS WITH THE ENGINEER AND OWNER.
- ANY AREA OUTSIDE OF THE LIMIT OF WORK THAT IS DISTURBED SHALL BE RESTORED TO ITS ORIGINAL CONDITION AT NO ADDITIONAL COST TO THE OWNER.
- ALL SITE WORK SHALL MEET OR EXCEED THE SITE WORK SPECIFICATIONS PREPARED FOR THIS PROJECT.
- ALL SIGNS SHALL BE REFLECTORIZED TYPE III SHEETING AND CONFORM WITH THE MANUAL OF UNIFORM TRAFFIC CONTROL DEVICES (MUTCD), LATEST REVISION.
- ALL UTILITIES (LOCATION AND ELEVATION) DEPICTED SHALL BE CONSIDERED APPROXIMATE ONLY. BEFORE COMMENCING SITE WORK IN ANY AREA, CONTACT "DIG SAFE" AT 1-888-DIG-SAFE (1-888-344-7233) TO ACCURATELY LOCATE UNDERGROUND UTILITIES. ANY DAMAGE TO EXISTING UTILITIES OR STRUCTURES AND THE COST TO REPAIR THE DAMAGES TO INITIAL CONDITIONS, AS DEPICTED ON THE PLANS, SHALL BE THE CONTRACTOR'S RESPONSIBILITY.
- NO EXCAVATION SHALL BE DONE UNTIL UTILITY COMPANIES ARE PROPERLY NOTIFIED IN ADVANCE. NOTE THAT NOT ALL EXISTING UNDERGROUND UTILITIES ARE SHOWN. IT IS THE CONTRACTOR'S RESPONSIBILITY TO CONTACT ALL RESPECTIVE UTILITY COMPANIES TO VERIFY AND LOCATE EXISTING UTILITIES.

**LEGEND:**

- (AB) ADJUST CATCH BASIN TO GRADE
- (ABM) ADJUST CATCH BASIN TO MANHOLE
- (AD) ADJUST DRAINAGE MANHOLE TO GRADE
- (AE) ADJUST ELECTRIC MANHOLE TO GRADE
- (AFC) ADJUST FRAME AND COVER TO GRADE
- (AFG) ADJUST FRAME AND GRATE TO GRADE
- (AG) ADJUST GAS GATE BOX TO GRADE
- (AHH) ADJUST HANDHOLE TO GRADE
- (AS) ADJUST SANITARY SEWER MANHOLE TO GRADE
- (AT) ADJUST TELEPHONE MANHOLE TO GRADE
- (AW) ADJUST WATER GATE BOX TO GRADE
- (BCD) HMA DRIVEWAY  
3" MODIFIED CLASS 12.5 HMA  
8" GRAVEL BORROW SUBBASE COURSE
- (BTC) HMA BERM TRANSITION TO CURB (SEE "DETAILS")
- (CCB) CLEAN CATCH BASIN
- (CFP) CLEAN AND FLUSH PIPE
- (CFS) COMPOST FILTER SOCK (SEE "DETAILS")
- (CM) CUT AND MATCH
- (CMH) CLEAN MANHOLE
- (CFS) COMPOST FILTER SOCK
- (CIPC) CAST-IN-PLACE CONCRETE CURB
- (DB) REMOVE AND DISPOSE BITUMINOUS CURB
- (DC) REMOVE AND DISPOSE CONCRETE CURB
- (DFP) REMOVE AND DISPOSE FLEXIBLE PAVEMENT
- (DSW) REMOVE AND DISPOSE SIDEWALK
- (ETR) EXISTING TO REMAIN
- (FDS) FULL DEPTH SAWCUT OF BITUMINOUS PAVEMENT
- (ISCD) INLET SEDIMENT CONTROL DEVICE (SEE "DETAILS")
- (LA) LANDSCAPE AREA
- (LS) 4" LOAM AND SEED
- (MEPM) MATCH EXISTING PAVEMENT MARKING
- (MMO) MICROMILL AND OVERLAY  
MICROMILL 1.5" OF EXISTING PAVEMENT  
OVERLAY WITH 1.5" OF MODIFIED CLASS 9.5 HMA  
ASPHALT EMULSION TACK COAT BETWEEN HMA LAYERS
- (P1) FULL DEPTH PAVEMENT RECONSTRUCTION  
3.0" MODIFIED CLASS 9.5 HMA (PLACE IN TWO 1.5" LIFTS) OVER  
5.0" MODIFIED CLASS 19.0 HMA  
12.0" GRAVEL BORROW SUBBASE
- (P2) WALKING PATH PAVEMENT  
1.0" CLASS 4.75 HMA OVER  
3.0" CLASS 19.0 HMA OVER  
12.0" GRAVEL BORROW SUBBASE COURSE OVER COMMON BORROW AS  
REQUIRED
- (PCR X-X) PEDESTRIAN CURB RAMP - TYPE 1 (SEE "DETAILS")
- (R&D) REMOVE AND DISPOSE
- (R&R) REMOVE AND RELOCATE
- (R&S) REMOVE AND STOCKPILE
- (RRFH) REMOVE AND RESET FIRE HYDRANT

**LEGEND (CONTINUED):**

- (TEP) TIE NEW STRUCTURE TO EXISTING PIPE
- (TNP) TIE NEW PIPE INTO EXISTING STRUCTURE
- (4DY) 4" EPOXY RESIN PAVEMENT MARKINGS - DOUBLE YELLOW
- (#W) EPOXY RESIN PAVEMENT MARKINGS - WHITE
- (#TW) TEMPORARY WATERBORNE PAVEMENT MARKING PAINT- WHITE
- (#TY) TEMPORARY WATERBORNE PAVEMENT MARKING PAINT- YELLOW
- (#Y) EPOXY RESIN PAVEMENT MARKINGS - YELLOW

**R.I. STD. DETAILS:**

- (4.4.0) PRECAST 4'-0", 5'-0" OR 6'-0" ROUND CATCH BASIN
- (5.4.0) CONCRETE COLLARS
- (6.1.1) HEAVY DUTY SQUARE FRAME AND ROUND COVER
- (6.2.1) HEAVY DUTY ROUND FRAME AND COVER
- (6.3.2) SQUARE FRAME AND GRATE (BICYCLE SAFE)
- (7.1.0) PRECAST CONCRETE CURB
- (7.1.2) 6'-0" PRECAST CONCRETE TRANSITION CURB
- (7.1.3) PRECAST CONCRETE PEDESTRIAN CURB RAMP TRANSITION CURB
- (7.1.9) PRECAST CONCRETE RAMP STONE
- (7.2.0) PRECAST CONCRETE SLOPED FACE CURB
- (7.5.1A) BITUMINOUS BERM
- (19.4.0) ALUMINUM PEDESTAL
- (20.3.0) PAVEMENT MARKINGS - CROSSWALKS AND STOP LINES
- (24.2.0) SIGN POST SELECTION AND INSTALLATION DETAILS  
U-CHANNEL POST (SIGNS UP TO 8'-0"Wx4'-0"H)
- (26.1.0) FLUORESCENT TRAFFIC CONES
- (29.1.0) CONSTRUCTION SIGNS
- (43.3.0) PEDESTRIAN CURB RAMP
- (48.1.0) DETECTABLE WARNING PANEL PLACEMENT
- (51.1.0) TREE PROTECTION DEVICE
- (51.2.0) SHRUB PROTECTION DEVICE

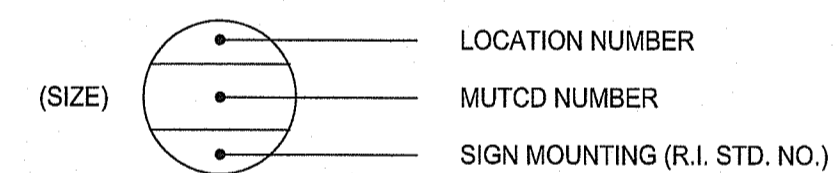
**DRAINAGE AND EROSION CONTROL NOTES:**

- NO UNDISTURBED AREAS SHALL BE CLEARED OF EXISTING VEGETATION AFTER OCTOBER 15 OF ANY CALENDAR YEAR OR DURING ANY PERIOD OF FULL OR LIMITED WINTER SHUTDOWN. ALL DISTURBED SOILS EXPOSED PRIOR TO OCTOBER 15 OF ANY CALENDAR YEAR SHALL BE SEEDED OR PROTECTED BY THAT DATE. ANY SUCH AREAS THAT DO NOT HAVE ADEQUATE VEGETATIVE STABILIZATION, AS DETERMINED BY THE RESIDENT ENGINEER OR ENVIRONMENTAL INSPECTOR, BY NOVEMBER 15 OF ANY CALENDAR YEAR, MUST BE STABILIZED THROUGH THE USE OF EROSION CONTROL MATTING OR HAY MULCH, IN ACCORDANCE WITH SPECIFICATIONS CONTAINED WITHIN THE R.I. SOIL EROSION AND SEDIMENT CONTROL HANDBOOK. IF WORK CONTINUES WITHIN ANY OF THESE AREAS DURING THE PERIOD FROM OCTOBER 15 THROUGH APRIL 15, CARE MUST BE TAKEN TO ENSURE THAT ONLY THE AREA REQUIRED FOR THAT DAY'S WORK IS EXPOSED, AND ALL ERODIBLE SOIL MUST BE RESTABILIZED WITHIN 5 WORKING DAYS. ANY WORK TO CORRECT PROBLEMS RESULTING FROM FAILURE TO COMPLY WITH THIS PROVISION SHALL BE THE RESPONSIBILITY OF THE CONTRACTOR. THERE WILL BE NO SEPARATE PAYMENT FOR THIS PROVISION, IT SHALL BE CONSIDERED INCIDENTAL TO CONSTRUCTION OPERATIONS. STABILIZATION OF ONE FORM OR ANOTHER AS DESCRIBED ABOVE SHALL BE ACHIEVED WITHIN 2 WEEKS OF FINAL GRADING.
- STOCKPILES OF MATERIAL SHALL NOT BE LOCATED WITHIN REGULATED WETLANDS OR BUFFER ZONE AREAS. THEY SHALL HAVE SIDE SLOPES NO GREATER THAN 30% AND STOCKPILES OF ERODIBLE MATERIAL SHALL ALSO BE SEEDED AND RINGED WITH COMPOST FILTER SOCK TO STABILIZE.
- UNVEGETATED SLOPES SHALL NOT BE UNATTENDED OR EXPOSED FOR PERIODS IN EXCESS OF 2 WEEKS OR THROUGH THE INACTIVE WINTER SEASON.
- PRIOR TO CONSTRUCTION, THE CONTRACTOR IS RESPONSIBLE FOR VERIFYING THE LOCATION (HORIZONTAL AND VERTICAL) OF ALL EXISTING PIPES AND/OR STRUCTURES. ANY VARIATION FOUND FROM THE PLANS OR POTENTIAL CONFLICTS MUST BE BROUGHT TO THE ENGINEER'S ATTENTION PRIOR TO START OF CONSTRUCTION. WORK CAN COMMENCE UPON THE ENGINEER'S AUTHORIZATION.
- CATCH BASIN RIM GRADES SHALL BE SET FLUSH WITH GUTTER GRADE, OR AS DIRECTED BY THE ENGINEER.
- THE CONTRACTOR MUST REPAIR AND/OR RESEED ANY AREAS THAT DO NOT DEVELOP WITHIN THE PERIOD OF ONE YEAR AND HE SHALL DO SO AT NO ADDITIONAL EXPENSE TO THE TOWN.
- THE NORMAL ACCEPTABLE SEASONAL SEEDING DATES ARE SPECIFIED IN SUBSECTION L02.03.01 OF THE RIDOT STANDARD SPECIFICATIONS, LATEST EDITION.
- ALL EROSION CONTROLS SHALL BE REMOVED AND DISPOSED AT THE COMPLETION OF WORK AND STABILIZATION OF DISTURBED AREAS. NO SEPARATE PAYMENT WILL BE MADE FOR THIS WORK. ALL COSTS SHALL BE INCLUDED IN THE COST OF EROSION CONTROLS.
- CONTRACTOR TO EXCAVATE TEST PITS IN AREAS OF POTENTIAL UTILITY CONFLICTS AND RELAY INFORMATION TO ENGINEER PRIOR TO COMMENCEMENT OF UTILITY WORK.
- CATCH BASIN INLET SEDIMENT CONTROL DEVICES SHALL BE UTILIZED WHEN ADJACENT WORK ACTIVITY EXPOSES ERODIBLE SOILS.
- DRAINAGE INFORMATION IS PROVIDED FOR DESIGN PURPOSE ONLY.

**PLAN SYMBOLS**



**TYPICAL SIGN DESIGNATION SYMBOL**



RI DEPARTMENT OF ENVIRONMENTAL MANAGEMENT  
OFFICE OF WATER RESOURCES  
FRESHWATER WETLANDS PROGRAM  
APPROVED WITH CONDITIONS AS  
SPECIFIED IN THE LETTER OF APPROVAL  
DATED: SEP 19 2024 FILE #: 24-019  
NO CHANGES ALLOWED WITHOUT PRIOR APPROVAL  
APPROVED PLANS MUST BE AT CONSTRUCTION SITE



SCALE ADJUSTMENT GUIDE  
0" 1"  
BAR IS ONE INCH ON ORIGINAL DRAWING

Route 7 Safe Crossing and  
Pedestrian Path Project  
Smithfield, Rhode Island



**REVISIONS:**

NO.	DESCRIPTION	DATE

PROJECT NO.: 23189.00  
DATE: AUGUST 1, 2024  
SCALE: AS NOTED  
DESIGNED BY:  
CHECKED BY:  
DRAWN BY:  
APPROVED BY:  
DRAWING TITLE:

**NOTES AND LEGEND**

VOLUME 2  
WALKING PATH

DRAWING NO.:  
**C11**  
SHEET NO. 2 OF 3





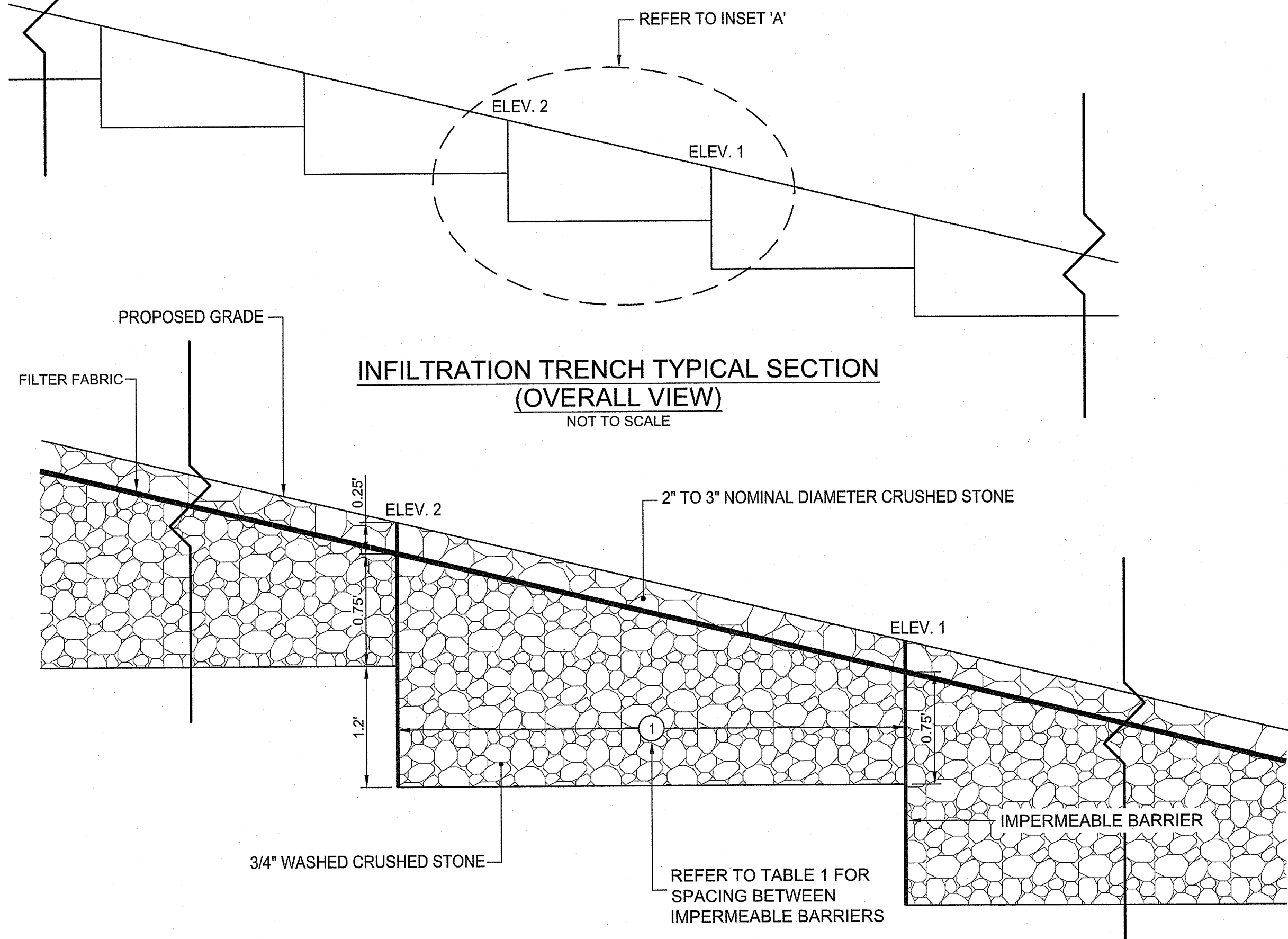




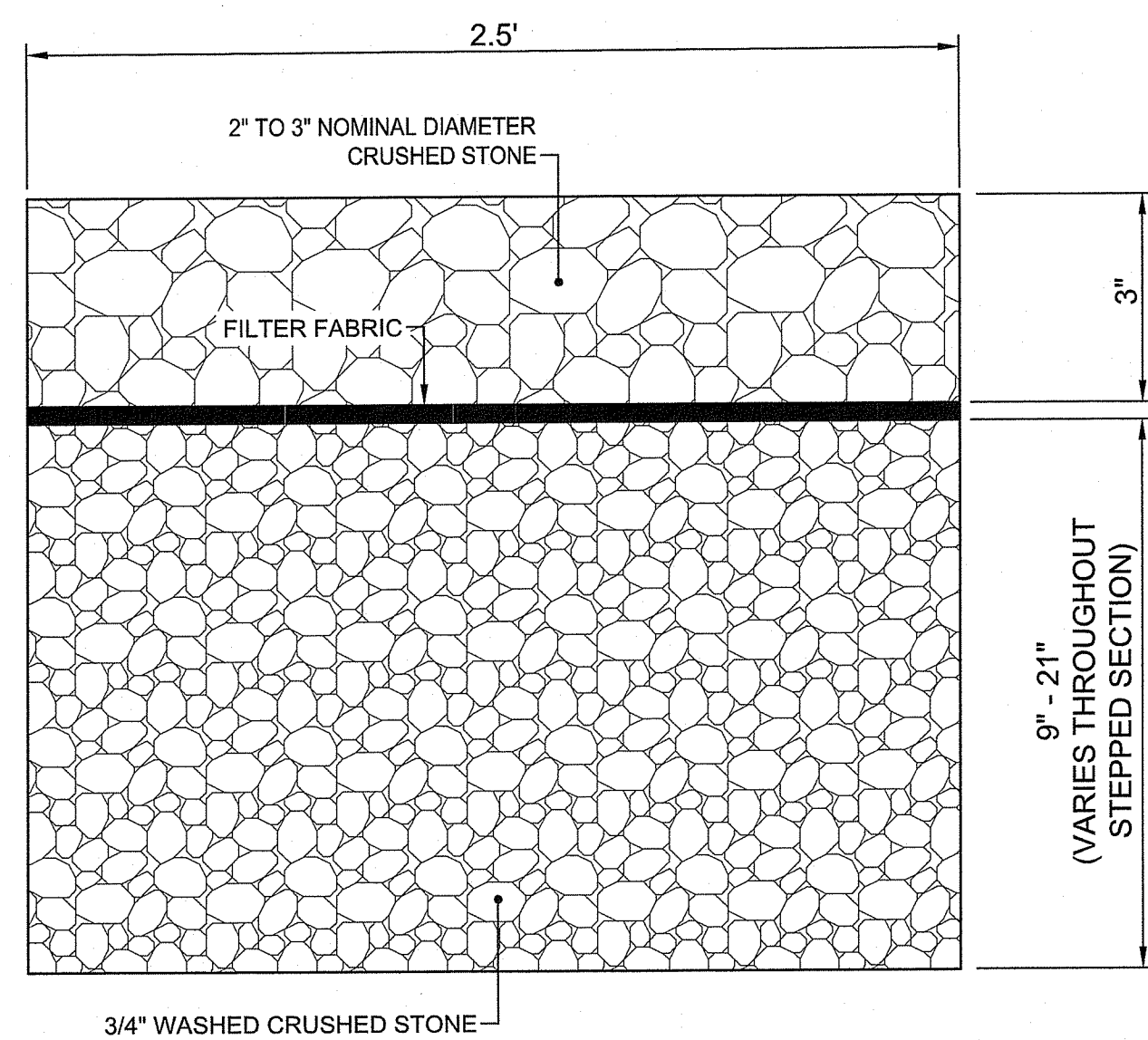




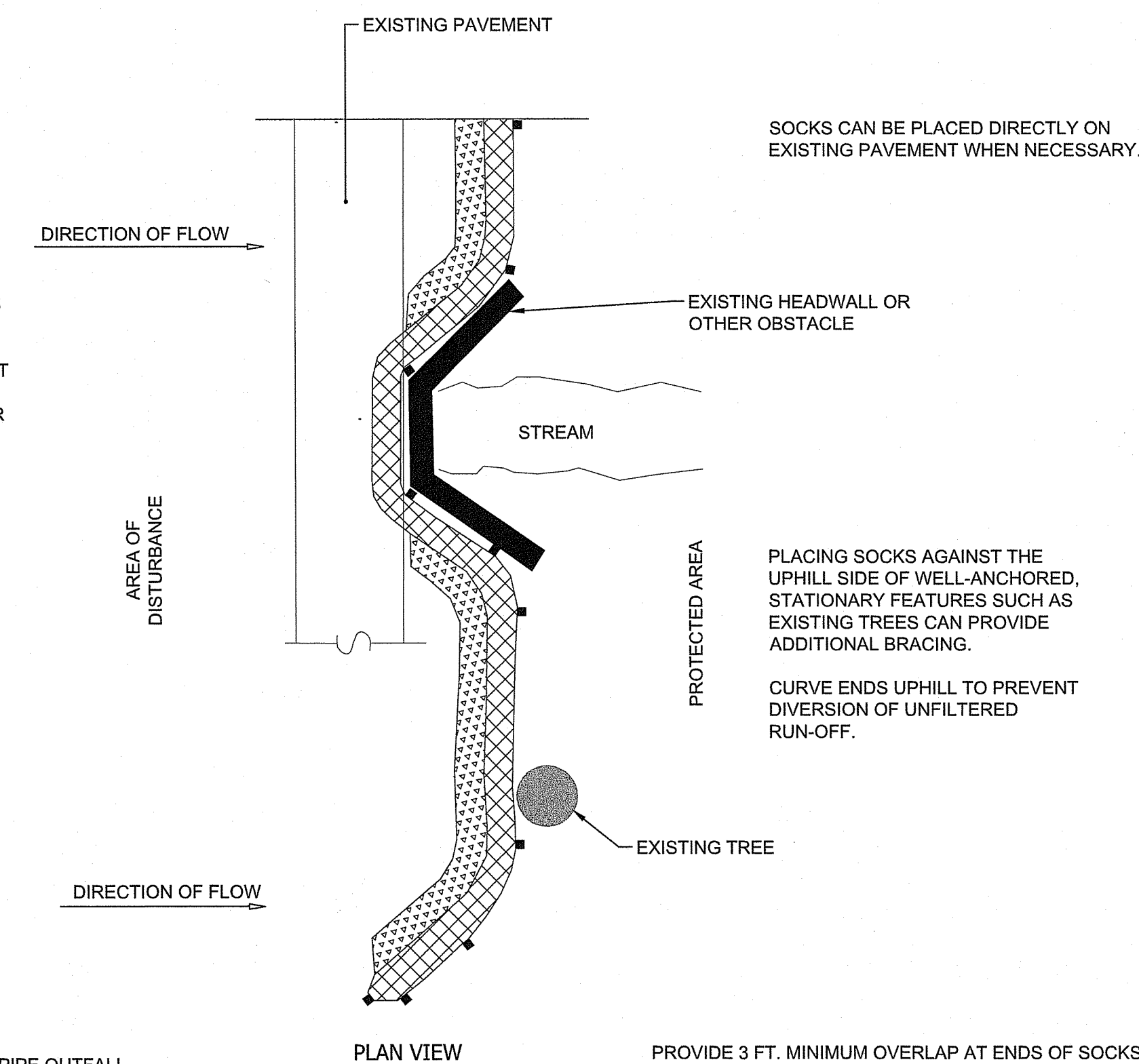
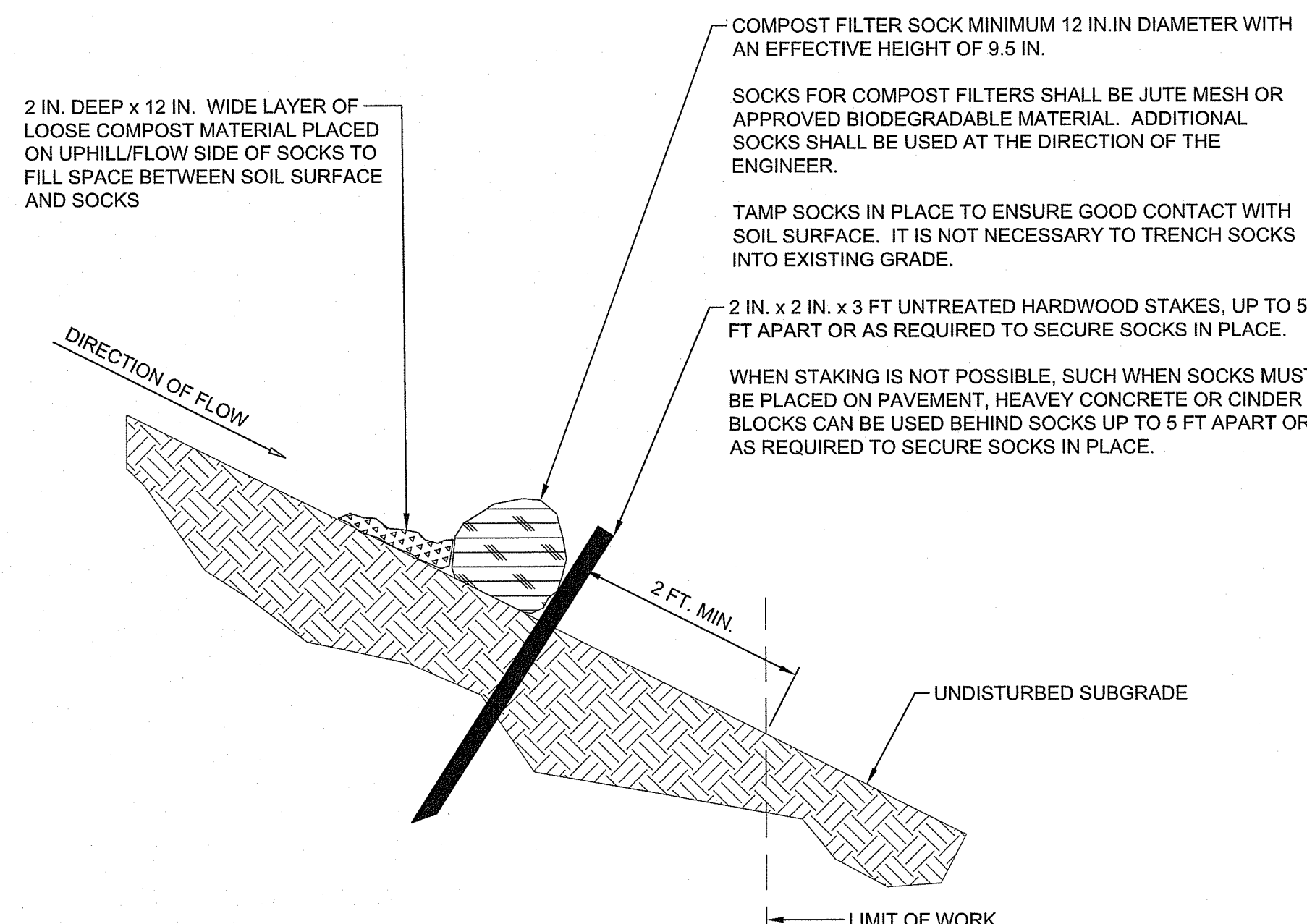
STA (START)	STA (END)	SLOPE (%)	① BARRIER SPACING
0+50	2+72	5.00%	20 Ft
2+72	6+25	4.34%	23 Ft
6+25	7+65	-2.74%	36 Ft
7+65	8+67	4.94%	20 Ft
8+67	8+90	1.50%	66 Ft
8+90	11+50	5.00%	20 Ft



INSET 'A'  
INFILTRATION TRENCH TYPICAL SECTION  
NOT TO SCALE

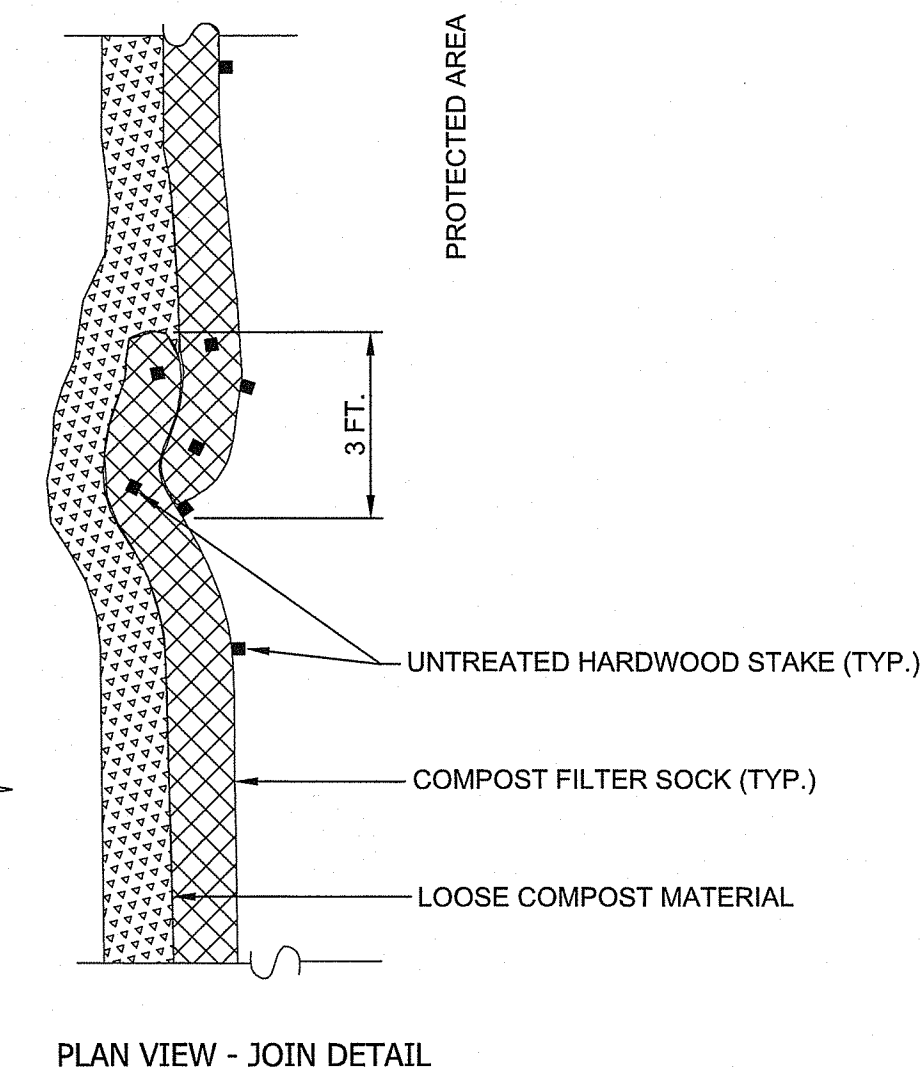
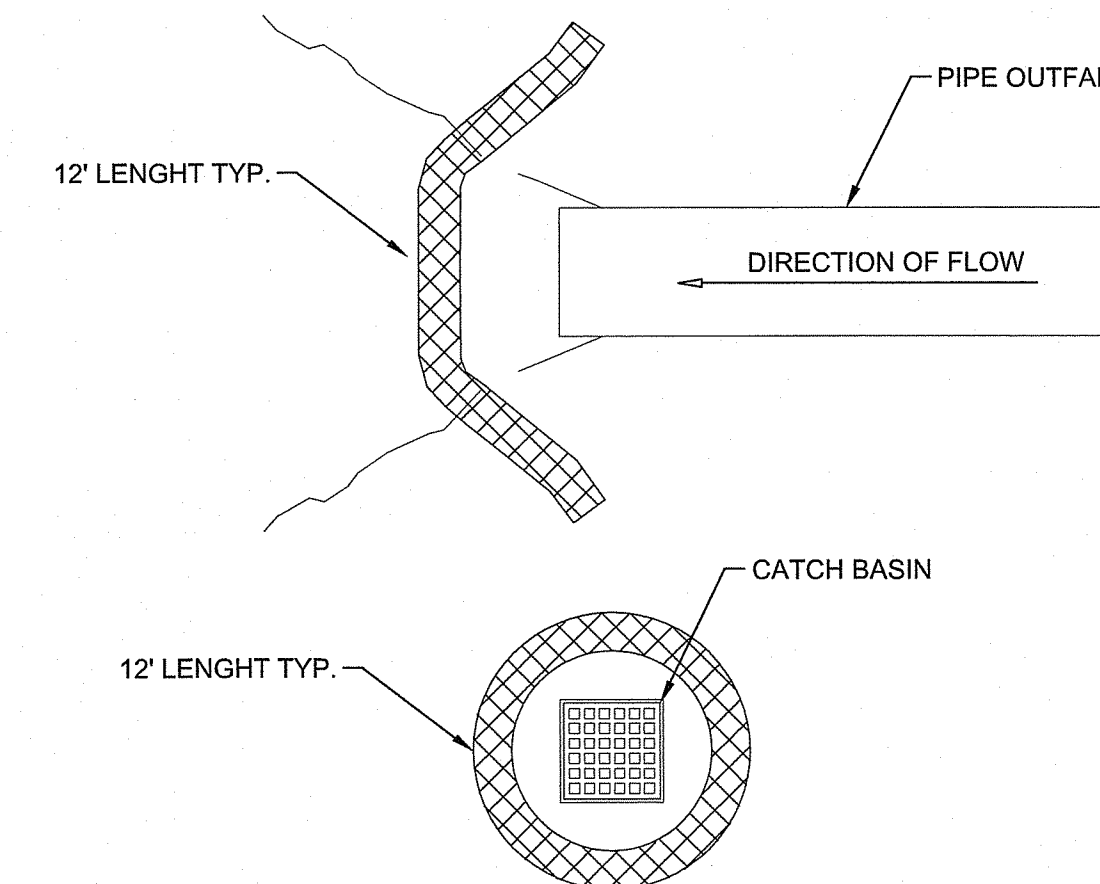


INFILTRATION TRENCH TYPICAL  
CROSS-SECTION DETAIL  
NOT TO SCALE



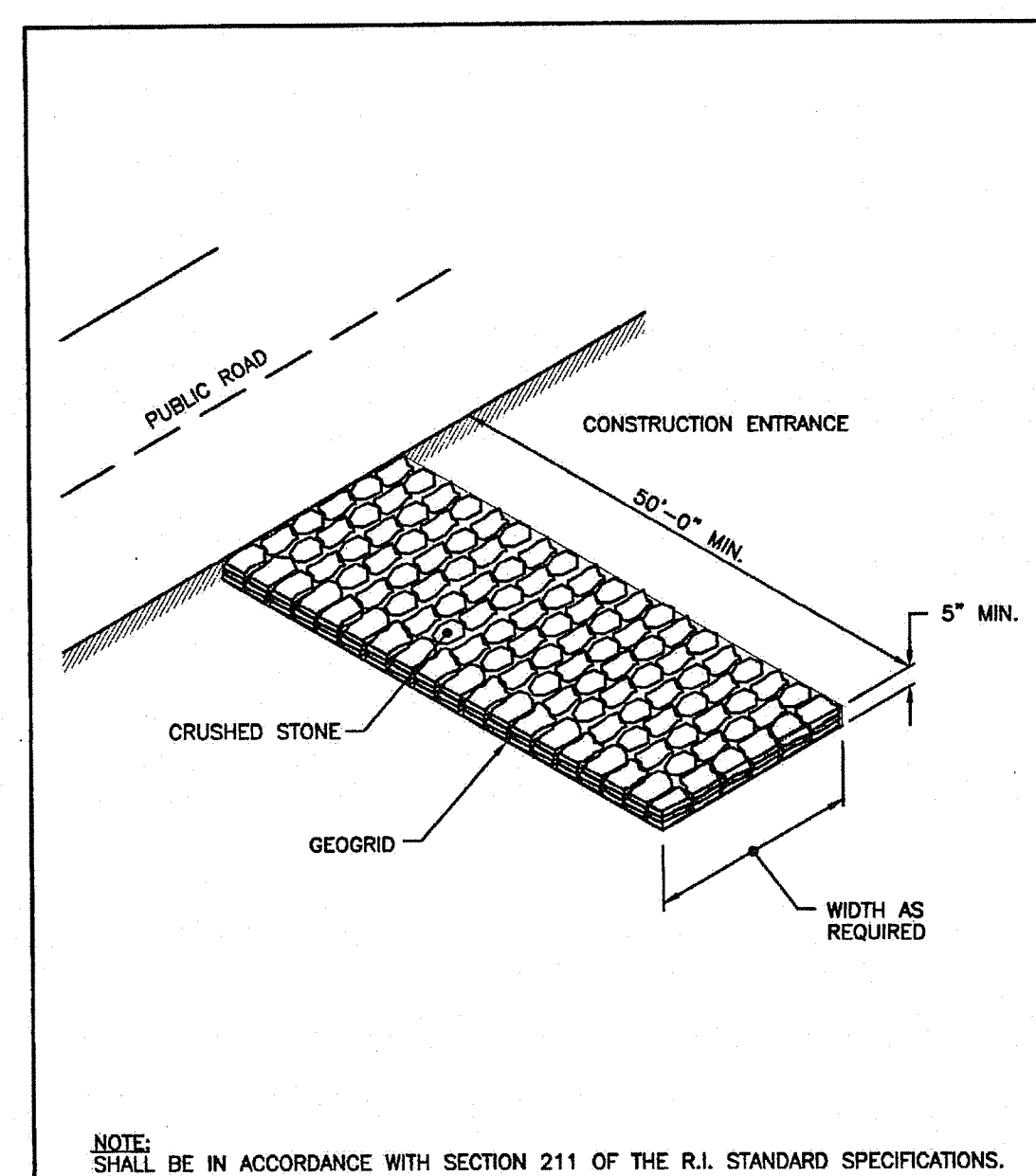
PROVIDE 3 FT. MINIMUM OVERLAP AT ENDS OF SOCKS TO JOIN A CONTINUOUS BARRIER AND MINIMIZE UNIMPEDED FLOW. STAKE JOINING SOCKS SNUGLY AGAINST EACH OTHER TO PREVENT UNFILTERED FLOW BETWEEN THEM.

SECURES ENDS OF SOCKS WITH STAKES SPACED 18 IN. APART THROUGH TOPS OF SOCKS.



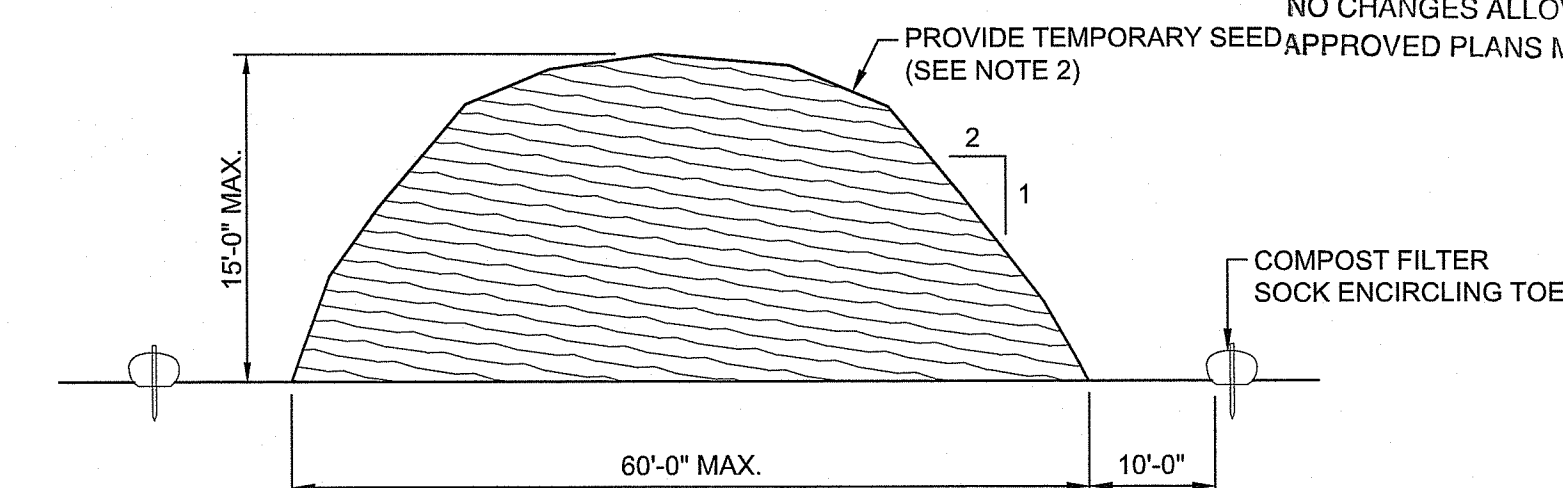
- NOTES:
1. PROVIDE A MINIMUM SOCK DIAMETER OF 12 INCHES FOR SLOPES UP TO 50 FEET IN LENGTH WITH A SLOPE RATIO OF 3H:1V OR STEEPER. LONGER SLOPES OF 3H:1V MAY REQUIRE LARGER SOCK DIAMETER OR ADDITIONAL COURSING OF FILTER SOCKS TO CREATE A FILTER BERM. REFER TO MANUFACTURER'S RECOMMENDATIONS FOR SITUATIONS WITH LONGER OR STEEPER SLOPES.
  2. INSTALL SOCKS ALONG CONTOURS AND PERPENDICULAR TO SHEET OR CONCENTRATED FLOW.
  3. DO NOT INSTALL IN PERENNIAL, EPHEMERAL OR INTERMITTENT STREAMS.
  4. CONFIGURE SOCKS AROUND EXISTING SITE FEATURES TO MINIMIZE SITE DISTURBANCE AND MAXIMIZE CAPTURE AREA OF STORMWATER RUN-OFF.

CFS COMPOST FILTER SOCK DETAIL  
NOT TO SCALE



NOTE: SHALL BE IN ACCORDANCE WITH SECTION 211 OF THE R.I. STANDARD SPECIFICATIONS.

RHODE ISLAND DEPARTMENT OF TRANSPORTATION		
CONSTRUCTION ACCESS		
NO.	BY	DATE
SUPERVISOR		CHIEF ENGINEER
JUNE 15, 1998		DATE
		9.9.0



- NOTES:
1. STOCKPILE AREA SHALL NOT EXCEED SPECIFIED DIMENSIONS WITHOUT APPROVAL FROM ENGINEER.
  2. STOCKPILED ERODIBLE MATERIAL THAT WILL NOT BE USED FOR GREATER THAN 14 DAYS SHALL BE STABILIZED WITH TEMPORARY SEED IMMEDIATELY FOLLOWING PLACEMENT. USE RIDOT STD. M.18.10.5 SEED MIX.

ERODIBLE MATERIAL STOCKPILE  
NOT TO SCALE



SCALE ADJUSTMENT GUIDE  
0' 1'  
BAR IS ONE INCH ON ORIGINAL DRAWING

Route 7 Safe Crossing and  
Pedestrian Path Project  
Smithfield, Rhode Island



REVISIONS:

RI DEPARTMENT OF ENVIRONMENTAL MANAGEMENT  
OFFICE OF WATER RESOURCES  
FRESHWATER WETLANDS PROGRAM  
APPROVED WITH CONDITIONS AS  
SPECIFIED IN THE LETTER OF APPROVAL  
DATED: SEP 19 2024 FILE #: 24-091  
NO CHANGES ALLOWED WITHOUT PRIOR APPROVAL  
APPROVED PLANS MUST BE AT CONSTRUCTION SITE

PROJECT NO.: 23189.00  
DATE: AUGUST 1, 2024  
SCALE: AS NOTED  
DESIGNED BY:  
CHECKED BY:  
DRAWN BY:  
APPROVED BY:  
DRAWING TITLE:

DETAILS  
VOLUME 2  
WALKING PATH  
DRAWING NO.:  
C4.1  
SHEET NO. 31 OF 18

Z:\WORK\13\_Arch\13189.00\_Smithfield-Rhode\_Island-RI-DEPT-Env-Office-Water-Resources-Freshwater-Wetlands-Program\13189.00\_Smithfield-Rhode\_Island-RI-DEPT-Env-Office-Water-Resources-Freshwater-Wetlands-Program.dwg





**IMEG**  
www.imegcorp.com  
10 FRANKLIN STREET  
BOSTON, MA 02116  
P: 617.542.0610

SCALE ADJUSTMENT GUIDE  
0' 1' 2'  
BAR IS ONE INCH ON ORIGINAL DRAWING

**Route 7 Safe Crossing and Pedestrian Path Project**  
Smithfield, Rhode Island



RI DEPARTMENT OF ENVIRONMENTAL MANAGEMENT  
OFFICE OF WATER RESOURCES  
FRESHWATER WETLANDS PROGRAM  
APPROVED WITH CONDITIONS AS SPECIFIED IN THE LETTER OF APPROVAL  
DATED: SEP 19 2024 FILE #: 24-0191  
NO CHANGES ALLOWED WITHOUT PRIOR APPROVAL  
APPROVED PLANS MUST BE AT CONSTRUCTION SITE

*Andy Chapman*

**GENERAL NOTES:**  
1. EXTEND SECURITY AND POWER CONDUITS FROM HANDHOLES INTO POLES. COORDINATE CONDUIT STUB UP WITH BASEPLATE. PROVIDE PULL STRING IN SECURITY CONDUITS.

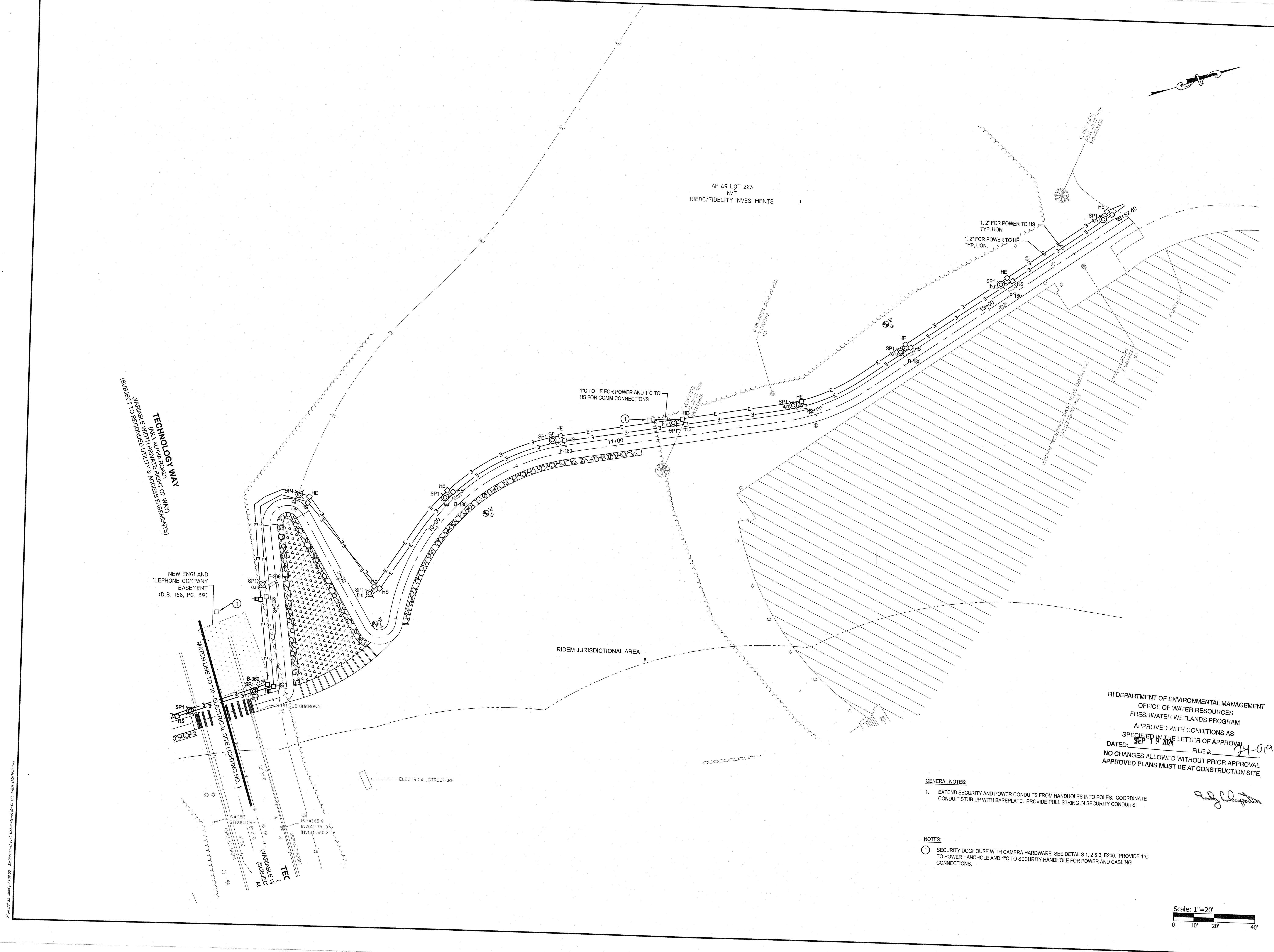
**NOTES:**  
① SECURITY DOGHOUSE WITH CAMERA HARDWARE. SEE DETAILS 1, 2 & 3, E200. PROVIDE 1" TO POWER HANDHOLE AND 1" TO SECURITY HANDHOLE FOR POWER AND CABLING CONNECTIONS.

Scale: 1"=20'  
0 10' 20' 40'

REVISIONS:

NO.	DATE	DESCRIPTION

PROJECT NO.: 23189.00  
DATE: AUGUST 1, 2024  
SCALE: 1"=20'  
DESIGNED BY:  
CHECKED BY:  
DRAWN BY:  
APPROVED BY:  
DRAWING TITLE:  
ELECTRICAL SITE LIGHTING NO. 2  
VOLUME 2 WALKING PATH  
DRAWING NO.: E2.0  
SHEET NO. 30 OF 31



23189.00 E2.0 08/01/24 11:00:00 - 08/01/24 11:00:00 - 08/01/24 11:00:00

