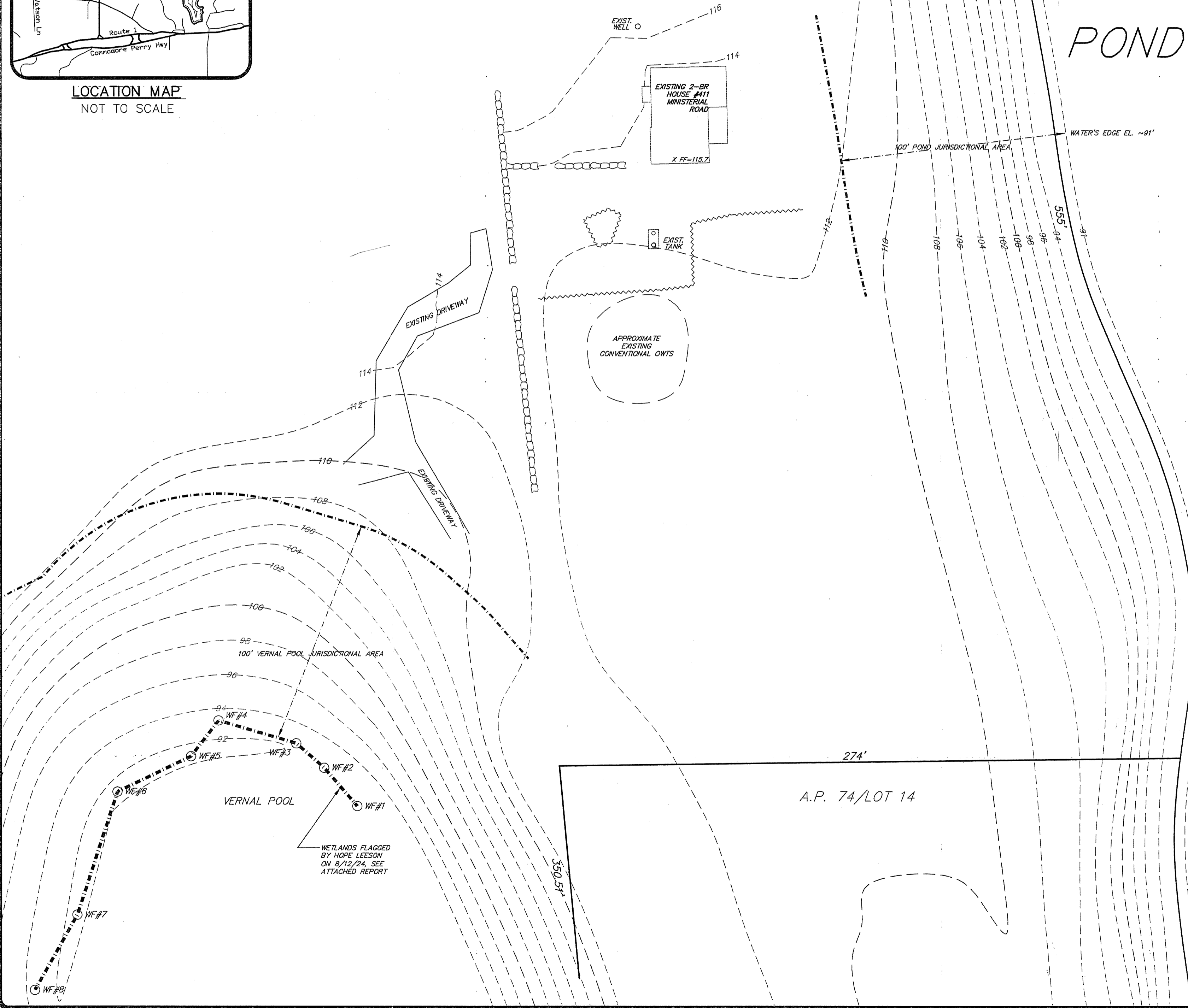
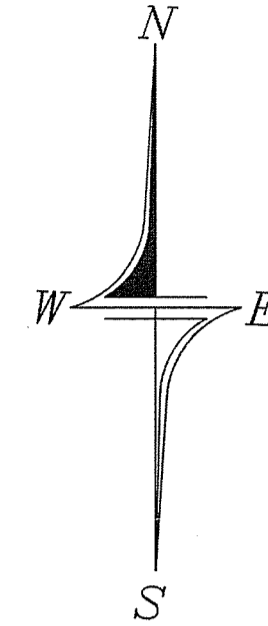


LOCATION MAP
NOT TO SCALE

A.P. 74/LOT 33
21.19 ACRES±

LONG
POND



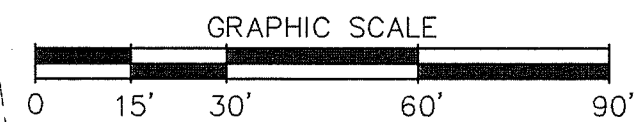
APPROXIMATE
EXISTING
CONVENTIONAL
OWTS

VERNAL POOL

WETLANDS FLAGGED
BY HOPE LEESON
ON 8/12/24. SEE
ATTACHED REPORT

A.P. 74/LOT 14

RI Environmental Management
AUG 23 2024
Office of Water Resources



EXISTING CONDITIONS PLAN

PREPARED FOR
HOPE LEESON

A.P. 74 LOT 33
SITUATED IN THE TOWN OF

SOUTH KINGSTOWN, RHODE ISLAND

NO.	REVISION	DATE

MARK L. DOWDELL
8/15/24
No. 11404
REGISTERED
PROFESSIONAL ENGINEER
CIVIL

DE DOWDELL
ENGINEERING
DOWDELL ENGINEERING ASSOCIATES, LLC
CIVIL & ENVIRONMENTAL ENGINEERS
SURVEYORS & LAND PLANNERS
P.O. BOX 1884 • 3949 OLD POST ROAD
SOUTH KINGSTOWN, RHODE ISLAND 02813
PHONE: (401) 394-1027
FAX: (401) 394-1027
WEBSITE: dowdelleng.com
EMAIL: mark@dowdelleng.com

JOB NO. 3653	DRAWN BY: R.L.C.
DWG. NO. 3653-EXC	CHECKED: M.L.D.
SCALE: 1"=30'	APPROVED: M.L.D.
SHEET: 1	DATE: AUG 15, 2024