

T172S-1 S171-1 Johnston Tap 115kV Rebuild

Johnston, RI
Environmental Resources Maps
December 31, 2024



PREPARED FOR:



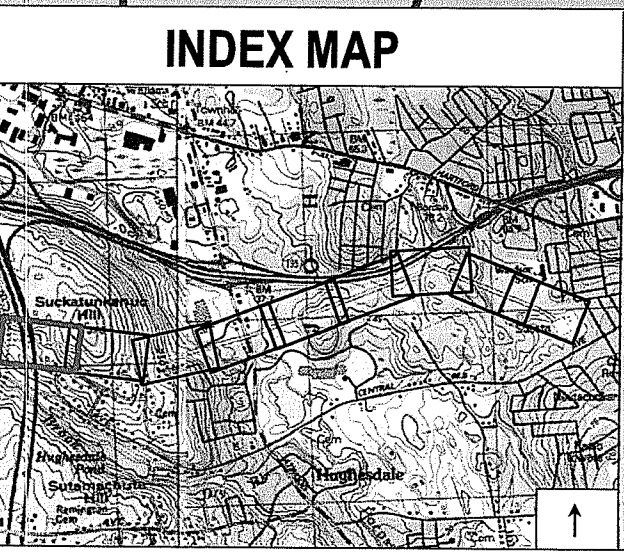
Rhode Island Energy™
a PPL company
280 Melrose Street
Providence, RI 02907

INDEX OF FIGURES

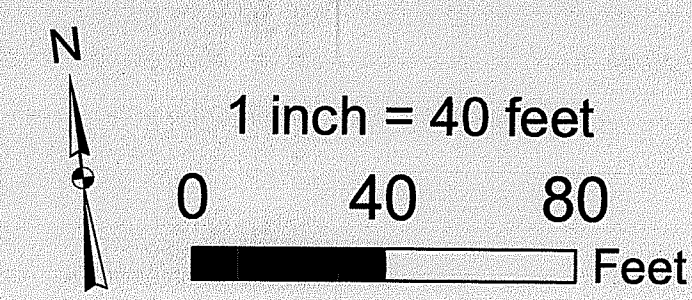
T1 - TITLE SHEET
1 - 9 - MAP SHEETS

PREPARED BY:

BSC GROUP DEPARTMENT OF ENVIRONMENTAL MANAGEMENT
OFFICE OF WATER RESOURCES
FRESHWATER WETLANDS PROGRAM
1 Mercantile Street
Suite 610
Worcester, MA 01608
APPROVED WITH CONDITIONS AS SPECIFIED IN THE LETTER OF APPROVAL
DATED: FEB 20 2025 FILE #: 24-0250
NO CHANGES ALLOWED WITHOUT PRIOR APPROVAL
APPROVED PLANS MUST BE AT CONSTRUCTION SITE
Nancy L. Freeman



Legend	
● Existing Transmission Line Structure Location	□ Access Preparation & Mow
● Prop. Transmission Line Structure Location (Direct Embed)	▨ Engineered Access
● Prop. Transmission Line Structure Location (Concrete Caisson)	▨ Temporary Stone to Remove
○ Existing Overhead Line	□ Work Pad
— Approx. Right-of-Way (ROW)	□ Pull Pad
— Construction Entrance	▨ Limit of Disturbance
— Existing Access	▨ Matted Work Areas
— Field Delineated Stream*	▨ Field Delineated Bank
— Field Delineated Wetland Boundary	▨ Field Delineated Stream Centerline
▨ Field Delineated Wetland*	▨ Protective Fencing
▨ Estimated Wetland	▨ Parcel Boundary
▨ RIGIS Wetlands*	▨ Sediment Control Barrier
▨ FEMA 100yr Floodplain*	▨ Gate
▨ Rare Plant Location	▨ Culvert
▨ Natural Heritage Area	▨ Concrete Washout
▨ ASAPP Sensitive Area	▨ Stream Flag
	▨ Wetland Flag
	▨ Proposed Minor Contour
	▨ Proposed Major Contour
	▨ 150ft Buffer to Rivers (River Region 2)
	▨ 25ft Buffer to Swamps < 1 acre (River Region 2)
	▨ 50ft Buffer Swamps ≥ 1 acre < 10 acres (River Region 2)



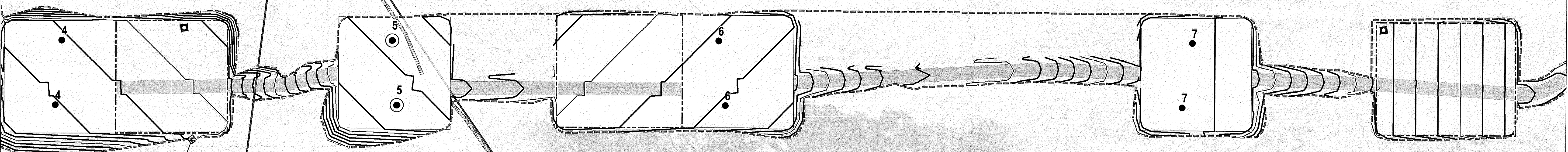
RI DEPARTMENT OF ENVIRONMENTAL MANAGEMENT OFFICE OF WATER RESOURCES FRESHWATER WETLANDS PROGRAM	T172S-1 S171-1 Johnston Tap 115kV Rebuild
APPROVED WITH CONDITIONS AS SPECIFIED IN LETTER OF APPROVAL DATED: FEB 20 2025 FILE #: 24-0250	Page 1 of 9
NO CHANGE SHALL BE MADE WITHOUT PRIOR APPROVAL APPROVED PLANS MUST BE AT CONSTRUCTION SITE <i>Sandy L. Freeman</i>	Johnston, RI Date: February, 2025
NO. DATE REVISIONS	Rhode Island Energy BSC GROUP BUILD SUPPORT CONNECT

THIS MAPPING PRODUCT HAS BEEN CREATED TO COMPLY WITH SUBMITTAL REQUIREMENTS TO OBTAIN CERTAIN REGULATORY APPROVALS AND, AS SUCH, THERE IS NO RELIANCE ON THE INFORMATION CONTAINED HEREIN FOR ANY OTHER PURPOSE.

N/F
 STONEHILL DRIVE LLC
 BOOK 2030 PAGE 190
 TAX MAP 44 LOT 66-1A
 PID: 102325

N/F
 NARRAGANSETT
 ELECTRIC CO
 BOOK 80 PAGE 268
 TAX MAP 44 LOT 172
 PID: 12168

N/F
 NARRAGANSETT
 ELECTRIC CO
 BOOK 78 PAGE 433
 TAX MAP 44 LOT 65
 PID: 12086



PHEN A. &
 RON P.
 ASQUALE
 BOOK 270 PAGE 312
 TAX MAP 44 LOT 487
 PID: 12464

N/F
 JENNIFER L.
 MCKENNA
 BOOK 2143 PAGE 242
 TAX MAP 44 LOT 469
 PID: 12447

N/F
 ANTHONY P. &
 PATRICIA A.
 COLANTONIO
 BOOK 2373 PAGE 156
 TAX MAP 44 LOT 468
 PID: 12446

N/F
 CHERYL
 APKOUNIAN
 BOOK 295 PAGE 107
 TAX MAP 44 LOT 467
 PID: 12445

N/F
 LENNA BAILEY
 BOOK 2581 PAGE 269
 TAX MAP 44 LOT 457
 PID: 12435

N/F
 HELEN P. ETTER
 BOOK 244 PAGE 280
 TAX MAP 44 LOT 498
 PID: 12475

N/F
 KENNETH E. &
 NINA R.
 ASHWORTH
 BOOK 630 PAGE 74
 TAX MAP 44 LOT 497
 PID: 12474

N/F
 LOUIS P. &
 JOSEPHINE A.
 MACEDONIO
 BOOK 2716 PAGE 182
 TAX MAP 44 LOT 496
 PID: 12473

POWER AVE

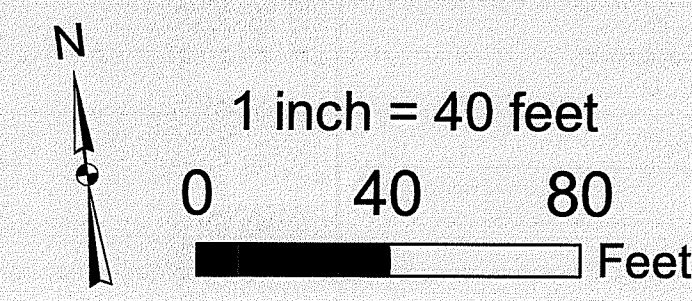
BARBARA CT

BARBARA CT

INDEX MAP

Legend

- Existing Transmission Line Structure Location
- Prop. Transmission Line Structure Location (Direct Embed)
- Prop. Transmission Line Structure Location (Concrete Caisson)
- OHW Existing Overhead Line
- - - - - Approx. Right-of-Way (ROW)
- - - - - Construction Entrance
- Existing Access
- Access Preparation & Mow
- Engineered Access
- Temporary Stone to Remove
- Work Pad
- Pull Pad
- Limit of Disturbance
- Matted Work Areas
- Field Delineated Bank
- Field Delineated Stream Centerline
- Field Delineated Stream*
- Field Delineated Wetland Boundary
- Field Delineated Wetland*
- Estimated Wetland
- RIGIS Wetlands*
- FEMA 100yr Floodplain*
- Rare Plant Location
- Natural Heritage Area
- ASAPP Sensitive Area
- Protective Fencing
- Parcel Boundary
- Sediment Control Barrier
- Gate
- Culvert
- Concrete Washout
- Stream Flag
- Wetland Flag
- Proposed Minor Contour
- Proposed Major Contour



RI DEPARTMENT OF ENVIRONMENTAL MANAGEMENT OFFICE OF WATER RESOURCES FRESHWATER WETLANDS PROGRAM		T172S-1 S171-1 Johnston Tap 115kV Rebuild FEB 18 2025	
APPROVED WITH CONDITIONS AS SPECIFIED IN THE LETTER OF APPROVAL		Page 2 of 9	
DATED: FEB 28 2025 FILE #: 24-0250		Johnston, RI Date: February, 2025	
NO CHANGES ALLOWED WITHOUT PRIOR APPROVAL APPROVED PLANS MUST BE AT CONSTRUCTION SITE		Rhode Island Energy	
 Andy L. Edeaman REVISIONS		 BSC GROUP BUILD SUPPORT CONNECT	
NO.	DATE		

THIS MAPPING PRODUCT HAS BEEN CREATED TO COMPLY WITH SUBMITTAL REQUIREMENTS TO OBTAIN CERTAIN REGULATORY APPROVALS AND, AS SUCH, THERE IS NO RELIANCE ON THE INFORMATION CONTAINED HEREIN FOR ANY OTHER PURPOSE.

N/F
PROVIDA LLC
BOOK 1845 PAGE
TAX MAP 44 LOT
PID: 12347

N/F
STONEHILL DRIVE LLC
BOOK 2030 PAGE 190
TAX MAP 44 LOT 66-1A
PID: 102325

STONEHILL DR

JO-W29
Scrub Shrub
Swamp

JO-W26
Scrub Shrub Swamp

JO-W27
Scrub
Shrub Swamp

JO-W28
Scrub Shrub
Swamp

N/F
NARRAGANSETT ELECTRIC CO
BOOK 78 PAGE 433
TAX MAP 44 LOT 157 PID: 12156

N/F
DONALD E. &
APRIL A.
INNOCENTI
BOOK 2657 PAGE 35
TAX MAP 44 LOT 345
PID: 12333

N/F
MARIA C. CONTE
BOOK 2557 PAGE 44
TAX MAP 44 LOT 344
PID: 12332

N/F
JOANNE
SAMBORSKY
TRUSTEE
BOOK 3005 PAGE 117
TAX MAP 44 LOT 343
PID: 12331

N/F
ANNA DEVECCHIS
BOOK 189 PAGE 791
TAX MAP 44 LOT 321
PID: 12310

N/F
ANTHONY J.
RICCI
BOOK 1776 PAGE 229
TAX MAP 44 LOT 322
PID: 12311

N/F
MARTHA
TORTOLANI
BOOK 109 PAGE 1082
TAX MAP 44 LOT 323
PID: 12312

N/F
BARBARA A.
ROACH
BOOK 1954 PAGE 214
TAX MAP 44 LOT 324
PID: 12313

N/F
GILMAR
AGUILAR
BOOK 1282 PAGE 238
TAX MAP 44 LOT 325
PID: 12314

N/F
SHIRLEY
DELU...
BOOK...
TAX...
PID:

POWER AVE
BARBARA CT

N/F
JOHN A.
D'AMBRA
BOOK 1821 PAGE
237
TAX MAP 44 LOT 454
PID: 12434

LILLIAN RD

TEVERE DR

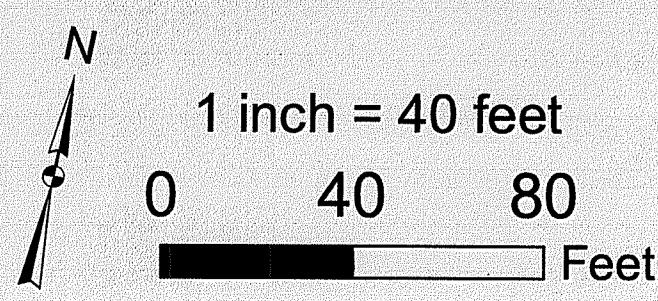
LINWOOD DR

INDEX MAP



Legend

- Existing Transmission Line Structure Location
- Prop. Transmission Line Structure Location (Direct Embed)
- Prop. Transmission Line Structure Location (Concrete Caisson)
- Existing Overhead Line
- Approx. Right-of-Way (ROW)
- Construction Entrance
- Existing Access
- Access Preparation & Mow
- Engineered Access
- Temporary Stone to Remove
- Work Pad
- Pull Pad
- Limit of Disturbance
- Matted Work Areas
- Field Delineated Bank
- Field Delineated Stream Centerline
- Field Delineated Stream*
- Field Delineated Wetland Boundary
- Field Delineated Wetland*
- Estimated Wetland
- RIGIS Wetlands*
- FEMA 100yr Floodplain*
- Rare Plant Location
- Natural Heritage Area
- ASAPP Sensitive Area
- Protective Fencing
- Parcel Boundary
- Sediment Control Barrier
- Gate
- Culvert
- Concrete Washout
- Stream Flag
- Wetland Flag
- Proposed Minor Contour
- Proposed Major Contour
- 100ft Buffer to Rivers (River Region 2)
- 25ft Buffer to Swamps < 1 acre (River Region 2)



RI DEPARTMENT OF ENVIRONMENTAL MANAGEMENT
OFFICE OF WATER RESOURCES
FRESHWATER WETLANDS PROGRAM
APPROVED WITH CONDITIONS AS SPECIFIED IN THE LETTER OF APPROVAL
DATED: FEB 28 2025 FILE #: 24-0330
NO CHANGES ALLOWED WITHOUT PRIOR APPROVAL
APPROVED PLANS MUST BE AT CONSTRUCTION SITE
Andy L. Freeman

T172S-1 S171-1 Johnston Tap 115kV Rebuild
FEB 18 2025
Page 3 of 9
Johnston, RI Date: February, 2025
Rhode Island Energy
BSC GROUP
BUILD | SUPPORT | CONNECT

THIS MAPPING PRODUCT HAS BEEN CREATED TO COMPLY WITH SUBMITTAL REQUIREMENTS TO OBTAIN CERTAIN REGULATORY APPROVALS AND AS SUCH THERE IS NO RELIANCE ON THE INFORMATION CONTAINED HEREIN FOR ANY OTHER PURPOSE

N/F
PROVIDA LLC
BOOK 1845 PAGE 39
TAX MAP 44 LOT 359
PID: 12347

N/F
NARRAGANSETT
ELECTRIC CO
BOOK 78 PAGE 364
TAX MAP 44 LOT 156
PID: 12155

N/F
195 ASSOCIATES
LLC
BOOK 1845 PAGE 43
TAX MAP 44 LOT 56
PID: 12083

N/F
MCDONALDS
BOOK 2086 PAGE 221
TAX MAP 23 LOT 49
PID: 7939

N/F
SHIRLEY L.
DELUCA
BOOK 150 PAGE 1049
TAX MAP 44 LOT 57
PID: 12084

N/F
THE POLSENO
GROUP LLC
BOOK 2787 PAGE 147
TAX MAP 44 LOT 116
PID: 12124

N/F
1301 ATWOOD LLC
BOOK 2297 PAGE 81
TAX MAP 23 LOT 100
PID: 7969

Forested
Wetland:
Deciduous

Forested
Wetland:
Deciduous

STONEHILL DR

ATWOOD AVE

OLD RD

NEAREST INTERSECTION: 350FT
ATWOOD AVE & STONEHILL DR

NEAREST INTERSECTION: 60FT
ATWOOD AVE & STONEHILL DR

NEAREST INTERSECTION: 250FT
ATWOOD AVE & STONEHILL DR

JO-W27
Scrub Shrub
Swamp

JO-W28
Scrub Shrub
Swamp

JO-W24
Scrub Shrub
Swamp

JO-W24
Scrub Shrub
Swamp

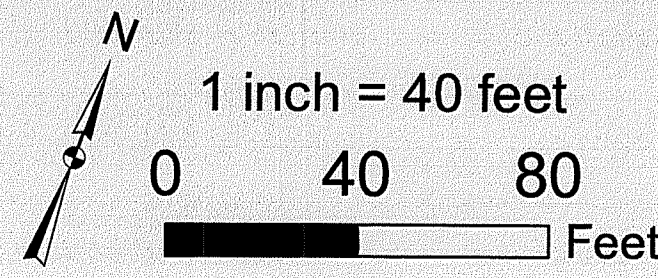
JO-W24
Scrub Shrub
Swamp

Pocasset River

INDEX MAP

Legend

- Existing Transmission Line Structure Location
- Prop. Transmission Line Structure Location (Direct Embed)
- Prop. Transmission Line Structure Location (Concrete Caisson)
- Existing Overhead Line
- Approx. Right-of-Way (ROW)
- Construction Entrance
- Existing Access
- Access Preparation & Mow
- Engineered Access
- Temporary Stone to Remove
- Work Pad
- Pull Pad
- Limit of Disturbance
- Matted Work Areas
- Field Delineated Bank
- Field Delineated Stream Centerline
- Field Delineated Stream*
- Field Delineated Wetland Boundary
- Field Delineated Wetland*
- ▨ Estimated Wetland
- ▨ RIGIS Wetlands*
- ▨ FEMA 100yr Floodplain*
- ⊙ Rare Plant Location
- ▭ Natural Heritage Area
- ▭ ASAPP Sensitive Area
- Protective Fencing
- Parcel Boundary
- Sediment Control Barrier
- ⊠ Gate
- ⊠ Culvert
- ⊠ Concrete Washout
- ▲ Stream Flag
- ▲ Wetland Flag
- Proposed Minor Contour
- Proposed Major Contour
- ▨ 100ft Buffer to Rivers (River Region 2)
- ▨ 150ft Buffer to Rivers (River Region 2)
- ▨ 25ft Buffer to Swamps < 1 acre (River Region 2)
- ▨ 50ft Buffer Swamps ≥ 1 acre < 10 acres (River Region 2)



RI DEPARTMENT OF ENVIRONMENTAL MANAGEMENT OFFICE OF WATER RESOURCES FRESHWATER WETLANDS PROGRAM		T172S-1 S171-1 Johnston Tap 115kV Rebuild FEB 18 2025	
APPROVED WITH CONDITIONS AS SPECIFIED IN THE LETTER OF APPROVAL		Page 4 of 9	
DATED: FEB 28 2025 FILE #: 24-0350		Johnston, RI Date: February, 2025	
NO CHANGES ALLOWED WITHOUT PRIOR APPROVAL APPROVED PLANS MUST BE AT CONSTRUCTION SITE		Rhode Island Energy	
Nancy L. Freeman		BSC GROUP BUILD SUPPORT CONNECT	
NO.	DATE	REVISIONS	

THIS MAPPING PRODUCT HAS BEEN CREATED TO COMPLY WITH SUBMITTAL REQUIREMENTS TO OBTAIN CERTAIN REGULATORY APPROVALS AND, AS SUCH, THERE IS NO RELIANCE ON THE INFORMATION CONTAINED HEREIN FOR ANY OTHER PURPOSE.

US HWY 6 US HWY 6

Forested Wetland: Deciduous

N/F 1301 ATWOOD LLC BOOK 2297 PAGE 81 TAX MAP 23 LOT 100 PID: 7969

JO-W24 Scrub Shrub Swamp

INSTALL PLUNGE POOL

INSTALL STONE FILTER

INSTALL PLUNGE POOL

13

13

14

14

15

15

NATURAL HERITAGE AREA

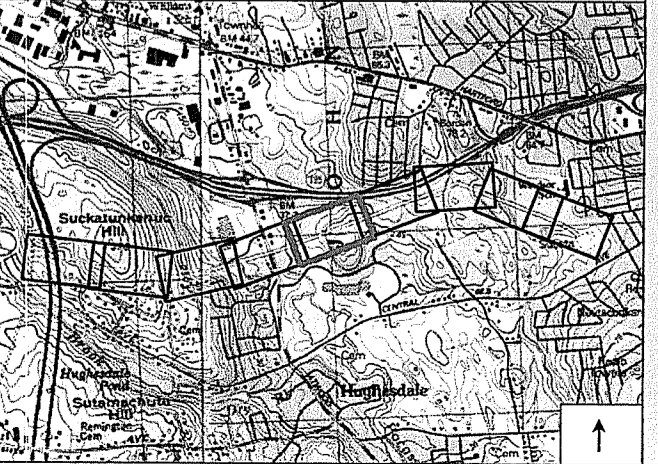
JO-W24 Scrub Shrub Swamp

Forested Wetland: Deciduous

N/F 1301 ATWOOD LLC BOOK 2297 PAGE 81 TAX MAP 23 LOT 1 PID: 7897

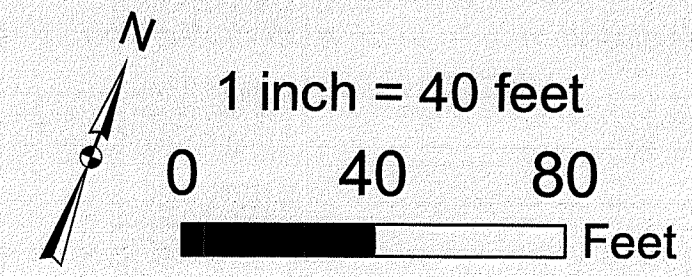
N/F 1301 ATWOOD LLC BOOK 2297 PAGE 81 TAX MAP 23 LOT 108 PID: 7974

INDEX MAP



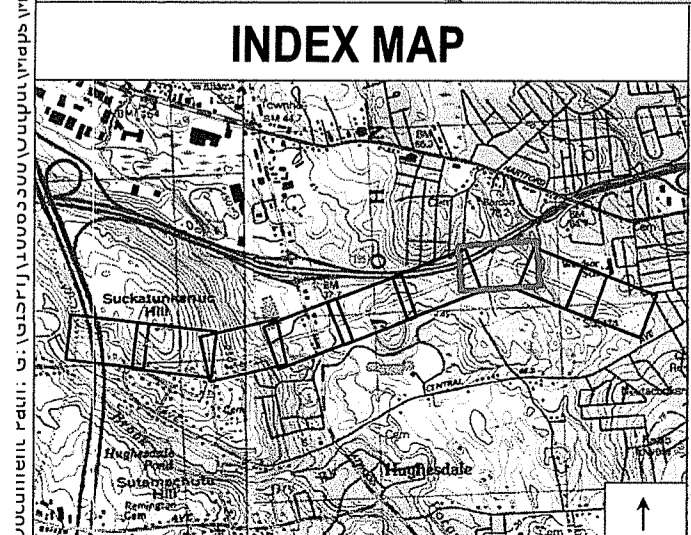
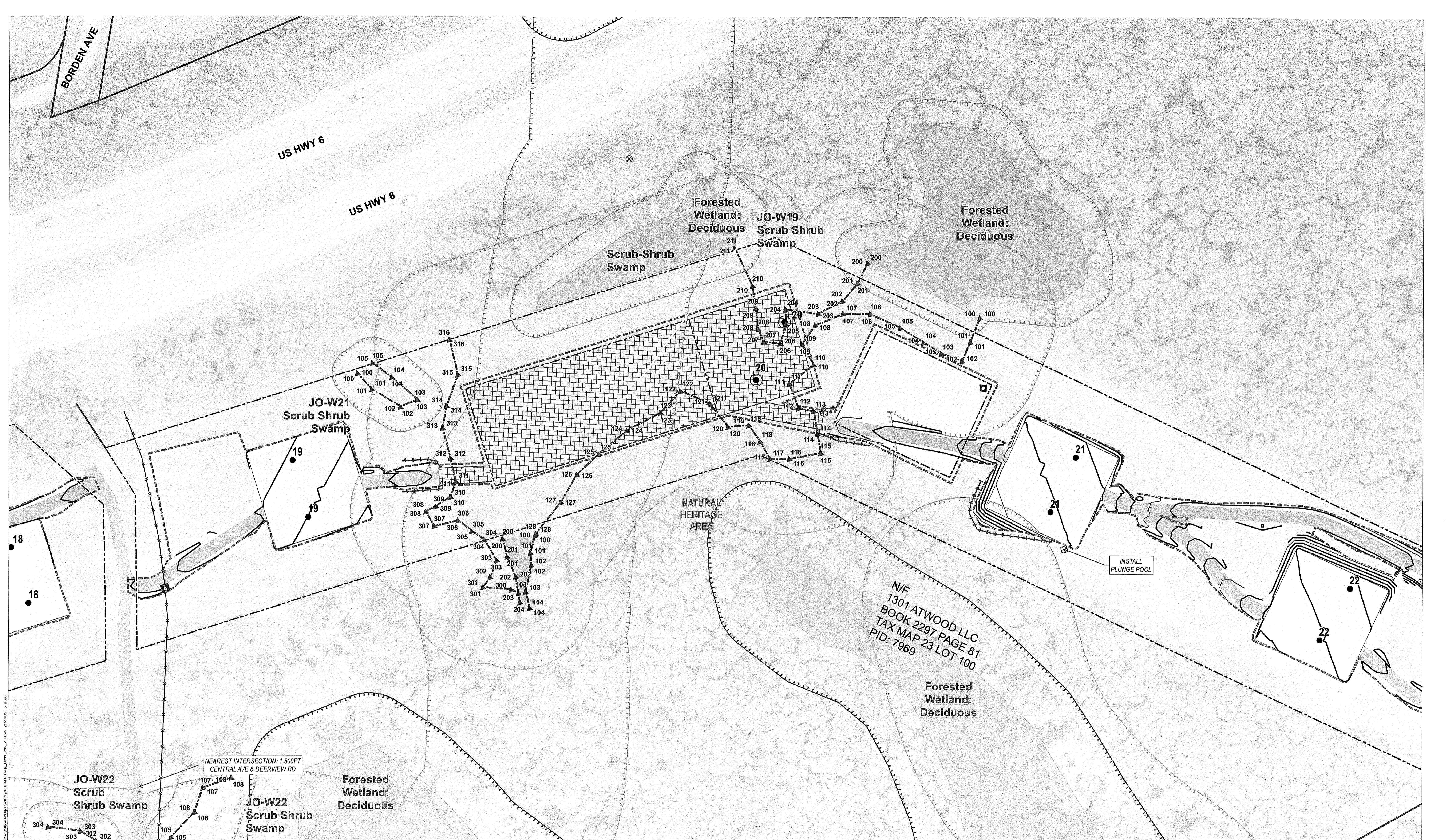
Legend

- Existing Transmission Line Structure Location
- Prop. Transmission Line Structure Location (Direct Embed)
- Prop. Transmission Line Structure Location (Concrete Caisson)
- Existing Overhead Line
- Approx. Right-of-Way (ROW)
- Construction Entrance
- Existing Access
- Access Preparation & Mow
- Engineered Access
- Temporary Stone to Remove
- Work Pad
- Pull Pad
- Limit of Disturbance
- Matted Work Areas
- Field Delineated Bank
- Field Delineated Stream Centerline
- Field Delineated Stream*
- Field Delineated Wetland Boundary
- Field Delineated Wetland*
- Estimated Wetland
- RIGIS Wetlands*
- FEMA 100yr Floodplain*
- Rare Plant Location
- Natural Heritage Area
- ASAPP Sensitive Area
- Protective Fencing
- Parcel Boundary
- Sediment Control Barrier
- Gate
- Culvert
- Concrete Washout
- Stream Flag
- Wetland Flag
- Proposed Minor Contour
- Proposed Major Contour
- 100ft Buffer to Rivers (River Region 2)
- 150ft Buffer to Rivers (River Region 2)
- 25ft Buffer to Swamps < 1 acre (River Region 2)
- 50ft Buffer Swamps ≥ 1 acre < 10 acres (River Region 2)



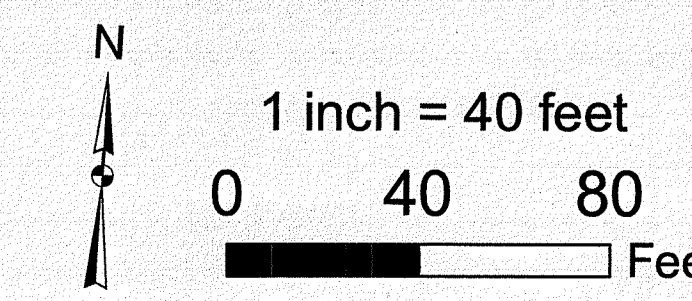
RI DEPARTMENT OF ENVIRONMENTAL MANAGEMENT OFFICE OF WATER RESOURCES FRESHWATER WETLANDS PROGRAM		T172S-1 S171-1 Johnston Tap 115kV Rebuild FEB 18 2025	
APPROVED WITH CONDITIONS AS SPECIFIED IN THE LETTER OF APPROVAL		Page 5 of 9	
DATED: FEB 20 2025 FILE #: 24-0250		Johnston, RI Date: February, 2025	
NO CHANGES ALLOWED WITHOUT PRIOR APPROVAL APPROVED PLANS MUST BE AT CONSTRUCTION SITE <i>Nancy L. Freeman</i>		Rhode Island Energy	
NO. DATE REVISIONS		BSC GROUP BUILD SUPPORT CONNECT	

THIS MAPPING PRODUCT HAS BEEN CREATED TO COMPLY WITH SUBMITTAL REQUIREMENTS TO OBTAIN CERTAIN REGULATORY APPROVALS AND, AS SUCH, THERE IS NO RELIANCE ON THE INFORMATION CONTAINED HEREIN FOR ANY OTHER PURPOSE.



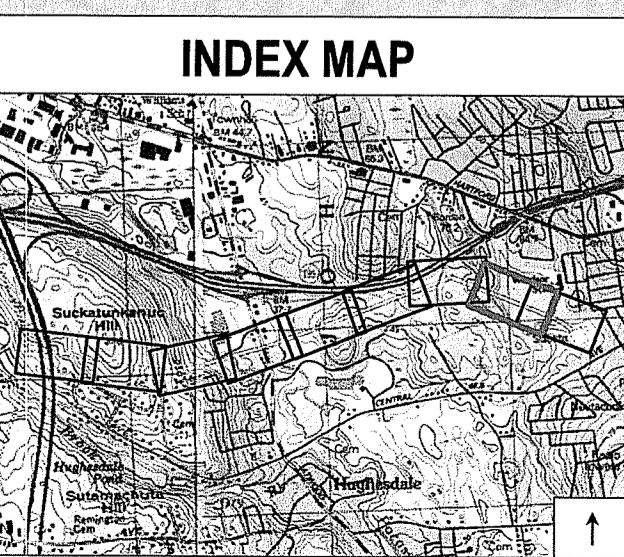
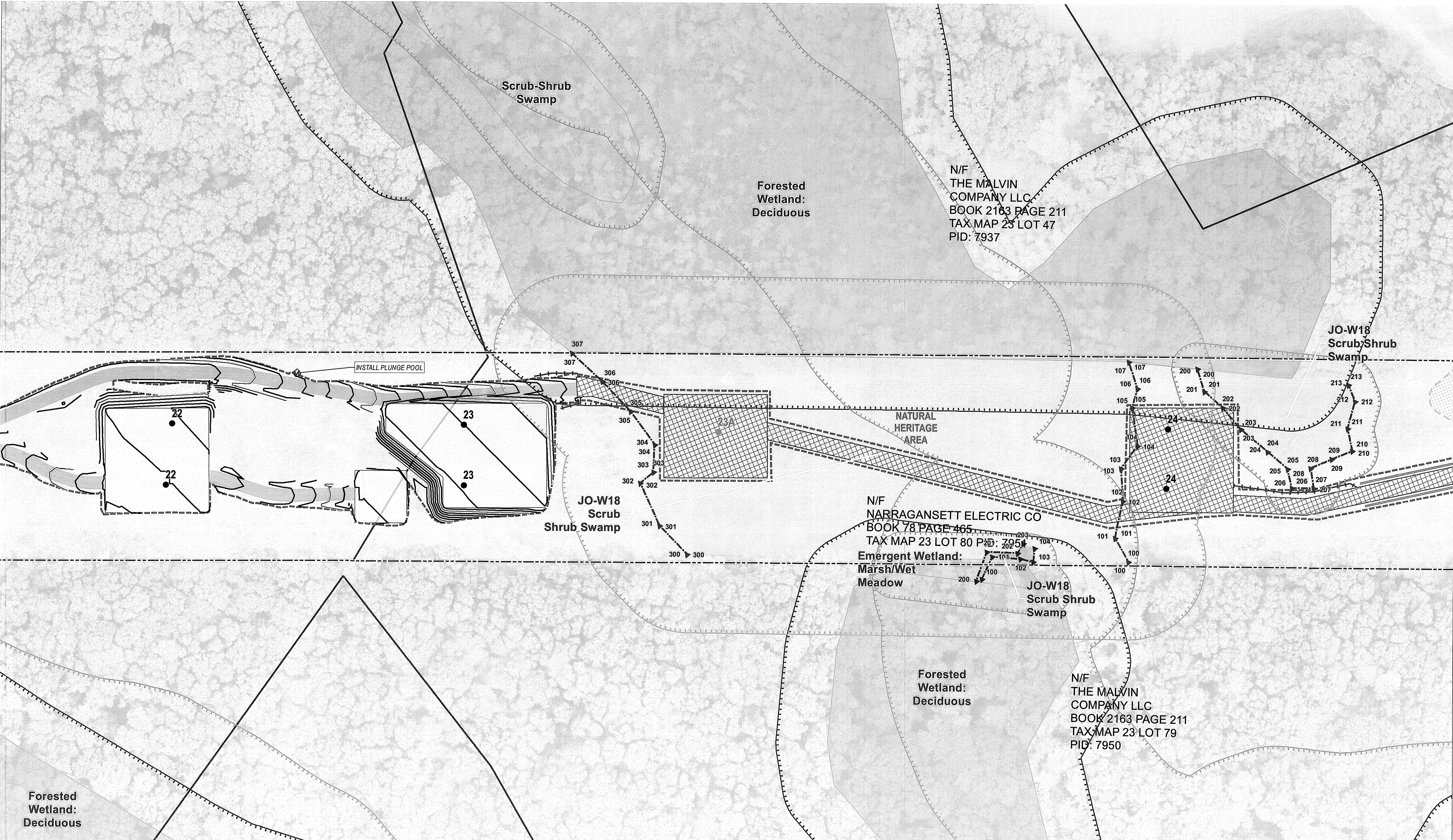
NEAREST INTERSECTION: 1,500 FT CENTRAL AVE & DEERVIEW RD

Legend	
● Existing Transmission Line Structure Location	○ Access Preparation & Mow
● Prop. Transmission Line Structure Location (Direct Embed)	■ Engineered Access
● Prop. Transmission Line Structure Location (Concrete Caisson)	□ Temporary Stone to Remove
○ Existing Overhead Line	□ Work Pad
— Approx. Right-of-Way (ROW)	□ Pull Pad
— Construction Entrance	□ Limit of Disturbance
— Existing Access	□ Matted Work Areas
— Field Delineated Stream*	— Field Delineated Bank
— Field Delineated Wetland Boundary	— Field Delineated Stream Centerline
— Field Delineated Wetland*	— Protective Fencing
— Estimated Wetland	— Parcel Boundary
— RIGIS Wetlands*	— Sediment Control Barrier
— FEMA 100yr Floodplain*	— Gate
— Rare Plant Location	⊗ Culvert
— Natural Heritage Area	⊠ Concrete Washout
— ASAPP Sensitive Area	▲ Stream Flag
— Proposed Minor Contour	▲ Wetland Flag
— Proposed Major Contour	
— 100ft Buffer to Rivers (River Region 2)	
— 25ft Buffer to Swamps < 1 acre (River Region 2)	
— 50ft Buffer Swamps ≥ 1 acre < 10 acres (River Region 2)	
— 75ft Buffer Swamps ≥ 10 acres (River Region 2)	
— 75ft Buffer to Shrub Swamps ≥ 1 acre (River Region 2)	

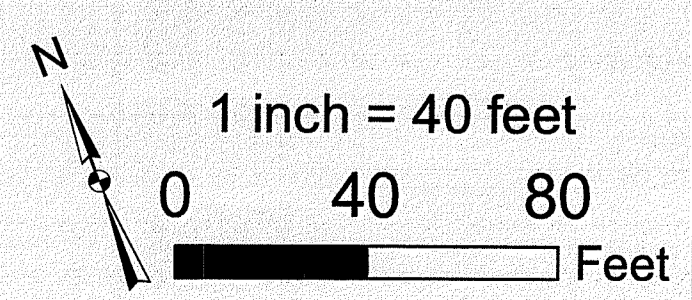


RI DEPARTMENT OF ENVIRONMENTAL MANAGEMENT OFFICE OF WATER RESOURCES FRESHWATER WETLANDS PROGRAM		T172S-1 S171-1 Johnston Tap 115kV Rebuild FEB 18 2025	
APPROVED WITH CONDITIONS AS SPECIFIED IN THE LETTER OF APPROVAL		Page 7 of 9	
DATED: FEB 28 2025 FILE #: 24-0250		Johnston, RI Date: February, 2025	
NO CHANGES ALLOWED WITHOUT PRIOR APPROVAL		Rhode Island Energy	
APPROVED PLANS MUST BE AT CONSTRUCTION SITE		BSC GROUP BUILD SUPPORT CONNECT	
NO.	DATE	REVISIONS	

THIS MAPPING PRODUCT HAS BEEN CREATED TO COMPLY WITH SUBMITTAL REQUIREMENTS TO OBTAIN CERTAIN REGULATORY APPROVALS AND AS SUCH THERE IS NO RELIANCE ON THE INFORMATION CONTAINED HEREIN FOR ANY OTHER PURPOSE

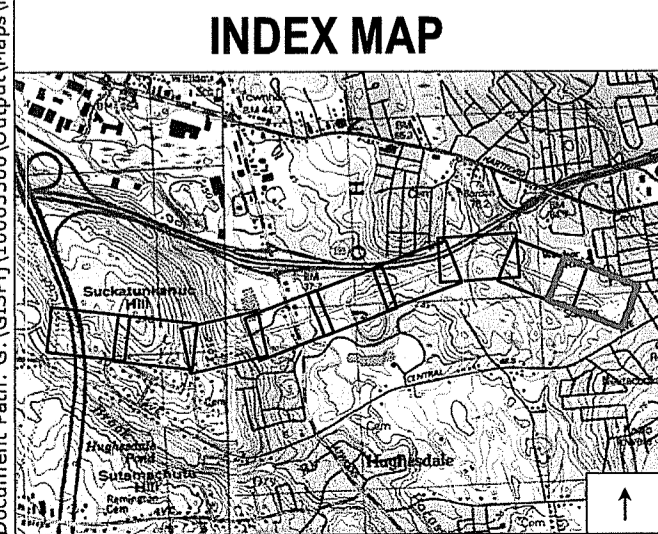
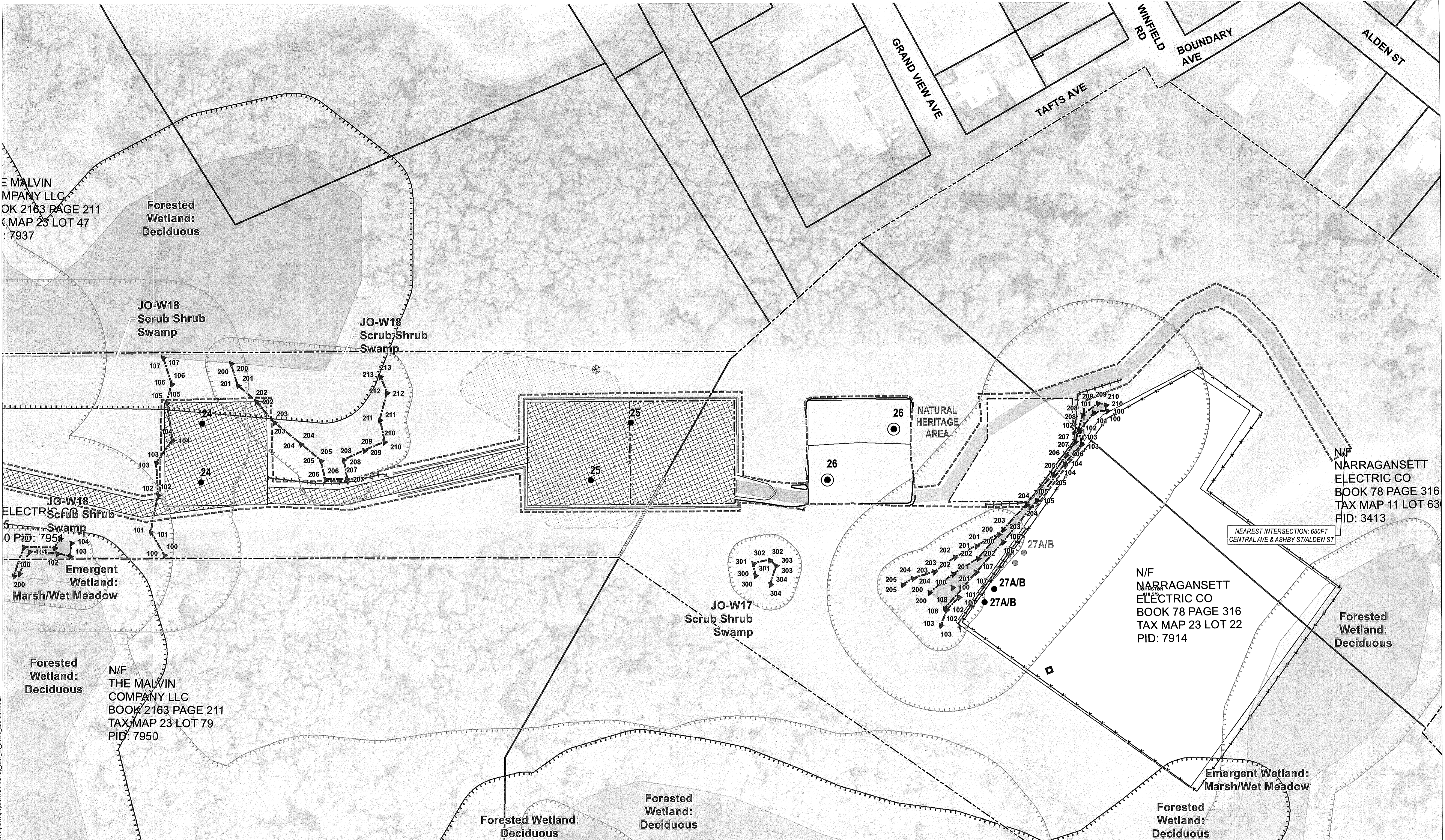


Legend	
● Existing Transmission Line Structure Location	■ Access Preparation & Mow
● Prop. Transmission Line Structure Location (Direct Embed)	■ Engineered Access
● Prop. Transmission Line Structure Location (Concrete Caisson)	□ Temporary Stone to Remove
○ Existing Overhead Line	□ Work Pad
— Approx. Right-of-Way (ROW)	□ Pull Pad
— Construction Entrance	□ Limit of Disturbance
— Existing Access	□ Matted Work Areas
— Field Delineated Stream Centerline	— Field Delineated Bank
— Field Delineated Stream*	— Field Delineated Wetland Boundary
— Field Delineated Wetland*	— Field Delineated Wetland*
— Estimated Wetland	— RIGIS Wetlands*
— FEMA 100yr Floodplain*	— Rare Plant Location
— Natural Heritage Area	— Natural Heritage Area
— ASAPP Sensitive Area	— ASAPP Sensitive Area
— Protective Fencing	— Parcel Boundary
— Sediment Control Barrier	— Proposed Minor Contour
— Gate	— Proposed Major Contour
— Culvert	— 100ft Buffer to Rivers (River Region 2)
— Concrete Washout	— 25ft Buffer to Swamps < 1 acre (River Region 2)
— Stream Flag	— 50ft Buffer Swamps ≥ 1 acre < 10 acres (River Region 2)
— Wetland Flag	— 75ft Buffer to Shrub Swamps ≥ 1 acre (River Region 2)

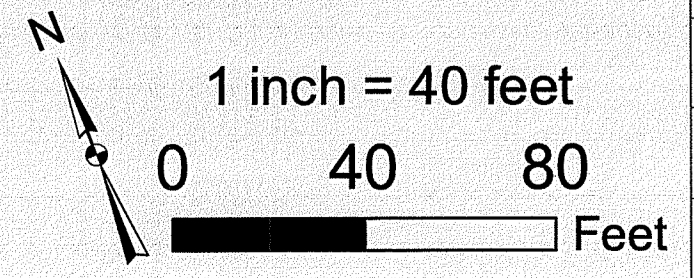


RI DEPARTMENT OF ENVIRONMENTAL MANAGEMENT OFFICE OF WATER RESOURCES FRESHWATER WETLANDS PROGRAM		T172S-1 S171-1 Johnston Tap 115kV Rebuild	
APPROVED WITH CONDITIONS AS SPECIFIED IN THE LETTER OF APPROVAL		Page 8 of 9	
DATED: FEB 28 2025 FILE #: 24-0250		Date: February, 2025	
NO CHANGES ALLOWED WITHOUT PRIOR APPROVAL APPROVED PLANS MUST BE AT CONSTRUCTION SITE		Johnston, RI	
NO. DATE REVISIONS			

THIS MAPPING PRODUCT HAS BEEN CREATED TO COMPLY WITH SUBMITTAL REQUIREMENTS TO OBTAIN CERTAIN REGULATORY APPROVALS AND, AS SUCH, THERE IS NO RELIANCE ON THE INFORMATION CONTAINED HEREIN FOR ANY OTHER PURPOSE.



Legend	
● Existing Transmission Line Structure Location	Access Preparation & Mow
● Prop. Transmission Line Structure Location (Direct Embed)	Engineered Access
● Prop. Transmission Line Structure Location (Concrete Caisson)	Temporary Stone to Remove
○ Existing Overhead Line	Work Pad
--- Approx. Right-of-Way (ROW)	Pull Pad
--- Construction Entrance	Limit of Disturbance
--- Existing Access	Matted Work Areas
--- Field Delineated Bank	Field Delineated Stream Centerline
--- Field Delineated Stream*	Field Delineated Wetland Boundary
--- Field Delineated Wetland*	Field Delineated Stream*
--- Estimated Wetland	Protective Fencing
--- RIGIS Wetlands*	Parcel Boundary
--- FEMA 100yr Floodplain*	Sediment Control Barrier
--- Rare Plant Location	Gate
--- Natural Heritage Area	Culvert
--- ASAPP Sensitive Area	Concrete Washout
--- Proposed Minor Contour	Stream Flag
--- Proposed Major Contour	Wetland Flag
--- 100ft Buffer to Rivers (River Region 2)	
--- 25ft Buffer to Swamps < 1 acre (River Region 2)	
--- 50ft Buffer Swamps ≥ 1 acre < 10 acres (River Region 2)	
--- 75ft Buffer to Shrub Swamps ≥ 1 acre (River Region 2)	



R DEPARTMENT OF ENVIRONMENTAL MANAGEMENT OFFICE OF WATER RESOURCES FRESHWATER WETLANDS PROGRAM		T172S-1 S171-1 Johnston Tap 115kV Rebuild	
APPROVED WITH CONDITIONS AS SPECIFIED IN THE LETTER OF APPROVAL		Page 9 of 9	
DATED: FEB 28 2025 FILE #: 24-0250		Date: February, 2025	
NO CHANGES ALLOWED WITHOUT PRIOR APPROVAL. APPROVED PLANS MUST BE AT CONSTRUCTION SITE.		Johnston, RI	
NO. DATE REVISIONS			

THIS MAPPING PRODUCT HAS BEEN CREATED TO COMPLY WITH SUBMITTAL REQUIREMENTS TO OBTAIN CERTAIN REGULATORY APPROVALS AND, AS SUCH, THERE IS NO RELIANCE ON THE INFORMATION CONTAINED HEREIN FOR ANY OTHER PURPOSE.